

KRCL 90.9 FM Salt Lake City & 96.5 in Park City

"Radio worth its salt!"

KRCL is an independent, non-profit, non-commercial, community public radio station, celebrating over twenty-two years on the air.

KRCL's programming is all about what's happening - right here - in music, community affairs, culture and art, and what kinds of issues people and organizations are dealing with locally. Community radio stations focus on producing local, community-oriented programming; that's how we differ from NPR and commercial radio stations, where the majority of programs are produced for a national audience

KRCL went on the air in 1979 and has relied on volunteer program hosts to provide the "on-air

talent" since the beginning. Amazing but true, KRCL program hosts are people just like you, who received training at KRCL to produce a weekly radio program, broadcast an emergency alert, and produce public service announcements. They know what is going on in the community - because they live here! They know their stuff when it comes to music, too. Listening to the variety of music programs offered at KRCL is like having your own music consultant. The programmers listen to hundreds of CDs every week, and air a mix of old favorites and new releases, often with a timely theme. It's just great radio. Some people call KRCL their "jewel on the dial".

So if you have never tuned in - please do! Set a button, or two or three, to 90.9 FM (or 96.5 in Park City) in your car. Listen while you're getting ready for work, or cleaning the house, or whenever! Check out the program schedule in this guide, so you'll know when

your favorite type of music or information is on. If you are already a listener, take a moment to review the program guide; you'll probably find something new.

Everyone is invited to become a member of KRCL; just go to our website at www.krcl.org and click on "donate now". For a \$25 donation, you'll receive the KRCL quarterly program guide/newsletter called "Voices", keeping you in touch with what's going on at your radio station. Or call Andrew, The Membership Guy, at 363-1818 and donate over the phone. Membership provides the majority of KRCL's funding.

If you are already a member, a heartfelt thank you goes out to you. Everyone at KRCL, and everyone who listens to KRCL, appreciates your support.

krcl

Your Sound Alternative
commercial free, community radio
for a complete schedule of KRCL's programming
log on to www.krcl.org or call 801.363.1818

Second Annual Guide to KRCL
generously sponsored by



"The War of the Worlds" Radio Drama - Live Broadcast!

KRCL to broadcast Plan-B Theater's production of "The War of the Worlds" live! Yes - live! On October 26th you can be part of the broadcast. Plan-B Theater Company is recreating this classic radio drama with four actors, a whole lot of sound effects and a twist or two. This performance is a very special fundraiser for KRCL. October 26th is the only night "The War of the Worlds" will be broadcast live. Call KRCL right now to reserve your seats for this once in lifetime opportunity. Be part of a live broadcast of one of the most (in)famous moments in radio history. This all takes place at the Rose Wagner Theater. If you just can't attend on October 26, "The War of the Worlds" will run from Oct 18 - Nov 3, so all is not lost. But the only live broadcast night will be October 26th, when KRCL will have the theater wired for sound and the audience is part of the act. Reserve your seats by calling KRCL at 363-1818. Seating is limited, so don't wait! (To make reservations for a night other than Oct. 26, call 355-ARTS).



LUNASA 9/21 & CHAVA ALBERSTEIN 9/28
 & THE WAIFS 10/4 & LA BOTTINE
 SOURIANTE 10/12 & RAY WYLIE HUBBARD
 11/14 & ERIC BIBB 11/21 & ALTAN 12/7 &
 MEET THE JINGLE BABES 12/13 & THE
 CAMPBELL BROTHERS 1/10/2003
 & SAMULNORI 2/8 & JAMES KEELAGHAN
 & BRENN HILL 3/7 & PERLA BATAÑA
 3/21 & ALASDAIR FRASER 4/4 & PHILIP
 HAMILTON 4/11 & CLAUDIA ACUÑA 5/2 &
FAMILY DISCOVERY SERIES:
 CATHY & MARCY 11/9 & HARLEM 2/8
 & JOANIE BARTELS 3/15

(801) 395-3227
 FOR A SEASON BROCHURE



Variety and Depth in KRCL's Public Affairs Programming

You may think of KRCL as being all about music. But there's a whole other side to KRCL, bringing you diverse news and information through our local and national public affairs programming.

KRCL has recently revamped and revitalized our public affairs line-up, providing greater variety and depth and bringing more voices, more information, and more opinions at times more convenient for listeners.

The public affairs day begins at 5:30 am weekdays and 6:30 am Saturday. This time slot brings you "Free Speech News", "Radio High Country News", and more, starting your day off with news and information you can use. During the day, you can find a wealth of information on KRCL's midday public affairs pro-

grams; a nationally-produced public affairs show at noon, followed at 12:30 by a complementary locally-produced public affairs show. On Mondays at noon, you can catch "What's the Word", which examines language and literature and how they enrich people's lives. That's followed by the ever-popular "ArtSpeak", featuring interviews and information about the local arts scene.

Tuesdays KRCL will be presenting a new noon-time program addressing civil liberties, followed by locally-produced "Building the Good Society", a program addressing social change and community building. On Wednesdays at noon you can catch "This Way Out", an award-winning national and international gay and lesbian news radio program, followed by the long-running KRCL program, "Concerning Gays and Lesbians" at 12:30 pm. On Thursdays at noon, "The Environment Show" examines everything from environmental policy to the beauty and wonder of the natural world, and the locally-produced "The Nature of Things" examines issues and events pertaining to the natural world surrounding us here in the Intermountain West. Fridays feature "Latino USA", a radio journal of news and culture from a Latino perspective. It's followed at 12:30 pm by "La Voz de la Gente", featuring interviews and discussions with members of the local Hispanic community.

In the early evening, KRCL brings you "Democracy Now", the hard-hitting program hosted and produced by Amy Goodman, known for its in-depth examination of the news behind the headlines. It now airs at 5:30 pm Monday through Thursday. Fridays at 5:30 pm, you can hear two programs that examine the news and the media covering it, "Counterspin" and "Making Contact".

KRCL CD & RECORD SALE at the Avenues Street Fair

September 14 • 9 am to 7 pm
 Between I and N streets
 CDs and Vinyl in all genres, great prices!
 Have some CDs or Vinyl to donate?
 Just bring them to the station by Sept. 9
 1971 W. North Temple (between 9 and 5, Mon-Fri if possible)
 Call for more information.
 363-1818

Do You Need ENTERTAINMENT?

NOW is the time to CALL US!



Look to utahmusicians.org to find professional musicians for your private party and other special event entertainment needs.

Membership Makes the Difference.
 Come join the only professional musician's organization now 100 years old.

A.F.M. Local 104
 for more information, contact
 Tony or Dave @ (801) 270-8087

In addition, we've added an extra half-hour of public affairs programming, airing from 6:30 to 7:00 pm. These shows include some old favorites and some new programs as well, notably "Ken Nordine's Word Jazz", a spoken word, poetry and jazz program that uses language and sound to tell stories from a slightly skewed, but very unique, perspective. There are several locally produced public affairs programs in this time slot as well, including "A View from Here", "Knowledge in a Nutshell", and the Tongan radio show, "Tala Koula".

Sunday mornings you can hear "Native America Calling," a call-in program linking public radio stations, the Internet and listeners together in a thought-provoking national conversation about issues specific to Native communities. Each program engages noted guests and experts with callers throughout the United States; it airs from 6 to 7 am.

And lastly, KRCL has added short news and informational features throughout the day, including "On the West Side", "Wasatch Environmental Update", "Changing Channels: Alternative Takes", "Because We're Here", and "Music and the Broken Word". These programs, airing at 4:30 pm daily, provide a quick look at news from the west side of our community, the environmental movement in Utah, the gay and lesbian community, and the music and television industry. You can also get a quick update on labor news on "Workers Independent News Service", airing at 7:30 am weekdays, and listen to the political commentary of Jim Hightower weekdays at 11:00 am.

There's so much great programming on KRCL that it can be hard to keep track of it all. But remember, you can always go to KRCL's web page, www.krcl.org, for the latest schedule and programming information. Or consider clipping out the schedule available in this insert, and putting it up on your refrigerator. That way you'll be sure to tune in for more of the diverse information and news available throughout the week on your community station, KRCL.

Tuesday Nights
Voice of Polynesia
 7:00pm-8:30pm



Monday Nights
Jambo Africa
 7:00pm-8:30pm



KRCL airs over 50,000 FREE Public Service Announcements for non-profit organizations annually!

Nancy Workman
 Mayor

John Rosenthal
 Director, Human Services

Barbara N. Hardy, Ph.D.
 Division Director

Division of
Substance Abuse Services
 GOVERNMENT CENTER
 2001 South State Street, Suite S2300
 Salt Lake City, Utah 84190-2250
 Tel: (801) 468-2009
 Fax: (801) 468-2006
 Web Site: WWW.SLCSUBSTANCEABUSE.ORG



February 21, 2002

To Whom It May Concern:

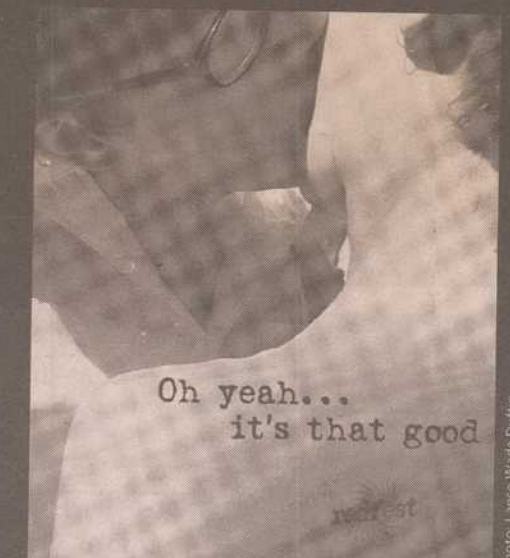
I wanted to take a moment to thank you for running the public service announcements submitted by the Salt Lake County Division of Substance Abuse Services. As an avid KRCL listener, I have had the pleasure of hearing these announcements on numerous occasions, at all times of the day. Your devotion of programming time to these announcements will certainly have a positive influence in our community as more substance-dependent individuals are guided to the treatment and assistance they require. Your willingness to devote valuable programming space to this community service demonstrates an admirable concern for our community's well-being, as though simply playing the best music on the radio weren't already sufficient. Continue the good work!

Sincerely Yours,

[Signature]
 Jeff Zentner,
 Salt Lake County Division of Substance Abuse Services

P.S. Please relay my compliments to Truman and Zig (sic?) for Red, White and Blues and Crossroads. They are two of the best blues shows I have heard anywhere.

TICKETS ON SALE NOW!



redfest

Presented by the ASUU Presenter's Office

Wednesday Ozomatli FREE CONCERT	Thursday The Spitfire Tour Featuring Kris Novaselic, Julia "Butterfly" Hill, Jill Sobule, and Jello Biafra at Kingsbury Hall	Friday Mix Master Mike Slum Village	Saturday String Cheese Incident
---------------------------------------	---------------------------------------------------------------------------------------------------------------------------------------------	-------------------------------------------	---------------------------------------

FOR TICKET INFORMATION Call 581-7100, 355-ARTS, or 1-888-451-ARTS or visit the Kingsbury Hall Ticket Office, the University Union Desk or order on-line at www.arttix.org



Hijinks
Kites-Toys-Games
Best G-Rated Adult Toys

NEW LOCATION
HISTORIC WAREHOUSE DISTRICT
362 W PIERPONT AVE
531.7434

FASHION PLACE MALL
PROVO TOWNE CENTRE

THE BLUE GOAT
feature edition
UTAH'S ONLY LIVE BLUES RADIO BROADCAST!

NATIONAL BLUES ARTISTS
ON AIR, LAST MONDAY OF EACH MONTH
9:30-11:30 p.m. on the "Mighty 90.9"

FROM THE **DEAD GOAT SALOON**
A PRIVATE CLUB FOR MEMBERS

LIVE Bluegrass at the
is coming...
SkyBox AT THE GATEWAY

You're unique! You're Different!
And we can help you meet your match.
Place a FREE personals ad in the City Weekly
Call 575.7003

***10,000 FLYERS \$149**
Per Original 8 1/2 x 11 - Blk/20 lb White 1000 For \$18.95

Also Available: 10,000 Special on Full Color Flyers! Call For Pricing

COMPLETE PRINTING, COPY & BINDING
We Will Beat All Competitor's Prices & Coupons

Full Color | Multi Color | Single Color
Brochures, Business Cards, Envelopes, Letterhead, Flyers, Business Forms, Carbonless Forms, Newsletters, Postcards, Design & Layout

ZION PRINTING
5 3 2 - 3 0 7 0
DOWNTOWN SLC 450 South 300 West
Serving KRCL's printing needs for the last nine years!

KRCL 90.9FM PROGRAM SCHEDULE

	Monday	Tuesday	Wednesday	Thursday	Friday	Saturday	Sunday
5:30	MORNING NEWS (Free Speech Radio News & Others)						Dark Star Rising
6							Music
6:30							Radio High Country News
7	BREAKFAST JAM Eclectic mix of folk, acoustic rock and more						Native America Calling
8	with the Iceman	with James	with Mike C.	with Susanne	with Gary	Breakfast Jam Folk, rock and more	Living the Circle of Life Native American music and information
9	Roots n Blues Roots music-blues, folk, country, Cajun & more	All That Jazz Jazz of all types	Le Cafe Folk Folk & public affairs	Women: The Third Decade Divas & public affairs	Groovin' the Morn Funk, old school & soul	with Jo	with Max, Nino
10	with Troy	with L.E.	with Donna	with Babs	with Earl B.	Saturday Sagebrush Serenade Rock & roll's finest recordings	Sunday Sagebrush Serenade Folk & acoustic rock music
11:30	What's the Word	Civic Programming	This Way Out	The Environment Show	Latino USA	with John	with Phil or Lori
noon	Art Speak	Building the Good Society	Concerning Gays & Lesbian	The Nature of Things	La Voz de la Gente		
12:30	GLOBAL GUMBO Traditional and contemporary music from around the world						Across the Tracks Alternative, unique rock and roots
1	with Steven	with Spike	with Bill	with Chledu	with Ryan	with MC Welk	Bluegrass Express Traditional & contemporary bluegrass with The Old Man
2	DRIVE TIME Classic and alternative rock, country, jazz and folk-rock						Smile Jamaica Roots reggae
3	with Sabra	with Steve	with Teri	with Paul	with DJ Mike	with Robert	Fret n Fiddle Traditional American & Celtic music with Mark, Dean, Mike
4	Democracy Now Independent reporting on current events and issues						with Robert
5	A View from Here	Tala Koula	Bioneers 2	Knowledge in a Nutshell	Word Jazz		
5:30	Jambo Africa Music and info with Bill Wager	Voice of Polynesia Music and info with Ellen, Danny, Joel, Misi, Ivoni	Chinese Radio Music and info with Jennifer, Rachel & Yen	Voice of Vietnamese Music and info with Chinh & Friends	Music for Your Ears Jazz and Jazz-rap with Tony	Huzzah for Ska Ska music with Kelly, Scott & English	New Dimensions
6	Red, White & Blues Blues, just blues with JR or Truman Blue Goat Feature Edition 9:30pm Last Monday of month Live broadcast nationally-known blues artists	Hacienda Diferencia Latin music with Inma	Aural Decay Rock and roll with Dave Wednesday Night Live 9-10pm 2nd Wednesday of each month Live, local bands	La Planeta Rock En Espanol with Jonny B. Good & DJ N-Vision	S.O.A.P. (Sounds of a Party) R&B, hip-hop, soul with Sam Smith	Kickin' Judy Indie punk rock adventure with Tracy & Angie	Nexus Contemporary ambient music with Sohrab
6:30	Crossroads Blues with Ziggy	Ritmo Latino Salsa and Latin dance music with Panama	Grateful Dead & the Family Dawg Usually Grateful with Matthew	Not Available in Stores Musical connections with Karl	Friday Night Fallout Underground, Live Mix with Ebuay	Short Term Effects Pop-ish to obscure with Dylan	Lullaby in Rhythm Jazz, swing with Mickey
7	Total Harmonic Distortion Post-industrial, cyber-gothic with Avant Bone	Music	Absolute Elsewhere Noise as music with Brain	Night Flesh New directions in rock, Americana with Susan, Chris & Kris	Liquid Rhythms Techno, house and electronic DJ mixes with DJ XTC	Dark Star Rising Ethereal music with Troy F. continues to 6am	Cranial Circuitry with Alan Moss
8	Music	Breakfast of Champions Reggae, funk, jazz with Alan & Sherry	Hybrid Transmission with Dave	Illustrated Blues Trad. & contemp. blues with Jolene	Music		Music Salad with Dana & Angie
9							
10							
11							
12							
1							
2							
3							
4							
5							
6							
7							
8							
9							
10							
11							
12							
1							
2							
3							
4							
5							
6							
7							
8							
9							
10							
11							
12							
1							
2							
3							
4							
5							
6							
7							
8							
9							
10							
11							
12							
1							
2							
3							
4							
5							
6							
7							
8							
9							
10							
11							
12							
1							
2							
3							
4							
5							
6							
7							
8							
9							
10							
11							
12							
1							
2							
3							
4							
5							
6							
7							
8							
9							
10							
11							
12							
1							
2							
3							
4							
5							
6							
7							
8							
9							
10							
11							
12							
1							
2							
3							
4							
5							
6							
7							
8							
9							
10							
11							
12							
1							
2							
3							
4							
5							
6							
7							
8							
9							
10							
11							
12							
1							
2							
3							
4							
5							
6							
7							
8							
9							
10							
11							
12							
1							
2							
3							
4							
5							
6							
7							
8							
9							
10							
11							
12							
1							
2							
3							
4							
5							
6							
7							
8							
9							
10							
11							
12							
1							
2							
3							
4							
5							
6							
7							
8							
9							
10							
11							
12							
1							
2							
3							
4							
5							
6							
7							
8							
9							
10							
11							
12							
1							
2							
3							
4							
5							
6							
7							
8							
9							
10							
11							
12							
1							
2							
3							
4							
5							
6							
7							
8							
9							
10							
11							
12							
1							
2							

Over the past year you've heard lots of great live music on KRCL. From visiting musicians rolling through town to drop in for a few minutes on Breakfast Jam, Drive Time, Sunday Sage or Le Cafe Folk. You never know who might show up!

KRCL regularly schedules two live features as well. They are "Wednesday Night Live" (the third Wednesday of the month) on "Aural Decay" and "Bluegrass Live" (every other month) on the "Bluegrass Express". Furthermore there's the live broadcast of a national blues artist on the last Monday of the month, during the "Red, White & Blues" program. Live music abounds on community radio. Stay tuned to KRCL to find out who is scheduled for upcoming live performances.

Dan Bern



Watsonville Patio



Ponticello



Coming soon... KRCL LIVE! VOLUME 2

Exclusive cuts, recorded in the KRCL studios; these songs are not available anywhere else! The CD will feature over one hour of folk, rock, blues, country, bluegrass, and even a little jazz. Artists include Cowboy Junkies, Paul Kelly, Dan Bern, Darden Smith, Alison Pipitone, Watsonville Patio and more.

KRCL Live Volume 2 will only be available as a thank you gift for a \$75 donation to KRCL.

In addition, this year an exclusive companion postcard set will come with the CD, with one postcard, designed by various artists, for each song.

The CD's complete track list, and more info on the postcard companion, is on our website at

www.krcl.org

Serving Gourmet American Energy Food.

The Singing Cricket Cafe **Now Open For Sunday Brunch!**
~10:00 am to 4:00 pm~
~Special Menu~
Gourmet Sandwiches
Homemade Soups & Salads
MON-SAT 10:30-6:30 / SUN 1:00-4:00 / 673 E. 2240 S. / 487-0056
UNIQUE ATMOSPHERE

RENEL'S BAR & CAFE
A Non-Smoking Private Club for the Benefit of its Members
Fresh, Eclectic, Exciting Vegetarian Cuisine
Live Music Nightly—Jazz, Blues & Rock
We offer a tantalizing selection of martinis & wines by the glass
Open 7 days a week—Noon 'til 2am
136 HEBER AVE & SWEDE ALLEY • PARK CITY • 435-615-8357

PERSIAN GREEK ITALIAN **Café Med** TURKISH VEGETARIAN & MORE
COME TRY SALT LAKE'S BEST MEDITERRANEAN CUISINE
SUN-THU 11AM-9PM • FRI & SAT UNTIL 10PM
493-0100
420 EAST 3300 SOUTH • SLC
FREE APPETIZER OR DESSERT WITH AD.
EXPIRES (9/30/02)

For **RED HOT** stories every week...
Pick up the **City Weekly**
It's devilishly entertaining
801-575-7003

Salt Lake's Best Vegetarian
Sage's Cafe
VEGETARIAN ORGANIC Salt Lake City, Utah
473 E Broadway (300 South) 322.3790
www.sagescafe.com
• Nightly Gourmet Specials
• Lunch Buffet Wed-Fri
• Weekend Brunch
• Wednesday Nights All You Can Eat Pizza
• Open Wed-Sun
Chemical-Free Cuisine

CLOCKS & WATCHES MUSIC BOXES & UNIQUE GIFTS
It's About Time to listen to Salt Lake's Community Radio Station!
IT'S ABOUT TIME **ANTIQUUE TIME**
4700 S. 900 E. in Ivy Place 261-3388
163 E. 300 S. DOWNTOWN SLC 359-7990
Professional REPAIR SERVICE: Free Estimates
BUY • SELL • APPRAISE • RESTORE
HOURS: Mon-Fri 10am-6pm Sat til 5pm

Two New Music Programs Join the Weekday Morning Line-up on KRCL

This summer KRCL began airing two new music programs during the mid-morning time slot from 9 am to noon. Roots n' Blues airs Mondays and All That Jazz airs on Tuesdays. Both programs feature music by the early founders of American music as well as contemporary artists.

Here's what KRCL's mid-morning programs offer: Monday mornings on "Roots n' Blues", hosted by Troy, you'll hear the musicians that helped make blues, folk, country and Cajun music what they are today. These genres are uniquely American, and the music mix on "Roots n' Blues" adds a depth and richness that you'll appreciate. The music comes alive because you'll know more about it, what influenced its development and how contemporary artists are shaping it to reflect life in today's world.

Tuesday mornings on "All That Jazz", hosted by L. E., you'll hear American jazz musicians, the icons of the genre, doing what they do best. Their music is interspersed with information about how they developed as artists, the challenges they faced, the stories behind the songs and recordings they made famous. This program features both the men and women of jazz, bringing a fresh perspective, and jazz cuts not often heard on the radio, to the intermountain west.

Wednesday morning is the long-standing program, "Le Café Folk", with Donna. You'll hear a wonderful mix of traditional and contemporary folk music, and everything in between. This

KRCL is deeply grateful for the generous support of our listeners and underwriters.

YOU make us possible and we Thank You!

great music is mixed with timely community information, live performances by singer-songwriters, and interviews. There's always something interesting happening on "Le Café Folk".

Thursday mornings you'll hear "Women the Third Decade", hosted by Babs, who has been a programmer with KRCL since our early days. She brings an ever so interesting program of music by women to KRCL's airwaves. Divas such as Judy Garland, Ella Fitzgerald, Eartha Kitt and Aretha Franklin are highlighted in an interesting mix of songs and information about their lives and careers. Women's news and women in history are also featured.

Friday is Soul Day on KRCL and "Groovin' the Morn", hosted by Earl B., is the perfect way to start the fun of a weekend a little early. You'll hear funk and soul so good you'll start dancin' and singin', "and you know this!". Just listen a few times and you'll hear what we mean.

And, in standard KRCL fashion, these programs feature weekly interviews with people in the community who are helping to build a better, safer, healthier world for all of us. You'll hear about water conservation, recycling, community events, and preventing domestic violence and violence against women and lots more. So please, give a listen! It's radio worth your time.

BEST OF UTAH!

KRCL and our volunteers were recognized in the annual City Weekly "Best of Utah" issue:

John Florence of "Saturday Sagebrush Serenade" for Best Boomer Radio Show

"Wednesday Night Live" (during "Aural Decay" with Dave) for Best Live Radio Exposure for Locals

"Kickin' Judy" (with Tracy and Angie) in 2nd place for Best Radio Show

KRCL in 2nd place for Best Radio Station in Salt Lake!

THANKS TO THE CITY WEEKLY and thanks to YOU for your votes!

Renew Your Body • Nurture Your Senses • Be Well!

- Superior Skin & Body Care
- Microdermabrasion
- Botox
- Non-Invasive Cellulite Treatments
- Manicures & Pedicures
- Facial & Massage "Room for Two"
- Holistic Wellness & Body Detoxification
- Gift Certificates
- Spa & Bridal Packages
- Corporate Appr. Programs



Peony Gardens
Retreat & Wellness

2240 E. Laney Ave. (4650 S.) 272-4833
peonygardensretreat.com

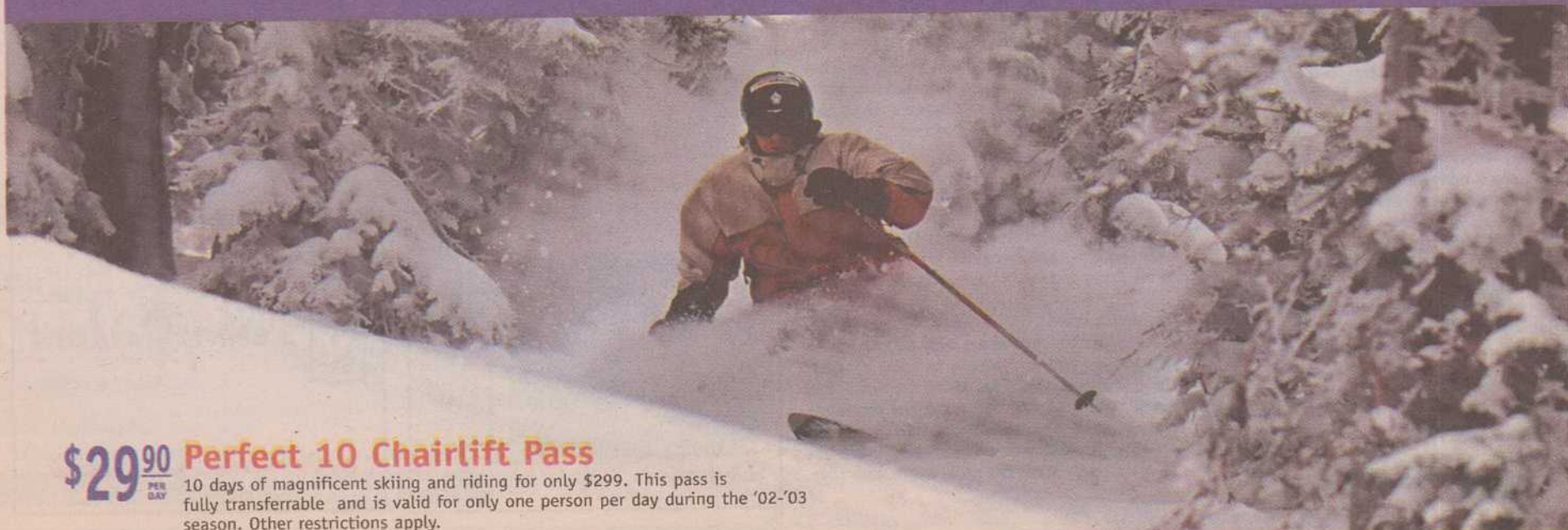
Save \$50 on Laser Hair Removal & Spider Vein Treatments
Offer good with ad on first treatment • expires 09/30/02
FREE Confidential Consultation
Very Gentle • Fast • Safe • Great Results • Best Lasers Available
Call 35-LASER
Laser Salon™
Doug McAllister, M.D.
508 East South Temple #112
www.lasersalon.com
Phone: (801) 355-2737

FREE Roommate Ads Buy-Sell-Trade Ads FREE
City Weekly
Call 801-575-7003
Deadline for Classifieds: Tues @ 5:00pm

2002 REDROCK BENEFIT
A CELEBRATION OF UTAH WILDERNESS
Monday September 9
Reception 5:00-7:00pm \$75 (includes Program)
Metropolitan Restaurant
Spirits and light dinner
Program 7:30-10:00pm \$20
Rose Wagner Performing Arts Center
Snacks, Drinks, Readings, Slide Show, Silent Auction
Craig Childs, Jack Dykinga, Amy Irvine, Mary Sojourner, Chip Ward
For more information, call SUWA at 801-486-3161 or go to www.suwa.org.
For tickets, call ArtTix at 801-355-ARTS/1-888-451-ARTS or go to www.arttix.org.
Proceeds benefit SUWA, a non-profit organization working to protect Utah's spectacular Redrock Wilderness.
southern utah wilderness alliance

At Snowbird, You Get More Of What You Buy A Season Pass For.

More Incredible Terrain - More Dependable Snow - Longest Season in Utah.
Hurry! Rates didn't go up this season — but they do after Labor Day!



\$29⁹⁰ **Perfect 10 Chairlift Pass**
PER DAY
10 days of magnificent skiing and riding for only \$299. This pass is fully transferrable and is valid for only one person per day during the '02-'03 season. Other restrictions apply.

\$35⁰⁰ **"Season Ticket" Plans**
FROM PER DAY
Plans for "individuals", "joint" purchases and "families" start as low as \$35 per day! Each person on the plan must purchase at least 10 days. Season Ticket plan rates are: 10-15 ski days at \$39/day (\$42/day after Labor Day); 20-35 ski days at \$37/day (\$40/day after Labor Day); and 40+ days are \$35/day (\$38/day after Labor Day). The value of unused days from the 2002-03 Season may be credited at the rate paid per day toward a new season ticket plan or pass purchase next season. Call for all the details.

\$99 **K-12 Student Unlimited Pass****
To make skiing and riding more affordable for families, the Bird has lowered its rates for student passes and now offers a matching pass to students grades K-12 for only \$99 when a parent or guardian purchases a Snowbird Unlimited Pass, an Unlimited Chairlift Pass, an Alta-Snowbird Pass*, or at least 10 additional new days† in a "Season Ticket" plan. Or get a Student Unlimited Chairlift Only Pass for \$199 when you purchase it separately. Proof of enrollment required.

\$399 **College Student Unlimited Chairlift Pass**
Our 10 chairs access the whole mountain. Proof of full-time enrollment is required. (Post Labor Day: \$449)

\$499 **College Student Unlimited Pass**
Ski or ride the Tram & Chairs all season long for one terrific price. Proof of full-time enrollment is required. (Post Labor Day: \$549)

\$799 **Unlimited Chairlift Pass**
Our 10 chairs access the whole mountain, including spectacular Mineral Basin with its two high-speed quads. (Post Labor Day: \$899. A Mid-Week Chairlift Only Pass is also available for \$599, \$699 after Labor Day.)

\$899 **Snowbird Unlimited Pass**
Ski or ride the Tram & Chairs all season long for one terrific price. (Post Labor Day: \$999. A Mid-Week Snowbird Unlimited Pass is also available for \$799, \$899 after Labor Day.)

\$1200 **Alta Snowbird Pass***
Ski both of these incredible, interconnected areas all season long with this one pass. (After September 15, 2002: \$1300)

New! Halfpipe, rails and an expanded terrain park!

Why Get A Snowbird Season Pass or Season Tickets?

Longest season in Utah—One of the first to open and ALWAYS the last to close. Snowbird ended 6 of the last 7 seasons on Memorial Day or later.

500+ average inches of famed Little Cottonwood Canyon Powder.

2,500 acres of legendary terrain—3,240 vertical feet.

Straight-to-the-lifts convenience.

Free UTA bus access for season ticket holders.

Season Sales and Information: 933-2215

Buy online at www.snowbird.com

Pre-season Mountain School Sales: 933-2170

snowbird

For People with a passion for skiing and riding.

* Please note: Alta does not allow snowboards.
** The K-12 Student Unlimited and K-12 Student Unlimited Chairlift passes do not include Alta's lifts. The availability of passes may be limited at any time.
† If you are rolling over unused days from last season, your purchase must include at least 10 new days in addition to the days being rolled over, and the total number of days in your plan must be in increments of 5 days. Call for details.