

---

**Enter KRCL's  
New Numbers  
Game and take a  
chance on  
winning big  
prizes.  
See page 3 for  
details.**

---



208 West 800 South, Salt Lake City, Utah 84101  
Phone (801) 363-1818

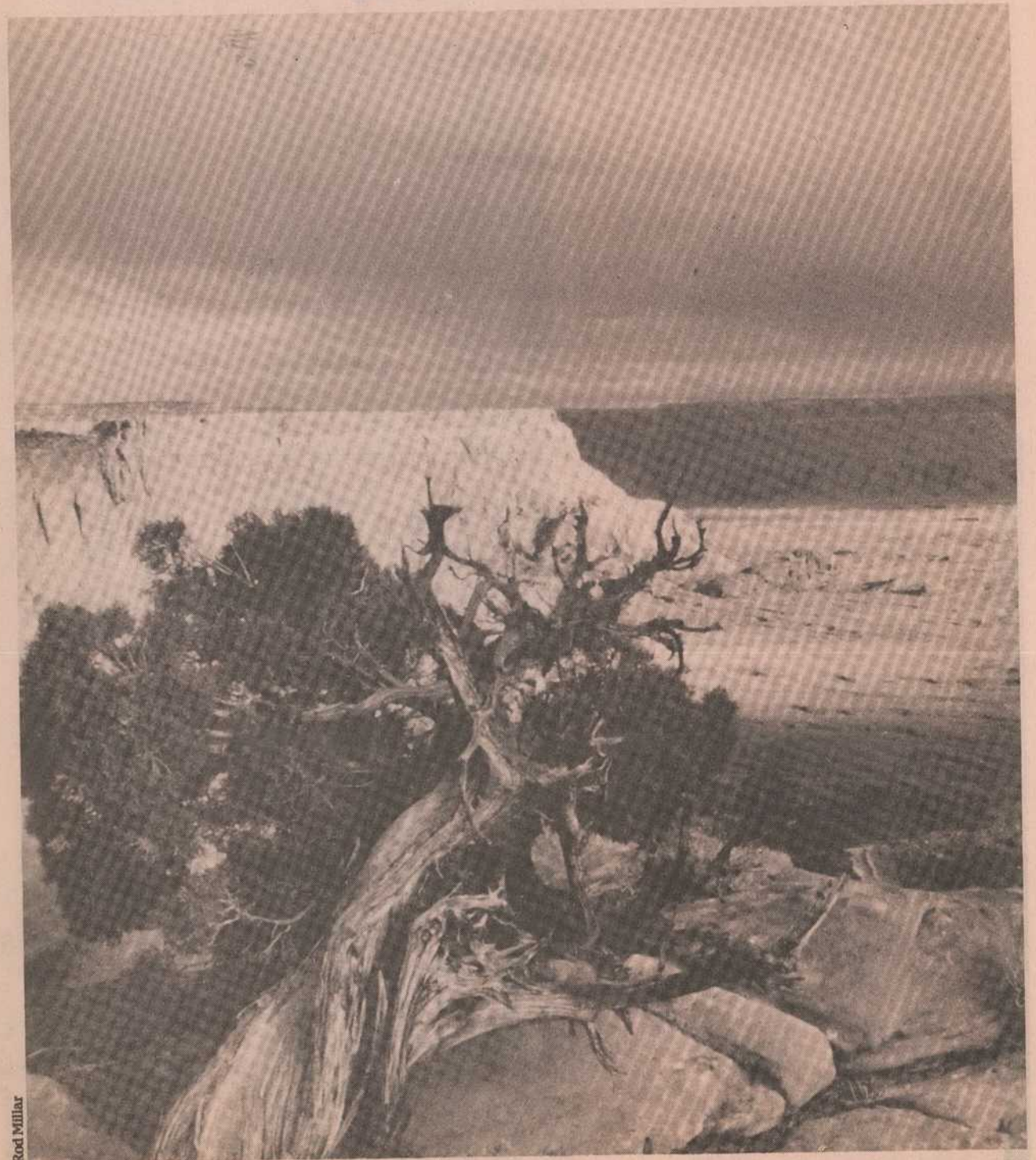
Non-Profit Organization  
U.S. Postage  
PAID  
Salt Lake City, Utah  
Permit Number 3973

Please notify us of any change of name or address.  
The post office will not forward program guides.



---

## Too Early to Breathe Easy



Rod Millar

Program Guide

February-March 1985

---

## Nuclear Wastes in Utah: Too Early to Breathe Easy

---

**W**e're off the hook, right? It was a close call, but Utah's Davis Canyon is no longer being considered for the nation's first permanent nuclear waste repository. Right?

Not so fast.

Environmentalists and others skeptical of proposals to place high-level nuclear wastes inside the Gibson Salt Dome near Canyonlands National Park are still slugging it out with the Department of Energy (DOE) as the citizen hearing process enters its latest round.

Referring to the preliminary ranking of possible sites released by DOE, Judith Hinchman, program director of Utah's High-Level Nuclear Waste Policy Group, says, "Essentially, December 19th in my mind was a circus. It's a shame that DOE created such fanfare around the list."

That list ranked Davis Canyon as fourth or fifth in most categories of assessment. Since one the top three sites will be tested for final determination of the location of the repository, it has been widely believed that

Utah's site is out of the running. In that preliminary ranking, the top three sites recommended were Yucca Mountain, Nevada; Hanford Atomic Reservation near Richland, Washington; and Deaf Smith County near Amarillo, Texas.

However, it is too early to rule out Utah's participation in further "site characterization" studies, claims Terri Martin of the National Parks and Conservation Association. "Canyonlands is not off the hook," Martin says. "DOE's selection is tentative, and could conceivably change over the 90-day public comment period." She adds that, even if Utah's ranking is not changed when the final environmental assessments are issued this summer, the Davis Canyon site may be subjected to testing if one of the top three sites is found unsuitable.

The disqualification of one or more sites seems likely, according to Hinchman, because of technical problems, lawsuits by several states, and political

---

*By Sandra McIntyre*



The American Conservation Company

**FREE ENERGY AUDIT**  
A computer heat loss analysis of your home.

**GUARANTEED ENERGY SAVINGS**  
Save up to 40% of your energy bills.

**QUALITY CONSERVATION PRODUCTS AT DISCOUNTED PRICES**  
High tech furnaces, thermostats, thermal windows, wood stoves, insulation and more.

Financing Available

CALL 532-5555

474 Third Ave., SLC, UT 84103

## Report to the Listener

The facelift of KRCL studios continues. Since the last issue of our program guide, rooms have been painted, a new record library constructed, the walls of master control, the sound studio and production rooms 1 and 2, carpeted. Our new production console stands ready for installation. Not bad for a winter's work.

The carpeting of studio walls will result in a better on-mike sound in each of our broadcast areas. The installation of a new production console will result in better sounding recorder messages and locally-produced programs. Our progress in improving the physical space at KRCL portends a larger leap forward—our Corporation of Public Broadcasting (CPB) qualification application. If approved, the station will receive an annual cash grant from the CPB. The amount of this annual grant will vary according to the overall size of the station operating budget. The initial year's grant should approximate \$20,000. In other words, another Radiothon's worth of revenue without program interruption.

To qualify for this grant we must add an additional staff person. \$10,000 of station revenue is needed to accomplish this goal.

KRCL's New Numbers Game gives you a chance a on of ten prizes with your tax deductible donation of \$10 and will help us raise \$10,000. Take a chance on KRCL. We

need 1,000 listeners to participate in this effort. That means you!

In addition to the annual cash award, CPB qualification means an increased ability to purchase programming. Valuable technical assistance will be available to station staff, resulting in better management of overall operations. Each of these improvements is aimed at bettering our sound, the bottom line in our business.

In addition to KRCL's New Numbers Game and the upgrading of facilities, a number of program changes are in the works. Several new features will make their debut beginning in April. Stay tuned; we think you'll like the changes.

And speaking of changes, about 50 new volunteers are currently in training, our largest crop of new blood in quite a while. If you are a graduate of KRCL training, which means you've completed the workshops and submitted a demo tape, but have since lost touch with us, call us and let us know if you're still interested in becoming a KRCL volunteer. Ask for operations manager Donna Land Maldonado when you call.

That's it for now. Stay tuned for more details on our New Numbers Game and help make this fifth on-air anniversary year our best ever!

John Greene  
Station Manager

## Behind the Sounds

### Board of Trustees

Chair  
Gerald Kinghorn

Vice-Chair  
Gail Della Piana

Board Members  
Larry Ficks, Bob Flores, Maria Garciaz, Barb Guy, Steve Holbrook, Jon Lear, Howard Lundgren, Genaro Padilla, Tim Rice, Bruce Roberts, Paul Wharton, Maggie Wilde, Kathy Wilson

### Staff

Station Manager  
John Greene

Operations Manager  
Donna Land Maldonado

Office Manager  
Maggie Laun

Development Director  
Lynne Van Dam

### KRCL Volunteers

Cindy Adams, Mike Anderson, Mary Aguilar, Natalie Atherton, George Alex, Ed Bagley, Bob Bedore, Jim Bilagody, Tom Blackwood, Karen Bowers, Dave Bowyer, Chuck Bradley, Jon Bray, Brent Burdette, Mark Cantor, Steve Caras, Dale Carlson, Brad Collins, Omel Contreras, James Cowell, Charles Cunningham, Babs De Lay, Percy Devine, Marvin Dixon, Lewis Downey, Bernice Egl, Jim Elder, Bill Espinoza, Myron Fairbanks, Victor Fernandez, Larry Ficks, Bob Flinner, Matt Flinner, Rex Flinner, Doc Floor, Hugh Garner Jr., Mack Gift, Nick Gioello, Chris Glittens, Elena Gonzales, Juan Gonzales, J.R. Greene, Barb Guy, John Halaliku, Jimmy Hamamoto, Mike Hayes, Bill Henkel, Mic Huerta, Carol Huey, Stan Holmes, Cardie Jimenez, Dave Iverson, Mark Jackman, Dave Jacobs, Mike Katsan, Brian Kelm, J.D. Keeley, Erik Kingston, Randy Klein, Joel Knuth, Bill Komlos, Andy Langton, Bill Larned, Ray Larsen, Leo Leckie, Jeannie Lesh, Debra Levine, Stephanie Loker, Julie Luaders, Lisa Mace, Roma Mackenzie, Ewell Madry, Mladen Maric, Dan Maryon, Desiree Mays, Scott McCune, Sandra McIntyre, Mary Menconi, Ken Meyer, Craig Millet, Annina Mitchell, Samboon Mongkolsombat, Jeffrey Montague, Maureen Mooney, Robert Moss, Kevin Murphy, Jim Oughton, Hang Nguyen, Roland Pearson, Terinell Pelley, Harry Piltz, Vicki Pugmire, Dean Petaja, Steve Rasmussen, Randy Reed, Linda Reeder, Frederico Reyes, Nini Rich, Dave Santivasi, Joe Sargent, Marilyn Scharine, Richard Scharine, John Schellinger, Jerry Schmidt, Ellen Selu, Wayne Selu, Kurt Setzer, Perry Shepard, John Shlaos, Butch Shumway, Craig Smith, Gary Smith, David Spencer, Shirley Stevens, Evy Tessman, Christie Thorp, Pete Tinker, Andy Trauba, Paul Truex, Dean Twede, Joel Ujakiola, Robert Velasquez, Dana Wanders, Ron Ward, Terry Tempest Williams, Darrell Young, Dolly Young

### Program Guide Staff

Editor  
Lynne Van Dam

Production and Design  
Tim Fredrickson

Contributing Writers  
John Greene, Maggie Laun, Donna Land Maldonado, Sandra McIntyre

Contributing Photographers  
Mark Jackman, Rod Millar, Jerry Schmidt, Skip Schmiett

Circulation  
Maggie Laun

## Facelift Thank Yous

KRCL, at last, is getting a much needed facelift. Our production facilities, which have on occasion drive even the most patient person into a frenzied fit, are now being refurbished. In addition, the record library has been moved and is in the process of being rebuilt, the walls of master control, the sound studio and the two production rooms are being covered with soft brown carpeting, and a new production console is almost ready to install. And the final touch, of course, is the pink glow of the newly painted walls.

If this sounds like a bundle of materials and tons of work, it is just that and we could never have accomplished it all without scads of donated materials, time and labor. We want to thank very much the following companies and people.

### MATERIALS

#### KSL

For miles and miles of cable and various and sundry pieces of equipment and materials.

#### Standard Builders Supply

For general building materials, nails and lumber.

### The Carpet Barn

For yards of soft brown carpeting for our walls.

### Mountain States Marketing and Sales, Inc.

For materials, advise and expertise.

### VOLUNTEERS

#### Engineering

Russ Gantner for wiring our new production console. Lewis Downey and Gary Smith for endless engineering hours in wiring the new production facilities and console.

#### Record Library

Dave Bowyer, Joe Sargent, Dave Iverson, Dana Wanders and Frog.

#### Production Table

Bub Farrell.

#### Tape Recorder Consoles

Doc Floor.

#### Wall Carpeting

Doc Floor, Ron Freel, Randy Klein and Ray Larsen.

#### Painting

Annina Mitchell, Jeffrey Montague and Myron Fairbanks.

Thank you all.

# 10 for 10 for 10,000

## KRCL's New Numbers Game

FOR A \$10 DONATION YOU CAN TAKE A CHANCE ON 1 OF 10 FABULOUS PRIZES AND GIVE KRCL A CHANCE TO RAISE \$10,000.

Imagine waving a magic wand over that \$10,000 and changing it into \$20,000. Sound like a numbers game to you? Well, it is.

You see, KRCL has a goal. We want to become a member of the Corporation for Public Broadcasting (CPB). Membership in CPB would mean:

- An annual grant of \$20,000 or more from CPB. (Voila! Now are you beginning to see how the magic works?)
- Access to additional programming.
- Availability of valuable technical assistance from CPB experts.

### So, why do we need \$10,000?

Well, to qualify for CPB a station like KRCL must have five full-time employees. We have four. So, in KRCL's fifth on-air year, we want to hire one new employee to go from four to five. Five years plus five folks is 10—10 for 10 for \$10,000 for one brand new employee and CPB qualification and, voila, magic, we double our

money to \$20,000 via a CPB grant.

Have we got a numbers game?

We're playing the odds that you will take a chance with us and play our numbers game. For just a \$10 tax deductible donation you can take a chance on winning one of the 10 following fabulous prizes:

- 1. ACOUSTIC/ELECTRIC HANDMADE GUITAR**  
Top of the line in Honda guitars. Spruce top, rosewood sides and back. All solid woods with gold hardware. Value: \$1,000. Donated by Wagstaff Music, 5634 S 900 E, SLC, UT.
- 2. 25 ALL-DAY, ALL-AREA SKI PASSES**  
25 passes to Snowbird for the 1984-85 season. Value: \$550. Donated by Snowbird, Snowbird, UT.
- 3. 2 NIGHTS FOR 2 AT ALTA LODGE**  
Two nights for two people including breakfast and dinner (four full dinners and breakfasts). Lift tickets and gratuity not included. Value: \$362. Donated by Alta Lodge, Alta, UT.
- 4. BICYCLE**  
18-speed Trak 420 women's bicycle. Value: \$330. Donated by Fisher's Cyclery, 2175 S 900 E, SLC, UT.
- 5. CONTINENTAL DINNER FOR 8**  
Five course continental cuisine for eight with international flavor using the finest ingredients available. Will include seafood course and meat course either prepared in your home or in the private dining area at the Salt Lake Roasting Company. Value: \$300. Donated by Salt Lake Roasting Company, 249 E 400 S, SLC, UT.



### 6. 2 SEASON SKI TOURING PASSES AND 2 LESSONS

These Brighton Ski Touring Center passes and lessons are good for the 1985-86 ski season. The lessons are private for 1-1/2 hours each. Value: \$180. Donated by Brighton Ski Touring Center, PO Box 17848, SLC, UT.

### 7. FRAMED LITHOGRAPH PRINT

Kathryn C. Wilson lithograph painting in a limited signed edition. Value: \$175. Donated by Segó Gallery, Triad Center, SLC, UT.

Value: \$175. Donated by Segó Gallery, Triad Center, SLC, UT.

### 8. TRAK CROSS-COUNTRY SKI PACKAGE

A basic cross country ski package carefully chosen to fit the needs of the beginning Nordic skier. Ski gear includes Trak Oslo skis, ottefella Start bindings, Alpina Sarna boots, and touring poles. Value: \$175. Donated by REI, 1124 Brickyard Road, SLC, UT.

### 9. BOB MARLEY RECORD SET

Nine LPs including Catch a Fire, Burnin', Natty Dread, Live!, Rastaman Vibration, Exodus, Kaya, Survival and Uprising. Bob Marley: Soul Rebel, Natural Mystic book also included. Value: \$99. Donated by Cosmic Aeroplane, 258 E 100 S, SLC, UT.

### 10. AVALANCHE TRAINING FOR X-COUNTRY SKIERS

An introduction to snow study, avalanche forecasting and safe back country skiing practices for the 1985-86 season. The seminar consists of two evening lectures and two days in the field. Brighton Ski Touring's yurt will be the base camp for the field sessions. You will spend a Saturday night in the yurt. This is intended for ski tourers and back country winter travelers. Value: \$65. Donated by Brighton Ski Touring Center, PO Box 17848, SLC, UT.

Two chances for \$20 will also get you a one year subscription to the KRCL program guide.

The drawing for prizes will be held on Sunday, March 3rd at the KRCL studios, 208 West 800 South. All tickets must be in our studios for the drawing which will be held at 2 p.m.

Note: KRCL staff, board members, volunteers and their immediate families are ineligible for the drawing. No donation is necessary for participation.



**TAKE A CHANCE ON WINNING AND HELP KRCL AND ALL OUR LISTENERS WIN IN OUR NEW NUMBERS GAME. FOR TICKET INFORMATION CALL 363-1818**



208 West 800 South  
Salt Lake City, Utah 84101/363-1818  
Special thanks to the businesses who donated the prizes for our New Numbers Game.



## KRCL Letters

As a longtime listener to KRCL, I want to thank you for the coverage of the Global Town Meeting aired December 9th. I hope you continue to support U.S. radio and this kind of communication. It is a service to all of us.

Myself and my associates hope you carry the February program as the momentum builds.

Ted K.

Please accept my apology. I won't be able to fulfill my pledge 'til this January. I have encountered some financial problems and since my income is quite limited anyway, when things don't work out I don't have much at all to spare.

I would have written sooner but I have been very busy and preoccupied. I feel strongly about supporting and maintaining the public media. The commercial stations just don't have much to offer in comparison.

I listened to the last U.S.-Russia town meeting. It was a very special event as far as I'm concerned and I look forward to the next one. I also enjoy the Sagebrush Serenade and Bluegrass Express and the Circle of Life.

Maybe it's my radio but I have a lot of trouble tuning into KRCL often. If strengthening your signal would help reception in Logan and you're considering doing so, do it. Otherwise when I can tune in I will and enjoy and when I can't, I can't.

Karen H.

May we earmark our money for New Dimensions. We feel strongly that this kind of program is important for our (all of us) growth. I would hope that you will encourage more people to listen to it.

Nancy and David

Please continue your excellent efforts in diversified radio programming. Thank you Brad Collins for keeping us alive "in this pit in the desert they decided to call the Salt Lake Valley."

Shari-Anne H.

Here's my \$10 check topping my previous \$50. The station is worth \$50 or so every six months. You bring me certainly the most unique and diversified entertainment this valley has to offer. Every bit of music is fantastic (excepting Saturday night punk)! P.A. 91, Pacifica, Stardate, Wingspread and

Consider the Alternatives are all usually very interesting and informative.

The only change I would make would be in the area of Saturday night. We all have our tastes in music, but the "noise punk" turns my tastes right off.

All of your time and efforts are very much appreciated by me. If I had to put up with the "other" stations I would go nuts. (You know exactly what I mean.)

Matthew W.

I try to listen to Linda Reeder's program every week. I don't always succeed. I did hear the program where she was interviewed. I enjoyed learning more about her personally. She asked if any one had any suggestions for programs. I don't know if she's covered this area, but I'd like to hear a program on infant stimulation programs in this state and preschool programs.

We live in Tooele and have a developmental delayed infant in the program here. Out program out here leaves a lot to be desired. Lots of the people involved even question the usefulness of starting them so young. There have been opinions on both sides in the professional literature.

Anyway, that's my idea.

Suzanne K.

First of all, let me say thanks for a great radio station! You truly are the only alternative to the vast sea of mediocrity and merchandising that is the rest of Salt Lake City radio. Ninety-five percent of my radio listening time is divided between KRCL and KUER. I also contribute to both of you.

Second, I am writing to register my dissatisfaction with the disproportionate amount of what I would call funk-soul-disco music that you have been playing lately. I have noticed more of it this year than ever before.

I realize that this is just a matter of personal taste, and that you are trying to please everybody (which is never easy), but I just don't know of anyone who listens to this stuff or even likes it. Given the cultural makeup and demographics of this area, I feel the amount of funk-soul-disco in your programming schedule is, well, disproportionate.

I consider myself to be reasonably open minded, and I like just about everything from Fret 'n Fiddle to reggae to blues. I even like James Brown and Otis Redding and Sam and Dave. This letter is intended to be friendly and constructive feedback and I hope it is accepted in that spirit.

Thanks for listening.

Bill T.

Keep the funk! We realize that KRCL listeners are entitled to their opinions, but after Babs read the letter on her show from the unsouful listener, we felt it our duty and pleasure to voice our opinions. We've only lived here in Logan for four and a half months, but you've all put us back into a part of music that is a necessity to our being. Without soul and funk where would we be? Let the body groove!

We are the listener-sponsors because we appreciate Babs's Wednesday Drive Time

Magazine, and Chuck and Ewell's Friday soul-funk music. We pay Logan Cable TV to get KRCL reception just so we can hear this music. KRCL is our only alternative and a superb alternative at that. We look forward to every Wednesday and Friday to keep us funky.

Frankly, those of us in the soul-funk underground could not exist behind the Zion Curtain without you. Keep up the good work! We need it and you!

In the groove...

Shelley and Dave R.

I want to thank you for airing the Global Town Meeting last Sunday night. I don't know how many people actually listened to it but there were a group of my friends gathered together to listen to it. Another friend of mine also had a group over to listen at their house.

Positive input and energy is so important, I am glad you make such programming available. I also really enjoy La Cafe Folk program on Monday mornings.

Patrick B.

I would just like to thank you for airing the first and second Global Town Meetings. The service you are doing for the community is incredible and wonderful. Thank you and keep up the good work.

Jeff A.

I thought you might like to know that the PSA you're running for our alcohol study at the Veteran's Administration Medical Center has brought us a number of usable subjects. I haven't heard the ad (unbelievable since my radio stays on KRCL with very little exception) but the information our callers are giving us suggests that it's a good announcement. We'd like you to keep playing the ad since we'll be doing our study through early spring and have had good success via the PSA.

For your own information you have listeners from 24 to 42 years of age who never drink, who drink socially, who drink to excess, who are former alcoholics, who use or have used drugs of all types and to all degrees—including many who have never indulged, and who combine all possible mutations of drink-no drink, use drugs-use no drugs. Add to that education levels from "barely finished high school" to "several degrees" and it seems that you have a quite varied audience—and we're tapping only males!

Again, thanks for the help in subject recruitment. You play great music and serve the community well.

Nancy B. Cohn, Ph.D.  
Associate Director, Neuropsychology Research, Veterans Administration Medical Center

I was listening to the re-broadcast of the first KRCL show today, and was struck by how much the station has grown and how I have come to love it.

When I was in on Christmas Eve with some cans, a particularly beautiful song on the French show caught me by your office, where I paused to listen. As I looked around that space, I noticed how your personality came

shining through so strongly by the decor you have up. It was a small moment of beauty, but one which I will remember.

It is not just the music or programming that is so special about the station, but the personality of all who have devoted so much to make a go of it.

Ever since my first exposure to alternative radio back in 1967, I have been a passionate listener, and KRCL has become a part of my life.

Thank you for all that you have done, and continue to do. It means a lot to me and scores of others.

Best of luck, and all good things, in the coming new year.

John B.

First let me start by saying I think your effort is hot! Putting on the best music Salt Lake City could tune in!

But—there's always one of those, huh—I was incredibly disappointed the other day when I tuned in 12 to 12:30 Monday's Concerning Gays. I'm sorry gang, everybody has a right to believe how and what they want—agreed—I included—I can't support something that turns my stomach. Probably doesn't matter to you; thought I'd say it anyway.

Dave J.

I'm embarrassed to admit to myself that I was to busy *working* (the "W" word) during your radiothon to call in my pledge. As chairman of SPLORE and a member of the Disgusting Brothers Band and admirer of Radio Free Utah, please accept my thanks for your help with our events. Also, please accept money (enclosed). You're the greatest.

Steve Mimmaugh

Just a note of thanks for all your wonderful programs. Especially Bluegrass Express, Smile Jamaica, Tuesday Rhythm Edition of Drivetime Magazine. Sorry this is late. I lost it. With my mind.

Keep going strong.

Jah Guide

Thank you for broadcasting the Global Town Meeting Sunday. Enclosed is a monthly pledge contribution. Have a nice day.

Paul W.

Thank you at KRCL for producing Global Town Meeting. It was a joy.

Norman C.

## Special Features

<b>Sunday</b>			
First Person Radio	8 a.m.	Utah Wilderness Report	7 a.m.
Women's News	11 a.m.	Weekend Entertainment	9:30 a.m.
Utah Wilderness Report	12 noon	Women's News	10:30 a.m.
In The Public Interest	1 p.m.	In The Public Interest	11:27 a.m.
Environmental Update	3 p.m.	Panorama Hispano	1:50 p.m.
		Byline	3:57 p.m.
		Environmental Update	4:30 p.m.
<b>Monday</b>		<b>Friday</b>	
Environmental Update	9:55 a.m.	Weekend Entertainment	7 a.m.
In The Public Interest	11:27 a.m.	In The Public Interest	11:27 a.m.
Cinco Minutos	1:55 p.m.	Byline	3:57 p.m.
Byline	3:57 p.m.	Central America Update	6 p.m.
		Weekend Entertainment	7:30 p.m.
<b>Tuesday</b>		<b>Saturday</b>	
Central America Update	7 a.m.	Nuclear Waste Report	11 a.m.
Women's News	9:55 a.m.	In The Public Interest	1 p.m.
In The Public Interest	11:27 a.m.		
Enfoque Nacional (Spanish)	1 p.m.	<b>Daily</b>	
Byline	3:57 p.m.	Stardate airs at 8 a.m., 5:30 p.m. and 10 p.m.	
<b>Wednesday</b>			
Nuclear Waste Report	7 a.m.		
In The Public Interest	11:27 a.m.		
Central America Update	1:55 p.m.		
Byline	3:57 p.m.		

## Sunspot Schedule

<b>Sunday</b>			
Circle of Life	9 a.m.	Solo Flight	3 p.m.
Sagebrush Serenade	12:30 p.m.	Night Vinyl	11 p.m.
Bluegrass Express	4 p.m.		
Nexus	9 p.m.	<b>Thursday</b>	
		Early Times	5 a.m.
<b>Monday</b>		Drive Time Magazine	6 p.m.
Breakfast Jam	7 a.m.	Natural Highway	8 p.m.
Cafe Folk	10:30 a.m.	Fret 'n Fiddle	11 p.m.
Drive Time Magazine	4:30 p.m.		
Great Basin Blue	8 p.m.	<b>Friday</b>	
		Breakfast Jam	7:30 a.m.
<b>Tuesday</b>		Attitude Adjustment Session	10 a.m.
Breakfast Jam	6:30 a.m.	La Voz del Pueblo	1 p.m.
Women or Nothing	11 a.m.	Drive Time Magazine	5 p.m.
Audio Gymnastics	3 p.m.		
Generic Radio	9 p.m.	<b>Saturday</b>	
		Asian Chimes	7:30 a.m.
<b>Wednesday</b>		Sagebrush Serenade	10:30 a.m.
Breakfast Jam	6 a.m.	Smile Jamaica	4 p.m.
Fairmenist Revolution	12:30 p.m.	Phonosynthesis	8 p.m.



2356 So. Main Salt Lake City, Utah 84115  
801-355-8890

### Cabin Fever

from ridiculous to sublime  
creating cards & discussions  
that break the monotony!

66 WEST FOURTH SOUTH



400 South 249 East  
Salt Lake City, Utah 84111  
363-7572

## Subscribe to the Program Guide

Name \_\_\_\_\_  
Address \_\_\_\_\_  
City/State/Zip \_\_\_\_\_  
Telephone \_\_\_\_\_

### Membership Dues (annual)

- \$15—low-income, student, elderly
- \$20—supporting (regular)
- \$30—supporting (plus KRCL T-shirt)
- \$50—sustaining (plus KRCL T-shirt), may be paid \$10/month
- \$100 or more—patron (plus KRCL T-shirt), may be paid \$25/month
- New subscription
- Renewal/addition

T-shirt size:  S  M  L

### All contributions are tax-deductible. Mail to:

**KRCL 91 FM**  
208 West 800 South  
Salt Lake City, Utah 84101  
(801) 363-1818

Original Acoustic Music

LAUGHS!!

DESERTAIRE

FEATURES

**CHRIS PROCTOR**

**HARDIN DAVIS**

AND THE

**DESERT-BREATH THEATRE**

Sunday FEB 23  
6:30 p.m.

\$3 cover  
PAINTED WORD  
401 So. 4th W.

live broadcast on KRCL FM 91

AND ON MAR 23

**GARY PACKARD**

# The Public Affairs Schedule

Compiled by Donna Land Maldonado

February and March public affairs programming will focus on the nationally declared themes for the two months—February is Black History Month and March recognizes International Women's Day and Women's History Week. In a separate box there is a list of programs for you to be aware of, it does not include guests during Drive Time Magazine or during the other interview types of programming.

That's not all! KRCL is focusing on the dangers of a possible nuclear waste repository in Utah. The Thursday evening P.A. 91 programs will center around the topic of nuclear waste, which will be complemented by interviews and a continual update on the status of the proposed site.

The third Global Town Meeting will, once again, be aired on KRCL live. See the Sunday schedule for the exact date and time. Peace won't just happen, it'll take the commitment and time of a lot of folks all over the world and the Global Town Meeting is taking steps toward the networking of prominent people with common-folk (like you and me) and talking peace. It's called communication.

And speaking of communication, the debut of "Thinking Outloud" will take place Friday, March 22nd at 11:30 a.m. It's a production of Jeffrey Montague made possible by a grant from the Utah Endowment for the Humanities. Topic? What's happening in Utah. Please join us and find out.

## Sunday

### First Person Radio 8 a.m.

News, information and perspectives of Native Americans as seen by Native Americans.

### New Dimensions 7 p.m.

- Feb. 3: "Truth is a Pathless Land: A Dialogue with J. Krishnamurti."
- Feb. 10: "Happiness is Inside," with Tara Singh.
- Feb. 17: "Theatre of Life" with Gabriells Roth.
- Feb. 24: Desertaire.
- Mar. 3: "Personal Power in a Changing World," with Sun Bear.
- Mar. 10: Special: Global Town Meeting.
- Mar. 17: "Inner Sound," with Jill Purce.
- Mar. 24: Desertaire.
- Mar. 31: "Good, Better, Best: Peak Performing," with Charles Garfield.

### Radio Rep 10 p.m.

- Feb. 3: "Nathan and Tabileth," by Barry Bermange.
- Feb. 10: "Portions Mechanically Reproduced," by Carol Adorjan; and "I, Also, Am a Human Being," by Jan Myral.
- Feb. 17: "The Man of Destiny," by George Bernard Shaw.
- Feb. 24: "The Tales of Edgar Allen Poe," adapted by Yuri Rasovsky and Michelle Faith.

## Monday

### Morning Light 8:30 a.m.

"Consider the Alternatives," a SANE

production on alternative notions of today's global concerns.

### Our Art 11:30 a.m.

Interviews with local or visiting artists produced by hosts Desiree Mays, Carlie Jimenez or Marilyn Scharine.

- Feb. 4: Gail Wronski, "Waves Home for Hartin Lamis."
- Feb. 11: Ballet West.
- Feb. 18: Marion Carter with African tales.
- Feb. 25: Charles Ketchum, Utah Symphony schools programs.
- Mar. 4: Mark Strand, poet.
- Mar. 11: To be announced.
- Mar. 18: To be announced.
- Mar. 25: To be announced.

### Concerning Gays 12 noon

A program to help educate the public on a different lifestyle.

### P.A. 91 7 p.m.

"Conversations from Wingspread," a free exchange of ideas, produced by the Johnson Foundation.

## Tuesday

### Morning Light 8:30 a.m.

"First Person Radio," news, information and perspectives about and by Native Americans. A Migizi Communications production.

### Community Notes 11:30 a.m.

- Feb. 5: Museum Notes, with host Terry Tempest Williams from the Museum of Natural History.
- Feb. 12: Working Together, with hosts Shirley Stevens and Karen Bower.
- Feb. 19: Primetime, issues of those in life's "primetime."
- Feb. 26: Utah Legal Services, information on legal matters in layperson's terms.
- Mar. 5: Museum Notes.
- Mar. 12: Working Together.
- Mar. 19: Primetime.
- Mar. 26: Utah Legal Services.

### Handicapables 12 noon

Join host Linda Reeder as she interviews those who are or work with the "handicapped."

### P.A. 91 7 p.m.

- "Totally Wired" presents artists in electronic sound as they explore the musical development of the global village. A John Diliberto and Kimberly Haas production.
- Feb. 5: "Another Look at Computer Synthesis."
- Feb. 12: "The Synthipop Tradition: Kraftwerk and Depeche Mode," "Synthesists For Hire."
- Feb. 19: "Electronic Dreams," part 1.
- Mar. 5: "Electronic Dreams," part 2.
- Mar. 12: "Electronic Dreams," part 3.
- Mar. 19: "Electronic Dreams," part 4.
- Mar. 26: "The Technological Artists: Robert Moog and D.B."

## Special Programming for Black History Month February 1985

- February 1 11:30 a.m. "Cooking," black expressions.
- February 7 8:30 a.m. "Black Expatriots," seeking artistic freedom in Europe.
- February 8 11:30 a.m. "Storytelling in the Oral Tradition," black expressions.
- February 14 8:30 a.m. "Quanders: A Tricentennial Celebration," a black family's celebration of over 300 years in America.
- February 14 11:30 a.m. "Black Colleges."
- February 15 11:30 a.m. "Broken Vessel," a drama documentation of the black struggle for civil rights throughout history in the United States.
- February 18 11:30 a.m. Marion Carter with African tales.
- February 21 8:30 a.m. "The Miseducation of the Black Student."
- February 21 11:30 a.m. "Lena Home and Her Music."
- February 22 11:30 a.m. "The Rebirth of the Nation," the resurgence of the Black Muslim movement.
- February 28 11:30 a.m. "Profile: Zora Neale Hurston."
- February 29 11:30 a.m. Congressman Louis Stokes' keynote address on Martin Luther King Day at the University of Utah.

The continuing series, In Black America, views and perspectives of today's society through the eyes of black America, is heard Fridays at 8:30 a.m.

## Wednesday

### Morning Light 8:30 a.m.

"Common Ground": views from a humanistic perspective. A Stanley Foundation production.

### Senior Sound Off 12 noon

From the Division of Aging: Percy Devine, Marge Drury and Dolly Young rotate in addressing issues and questions on the golden years of life.

### Fairmenist Revolution 12 noon

Host Mac Gift explores the consciousness toward humanism, the letting go of stifling habits and attitudes.

### Enfoque Nacional 1 p.m.

A Spanish national news program en Espanol. A Western Community Bilingual Radio and Radio Bilingual production.

### P.A. 91 7 p.m.

"Consider the Alternatives": alternative notions of today's global concerns (repeat of Monday's Morning Light).

## Thursday

### Morning Light 8:30 a.m.

- Feb. 7: "Black Expatriots," seeking artistic freedom in Europe.
- Feb. 14: "Quanders: A Tricentennial Celebration," a black family's celebration of over 300 years in

- Feb. 21: "The Miseducation of the Black Student."
- Feb. 28: "The Politics of Song: Zimbabwe's Revolution through Music."
- Mar. 7: "Native American Women: Keepers of the Tradition," the woman is the keeper of the heritage, the teacher of children and the doorway to life.
- Mar. 14: "Foreign Aid: Perpetuating Power."
- Mar. 21: "The Native Hawaiians: Turning the Tide," a view of the Hawaiian community in a struggle to preserve its culture.
- Mar. 28: "A Preferential for the Poor."

### Lunch Encounter 11:30 a.m.

- Feb. 7: "Children at Risk: Stolen Childhood—The Sexual Abuse of Children."
- Feb. 14: "Black Colleges."
- Feb. 21: "Lena Home and Her Music." (45 min.)
- Feb. 28: "Profile: Zora Neale Hurston."
- Mar. 7: The Golden Cradle, Immigrant Women in the United States, part 1: "The Journey," past and present reminiscences of women who survived the journey.
- Mar. 14: The Golden Cradle, part 2: "The Half-Open Door," quota systems, exclusion laws, detention and deportation.
- Mar. 21: The Golden Cradle, part 3: "The Alley, the Acre and Back a' the Yards," establishing unique ethnic

## Special Programming for International Women's Day and Women's History Week March 8th and the Week of March 3rd, 1985

KRCL programming will continue throughout the month of March

- March 1 11:30 a.m. Local activities and events for the month of March.
- March 1 12 noon Ruth Hubbard, "The Politics of Women's Biology: The Challenge of Scientific Sexism."
- March 7 8:30 a.m. Native American women, keepers of the tradition.
- March 7 11:30 a.m. The Golden Cradle, Immigrant Women in the United States, part 1: "The Journey," past and present reminiscences of women who survived the journey.
- March 8 11:30 a.m. Women in Utah.
- March 8 12 noon Utah Issues, from the feminine perspective.
- March 14 11:30 a.m. The Golden Cradle, part 2: "The Half-Open Door," quota systems, exclusion laws, detention and deportation.
- March 21 11:30 a.m. The Golden Cradle, part 3: "The Alley, the Acre and Back a' the Yards," establishing unique ethnic communities that endured the economical and social pressures.
- March 28 11:30 a.m. The Golden Cradle, part 4: "In America, They Say Work is No Shame," immigrant laborers and union organization.

The continuing feature, Women's News, is heard Sundays at 11 a.m., Tuesdays at 9:55 a.m., and Thursdays at 10:30 a.m.

- Mar. 28: communities that endured the economical and social pressures.
- The Golden Cradle, part 4: "In America, They Say Work is No Shame," immigrant laborers and union organization.

### Panorama Hispano 1:30 p.m.

A news magazine in Spanish, produced by Wisconsin Public Radio.

### P.A. 91 7 p.m.

- Feb. 7: Toxic Waste in the Pacific Northwest, part 1: "The Prosperity We Reap, the Garbage We Consume."
- Feb. 14: Toxic Waste, part 2: "What Lurks Beneath the Surface of Prosperity? Three Contaminated Communities."
- Feb. 21: Toxic Waste, part 3: "The Lethal Cargo: Hazardous Waste on the Move."
- Feb. 28: Toxic Waste, part 4: "The Continuing Search: A Solution to Pollution."

## Friday

### Morning Light 8:30 a.m.

"In Black America": views and insights of today's society through the eyes of black America.

### Lunch Encounter 11:30 a.m.

- Feb. 1: "Cooking," black expressions.
- Feb. 8: "Storytelling in the Oral

- Feb. 15: Tradition," black expressions.
- "The Broken Vessel," a drama documentation of the black struggle for civil rights throughout the history of the United States. (1 hr.)
- Feb. 22: "The Rebirth of the Nation," the resurgence of the Black Muslim movement. (1 hr.)
- Feb. 29: Congressman Louis Stokes' keynote address on Martin Luther King Day at the University of Utah, January 15th, 1985.
- Mar. 1: Local activities and events for International Women's Day and Women's History Week.
- Mar. 8: Women in Utah.
- Mar. 15: "This Bridge Called Me Back," essays, letters and poems on cultural identity and conflict in the American melting pot. A Pacifica production.
- Mar. 22: "Thinking Outloud."
- Mar. 29: To be announced.

### Lunch Encounter 12 noon

- Feb. 1: To be announced.
- Feb. 8: Utah Issues, with Bill Walsh.
- Feb. 15: "The Broken Vessel" continues.
- Feb. 22: "The Rebirth of the Nation" continues.
- Feb. 29: To be announced.
- Mar. 1: Ruth Hubbard, "The Politics of Women's Biology: The Challenge of Scientific Sexism."
- Mar. 8: Utah Issues.
- Mar. 15: "This Bridge Called Me Back" continues.
- Mar. 22: To be announced.
- Mar. 29: To be announced.

Please Support Our Underwriters



You Are Invited To Attend A

# Global Town Meeting

"It's the folksy non-political contacts between citizens of different countries that ultimately make the difference in establishing trust and enabling us to share common goals of peace."

Danaan Parry



The technology of satellite up-links and global conference calls will connect citizens all over the world who are actively working on innovative projects to bring people together and improve global relations. You are invited to participate, all that you need is a radio and a telephone.

Sunday March 10th 7:30 p.m.

On KRCL 91 FM

US RADIO

# Sunday

**6 to 7 a.m.**  
**Scooba Dooba**  
 (continues from Saturday)  
 Hamamoto presents an assortment of oddities and niceties during the wee hours.

**7 to 10 a.m.**  
**Living The Circle Of Life**  
 Jim Bilagody with Native American music, news and information. (Donna Land hosts the first Sunday of each month.)

**10 a.m. to 2 p.m.**  
**Sagebrush Serenade**  
 Natalie Atherton plays the alternative in country, rock, folk and traditional.

**2 to 5 p.m.**  
**Bluegrass Express**  
 Join the Flinners—Papa Bob and sons Matt and Rex—for the best in bluegrass; music that is at the root of a lot of the country and folk tunes popular today.

**5 to 6 p.m.**  
**Greek Hour**  
 John Shilaos and Mike Katsan host.

**6 to 7 p.m.**  
**Voice Of Polynesia**  
 Music and information from the Pacific islands.

**7 to 8 p.m.**  
**New Dimensions**

**8 to 10 p.m.**  
**Nexus**  
 New age music with John Schellinger.

**10 to 11 p.m.**  
**Radio Rep**  
 Radio drama (see public affairs schedule)

**11 p.m. to 1 a.m.**  
**Tentacles**  
 Unique music from the avant garde, including jazz, new wave, rock and electronic, with host Kurt Setzler.



**1 to 3 a.m.**  
**Lively Up Yourself**  
 Music with "rhythm" and a lively beat as in reggae, new wave and rock. Hosted by Mike Hayes.

**3 to 6 a.m.**  
**Anything and Everything**  
 Featuring rock 'n roll hits from the '60s, '70s and early '80s. Mostly late '60s and '70s. The greatest hits with Craig Smith and James Cowell.

# Monday

**6 to 8:30 a.m.**  
**Breakfast Jam**  
 A Monday morning mix to help you ease into the week. Join host Bill Henkel for a fusion of rock, jazz, R + B, and avant garde music.

**8:30 to 9 a.m.**  
**Morning Light**  
 "Consider The Alternatives"—global concerns.

**9 to 11:30 a.m.**  
**Le Cafe Folk**  
 Contemporary folk music with a touch of tradition hosted by Donna.

**11:30 a.m. to 12 noon**  
**Our Art**  
 With Marilyn Scharine, Carlie Jimenez or Desiree Mays.

**12 noon to 12:30 p.m.**  
**Concerning Gays**

**12:30 to 2 p.m.**  
**La Voz Del Pueblo**  
 Senor Federico Reyes presents Tex-Mex and rancho for the Monday edition.

**2 to 4 p.m.**  
**Radio Libre**  
 Popular music from the French-speaking world, plus news of the French community (with English subtitles).



**4 to 6:30 p.m.**  
**Drive Time Magazine**  
 Lynne Van Dam and John Greene alternate as hosts, each with an eclectic blend of rock, sweet sounds and important information. Note the segues.

**6:30 to 7 p.m.**  
**Pacifica News**

**7 to 7:30 p.m.**  
**Conversations from Wingspread.**

**7:30 to 9:30 p.m.**  
**Great Basin Blues**  
 The best in blues, N.Y. to L.A., Texas to Chicago. Blow away them good old Monday Blues with Brian Kelm.

**9:30 to 11:30 p.m.**  
**Just The Blooze**  
 Blues continue into the evening with Dave Spencer.

**11:30 p.m. to 1:30 a.m.**  
**Blues Rhythm and Blues**  
 How influential have the blues been? Tune in and find out with host Joel Knuth.

**1:30 to 3:30 a.m.**  
**The Grab Bag**  
 Join host Ed Bagley for a pleasant mix of rock from the Sixties, Seventies and Eighties; chosen at random from the grab bag.

**3:30 to 6 a.m.**  
**Celestial Seasonings**  
 Spice your early morning with a gentle mix of music from folk to rock, served by your host Terinell Pelley.



# Tuesday

**6 to 8:30 a.m.**  
**Breakfast Jam**  
 Contemporary and mainstream jazz mixed with light rock to suit your morning mood. Hosted by Tom Blackwood.

**8:30 to 9 a.m.**  
**Morning Light**  
 "First Person Radio"—Native American weekly news.

**9 to 11:30 a.m.**  
**Women Or Nothing**  
 Music and information from a woman's perspective—that of Julie Lueders.

**11:30 a.m. to 12 noon**  
**Community Notes**  
 Rotates among Terry Tempest Williams, Shirley Stevens and Karen Bowers, Primetime (nationally produced), and representatives of Utah Legal Services.

**12 noon to 12:30 p.m.**  
**Handicapables**  
 With Linda Reeder.

**12:30 to 2 p.m.**  
**La Voz Del Pueblo**  
 Dean Tweede hosts, with Latino pop music for the Tuesday edition.

**2 to 4 p.m.**  
**Audio Gymnastics**  
 Yo! Want to have more fun than humans should be allowed to have? Want to hear more types of music in one two-hour stretch than anywhere else? Tune in, with Ken and hear all this plus your requests!

**4 to 6:30 p.m.**  
**Drive Time Magazine**  
 Mic Huerta picks up your drive with rhythm—reggae and ska plus—as he informs you of local happenings.

**6:30 to 7 p.m.**  
**Pacifica News**

**7 to 7:30 p.m.**  
**Radio Arts**  
 "Totally Wired."

**7:30 to 9:30 p.m.**  
**Generic Radio**  
 Not really. The playlist reads: reggae, new wave, rockabilly and new music. Programmed by Barb Guy.

**9:30 to 11:30 p.m.**  
**Beat Crazy**  
 Starting off with a scream—new wave and assorted nuts with Andy Trauba. So, c'mon cats! Let's go beat crazy!

**11:30 p.m. to 1:30 a.m.**  
**Mission Impossible**  
 The agents: George Alex and Bob Bedore. The mission: to play two hours of progressive music. Impossible?

**1:30 to 3:30 a.m.**  
**Pleasant Grooves**  
 Yonder rides the rock on an endless stretch of grooves, opening new dimensions to you. Your hosts click dark and car clutch—go open the dusty doors of classic 60s and 70s rock.



**3:30 to 6 a.m.**  
**Beat The Rooster**  
 Join Dave Bowyer or Brent Burdette each week for a fine blend of true rock, comedy and trivia.

# Wednesday

**6 to 8:30 a.m.**  
**Breakfast Jam**  
 Butch Shumway or Eric Kingston will make waking a pleasure with a blend of jazz and folk music designed for the morning.



**8:30 to 9 a.m.**  
**Morning Light**  
 "Common Ground"—international issues.

**9 to 11:30 a.m.**  
**Jazz Quart**  
 Mike Anderson helps you appreciate jazz. Nothing to indicate it's midweek or midmorning—just good jazz.

**11:30 a.m. to 12 noon**  
**Senior Sound Off**  
 With Dolly Young, Percy Devine or Marj Drury.

**12 noon to 12:30 p.m.**  
**Fairmenist Revolution**  
 With Mac Gift.

**12:30 to 2 p.m.**  
**La Voz Del Pueblo**  
 Omel Contreras hosts, with Latin music and information on Hispanic views on the Wednesday edition.

**2 to 4 p.m.**  
**Solo Flight**  
 Host Nick Gioello emphasizes the art of guitar music: solo and lead, acoustic and electric.

**4 to 6:30 p.m.**  
**Drive Time Magazine**  
 Babs De Lay focuses all her energy into a tight mix, with dance music, Weekend Entertainment and issues.

**6:30 to 7 p.m.**  
**Pacifica News**

**7 to 7:30 p.m.**  
**Consider The Alternatives**  
 Global concerns.

**7:30 to 9:30 p.m.**  
**Aural Decay**  
 Old rock and new rock, accentuated with rockabilly, reggae and whatever is handy. Hosted by Dave Santivasi and Steve Caras. It may be habit-forming.

**9:30 to 11:30 p.m.**  
**Night Vinyl**  
 Join host Dave Jacobs as he continues the night-flight with his assortment of the rock genre.

**11:30 p.m. to 1:30 a.m.**  
**Rough Mix**  
 Your host Leo plays a mixture of music styles that shows both the diversity and the enjoyment to be found in all types of music.

**1:30 to 3:30 a.m.**  
**Altered States**  
 Dave Iverson serves as tour guide for exploring acoustic, electric and keyboard oriented rock plus other oddities just for fun.

**3:30 to 6 a.m.**  
**Early Times**  
 A distinctive blend of folk, rock and country, well aged to bring out the flavor it was named for. Served up by Lisa Mace as a night cap or an early morning eye-opener.

# Thursday

**6 to 8:30 a.m.**  
**Breakfast Jam**  
 Ease into the morning with blends of rock, folk, jazz and other assorted goodies with your host Jerry Schmidt.

**8:30 to 9 a.m.**  
**Morning Light**  
 "The Third World."

**9 to 11:30 a.m.**  
**This Feminine Position**  
 Maggie Laun brings you music by, for or about women. Interviews at 10:00 on a wide variety of topics pertinent to women.

**11:30 a.m. to 12:30 p.m.**  
**Lunch Encounter**  
 Local, national and international public affairs.

**12:30 to 2 p.m.**  
**La Voz Del Pueblo**  
 Memo Espinoza presents Mexican music from north and south of the border for Thursday's edition.



**2 to 4 p.m.**  
**Potpourri**  
 Music of varying genres with a different host from week to week.

**4 to 6:30 p.m.**  
**Drive Time Magazine**  
 Host Perry Shepard.

**6:30 to 7 p.m.**  
**Pacifica News**

**7 to 7:30 p.m.**  
**Political Issues**

**7:30 to 9:30 p.m.**  
**Natural Highway**  
 A blend of alternative country, blues, and rock and roll, hosted by Randy Reed.

**9:30 to 11:30 p.m.**  
**Fret 'N Fiddle**  
 Traditional folk music from here and abroad, depending on your host, who could be Lewis Downey, Pete Tinker, Paul Truex or Mark Cantor. You'll get a variety.

**11:30 p.m. to 1:30 a.m.**  
**Utah-Slavia**  
 Utah's eastern European heritage lives! Proving the beauty of diversity we focus on the music of Yugoslavia, provided by Mladen Maric, Craig Miller and friends.

**1:30 to 3:30 a.m.**  
**Eclectic Rock**  
 An array of rock and roll.

**3:30 to 6 a.m.**  
**Twilite Toons**  
 C.W. Cunningham brings you a diverse collection of rock, folk, jazz and most anything. At 5:30 local music is spotlighted—an opportunity for you to showcase your works.

# Friday

**6 to 8:30 a.m.**  
**Breakfast Jam**  
 Motown, R + B, soul, blues—music to make you move. Hosted by Bill Larned.

**8:30 to 9 a.m.**  
**Morning Light**  
 "In Black America."

**9 to 11:30 a.m.**  
**Attitude Adjustment Session**  
 Chuck Bradley does some soul adjustment to get you ready for the weekend.

**11:30 a.m. to 12:30 p.m.**  
**Lunch Encounter**  
 Local, national and international public affairs.

**12:30 to 2 p.m.**  
**La Voz Del Pueblo**  
 Elena Gonzales hosts Friday's edition, with Hispanic music and information on local happenings.

**2 to 4 p.m.**  
**R + B Hideout**  
 New soul is what you're looking for? It's here. Downtown funk brought to you by Ewell Madry with Mary Aguilar the first Friday of each month.

**4 to 6:30 p.m.**  
**Drive Time Magazine**  
 Friday brings you the Professor of R+B, Larry Ficks, presenting rhythm and blues and old rock and roll, plus social issues information.

**6:30 to 7 p.m.**  
**Pacifica News**

**7 to 9 p.m.**  
**KRCL Jukebox**  
 Music from the Fifties, Sixties and Seventies to get to the root of your rock and roll fantasies. Hosted by Bill Komlos.

**9 to 11 p.m.**  
**The G Men**  
 The most arresting music to be found. Hosts Hugh Garner and Chris Gittins are the "G" men.

**11 p.m. to 2 a.m.**  
**Dead Air**  
 Join Andy Langton for a mix of classic rock and roll from the Rolling Stones to the Grateful Dead.

**2 to 4 a.m.**  
**The Dream Circuit**  
 Electronic, avant garde and experimental music, featuring local bands. Hosted by Mark Jackman.

**4 to 6 a.m.**  
**Gospel Connection**  
 Contemporary gospel that encompasses all categories of music. Tune in to Carol and Marvin Dixon for your early morning start.

# Saturday

**6 to 7 a.m.**  
**Gospel Connection**  
 (continues from Friday)  
 Contemporary gospel that encompasses all categories of music. Tune in to Carol and Marvin Dixon for your early morning start.

**7 to 10 a.m.**  
**Asian Chimes**  
 Music and information from the communities of Thailand, the Philippines, China and Viet Nam. Presented by hosts Samboom Mongkolosmat, Vic Fernandez, Darrell Young and Hang Nguyen.

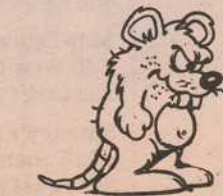
**10 a.m. to 2 p.m.**  
**Sagebrush Serenade**  
 From the best known to the least known rock artists of the Sixties, don't miss "one of KRCL's best" with Dale Carlson.

**2 to 5 p.m.**  
**Smile Jamaica**  
 Reggae—the roots, as well as current releases. Join Michael Hatisis and Myron Fairbanks as they take you through the music of Jah. As an added bonus, "The Island Hour," the archives of reggae.

**5 to 7 p.m.**  
**American Music**  
 Rockabilly with Robert Moss.

**7 to 9 p.m.**  
**Phono Synthesis**  
 Host Jon Bray offers the latest in new wave, rockabilly, punk and dance music.

**9 to 11 p.m.**  
**No Guarantee**  
 Noise punk, avant rock, avant punk, noise rock, avant noise, punk rock. But, no guarantee. Host Ron Ward.



**11 p.m. to 4 a.m.**  
**Behind The Zion Curtain**  
 Synthetic, authentic punk—hard core! Brad Collins is the guilty one who cracks your Saturday nights and Sunday morns with the sounds of the new wave.

**4 to 6 a.m.**  
**Scooba Dooba**  
 Hamamoto presents an assortment of oddities and niceties during these wee hours.

# February-March 1985 Program Guide

	SUNDAY	MONDAY	TUESDAY	WEDNESDAY	THURSDAY	FRIDAY	SATURDAY
6 a.m.	Scooba Dooba	Breakfast Jam	Breakfast Jam	Breakfast Jam	Breakfast Jam	Breakfast Jam	Gospel Connection
7 a.m.		Breakfast Jam	Breakfast Jam	Breakfast Jam	Breakfast Jam	Breakfast Jam	
8 a.m.	Living The Circle Of Life	Morning Light	Morning Light	Morning Light	Morning Light	Morning Light	Asian Chimes
9 a.m.		Morning Light	Morning Light	Morning Light	Morning Light	Morning Light	
10 a.m.		Le Cafe Folk	Women Or Nothing	Jazz Quart	This Feminine Position	Attitude Adjustment Session	
11 a.m.		Le Cafe Folk	Women Or Nothing	Jazz Quart	This Feminine Position	Attitude Adjustment Session	
12 p.m.	Sagebrush Serenade	Our Art	Community Notes	Senior Sound Off	Lunch Encounter	Lunch Encounter	Sagebrush Serenade
1 p.m.		Concerning Gays	Handicapables	Fairmenist Revolution	Lunch Encounter	Lunch Encounter	
2 p.m.		La Voz Del Pueblo	La Voz Del Pueblo	La Voz Del Pueblo	La Voz Del Pueblo	La Voz Del Pueblo	
3 p.m.	Bluegrass Express	Radio Libre	Audio Gymnastics	Solo Flight	Potpourri	R+B Hideout	Smile Jamaica
4 p.m.		Radio Libre	Audio Gymnastics	Solo Flight	Potpourri	R+B Hideout	
5 p.m.	Greek Hour	Drive Time Magazine	Drive Time Magazine	Drive Time Magazine	Drive Time Magazine	Drive Time Magazine	American Music
6 p.m.	Voice Of Polynesia	Drive Time Magazine	Drive Time Magazine	Drive Time Magazine	Drive Time Magazine	Drive Time Magazine	
7 p.m.	New Dimensions	Pacifica News	Pacifica News	Pacifica News	Pacifica News	Pacifica News	Phono Synthesis
8 p.m.		Wingspread	Radio Arts	Consider The Alternatives	Political Issues	Political Issues	
9 p.m.		Great Basin Blues	Generic Radio	Aural Decay	Natural Highway	Natural Highway	No Guarantee
10 p.m.		Great Basin Blues	Generic Radio	Aural Decay	Natural Highway	Natural Highway	
11 p.m.	Radio Rep	Just The Blooze	Beat Crazy	Night Vinyl	Fret 'N Fiddle	The G Men	
12 a.m.	Tentacles	Just The Blooze	Beat Crazy	Night Vinyl	Fret 'N Fiddle	The G Men	
1 a.m.		Blues/Rhythm and Blues	Mission Impossible	Rough Mix	Utah-Slavia	Dead Air	Behind The Zion Curtain
2 a.m.	Lively Up Yourself	Blues/Rhythm and Blues	Mission Impossible	Rough Mix	Utah-Slavia	Dead Air	
3 a.m.		The Grab Bag	Pleasant Grooves	Altered States	Eclectic Rock	The Dream Circuit	
4 a.m.		The Grab Bag	Pleasant Grooves	Altered States	Eclectic Rock	The Dream Circuit	
5 a.m.	Anything and Everything	Celestial Seasonings	Beat The Rooster	Early Times	Twilite Toons	Gospel Connection	Scooba Dooba
6 a.m.		Celestial Seasonings	Beat The Rooster	Early Times	Twilite Toons	Gospel Connection	

## Thanks to our underwriters

**Acoustic Music**  
857 East 400 South  
Salt Lake City

**Brighton Ski Touring Center**  
P.O. Box 17848  
Salt Lake City

**Cabin Fever**  
66 West 400 South  
Salt Lake City

**Carpet Barn**  
3725 Redwood Road  
West Valley City

**Catalyst Magazine**  
Salt Lake City

**City Typesetting**  
767 South State Street  
Salt Lake City

**Cosmic Aeroplane**  
258 East 100 South  
Salt Lake City

**Cromptons**  
5195 Emigration Canyon  
Salt Lake City

**D. B. Coopers**  
19 East 200 South  
Salt Lake City

**Fisher's Cyclery**  
2175 South 9th East  
Salt Lake City

**Fowler, Ferguson, Kingston  
and Ruben**  
350 South 400 East  
Salt Lake City

**In The Mood**  
850 East 900 South  
Salt Lake City

**Painted Word**  
401 South 400 West  
Salt Lake City

**Performance Audio**  
2358 South Main  
Salt Lake City

**REI**  
1124 Brickyard Road  
Salt Lake City

**Rio Grande Cafe**  
270 South 455 West  
Salt Lake City

**Salt Lake Roasting Company**  
249 East 400 South  
Salt Lake City

**Sego Gallery**  
Triad Center  
Salt Lake City

**Skip Schmielt Photography**  
740 West 1700 South  
Salt Lake City

**Smokey's Records**  
1515 South 1500 East  
Salt Lake City

**Snowbird**  
Snowbird, Utah

**Standard Builders Supply**  
220 West 2700 South  
Salt Lake City

**Sun Futon**  
Sugarhouse  
Salt Lake City

**Sundance**  
Provo Canyon, Utah

**Two Guys From Italy**  
Arrow Press Square  
Salt Lake City

**Utah Museum of Natural History**  
University of Utah  
Salt Lake City

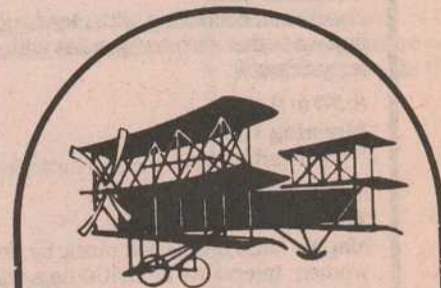
**Wagstaff Music Company**  
5634 South 900 East  
Salt Lake City

**Walking Owl Books**  
1260 East 400 South  
Salt Lake City

**Wasatch Touring**  
702 East 100 South  
Salt Lake City

**Yengich, Rich, Xaix and Metos**  
72 East 400 South  
Salt Lake City

**The Zephyr**  
301 South West Temple  
Salt Lake City



**D.B. Coopers**



Dulcimers  
Guitars, Lessons  
Repairs  
**Acoustic Music**  
857 East 400 South  
Salt Lake City, Utah 84102  
Call (801) 531-7066



**In The Mood**  
Hair Design and Color  
850 East 900 South • 616 363-3071

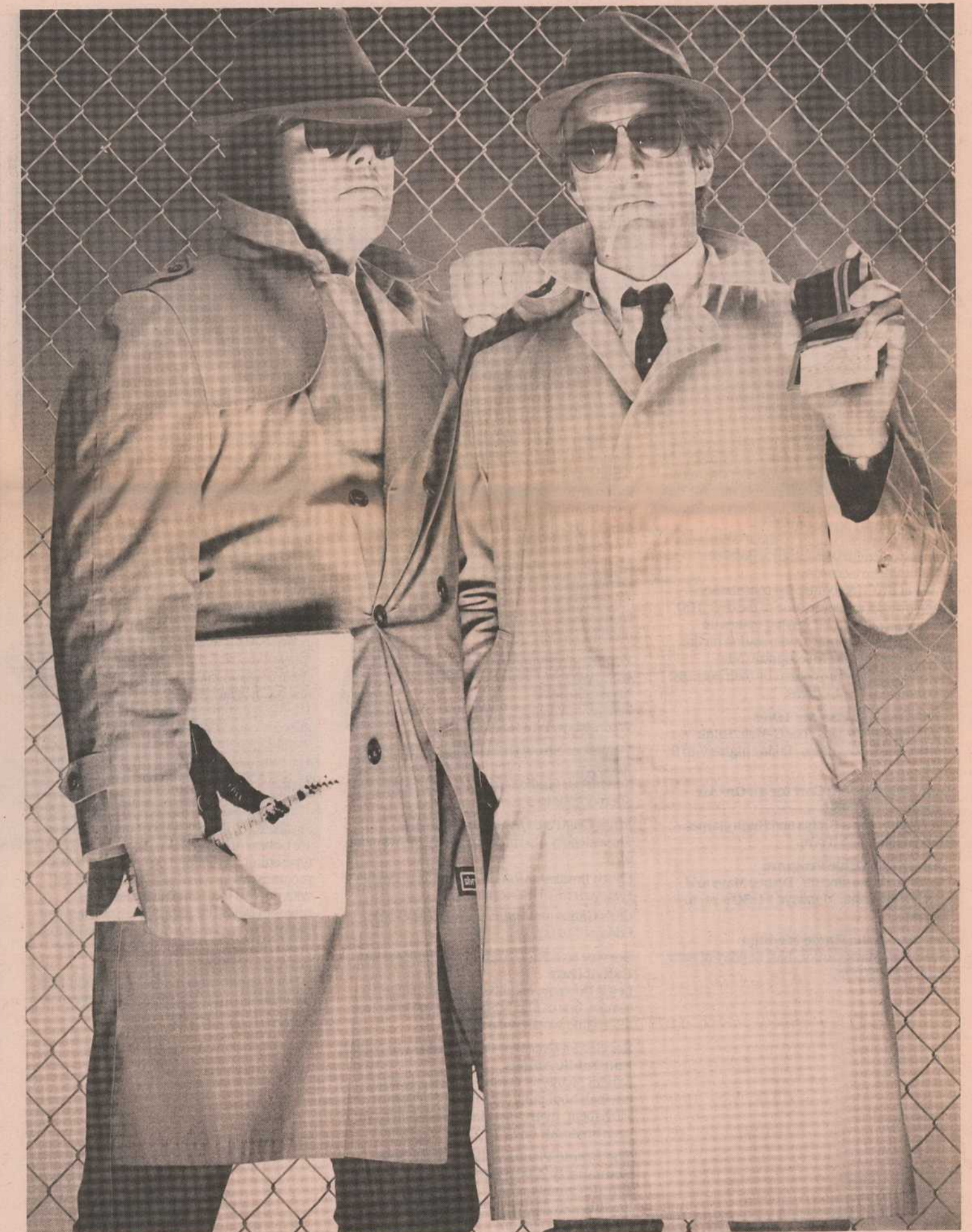


Cosmic Aeroplane still buys and sells used books and records. We pay top dollar for entire collections, sets and individual items. Please call or stop by if we can be of service to you.



(801) 533-9409  
258 East 100 South  
Salt Lake City, Utah 84111

## Award winning volunteers



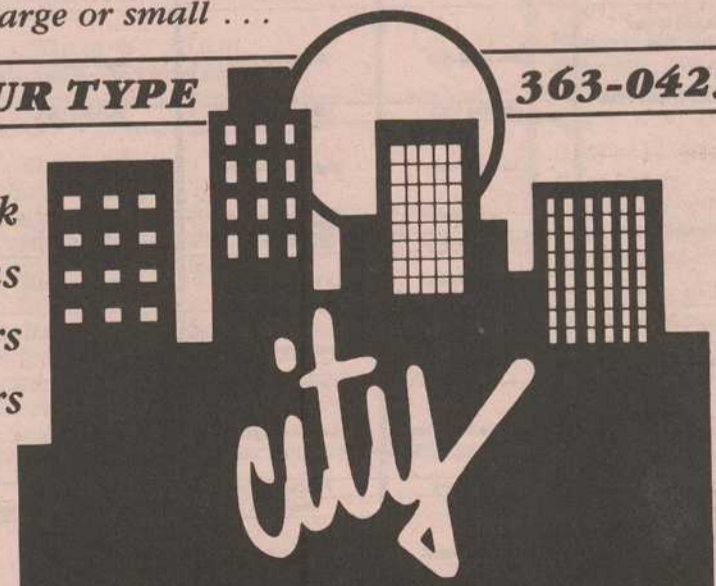
The G Men—Hugh Garner and Chris Gittins.

whether your needs are large or small . . .

**'CITY' CAN SET YOUR TYPE**

**363-0423**

- Original art work
- resumes • invitations
- posters and flyers
- brochures and newsletters
- logo designs
- business cards and letterheads



**TYPESETTING**

We offer a complete line

of services . . . give us a call and we'll help



767 South State Street • Salt Lake City, Utah 84105



**K**RCL had its annual birthday/holiday party on Saturday, December 9th at the Salt Lake Indian Center. At this party, KRCL staff and volunteers took time out to honor ourselves and to pay special tribute to those volunteers who have excelled in various aspects of community broadcasting.

We at KRCL recognize the contributions made by each and every one of the over 100 volunteers at KRCL. It is what makes us different than any other radio station on the dial. We would like to recognize those volunteers who were chosen by their peers as excelling in these 11 areas.

**Most Creative PSA for 1984**  
*Lightning Safety Tips*, The G-Men, Hugh Garner and Chris Gittins. Friday nights 7 to 9 p.m.

**Best Promotional Cart for an On-Air Program for 1984**  
*The G-Men*, Chris Gittins and Hugh Garner. Friday nights 7 to 9 p.m.

**Most Informative Program**  
*Our Arts*, Carlie Jimenez, Desiree Mays and Marilyn Scharine. Mondays 11:30 a.m. to 12 noon.

**Best Use of the Radio Medium**  
*Desertaire*, Mark Cantor. Last Sunday of each month, 7 to 9 p.m.

**Person or Show Who Has Best Programming to Further Community Awareness**

This category produced a three-way tie; the winners were:  
Elena Gonzales, *La Voz del Pueblo*. Fridays 12:30 to 2 p.m.

Marilyn Scharine, Desiree Mays, Carlie Jimenez, *Our Arts*. Mondays 11:30 a.m. to 12 noon.

Linda Reeder, *Handicapables*. Tuesdays 12 noon to 12:30 p.m.

**Person or Show Who Exhibits the Most Creativity in Programming on a Week-to-Week Basis**

Dave Santavasi and Steve Caras, *Aural Decay*. Wednesdays 7:30 to 9:30 p.m.

**Person or Show Offering Best Mix of Music**  
Ken Meyer, *Audio Gymnastics*. Tuesday afternoons 2 to 4 p.m.

**Most Creative On-Air Personality**  
This category also produced a tie; the winners were:

Chuck Bradley, *Attitude Adjustment Session*. Fridays 9 to 11:30 a.m.

Chris Gittins and Hugh Garner, *The G-Men*. Fridays 7 to 9 p.m.

**Service to KRCL Above and Beyond the Call of Duty**

Lewis Downey, engineer, *Desertaire* live remote, one of four hosts of *Fret 'n Fiddle*, and all-around wonderful person.

**Service as Greatest Contribution in News and Public Affairs**

Sandra McIntyre, *Central America Update*, one-half hour public affairs on Utah peace movement, many short interviews that have been broadcast on *Drive Time Magazine*.

**The Ethnic Program Best Promoting Community Awareness Among a Specific Ethnic Community**

Jim Bilagody, *Living the Circle of Life*. Sundays 7 to 10 a.m.

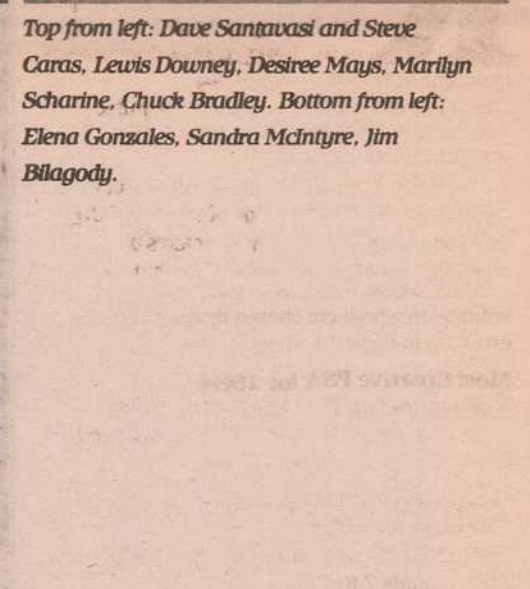
Three other individuals were recognized by the staff at the party for contributions made.

Steve Caras, who will be leaving the station for Washington, D.C., in February (we certainly can't understand why!!!). Steve has been with the station since KRCL's beginning and has not only been an excellent on-air volunteer, but has always been available to help with the many off-air duties that are not as glamorous. We thank you, Steve, and will miss you.

Brian Kelm was recognized by the staff as a trainer *par excellence*. Brian has been the host of *Great Basin Blues* since KRCL's early days and has helped with training new volunteers. This is an extremely important job and Brian mixed humor with creativity to produce some wonderful new volunteers. Thank you, Brian, and tune into *Great Basin Blues*, KRCL fans, for an excellent program by an excellent trainer.

Tim Fredrickson was recognized by the staff as a new volunteer here, but one you never see or hear. Tim has been doing the typesetting, layout and design of the KRCL program guide. All of you who have been with us for a long time know how the program guide has improved in the past few issues. The staff thanks Tim from the bottom of our hearts for his contribution, one that improves the image of KRCL.

And thank you to all the KRCL volunteers for helping us get to five years old. We look forward to the next five years!!!



Top from left: Dave Santavasi and Steve Caras, Lewis Downey, Desiree Mays, Marilyn Scharine, Chuck Bradley. Bottom from left: Elena Gonzales, Sandra McIntyre, Jim Bilagody.



Rod Millar

## Nuclear Wastes in Utah

Continued from page 1

maneuvering. "Each state has evidence," she says, "to prove its environmental assessment is faulty and could be tossed out."

Utah has conducted its own review, with scores of independent contractors, of the site's suitability for nuclear waste disposal. The study, concluded last fall, "indicated that our site is certainly not suitable for site characterization," Hinchman says, largely due to negative effects on Canyonlands National Park, which has received little attention in DOE studies to date.

Concern over Canyonlands has spurred response from many Utahns, including former governor Scott Matheson, who has joined forces with actor Robert Redford and former Utah congressman Wayne Owens to start Utahns for Canyonlands, a non-profit group pledging "total opposition" to further

consideration of the Davis Canyon site. New Utah governor Norman Bangerter has also announced his opposition to the site, citing the "rare natural scenery that is a major source of the livelihood of the citizens of southern Utah."

Opponents of the dump have also questioned assumptions about the safety of storing high-level wastes in geologic formations like the Gibson Dome. Geologists have differed over the risks involved. Can the wastes be contained for the necessary 10,000 to 100,000 years? What is the likelihood that groundwater will leach wastes into the nearby Colorado River? What are "acceptable" risks?

"DOE hasn't done the research to back up their findings of suitability," maintains Deborah Levine of the Don't Waste Utah Campaign. "If they had done their homework, maybe people wouldn't be so

### What Is Site Characterization?

What does it mean when the Department of Energy (DOE) says it may study sites adjacent to Canyonlands National Park for a nuclear waste repository? What will it mean to select a Utah site for further, that is site characterization, studies? Here are some facts about site characterization taken from DOE's own documents:

- Two "exploratory" mine shafts will be constructed: one 22 feet in diameter and 3,140 feet deep; the other 10 feet in diameter and 2,975 feet deep. Nearly a mile of underground tunnels will join the two shafts.
- A 22-story (225 foot) headframe will be erected. A 170 foot high rig will drill the 10 foot shaft.
- Blasting for the 22 foot shaft and tunnels will require 30,000 pounds of blasting powder.
- A seven foot high fence, topped with barbed wire, will surround the 105 acre "exploratory shaft" site.
- Shaft construction will produce 8.7 million gallons of brine to be stored in evaporation ponds. It will also require a seven acre, 10 foot deep mud pit.
- Nearly 10,000 dump truck loads of salt, or 115,000 cubic yards, will be excavated and stored at the site in a fifty foot high pile. 230,000 cubic yards, or almost 20,000 truck loads, or rock will be excavated.
- The necessary 80.7 million gallons of fresh water may be trucked to the site. This translates into 20,175 truckloads (assuming a 4,000 gallon truck), or 19 trucks per day, every day, for three years.
- 18 diesel generators will be needed; many will operate 24 hours a day.
- The project will need its own on-site cement plant to provide the necessary 61,000 cubic yards of cement—equivalent to 6,100 cement trucks.
- At any one time hundreds of vehicles will be at the site including drilling rigs, seismic testing trucks, backhoes, road graders, water trucks, hundreds of light duty vehicles, front loaders, bulldozers, cranes, tractor trailers, dump trucks, diesel and gasoline supply trucks.
- 47 deep (over 1,000 feet) test holes will be drilled along with 740 shallow (less than 1,000 feet) test holes.
- The site will have its own sewage treatment plant, 66,000 square feet (1.5 acres) of floor space in prefabricated buildings, along with 21 house trailers (14 x 60 foot).
- Some seismic surveys will require both drilling hundreds of 25 foot deep holes and packing them with explosives. One seismic line will follow the south side of Canyonlands National Park and two wilderness study areas. Another will parallel the Canyonlands National Park entrance road.
- Contaminated chemicals will be transported to a licensed hazardous waste dump—possibly near Salt Lake City.
- After release of the environmental assessments, and as part of site characterization studies, DOE will begin to collect baseline data from 200 foot high air quality monitoring towers. They will also initiate studies of flora, fauna, endangered species, transportation and socio-economic impacts.

Reprinted from the *Utah Nuclear Waste Repository News*.

skeptical."

Other questions about the repository concern such varied topics as the impact of testing on the Canyonlands area, the hazards of transportation of wastes to the site, the need for large quantities of water, and the impact on employment in southeastern Utah.

There has also been widespread criticism of DOE's management of the selection program, which was put into motion by the passage of the Nuclear Waste Policy Act of 1982, in response to nuclear industry concerns that a permanent solution be found to the problem of rapidly accumulating spent fuel.

According to Hinchman, DOE has not provided adequate opportunities for state response and citizen input. Instead of consultation meetings, she says, members of Utah's Nuclear Waste Policy Group have been frustrated by DOE's sponsored "dog-and-

pony shows," where the department has presented only "sketchy" information with little chance for public response. "It's not much of a program," says Hinchman. "We think it's a mistake and should be disbanded."

The DOE has scheduled a hearing in Salt Lake City on the draft environmental assessments for February 22nd from 2 to 9 p.m. at the Hotel Utah. Speakers must reserve time slots by calling (614) 424-4235. To assist citizens in the cumbersome hearings process, DOE held briefings in late January, and Don't Waste Utah is sponsoring a workshop on February 16th from 1 to 4 p.m. at the First Unitarian Church. Public comment will be accepted only through March 20, after which new Energy Secretary-designate John Herrington will make final recommendation of three sites to the president.

## Hearing Schedule

**Salt Lake City—Friday, February 22nd from 2 to 9 p.m. at the Westin Hotel Utah.**

**Moab—Wednesday, February 20th from 4 to 9 p.m. at Helen M. Knight High School.**

**Monticello—Tuesday, February 19th from 4 to 9 p.m. at Monticello High School.**

KRCL listeners have been alerted to possible safety and environmental problems with the Davis Canyon site through the regular Nuclear Waste Reports produced by Don't Waste Utah. Also, recent updates by the Sierra Club and the Utah Wilderness Association have focused on environmental concerns with the repository.

According to station manager John Greene, these groups have done a good job getting information out to the public, while building coalitions of interested persons opposed to the siting of nuclear wastes in Utah.

"The station has been fairly thorough in its coverage of a wide range of topics relating to the nuclear industry as a whole," Greene said. In the past year KRCL has run half-hour programs dealing with cost overruns in the construction of nuclear power plants, the degree of risk to those exposed to low level

radiation for extended periods of time, the enormous costs resulting from nuclear accidents such as Three Mile Island, and many more.

"The DOE's draft environmental assessment is terribly complex to the average person. We now feel that Utah's residents are being lulled to sleep on the issue of a dump site eventually being located in Utah," Greene said. "We've made a decision to keep a sharp focus on this issue, and to augment the information produced by advocacy groups with interviews of state officials who are wrestling with this issue," he added.

So we're off the hook, right? Many do not think so. Stay tuned to KRCL and made up your own mind.