

KRCL**Q1FM**

Salt Lake City, Utah

Brown Bag Schedule

The Brown Bag Series will be simulcast on KRCL-live during the first three weeks of June.

ZCMI Center (So. Temple Plaza)

Mon. June 3rd	Fowler Brothers Airpocket
Tues. 4th	Jensen/Woodbury (Classical Guitar)
Wed. 5th	Oquirrh Ridge Drifters (Bluegrass)
Thur. 6th	Salt Lake Goodtime Jazz Band (Dixieland)
Fri. 7th	Rama Nueva (Sounds of the Andes)

Exchange Place Plaza

Mon. 10th	Joe Muscolino Quintet (Jazz)
Tues. 11th	Intermountain Brass Quintet (Classical)
Wed. 12th	Tenpenny (Irish)
Thur. 13th	Wolkiing/Bullen
Fri. 14th	Faith Temple Pentecostal Choir (Gospel)

Sheraton Hotel (east plaza)

Mon. 17th	The Saliva Sisters (Nostalgia & Musical Comedy)
Tues. 18th	Gayle Smith (Classical-Cello)
Wed. 19th	The Bunkhouse Orchestra (Music of the Pioneering West)
Thur. 20th	Larry Jackstien (Jazz)
Fri. 21st	The Bel Airs (Rock)

American Towers Plaza

Mon. 24th	Amnesia (Jazz)
Tues. 25th	Maggie Beers (Contemporary)

The Brown Bag Series continues after the Arts Festival in July.

208 West 800 South, Salt Lake City, Utah 84101
Phone (801) 363-1818

Non-Profit Organization
U.S. Postage
PAID
Salt Lake City, Utah
Permit Number 3973

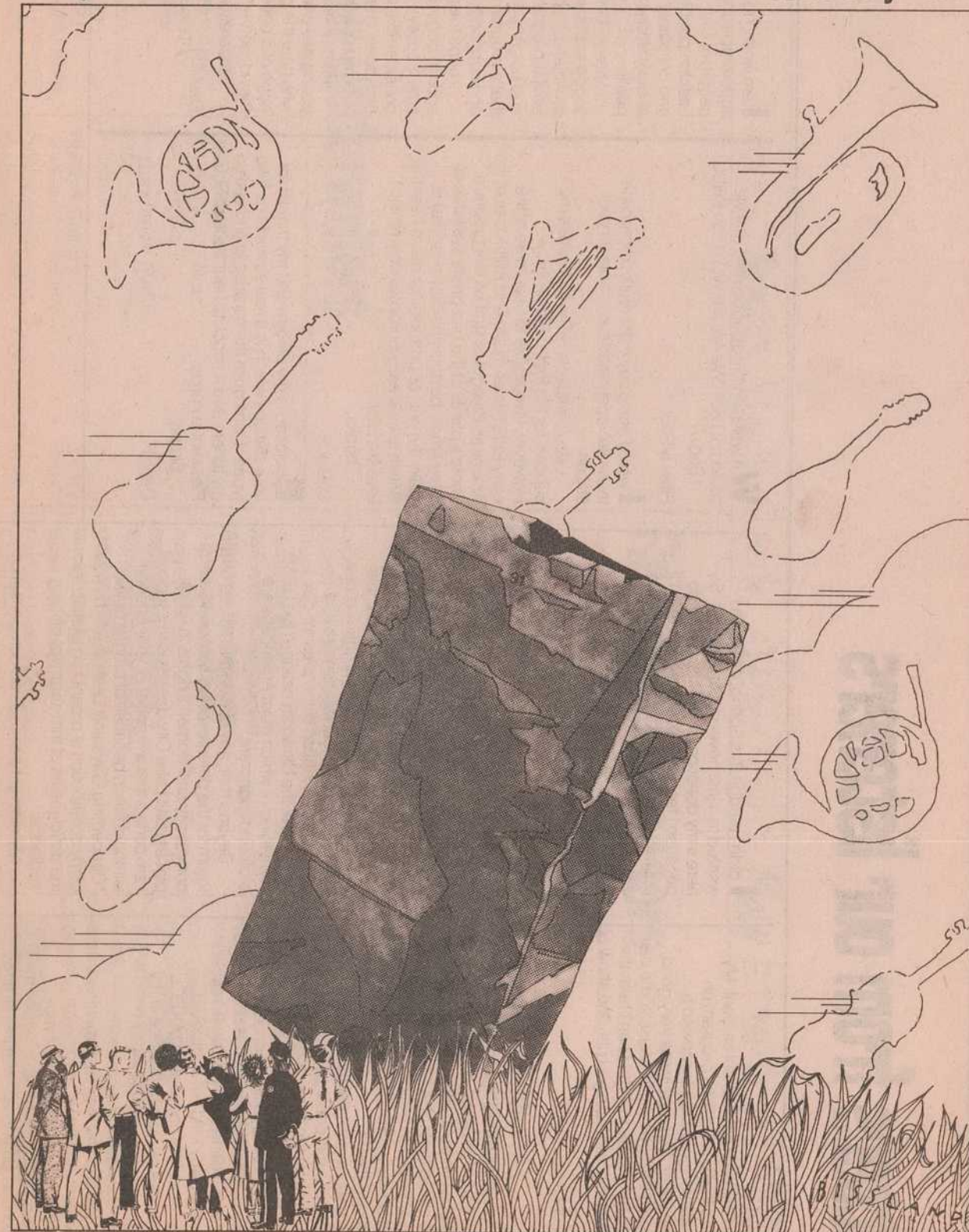
Please notify us of any change of name or address.
The post office will not forward program guides.

KRCL**Q1FM**

Salt Lake City, Utah

Program Guide

June-July 1985



A Notable Brown Bag

A Notable Brown Bag

by Kath Lee

Editor's Note: KRCL will simulcast the Brown Bag Series for three weeks and two days in June (see back cover for schedule). After the Arts Festival the Brown Bag Series will continue through July and August sans KRCL. Enjoy.



The Saliva Sisters, (Nostalgia and Musical Comedy), Bila Ann (Kirsten Merrill), Adema (Rebecca Terry), and Vadeen (Michelle Nunley).

Maybe some of you have noticed that Salt Lake does not dish out the usual plethora of oddball street artists with violin or guitar cases open to catch quarters so they can put gas in the station wagon they live out of and buy cups of coffee sitting around discussing the upcoming Grateful Dead 20th Anniversary concerts; or maybe they go catch a chess game after a day of playing to mostly oblivious crowds from the niche in front of the bank on the corner where a lot of people are sure to catch a few well turned tunes and drop some metal into their laps. No, Salt Lake is not regaled by homemade musicians, or comedians, or mimes that collect like cigarette butts in the corners of buildings and the streets of Salt Lake City. Instead, the clean streets and beautiful little parks and plazas of SLC will be blessed this summer by a variety of musical and artistic performances, the Series has brought to office workers, shoppers, street folk and tourists a good healthy taste of Utah's finest artistic talents — free of charge.

The idea of Brown Bags sprouted some 45 or so years ago during WWII in London. The British government sought to keep morale up while doing a little cultural enriching and keeping artists in practice during the frequent long bombing raids Londoners weathered. Everyone would head for the Underground with Brown Bag meal in hand. Once down amidst the entanglements of the Tube, there would be a variety of entertainment provided by London's finest musicians, dancers, and actors. In some larger stations a full symphony would perform.

The Salt Lake Arts Council has administered the series from its beginnings eight years ago. Casey Jarman is in his second year as chief fundraiser and coordinator. The Salt Lake Arts Council is concerned with providing work and exposure for local performing artists. Emphasis is placed on professionalism which will hopefully benefit both the artists and the audiences. To this end, Jarman and his co-workers have paid close attention to details such as good sound, uniform pay,

and a comfortable working atmosphere. It is especially creditable to the series that the artists are paid, at least minimum wages. Where such series exist in other cities often the artists perform without any monetary compensation.

This year the series will have an additional boost. KRCL will broadcast live the first 3 weeks in June. The idea springs from the creative brain of KRCL's engineer, Louis Downey. Downey quite clearly has a love and fascination for all things connected with radio; and live broadcasting is one of his favorites. He says that live broadcasting is an adrenalin rush for him. One of the goals is to foster the work of local artists and musicians in the community. KRCL's Downey is clear about these goals: "Over the years our dedication to community coverage has sent us roaming into many uncommon arenas appropriate for radio. We have built-in flexibility and we have developed the skills and expertise to do live-air broadcasts. Still, it's not all that simple; the regular program schedule will be interrupted, and KRCL will be putting considerable time and effort into the live broadcast. And we're glad to be doing it."

"Well, it gets us out of the trailer court. And, of course, we get to work on our tans a little, and its a free lunch if people share their sandwiches with us."

Without fail every person expressed excitement at the idea of live broadcasting the series. There is a certain oldtime charm about live broadcasts. As Dave Wilkins of the Musicians Union says, "It brings back memories of my childhood and live shows on the old radio stations — and it hasn't been done for so many years." Charm aside, live broadcasting for KRCL is a challenge to do more than resurrect an old art form. High technology and recording sophistication has made music more technically sound, but also more remote. Immediacy and freshness is often missing — that feeling that comes with perhaps not perfect sound transmission but with the humanness of being there.

At the same time the live broadcasts might be a technically advantageous addition for some performances. And in spite of KRCL's less than state-of-the-art equipment some acoustical difficulties may be eliminated. Problems such as wind, bad weather, sirens and the like.

continued on page 3

Report to the listener

I closed my April-May Report to the listener with an exhortation to KRCL listeners to "come on down", donate to our Spring Radiothon, and walk away with one of our brand new Fifth Year Anniversary T-Shirts! Over two thousand of you did just that. Not everyone got an Anniversary T-Shirt, but thanks to a multitude of local businesses, most donors received something in addition to the satisfaction of keeping Radio Free Utah on the air.

Our goal was to raise \$47,000 in pledges, our highest goal ever! Thanks to you we exceeded this mark by several hundred dollars. Our sincere thanks for once again proving that there is indeed a need for alternative radio along the Wasatch Front.

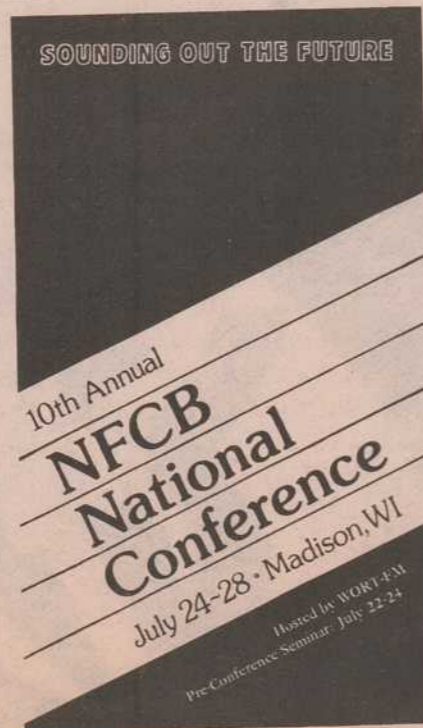
Radiothon was an extremely busy time for us. Simultaneous to the nine and one-half days of on-air fundraising, KRCL was experiencing its first full fledged audit, and we were putting the final touches to our application for Corporation for Public Broadcasting support. Our audit produced no significant irregularities of any kind for the years 1983 and 1984, and our application to CPB has been sent to Washington D.C. for approval. We would like to thank the accounting firm of Deloitte, Haskins and Sells for the great job they performed for us. Full disclosure of KRCL's 1984 financial statement will appear in the August-September issue of the Program Guide. As with any publicly held corporation, KRCL's "public file" is open to inspection. This file contains station documents. Should you desire access to this file, please contact station staff to arrange a time.

I wish I could be more diffinitive regarding our CPB application. Notification from CPB to applicant stations has not yet occurred, and in all probability will not occur until mid summer. You'll know as soon as we know.

... public stations stand as tangible proof that communities do indeed cherish media resources that are accessible and responsive to listeners.

In addition to marking KRCL's fifth anniversary, this summer is a very special year in the history of community radio nationally. Ten years ago this summer a group of dedicated individuals collected in Madison, Wisconsin to discuss ways in which communities across the country might gain access to the media by becoming media themselves. Ten years later seventy community based stations and another one hundred affiliated public stations stand as tangible proof that communities do indeed cherish media resources that are accessible and responsive to listeners. The theme for this commemorative conference is "Sounding Out the Future". Several KRCL staff members plan to attend this gathering to share our experiences and gather new energy and ideas from those who do what we do, make radio.

We hope that by now more of you are becoming familiar with the may changes made to our afternoon program schedule. We encourage you to check out: Cambridge Forum, Reggae Beat, Sojourns, New Dimensions, Totally Wired, Daydreams, Musica Latina, La Voz do la Gente, and Latin Connection. Please check our program schedule for day and time of these programs.



Now, having just called your attention to nine new programs, I'll mention that our live broadcasts of the Salt Lake Council for the Arts' Brown Bag music series, will air from 12:15 p.m. to 1:00 p.m. Monday through Friday starting June 3rd and ending June 21st. Some of the programs just listed will return to normal on June 22nd. If you can't be in attendance at these daily luncheon concerts held at a variety of work sites around Salt Lake, tune your dial to 91 FM and enjoy!

And finally, a special thanks goes out to Babs Delay, Chuck Bradley, Ewell Madry, and Mary Aguilar, KRCL's soul programming contingent, for organizing and staging a "Get Outta School" dance at the Central City Community Center. Pressure is already being felt to make this a regular occurrence of some sort. Maybe a video can be shot of "Get Outta School II".

Sincerely

John Greene
Station Manager



Advertise in the Program Guide

Behind the Sounds

Board of Trustees

Chair
Gerald Kinghorn

Vice-Chair
Gail Della Piana

Board Members
Larry Ficks, Bob Flores, Maria Garcia, Barb Guy, Steve Holbrook, Jon Lear, Howard Lundgren, Genaro Padilla, Tim Rice, Bruce Roberts, Paul Wharton, Maggie Wilde, Kathy Wilson

Staff

Station Manager
John Greene

Operations Manager
Donna Land Maldonado

Office Manager
Maggie Laun

Development Director
Lynne Van Dam

KRCL Volunteers

Cindy Adams, Gary Allen, Mike Anderson, Mary Aguilar, Robert M. Archuleta, Natalie Atherton, George Alex, Ed Bagley, Deena Brazy, Bob Bedore, Dan Benaducci, Jim Biliagody, Tom Blackwood, Karen Bowers, Dave Bowyer, Chuck Bradley, Jon Bray, Brent Burdette, Mark Cantor, Dale Carlson, Brad Charon, Brad Collins, Omel Contreras, Babs De Lay, Percy Devine, Marvin Dixon, Lewis Downey, Bernice Egi, Jim Elder, Myron Fairbanks, Victor Fernandez, Larry Ficks, Bob Finner, Matt Flinner, Rex Flinner, Doc Floor, Mack Gift, Nick Gioello, Eric Gisher, Chris Gittens, Elena Gonzales, Juan Gonzales, Frank Goodbold, Barb Guy, John Halaliku, Jimmy Hamamoto, Carol Huey, Stan Holmes, Carlie Jimenez, Dave Iverson, Mark Jackman, Dave Jacobs, Mike Katsan, Brian Keim, Erik Kingston, Joel Knuth, Bill Komlos, Andy Langton, Ray Larsen, Leo Leckie, Jeannie Lesh, Debra Levine, Stephanie Lokier, Julie Lueders, Lisa Mace, Rona MacKenzie, Ewell Madry, Mladen Maric, Dan Maryon, Desiree Mays, Sandra McIntyre, Mary Menconi, Ken Meyer, Craig Miller, Annina Mitchell, Samboon Mongkolsombat, Jeffrey Montague, Maureen Mooney, Becky Moss, Robert Moss, Kevin Murphy, Hang Nguyen, Thom Odom, Roland Pearson, Terinell Pelley, Harry Plitz, Vicki Pugmire, Dean Petaja, Steve Rasmussen, Linda Reeder, Nini Rich, George Ricker, Bruce Saffran, Dave Santivasi, Joe Sargent, Marilyn Scharine, Richard Scharine, John Schellinger, Michael Schmidt, Jerry Schmidt, Ellen Selu, Wayne Selu, Kurt Setzer, Jim Sewell, Lisa Sewell, Perry Shepard, John Shilaos, Butch Shumway, Gary Smith, David Spencer, Shirley Stevens, Rick Summers, Evy Tessman, Christie Thorp, Pete Tinker, Andy Trauba, Raul Truex, Joel Ulijakola, Robert Velasquez, Dana Wanders, Ron Ward, Doug Watts, Terry Tempest Williams, Darrell Young, Dolly Young, Greg Young

Program Guide Staff

Editor
Lynne Van Dam

Production and Design
Tim Fredrickson and Ken Myer

Typesetting
Eric Cole, Angie Abram — Quickset Typesetting

Contributing Writers
Tom Blackwood, John Greene, Kath Lee, Donna Land Maldonado, Lynne Van Dam

Contributing Artists
Bob Bissland (on the cover)

Contributing Photographers
Tom Blackwood, Mark Jackman, Jerry Schmidt, Lynne Van Dam

Circulation
Maggie Laun

Brown Bag continued from page 1

KRCL is collaborating with the Salt Lake Arts Council in bringing the Brown Bag Series to wider audiences. The Salt Lake Arts Council has given the station a small grant which will defray some of the operating costs for the live broadcast of the series. Mountain Bell has provided the use of telephone lines for transmitting the music from the site to the station. Downey says that KRCL probably shouldn't even attempt such a project without a major monetary sponsor. But the station is accustomed to venturing into the unknown with little money and such escapades have usually proven to have happy endings.

The Salt Lake Arts Council does the fundraising for the series. This involves finding both site sponsors, and general sponsors, who might be interested in the arts and dedicated to enriching the art community, or interested in keeping Salt Lake City a vital and progressive city. Debbie Reverman at Crossroads Plaza, a site sponsor, likes the idea of bringing the arts into a popular public place where people of all types have a chance to listen and watch. She says, "The art community in Salt Lake City is one of the most diverse and talented I have ever lived amongst and the unique and diversified entertainment that the Brown Bag Series brings is really an asset." Kyle Stubbs at Coca Cola, a general sponsor, thinks the series is valuable because it involves a cross-section of people and breaks up the routine of everyday life. Coca Cola likes to stay involved in the community. In return for their support, sponsors receive advertising and a tax deduction.

Some money is supplied by the Central Business Improvement District. This organization was set up 4 years ago to keep the downtown "a fun, attractive and accessible part of the City." Jess Agraz, the man who started the nine member board says the series brings a lot of activity and life to the downtown area. Dave Wilkins, Secretary of the Musicians Union and, separately, administrator of the Music Performance Trust Fund also provides some money in applicable cases from the Fund, as well as supplying a good directory of local talent through the Union. Both Union and non-Union members participate in the series. The arts in Utah flourish in large part due to the hard work and efforts of people who continually raise funds and search for viable forums to allow Utah artists to show their stuff and eat and pay rent at the same time. Susan Boskoff of the Utah Arts Council, says, "There's a lot of exceptional talent in



So it's lunchtime, and it's pretty hot, ... and your necktie is a little tight and your nylons are starting to sparkle wit the sweat building up underneath, but my-heavens-to-betsy that's good music.

The Bunkhouse Orchestra (Music of the Pioneering West)



Jenson/Woodbury (Classical Guitar), Milton Jenson and Todd Woodbury.

SLC. There is also a good understanding and supportive base for different forms of art here. But it can be a little difficult to fund and promote new and more unusual kinds of art and performances.

So it's lunchtime, and it's pretty hot, and the wasps are dive bombing your tuna sandwich, and your necktie is a little tight and your nylons are starting to sparkle with the sweat building up underneath, but, my-heavens-to-betsy that's good music. Yessiree Bob. Either a refreshing break from work, or a well needed break from some strenuous shopping or a relief from the boredom of a long day with empty hours to somehow fill, a lunchtime concert or dance performance comes like a juicy bit of roadkill to a hungry vulture, a homerun to some poor chap with an average of .50, or Joanna Carson's alimony check in your mailbox.

Adema, one of the three famed Saliva Sisters, who trundle out an outrageous and entertaining display of nostalgia and musical comedy chorlines, "Well, it gets us out of our trailer court. And of course we get to work on our tans a little, and it's a free lunch if people share their sandwiches with us. And then it's one more chance to practice and get it right." The Salivas really enjoy doing the series — the crowds are very warm and appreciative. Tom Stetich of the Oquirrh Ridgedrillers, a local bluegrass band, likes playing in the casual, low pressure atmosphere of the outdoor concerts. Kirsten Merrill, a Saliva Sister and a member of the Bel Airs, a local rock band, likes tapping into the spontaneity of people at lunchtime — out to catch some tunes on the breeze. Todd Woodbury of the Jenson/Woodbury duo likes playing to the

continued on page 12

ADVENTURE RENTAL SYSTEMS INC.



FEATURING The New Action Attraction Searider

- River Rafts
- Sail Boards
- Camping
- Hiking
- Canoes
- Mountain Bikes
- Picnic Packages
- Kayaks
- Jet Ski's
- Tent Trailers

486-3609
3161 Highland Dr
Salt Lake City
Utah 84106



Cosmic Aeroplane still buys and sells used books and records. We pay top dollar for entire collections, sets and individual items. Please call or stop by if we can be of service to you.

Cosmic Aeroplane Books & Records
(801) 533-9409
258 East 100 South
Salt Lake City, Utah 84111

the Salt Lake Roasting Co. & Cafe
400 South 249 East
Salt Lake City, Utah 84111
363-7372

PERFORMANCE AUDIO
2398 So. Main Salt Lake City, Utah 84115
801-355-8890

Phillips Gallery
444 East 200 South
Salt Lake City, Utah 84111
801-364-8284

KRCL public affairs schedule

Local entertainment - live, by remote. For the first three weeks in June, Monday through Friday, from 12:00 noon to 1:00 p.m., KRCL will crackle with the musical sounds of the Brown Bag series. (see article for details). During these three weeks, all the programs regularly aired during this time slot will take a vacation ... to return the week of June 24th.

In last month's Program Guide we announced that the Global Town Meeting would start broadcasting on a monthly basis. Well, due to financial difficulties, this venture has had to be put on hold. U.S. Radio is hoping to raise the funds by this fall, we'll keep you informed.

Big turn-over in the late night/early morning slots ... see the center for all the changes. Yes, it's part of KRCL's charm to be a bit mysterious about who's on when and who is sitting in for whom. Boring we're not, a little dry at times, but never boring.

Summer always means festivals and more festivals ... stay tuned to KRCL for the latest ... we'll keep you as informed as we are!! Double meaning. We'll keep you informed if you keep us informed. Coming up in June: A Hispanic Festival and Arts Festival; in July: the Obon's and Native American and Western festivals, and the environmental people are bound to have some doings. Can't complain that there's nothing to do! Anyway, we'll probably see you at at least one of the 'doings' we know KRCL listeners are active in community events and affairs; we know 'cause those KRCL t-shirts just keep popping up!!

SUNDAY

First Person Radio

8 a.m.
News, information and perspectives of Native Americans as seen by Native Americans

New Dimensions

9 p.m.
June 2: "Country Business," with David Hoffman.
June 9: "Yogafire," with B.K.S. Iyengar.
June 16: "Self-Knowledge," with Nathaniel Branden.
June 23: "Tales of Tibet," with John Avedon.
June 30: "Recreating Person Reality," with Paul and Sylvie Crockett.
July 7: "Beyond Power," with Andrew Bard Schmoekler.
July 14: "Awakening to Change," with Walter Truett Anderson.
July 21: "Zen Ethics," with Robert Aitken Roshi.
July 28: "Loving Relationship: The Road to Immortality," with Leo Buscaglia.

Music from "The Hearts of Space"

10 p.m.
This show combines the best of the new electronic and electro-acoustic spacemusic. It is brought together into lyrical, evocative journeys with minimal commentary.

MONDAY

Morning Light

8:30 a.m.
"Consider The Alternatives," a SANE production on alternative notions of today's global concerns.

Our Art

11:30 a.m.
Interviews with local or visiting artists produced by hosts Desiree Mays, Carlie Jimenez or Marilyn Scharine.

June 3: Carlie Jimenez talks with artist Meredith Mensch.
June 10: Carlie talks with Mary Francey.
June 17: The Contemporary Arts Society.
June 24: Lawrence Becker converses with Desiree Mays.
July 1: The Writers Workshop.
July 8: The McCormicks and a new book about Saltair.
July 15: Studying Petroglyphs.
July 22: Folk Musician J.C. Burris.
July 29: Folk Musician J.C. Burris.

Concerning Gays

12 noon
A program to help educate the public on a different lifestyle. Hosts: Mickey & Dean.

Cambridge Forum

12:30 p.m.
A public affairs series that focuses not on the passing headlines but on the more permanent problems, the news behind the news.

P.A. 91

7 p.m.
"Conversations from Wingspread," a free exchange of ideas, produced by the Johnson Foundation.

"Priorities" will air the 1st Monday of each month.

June 3: "Closing the Loopholes: Is the tax system fair?"
July 1: "America's Children - A Forgotten Generation?"

TUESDAY

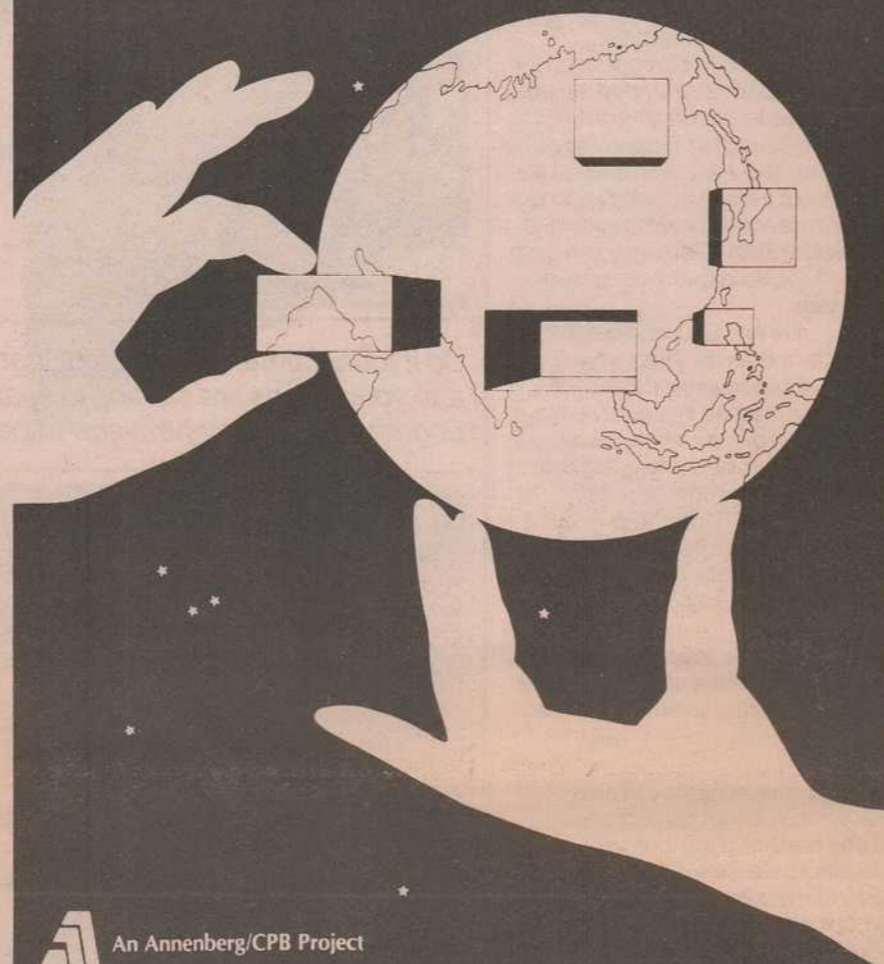
Morning Light

8:30 a.m.
"First Person Radio," news, information and perspectives about and by Native Americans. A Migizi Communications production.

Community Notes

11:30 a.m.
June 4: Museum Notes, with host Terry Tempest Williams from the Museum of Natural History.
June 11: Working Together, with hosts Shirley Stevens and Karen Bower.
June 18: Gary Totland with Community Concerns
June 25: Utah Legal Services with host Tineke Van Dyke.
July 2: Museum notes.
July 16: Working Together.
July 23: Utah Legal Services.
July 30: To Be Announced.

The Challenge of China and Japan



An Annenberg/CPB Project

Rearming the Shogun State

"Many Japanese people were so thoroughly baptized into pacifism after the end of the war ... and resorting to military means in this day and age of nuclear weaponry was an absurd proposition and that was the feeling that was shared by the majority of the Japanese people."

Masao Kunihiro,
Professor of Cultural
Anthropology at Sophia University

Contemporary Western Europe

Tune in to
Morning Light
Thursdays, 8:30 a.m.

Please Support
Our Underwriters

Handicapables

12 noon
Join host Linda Reeder as she interviews those who are or work with the "handicapped."

Enfoque Nacional

7 p.m.
A Spanish national news program en Espanol. A Western Community Bilingual Radio and Radio Bilingual production.

P.A. 91

7 p.m.
"Latter Days Radio," with Scott Carrier. Sound stories by audio artists from around the country.

WEDNESDAY

Morning Light

8:30 a.m.
"Common Ground," views from a humanistic perspective. A Stanley Foundation production.

Senior Sound Off

From the Division of Aging: Percy Devine, Marge Drury and Dolly Young rotate in addressing issues and question on the golden years of life.

Fairmenist Revolution

12 noon
Host Mac Gift explores the consciousness toward humanism, the letting go of stifling habits and attitudes.

P.A. 91

7 p.m.
"Consider the Alternatives," alternative notions of today's global concerns (repeat of Monday's Morning Light).

THURSDAY

Morning Light

8:30 a.m.
"The Challenge of China and Japan" is a 15-part series dealing with the concepts of changes and choices of life in China and Japan. This series explores the cultural, historical and philosophical roots of Chinese and Japanese political systems. Beginning on July 18th, the series "Contemporary Western Europe" begins. (See article in this program guide).



(801) 261-4555
206 East 6400 South • Murray, Utah 84107



650 East 800 South • SLC 303-2071

Lunch Encounter

11:30 a.m.
June 6: "Poems to a Listener," Czeslaw Milosz
June 13: "Poems to a Listener," Margaret Gibson
June 20: "Thinking Out Loud" - Learning From the Land: Young voices from the Navajo Nation, produced by Jeffrey Montague.
June 27: "Poems to a Listener," Robert Francis.
July 4: "4th of July Special."
July 11: "Land Rights: The Mayans & the Guatemalan Military," the plight of the Mayan Indians in Guatemala. NCFB.
July 18: "Thinking Out Loud," Haunting the 'Globe', having some fun in Shakespeare's time.
July 25: "Pesticides," local producer Mary Menconi examines the use and abuse of pesticides.

Lunch Encounter

12 noon
June : The Brown Bag Series
July 4: "Alaska and The Pacific Rim," part I: Alaska & the Pacific.
July 11: "Part II: Alaska and Pacific North America - impact of the natural resources.
July 18: "Part III: Alaska & Hawaii - technology and economics vs. the cultures.
June 25: "Part IV: Alaska & Japan - a new union of Oriental & Western Cultures.

New Dimensions Radio

12:30 p.m.
A repeat of Sunday's schedule. Due to the scheduled live remotes of the Brown Bag Series, New Dimensions Radio will begin at 1:00 p.m. for the month of June so that it can run in its entirety. During the month of July, New Dimensions will return to its regularly scheduled time.

Totally Wired

1:30 p.m.
"Totally Wired," presents artists in electronic sound as they explore the musical development of the global village. A John DiLiberto and Kimberly Haas production.
June : "The Brown Bag Series will pre-empt Totally Wired for the month of June.
July 4: "Another Look at Computer Synthesis."
July 11: "The Synthipop Tradition Kraftwerk & Depeche Mode."
July 18: "Synthesists for Hire."
July 25: "Electronic Dreams" Part I.

P.A. 91

7 p.m.
June 6: "Thinking Out Loud," - Learning from the Land: Young voices from the Navajo Nation. Produced by Jeffrey Montague.
June 13: "Pesticides," local producer Mary Menconi examines the use and abuse of pesticides.
June 20: "Peace Detectives," Part I - a documentary collage that explores some positive, non-partisan responses to peace.
June 27: "Peace Detectives," Part II
July 4: "Thinking Out Loud," - Haunting the 'Globe': Having Some Fun in Shakespeare's Time.

July 11: "Worker Cooperatives: An Alternative in Free Enterprise," Part I, a look at Milwaukee, Wisconsin where the poor and the working class people are starting their own businesses.
July 18: "Part II, two cooperatives in North Carolina, a state with the lowest union membership in the nation.
July 25: "Part III, a question of union involvement.

FRIDAY

Morning Light

8:30 a.m.
"In Black America," views and insights of today's society through the eyes of black America.

Lunch Encounter

11:30 a.m.
June 28: "The Herpes-Media Blitz" 1 hour special.

Local issues throughout the rest of the month.

12 noon

June 28: "The Herpes-Media Blitz" special continues.
July 12: "Utah Issues with Bill Walsh. Local issues throughout the rest of the month



(801) 328-1381



375 South West Temple
801-534-1617

Thinking Out Loud

THE UTAH HUMANITIES RADIO PROJECT



Photo by Bruce Hucko

Learning From the Land:
Young Voices From the Navajo Nation
Thursday, June 6 at 7 pm
and
Thursday, June 20 at 11:30 am

and
Haunting the Globe:
Having Some Fun in Shakespeare's Time
Thursday, July 4 at 7 pm
and
Thursday, July 18 at 11:30 am

From Southeast Asia to Punk

by Tom Blackwood

Editor's Note: Unfortunately, we were unable to obtain a photo of Samboom Mongkolombat before going to press and Vic Fernandez was unavailable for an interview for this story.

From the delicate understated sparseness of classical Thai music to the fever pitch stridency of hard core punk, Saturday's musical range is the epitome of the diversity that characterizes KRCL as a whole. Echoing the dissimilarities of Saturday's music, the hodgepodge collection of volunteers return weekly like homing pigeons to programs they've imbued with their own individual mixtures of philosophy, perseverance and perspiration. They put the finishing touch on KRCL's wonderful but wacky week with their private blend of spice, color and tenacity.

Starting at 7 a.m. with the Thai segment of Asian Chimes, the day progresses across the world, through the musical ideas and ideals of the 1960's and down into the reggae scene of Jamaica. Returning northward, KRCL then explores the roots of rockabilly on American music, takes in the progress of today's music, both popular and avante-garde, and finally drives the whole day home—hard—with five hours of maximum punk music on Behind The Zion Curtain. If the station itself is the foundation of this diverse day, it is the creativity and dedication of our Saturday programmers that lend it structure.

It is this dedication which led to the creation of the Asian Chimes program between 7 and 10 a.m. on Saturday mornings. Asian Chimes is the combined effort of volunteers Samboom Mongkolombat, Darrell Young, Hang Nguyen, Thank Nguyen, Dung Hoang and Vic Fernandez, and serves as a source of information and music for the local communities from Thailand, China, Viet Nam and the Philippines. These communities represent a growing segment of Utah's population. There are an estimated 10,000 Southeast Asians living in Utah, 75 percent of whom live in the Salt Lake area.

Samboom Mongkolombat blends modern Thai music with the classical sounds of ancient string and bamboo instruments. "Most of my listeners are young people from Thailand and Laos. Their musical preferences run more to modern music," he said. But he likes to keep them involved with their musical heritage and culture: "Our early music is a cross between Indian and Chinese." The haunting sounds are replete with the rich tapestry of oriental religion and history. For Samboom, who is hard at work of an MBA at Brigham Young University and simultaneously toils 9 to 5 at American Express, his portion of Asian Chimes is a way to inspire and maintain the vital network of communications within the Thai and Laotian community.

Darrell Young, who programs the Chinese Music portion of Asian Chimes, found his way to KRCL at the suggestion of friends. As a former DJ in Evanston, Wyoming, he wanted to continue his ties with radio. One and a half years at KRCL has also served to form ties with the local Chinese people. "I get a very good response from the Chinese community ... and also from the American community. The music itself attracts a following." In addition to news concerning the Chinese community, Darrell's music includes the contemporary Chinese scene as well as focusing on the traditional musical themes revolving around the changing of seasons, nature and love.

Bridging the gap of information between the English speaking and Asian communities is another important goal of Asian Chimes, according to Hang Nguyen, who programs the Vietnamese portion of the show. She translates important news from the

... the hodgepodge collection of volunteers return weekly like homing pigeons to programs they've imbued with their own mixtures of philosophy, perseverance and perspiration.

American papers that the Vietnamese community would otherwise not receive." Recently we've been doing a story each week centering on important medical news such as the artificial heart developments," Hang says. "We also provide important information concerning various childhood immunization services available for tuberculosis and other diseases." Hang, who speaks five languages, spends time each week gathering and translating information for these features.

Co-programmer Thanh Nguyen explains the importance of these services to the Asian community: "The Vietnamese community is spread out over the city; the news and music helps to unite them. Many people have trouble adjusting to the different culture in the U.S. and Asian Chimes helps the community to retain images of home while also keeping our traditions and values alive in our children."

Following Asian Chimes at 10 a.m. is Saturday Sagebrush Serenade, a long running show on KRCL that features the music of the 1960's. Undoubtedly one of our most popular shows, Sagebrush has been through many changes and each new programmer has added new ideas to the previous format. Dale Carlson, the current Sagebrush host, began his career at KRCL by inheriting the Tentacles program on Sunday night. From Ken Rudd, who was leaving the station. He knew Dale would continue to support and play avante-garde music.

After 16 months on Tentacles, Dale landed the Sagebrush slot when long time host Greg Morris left the station for greener Florida pastures. While Dale had mixed feelings about giving up Tentacles, he finally opted for the Sagebrush slot. "I wanted to expand the types of music I could play on the air. I can play any genre of music provided it fits within the chronological limits of the program. Also, the four hour time slot was appealing because of the increased programming creativity it offered." Dale is a musician who has been playing professionally in Salt Lake City since 1974. A Sagebrush philosophy? "I like to try and get a mix between music that's very familiar to people, all the way to music that is very familiar. I try to judge everything on its own merits." Salt Lake is fortunate; Dale's been buying albums on their own merits for twenty years and has stored away a regular stockpile of music including many rare or out of print albums from the 60's.

At 2 p.m. Dale turns the control booth over to Myron Fairbanks, bringing in three hours of reggae music with Smile Jamaica. Myron "slid in the back door" at KRCL to replace Brooke Edmund's. Although Myron enjoys the rock and roll of the 60's and 70's, he enjoys playing reggae "because it's such a universal type of music that can touch

people from all walks of life. I feel like it has a purpose and it's something that people need to hear. If it wasn't for KRCL there wouldn't be reggae music happening in Salt Lake except what is occasionally slipped in on other stations." Myron tries to look at the roots side of reggae on his show, but he also takes in the newer commercial aspects of the genre. Of the reggae scene in Salt Lake, he says, "There's not a lot of Rastafarian culture of reggae culture, but it does exist, and it's getting bigger all the time." Growth is no doubt due to Myron's multiple gifts every Saturday.

Of Violet, Bob says, "I can be pretty scattered and Violet's organization is a big help." Together, they put out a diverse and informative program on the American music scene.

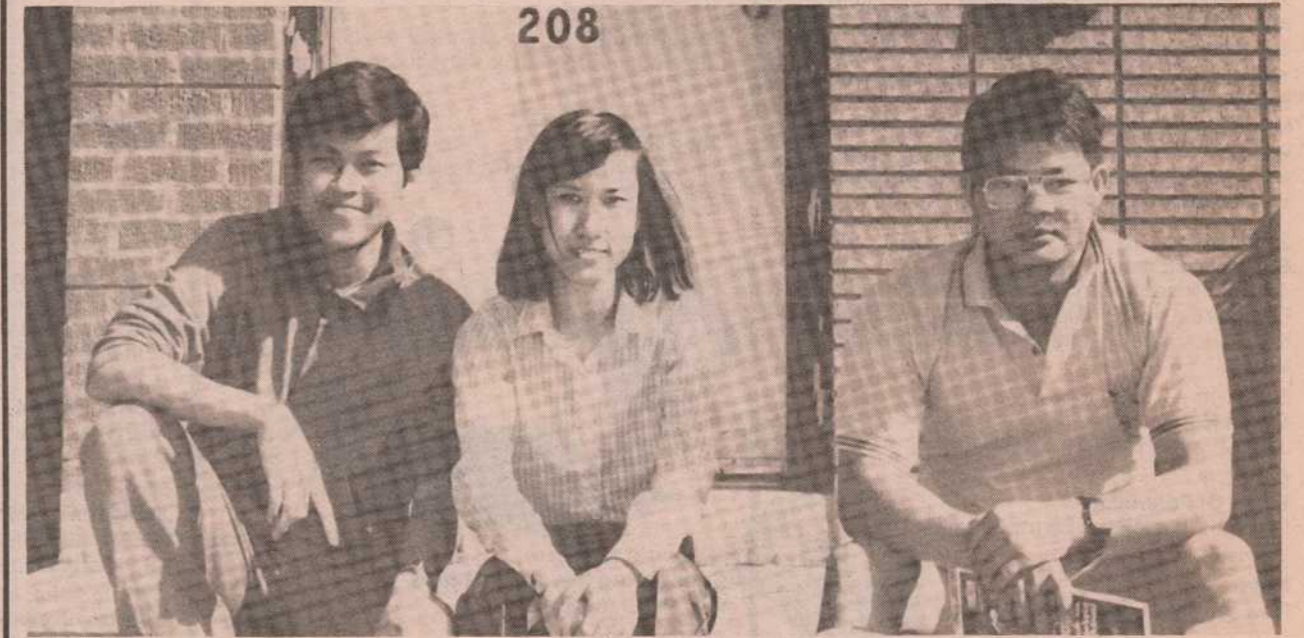
At 5 p.m., the Jamaican sun sets in Zion and American music moves to center stage for another salty Saturday night. Exploring rockabilly and the roots of rock and roll, host Robert Moss chooses from a wide variety of today's rockabilly and the artists who were instrumental in its development.

In 1984, Bob convinced Violet Ruybal that KRCL was the "in" place to be, she agreed. After a brief training stint, she began co-hosting the show with him in January of 1985. Violet has had time to get over the "on mike" jitters and is now devoting time to improving her production skills. Her musical tastes run from "popular to raunchy" though she prefers the very early rock and rollers such as Elvis.

The night progresses. 7 p.m. The tone and shape of Saturday night shifts into second gear, with the singular sounds of Jon Bray's Phonosynthesis. For the last two and a half years Jon's been amassing a record collection of what he terms, "modern music that's not so modern anymore. Most of what I play is about four or five years old." While much of his music may no longer be commercially popular, Jon keeps his show fresh by avoiding repetition. He especially likes to feature "special" programs exploring the music of a particular artist or group. Recent specials include groups such as U2, The Police, David Bowie and The Cure. Future Phonosynthesis specials will include another David Bowie feature as well as the group Bauhaus. "Basically, I play music I want to listen to. I try not to dictate other peoples' tastes in music ... that's the beauty of the medium; you can choose what to listen to and if you don't like something you can always turn it off." Listeners can be happy with Jon's future plans: "As long as KRCL and myself are both in town, I'll be here on Saturday nights from seven to nine."



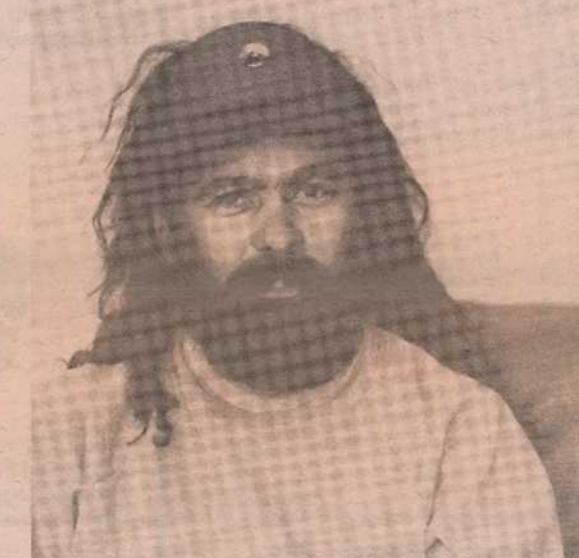
Vic Fernandez, Asian Chimes (Philippino)



208



Robert Moss and Violet Ruybal, American Music



Myron Fairbanks, Smile Jamaica



Darrell Young, Asian Chimes (Chinese)



Dale Carlson, Saturday Sagebrush Serenade

Asian Chimes helps the community to retain images of home while also keeping our traditions and values alive in our children.

Tom Blackwood

Sunday

6 to 7 a.m.
Scooba Dooba
(continues from Saturday)
Hamamoto presents an assortment of oddities and niceties during the wee hours.

7 to 10 a.m.
Living The Circle Of Life
Jim Bilagody with Native American music, news and information. (Donna Land hosts the first Sunday of each month.)

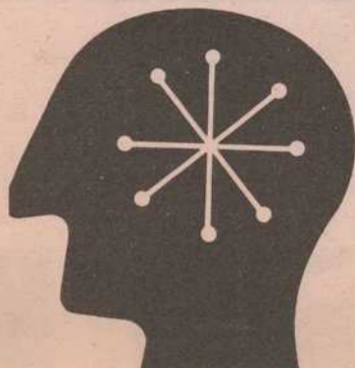
10 a.m. to 2 p.m.
Sagebrush Serenade
Music to ease you from your morning cup through your Sunday afternoon. Manageable folk & rock with a country flavor with Rick Summers & Doug Watts. Natalie Atherton sits in once a month.

2 to 5 p.m.
Bluegrass Express
Join the Finners—Papa Bob and sons Matt and Rex—for the best in bluegrass; music that is at the root of a lot of the country and folk tunes popular today.

5 to 6 p.m.
Greek Hour
John Shilaos and Mike Katsan host.

6 to 7 p.m.
Voice Of Polynesia
Music and information from the Pacific islands.

7 to 9 p.m.
Nexus
New age music with John Schellinger



9 to 10 p.m.
New Dimensions
10 to 11 p.m.
Hearts Of Space
The best of the new electronic and electro-acoustic space music.

11 to 1 a.m.
Tentacles
Unique music from the avant garde, including jazz, new wave, rock and electronic, with host Kurt Setzler.

1 to 3 a.m.
Sunday Moods
A potpourri of music with an emphasis on instrumental or voice-as-instrument selections. Hosted by Jim Sewell.



3 to 6 a.m.
Broken Mirrors
Your hosts Click Dark & Blue Embers pump literary classics into the bloodstream of Rock 'n Roll to create a method to their madness.

Monday

6 to 8:30 a.m.
Breakfast Jam
A mix of country, folk, rock and a sprinkling of blues - goes down well with coffee and toast.

8:30 to 9 a.m.
Morning Light
"Consider The Alternatives" — global concerns.

9 to 11:30 a.m.
Le Cafe Folk
Contemporary folk music with a touch of tradition hosted by Donna.

11:30 a.m. to 12 noon
Our Art
With Marilyn Scharine, Carlie Jimenez or Desiree Mays.



12 noon to 12:30 p.m.
Concerning Gays & Lesbians
With Mickey & Dean.

12:30 to 1 p.m.
Cambridge Forum
Public affairs that focuses not on passing headlines but on the more permanent problems — the news behind the news.

1 to 2 p.m.
Reggae Beat
Hosts Roger Steffens and Hank Holmes present the best in new releases, yet to be released studio recordings, information and interviews with reggae artists.

2 to 4 p.m.
Radio Libre
Popular music from the French-speaking world, plus news of the French community (with English subtitles). Hosted by Brad Charon and Frank Goodbold.

4 to 6:30 p.m.
Drive Time Magazine
Lynne Van Dam and John Greene alternate as hosts, each with an eclectic blend of rock, sweet sounds and important information. Note the segues.

6:30 to 7 p.m.
Pacifica News
7 to 7:30 p.m.
Conversations from Wingspread

7:30 to 9:30 p.m.
Great Basin Blues
The best in Blues, N.Y. to L.A., Texas to Chicago. Blow away the good old Monday Blues with Ken Meyer as guest host for Brian Kelm in June & July.

9:30 to 11:30 p.m.
Just The Blooze
Blues continues into the evening with Dave Spencer.

11:30 p.m. to 1:30 a.m.
Blues/Rhythm and Blues
How influential have the blues been? Tune in and find out with host Joel Knuth.

1:30 to 3:30 a.m.
The Grab Bag
Join host Ed Bagley for a pleasant mix of rock from the sixties, seventies and eighties; chosen at random from the grab bag.

3:30 to 6 a.m.
Celestial Seasonings
Spice your early morning with a gentle mix of music from folk to rock, served by your host Terinell Pelley.



Tuesday

6 to 8:30 a.m.
Breakfast Jam
Contemporary and mainstream jazz mixed with light rock to suit your morning mood. Hosted by Tom Blackwood.

8:30 to 9 a.m.
Morning Light
"First Person Radio" — Native American weekly news.

9 to 11:30 a.m.
Women Or Nothing
Music and information from a woman's perspective — that of Julie Lueders.

11:30 to 12 noon
Community Notes
Rotates among Terry Tempest Williams, Shirley Stevens and Karen Bowers, Primetime (nationally produced), and representatives of Utah Legal Services.

12 noon to 12:30 p.m.
Handicapables



12:30 to 2 p.m.
La Voz Del Pueblo
Music for the people with Enfoque Nacional at 1:00 p.m. in Spanish. Host - Ornel Contreras.

2 to 4 p.m.
Menage A Musique
An eclectic mix of music for those who like it a bit less conventional. A musical session that won't always leave you in the same old position. Hosted by Bruce.

4 to 6:30
Drive Time Magazine
Dan Maryon picks up your drive with rhythm — reggae and ska — as he informs you of local happenings.

6:30 to 7 p.m.
Pacifica News
7 to 7:30 p.m.
Radio Arts
"Laterdays Radio"

7:30 to 9:30 p.m.
Generic Radio
Not really. The playlist reads: reggae, new wave, rockabilly and new music. Programmed by Barb Guy.

9:30 to 11:30 p.m.
Beat Crazy
Starting off with a scream — new wave and assorted nuts with Andy Trauba. So, c'mon cats! Let's go beat crazy!

11:30 p.m. to 1:30 a.m.
Mission Impossible
The agents: George Alex and Bob Bedore. The mission: to play two hours of progressive music. Impossible?

1:30 to 3:30 a.m.
Combination Special
A combo of just about every genre of music for your pre-dawn hours. Weekly specials served by Lisa Sewell.

3:30 to 6:00 a.m.
Beat The Rooster
Join Dave Bowyer or Brent Burdette each week for a fine blend of true rock, comedy and trivia.

Wednesday

6 to 8:30 a.m.
Breakfast Jam
Butch Shumway or Eric Kingston will make waking a pleasure with a blend of jazz and folk music designed for the morning.

8:30 to 9 a.m.
Morning Light
"Common Ground" — international issues.

9 to 11:30 a.m.
Jazz Quart
Mike Anderson helps you appreciate jazz. Nothing to indicate it's midweek or midmorning — just good jazz.

11:30 to 12 noon
Senior Sound Off
With Dolly Young, Percy Devine or Marj Drury.

12 noon to 12:30 p.m.
Fairmenist Revolution
With Mac Gift.

12:30 to 2 p.m.
Sojourns
International contemporary and traditional music with Michael Schmidt.

2 to 4 p.m.
Solo Flight
Host Nick Gioello emphasizes the art of guitar music: solo and lead, acoustic and electric.

4 to 6:30 p.m.
Drive Time Magazine
Babs DeLay focuses all her energy into a tight mix, with dance music, Weekend Entertainment and issues.

6:30 to 7 p.m.
Pacifica News



7 to 7:30 p.m.
Consider The Alternative
Global concerns.

7:30 to 9:30 p.m.
Aural Decay
Old rock and new rock, accentuated with rockabilly, reggae and whatever is handy. Hosted by Dave Santivasi. It may be habit-forming.

9:30 to 11:30 p.m.
Night Vinyl!
Host Dave Jacobs combines a blend of 60s and 70s rock and folk classics rounded out with the latest additions to bring you a tasty way to end a Wednesday.

11:30 to 1:30 a.m.
Rough Mix
Your host Leo plays a mixture of music styles that shows both the diversity and the enjoyment to be found in all types of music.

1:30 to 3:30 a.m.
Altered States
Dave Iverson serves as tour guide for exploring acoustic, electric and keyboard oriented rock plus other oddities just for fun.

3:30 to 6 a.m.
Dr. Feelgood's Rx
A mix of soul, blues, rock, folk, reggae, classical & everything else except polka & opera. Tune in and feel good with John Wangsgard.

Thursday

6 to 8:30 a.m.
Breakfast Jam
Ease into the morning with blends of rock, folk, jazz and other assorted goodies with your host Jerry Schmidt.

8:30 to 9 a.m.
Morning Light
"The Third World."



9 to 11:30 a.m.
This Feminine Position
Maggie Laun brings you music by, for and about women. Interviews at 10:00 on a wide variety of topics pertinent to women.

11:30 to 12:30 p.m.
Lunch Encounter
Local, national and international public affairs.

12:30 to 1:30 p.m.
New Dimensions
1:30 to 2 p.m.
Totally Wired
A repeat of the entire series first aired on P.A. 91.

2 to 4 p.m.
Daydreams
Mark Jackman presents intricate patterns of sound, which are designed to enhance your daytime environment, woven from electronic, experimental and other alternative musical forms.

4 to 6:30 p.m.
Drive Time Magazine
Host Perry Shepard.

6:30 to 7 p.m.
Pacifica News
7 to 7:30 p.m.
Political Issues
7:30 to 9:30 p.m.
Musica Latina
Presented by Elena Gonzales featuring Latin music in a variety of genres from the South American traditional flutes to the American Latin pop scene.

9:30 to 11:30 p.m.
Fret 'N Fiddle
Traditional folk music from here and abroad, depending on your host, who could be Lewis Downey, Pete Tinker, Paul Truex or Mark Cantor. You'll get variety.

11:30 to 1:30 a.m.
Utah—Slavia
Utah's eastern European heritage lives! Proving the beauty of diversity we focus on the music of Yugoslavia, provided by Mladen Maric, Craig Miller and friends.

1:30 to 3:30 a.m.
Mr. Baggin's Show
Join host Dan Benaducci as he spins the early morning rock 'n roll with a smile.

3:30 to 6 a.m.
Music

Friday

6 to 8:30 a.m.
Breakfast Jam
Motown, R & B, soul, blues — music to make you move. Hosted by Reggie.

8:30 to 9 a.m.
Morning Light
"In Black America."

9 to 11:30 a.m.
Attitude Adjustment Session
Chuck Bradley does some soul adjustment to get you ready for the weekend.

11:30 to 12:30 p.m.
Lunch Encounter
Local, national and international public affairs.

12:30 to 1 p.m.
La Voz de la Gente
Host Robert Archuleta

1 to 2 p.m.
Latin Connection
Latin jazz, salsa, Latin rock — the entire connection with host Robert Velasquez.

2 to 4 p.m.
R & B Hideout
New soul is what you're looking for? It's here. Downtown funk brought to you by Ewell Madry with Mary Aguilar the first Friday of each month.

4 to 6:30 p.m.
Drive Time Magazine
Friday brings you the professor of R & B, Larry Ficks, presenting rhythm and blues and old rock and roll, plus social issues information.

6:30 to 7 p.m.
Pacifica News
7 to 9 p.m.
KRCL Jukebox
Music from the fifties, sixties and seventies to get to the root of your rock and roll fantasies. Hosted by Bill Komlos.

9 to 11 p.m.
The G Men
The most arresting music to be found. Host Chris Gittins.

11 p.m. to 2 a.m.
Dead Air
Join Andy Langton for a mix of classic rock and roll from the Rolling Stones to the Grateful Dead.

2 to 4 a.m.
Variables
Electronic, holistic, new age music brought to you by Thom Odom and Eric Gisler.

4 to 6 a.m.
Gospel Connection
Contemporary gospel that encompasses all categories of music. Tune in to Carol and Marvin Dixon for your early morning start.

Saturday

6 to 7 a.m.
Gospel Connection
(Continues from Friday)
Contemporary gospel that encompasses all categories of music. Tune in to Carol and Marvin Dixon for your early morning start.

7 to 10 a.m.
Asian Chimes
Music and information from the communities of Thailand, the Philippines, China and Viet Nam. Presented by hosts Samboom Mongkolosmat, Vic Fernandez, Darrell Young and Hang Nguyen.

10 a.m. to 2 p.m.
Sagebrush Serenade
From the best known to the least known rock artists of the sixties, don't miss "one of KRCL's best" with Dale Carlson.

2 to 5 p.m.
Smile Jamaica
Reggae — the roots, as well as current releases. Join Myron Fairbanks as he takes you through the music of Jah. As an added bonus, "Reggae Beat," the archives of reggae.

5 to 7 p.m.
American Music
Rockabilly with Robert Moss & Violet Roybal.



7 to 9 p.m.
Phono Synthesis
Host Jon Bray offers the latest in new wave, rockabilly, punk and dance music.

9 to 11 p.m.
No Guarantee
Noise punk, avant rock, avant punk, noise rock, avant noise, punk rock. But, no guarantee. Host Ron Ward.

11 p.m. to 4 a.m.
Behind The Zion Curtain
Synthetic, authentic punk — hard core! Brad Collins is the guilty one who cracks your Saturday nights and Sunday morns with the sounds of the new wave.

4 to 6 a.m.
Scooba Dooba
Hamamoto presents an assortment of oddities and niceties during these wee hours.

Program schedule

	SUNDAY	MONDAY	TUESDAY	WEDNESDAY	THURSDAY	FRIDAY	SATURDAY
6 a.m.							Gospel Connection
7 a.m.	Scooba Dooba						
8 a.m.		Breakfast Jam	Breakfast Jam	Breakfast Jam	Breakfast Jam	Breakfast Jam	
9 a.m.	Living The Circle Of Life	Morning Light	Morning Light	Morning Light	Morning Light	Morning Light	Asian Chimes
10 a.m.		Le Cafe Folk	Women Or Nothing	Jazz Quart	This Feminine Position	Attitude Adjustment Session	
11 a.m.							
12 p.m.	Sagebrush Serenade	Our Art Concerning Gays Cambridge Forum Reggae Beat	Community Notes Handicapables	Senior Sound Off Fairmenist Revolution	Lunch Encounter	Lunch Encounter	Sagebrush Serenade
1 p.m.			La Voz Del Pueblo	Sojourns	New Dimensions	La Voz de la Gente	
2 p.m.					Totally Wired	Latin Connection	
3 p.m.		Radio Libre	Audio Gymnastics	Solo Flight	Daydreams	R&B Hideout	Smile Jamaica
4 p.m.	Bluegrass Express						
5 p.m.		Drive Time Magazine	Drive Time Magazine	Drive Time Magazine	Drive Time Magazine	Drive Time Magazine	
6 p.m.							American Music
7 p.m.	Voice Of Polynesia	Pacifica News Wingspread	Pacifica News Radio Arts	Pacifica News Consider The Alternatives	Pacifica News Political Issues	Pacifica News	
8 p.m.							KRCL Jukebox
9 p.m.	Nexus	Great Basin Blues	Generic Radio	Aural Decay	Musica Latina		
10 p.m.	New Dimensions					The G Men	No Guarantee
11 p.m.	Radio Rep	Just The Blooze	Beat Crazy	Night Vinyl	Fret 'N Fiddle		
12 a.m.	Tentacles					Dead Air	
1 a.m.		Blues/Rhythm and Blues	Mission Impossible	Rough Mix	Utah-Slavia		Behind The Zion Curtain
2 a.m.	Sunday Moods						
3 a.m.		The Grab Bag	Combination Special	Altered States	Mr. Baggins Show	Variables	
4 a.m.							
5 a.m.	Broken Mirrors	Celestial Seasonings	Beat The Rooster	Dr. Feelgood's Rx	Twilite Toons	Gospel Connection	Scooba Dooba
6 a.m.							

Southeast Asia
continued from page 7

Twilight. We're cruisin' now with No Guarantee. Ron Ward describes his unorthodox format as "Random Theatre." "I like to get a response from the audience ... it's usually a love or hate reaction too; there's no middle ground." Ron is an artist of many talents. He plays guitar as well as wooden flutes and he paints and writes. No Guarantee on KRCL from his vantage point is just addicting. I like to hear callers say "Hey, that was great." I get edgy when I'm away from it for awhile. "Ron's been with the station for four years, starting originally with the program Tubular Waves, which explored African music and rhythms. For Ron, the show is like a canvas; a surface upon which to display the rainbow of his musical palette. "The act of creation is the whole point of existence as far as I can see."

11 p.m. - And the lights flash and flare as the night grinds into high gear with five hours of hard core punk and maximum rock and roll. Salt Lake's King of Punk, Brad Collins is behind The Zion Curtain. Almost since KRCL's first sounds Brad has been spinning disks; only his show has changed. Because

of the Jon Bray, Ron Ward and Barb Guy mix, Brad has been able to tighten his format to fill the hard core gat in Salt Lake radio. Brad, who is the owner of Raunch, a record store, credits the store with keeping him on top of the newest in punk music. He keeps close ties with the local punk community through the station and Raunch. "KRCL, along with Cosmic (Aeroplane) have had the most to do with the growth of the punk community in Salt Lake." Brad's future? He plans on expanding his store, buying more records and adding a new feature, "Maximum Rock 'n Roll" to Behind The Zion Curtain.

4 a.m. The night winds down. Saturday's over. For nine hours, from Southeast Asia to Behind The Zion Curtain, our programmers have defined us. The music, the news, and the views of this diverse group have soothed, informed and entertained us. Perhaps Myron put it best: "You get all these people from different walks of life and they've all got one common goal and that's just to make it work. It's good to see that."

At 5 p.m., the Jamaican sun sets in Zion and American music moves to center stage for another salty Saturday night.



Jon Bray, Phonosynthesis

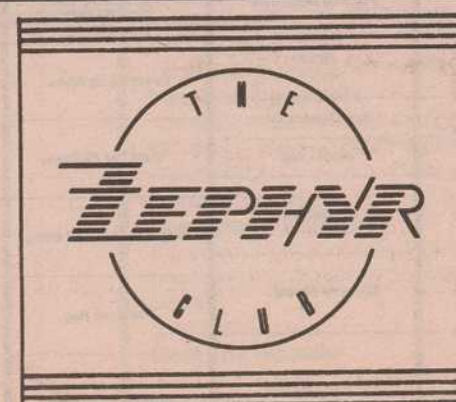


Ron Ward, No Guarantee



Brad Collins, Behind the Zion Curtain

Tom Blackwood



SMOKEY'S RECORDS

1515 S. 15th East
Salt Lake City, Utah
84105

(801) 486-8709



INS & OUTS

Volunteer activities at a glance.....

by Tom Blackwood

Keeping pace with revolving door motion at KRCL can be a dizzying affair. With over 120 volunteers (at last count) change is inevitable. In an effort to keep a finger on the pulse of our hyper-activities, this column will try to keep you posted on the comings and goings, the ins and outs of our marvelously diverse volunteers.

Bon Voyage

Just when we were starting to get used to him, one-half of that ubiquitous G-Men team, Hugh Garner, took off the the austere life on a kibbutz in Israel. La Chaim, Hugh, we'll miss you. Two of our Breakfast Jam Hosts also flew the coop. Bill Henkel, Monday BJ moved to Michigan to build a house and Bill Larned, Friday BJ just flew. And on early morning Fridays, C.W. Cunningham is no longer with us. We will miss these volunteers, but we wish them all well and thanks for the devoted service.

Midsummer Madness

R.I.P. for the summer: Desertaire will go into its usual summer hibernation. Look for its re-emergence in the fall.

Ken Meyer, a KRCL stalwart had to leave his Tuesday, 2 pm to 4 pm time slot for a day job, but don't despair, he's subbing on the Great Basin Blues, Mondays, 7:30 — 9:30 pm for poor Brain Kelm, who has to spend all summer in Hawaii. Lisa Mace, our faithful Grateful Dead Quilt-maker has shifted to the Monday Breakfast Jam show and promises to "wake us up early." Natalie Atherton, of Sunday Sagebrush fame is taking a semi-retirement sabbatical. She'll still brew with us once a month, but she needs more time for work and parenting. Go to brunch, Natalie.

Welcome

Nice, surprises are in store for our listeners with the influx of our new programmers. George Ricker will get your weekend started early on Friday Breakfast Jam with his own special brand of soul and jazz. On Sunday Sagebrush Serenade, Doug Watts and Rich Summers are the two mornings knights to the rescue. They'll co-host three weeks per month. John Wangsgaard has taken over the Thursday, 3:30 to 6 am slot with Dr. Feelgood's Prescription. Tune in Wednesday mornings from 1:30 to 3:30 am for a new show with a new volunteer. Combination Special, hosted by Lisa Sewell. Good news for the nostalgic: Menage a Musique returns to KRCL on Tuesday afternoons from 2 until 4 pm. Bruce Saffron is the new host; Ken Meyer has taken a day job. Sunday 1 to 3 am has been changed to Sunday Moods with new volunteer Jim Sewell hosting.

Congrats

Marilyn Scharine of Our Arts has received a \$2,000 grant from the Utah State Arts Council. The grant will be used to revamp and improve her **Utah Writers radio** series. Once complete, the series will be re-broadcast on KRCL as well as being made available for national distribution through the National Federation of Community Broadcasters. In addition, funding from the Utah State Board of Education will be used to put the series on cassette tapes for local schools and libraries.

Pesticide Use & Abuse In Utah

In keeping with our commitment to news and public Affairs, and particularly to local issues, KRCL will be presenting a special documentary entitled *Pesticide Use — And Abuse — In Utah*. Hosted, and written by, KRCL volunteer Mary Menconi this half-hour program explores the impact of pesticides upon the people and environment of northern Utah. The documentary will feature interviews with local environmental and agricultural specialists, as well as health professionals. While currently working in agriculture, Mary has also had experience in environmental research. It was this dichotomy of experience that led her to do this documentary. "Most people view agriculture and the environment as opposing issues," she says. "In actuality, they are just different aspects of the same thing." Tune in on June 14 at 7 pm or July 25 at 11:30 am and hear what's happening with pesticides in northern Utah.

Time on your hands and wings on your feet?

Wanted at KRCL

Zany zealot to help sell ads for KRCL's Program Guide

Qualifications

Unusually thick skin
High tolerance for pain
Fanatic devotion to KRCL

Also wanted: writers, photographers and illustrators

Qualifications

Ditto

Please call during working hours, 363-1818.

SUPPORT

The Alternative

Name _____
Address _____
City _____ State _____ Zip _____
Telephone _____

MEMBERSHIP DUES (Annual)

- \$45-Low Income, Student, Elderly
 - \$20-Supporting (regular)
 - \$30-Supporting Plus KRCL T-Shirt!
 - \$50-Sustaining (may be paid \$10/month) Plus KRCL T-Shirt
 - \$100 (or more)-Patron (may be paid \$25/month). Plus KRCL T-Shirt.
 - New Subscription
 - Renewal/Addition
- T-Shirt Size: (S) (M) (L)

All Contributions Are Tax-Deductible.
Mail to:



KRCL 91FM

Listener's Community Radio of Utah
208 WEST 800 SOUTH
SALT LAKE CITY, UTAH 84101
TELEPHONE 801-363-1818



SAVE DOLLARS
ON EVERY YARD! WITH
CARPET AT LOW, LOW PRICES

We have our own
professional installers

HUNDREDS OF ROLLS ON DISPLAY

- DISCONTINUED PATTERNS
- SLIGHT IRREGULARS
- REMNANTS
- EXPERIMENTAL STYLES
- VINYL FLOORING
- OUTDOOR CARPET
- FIRST QUALITY CARPET
- POOR MANS ORIENTAL RUGS

COMPLETE SUPPLIES FOR THE DO-IT-YOURSELF EXPERT ADVICE

HOURS MONDAY THRU FRIDAY 10 AM TO 7 PM
SATURDAY 10 AM TO 6 PM CLOSED SUNDAYS

973-7046

3725 SOUTH REDWOOD ROAD



Carpet & Rug Dealers New
Salt Lake 1022237A 60115RD
Henderson 4-5-85
Carpet Barn

Brown Bag
continued from page 3



RIO GRANDE CAFE
A FINE MEXICAN CAFE
RIO GRANDE TRAIN STATION
455 W. 300 SO.

Cabin Fever
from ridiculous to sublime
greeting cards & diversions
that break the monotony!

66 WEST FOURTH SOUTH



Rama Nueva (Sounds of the Andes).

variety of people in the audiences — playing for people who otherwise might not have a chance to hear such music. Yasamina Kasal of Kismet, a dance troupe that does Danse Orientale and other Mid-Eastern dances, says that after their first year they learned to wear shoes so they wouldn't burn their feet on the hot pavement. But they too like playing to the relaxed, intimate crowds. She usually gives a talk first, introducing their dances and some Arabic words and customs before she and her troupe settle into their special Mideast rhythms.

Because of the quality of the performances and the detailed planning that the Salt Lake Arts Council puts into the series — the end result is a thoroughly enjoyable contribution to the aesthetic and cultural life of the community. In addition, it employs people, brings businesses and corporations together, enhances the city for tourism and keeps the downtown area a vital and lively center. The live broadcasting will further increase the reach of local talent — bringing it to the ears of people who cannot make it to the live performances, and keeping the art of live broadcasting alive in Salt Lake City.

On Location for Sunspot

Mark Jackman and Lynne Van Dam recently toured several alternative energy sites in Southern Utah with the Utah Energy Office and the Utah Solar Advisory Committee. They are

pictured here in front of an envelope house in Cedar City and a building on the campus of the College of Southern Utah in Cedar City which is almost totally powered by the sun.



Mark Jackman

Sunspot

Sunspot, energy ideas for the self-reliant, is a production funded by the Utah Energy Office and the Utah Solar Advisory Committee. The oil crisis of the seventies

struck a stunning blow to the promise of perpetual fossil fuels gushing forth for our unlimited use. Monthly utility bills are a grim reminder that the days of cheap energy are long gone.

Conservation is the first step toward self-reliance, plus alternative and renewable energy sources are fast becoming more attractive, available and affordable. Solar, water, wind, geo-thermal, and biomass are finally getting the attention they deserve.

Sunspot was created to stimulate interest and encourage wider public understanding and utilization of these exciting alternative and renewable energy sources.

Sunspot is written and produced by Lynne Van Dam with technical expertise by the Utah Energy Office and the Utah Solar Advisory Committee in the production studios of KRCL. Original music and engineering by Mark Jackman. Speakers are Mark Cantor and Lynne Van Dam.

Sunday
Living The Circle 7:30 a.m.
Sunday Sagebrush 12:30 p.m.
Bluegrass Express 4:00 p.m.
Nexus 8:00 a.m.

Monday
Breakfast Jam 7:00 a.m.
Concerning Gays 12:30 a.m.
Radio Libre 3:00 p.m.
Blues/Rhythm & Blues 12:30 a.m.

Tuesday
Celestial Seasonings 4:30 a.m.
Women or Nothing 11:00 a.m.
Drive Time 4:30 p.m.
Generic Radio 9:00 p.m.

Wednesday
Beat The Rooster 5:00 a.m.
Fairmenist Revolution 12:30 p.m.
Solo Flight 3:00 p.m.
Night Vinyl 11:30 p.m.

Thursday
Breakfast Jam 7:30 a.m.
Day Dreams 3:00 p.m.
Musica Latina 8:00 p.m.
Mr. Baggins Show 2:00 p.m.

Friday
Breakfast Jam 6:30 a.m.
R & B Hideout 2:30 p.m.
KRCL Jukebox 9:00 p.m.
Dead Air 1:00 a.m.

Saturday
Gospel Connection 6:00 a.m.
Asian Chimes 9:00 a.m.
Smile Jamaica 4:00 p.m.
Phonosynthesis 8:00 p.m.

Short Features

Sunday
Women's News 11 a.m.
Wilderness Update 12 p.m.
In the Public Interest 1 p.m.
Environmental Update 3 p.m.

Monday
Environmental Update 10:00 a.m.
Central America Update 11:10 a.m.
In the Public Interest 11:27
Byline 3:57 p.m.

Tuesday
Central America Update 7:00 a.m.
Women's News 9:55 a.m.
In The Public Interest 11:27 a.m.
Byline 3:57 p.m.

Wednesday
Nuclear Waste Report 7:00 a.m.
In The Public Interest 11:27 a.m.
Byline 3:57 p.m.
Weekend Entertainment 4:30 p.m.

Thursday
Wilderness Update 7:00 a.m.
Weekend Entertainment 9:30 a.m.

Women's News 10:30 a.m.
In the Public Interest 11:27 a.m.
Byline 3:57 p.m.
Environmental Update 4:30 p.m.

Friday
Weekend Entertainment 7:00 a.m.
In the Public Interest 11:27 a.m.
Byline 3:57 p.m.
Central America Update 6:00 p.m.
Weekend Entertainment 7:30 p.m.

Saturday
Nuclear Waste Report 11:00 a.m.
Weekend Entertainment 12:00 p.m.
In the Public Interest 1:00 p.m.

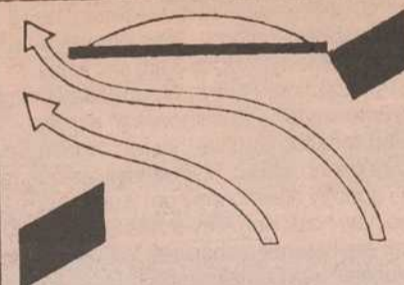
Daily
StarDate airs at 8 a.m., 5:30 p.m. and 10 p.m.
Morning Light airs at 8:30 a.m.
Monday, "Consider The Alternatives;"
Tuesday, "First Person Radio;"
Wednesday, "Common Ground"
Friday, "In Black America."

B·A·B·S·D·E·L·A·Y

a Realtor as unique as her name!

CREATIVE in helping you find the right home with the best financial package you desire; HONEST to do business with, a proven record of happy clients; BOLD enough to ask the right questions of the seller and the buyer.

BERE REGIS REALTY (801) 532-1424



ALADDIN VENTILATING SKYLIGHTS

In addition to providing natural light . . .

- provide superior venting characteristics by allowing warm and stale air to escape from high room levels.
- close tight to eliminate air leakage.
- are available in many different sizes and shapes.

Additional ventilation is facilitated by opening of lower windows.



150 West 2950 South
Salt Lake City, UT 84115
801 / 486-1000

Salt Lake Federated MUSICIANS

we're the PROFESSIONALS
486-0713

We Support the Performing Arts Series



D.B. Cooper's

Latter Days Radio

Every Tuesday evening at seven o'clock Latter Days Radio will present sound stories by audio artists from all over the country. What's an audio artist?

What's a sound story? These questions and others too (like what's your favorite fish?) will be answered every Tuesday evening at seven o'clock.

Thanks

謝謝 5555555555 merci Faka Faka Gracias Salama 10 29219 A'he'hee Cān'ān Mālo ETΧΑΡΙΣΤΩ Thank you!

Editors Note: KRCL is always in the mood to thank someone for their kind support. Because of our multilingual audience, we want to thank all our listeners in just some of the languages spoken on KRCL. From left to right: Chinese, Cambodian, French, Samoan, Spanish, Phillipine, Laotian, Navaho, Vietnamese, Tongan, Greek and did you guess? English.

Thanks to our underwriters

Underwriting a show, a public affairs program or a short feature is a way for businesses or individuals to provide financial support for KRCL. Because KRCL is non-commercial, the monies donated are tax deductible. In exchange for the donation, KRCL broadcasts a brief message which is descriptive in nature and non-promotional. The message is a means for KRCL to recognize this valuable contribution.

Underwriting is an extremely important layer of financial support for the station. Approximately 15 percent of the current budget is derived from underwriting. The goal is to raise that level to 25 percent.

If you are interested in underwriting a program, please call 363-1818 during working hours and a packet of information will be sent to you. If you are a listener, please support our underwriters.

Acoustic Music
857 East 400 South
Salt Lake City

Cabin Fever
66 West 400 South
Salt Lake City

Carpet Barn
3725 Redwood Road
West Valley City

Catalyst Magazine
Salt Lake City

Cosmic Aeroplane
258 East 100 South
Salt Lake City

D.B. Coopers
19 East 200 South
Salt Lake City

Fishers Cyclery
2175 South 9th East
Salt Lake City

Fowler, Ferguson, Kingston and Reuben
350 South 400 East
Salt Lake City

Gardiner Distributing
554 West 100 South
Salt Lake City

In The Mood
850 South 900 South
Salt Lake City

Painted Word
401 South 400 West
Salt Lake City

Performance Audio
2358 South Main Street
Salt Lake City

Phillips Gallery
444 East 2nd South
Salt Lake City

Presto Print
259 South State Street
Salt Lake City

Raunch Records
375 West 400 South
Salt Lake City

REI
Brickyard Plaza
Salt Lake City

Rio Grande Cafe
270 South 455 West
Salt Lake City

Salt Lake Roasting Company
249 East 400 South
Salt Lake City

Skip Schmielt Photo
740 West 1700 South
Salt Lake City

Smokey's Records
1515 South 1500 East
Salt Lake City

Sundance
Provo Canyon, Utah

The Upper Crust
1460 Foothill Drive
Salt Lake City

Utah Endowment for the Humanities
10 West Broadway
Salt Lake City

Utah Museum of Natural History
University of Utah
Salt Lake City

Wagstaff Music
206 East 6400 South
Murray

Wasatch Touring
702 East 100 South
Salt Lake City

Yengich, Rich, Xaix and Metos
72 East 400 South
Salt Lake City

The Zephyr
301 South West Temple
Salt Lake City

Radiothon Sponsors

KRCL could not have a Radiothon without the help and support of the local businesses. The following is a list of businesses that contributed premiums for us to offer as incentives to you, the listener and food for the tired volunteers to eat while conducting the Radiothon. Show these businesses your support and be sure to mention that you support them because they support KRCL. Thank You.

Acoustic Music

Afterwords Restaurant
Alabama Barbecue Pit
Alpine Chimney Sweeps
Angelinos
Blue Mouse Theatre
Bonded Bicycle Couriers
Brighton Ski Area
Buckle Busters
Busy Bee Cafe
Cactus Growers of Utah
Cabin Fever
Cartier's
Casa Del Sol

Classic Food Products
Cosmic Aeroplane
Creative Glass
Creative Trends
Dell Express
Dine Cafe
Domus
Dream Garden Press
Eastern Onion

E.I.B.O.S.
Eli's Records & Tapes
EL FAROL
RISTORANTE DELLA FONTANA
Fourth East Style
Sub-Quin dba Free Wheeler Pizza
Godfather's Pizza
Haircutters Studio
Hansen Planetarium
Holubar Mountaineering
Hula Moons
Intermtn. Guitar & Banjo
Interwine

In The Mood Hair Design
The Jeweler's Guild
Chuck Jones
Junior's Tavern
Eric Kingston
Kings English Bookstore

Kirkham's Outdoor Products
Kismet Mid-Eastern Dance Co.
Kites & Things Ethereal
Koyo Restaurant
Steve Kuhnhausen
LA FRONTERA CAFE
Howard Lundren
Market Street Broiler
Market Street Grill
Michael Martin
McDonalds
Nature's Way Sandwich Shop
Network Magazine
The Oyster Bar
The Painted Word
Le Parisien Restaurant
Pasta Mulino
Peak Performance
Roly Pearson
Pepsi-Cola
Phillipine Oriental Restaurant & Phillipine Import
The Piano Shop
The Pie Pizzeria
Pioneer Memorial Theatre
The Pizza Oven
The Pub
Gravity Sports Films Inc.
Raunch Records
RDT
Ririe-Woodbury
Salt Lake Acting Company
Salt Lake Art Center
2nd Avenue Market
Silver Fork Lodge
Smokey's Records
Solitude Ski Resort
Spudnuts
Sun Futon
Sundance Ski Area
Utah Opera Company
Utah Museum of Natural History
Utah Women's Clinic
Waking Owl Book
Wasatch Touring
The Wave Maker
Western Travel
Denise Wilcox & Dave Sawm
James Wilcox
Zafod's Auto Service
The Zephyr Club

RAUNCH
375 WEST 400 S
801-532-6592
SALT LAKE CITY, UTAH 84101

WITH...
U.S., EUROPEAN,
U.K., JAPANESE
SPEEDOPE,
U.C. WAIVES,
RELEASES,
T-SHIRTS &
MUCH MORE!

MAIL ORDER

WASATCH TOURING
MOUNTAIN TRAVEL
SPECIALISTS

702 E. 100 S., SLC / 359-9361

Letters from our listeners

I am a Chicano High School student. My aunt said that she heard a program on KRCL where someone interviewed a Chicano writer. She said it was very good. I would like to hear it because some day I want to be a writer too. But I can't hear the radio until evening. Can you play the show at night?
Thanks
Joe B.

I was fortunate enough to be listening the first day you were on the air. With few exceptions I've been listening ever since. I've called most of your volunteer show hosts (DJ just sounds too cheap a term when discussing KRCL) through the past five years to say thanks.

I've been realizing since your last Radiothon how important KRCL is to me and now it's time for me to say a special thank you. I've given what I could on every Radiothon and that's still not enough. Previous to KRCL and Mr. Holbrook and crew, I was visiting a shrink to help me understand why I did not fit into S.L.C. society. Upon the conception of KRCL I learned I was by no means alone in my feelings, concerns, emotions, etc. Frustration ended, no more shrink (seriously) and I have since felt interest, civic involvement. Most all of which were introduced to me by you. All of your generous contributions have helped me find a reason for "putting up" with this strange city.

Today is a case in point: Thur. Breakfast Jam, Feminine Position, Golden Cradle, Poems to a Listener, New Dimensions (excellent), Totally Wired, Daydreams, Perry Shepard's Drive Time, Pacifica, P.A. 91, I enjoyed them all, admittedly I don't enjoy all ... of your programs such as your new Thursday Evening show, but that's what makes KRCL so great, is it's diversity. So now I'm listening to records of my two favorites, Laurie Anderson and Joan Armatrading, neither of which I had heard of before all of you.

I shall continue to sing the praises of KRCL. You make a mediocre city fantastic. Eternal Gratitude,
Scott G.

P.S. I'm concerned about my Friday night laughs with the (temporary, I hope) absence of Mr. Gittens & Garner. But I'm confident in your programming abilities. They are obviously in good taste (that didn't sound like the right choice of words referring to the "G-Men").

THE RECORD COLLECTOR
2048 South 7th East
484-6495

BUY
SELL
TRADE
NEW and USED
RECORDS
Specializing in
THE OLDIES

I didn't pledge this Spring, although I wanted to. I just never got around to it. So here's my donation for the first half of '85 because I feel you're definitely worth it. I'll put my vote in for the Wednesday morning Jazz program, your Friday afternoon Jukebox is great, and of course Saturday morning Sagebrush is definitive KRCL in my book. In general, you're top notch in my programming and I've learned a lot. Keep up the good, quality radio.
LR

I have been meaning to send a contribution for some time, but when I heard your broadcast of Catherine Cosmin's US Helsinki Commission report on KRCL this morning I decided to mail my check today. I was delighted to hear her concise and accurate description of the present-day situation of the Ukrainian nation in the USSR, something of which most Americans are profoundly ignorant.

Beyond that, any station that serves as a forum for the defense of the homosexual community and women's rights in (of all places) Salt Lake City deserves my support. I am certain that a number of your listeners withhold funds because of programs like "Concerning Gays and Lesbians." The size of my contribution is meant to make up for the deficiencies of that segment of the audience.

My mother had received compensation for being interred in one of Hitler's concentration camps. Monday I learned that the only people who survived the horror of those camps and were not even accorded the miserable gesture of financial compensation were homosexual men and women. This city and state sorely need the education and exchange of ideas provided by KRCL. As long as your programming policies do not change, you can be assured of my continued financial support.
Sincerely yours,
M.W.

I've written to you, and spoken to you regarding my dissatisfaction with the irregular programming of Pacifica News. I've contributed for a number of years with the express qualification that my (perhaps meager) contribution be used to help upgrade KRCL presentation of Pacifica News.

Because (1) news programming has not improved; (2) I am convinced it could drastically improve as a result of efforts within your power at this time (e.g. assign responsibility to make sure the news is recorded and aired daily in its entirety); (3) Pacifica News is in my opinion the most important service provided by KRCL: I have decided to stop contributing to KRCL until you take steps to make news programming respectable on KRCL, and afford to it the kind of attention it deserves.
Good Luck,
R.S.

Indulge Yourself

Hours
Mon-Thurs. 7 am - 7 pm
Fri. 7 am - 11 pm
Sat. 8:30 am - 11 pm
Sun. 8:30 am - 5 pm

THE UPPER CRUST
BAKERY / CAFE / CATERERS 1480 FOOTHILL DRIVE 583-5155

We were terribly disappointed that we could not hear "We Are the World" on KRCL. Sad,
Ethel & Paul

I would like to say that I really appreciate the wide variety made available on your station.

I would especially like to express my support for the Fret 'n Fiddle show. However, I would like to hear more of the early British Isles music and a little less of the American Bluegrass stuff on this program. There's plenty of the bluegrass available at other times, but this (the Fret 'n Fiddle) is really the only opportunity for me to hear the British Isles & early European folk music I love so much.

Thanks,
Chuck S.

Enclosed is my pledge and my thanks for your station - which is a real savior to us Elko types. 'Twas quite the surprise to find you on my tuner - and a shock to hear it's from SLC. Pleasant surprise.
Simply,
Dana P.

I am writing to thank you for providing an important resource for gay and lesbian people of Utah. "Concerning Gays and Lesbians" offers an effective insight about homosexuality to the gay and nongay public.

I have listened to this program change in scope and description. Its style and level of proficiency is perhaps comparable to many similar programs in Berkeley, San Francisco and Los Angeles. It is encouraging to know that a program like this can be produced and supported in Utah.

I hope the program has an opportunity soon to begin broadcasting at a different time. I believe KRCL would receive considerable support by changing the broadcast time to perhaps a Sunday evening or weekend afternoon.

Please keep this program going. The young gay and lesbian people in this area who hear the program are being given some hope of a better life than they have been told they deserve.
Sincerely,
David N.

THE ELEGANCE CAR CLUB
PRESENTS
THE ANNUAL
ELEGANCE-IN-MOTION
CAR SHOW
and the
2ND ANNUAL UTAH CHILE VERDE COOK-OFF
on SATURDAY JUNE 22, 1985
11:00 a.m. to 12:00 midnight
at the
EXPO MART, 230 West 200 South in
Salt Lake City

Featuring:
Low-Rider Car Show
Break Popping Contest
Professional Boxing Sparring Demonstration
Amateur Boxing
Karate Demonstrations
Kickboxing
Body Builders Contest
KRCL Programmers
Chili Verde Cook-Off

A BENEFIT FOR KRCL, INSTITUTE OF HUMAN RESOURCE DEVELOPMENT
AND AMATEUR BOXING. FOR ENTRY, VENDING OR DISPLAYING INFORMATION
CONTACT: ROBERT VELAZQUEZ 363-6767

CUSTOM CAR SHOW
Beer Brewed by Miller Brewing Co. Milwaukee WI