

Program Guide

December/January 1985-86



the early years
of rhythm & blues:
a journey

FEATURED ON:
Professor R&B's
Drive Time Magazine
Friday's
From 5:00 to 6:00 p.m.

208 West 800 South, Salt Lake City, Utah 84101
Phone (801) 363-1818

Non-Profit Organization
U.S. Postage
PAID
Salt Lake City, Utah
Permit Number 3973



Please notify us of any change of name or address.
The post office will not forward program guides.



A Time For Helping

...there are more soup kitchens serving more meals to people than at any time since the Great Depression.



Sue Purcell, Utah Issues

**BLESSED IS HE
WHO COMES IN THE
NAME OF THE LORD**



Al Hartmann, Salt Lake Tribune

St. Vincent's Dining Hall



Sue Purcell, Utah Issues

The number of poor people in the United States has increased by about 10 million since 1978.

**Join KRCL's Fourth Annual Food Drive
A TIME FOR HELPING (see story page 6)**

Report to the listener

As the Holiday season draws near, we at KRCL can reflect back upon the past twelve months and find plenty to celebrate. Once again our listeners demonstrated their support of the station by pledging over forty six thousand dollars during Fall Radiothon. Our thanks to all of you who pledged, and to all our volunteers who did their best to motivate their audiences. Our thanks also to the many folks who pitches in to answer phones, bring food, tell jokes, and generally keep the vibes positive during these nine and one half days.

This is also the year KRCL reached CPB qualification, a goal the station has pursued for the past three years. Along with an annual grant, the CPB qualification bestows upon us a one time grant of \$10,000 which must be spent on the construction of a satellite downlink.

We hope to have this project completed by Spring of 1987. Once this satellite facility is in place, KRCL will have an even greater access to nationally distributed programs available only to satellite users.

Additional annual financial support was garnered when KRCL signed a five year lease with the Mutual Broadcasting Co. this past summer. In exchange for an agreed upon monthly fee, Mutual will transmit data they take from satellite, and through the use of

our FM sub-carrier, offer that data to subscribers of their own.

Just this past week Mountain Bell donated a van to KRCL. We thank Mountain Bell for this soon-to-be, "mobile unit," and look forward to doing more remote broadcasts.

As the cover of this issue of the *Program Guide* indicates, not everyone is in a position to fully experience the joyful aspects of the holiday season. Beginning Thanksgiving week, KRCL will once again give listeners the opportunity to extend a hand to those in need. We'll be asking you to put together a bag of groceries, (non-perishables) and bring them down to the station. These food items will then be distributed to several food banks operated by the Salt Lake Community Action Program. We'll accept donations day or night from Nov. 25th through New Year's Day. We hope you'll participate and give yourself another reason to enjoy the holidays.

In closing, I'd like to officially welcome aboard our new Office Manager Cathy Siegel. Cathy comes to us very highly recommended and we feel fortunate that she chose KRCL as a place to exercise her talents and energy.

Here's hoping this holiday season is a time of Peace and Joy for you.

John Greene
Station Manager



Cathy and friend, Wasatch (a 3 1/2 year old Siberian Husky).

Welcome Cathy

Cathy Siegel, our new office manager, just flew into town from Portland, Oregon and made a perfect landing at KRCL, Radio Free Utah. Cathy graduated from Lewis and Clark College in 1984, spent another year being a freewheeling vagabond and then decided it was well nigh time to settle down to doing some "worth-while" work. She loves KRCL and what it stands for: "a true alternative to commercial radio." Cathy brings her own alternative style to KRCL, adding to the rich multiplicity of the station's staff and volunteer pool. Her management skills, print media skills and peopleknowhow are flavored with quiet enthusiasm and a gentle demeanor. We are very happy to welcome her into our little fold and hope you'll all get to know her soon.

Behind the Sounds

Board of Trustees

Chair

Gerald Kinghorn

Vice-Chair

Gail Della Piana

Board Members

Bob Flores, Maria Garcia, Barb Guy, Steve Holbrook, Larry Flicks, Howard Lundgren, Genaro Padilla, Jerry Schmidt, Paul Wharton, Maggie Wilde.

KRCL's Board Meetings are open to the public. Board meets on the first Thursday of even numbered months.*

Staff

Station Manager

John Greene

Operations Manager

Donna Land Maldonado

Office Manager

Cathy Siegel

Development Director

Lynne Van Dam

Chief Engineer

Lewis Downey

Artist-in-Residence

Scott Carrier

KRCL Volunteers

Cindy Adams, Gary Allen, Mike Anderson, Robert M. Archuleta, Natalie Atherton, George Alex, Ed Bagley, Deena Brazy, Bob Bedore, Dan Benaducci, Laurie Bennett, Jim Bilagody, Tom Blackwood, Sarah Boulette, Karen Bowers, Dave Bowyer, Chuck Bradley, Jon Bray, Deena Brazy, Brent Burdette, Mark Cantor, Dale Carlson, Brad Charon, Brad Collins, Omel Contreras, Babs De Lay, John Dean, Percy Devine, Marvin Dixon, Jim Elder, Myron Fairbanks, Pat Fenderson, Victor Fernandez, Larry Ficks, Bob Flinger, Matt Flinger, Rex Flinger, Doc Floor, Mack Gift, Nick Gioello, Eric Giesler, Chris Gittens, Elena Gonzales, Juan Gonzales, Frank Goodbold, Barb Guy, John Halaliku, Jimmy Hamamoto, Carol Huey, Carlie Jimenez, Dave

Iverson, Mark Jackman, Dave Jacobs, Mike Katsan, Glenn Keister, Brian Kelm, Erik Kingston, Bill Komlos, Andy Langton, Ray Larsen, Jeannie Lesh, Debra Levine, Julie Lueders, Lisa Mace, Mladen Maric, Dan Maryon, Desiree Mays, Lynne McCue-Hamilton, Sandra McIntyre, Mary Menconi, Ken Meyer, Dean Michaels, Craig Miller, Annina Mitchell, Jeffrey Montague, Maureen Mooney, Becky Moss, Robert Moss, Kevin Murphy, Micaela Nelligan, Hang Nguyen, Thom Odom, Roland Pearson, Terinell Pelley, Harry Piltz, Vicki Pugmire, Linda Reseder, Nini Rich, George Ricker, Violet Ruybal, Bruce Saffran, Dave Santivasi, Marilyn Scharine, Richard Scharine, John Schellinger, Jerry Schmidt, Ellen Selu, Wayne Selu, Kurt Setzer, Jim Shelton, Perry Shepard, Al Sherwood, John Shilaos, Butch Schumway, Gary Smith, Sam Smith, Chara Souratha, David Spencer, Shirley Stevens, James Stringfellow, Rick Summers, Matthew Sweetman, Pete Tinker, Andy Trauba, Paul Truex, Joel Uljakiola, Robert Velasquez, Grady Walker, Dana Wanders, Ron Ward, Terry Tempest Williams, Carolyn Wood, Darrell Young, Dolly Young, Grey Young

Program Guide Staff

Editor

Lynne Van Dam

Production and Design

Barbara Betthausen

Contributing Writers

Marilyn Abildskov, John Paul Brophy, John Greene, Donna Land Maldonado, Bruce Plenk, Lynne Van Dam,

Typesetting

Karen Heminway, Alphabet Soup

Proofreading

Donna Land Maldonado

Contributing Photographers

Al Hartmann (Salt Lake Tribune), Rick Summers, Sue Purcell, Skip Schmielt

Advertising Representatives

John Schellinger, Jerry Schmidt

Circulation

Cathy Siegel

On the Cover

Al Hartmann, Salt Lake Tribune, Oldtimer at St. Vincent's Dining Hall



BY BRUCE PLENK

On a recent trip to Nicaragua, I had the opportunity to visit two radio stations much like KRCL and talk with staff members about life in Nicaragua and the role they see their stations playing in developing a new society in that country. The stations are both located in old buildings, have old equipment, can't afford to expand their local news and public affairs programming as much as they want to and are competing with newer, slicker, more powerful stations. Nonetheless, they are hanging in there. Sound familiar? Read on.

In case you have not been listening to the Central America Update, in 1979 the Nicaraguan people overthrew a brutal dictatorship led by the Somoza family and have been trying since then to develop an egalitarian society, hoping to combine the political freedoms of the western democracies (freedom of speech, press, etc.) with the economic rights of the socialist countries (guaranteed jobs, housing, food, etc.). All of this is taking place in a poor, under-developed country about the size of North Carolina with a population of about three million, half under the age of eighteen. This revolution has been led by the FSLN, the Sandinista National Liberation Front, which also

was the winner in open elections held last November.

For such a small and under-developed country, the radio dial is crowded with about 45 stations broadcasting from Nicaraguan soil and another three or four located just over the border in Honduras and Costa Rica with strong signals that cover the entire country. Of the Nicaraguan stations, about 30 are privately owned by a variety of churches, schools, and businesspeople. The government has its own station (La Voz de Nicaragua), the FSLN has its own station (Radio Sandino), and the Catholic Church hierarchy has its station (Radio Catolica). About 15 stations are part of CORADEP, a network of stations subsidized by the government and roughly similar to National Public Radio in the U.S.

The out-of-country stations are the modern competition and are run by the contras (anti-Sandinista counter-revolutionaries) with U.S. funding or operated directly by the U.S. These stations include Radio 15 de Septiembre, the voice of the main contra group, the FDN, based in Honduras; Radio Impacto, reportedly established with CIA funds and broadcasting from Costa Rica with current U.S. music and slick right wing news; and Radio Costa Rica which shares transmitter

facilities with the Voice of America and transmits news critical of the Sandinistas. The Voice of America station is a 50,000 watt AM transmitter. All of these stations can be heard throughout Nicaragua and try to put forth the "best" of mainstream America in music and news.

The names of the stations we visited were our first clue that we were not seeing your standard top 40 radio: *Radio Insurreccion* in Matagalpa and *Radio Liberacion* in Esteli, both north of Managua, the capital, and in areas where armed contra attacks took place this summer. Both stations are CORADEP members.

Radio Liberacion has a small studio in an old stucco building near the town square and Cathedral in Esteli. The collective that runs the station has about 12 members whose salaries are paid by the government. Programming decisions are made locally. When we met with the staff, they told us that during the fighting that led to the victory of the revolution in 1979, the former owner of the station fled to the U.S. and the employees took over its operation and formed the core of the collective that runs the station now.

Most training of staff members has been on the job, including some training by the Union of Nicaraguan Journalists (UPN). One staff person is

professionally trained, the rest considered themselves amateurs, having learned on the job.

As expected, their programming is designed to appeal to their audience, which consists mostly of people who live in a rural agricultural setting, working on plots raising corn, beans or other vegetables or on larger farms growing tobacco or other export crops. The focus of the programming is on women, workers and youth, which translates into *campesino* (traditional peasant music), news, agricultural production news and reports, educational items, health programs, etc. during the day and more modern music aimed at young people in the evening. Every night there is a Nostalgia Program. The staffers told us they play very little American music because it "stupidifies the listener" and runs counter to the goal of the station of trying to educate young people in the spirit of the Revolution.

The popular Nicaraguan music that is played and is widely available at shops in cassettes and albums ranges from folk to rock, calypso, and reggae, or sometimes a combination of all of these. Often the songs are quite political. Several groups from the East Coast of Nicaragua, which has

continued on page 14

B·A·B·S·D·E·L·A·Y

a Realtor as unique as her name!

SOME GREAT LISTINGS!

ANTI-NUKE HERBALISTS

Cute country cottage on double sized lot in West Murray. Just FHA appraised at \$50,000 — several offers have been made and none have gone through. You could get into this for under \$3000!

YUPPIES

Triplex just below East High School and its zoned for light business ... the "9th and 9th" neighborhood. Lots of hardwood and a great art studio upstairs. Will look at all offers — price just reduced to \$59,000!

DJ STILL NEEDS TO SELL

Assm. FHA loan on this downtown 2 bedroom bungalow on 1 way street. Fireplace, kitchen and bathroom, very small yard, big basement. \$39,900 and payments are the same as rent.

SUGARHOUSE TUDOR

This medium sized home is beautiful inside — big fireplace, professional curtains, earthtone carpets, 4 bedrooms, 2 baths, rec. room. On a big lot with plenty of parking and 1 car garage/shop. Appraisal at \$67,000.



BERE REGIS REALTY (801) 532-1424

"We are what we hear"

PACIFICA RADIO

KRCL Public Affairs Schedule

Compiled by Donna Land Maldonado

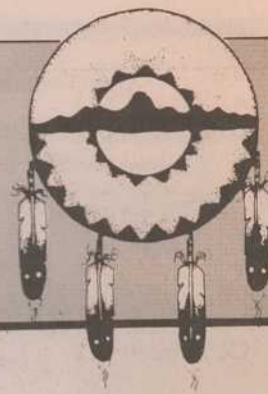
December 1985/January 1986, the Public Affairs dept of KRCL is ending this year of the Ox and starting next year, of the Tiger with lots of good thoughts and hope and several interesting series. Please read through the schedule so you'll know when the different series air. There are too many to highlight, (put in special boxes to catch your eye). But, just to mention a couple of special-interest ones: First, for the months of December, January and part of February, "Consider The Alternatives" will be pre-empted on Wednesday evenings so the series "The Challenge of China and Japan" can be repeated for the evening listeners and second, the mini-series called "Utah's Wetlands," features three programs about a vital link in the eco-system of Utah and will air on P.A. 91 on Thursdays. Look through the guide for the "highlighted" programs. Two are in a documentary format and one is a musical. The musical, "Harlem Hits" will air during DRIVE TIME MAGAZINE on Fridays, from 5 to 6 p.m.. The series fits perfectly in the Professor's program. The other two "highlights" give some additional insight into two particular populations/cultures: the Asian and the Native American. Hearing the history and rationale behind particular concerns and actions can help in understanding. Does that sound like the purpose and intent of KRCL? You bet!!

Lately, there has been some grumbling about the "non-American" music programs. My best reply is: We can't please all of the people all of the time, and we won't even pretend to attempt that impossible feat. We will, however, continue to present those people's/groups/culture's/diverse/unconventional organization's/diverse lifestyles/alternative opinions that are denied air time in the commercial media. Perhaps some people have difficulty listening at certain times because they can't understand what the programmers are saying, because they are not talking "American!" My reply: the U.S.A. was "discovered" by Europeans in 1492. Prior to that time there were languages and music that could not be considered "American" unless, we count the real Americans, the Native Americans. They had languages and music and it wasn't foreign. This may be taking too much space for the few who can't understand why there is ONE ethnic music program at a prime time, but its those that we hear from. I'll gladly speak to anyone about the entire program format, most of the programs were/are intentional, a few accidental, none were forced. Please call me if you do have questions or want to give an opinion.

Have some fun and peaceful holidays and stay tuned to the SOUND ALTERNATIVE for the best that the radio medium has to offer. Cheers, see ya next year.

"In our traditional tongue, there is no word for relocation. To move away [from our sacred lands] means to disappear and never be seen again."

Pauline Whitesinger
Navajo nation, U.S.A.



SUNDAY

First Person Radio
8 a.m.
News, information and perspectives of Native Americans as seen by the Native American.

New Dimensions
9 p.m.

Dec 1: "The Inner Voice," with Dorothy Fadiman
Dec 8: "Steps Along The Path," with Peggy Taylor and Rick Ingrassi, M.D.
Dec 15: "Search For Meaning," with Pir Vilayat Inayat Khan.

Dec 22: "Daily Bread," with Wendell Berry.
Dec 29: "Sustaining The Land," with Wes Jackson.
Jan 5: "Living in the 'C' Zone," with Marilyn and Robert Kriegel.
Jan 12: "Spirit Dance," with Brooke Medicine Eagle.
Jan 19: "Politics for Living," with John Vasconcellos.
Jan 26: "The Quantum Factor," with Fred Alan Wolf.

Music from "The Hearts of Space"
10 p.m.
This show combines the best of the

new electronic and electro-acoustic Spacemusic. It is brought together into lyrical, evocative journeys with minimal commentary. An Ann Turner, Stephan Hill production.

MONDAY

Morning Light
8:30 a.m.
"Consider The Alternatives," a SANE production on alternative notions of today's global concerns.

Our Art
11:30 a.m.
Interviews with local or visiting artists produced by hosts Desiree Mays, Carlie Jimenez or Marilyn Scharine.

Dec 2: Carol Nixon, new Director of the Utah Arts Council.
Dec 9: Maud May Babcock, Reading Arts Society.
Dec 16: Ramses II with Professor C.W. Griggs.
Dec 23: Christmas Readings.
Dec 30: Utah Symphony Youth Concerts.
Jan 6: Promised Valley Playhouse, a new approach.
Jan 13: Operatic words on "Madame Butterfly."
Jan 20: A bibliography on Women's Studies
Jan 27: Brigham Madsen's new book, *Shoshone Frontier and Bear River Massacre*.

Concerning Gays and Lesbians
12 noon
A program to help educate the public on a different lifestyle. Hosts: Mickey & Dean.

Cambridge Forum
12:30 p.m.
A public affairs series that focuses not on the passing headlines but on the more permanent problems, the news behind the news.

P.A. 91
7 p.m.
"Conversations from Wingspread," a free exchange of ideas. Produced by the Johnson Foundation.
Dec 2: "John F. Kennedy"
Dec 9: "The American Public and Soviet Relations"
Dec 16: "Homelessness and the Mentally Ill"
Dec 23: "The American School Teacher and the Quest for Standards"
Dec 30: "Religion and Politics"
Jan 6: "The National Issues Forum"
Jan 13: "The Public Servant"
Jan 20: "American's Allies and America's Defenses"
Jan 27: "Schooling in America"

SHORT FEATURES

Sunday
Women's News 11 a.m.
Wilderness Update 12 p.m.
In the Public Interest 1 p.m.
Environmental Update 3 p.m.
Monday
Environmental Update 10:00 a.m.
Central America Update 11:00 a.m.
In the Public Interest 11:27 a.m.
Byline 3:57 p.m.
Tuesday
Central America Update 7:00 a.m.
Women's News 9:55 a.m.
In the Public Interest 11:27 a.m.
Byline 3:57 p.m.
Wednesday
Nuclear Waste Report 7:00 a.m.
In the Public Interest 11:27 a.m.
Byline 3:57 p.m.
Weekend Entertainment 4:30 p.m.
Thursday
Wilderness Update 7:00 a.m.
Weekend Entertainment 9:30 a.m.

Women's News 10:30 a.m.
In the Public Interest 11:27 a.m.
Byline 3:57 p.m.
Environmental Update 4:30 p.m.
Friday
Weekend Entertainment 7:00 a.m.
In the Public Interest 11:27 a.m.
Byline 3:57 p.m.
Central America Update 6:00 p.m.
Weekend Entertainment 7:30 p.m.
Saturday
Nuclear Waste Report 11:00 a.m.
Weekend Entertainment 12:00 p.m.
In the Public Interest 1:00 p.m.
Daily
Stardate airs at 8 a.m., 5:30 p.m. and 10 p.m.
Morning Light airs at 8:30 a.m.
Monday, "Consider The Alternatives;"
Tuesday, "First Person Radio;"
Wednesday, "Common Ground"
Friday, "In Black America."

Sunspot: energy ideas for the self-reliant



The year's contract for Sunspot with the Utah Energy Office concludes on December 14th of this year. KRCL will rerun the series on a three times per week basis as a part of their regular short features.

The Utah Energy Office would like comments and feedback about the series. You can call the Utah Energy Office at 538-5410 or 1-800-662-3633 or you can write to the Utah Energy Office at 3 Triad Center, Salt Lake City, Utah 84101.

TUESDAY

Morning Light
8:30 a.m.
"First Person Radio"—Native American weekly news.

Community Notes
11:30 a.m.

Dec 3: Museum Notes, with host Terry Tempest talks with Karla Vander Zander, Program Director and Robin Wilson, Executive Director, of the Canyonlands Field Institute.
Dec 10: Working Together, with hosts Shirley Stevens and Karen Bowers.
Dec 17: Community Development
Dec 24: It's the Law with Tineke Van Dyke.
Dec 31: TBA
Jan 7: Museum Notes: "Wasatch Front Lecture Series" with host Terry Tempest Williams.
Jan 14: Working Together with hosts Shirley Stevens and Karen Bowers.
Dec 21: Community Development.
Jan 28: It's the Law with Tineke Van Dyke.

Handicapped
12 noon
Host Linda Reeder talks with those who are or work with the "handicapped."

Enfoque Nacional
1 p.m.
A Spanish national news program en Espanol. A Western Community Bilingual Radio and Radio Bilingual production.

P.A. 91
7 p.m.
"Utah Writers/Utah Voices" produced by Marilyn Scharine, made possible by the Utah State Board of Education.

Dec 3: An interview with Dorothy Solemn.
Dec 10: Dorothy Solemn reads from her book.
Dec 17: Reading by Joanne Harris Allred.
Dec 24: Reading by Anne Schiffrer Firmage.
Dec 31: Reading by Steve Rufus.
Jan 7: Reading by Lorraine Ferra
Jan 14: Lorraine Ferra continues, with Gwen Mojado reciting her poetry the last half.
Jan 21: Reading by Shirley Reed.
Jan 28: Reading by Francois Camion.

WEDNESDAY

Morning Light
8:30 a.m.
"Common Ground," a series on World Affairs produced by the Stanley Foundation.
Dec 4: "The View From the South"
Dec 11: "Hitler and the Holocaust"
Dec 18: "The U.S. Intelligence Community"
Dec 25: "Greenpeace"
Jan 1: "Shopping for Weapons"
Jan 8: "China—The Long March"

Senior Sound-Off
11:30 a.m.
From the Division of Aging: Percy Devine, Marge Drury and Dolly Young rotate in addressing issues and questions on the golden years of life.

Fairmenist Revolution

12 noon
Host Mac Gift explores the consciousness towards humanism, the letting go of stifling habits and attitudes.

P.A. 91
7 p.m.

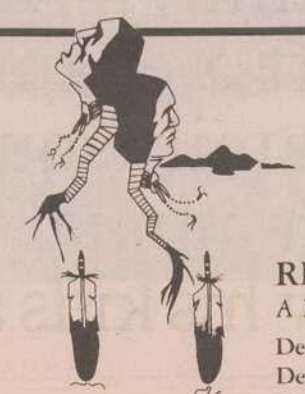
"The Challenge of China and Japan," a series of fifteen that is built around a collection of anthology readings. The program provides important background on the institutional differences between two countries and the groundwork for an informed discussion of the major policy problems currently facing China and Japan. Funded by the Utah Endowment for the Humanities. For information and/or tapes of the series contact Sharon Swenson: 534-1158.
Dec 4: "Japan: Traditions and Transition"
Dec 11: "China Today: The Search for Values"
Dec 18: "China and Japan: Response to the West"
Dec 25: "LDP: The Party that Rules Japan"
Jan 1: "Leadership in Japan?"
Jan 8: "Is There a Japan, Inc.?"
Jan 15: "China: Bureaucracy and Bureaucratism"
Jan 22: "Reforming the Revolution: China's Economic Policy"
Jan 29: "Japan: Free Trade and Protectionism"

THURSDAY

Morning Light
8:30 a.m.

Dec 5: A three part documentary series: Reclaiming the Nations. Part I—"Voices from the Sacred Mountain: The Black Hills, South Dakota."
Dec 12: Reclaiming the Nations, Part II—"Anishinabe: A Second Tragedy at White Earth."
Dec 19: Reclaiming the Nations Part III—"We, the Indigenous: A Global Perspective."
Dec 26: "Merry Christmas: Parang Style." Producer Von Martin takes us to Lopinot, a village in Trinidad for a Christmas celebration.

BAMBOO RADIO, a four part series produced by the National Asian American Telecommunications, N A A T A.
Jan 2: Program I: "Almost Home: Violence Against Asian-Americans"
Jan 9: Program II: "Sweatshop Labor in Chinatown."
Jan 19: Program III: "Korean Small Business"
Jan 23: Program IV: "Indochinatown"
Jan 30: TBA



RECLAIMING THE NATIONS—A Three Part Documentary Series

A Morning Light Special Thursdays at 8:30 a.m.
December 5 Part I VOICES FROM THE SACRED MOUNTAIN: The Black Hills, South Dakota
December 12 Part II ANISHINABE: A Second Tragedy at White Earth
December 19 Part III WE, THE INDIGENOUS: A Global Perspective

Lunch Encounter

11:30 a.m.
Dec 5: "Sister Fire: Roadwork '83" women of Calabash: Ronnie Gilbert, Orquestra Sabrosita, Meg Christian and poet Alexis DeVeaux. One hour.

Dec 12: "Sister Fire: women of the Calabash and Linda Tillery.
Dec 19: Thinking Out Loud: A Logical Education: Ernest Boyer on teaching, TV and human development. produced by Jeffrey Montague.
Dec 26: "Sister Fire:" Teresa Trull, Ronnie Gilbert and Ferron. One hour.
Jan 2: "Sister Fire:" Elizabeth Cotton Cathy Fink, Toshie Reagon and Sweet Honey in the Rock.
Jan 9: Canadian Folklore, Program I: "Dream-quest" Radio Canada International production. Thinking Out Loud "What's in a Chair?" produced by Jeffrey Montague.
Jan 16: Thinking Out Loud "What's in a Chair?" produced by Jeffrey Montague.
Jan 23: Program II (Canadian Folklore) "Devils, Priests and Fiddlers"
Jan 30: Program III (Canadian Folklore) "Wood and Water, Wildfowl and Game"

New Dimensions Radio
12:30 p.m.
A rebroadcast of Sunday's 9 p.m. program.

Totally Wired
1:30 p.m.
"Totally Wired," presents artists in electronic sound as they explore the musical development of the global village. A John Diliberto and Kimberly Haas production.

P.A. 91
7 p.m.
Dec 5: Thinking Out Loud: "A Logical Education:" Ernest Boyer on teaching, TV and human development
Dec 12: "Utah's Wetlands" a series of three programs exploring the status and importance of this threatened resource. The programs focus on the historical, ecological and philosophical issues raised to wetlands and the management. Produced by radio station KUSU-FM, funded by the Utah Endent for the Humanities, the Utah Division of Wildlife and Utah State University.
Program I: "How the Loss Affects Wildlife, the Human Use and Future Management Options."

Dec 19: "Hiroshima Countdown: 40 Years in the Nuclear Age." Producer: Andrew Phillips.
Dec 20: TBA
Dec 27: "Out of the Darkness" the peace movement: interviews with Pete Seeger, Holly Near, Cris Williamson and others. One hour.
Jan 3: TBA
Jan 10: "Martin Luther King: The Prolonged Dream" NPR production.
Jan 17: "The Hidden Radical Dimensions of Dr. Martin Luther King, Jr." One hour.
Jan 24: TBA
Jan 31: TBA
Lunch Encounter
12 noon
Dec 6: "Hiroshima" continues.
Dec 13: Utah Issues with Bill Walsh.
Dec 20: TBA
Dec 27: "Darkness" continues
Jan 3: TBA
Jan 10: Utah Issues with Bill Walsh.
Jan 17: "Hidden Dimensions" continues.
La Voz De La Gente
Host Robert Michael Archuleta with different guests about issues, concerns, activities and interests of the local Hispanic community.

Dec 19: Part II: "The Development of Water in the Lower Bear River Basin"
Dec 26: Part III: "Looking at the Value of Wetlands and Examining Methods for the Preservation and Use."
Jan 2: Thinking Out Loud: "What's in a Chair?" Produced by Jeffrey Montague.
Jan 9: Voices in Exile, stories of Salvadoran refugees.
Program I: "Inside the Volcano."
Jan 16: Voices, Program II: "North of the Border."
Jan 23: Voices, Program III: "In Search of Asylum."
Jan 30: Voices, Program IV: "Sanctuary."

FRIDAY

Morning Light
8:30 a.m.
"In Black America," views and insights of today's society through the eyes of black America.

Lunch Encounter
11:30 a.m.
Dec 6: "Hiroshima Countdown: 40 Years in the Nuclear Age." Producer: Andrew Phillips.
Dec 13: TBA
Dec 20: TBA
Dec 27: "Out of the Darkness" the peace movement: interviews with Pete Seeger, Holly Near, Cris Williamson and others. One hour.

Jan 3: TBA
Jan 10: "Martin Luther King: The Prolonged Dream" NPR production.
Jan 17: "The Hidden Radical Dimensions of Dr. Martin Luther King, Jr." One hour.
Jan 24: TBA
Jan 31: TBA

Lunch Encounter
12 noon
Dec 6: "Hiroshima" continues.
Dec 13: Utah Issues with Bill Walsh.
Dec 20: TBA
Dec 27: "Darkness" continues
Jan 3: TBA
Jan 10: Utah Issues with Bill Walsh.
Jan 17: "Hidden Dimensions" continues.

La Voz De La Gente
Host Robert Michael Archuleta with different guests about issues, concerns, activities and interests of the local Hispanic community.

"Land is sacred, and religious freedom says that sacred land and Indian people are one."

Leonard Crow Dog
Lakota-Sioux, U.S.A.

A Time For Helping



Sue, a 25-year-old single parent of three, has reason to be optimistic these days: a new job and continued public assistance means her income has doubled from its \$450 a month level so that now, she says, she can buy herself a pair of shoes without feeling guilty because her family won't be able to eat.

Sue, who lives in a low-income housing unit in Magna, plans to be off welfare altogether in a short time but it's unlikely she will soon forget the tough times she has experienced as one of more than 200,000 Utahns living below the poverty level, calculated by the government to be \$10,610 for a family of four. Tough times like the moment when Sue's eight-year-old son, Charlie, walked into the kitchen, as million of American children do everyday, expecting to get something to eat and Sue was forced to explain to her son that the family's cupboards and refrigerator shelves were empty.

"He just looked at me and goes, 'But I'm hungry Mom,'" Sue says. "These big tears came into his eyes and I just looked at him and said 'Honey, I'm sorry but there's nothing to eat in the house.'"

The number of poor people in the United States has increased by about 10 million since 1978, according to Census Bureau figures, with a larger number of those poor estimated to be living further below the poverty level than before. As federal outlays for food and nutrition programs have been tightened under the Reagan administration, the *New York Times Magazine* reports there are more soup kitchens serving more meals to more people than at any time since the Great Depression.

"When you're poor," says Steve Johnson, director of Utahns Against Hunger, "you can't cut certain expenses like utility bills and rent but you do have some discretion with

what you pay for medical care and food. It follows then that many of Utah's poor are going hungry, suffering periodic food shortages—or, if you prefer a less dramatic expression of the problem—they are at "nutritional risk."

"Sometimes what is called hunger in America means 'going hungry,' in the sense of frequently missing meals," writes author Joseph Lelyveld, who visited families across the nation recently to find out what was left of the social safety net five years after the Reagan revolution began. "More often (hunger) means being chronically anxious about food because you are eating less than you believe you should and, episodically, perhaps every few weeks, don't know where your next meal is coming from."

Cathy Hoskins, director of operations for the Community Action Program (CAP) in Salt Lake City, says it would be ideal if the hungry and impoverished could go to one place to receive the help they need, but demands currently outweigh resources at any one place. CAP is teaming up with KRCL-FM this holiday season to sponsor the community radio station's fourth annual food drive in which listeners are encouraged to donate non-perishable, commercially canned foods. (State law prohibits organizations from accepting home-canned items.)

The drive may only make a small dent in the insidious problem of hunger in a nation which habitually discards one-fifth of its food, but, as Hoskins says, "You can't just walk away from the problem once you've seen what goes on."

The KRCL studio, located at 208 West 800 South, welcomes contributions 24 hours a day. Canned fruits and vegetables, soup, dry beans, rice, pasta and fruit juices are always needed.

BY MARILYN ABILOSKOV

The father [of a poor family] whose injuries from an accident set off a chain of fatal events that placed his family squarely in the pit of poverty, made an annual salary of \$35,000 a year ago. Now his kids are hungry. But who's to blame?

The most persistent perception of the impoverished... is that somehow it's the poor's own fault for being poor.

Please join us in our Fourth Annual Food Drive to help those less fortunate. Let us all make these holidays a season of abundance and joy for everyone.

"Baby food and disposable diapers are also precious commodities," Hoskins says. So are personal items like soap and deodorant. And can openers. The 20-year veteran of community work describes how difficult it was recently to meet the needs of a family of five who was living out of a car after the father became disabled in an accident and lost his job. Canned beans didn't mean much to a family lacking basic necessities like a can opener and access to a stove.

"We don't turn any donations away," Hoskins says, after receiving an encouraging telephone call at her office, which is adjacent to the KRCL studio: a man from out of state whose mother recently died in a Salt Lake City hospital called to see if Hoskins knew of someone who could use a house full of furniture left by the elderly woman.

If the KRCL studio is an inconvenient place to deliver food contributions, call the station at 363-5725 to find out the locations of other social service agencies or see the station's accompanying list.

John Greene, KRCL station manager, says the purpose of the food drive is not to make people feel bad during the holiday season. "Is KRCL the purveyor of bad news? I don't think so," he says. "But we do want to heighten awareness of a problem that is evident all year long and give people an opportunity to make their holiday season better. Christmastime seems to be an effective period to rally people to the cause of alleviating hunger in their communities."

Some of us who are well-fed inevitably become uneasy when the subjects of hunger and poverty pop up

in the context of our own neighborhoods. We find it easier to write a check to feed some of the thousands of starving African children whose dramatic stories cry out for action than to face our own poor, who, as columnist Meg Greenfield put it, "are always a disappointment to the imagination, being neither uniformly unassuming and grateful like Mrs. Cratchit nor uniformly grasping and ghastly like your classic welfare-cheater queen."

There are also some of us who mask our discomfort by blaming the greed of those around us or by espousing intellectual arguments from our comfortable living rooms that momentarily ease our guilt but do nothing to fill empty stomachs.

But the fact remains that poverty—with hunger close at its heels—has filtered into communities all over Utah. And the groups hit hardest, across the nation and close to home, are women and children.

Consider the observations of two local experts along with some national statistics:

- Hoskins says the numbers of people who visit CAP food pantries has tripled since 1981 when the federal government began pressuring the state agencies to minimize their "error rates" or clamp down on eligibility requirements.

- In addition, Hoskins says her organization turned away 4,000 people last month from its mass distribution lines. Large quantities of commodities such as cheese, butter, rice and milk provided by the federal government were cut in half two years ago, which may account for the increase in numbers of people who rely on emergency food pantries. "A five-

pound brick of cheese can go a long way, you know," Hoskins says.

- Steve Johnson from Utahns Against Hunger says the organization he represents has had to become more involved in generating private food donations in recent years than in advocacy work because so many of the state's residents are showing more severe symptoms of poverty than ever before.

- Some of those symptoms may be exacerbated by inequities in the tax code: Nationally, the tax burden for a family of four at the poverty line rose from 4 percent of income in 1978 to 10 percent in 1983. (The good news is that the House Ways and Means Committee in November approved a tax-reform plan that, if passed, will wipe out taxes for most people below the poverty line.)

- Johnson observes that the number of Utahns living below the poverty level has increased by about 40 percent since 1978, which means residents of this state are hardly immune from widespread problems of hunger.

- Thirteen percent of the state's population live in poverty, with women and children making up a full 70 percent of that group. Women in Utah tend to marry and have children when they are young and frequently uneducated, which puts them at risk economically when divorce occurs and the number of potential family earners is halved. One expert said that the average displaced homemaker in the United States is in her 40s while in Utah, she is in her mid-20s. Nationally, about 13.8 million, or 22 percent of Americans under the age of 18 live in poverty, up almost 8 percent since

1969.

- Another change since 1969 is this: As the poverty rate for children has grown, the value of payments from the government's main welfare program, Aid to Families With Dependent Children (AFDC), has fallen by one third. More than 2 million children are living in poverty despite the fact that a least one adult in the family holds a full-time job, which means talk of a new generation of poor youths in America has become reality.

Commercially canned foods can be delivered to the KRCL studio at 208 West 800 South any time, day or night or to any of the entities listed below. If you're not sure where to drop off your canned goods or how to go about making a contribution, call the KRCL studio (363-5725) or the Information and Referral Center (487-4716) from 8 a.m. to 5 p.m. for further information.

continued on page 19



Thinking Out Loud
THE UTAH HUMANITIES RADIO PROJECT

Hear "A Logical Education" and "What's in a Chair?" on *Thinking Out Loud*, first Thursday at 7 p.m. and third Thursday at 11:30 a.m.
A project of the Utah Endowment for the Humanities.

Thanks

謝謝 5555555555 merci Faka Faka Gracias Salamatu 292929 Ahe'hee Cate on Malo ETXAPICTO Thank you!

Editor's Note: KRCL is always in the mood to thank someone for their kind support. Because of our multilingual audience, we want to thank all our listeners in just some of the languages spoken on KRCL. From left to right: Chinese, Cambodian, French Samoan, Spanish, Philippine, Laotian, Navaho, Vietnamese, Tongan, Greek and did you guess? English.

Thanks to our underwriters

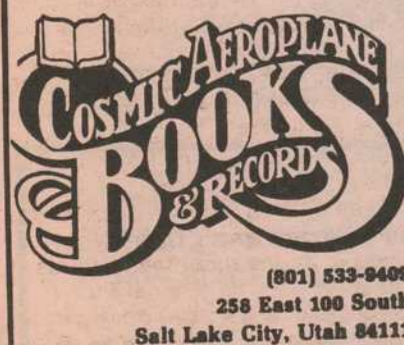
Underwriting a show, a public affairs program or a short feature is a way for businesses or individuals to provide financial support for KRCL. Because KRCL is non-commercial, the monies donated are tax deductible. In exchange for the donation, KRCL broadcasts a brief message which is descriptive in nature and non-promotional. The message is a means for KRCL to recognize this valuable contribution.

Underwriting is an extremely important layer of financial support for the station. Approximately 15 percent of the current budget is derived from underwriting. The goal is to raise that level to 25 percent.

If you are interested in underwriting a program, please call 363-1818 during working hours and a packet of information will be sent to you. If you are a listener, please support our underwriters.



Cosmic Aeroplane still buys and sells used books and records. We pay top dollar for entire collections, sets and individual items. Please call or stop by if we can be of service to you.



- Acoustic Music**
857 East 400 South
Salt Lake City
- Brighton Ski Touring**
Brighton
- Cabin Fever**
66 West 400 South
Salt Lake City
- Carpet Barn**
3725 Redwood Road
West Valley City
- Casa Del Sol**
300 Trolley Square
Salt Lake City
- Catalyst Magazine**
Salt Lake City
- Clayton Oriental Rugs**
1464 Foothill Drive
Salt Lake City
- Cosmic Aeroplane**
258 East 100 South
Salt Lake City
- Coyote Bills**
206 South West Temple
Salt Lake City
- D. B. Coopers**
19 East 200 South
Salt Lake City
- Gardiner Distributing**
554 West 100 South
Salt Lake City
- Harvey's**
206 South West Temple
Salt Lake City
- Hey Now Communications**
P.O. Box 510312
Salt Lake City
- In The Mood**
750 East 900 South
Salt Lake City
- Intermountain Guitar and Banjo**
712 East 100 South
Salt Lake City
- Memory, Inc.**
1214 Wilmington, Suite 102
Salt Lake City
- Painted Word**
401 South 400 West
Salt Lake City
- Performance Audio**
2358 South Main Street
Salt Lake City
- Phillips Gallery**
444 East 2nd South
Salt Lake City
- REI**
Brickyard Plaza
Salt Lake City
- Rio Grande Cafe**
270 South 455 West
Salt Lake City

- Salt Lake Roasting Company**
249 East 400 South
Salt Lake City
- Skip Schmielt Photo**
740 West 1700 South
Salt Lake City
- Smokey's Records**
1515 South 1500 East
Salt Lake City
- Snowbird Corporation**
Snowbird
- Sundance**
Provo Canyon, Utah
- Utah Endowment for the Humanities**
10 West Broadway
Salt Lake City

- Utah Museum of Natural History**
University of Utah
Salt Lake City
- Wagstaff Music**
206 East 6400 South
Murray
- Wasatch Touring**
702 East 100 South
Salt Lake City
- Yengich, Rich, Zaix and Metos**
72 East 400 South
Salt Lake City
- The Zephyr**
301 South West Temple
Salt Lake City

Please support our Underwriters

ATTENTION!

Grateful Dead Fans

Live

From the West Coast

KRCL

Will Broadcast the Grateful Dead Concert

on

New Year's Eve

11 p.m. — 3 a.m.

Night Cap

BY JOHN PAUL BROPHY

Like an oasis in the broadcasting desert, listener-sponsored non-profit, community radio, KRCL, has successfully managed to remain a viable alternative to commercial programming for over five years now. One of the main reasons for this longevity is the unique mix of music available on a 24-hour basis, a format that has banished the small-town adage "nothing changes around here but the weather." Indeed, the change of programming that occurs on the average of every two hours is a real indication of the true community appeal of KRCL, and that appeal is grounded in the other main ingredient of KRCL's success—the myriad of volunteers who donate their time and effort, with their own radio programs that are as unique as the individuals themselves.

Weeknights from 9:30 through 11:30 p.m. (9-11 p.m. on Friday) constitute the late night cap of the "prime time" segment of the station's programming. In order to give KRCL listeners a glimpse of the faces behind those disembodied voices responsible for the shows in that time slot, the following "thumbnail sketches" are provided; not that any of these guys are "all thumbs" when it comes to presenting their personal favorite musical tastes each week.

Just the Blooze—Host Dave Spencer
No, it's not a case of poor spelling—the show's name is taken from a vintage Robert Crumb illustration (creator of the legendary Zap Comix), which should give a clue to Dave Spencer's cultural origins. A guitarist weaned on the music of great rock players of the late sixties, Spencer got curious while reading the names of the songwriters on the labels of Cream, Led Zeppelin, and Jeff Beck records and decided to investigate the likes of Chester Burnett, Ellis McDaniel and McKinley Morganfield; plus, the discovery of the great Howlin' Wolf, Bo Diddley and Muddy Waters put Dave onto a lifetime passion for the blues.

Now in his fourth year, Dave Spencer inherited his time slot when he took over Smokey's Blues Hour, the show Smokey Koelsch had in KRCL's first days. From his search for records at Smokey's store, a friendship developed and Smokey asked Dave to take over when he left KRCL to devote more time to his business.

Dave takes pride in presenting new blues music on his show. The playlist is the result of his continual search for music of contemporary bluesmen. The "ceremony of finding records," as he puts it, has given Spencer a first rate record collection that is a welcome addition to KRCL's own library.

Dave has a hard time deciding which is his favorite thing about KRCL—the music or the incredibly kind and helpful people involved. I, too, would have to agree with that assessment and Dave Spencer compounds that difficulty with his own friendly self and his selection of the

newest of blues tunes for the pleasure of all who tune into "Just the Blooze."

Beat Crazy—Host Andy Trauba
This hardworking student came to KRCL through first listening to the station and by knowing a few of the volunteers. Focusing on the beginnings of new wave music, Trauba took his love of the music of artists like Joe Jackson and Elvis Costello and turned it into an excellent showcase for the start of that genre.

Andy has been at his present slot for a little over a year. Beat Crazy first saw the light of day in the wee hours from 3:00 to 6:00 a.m. before moving to its present time, and originally was a dual effort between Andy and his friend, Ken Meyer. (Meyer formerly hosted an afternoon program, Menage A Musique, after his work with Beat Crazy, and has recently acquired Joel Knuth's 11:30 p.m. Monday slot).

Andy Trauba directs his presentation toward providing something new and exciting, and credits the folks at Cosmic Aeroplane for the loan of many of the records he spins on his show.

Night Vinyl—Host Dave Jacobs
This rock 'n' roller prides himself on being part of the "second wave" of volunteers to KRCL way back at the station's beginnings. Jacobs was spinning his dial one day (a common practice among Utah's music lovers prior to 1980) when he first discovered the signal from 91 megahertz. Hearing the need for volunteer help, Dave heeded the call and spent his first year doing behind-the-scenes station work as well as public service announcements (PSAs). Jacobs' first show was a Breakfast Jam before he took over a latenight program from Kathy Eccles.

Dave Jacobs likes his current spot quiet a lot, saying his time frame covers an interesting transitional audience—the shift change of different working types. He feels the disc jockey role to be one of bringing people enjoyment and he loves to introduce people to a variety of rock music. A fan of "crazy D.J.s," Dave Jacobs is having a great time, encouraged by good support from many regular listeners.

Fret 'n' Fiddle—Hosts Mark Cantor/Lewis Downey/Pete Tinker/Paul Truex
Mark Cantor was initially asked to take the show by the staff at Acoustic Music, no doubt due to his expertise in the field of traditional music from years of playing with the band, Sagebrush Cotillion, (the first group to broadcast live on KRCL in that tiny studio the station had above the Blue Mouse).

Teamed with technical wizard and chief engineer Lewis Downey (of "Lewis is on the mountain with his exciter" fame), the original Fret 'n' Fiddle show was a three hour slot with Cantor alternating host duties. Mark focused primarily on interviews with Lewis performing as his usual technical self. With both Cantor and

continued on page 12

Sunday

6 to 7 a.m.
Scoba Dooba
 (continues from Saturday)
 Hamamoto presents an assortment of oddities and niceties during the wee hours.

7 to 10 a.m.
Living The Circle of Life
 Jim Bilagody with Native American music, news and information. (Donna Land hosts the first Sunday of each month.)

10 a.m. to 2 p.m.
Sagebrush Serenade
 Music to ease you from your morning cup through your Sunday afternoon. Manageable folk & rock with a country flavor with Rick Summers. Natalie Atherton sits in once a month.

2 to 5 p.m.
Bluegrass Express
 Join the Flinners—Papa Bob and sons Matt and Rex—for the best in bluegrass, music that is at the root of a lot of the country and folk tunes popular today.

5 to 6 p.m.
Greek Hour
 John Shilaos and Mike Katsan host.

6 to 7 p.m.
Voice of Polynesia
 Music and information from the Pacific islands.

7 to 9 p.m.
Nexus
 New Age Music with John Schellinger.

9 to 10 p.m.
New Dimensions

10 to 11 p.m.
Hearts of Space
 The best of the new electronic and electro-acoustic space music.

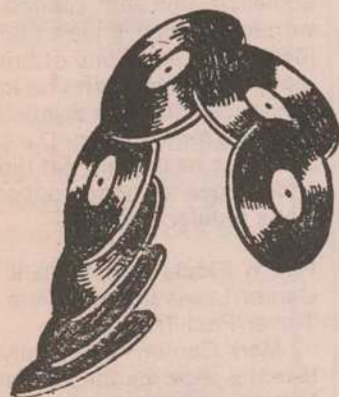
11 p.m. to 1 a.m.



Tentacles
 Unique music from the avant garde, including jazz, new wave, rock and electronic, with host Kurt Setzler.

1 to 3 a.m.
Grand Larceny
 Rock just this side of the Blues to steal away those early morning hours. Your host Alan Sherwood.

3 to 6 a.m.
Broken Mirrors
 Your hosts Click Dark & Slightly Twisted pump literary intrigue into the bloodstream of high energy Rock 'n Roll to create a method to their madness.



Monday

6 to 8:30 a.m.
Breakfast Jam
 A mix of country, folk, rock and a sprinkling of blues—goes down well with coffee and toast. Host: Lisa Mace.

8:30 to 9 a.m.
Morning Light
 "Consider the Alternatives"—global concerns.

9 to 11:30 a.m.
Le Cafe Folk
 Contemporary folk music with a touch of tradition hosted by Donna.

11:30 a.m. to 12 noon
Our Art
 With Marilyn Sharine, Carlie Jimenez or Desiree Mays.

12 noon to 12:30 p.m.
Concerning Gays & Lesbians
 With Mickey & Dean.

12:30 to 1 p.m.
Cambridge Forum
 Public affairs that focuses not on passing headlines but on the more permanent problems—the news behind the news.

1 to 2 p.m.
Reggae Beat
 Hosts Roger Steffens and Hank Holmes present the best in new releases, yet to be released studio recordings, information and interviews with reggae artists.



2 to 4 p.m.
Radio Libre
 Popular music from the French-speaking world, plus news of the French community (with English subtitles). Hosted by Brad Charon and Frank Goodbold.

4 to 6:30 p.m.
Drive Time Magazine
 Lynne Van Dam and John Greene alternate as hosts, each with an eclectic blend of rock, sweet sounds and important information. Note the segues.

6:30 to 7 p.m.
Pacifica News

7 to 7:30 p.m.
Conversations from Wingspread

7:30 to 9:30 p.m.
Great Basin Blues
 The best in Blues, N.Y. to L.A., Texas to Chicago. Blow away them good old Monday Blues, with your host Brian Kelm.

9:30 to 11:30 p.m.
Just The Blooze
 Blues continue into the evening with Dave Spencer.

11:30 p.m. to 1:30 a.m.
Audio Gymnastics
 Join host Ken Meyer as he bridges sounds from the blues to eclectic rock... everything and anything from the old to the new.

1:30 to 3:30 a.m.
The Grab Bag
 Join host Ed Bagley for a pleasant mix of rock from the Sixties, Seventies and Eighties; chosen at random from the grab bag.

3:30 to 6 a.m.
Celestial Seasonings
 Spice your early morning with a gentle mix of music from folk to rock, served by your host Terinell Pelley.



Tuesday

6 to 8:30 a.m.
Breakfast Jam
 Contemporary and mainstream jazz mixed with light rock to suit your morning mood. Hosted by Tom Blackwood.

8:30 to 9 a.m.
Morning Light
 "First Person Radio"—Native American weekly news.

9 to 11:30 a.m.
Women or Nothing
 Music and information from a woman's perspective—that of Julie Lueders.

11:30 a.m. to 12 noon
Community Notes
 Rotates among Terry Tempest Williams, Shirley Stevens and Karen Bowers, Primitivo (nationally produced), and representatives of Utah Legal Services.

12 noon to 12:30 p.m.
Handicapped
 With your host Linda Reeder.

12:30 to 2 p.m.
La Voz Del Pueblo
 Music for the people with Enfoque Nacional at 1:00 p.m. in Spanish. Host—Omel Contreras.

2 to 4 p.m.
Menage A Musique
 An eclectic mix of music for those who like it a bit less conventional. A musical session that won't always leave you in the same old position. Hosted by Bruce.

4 to 6:30 p.m.
Drive Time Magazine
 Dan Maryon picks up your drive with rhythm—reggae and ska plus—as he informs you of local happenings.

6:30 to 7 p.m.
Pacifica News

7 to 7:30 p.m.
Radio Arts

7:30 to 9:30 p.m.
Generic Radio
 Not really. The playlist reads: reggae, new wave, rockabilly and new music. Programmed by Barb Guy.

9:30 to 11:30 p.m.
Beat Crazy
 Starting off with a scream—new wave and assorted nuts with Andy Trauba. So, c'mon cats! Let's go beat crazy!

11:30 p.m. to 1:30 a.m.
Mission Impossible
 The agents: George Alex and Bob Bedore. The mission: to play two hours of progressive music. Impossible?

1:30 to 3:30 a.m.
Winds of the Old Days
 Folksy, bluesy rock... get out your incense candles. Hosted by Sarah.

3:30 to 6:00 a.m.
Beat The Rooster
 Join Dave Bowyer or Brent Burdette each week for a fine blend of true rock, comedy and trivia.



Wednesday

6 to 8:30 a.m.
Breakfast Jam
 Jim Shelton or Eric Kingston will make waking a pleasure with a blend of jazz and folk music designed for the morning.

8:30 to 9 a.m.
Morning Light
 "Common Ground"—international issues.

9 to 11:30 a.m.
Jazz Quart
 Mike Anderson helps you appreciate jazz. Nothing to indicate it's midweek or midmorning—just good jazz.

11:30 a.m. to 12 noon
Senior Sound Off
 With Dolly Young, Percy Devine or Marj Drury.

12 noon to 12:30 p.m.
Fairmenist Revolution
 With Mack Gift.

12:30 to 2 p.m.
Sojourns
 International contemporary and traditional music.

2 to 4 p.m.
Solo Flight
 Host Nick Gioello emphasizes the art of guitar music: solo and lead, acoustic and electric.

4 to 6:30 p.m.
Drive Time Magazine
 Babs DeLay focuses all her energy into a tight mix, with dance music, Weekend Entertainment and issues.



6:30 to 7 p.m.
Pacifica News

7 to 7:30 p.m.
Consider The Alternatives
 Global concerns.

7:30 to 9:30 p.m.
Aural Decay
 Old rock and new rock, accentuated with rockabilly, reggae and whatever is handy. Hosted by Dave Santivasi. It may be habit-forming.

9:30 to 11:30 p.m.
Night Vinyl
 Host Dave Jacobs combines a blend of 60s & 70s rock & folk classics rounded out with the latest additions to bring you a tasty way to end a Wednesday.

11:30 to 1:30 a.m.
Altered States
 Dave Iverson serves as tour guide for exploring acoustic, electric and keyboard oriented rock plus other oddities just for fun.

1:30 to 3:30 a.m.
 Glenn Keister hosts an eclectic rock program that spans a few decades, while keeping you mindful of the sounds of reggae.

3:30 to 6 a.m.
Eternity Spins
 Songs of troubadours, prophets, seers and sages, in a variety of rock styles, bound together with the spirit of magic and adventure. Hosted by Blue Embers.

Thursday

6 to 8:30 a.m.
Breakfast Jam
 Ease into the morning with blends of rock, folk, jazz and other assorted goodies with your host Jerry Schmidt.

8:30 to 9 a.m.
Morning Light
 "The Third World"

9 to 11:30 a.m.
This Feminine Position
 Maggie Laun or Cindy Adams bring you music by & for women. Interviews at 10:00 on a wide variety of topics pertinent to women.

11:30 to 12:30 p.m.
Lunch Encounter
 Local, national and international public affairs.

12:30 to 1:30 p.m.
New Dimensions Radio
 Refer to Public Affairs schedule.

1:30 to 2:00 p.m.
Totally Wired
 Refer to Public Affairs schedule.

2 to 4 p.m.
Daydreams
 Mark Jackman presents intricate patterns of sound, which are designed to enhance your daytime environment, woven from electronic, experimental and other alternative musical forms.

4 to 6:30 p.m.
Drive Time Magazine
 Host Perry Shepard

6:30 to 7 p.m.
Pacifica News

7 to 7:30 p.m.
Political Issues

7:30 to 9:30 p.m.
Musica Latina
 Presented by Elena Gonzales featuring Latin music in a variety of genres from the South American traditional flutes to the American Latin pop scene.

9:30 to 11:30 p.m.
Fret 'N Fiddle
 Traditional folk music from here and abroad, depending on your host, who could be Lewis Downey, Pete Tinker, Paul Truex or Mark Cantor. You'll get a variety.

11:30 p.m. to 1:30 a.m.
Utah—Slavia
 Utah's eastern Europe heritage lives! Proving the beauty of diversity we focus on the music of Yugoslavia, provided by Mladen Maric, Craig Miller and friends.

1:30 to 3:30 a.m.
Mr. Baggin's Show
 Join host Dan Benaducci as he spins the early morning rock 'n roll with a smile.

3:30 to 6:00 a.m.
Funtime
 Rock 'n roll... funtime on KRCL with host John Dean.



Friday

6 to 8:30 a.m.
Breakfast Jam
 Motown, R & B, soul, blues and jazz—music to make you move. Hosted by George R.

8:30 to 9 a.m.
Morning Light
 "In Black America"

9 to 11:30 a.m.
Attitude Adjustment Session
 Chuck Bradley does some soul adjustment to get you ready for the weekend.

11:30 a.m. to 12:30 p.m.
Lunch Encounter
 Local, national and international public affairs.

12:30 to 1 p.m.
La Voz de la Gente
 Host Robert Archuleta

1 to 2 p.m.
S.O.A.P.
 Sounds of a party. From mellow-soul to scratching. First Friday of each month, listen for the top five soul hits, with host Sam Smith.

2 to 4 p.m.
Latin Connection
 Latin jazz, salsa, Latin rock with some old rhythm & blues thrown in—the entire connection with host Robert Velasquez.

4 to 6:30 p.m.
Drive Time Magazine
 Professor of R & B, Larry Ficks, presents rhythm and blues, old rock and roll, and social issues.

6:30 to 7 p.m.
Pacifica News

7 to 9 p.m.
KRCL Jukebox
 Inspector Bill Komlos brings you music from the 50s, 60s and 70s to blow your mind, but not your cool!

9 to 11 p.m.
The G Men
 The most arresting rock music to be found. Hosts Chris Gittins and Hugh Garner

11 p.m. to 2 a.m.
Revolutions
 Andy Langton brings a mix of classic rock and roll, Grateful Dead, and Avant Garde.

2 to 4 a.m.
Variables
 Electronic, holistic, new age music brought to you by Thom Odom & Eric Gisler.

4 to 6 a.m.
Gospel Connection
 Contemporary gospel that encompasses all categories of music. Tune in to Carol and Marvin Dixon for your early morning start.

Saturday

6 to 7 a.m.
Gospel Connection
 (continues from Friday)
 Carol and Marvin Dixon are still going strong with more gospel.

7 to 10 a.m.
Asian Chimes
 Music and information from the communities of Cambodia, Thailand, the Philippines, China and Viet Nam. Presented by hosts Chara Souratha, Vic Fernandez, Darrell Young and Hang Nguyen.

10 a.m. to 2 p.m.
Sagebrush Serenade
 From the best known to the least known rock artists of the Sixties, don't miss "one of KRCL's best" with Dale Carlson.

2 to 5 p.m.
Smile Jamaica
 Reggae—the roots, as well as current releases. Join Myron Fairbanks, Jah music. An added bonus, "Reggae Beat," from the archives of reggae.

5 to 7 p.m.
American Music
 Genre: Rockabilly. Intent: Pure Entertainment. Hosts: Robert Moss and Violet Ruybal.

7 to 9 p.m.
PhonoSynthesis
 Host Jon Bray offers the latest in new wave, rockabilly, punk and dance music.

9 to 11 p.m.
No Guarantee
 Noise punk, avant rock, avant punk. But, no guarantee. Host Ron Ward.

11 p.m. to 3 a.m.
Behind The Zion Curtain
 Synthetic, authentic punk—hard core! Brad Collins is the guilty one who cracks your Saturday nights and Sunday morns with the sounds of the new wave.

3 to 5 a.m.
The Nightmare Continues
 Kanga and Ray host the best of underground metal and punk to break down mindless barriers.

5 to 6 a.m.
Scoba Dooba
 Hamamoto presents an assortment of oddities and niceties during these wee hours.

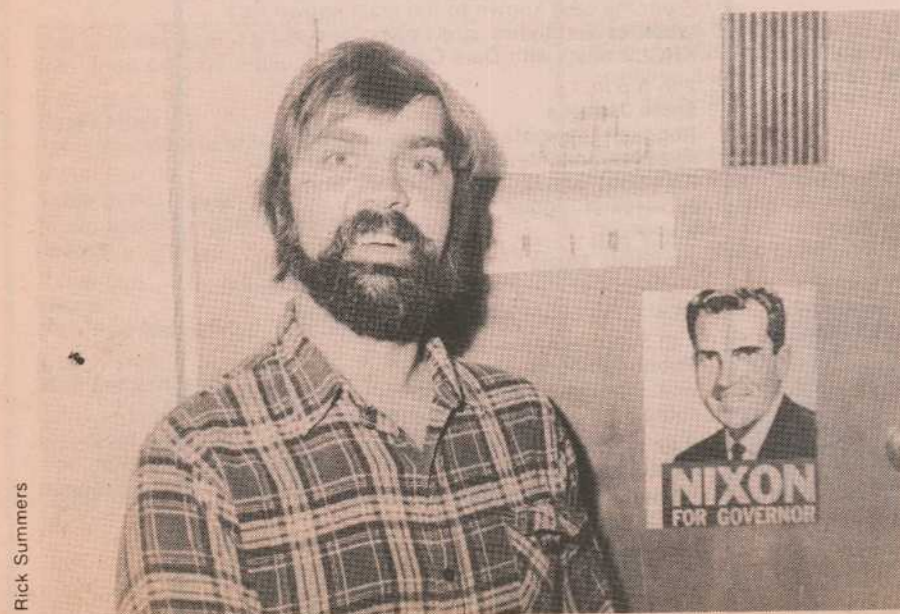
Program schedule

	SUNDAY	MONDAY	TUESDAY	WEDNESDAY	THURSDAY	FRIDAY	SATURDAY
6 a.m.	Scoba Dooba						Gospel Connection
7 a.m.		Breakfast Jam	Breakfast Jam	Breakfast Jam	Breakfast Jam	Breakfast Jam	
8 a.m.	Living The Circle Of Life	Morning Light	Morning Light	Morning Light	Morning Light	Morning Light	Asian Chimes
9 a.m.		Le Cafe Folk	Women Or Nothing	Jazz Quart	This Feminine Position	Attitude Adjustment Session	
10 a.m.							
11 a.m.		Our Art	Community Notes	Senior Sound Off	Lunch Encounter	Lunch Encounter	Sagebrush Serenade
12 p.m.	Sagebrush Serenade	Concerning Gays	Handicapped	Fairmenist Revolution			
1 p.m.		Cambridge Forum			New Dimensions	La Voz de la Gente	
2 p.m.		Reggae Beat	La Voz Del Pueblo	Sojourns	Totally Wired	S.O.A.P.	
3 p.m.		Radio Libre	Menage Musique	Solo Flight	Daydreams	Latin Connection	Smile Jamaica
4 p.m.	Bluegrass Express						
5 p.m.		Drive Time Magazine	Drive Time Magazine	Drive Time Magazine	Drive Time Magazine	Drive Time Magazine	American Music
6 p.m.	Greek Hour						
7 p.m.	Voice Of Polynesia	Pacifica News	Pacifica News	Pacifica News	Pacifica News	Pacifica News	
8 p.m.		Wingspread	Radio Arts	Consider The Alternatives			KRCL Jukebox
9 p.m.	Nexus	Great Basin Blues	Generic Radio	Aural Decay	Musica Latina		
10 p.m.	New Dimensions						
11 p.m.	"Hearts of Space"	Just The Blooze	Beat Crazy	Night Vinyl	Fret 'N Fiddle	The G Men	No Guarantee
12 a.m.	Tentacles						
1 a.m.		Audio Gym	Mission Impossible	Altered States	Utah-Slavia	Dead Air	Behind The Zion Curtain
2 a.m.	Grand Larceny						
3 a.m.		The Grab Bag	Winds of the Old Days	Music	Mr. Baggin's Show	Variables	The Nightmare Continues
4 a.m.							
5 a.m.	Broken Mirrors	Celestial Seasonings	Beat The Rooster	Eternity	Fun Time	Gospel Connection	Scoba Dooba
6 a.m.							

Program guide

A Ceremony of Finding Records

Dave Jacobs



Rick Summers

Downey working often out of the area, and with a desire not to exhaust the traditional music resources as well as to include a little "new blood" in the format, the decision was made to add Paul Truex to the line-up. Truex was a logical choice, as he also was a member of the Sagebrush Cotillion.

Soon it became apparent that if three was company, then four could be corporation; thus, Pete Tinker was incorporated into the format. Tinker's interest in American traditional music was the natural contrast to the mainly British Isles concentration up to that point.

So as the show goes now, it's an interesting rotation among four varied personalities. Mark Cantor's extra-curricular work with KRCL's own Desertaire as host, co-producer, actor, talent scout, and writer still leaves him that one evening a month to bring the more contemporary styles of Irish-Scottish traditional music across the "Mighty 91's" airwaves.

The G-Men—Hosts Chris Gittens and Hugh Garner

Possibly the most humorous pairing of personalities since the Smothers Brothers, these two childhood buddies have brought a

smile to the many KRCL listeners across the scheduled shows. Those zany PSAs are indicative of the attitude Chris and Hugh bring to their show, trying for something different from the stale format of the commercial disc jockeys.

Gittens first heard the station at about the same time he met Barb Guy (the affable and knowledgeable host of Tuesday evening's Generic Radio). Persistence paid off, and Chris was given a chance to perform a 3:00 to 6:00 a.m. show. Realizing it was easier with two, he brought in Hugh Garner to share the chores. The pair believe in having fun and sharing it. While the musical focus is the most mainstream of perhaps any of KRCL's programming, Hugh and Chris view their format as a real alternative to the commercial playlist in that they may play the same artists as those stations, but only songs other than those in rotation on the other entities.

When Hugh Garner left for Israel a while back, Chris Gittens kept the show himself, "a real disaster" as he calls those three months. Not to worry, for the "G-Men" are once again teamed to make Friday night a true T.G.I.F. celebration.

Andy Trauba



Rick Summers

Dave Spenser

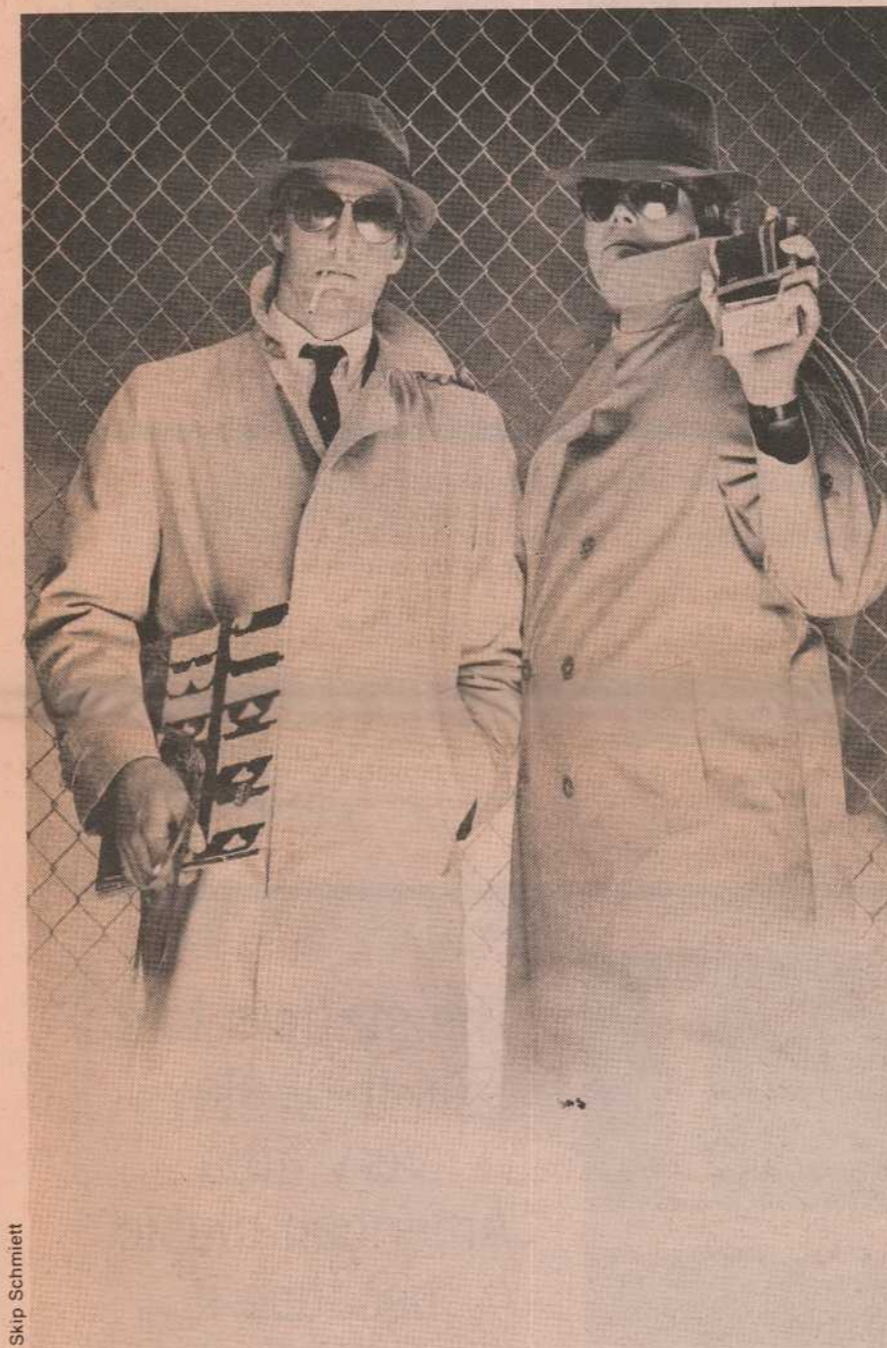


Finding Records

Lewis Downey, Mark Cantor, Paul Truex and Pete Tinker



Rick Summers



Skip Schmielt

Hugh Garner and Chris Gittens

KRCL's format has banished the small town adage "nothing changes around here but the weather."

NICARAGUA



historically been isolated from the rest of the country and tied culturally to Jamaica and the Caribbean, are popular, as are some Cuban folk-singers.

News programs include a daily program on regional and local issues, some CORADEP programming plus local interviews and features. The news shows include interviews and opinions of opposition leaders and sometimes are critical of the government. In fact, some of the staff members oppose government policies on various issues. This statement from the station staffers was in contrast to statements from anti-government businessmen we interviewed who claimed they never had a chance to get their views on the radio and thus listened to the foreign stations for accurate information.

We ended the evening at Radio Liberacion with a dinner of rice, beans, chicken and Nicaraguan *cerveza* and I gave Wilfred Rodriguez, the head of the collective, a KRCL T-shirt. Another member of our group, who works with WBAI, Pacifica radio in New York, donated a cassette player and some cassettes to the station, which overwhelmed the staff. They gave our group some Nicaraguan records in return.

A few days later we were at Radio Insurreccion in Matagalpa meeting

with the staff there. Marlin Stewart, the director of the station, told us that the orientation of the station is helping people with problems, especially the campesinos. His goal is to have a network of "people's reporters" to contribute news and opinions to the station and to make the relationship between the staff and the audience more "horizontal," meaning more grass-roots and less top-down. So far, lack of funds has stalled this project.

Daily programs for the station consist of regional folk music during the day, especially traditional music which the station is trying to help preserve, mixed with programs on recreation, health, and culture. From 5 p.m. to midnight the emphasis shifts to "music for those in the cities," especially young people. And late at night lively music and messages are played to keep awake and encourage those doing military vigilance (patrolling the streets of their neighborhoods). Our visit here ended with a taping session where two of their reporters interviewed me and two other lawyers in our group. Their questions focused on political issues: who supported Reagan; why the U.S. government was helping the contras; and other difficult questions about politics and culture in the USA. From school, radio, reading or wherever they were much better informed about our country than we were about theirs. The interview ran the next day and people in a nearby town identified us as the "gringo lawyers" from the radio show.

Nicaragua is a country at war and is a country populated with young people. Many of the national government leaders are in their early thirties and kids as young as 12 or 14 may be in the army. Furthermore, there are wide gulfs between the lifestyles of urban and rural people, typified by the sidewalk cafes in Managua with



Wilford Rodriguez and Bruce Plen

lobster and wine and the small town roadside cantinas serving rice and beans family style three times a day in agricultural areas.

Yet there is an incredible amount of enthusiasm and devotion to improving the lot of all the people expressed by many people we talked with, including the staffs of the radio stations. Some staffers had been to college, others were less well educated, but all seriously and vehemently told us of their hope to use the medium of radio to preserve the traditions of the

countryside particularly through such forms as music while developing the country and improving the quality of life for the campesinos.

It is hard for us to fully appreciate what life is like in a country at war. In Esteli, where Radio Liberacion is located, staffers as well as the rest of the townspeople were burying the dead and giving blood to help the wounded after a contra attack just a few weeks before we visited. The fighting there is very real and the



Studio at Radio Liberacion

The staffers told us they play very little American music because it "stupifies the listener" ...

radio stations are integrally involved. Contrast, for example, Radio Catolica and the contra stations who constantly run features and music portraying the good life of the U.S. while criticizing the Revolution, with the CORADEP stations who are trying to improve the life of the peasants by education and traditional local programming.

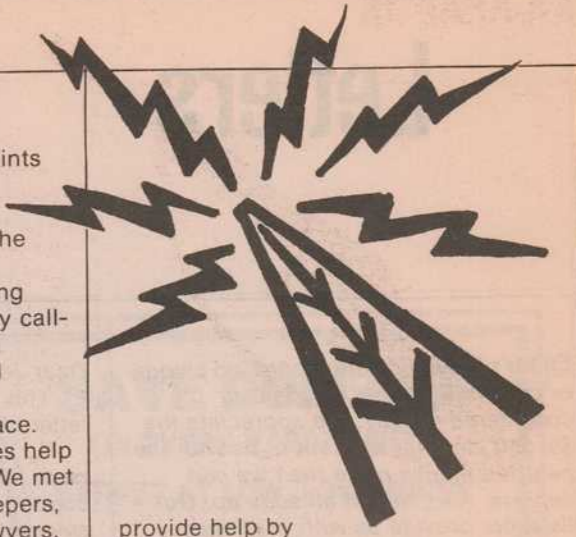
The importance of radio in Nicaragua cannot be overestimated. Because of the rural nature of the country, radio is the most important media for getting news to the people, and about 80 percent of the population listens to some radio station. There are two state-run TV stations but fewer people rely on them for news in the outlying areas. The war has resulted in some restrictions on all media in Nicaragua, including radio. On October 15, 1985, the government reinstated State of Emergency restrictions which had been in place from 1982 to 1984. For a short time in 1982, all radio newscasts

were suspended and radio stations were ordered to broadcast an official news program twice a day. That order was loosened substantially and by the fall of 1985, when I visited, the only restrictions on radio news required that news on the war and the economy be checked with official sources for accuracy. Violations of this informal code apparently can lead to license suspension or non-renewal. Since 1982, there have been two such incidents, and recently the Catholic station ran afoul of the code by urging draft resistance, but I have no reliable information as to whether any sanctions were imposed on the station.

Even with this limited wartime restrictions on radio, the broadcasts are often lively. Radio Sandino runs a popular daily show which pokes fun at the country's leaders and bureaucracy; and the government station runs a serious weekly program where govern-

ment officials respond to complaints of the people. The stations we visited ran public affairs spots on everything from using the water you cooked tomatoes in preventing diarrhea by rehydrating infants immediately. Occasionally call-in programs are aired along with poetry readings and other varied items.

Nicaragua is a fascinating place. The country needs and welcomes help from people all over the world. We met computer programmers, bee-keepers, medical personnel, students, lawyers, social workers, and people of many other professions from a lot of different countries. Foreigners, called "brigadistas," go to Nicaragua mainly to build homes or other buildings or to pick coffee. Others go on study trips or live with a family to learn Spanish. Still others who are interested in helping Nicaragua but cannot or choose not to go there can still



provide help by donating money, medical supplies or other items. American communities have become sister cities with towns in Nicaragua and exchanged citizens. In whatever way, if you are interested in helping Nicaragua, please call me and I can give you more information and contacts.

white aspen
Cleaning Services
Solve Your Gift Giving Dilemma!
Gift Certificates
Housecleaning • Walls • Windows
For a friend or yourself! **363-1408**
Kayt Whitten/owner

THE
TEPNER
CLUB

D.B. Cooper's

the
Salt Lake
Roasting Co.
& Cafe
400 South 249 East
Salt Lake City, Utah 84111
363-7572

Coyote Bill's

STAR DATE
The Astronomy Radio Series

— ATTENTION —
SALT LAKE'S ONLY
(24 HOUR)
ALTERNATIVE LIFESTYLE
TELEPHONE DATING SERVICE
— DIAL —
1-976-4297
55¢ FIRST MINUTE / 35¢ ADD'L MINUTE

New Year's Resolutions:

1. I will no longer support my landlord when I get nothing in return but leaky faucets, 'rental green' carpets and a bum furnace;
2. I will pay less taxes in 1986 because I will have a wonderful deduction called 'interest on house';
3. I will realize I can own my home for the same payment each month that I currently give to my landlord for rent;
4. I will call Babs De Lay and ask her the meaning of life, have her explain this ad, and when she's going to be my reator!

Happy Holidays and a Profitable New Year!
Babs De Lay
BERE REGIS REALTY
532-1424

P.S. Thanks for all the business in 1985

Letters

Editor's Note: For the record, no pledge or contribution to KRCL is ever considered measly. We appreciate the \$5, \$10 etc. that are sent to us with the heartfelt thanks more than we can express. And, hey, it all adds up. Our listeners provide us with over one third of our funding and that's what keeps us on the air. Thank you.

Dear John,

This is my first ever Dear John letter. WOW!!

So how ya doin', John? Good I hope. I'm staying busy with work, school, etc. Hope things are running smoothly out your way.

I felt it was way past time to make good my pledge(s) from Fall Radi... '85. oops!! '84, as well as drop a quick line or two. Needless to say, I really, truly, honestly, unquestionably, without a doubt, to erase all wonder, do indeed miss doing the Weekend Entertainment segment on Sat. morns. But most of all I miss the many faces and personalities of the most energetic and resourceful people I've ever had the pleasure to know. Thanks to both Donna and you all for your time and energy which allows "real people" something hard to find these days... a voice. Thank you all once again. It was great... See you again some day.

Happy Trails... with love,
Later,
Greg Morris

Dear KRCL,

Just a quick note to say "thank you!" for the terrific and varied programs your station offers. I recently moved to a small town in Idaho where I teach school. Not knowing anyone when I first moved here I felt a little lonely. I was ecstatic when I found I could get KRCL in my new home. I always listened to 91 FM when I lived in Logan and in the SLC area, but having it here makes the move less traumatic and I feel less "homesick."

I wish I could contribute more, but since I'm just starting out, I can't. I'll give what I can in appreciation for receiving your broadcast "clear up here in the boonies!"

Thanks again!
and again!
Jennifer T.

Dear KRCL,

The Fret 'n Fiddle show that was dedicated to old sea tunes (on August 8) was terrific! The three best singers of sea songs were, in my opinion, Joe Hickerson, Jeff and Garrett Warner, and Michael Cooney. Could you supply me with: 1) album names, 2) record company names and addresses for the songs that were sung by the above three artists on that Fret 'n Fiddle show? Any information that you send me will be greatly appreciated.

Sincerely, Carl M.

Hi,

Enjoy your variety of programming, particularly the bluegrass and foreign language hours. Impressed that you offer the service and variety when the area NPR stations won't even be bothered, a variety I've taken for granted with NPR stations elsewhere.
ACW

Dear KRCL,

I just love the station!
Reggae, Blues, New Wave, French Progressive, etc. Keep up the Festivities!
Cheers,
R. K.

I found this membership application while listening to last Thursday's Fret 'n Fiddle, and felt guilty. I enjoy KRCL. It's great to know such a station exists out there. I'm here from the New York area.

Keep it up. Thanks.
M.M.

Hi,

I listen to First Person Radio every Sunday. Thank you for playing that good music.

Thanking you,
Ruth F.

Dear KRCL,

You're a living breath amid the stale air of clones and automatons on the radio in Salt Lake.

Love, C. D.

Dear KRCL,

In fairness to the multitudes of volunteers that make KRCL so enjoyable, I'm having to address this letter to the station as a whole. During your recent radiothon I became very aware of the value of your station. We have contributed during all previous radiothons, though in the past I would pick one show to pay the full amount to.

This fall I thought I would split the money I had to contribute equally among all of my most listened-to programs. (These are programs which I make an effort to listen to weekly.)

My plan failed when I realized that I listen to over 30 programs a week. I felt upset that I could not support each program individually.

I would like to take the opportunity to thank a few of the programs that I feel make a significant contribution to the public of Utah.

A special thank you to Public Affairs, Consider the Alternatives, Our Arts, Latter Days Radio, Fairmenist Revolution (excellent), which brings us to Thursday. I could not express how much I think of Thursday's programming from Jerry Schmidt to PA 91 with a large emphasis on New Dimensions. All I can do is to beg

people to try listening. If they do listen, they will be back next Thursday. The list could get far too long but thank you Lynne, John, Joel Bloch, Julie, Barb, Mike, Mack, Nick, Babs, Dave, Dave, Jerry (my wife's favorite), Maggie and Cindy (two of my favorites), Mark, Perry, The Inspector (Bill), even Chris and Hugh, Larry Ficks, Andy, Dale, Myron, Jon, Ron, and yes, Brad.

Thank you to all of you, each of you contribute to Utah and community development more than you'll ever know.

Scott and Jenny G.

KRCL,

Remember my shirt! \$5.00 a month. Keep the jams alive on the Wednesday Drive! You're doing great, we all love you out here in the South end of the valley! Keep it up!

Sincerely,
Teresa S.

P.S. We need more soul!

KRCL,

Thanks for being the true alternative in music! Please mark my name on a \$5 a month plan. It's as much as I can give a month. Sorry it can't be more. I hope it will help keep the true alternative on the air. Especially with the other so-called "alternative" radio, 106 FM is still just a trend-centered, money-making music exploitation. The garbage they play is no more

"modern" than Tip O'Neill. Thanks for opening your time slots and mind and allowing shows like "Smile Jamaica," "Living Circle," "No Guarantee" and "Behind the Zion Curtain," plus all of the others! Thanks most of all for supporting and building the local bands, i.e., Saliva Sisters, Connie Brannock, Irie Heights, Maimed for Life, etc. And also for supporting the clubs and underground spots, Painted Word, Ranuch, etc.

Thanks for being the only progressive alternative.

A thankful listener,
Doug F.

Dear KRCL,

I'd like to take this rare opportunity to say "thank you" and "I'm sorry."

Thank you so much for my hours of listening pleasure. I appreciate "the alternative" radio probably more than anyone in Utah. I can't even begin to tell you how my heart fills with joy when I think about your desire to do all but appeal to the masses.

Although I am a devoted listener of KRCL, I am also poor. Therefore, I add my apologies to my measly contribution of \$5. But I hope you realize that the amount of money cannot EVEN be compared to the amount of pleasure gained. Thank you again.

A devoted listener, not to mention "supporter"
Luiz L.

BAMBOO RADIO

A Four Part Series

A Morning Light Special Thursdays at 8:30 a.m.

January 2 — Part I ALMOST HOME: Violence Against Asian-Americans

January 9 — Part II SWEATSHOP LABOR IN CHINATOWN

January 16 — Part III KOREAN SMALL BUSINESS

January 23 — Part IV INDOCHINATOWN



**SAVE DOLLARS
ON EVERY YARD! WITH
CARPET AT LOW, LOW PRICES**

**We have our own
professional installers**

HUNDREDS OF ROLLS ON DISPLAY

- DISCONTINUED PATTERNS
- SLIGHT IRREGULARS
- REMNANTS
- EXPERIMENTAL STYLES
- VINYL FLOORING
- OUTDOOR CARPET
- FIRST QUALITY CARPET
- POOR MANS ORIENTAL RUGS

**COMPLETE SUPPLIES FOR
THE DO-IT-YOURSELF
EXPERT ADVICE**

HOURS MONDAY THRU FRIDAY 10 AM TO 7 PM
SATURDAY 10 AM TO 6 PM CLOSED SUNDAYS

973-7046

3725 SOUTH REDWOOD ROAD






Catalyst

QUARTERLY CATALOG OF HOLISTIC COMMUNITY EVENTS dedicated to the healthy enlivening of the Wasatch Front. Subscriptions: send \$5 to 318 4th Ave., SLC UT 84103, 363-1505. Available for free at newstands.

Season's Greetings!

AIKIDO



SALT LAKE CITY

(801) 328-1381

Cabin Fever

*from ridiculous to sublime
greeting cards & diversions
that break the monotony!*

66 WEST FOURTH SOUTH

WASATCH TOURING
MOUNTAIN TRAVEL
SPECIALISTS



702 E. 100 S., SLC / 359-9361

Rio Grande
Cafe

RIO GRANDE CAFE

A FINE MEXICAN CAFE
RIO GRANDE TRAIN STATION
455 W. 300 SO.

Dulcimers
Guitars, Keyboards
Repairs


Acoustic Music

857 East 11th South
Salt Lake City, Utah 84102
Call (801) 531-7066

SMOKEY'S
RECORDS

1515 S. 15th East
Salt Lake City, Utah
84105

(801) 486-8709



Phillips
Gallery

444 East 200 South
Salt Lake City, Utah 84111
801-364-8284

X AGSTAFF
MUSIC CO.



(801) 261-4555

206 East 6400 South • Murray, Utah 84107

INS & OUTS

Volunteer activities at a glance..... by Lynne Van Dam

As the Holidays swing into high gear we wish you all pleasant festivities, good humor and abundant blessings. Our volunteers continue to surprise and delight us with their unpredictability and endurance. For one more year they have delivered this little station from all manner of pitfalls and pratfalls. We're grateful. Cheers.

Bye Bye

Alas, alas bah humbug! Dr. Feelgood, aka **John Wangsgard**, doesn't feel good and neither do we. He has taken a leave of absence, which we are all hoping will be temporary. His mellow good humor and diligent work are sorely missed, and hopefully he will return soon. For **Jim Sewell**, host of Sunday Moods, duty called and again KRCL has had to bid a tearful adieu to a fine programmer. Thanks, Jim. And if that's not bad enough, we're the ones singin' the blues cuz gorgeous George—whoops! **Joel Knuth**, of Monday Night Blues, Rhythm & Blues fame went into hiding. Rumor has it that he just had too many fans. I mean, we should all have it so bad, right? See ya in the movies, Joel. And a fond farewell to **Samboon Mongkolosombat** of the Thai portion of Asian Chimes on Saturday Mornings. Samboon has had an overload of personal time constraints and other priorities which have made it impossible for him to continue on his show. Many thanks to all four of you for your devoted time to KRCL.



Salud

Playing to wildly enthusiastic audiences, Salt Lake's own Folkdance Underground took Eastern Europe by storm this summer. KRCL's **Craig Miller**, co-host of Thursday nights' Utah Slavia and director of the company says, "We were the hit of the festival. In fact, after one performance we had a standing ovation that just seemed to go on forever." Miller explained it like this: "You see, Europeans, and particularly those from the Eastern Bloc countries love American Country Music, but few have seen the dances that goes with it and they loved those dances." The company only performed their American Repertoire during the tour, which was from August 21 to 31. Folkdance Underground represented the United States in the 5th International Festival of Folkloristic Ensembles held in Sosnowisc, Poland. You know, that's just right around the corner from Cracow. The group consisted of 22 men and women ranging in age from 23 to 51, and included a rainbow of participants—blacks, Japanese and Hispanics, as well as gays and straights. Ann Downey, sister of our illustrious engineer, won an award for being the most versatile musical performer. Next year, the group is planning to take on Yugoslavia. Why not? For more info, call Craig at 355-5239.

The Soaps



Winners Again

Just to bring you up-to-date on the continuing saga of transmitter heaven, we now understand a new soap opera is being written with **Lewis Downey** in the starring role, his sidekick, **Gary Smith** and occasional extras including **Doc Floor**, **Matt Sweetman** and **Chris Gittens**. From the rumor mill we hear the next episode involves a life and death struggle requiring mount to mount resuscitation. The Heavies are electronic bums with exciter fever and pack some very impressive SL r2d2's, but don't quote us.

New Blood

LIFE IS A CREATIVE PROCESS, the KRCL series produce by "Our Arts" interviewers **Desiree Mays**, **Marilyn Scharine** and **Carleen Jimenez** and funded, in part, by the Utah Endowment for the Humanities, has been nominated for a prestigious National Endowment for The Humanities Award. Each state nominates one outstanding project a year to NEH and Carleen, Marilyn and Desiree are honored and excited that their project was the choice for 1984/5.

Early Monday mornings (some people still think of it as late Sunday night) you'll be hearing a new voice, **Al Sherwood**, hosting his new show, Grand Larceny. Watch out for his almost illegal blend of rock and blues. And for those of you who've been missing your old friend behind Audio Gymnastics, welcome back **Ken Meyer**. He'll be right there on Monday's from 11:30 to 1:30. Hi, Ken. **Glenn Keister** is a new, old familiar face keeping your toes tapping late night Wednesdays from 1:30 to 3:30. And on Asian Chimes adding a much needed music portion from the Country of Laos, we're happy to introduce host, **Chara Souratha**. Cheers!

SUPPORT The Alternative

Name _____ All Contributions Are Tax-Deductible. Mail to:
Address _____
City _____ State _____ Zip _____
Telephone _____

MEMBERSHIP DUES (Annual)

- \$15-Low Income, Student, Elderly
- \$20-Supporting (regular)
- \$30-Supporting Plus KRCL T-Shirt
- \$50-Sustaining (may be paid \$10/month) Plus KRCL T-Shirt
- \$100 (100 MCR) Patron (may be paid \$25/ month) Plus KRCL T-Shirt.
- New Subscription
- Renewal/Addition

T-Shirt Size: (S) (M) (L)

K R C L Q 1 F M

Listener's Community Radio of Utah
208 WEST 800 SOUTH
SALT LAKE CITY, UTAH 84101
TELEPHONE 801-363-1818

THE RECORD COLLECTOR
2048 South 7th East
484-6495

BUY
SELL
TRADE

NEW and USED
RECORDS

Specializing in
THE OLDIES

Salt Lake Federated MUSICIANS

we're the
PROFESSIONALS
486-0713

We Support
the
Performing Arts

HELPING continued from page 7

- Salt Lake City**
Baptist Concern Center
61 "E" Street
Phone: 363-5922
Hours: 9 a.m. to 4:30 p.m.
- Black Education Scholastic Foundation**
717 South 200 East
Phone 363-5771
Hours: 8 a.m. to 5 p.m.
- Catholic Community Services**
132 South 300 West
(Located in the St. Vincent de Paul Thrift Store—Emergency Services)
Phone: 534-1426
Hours: 9 a.m. to noon and 1 p.m. to 4 p.m.
- Crossroads Urban Center**
347 South 400 East
Phone: 364-7765
Hours: 9 a.m. to 4:30 p.m.
- Indian Walk-In**
120 West 1300 South
Phone: 486-4877
Hours: 8 a.m. to 5 p.m.
- Salvation Army**
427 West 200 South
Phone: 322-1253
Hours: 9 a.m. to 11 a.m. and 1 p.m. to 2 p.m.
- St. Marks Episcopal Cathedral**
620 Goshen St. (1040 West)
Phone: 532-8177
Hours: 1 p.m. to 4 p.m. M—F
- St. Vincent Catholic Church**
1375 Spring Lane
Phone: 272-6702
- Utahns Against Hunger**
21 G Street
Phone: 328-2561
Hours: 9 a.m. to 5 p.m.
- Utah Issues**
231 East 100 South
Phone: 521-2035

- Community Action Program (CAP) offices**
- Northwest CAP**
Northwest Multipurpose Center
1300 West 300 North
Phone: 359-8741
Hours: 8:30 a.m. to 5 p.m.
- South Salt Lake CAP**
2475 South between State and Main Streets
Phone: 486-4363
Hours: 8:30 a.m. to 5 p.m. T,TH

- Westside CAP**
620 Goshen St. (1040 West)
Phone: 595-0058
Hours: 9 a.m. to 4:30 p.m.
- South County CAP**
Copperview Multipurpose Center
8446 South 340 West
Phone: 255-3516
Hours: 9 a.m. to 5 p.m.
- Magna CAP**
3041 South 8560 West
Phone: 250-6414
Hours: 9 a.m. to 4 p.m.
- Midvale**
Parish of St. Therese
112 South Allen Street
(Approx. 2900 South 650 West)
Midvale, Utah
Phone: 561-0431
Hours: 1 p.m. to 3 p.m. M,TH,SAT.
- West Valley City SOCIO**
Redwood Multipurpose Center
3060 South Lester Street
(Lester Street is one half block east of Redwood Road)
Phone: 972-1027
Hours: 8 a.m. to 4:30 p.m.
- West Jordan**
St. Joseph's
7405 South Redwood Road
(Ask for Vi Cavanaugh)
Hours: by appointment

own," Johnson says. "That's an incorrect perception of reality." To make the point, Johnson notes that in 1984, LDS Social Services, the welfare arm of the Church of Jesus Christ of Latter-day Saints, assisted 85,000 people out of the organization's 6 million members worldwide. At that time, there were 215,000 low-income people living in Utah alone. Middle class values prevail in Utah which underscores the presumption that a low-income culture is nonexistent, Johnson continues. "The biggest problem among poor people is that they think they're the only ones who are poor; there's no commonality of experience. And, as desperate as they might be, they often think they're not poor enough to be eligible for assistance." An unemployed single mother who needs money to feed her children might resort without thinking to selling the family car and telephone—actions which only increase her isolation. As Johnson says: It's tough to be part of mainstream society or to look for a much-needed job when you don't have transportation or a way of communicating with potential employers. (In Utah, the problem of transportation is critical since the mass transit bus system is both limited and unreliable at times.) Furthermore, where does a person get the energy to look for a job when there is a lack of nutrients in his or her diet?

In The Mood
HAIR DESIGN AND COLOR

850 EAST 900 SOUTH
SALT LAKE CITY
343-3071

Utah Mountain
Guitar & Banjo

guitars mandolins fiddles books, kits
banjos hand-made instruments accessories

Master Craftsman Rentals Lessons
712 EAST FIRST SOUTH, SALT LAKE CITY, UT 84102
(801) 322-4682
10 AM-6 PM, MONDAY thru SATURDAY

"Those first five years of a child's life is when 90 percent of the brain's growth occurs. A lack of nutrients can have long-term affects," Johnson says. A hungry child often motivates a single parent in poverty to go through the hassle and, in some cases, humiliation, of applying for governmental assistance or picking up emergency groceries from a local food bank.

"Donating food is the most immediate way of helping," Johnson says. "But you have to keep in mind that \$24 million in food stamps comes into this state through the federal government. Food drives can't ever replace that."

Johnson believes justice, not just compassion, should guide attitudes toward hunger and poverty. "Charity should be an option," he says. "But public policy is society stating: 'It's not right for people to be going hungry. To eliminate hunger is important to us... as important as having our roads paved.'"

In lieu of such an altruistic public policy, Johnson admits, charitable action is not only commendable but necessary.

Unfortunately, an erroneous belief persists in Utah that all is well in Zion. "A lot of harm is done when we assume Utahns take care of their

The most persistent perception of the impoverished—one that social workers contend is blatantly false—is that somehow it's the poor's own fault for being poor. That notion, no doubt, gains popularity as the fortunate remain physically, and perhaps emotionally, isolated from the less fortunate. A Catholic bishop recently interviewed on national television called this separatism that keeps some of us living and working in only certain sections of town the equivalent of "economic apartheid" in the United States.

If placing blame on the poor is rooted more in ignorance than insensitivity to the facts, perhaps the public needs only to hear more about specific circumstances that send real people swirling downward on the economic scale. Perhaps then, it won't be so important to look for something or someone to blame at all.

Take the family of Cathy Hoskins mentioned; the family of five who was living out of a car couldn't use the canned foods that were donated to them because they had no place to cook. The father of that family, whose injuries from an accident set off a chain of fateful events that placed his family squarely in the pit of poverty, made an annual salary of \$35,000 a year ago. Now his kids are hungry. But who's to blame?

SELF ESTEEM / GESTALT / ASSERTION TRAINING FOR WOMEN AND MEN WITH

Jan Kraft Deelstra—Self Sufficiency/Organizational Consultant.
Mack Gift Ph.D.—Consultant/Gestalt Assertion Trainer/Author.

- Affirmation of Personal Balance
- Recognition of Personal Power
- Assertive Communication Skills
- Interpersonal Conflict Resolution
- Re-discovery of the "Whole" person
- Constructive Utilization of Personal Energy
- Self Esteem/Independence
- Developing Positive Friendships, Partnerships

Time: 7-10 P.M.
Dates: Wednesdays and Thursdays for Four weeks beginning February 5th, 1986.
Fee: \$250.00
Place: Marmalade Career Counseling Institute
165 West South Temple, Arrow Press Square
Building 6, Suite 200, 84104.
Phone: 532-7110

For Information and Pre-registration please contact
Jan Kraft Deelstra Phone: 483-1554 or
Mack Gift Phone: 466-9134

HARVEY'S
Piano Music & Prime Rib

PERFORMANCE AUDIO

2398 So. Main Salt Lake City, Utah 84115
801-355-8890