

March/April 1986

Program Guide

363-KRCL  
363-1818

**SPRING** *Radiothon '86*

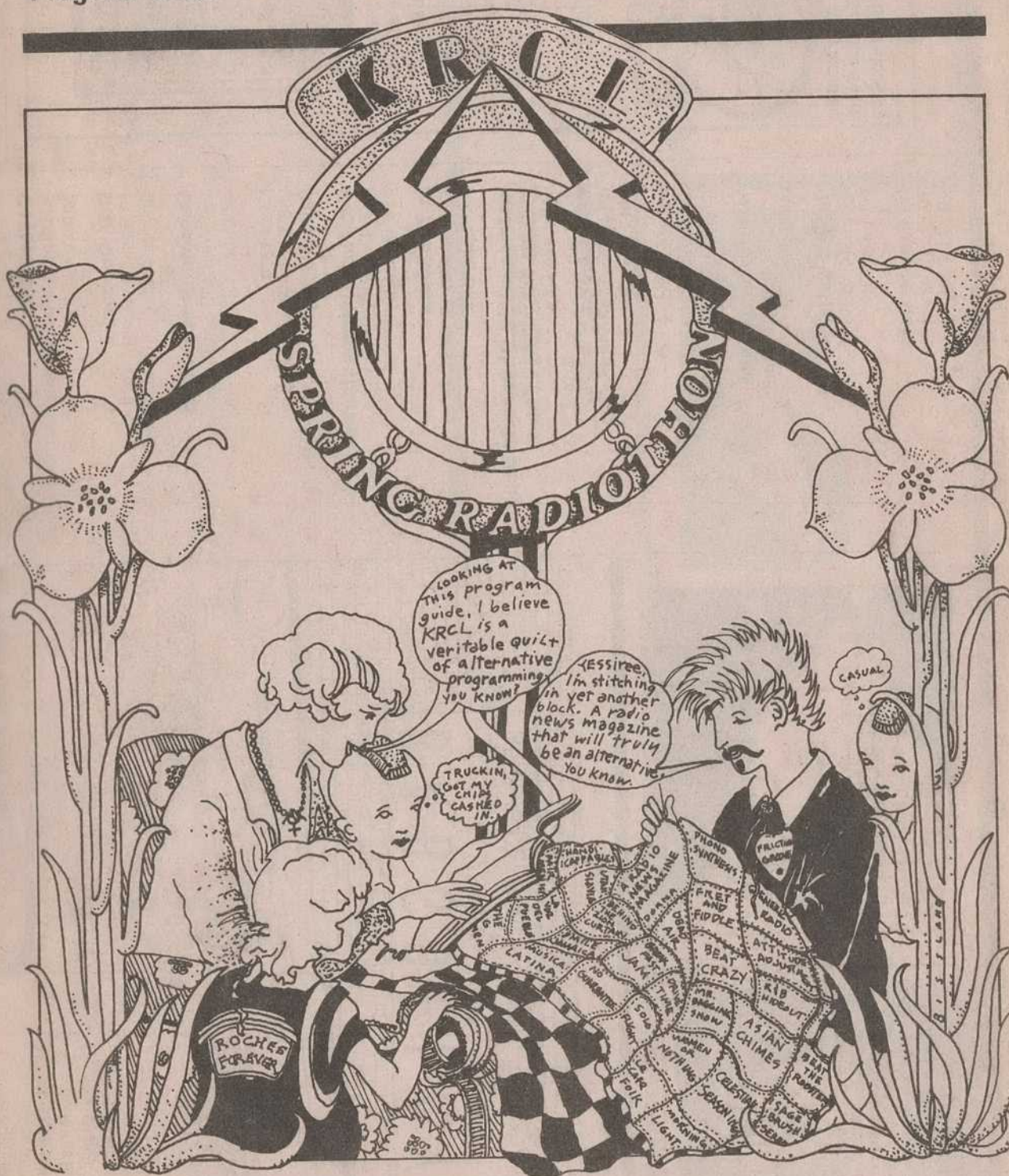
**PREMIUMS**  
SKETCHBOOK

See Page 3.

208 West 800 South, Salt Lake City, Utah 84101  
Phone (801) 363-1818

Non-Profit Organization  
U.S. Postage  
PAID  
Salt Lake City, Utah  
Permit Number 3973

Please notify us of any change of name or address.  
The post office will not forward program guides.



Inside—New News is Good News  
Ringing In The Witching Hour

## NEWS FOCUS

by Sandra McIntyre

For listeners who longed for a local complement to *Pacifica News*, for an alternative perspective on news events in our community, KRCL Operations Manager Donna Land Maldonado and over 25 volunteers have turned a new page in station history.

Thanks to Donna's planning, and to enthusiastic volunteer participation, KRCL's first-ever local news program hits the airways. Starting February 28, KRCL features an all-news Newsmagazine—as yet unnamed—every Friday at noon.

It's an experiment," says Station Manager John Greene.

"It's a beginning," maintains Donna. Volunteers call it "exciting." But all agree on one thing: it's time. "It's always been in the back of our minds to get a news program going," Donna explains. "At the end of last year, we decided this was as good a time as any."

Inspired by workshops she attended at the National Federation of Community Broadcasters convention in Madison, Wisconsin last summer, Donna began talking to volunteers about covering stories for a newsmagazine format, which mixes "hard" news with "soft" features and commentary. In January, the meetings began.

The focus of the show is local, and volunteer reporters home in on events untouched by other media. "There are a lot of things happening in our community, but the local media doesn't pick them up unless they are sensational," Donna points out. "For example, what was the end result of the protesting by handicapped people for better access to UTA transportation? When there was a demonstration, we heard a lot about it for a while, but the commercial media didn't follow up on the issue."

With the recent demise of the all-news format on KDYL (1280 AM), radio news in the Salt Lake area has become "basically a monopoly of KSL (1160 AM)," according to Mel Baker, a KRCL volunteer and former KDYL reporter. Although a few other stations, such as KALL, KLUB, and K-LITE provide headline items, this



Donna Land Maldonado  
Operations Manager  
continuing the challenge

# New News is Good News

sketchy news is often "slanted," Mel maintains. "Every station has developed a very careful policy," he says. "There is a resistance to doing a deep probe of anything related to certain issues."

KRCL's Newsmagazine will provide a "place where more free ideas are exchanged," Mel thinks. "It can provide intelligent commentary from a totally alternative angle, one that you're not going to hear on KSL. We can hear a story on homosexuality, or on something like the Mormon documents controversy."

Providing a news alternative is a major reason for volunteers' involvement in the new program. "Watching commercial news, I get frustrated with the one-sidedness," says Nini Rich.

Lynne McCue-Hamilton points to stories that are seldom presented by other Salt Lake area stations. "The Newsmagazine provides a way to present some of these stories," she says. "We can focus in and give more time to certain subjects that need to be

covered."

Long-time public affairs contributors have shown special enthusiasm for the show. "I'm enjoying the chance to work with a wider range of people and to report on different kinds of issues," says Deborah Levine, producer of *Nuclear Waste Update*.

Mickey of *Concerning Gays*, is excited about providing local news. "If we can have alternative news about Salt Lake City that is even half as good as *Pacifica News*, I want to be involved!"

Alternative story ideas abound. "There's very little positive labor coverage in the mass media in Utah," maintains Jean Reagan. "KRCL is the perfect place to start turning that around."

Tom Blackwood has tackled the anti-loitering statute aimed at young people near the downtown malls, while Mark Smith is taking on the dearth of housing for the handicapped. A sample of other upcoming topics includes the plight of the homeless mentally ill, demonstrations at the Nevada Test

Site, proposed hazardous waste legislation, the exclusion of women at the prestigious Alta Club, the excommunication of LDS church members with AIDS, and sanctuary for Salvadoran refugees in Utah County.

A large burden of pulling the show together rests with Producer Donna Land Maldonado. This has meant some changes in her work. "I've had to change my priorities with the station in order to take on this project," she says. "But I'm glad to have a new challenge." She hopes to turn over some operations tasks to volunteers to free up more time for the Newsmagazine.

Donna brings a variety of skills in programming and producing to the Newsmagazine. Her association with KRCL goes back to 1979, when she came to the station as a Native American programmer through the CETA program. In 1980, she began coordinating minority participation at the station as ethnic affairs director. In recent years as operations manager, her job responsibilities have expanded to include other programming needs.

On KRCL's staff longer than any other current staff member, Donna is well-known for her steady work keeping Radio Free Utah on the air. As volunteer training coordinator, Donna is KRCL to new volunteers, while even relatively old-timers turn to her regularly with programming questions and concerns. Public affairs volunteers have had an especially close relationship with Donna, through her coordination of the local "Updates" from different organizations. And *Pacifica Newshounds*, as well as *First Person Radio* and *Enfoque Nacional* buffs, owe their listeners' loyalty to Donna for bringing in alternative national programming.

In addition to her regular contact with programmers and producers as a staff member, Donna "works the board" herself. Her contemporary folk music program, *Le Cafe Folk*, airs every Monday morning, and she relieves Jim Bilagody once a month as the programmer of *Living the Circle of Life*, Sunday morning's Native American music and information show.

continued on Page 6

# Report to the listener

**T**his year, 1986, promises to be a momentous one for KRCL. Let me tell you why. By the end of this March, KRCL will have completed its first full year of receiving Corporation for Public Broadcasting (CPB) support. The grant for this period totaled just under \$45,000 and has been a tremendous boost to our operating budget. To demonstrate just how critical our need for this money was, we are still not totally free of debts we had accumulated prior to becoming CPB qualified.

In addition to the annual grant from CPB, we received a one time grant for \$10,000 to become what's called satellite "interconnected." Simply stated, this \$10,000 must be spent on acquiring a satellite dish and the attendant hardware so that KRCL may then be equipped to take audio programs directly from satellite, for simultaneous broadcast, or taping programs for air play at a later date. We hope that by late Fall, our satellite project will be completed. Satellite capability will not mean the wholesale reformating of our program schedule, but it should certainly lead to a much wider variety of program offerings to choose from on a week to week basis. Needless to say, we're excited about this prospect.

The size of our grant from CPB each year, depends upon the overall size of the stations's operating budget. As community support for KRCL grows, both in dollar donations and in the amount of donated goods and services, CPB will increase its support to the station. That is, unless Congress decides to cripple the Corporation for Public Broadcasting with cuts to their budget, a reality not outside the realm of possibility. Allow me to explain. President Reagan, it seems, has never been a fan of public funds going to support non-commercial radio and television. Or, to state the case more accurately, President Reagan has proposed, and is once again proposing, that Congress cut the funding of CPB drastically over a five year period beginning with 1988. CPB is the federal program that distributes money to both public radio and public television. Eighty percent of CPB's grant program goes to fund television, the remaining twenty percent to public radio. If these proposed cuts become a reality, something radically different than we are accustomed to, will happen to non-commercial radio and educational television.

And so, in the glow of our initial year of CPB support, a President with a budget axe looms on the horizon, threatening to eliminate the very program that has given us all new energy in our striving to provide radio unfettered by commercial messages, and responsive to the community in which we live. Stay tuned for the continuing details of this real life drama.

Spring Radiothon, a funding event even the U.S. Congress cannot control is set to begin April 4th and will continue for nine days and nights until Sunday at five p.m. April 13th. Our goal is to gather forty-eight thousand dollars in pledges from our listeners. Radiothons, in case you're new to KRCL, are conducted twice

annually, once in the Spring and again in the Fall.

While you may have heard other public radio and television stations ask for donations, KRCL does it with a flair and spontaneity that has to be heard to be believed!

As usual, we'll have tee-shirts, mugs, and other enticements to try and shake loose a pledge from you. All we really need to do however, is have you consider for a moment what it would be like if there were no KRCL. Many styles of music, and programs exploring alternative points of view would simply disappear from the airwaves. But let's not dwell upon the ramifications of our dissolution. Rather, let's pool our energies and make this our most successful

Radiothon ever. Keep in mind that this is the best time to demonstrate your appreciation for the tremendous volunteer program staff that donate so much of their time, energy and monetary resources, (records aren't cheap) for all of our listening enjoyment.

By the time you receive this program guide, we hope to have completed our annual studio face lift. New paint, new carpeting, and a clearing out of accumulated "stuff", to make room for Radiothon and hopefully your visit to our studios to make a donation, Till then.

John Greene  
Station Manager

## Behind the Sounds

### Board of Trustees

*Chair*  
Howard Lundgren

*Vice-Chair*  
Larry Ficks

*Secretary/Treasurer*  
Barb Guy

*Board Members*  
Bob Flores, Maria Garcia, Steve Holbrook, Genaro Padilla, Jerry Schmidt, Paul Wharton, Maggie Wilde.

KRCL's Board Meetings are open to the public. Board meets on the first Thursday of even numbered months.\*

### Staff

*Station Manager*  
John Greene

*Operations Manager*  
Donna Land Maldonado

*Office Manager*  
Cathy Siegel

*Development Director*  
Lynne Van Dam

*Chief Engineer*  
Lewis Downey

### KRCL Volunteers

Cindy Adams, Gary Allen, Mike Anderson, Robert M. Archuleta, Natalie Atherton, George Alex, Ed Bagley, Deena Brazy, Bob Bedore, Dan Benaducci, Laurie Bennett, Jim Bilagody, Tom Blackwood, Sarah Boulette, Karen Bowers, Dave Bowyer, Chuck Bradley, Jon Bray, Deena Brazy, Mark Cantor, Dale Carlson, Brad Collins, Babs De Lay, John Dean, Percy Devine, Marvin Dixon, Jim Elder, Myron Fairbanks, Pat Fenderson, Victor Fernandez, Larry Ficks, Oscar Figueroa, Bob Flinger, Matt Flinger, Rex Flinger, Doc Floor, Mack Gift, Nick Gioello, Eric Gisler, Chris Gittens, Juan Gonzales, Barb Guy, John Halaliku, Jimmy

Hamamoto, Marc Hoenig, Carol Huey, Carlie Jimenez, Dave Iverson, Mark Jackman, Dave Jacobs, Mike Katsan, Glenn Keister, Brian Kelm, Erik Kingston, Bill Komlos, Andy Langton, Ray Larsen, Jeannie Lesh, Debra Levine, Lisa Lucero, Julie Lueders, Lisa Mace, Maden Maric, Dan Maryon, Desiree Mays, Lynne McCue-Hamilton, Sandra McIntyre, Mary Menconi, Craig Miller, Annina Mitchell, Jeffrey Montague, Maureen Mooney, Becky Moss, Robert Moss, Kevin Murphy, Hang Nguyen, Thom Odom, Mark Palmer, Roland Pearson, Terinell Pelley, Harry Piltz, Vicki Pugmire, Linda Reeder, Nini Rich, George Ricker, Joe Roach, Violet Ruybal, Bruce Saffran, Dave Santivasi, Marilyn Scharine, Richard Scharine, John Schellinger, Jerry Schmidt, Ellen Selu, Wayne Selu, Kurt Setzer, Jim Shelton, Al Sherwood, John Shilao, Sam Smith, Chara Souratha, David Spencer, Shirley Stevens, Rick Summers, Pete Tinker, Andy Trauba, Paul Truex, Joel Uljakiola, John VanDenBerghe, Robert Velasquez, Grady Walker, Dana Wanders, Ron Ward, Cissi Warner, Susan Weisenberg, Terry Tempest Williams, Darrell Young, Dolly Young, Grey Young

### Program Guide Staff

*Editor*  
Lynne Van Dam

*Production and Design*  
Barbara Betthausen

*Contributing Writers*  
John Paul Brophy, John Greene, Donna Land Maldonado, Sandra McIntyre, Cathy Siegel, Lynne Van Dam

*Contributing Artist*  
Bob Bissland

*Typesetting*  
Karen Heminway, Alphabet Soup

*Contributing Photographers*  
Rick Summers

*Advertising Representatives*  
John Schellinger, Jerry Schmidt

*On the Cover*  
Bob Bissland



DO YOU KNOW WHERE  
PACIFICA NEWS IS?

363-KRCL  
363-1818

# SPRING Radiothon '86 PREMIUMS SKETCHBOOK

*T-shirts \$3.50 donation  
Mug \$2.50 donation  
Record Bag \$2.50 donation*

**THE ULTIMATE WOMEN'S TANK TEE**  
For bold men too, this summary new KRCL design comes in striking red & stunning aqua with two of the world's most powerful symbols combined to electrify your every move. A further enhancement - these tank tops are unribbed - and a real woman knows what that means...

**LION OF ZION JAH-T**  
Get up. Stand up. Put this Tee shirt on. Back by popular demand, KRCL's one color only iconographic delight sports the Ethiopian tri-color flag. A Smile Jamaica special in blazing yellow, complete with Zion, lion and state-triatic beehive. Jah-love.

**KRCL CLASSIC TEE**  
Not to be confused with the beverage, the KRCL Classic Tee graced bodies of grateful listeners from Delta yea unto the very borders of Idaho. Perfect attire for canyon or casino, kayak or camaro. With the Classic Tee you'll be proud of your ears and body.

**STEAL YOUR FACE TEE**  
Only a Dead Head knows the meaning of true devotion. Our Steal Your Face Tee is for discriminating souls who can't wait to wade in a drop of dew or stride into the ozone. A familiar 4-color design on blinding white cotton with a message (from Jerry G.) on the back - "There's a price for being free."

**NIFTY POCKET TEE**  
Our listeners have been clamouring for this new addition to the KRCL clothes line. From Pinecrest to Panguitch they've been waiting for the Tee that will give them that strangely authentic James Dean look. Dale Carlson recommends extra tight size. (shrink to fit!)

**KRCL RECORD BAG**  
Our all natural post-up style Record Bag, featuring of course, the logo of Your Only Sound Alternative in vivid blue print. Space enough for sundry items necessary for the good conduct of a listener's life.

**THE JOE BENNION MUG**  
This rugged coffee mug is hand-thrown especially for KRCL by Joe Bennion of Horseshoe Mt. Pottery. For 6 years now Joe has made our KRCL mug down in Spring City. If you're down that way, stop in. He'll be tuned in.

*The Program Guide accompanies any donation over \$20.00  
Students @ Senior Citizens - \$15.00*

# KRCL Public Affairs Schedule

The months of March and April bring some additions, some specials, and a change or two. Sound like your basic ordinary program update? Not so fast. One particular format addition is especially important: a locally produced news magazine. We have long dreamed of having our own news staff and we feel that this news magazine is just the beginning. For details see Sandra McIntyre's feature article. Sandra will also be one of our many contributors to the magazine.

To celebrate Women's History Week and International Women's Day, March 8th, we have some outstanding programs scheduled throughout the month. First, we have a series called "Family of Women: Stories from a World Gathering" produced by five women who are in the words of Dave Taylor, director of Program Services for the National Federation of Community Broadcasters, "Adi Gevins, Elisabeth Perez Luna, Judi Moore Smith, Helene Rosenbluth and Karen Michel McPherson must surely top anybody's list of the finest producers working in public radio today! Their acumen with the tools of radio production, their proven sense of program aesthetics and track record as individual producers are renowned system-wide." Hear Hear. See Thursday Morning Light schedule for topic titles. Second, there will be short modules woven throughout all of the programs, some of which are produced locally about Utah women and some which are produced nationally. A series of special interest is "The Feminization of Poverty: Five Features" which explores the disproportionate number of women in poverty, the women most vulnerable to poverty, why women are more likely to be poor even though they work, single mothers, and problems of child care and potential solutions. These will air on March 8th and at other times, so keep your ears accessible.

"Totally Wired II" will be rebroadcast on P.A. 91, Tuesday evenings. "Maritime Rites", a series of environmental concerts will filter the air between NEW DIMENSIONS and DAYDREAMS. Two other programs that are an absolute must: "A Palestinian-Israeli Dialogue," produced by Helene Rosenbluth, will give an even different perspective to the Palestine/Israeli conflict and it airs Thursday, April 4th and 10th. (Note: part of our special radiothon programing); and a thought provoking program called "The Star Wars Controversy" will air on P.A. 91, Thursday March 13th at 7:00 p.m. This is a one hour documentary report on the implications of President Reagan's Strategic Defense Initiative. While Reagan continues his Star Wars Promotion, and alternative for world peace, "The Great Peace March" will begin March 1, 1986. "The Great Peace March" leaves Los Angeles on a walk across the U.S. to Washington, D.C. and its organizers hope to have a profound impact on those in power. The message: peace means an end to nuclear weapons on earth and an end to "deterants." The march is scheduled to reach Utah, April 1st and during the trek across Utah, KRCL will have live reports and interviews by a KRCL representative, Thomas Johnson. Tom will walk the state



*The Feminization of Poverty*

giving listeners an inside view and personal feelings of the participants. Listen for it on our new weekly news magazine and on several Drive Times. And now this; SHORT FEATURES is growing. "Sunspot" is being rerun but fewer times per week. "Nuclear Issues Report" is officially logged and "From a Women's Perspective," can be heard on Tuesdays. A limited feature, "Sing Out" a folk music series will air on Monday and Thursday on MUSICA LATINA. Check the short feature column for exact times and days. Finally, a secret for you, only. Starting in May there will be a few changes in format. We'll be giving clues on the air around the middle of April. One small clue—it's something we aren't doing now and we are real excited cause it will add yet another dimension for our listeners.

## SUNDAY

**First Person Radio**  
8 a.m.  
News, information and perspectives of Native Americans as seen by the Native American.

**New Dimensions**  
9 p.m.

- Mar. 2: "The Dreambody," with Arnold Mindell, a Jungian analyst.
- Mar. 9: "Timeless Wisdom And The Changing Culture," with Paul Cash and Amy Opperman.
- Mar. 16: "Visions of Wellness," with Larry Dossey, M.D.
- Mar. 23: "Into The Deep: Male Mysteries," with Robert Bly—one of America's leading poets.
- Mar. 30: "Wobegon Tales," with Garrison Keillor—creator and host of the popular NPR program.
- Apr. 6: "Earthwoman," with Lynn Andrews, author.
- Apr. 13: "The Natural World of Robert Bateman."
- Apr. 20: "Dharma Drums," with Tai Situ Rinpoche, precepts expoused by Buddhism.
- Apr. 27: "Conscious Dreams," with Stephen Laberge, exploring the realms of dreams.

## Music from "The Hearts of Space"

10 p.m.  
This show combines the best of the new electronic and electro-acoustic Spacemusic. It is brought together into lyrical, evocative journeys with minimal commentary. An Ann Turner, Stephan Hill production.

## MONDAY

**Morning Light**  
8:30 a.m.

"Consider The Alternatives," a SANE production on alternative notions of today's global concerns.

**Our Arts**  
11:30 a.m.

Interviews with local or visiting artists produced by hosts Desiree Mays, Carlie Jimenez or Marilyn Scharine.

- Mar 3: Women's bibliography with Margaret Bacha and Barbara Millsap.
- Mar 10: Guest: Lorrie Smith of Utah Film Development.
- Mar 17: An Irish woman in Utah—Yvonne Virschner.
- Mar 24: The Women's Conference.
- Mar 31: Chinese culture in Utah with Susan Chow.
- Apr 7: Radiothon Live with "We Three" and friends.
- Apr 14: The Myth of the bear in American literature.
- Apr 21: Prison poets, part I.
- Apr 28: Prison poets, part II.

**Concerning Gays and Lesbians**  
12 noon  
A program to help educate the public on a different lifestyle. Hosts: Mickey & Dean.

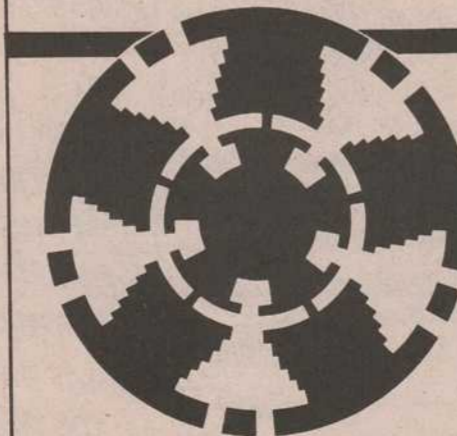
**Cambridge Forum**  
12:30 p.m.  
The program CAMBRIDGE FORUM will run through the month of March, then starting in April the program: FOOD FOR THE THOUGHTFUL will air during this time slot. FOOD FOR THE THOUGHTFUL a series to inform the listener on a vital subject—food.

**P.A. 91**  
7 p.m.  
"Conversations from Wingspread," a free exchange of ideas. Produced by the Johnson Foundation.

**Handicapables**  
12 noon  
Host Linda Reeder talks with those who are or work with the "handicapped... the month of March will feature all women, to celebrate Women's history and International Women's Day.

Mar 4: Kathy Tyler informs listeners on the Disabled Woman's Conference.

Mar 11: Glenda Ceelos talks about a special transportation



**Thursday Morning Light**  
8:30 a.m.

- Mar 3: "The Shiites of Lebanon"
- Mar 10: "The Needs of the Elderly"
- Mar 17: "Health Care and Housing for the Elderly"
- Mar 24: "The Self-Employed Woman"
- Mar 31: "Terrorism"
- Apr 7: "Central America"
- Apr 14: "Teaching and Learning in Early Childhood"
- Apr 21: "American Agriculture in the World Market"

## TUESDAY

**Morning Light**  
8:30 a.m.

"First Person Radio"—Native American weekly news.

**Community Notes**  
11:30 a.m.

- Mar 4: Museum Notes, with host Terry Tempest Williams.
- Mar 10: Working Together, with hosts Shirley Stevens and Karen Bowers.
- Mar 18: Community Development
- Mar 25: It's The Law with Tineke Van Dyke and guest, the ACLU, to talk about civil rights.
- Apr 1: Museum Notes: with host Terry Tempest Williams.
- Apr 8: Working Together with Shirley Stevens and Karen Bowers.
- Apr 15: Community Development. It's The Law. Host Tineke Van Dyke speaks with guest Louisa Baker, attorney, on child support laws.

**Handicapables**  
12 noon

Host Linda Reeder talks with those who are or work with the "handicapped... the month of March will feature all women, to celebrate Women's history and International Women's Day.

- Mar 4: Kathy Tyler informs listeners on the Disabled Woman's Conference.
- Mar 11: Glenda Ceelos talks about a special transportation

## FAMILY OF WOMEN

### STORIES FROM A WORLD GATHERING

Five half-hour programs of interviews, stories, conversations, and music from Forum '85, an open gathering in Nairobi, Kenya, in conjunction with the final conference of the United Nations Decade for Women.

- Mar 18: project for the disabled. Shirley Atkinson talks about her job as a counselor for the blind rehab center.
- Mar 25: Lisa Adams informs the audience on the Center for the Deaf.

## Enfoque Nacional

1 p.m.  
A Spanish national news program en Espanol. A Western Community Bilingual Radio and Radio Bilingual production.

## P.A. 91

7 p.m.  
"Totally Wired: Artists in Electronic Sound" (Part II) is the successor to the award-winning radio documentary series. An exciting, all new exploration of the most significant musical development of the 20th century... the advent of electronic instruments and synthesizers. Produced by John Diliberto and Kimberly Haas.

Mar. 4: Program #1: Performance Art with Laurie Anderson

Mar. 11: #2: New Age Electronics with Andreas Vollenweider and Michael Sterns.

Mar. 18: #3: French Musique Concrete with Perry Schaeffer and Perry Henry.

Mar. 26: #4: Symphonic Synthesis with Jean-Michel Jarre.

Apr. 1: #5: Trans-World Synthesis with Jon Hassell and Eberhard Schoener.

Apr. 8: #6: Trans-World Synthesis, part II, with Jade Warrior.

Apr. 15: #7: Studio Art with Kate Bush and Martin Rushent

Apr. 22: #8: The Science of Sound, Institut de Recherche et Coordination Acoustique Musicque (IRCAM) and John Chowning and CCRMA.

Apr. 29: #9: America's Electronic Underground with Michael Garrison, Kerry Leimer, and Tans-Millenia Consort.

## WEDNESDAY

**Morning Light**  
8:30 a.m.

"Common Ground," a series on World Affairs produced by the Stanley Foundation.

Mar. 5: "Economic Pluralism and Development."

Mar. 12: "Central America—A Vietnam Veteran's View."

Mar. 19: "The Roots of World Hunger."

Mar. 26: "Blowing the Whistle."

Apr. 2: "Alternative Futures."

Apr. 9: "Working for Human Rights—Amnesty International."

**Senior Sound-Off**  
11:30 a.m.

From the Division of Aging: Percy Devine, Marge Drury and Dolly Young rotate in addressing issues and questions on the golden years of life.

**Fairmenist Revolution**  
12 noon

Host Mack Gift explores the consciousness towards humanism, the

presentation of letters and interviews of her life and political development. Part I.

Apr. 17: "Part of My Soul Went with Him," Part II.

Apr. 24: "Part of My Soul Went with Him," Part III.

**Lunch Encounter**  
11:30 p.m.

Mar. 6: "The Owl's Nest: Tish Sommers." An interview with the founder of O.W.L., about problems women face in later years.

Mar. 13: "Women At Sea." Women working on whaling ships, fishing boats, tankers, and other jobs.

Mar. 20: "Thinking Out Loud" #12: Breathing Deep: Wilderness and the American Mind."

Mar. 27: "Brown Bag Theatre" Lesbian women talk and read. One hour.

Apr. 3: "Hispanic Women Poets."

Apr. 10: SPECIAL: "A Palestinian-Israeli Dialogue." One of the most heated workshops at the Nairobi conference brought together Mary Khass, a Palestinian activist from the Golan, and Lisa Blume, a vocal member of the Israeli New Peace Movement. A rare and unusual look at women's methods at work in negotiating for peace.

Apr. 17: "That Was All Done By Women," part I, Home Life and Ethnic Identity.

Apr. 24: "That Was All Done By Women," part II Work and Community Life.

**Lunch Encounter**  
12:00 noon

Mar. 6: A local member of OWL talks.

Mar. 13: To be announced.

Mar. 20: To be announced

Mar. 27: "Brown Bag Theatre" continues.

Apr. 3: Local Hispanic women in the arts.

Apr. 10: "Palestinian-Israeli Dialogue" continues.

**New Dimensions Radio**  
12:30 p.m.

A rebroadcast of Sunday's 9 p.m. program.

**Maritime Rites**  
1:30 p.m.

A series of ten environmental concerts for radio composed by Alvin Curran and produced by Alvin Curran and Melissa Coull. The series features the eastern seaboard of the U.S. as a musical source in collaboration with improvised musical performances by ten distinguished artists in the American New Music scene today.

Mar. 13: Leo Smith, solo mixed with the sounds of boats passing through Wood's Hole, Mass.

Mar. 20: Pauline Oliveros mixed with a whistle buoy, a three-toned gong, and foghorns.

Mar. 27: Steve Lacy, saxophonist with foghorns.

Apr. 3: Clark Coolidge, poet, readsat the background of foghorns.

Apr. 10: Joseph Celli, oboist, English horn and mukha veena player mixes with plovers, a bell buoy, loons, peepers, frogs, foghorns, and a radio room.

Apr. 17: Jon Gibson, soprano saxophonist against the foghorns of Chesapeake Bay, Long Island, and the Delaware Bay.

Apr. 24: Malcolm Goldstein, violinist, mixes with bell buoys, seals, eider ducks, and foghorns.

**P.A. 91**  
7 p.m.

Mar. 6: *Thinking Out Loud* #12: Breathing Deep: Wilderness and the American Mind."

Mar. 13: SPECIAL: "The Star Wars Controversy" see separate ad.

Mar. 20: "Open Secrets: Technological Transfer, National Security, and the First Amendment."

Mar. 27: "Counterforce: The Nuclear War Fighting Strategy."

Apr. 3: *Thinking Out Loud* #13: "Breathing Deep: Wilderness and the American Mind." part II

Apr. 10: "You Can't Kill The Spirit"—women in the peace movement.

Apr. 17: "Peace Detectives," part I—Positive responses to living on a threatened planet.

Apr. 24: "Peace Detectives," part II.

**FRIDAY**

**Morning Light**  
8:30 a.m.

"In Black America," views and insights of today's society through the eyes of black America.

**Lunch Encounter**  
11:30 a.m.

Mar. 7: "The Global Gathering of Women."

Mar. 14: Utah Issues with Bill Walsh.

Mar. 21: "African Women Refugees."

Mar. 28: "Native American Women: Keepers of the Tradition."

Apr. 4: To be announced.

Apr. 11: Utah Issues with Bill Walsh.

**Lunch Encounter**  
12 noon

KRCL's weekly News Magazine.

**La Voz De La Gente**  
12:30 p.m.

Host Robert Michael Archuleta with different guests about issues, concerns, activities and interests of the local Hispanic community.

- Mar. 27: Steve Lacy, saxophonist with foghorns.
- Apr. 3: Clark Coolidge, poet, readsat the background of foghorns.
- Apr. 10: Joseph Celli, oboist, English horn and mukha veena player mixes with plovers, a bell buoy, loons, peepers, frogs, foghorns, and a radio room.
- Apr. 17: Jon Gibson, soprano saxophonist against the foghorns of Chesapeake Bay, Long Island, and the Delaware Bay.
- Apr. 24: Malcolm Goldstein, violinist, mixes with bell buoys, seals, eider ducks, and foghorns.

**Lunch Encounter**  
11:30 p.m.

Mar. 6: "The Owl's Nest: Tish Sommers." An interview with the founder of O.W.L., about problems women face in later years.

Mar. 13: "Women At Sea." Women working on whaling ships, fishing boats, tankers, and other jobs.

Mar. 20: "Thinking Out Loud" #12: Breathing Deep: Wilderness and the American Mind."

Mar. 27: "Brown Bag Theatre" Lesbian women talk and read. One hour.

Apr. 3: "Hispanic Women Poets."

Apr. 10: SPECIAL: "A Palestinian-Israeli Dialogue." One of the most heated workshops at the Nairobi conference brought together Mary Khass, a Palestinian activist from the Golan, and Lisa Blume, a vocal member of the Israeli New Peace Movement. A rare and unusual look at women's methods at work in negotiating for peace.

Apr. 17: "That Was All Done By Women," part I, Home Life and Ethnic Identity.

Apr. 24: "That Was All Done By Women," part II Work and Community Life.

**Lunch Encounter**  
12:00 noon

Mar. 6: A local member of OWL talks.

Mar. 13: To be announced.

Mar. 20: To be announced

Mar. 27: "Brown Bag Theatre" continues.

Apr. 3: Local Hispanic women in the arts.

Apr. 10: "Palestinian-Israeli Dialogue" continues.

**New Dimensions Radio**  
12:30 p.m.

A rebroadcast of Sunday's 9 p.m. program.

**Maritime Rites**  
1:30 p.m.

A series of ten environmental concerts for radio composed by Alvin Curran and produced by Alvin Curran and Melissa Coull. The series features the eastern seaboard of the U.S. as a musical source in collaboration with improvised musical performances by ten distinguished artists in the American New Music scene today.

Mar. 13: Leo Smith, solo mixed with the sounds of boats passing through Wood's Hole, Mass.

Mar. 20: Pauline Oliveros mixed with a whistle buoy, a three-toned gong, and foghorns.

Mar. 27: Steve Lacy, saxophonist with foghorns.

Apr. 3: Clark Coolidge, poet, readsat the background of foghorns.

Apr. 10: Joseph Celli, oboist, English horn and mukha veena player mixes with plovers, a bell buoy, loons, peepers, frogs, foghorns, and a radio room.

Apr. 17: Jon Gibson, soprano saxophonist against the foghorns of Chesapeake Bay, Long Island, and the Delaware Bay.

Apr. 24: Malcolm Goldstein, violinist, mixes with bell buoys, seals, eider ducks, and foghorns.

**P.A. 91**  
7 p.m.

Mar. 6: *Thinking Out Loud* #12: Breathing Deep: Wilderness and the American Mind."

Mar. 13: SPECIAL: "The Star Wars Controversy" see separate ad.

Mar. 20: "Open Secrets: Technological Transfer, National Security, and the First Amendment."

Mar. 27: "Counterforce: The Nuclear War Fighting Strategy."

Apr. 3: *Thinking Out Loud* #13: "Breathing Deep: Wilderness and the American Mind." part II

Apr. 10: "You Can't Kill The Spirit"—women in the peace movement.

Apr. 17: "Peace Detectives," part I—Positive responses to living on a threatened planet.

Apr. 24: "Peace Detectives," part II.

## Celebrate National Women's Month!

# NEWS FOCUS

"Donna's had a long history of working with a lot of diverse people," Station Manager John Greene points out. Her impact on the station's development is especially felt in the area of minority participation in the station, he says. "She's largely responsible for the various-voices flavor of the station, through her efforts to encourage the participation of ethnic minorities and women."

Donna's focus on providing a voice to different populations in our community continues with the Newsmagazine. "We want to hear different people's perceptions," she says. "That's part of our mission. Community radio exists to provide that alternative." Reporters will continue to seek the views of people of color, the handicapped, the elderly, youth, and those with alternative lifestyles or different political perspectives.

"If you listen to commercial media, you'll hear practically the same things on each channel. There are the same stories, presented the same way, even in the same order. It's insulting when we're given only one side of the

## KRCL's Newsmagazine will provide a "place where more free ideas are exchanged... intelligent commentary from a totally alternative angle."

story," Donna points out. "We plan to allow people to make up their own minds."

Resources for the Newsmagazine are meager. "Wire service" is still what volunteers do with the station's few portable recorders in a pinch, and, if you can't find the "news room" at KRCL, you're not alone. However, a chalkboard and a few expandable file folders are helping to hold story ideas and assignments together, and Station Engineer Lewis Downey is sprucing up the station's sound equipment. He's also adding nifty doodahs to help reporters actualize those actualities. A "wish list" for the Newsmagazine includes more portable sound equipment, as well as a typewriter accessible at all hours for

reporters.

Donna hopes to offset the station's sparse equipment resources with the talents and energy of "our main asset—the volunteers." "They're the backbone of community radio," she says, "and we'll need to do a lot of footwork and telephone work."

Response from volunteers has been "great," Donna says, and she expects it to grow. More than 25 volunteers have stepped forward to contribute to the Newsmagazine: Cindy Adams, Barbara Bernstein, Tom Blackwood, Deena Brazzy, Babs DeLay, Pat Fenderson, Carole Gallagher, Chris Gittins, Barb Guy, Marc Hoenig, Dave Iverson, Deborah Levine, Lisa Mace, Lynne McCue-Hamilton, Ted McGlone, Sandra McIntyre, Becky Moss, Kevin Murphy, Hang

Nguyen, Terinell Pelley, Jean Reagan, Nini Rich, George Ricker, Jo Roach, Mark Smith, and Brian Vanitsky. Mark Jackman is composing original theme music for the show.

"This will pull in new volunteers who are not primarily interested in music," Donna claims. She expects a bigger response for the news and public affairs training workshops to be conducted this April or May. She stresses that the show could benefit from the participation of even more volunteers, "especially people of color." And a little encouragement in the form of on-air promotion by other programmers or response from interested listeners would give a boost, too, she says.

As KRCL takes on local news, how will "your only news alternative" stack up against the high-tech coverage of the commercial media? The station has no real competitors, Donna claims. "No one is doing what we're doing," she says. "We're in a class by ourselves."

# INS & OUTS

Volunteer activities at a glance..... by Lynne Van Dam and Cathy Siegel

Our brand new "Skills Bank" book is now available for staff and volunteers. In case you're wondering what the "#?+!" is a skills bank book, it just happens to be a very valuable tool. Thanks to Tom Blackwood, Bill Comlos, Dave Iverson and Sandra McIntyre, we now have the various and sundry talents of our melting pot group of volunteers neatly cataloged as to what and when they want to give of their specialties and time. If you're not in the book and want to be, please contact one of the above-named folks.

### Heavy Breathing

January Desertaire, featuring the Desertbreath Theatre of Mark Cantor, Carolyn Wood, Steve Rasmussen and Val Austin, was a success as usual. Many thanks go to those who helped in the engineering. George Ricker did the air mix, Mark Jackman recorded the show in Master Control, Ron Ward was the stage engineer and Tom Goodwin did the house mix.

### Thanks

Muchas Gracias to Michael Kinney and Warren Gerritsen of the Pioneer Memorial Theatre Scene Shop for refurbishing and repainting the tape machine cabinets. Thanks also to Dana Remhild.

### Clean, Clean, Clean

KRCL is about to undergo a much needed and anticipated face lift. The station will be completely repainted and recarpeted. The new look will be ready for all to see by Spring Radiothon.

### Ta-Ta

It seems we've lost quite a few volunteers in the past couple months. Greg Young has gone to seek fame and fortune with a band in L.A. Ray Larsen will continue the Nightmare. Ken Meyer tumbled off leaving Audio Gym in the air. Brad Charon and Frank Goodbold both from Radio Libre have bid us a fond adieu; Brad to teach in the Jordan School District and Frank to attend to a new business. Omel Contreras departed from La Voz del Pueblo to a new job in California. Brent Burdette has taken a leave from Beat the Rooster, leaving Dave Bowyer as the sole host. Maggie Laun leaves This Feminine Position for ??? After six years at KRCL, Perry Shepard has taken a leave from Thursday Drive Time to give full attention to his business and family. Elena Gonzales has left Musica Latina to concentrate on school and her job, and though Al Sherwood has left Grand Larceny in search of much needed sleep for the long work week, he will continue with the Central America Update team.

### Nice To Have You

For all the folks we've had to say goodbye to, there are a number of people new to the KRCL line-up. John Van Den Berghe and Mark Palmer have taken over the Radio Libre show on Monday from 2:00 to 4:00 p.m. Ed Bagley's Grab Bag can now be heard from 11:30 p.m. to 1:30 a.m. Monday nights. Lisa Lucero has joined Julie Lueders as co-host of Women or Nothing, Tuesday from 9:00-11:30 a.m. Oscar Figueroa has taken over hosting La Voz del Pueblo from 12:30-2 p.m. Tuesday. Cathy Siegel has broken into the Menage a Musique spot with Tapestries on Tuesday from 2:00-4:00 p.m., as Bruce Saffron has taken his show to Thursday Drive Time. Laurie Bennett will alternate with Cindy Adams on This Feminine Position, Thursday from 9:00-11:30 a.m. Juan Gonzalez has rejoined KRCL for Musica Latina Thursday from 7:30-9:30 p.m. The first Thursday night of each month Karl Gustav Wahlund and Leslie Foster will bring Scandinavian music to the Utah Slavia program. And Maureen Mooney has teamed up with George Ricker to host Friday Breakfast Jam.

# DESERTAIRE



Jarmon, Kingston, Wesson and Smith  
ACOUSTIC JAZZ

New Date  
Sunday, March 16  
7-9 p.m.

AND...

Sunday, April 27  
OLD TIME FIDDLELING  
AND SONGS  
The Buckle Busters  
7-9 p.m.

AT  
THE PAINTED WORD  
401 So. 400 West

## SUPPORT The Alternative

Name \_\_\_\_\_ All Contributions Are  
Address \_\_\_\_\_ Tax-Deductible. Mail to:  
City \_\_\_\_\_ State \_\_\_\_\_ Zip \_\_\_\_\_  
Telephone \_\_\_\_\_

### MEMBERSHIP DUES (Annual)

- \$15-Low-income, Student, Elderly
  - \$20-Supporting (regular)
  - \$30-Supporting Plus KRCL T-Shirt!
  - \$50-Sustaining (may be paid \$10/month) Plus KRCL T-Shirt
  - \$100 (or more)-Patron (may be paid \$25/month) Plus KRCL T-Shirt.
  - New Subscription
  - Renewal/Addition
- T-Shirt Size (S) (M) (L)

KRCL Q1FM

Listener's Community Radio of Utah  
208 WEST 800 SOUTH  
SALT LAKE CITY, UTAH 84101  
TELEPHONE 801-363-1818

**Intermountain**  
guitars mandolins fiddles books, kits  
banjos hand-made instruments accessories  
Master Craftsman Rentals Lessons  
712 EAST FIRST SOUTH, SALT LAKE CITY, UT 84102  
(801) 322-4682  
10 AM-6 PM, MONDAY thru SATURDAY

**SMOKEY'S RECORDS**  
1515 S. 15th East  
Salt Lake City, Utah  
84105  
(801) 486-8709

## Three Years Ago This March, U.S. Defense Policy Dramatically Changed. "The Stars Wars Controversy"

...is a documentary report on the implications of President Reagan's Strategic Defense Initiative. Perhaps no other issue in recent history has sparked such a turbulent debate, or captured the headlines as often. Here is a radio documentary that penetrates behind the scenes. It takes you inside the White House, the Pentagon and a major U.S. weapons lab for exclusive interviews with the top SDI leadership. The "Star Wars Controversy" focuses upon SDI's impact on arms control, US/Soviet relations, the economy and relations with our allies. The program also explores alternative defense policies that would cost less than Stars Wars and deliver a safer world.

One hour special. Produced and distributed by Pacifica Radio and The Foundation for the Arts of Peace.

Air date: Thursday, March 13, 1986 at 7:00 pm, on KRCL.



dedicated to the healthy enlivening of the Wasatch Front

Discover the richness and diversity that is growing in our own backyard. Read Catalyst Quarterly.

the arts — business — children — education — ecology — food and nutrition — goods for growth — health, healing & bodywork — movement — psychic arts — psychology, therapy/counseling — spiritual practices — time out and travel — women

Free at newsstands. Or subscribe!

Spring edition distributed March 7th

I enclose \$5 for one year of Catalyst Quarterly.

Name .....

Address .....

Send to:  
Catalyst Quarterly  
140 McClelland St.  
Salt Lake City, UT 84102

**THE TEPHR**

**D.B. Cooper's**

**HARVEY'S**  
Piano Music & Prime Rib

the Salt Lake Roasting Co. & Cafe  
400 South 249 East  
Salt Lake City, Utah 84111  
363-7572

**STAR DATE**  
The Astronomy Radio Series

**Coyote Bill's**



**Sunday**

6 to 7 a.m.  
**Scooba Dooba**  
(continues from Saturday)  
Hamamoto presents an assortment of oddities and niceties during the wee hours.

7 to 10 a.m.  
**Living The Circle of Life**  
Jim Bilagody with Native American music, news and information. (Donna Land hosts the first Sunday of each month.)



10 a.m. to 2 p.m.  
**Sagebrush Serenade**  
Music to ease you from your morning cup through your Sunday afternoon. Manageable folk & rock with a country flavor with Rick Summers. Natalie Atherton sits in once a month.

2 to 5 p.m.  
**Bluegrass Express**  
Join the Flinners—Papa Bob and sons Matt and Rex—for the best in bluegrass; music that is at the root of a lot of the country and folk tunes popular today.

5 to 6 p.m.  
**Greek Hour**  
John Shilaos and Mike Katsan host.

6 to 7 p.m.  
**Voice of Polynesia**  
Music and information from the Pacific islands.

7 to 9 p.m.  
**Nexus**  
New Age Music with John Schellinger.

9 to 10 p.m.  
**New Dimensions**

10 to 11 p.m.  
**Hearts of Space**  
The best of the new electronic and electro-acoustic space music.

11 p.m. to 1 a.m.  
**Tentacles**  
Unique music from the avant garde, including jazz, new wave, rock and electronic, with host Kurt Setzler.

1 to 3 a.m.  
**Music**

3 to 6 a.m.  
**Broken Mirrors**  
Your host Click Dark pumps literary intrigue into the bloodstream on high energy Rock 'n Roll to create a method to their madness.

**Monday**

6 to 8:30 a.m.  
**Breakfast Jam**  
A mix of country, folk, rock and a sprinkling of blues—goes down well with coffee and toast. Host: Lisa Mace.

8:30 to 9 a.m.  
**Morning Light**  
"Consider the Alternatives"—global concerns.

9 to 11:30 a.m.  
**Le Cafe Folk**  
Contemporary folk music with a touch of tradition hosted by Donna.

11:30 a.m. to 12 noon  
**Our Arts**  
With Marilyn Scharine, Carlie Jimenez or Desiree Mays.


12 noon to 12:30 p.m.  
**Concerning Gays & Lesbians**  
With Mickey & Dean.

12:30 to 1 p.m.  
**Cambridge Forum**  
Public affairs that focuses not on passing headlines but on the more permanent problems—the news behind the news.

1 to 2 p.m.  
**Reggae Beat**  
Hosts Roger Steffens and Hank Holmes present the best in new releases, yet to be released studio recordings, information and interviews with reggae artists.

2 to 4 p.m.  
**Radio Libre**  
Popular music from the French-speaking world, plus news of the French community (with English subtitles) hosted by John Van Den Bergh and Mark Palmer.

4 to 6:30 p.m.  
**Drive Time Magazine**  
Lynne Van Dam and John Greene alternate as hosts, each with an eclectic blend of rock, sweet sounds and important information. Note the segues.



6:30 to 7 p.m.  
**Pacifica News**

7 to 7:30 p.m.  
**Conversations from Wingspread**

7:30 to 9:30 p.m.  
**Great Basin Blues**  
The best in Blues, N.Y. to L.A., Texas to Chicago. Blow away them good old Monday Blues, with your host Brian Kelm.

9:30 to 11:30 p.m.  
**Just The Blooze**  
Blues continue into the evening with Dave Spencer.

11:30 p.m. to 1:30 a.m.  
**The Grab Bag**  
Join host Ed Bagley for a pleasant mix of rock from the Sixties, Seventies and Eighties; chosen at random from the grab bag.

1:30 to 3:30 a.m.  
**Music**

3:30 to 6 a.m.  
**Celestial Seasonings**  
Spice your early morning with a gentle mix of music from folk to rock, served by your host Terinell Pelley.

**Tuesday**

6 to 8:30 a.m.  
**Breakfast Jam**  
Contemporary and mainstream jazz mixed with light rock to suit your morning mood. Hosted by Tom Blackwood.

8:30 to 9 a.m.  
**Morning Light**  
"First Person Radio"—Native American weekly news.

9 to 11:30  
**Women or Nothing**  
Music and information from a woman's perspective—that of Julie Lueders or Lisa Lucero.

**Community Notes**  
Rotates among Terry Tempest Williams, Shirley Stevens and Karen Bowers, and representatives of Utah Legal Services.

12 noon to 12:30 p.m.  
**Handicapped**  
With your host Linda Reeder.

12:30 to 2 p.m.  
**La Voz Del Pueblo**  
Music for the people with Enfoque Nacional at 1:00 p.m. in Spanish. Host—Oscar Figueroa.

2 to 4 p.m.  
**Tapestries**  
Cathy Siegel weaves a blend of folk, rock, and jazz to ease you through a Tuesday afternoon.

4 to 6:30 p.m.  
**Drive Time Magazine**  
Dan Maryon picks up your drive with rhythm—reggae and ska plus—as he informs you of local happenings.

6:30 to 7 p.m.  
**Pacifica News**

7 to 7:30 p.m.  
**Radio Arts**

7:30 to 9:30 p.m.  
**Generic Radio**  
Not really. The playlist reads: reggae, new wave, rockabilly and new music. Programmed by Barb Guy.



9:30 to 11:30 p.m.  
**Beat Crazy**  
Starting off with a scream—new wave and assorted nuts with Andy Trauba. So, c'mon cats! Let's go beat crazy!

11:30 p.m. to 1:30 p.m.  
**Mission Impossible**  
The agents: George Alex and Bob Bedore. The mission: to play two hours of progressive music. Impossible?

1:30 to 3:30 a.m.  
**Winds of The Old Days**  
Folksy, bluesy rock... get out your incense candles. Hosted by Sarah.

3:30 to 6:00 a.m.  
**Beat The Rooster**  
Join Dave Bowyer each week for a fine blend of true rock, comedy and trivia.

**Wednesday**

6 to 8:30  
**Breakfast Jam**  
Jim Shelton or Erik Kingston will make waking a pleasure with a blend of jazz and folk music designed for the morning.

8:30 to 9 a.m.  
**Morning Light**  
"Common Ground"—international issues.

9 to 11:30 a.m.  
**Jazz Quart**  
Mike Anderson helps you appreciate jazz. Nothing to indicate it's midweek or midmorning—just good jazz.

11:30 a.m. to 12 noon  
**Senior Sound Off**  
With Dolly Young, Percy Devine or Marj Drury.

12 noon to 12:30 p.m.  
**Fairmenist Revolution**  
With Mack Gift.

12:30 to 2 p.m.  
**Sojourns**  
International contemporary and traditional music. Host: Lewis Downey.

2 to 4 p.m.  
**Solo Flight**  
Host Nick Gioello emphasizes the art of guitar music: solo and lead, acoustic and electric.



4 to 6:30 p.m.  
**Drive Time Magazine**  
Babs DeLay focuses all her energy into a tight mix, with dance music, Weekend Entertainment and issues.

6:30 to 7 p.m.  
**Pacifica News**

7 to 7:30 p.m.  
**Radio Arts**

7:30 to 9:30 p.m.  
**Generic Radio**  
Old rock and new rock, accentuated with rockabilly, reggae and whatever is handy. Hosted by Dave Santivasi. It may be habit-forming.

9:30 to 11:30 p.m.  
**Night Vinyl**  
Host Dave Jacobs combines a blend of 60s & 70s rock & folk classics rounded out with the latest additions to bring you a tasty way to end a Wednesday.

11:30 to 1:30 a.m.  
**Altered States**  
Dave Iverson serves as tour guide for exploring acoustic, electric and keyboard oriented rock plus other oddities just for fun.

1:30 to 3:30 a.m.  
**Eternity Spin**  
A rock 'n roll journey into the mystic featuring a unique mix of styles bound together with the spirit of magic and adventure. Hosted by Gary Allen.

3:30 to 6 a.m.  
**Open Doors**  
Glenn hosts an eclectic rock program that spans a few decades, while keeping you mindful of the sounds of reggae.

**Thursday**

6 to 8:30 a.m.  
**Breakfast Jam**  
Ease into the morning with blends of rock, folk, jazz and other assorted goodies with your host Jerry Schmidt.

8:30 to 9 a.m.  
**Morning Light**  
"The Third World"

9 to 11:30 a.m.  
**This Feminine Position**  
Cindy Adams or Laurie Bennett bring you music by & for women. Interviews at 10:00 on a wide variety of topics pertinent to women.

11:30 to 12:30 p.m.  
**Lunch Encounter**  
Local, national and international public affairs.

12:30 to 1:30 p.m.  
**New Dimensions Radio**  
Refer to Public Affairs schedule.

1:30 to 2:00 p.m.  
**Maritime Rites**  
Refer to Public Affairs schedule.

2 to 4 p.m.  
**Daydreams**  
Modern Impressionism with Mark C. Jackman.

4 to 6:30 p.m.  
**Drive Time Magazine**  
Host Bruce Safran.

6:30 to 7 p.m.  
**Pacifica News**

7 to 7:30 p.m.  
**Political Issues**

7:30 to 9:30 p.m.  
**Musica Latina**  
Presented by Juan Gonzales featuring Latin music in a variety of genres from the South American traditional flutes to the American Latin pop scene.

9:30 to 11:30 p.m.  
**Fret 'N Fiddle**  
Traditional folk music from here and abroad, depending on your host, who could be Lewis Downey, Pete Tinker, Paul Truex or Mark Cantor. You'll get a variety.

11:30 p.m. to 1:30 a.m.  
**Utah—Slavia**  
Utah's eastern Europe heritage lives! Proving the beauty of diversity we focus on the music of Yugoslavia, provided by Mladen Maric, Craig Miller and friends. Scandinavian music is featured the first Thursday of every month, hosted by Karl Gustav Wahlund and Leslie Foster.

1:30 to 3:30 a.m.  
**Mr. Baggins' Show**  
Join host Dan Bennaducci as he spins the early morning rock 'n roll with a smile.

3:30 to 6:00 a.m.  
**Funtime**  
Rock 'n roll... funtime on KRCL with host John Dean.

**Friday**

6 to 8:30 a.m.  
**Breakfast Jam**  
Motown, R & B, soul, blues and jazz—music to make you move. Hosted by George R. and Maureen Mooney.

8:30 to 9 a.m.  
**Morning Light**  
"In Black America"

9 to 11:30 a.m.  
**Attitude Adjustment Session**  
Chuck Bradley does some soul adjustment to get you ready for the weekend.

11:30 a.m. to 12:30 p.m.  
**Lunch Encounter**  
Local, national and international public affairs.

12:30 to 1 p.m.  
**La Voz de la Gente**  
Host Robert Archuleta

1 to 2 p.m.  
**S.O.A.P.**  
Sounds of a party. From mellow-soul to scratching. First Friday of each month, listen for the top five soul hits, with host Sam Smith.

2 to 4 p.m.  
**Latin Connection**  
Latin jazz, salsa, Latin rock with some old rhythm & blues thrown in—the entire connection with host Robert Velasquez.

4 to 6:30 p.m.  
**Drive Time Magazine**  
Professor of R & B, Larry Ficks, presents rhythm and blues, old rock and roll, and social issues.

6:30 to 7 p.m.  
**Pacifica News**

7 to 9 p.m.  
**KRCL Jukebox**  
Inspector Bill Komlos brings you music from the 50s, 60s and 70s to blow your mind, but not your cool!

9 to 11 p.m.  
**The G Men**  
The most arresting rock music to be found. Hosts Chris Gittins and Hugh Garner

11 p.m. to 2 a.m.  
**Revolutions**  
Andy Langton brings a mix of classic rock and roll, Grateful Dead, and Avant Garde.

2 to 4 a.m.  
**Variables**  
Electronic, holistic, new age music brought to you by Thom Odom & Eric Gisler.

4 to 6 a.m.  
**Gospel Connection**  
Contemporary gospel that encompasses all categories of music. Tune in to Carol and Marvin Dixon for your early morning start.

**Saturday**

6 to 7 a.m.  
**Gospel Connection**  
(continues from Friday)  
Carol and Marvin Dixon are still going strong with more gospel.

7 to 10 a.m.  
**Asian Chimes**  
Music and information from the communities of Cambodia, the Philippines, China and Viet Nam. Presented by hosts Chara Souratha, Vic Fernandez, Darrell Young and Hang Nguyen.

10 a.m. to 2 p.m.  
**Sagebrush Serenade**  
From the best known to the least known rock artists of the Sixties, don't miss "one of KRCL's best" with Dale Carlson.

2 to 5 p.m.  
**Smile Jamaica**  
Reggae—the roots, as well as current releases. Join Myron Fairbanks as he takes you through the music of Jah. As an added bonus, "Reggae Beat," the archives of reggae.

5 to 7 p.m. release  
**American Music**  
Genre: Rockabilly. Intent: Pure Entertainment. Hosts: Robert Moss and Violet Ruybal.

7 to 9 p.m.  
**Phono Synthesis**  
Host Jon Bray offers the latest in new wave, rockabilly, punk and dance music.

9 to 11 p.m.  
**No Guarantee**  
Noise punk, avant rock, avant punk. But, no guarantee. Host Ron Ward.

11 p.m. to 3 a.m.  
**Behind The Zion Curtain**  
Synthetic, authentic punk—hard core! Brad Collins is the guilty one who cracks your Saturday nights and Sunday morns with the sounds of the new wave.

3 to 5 a.m.  
**The Nightmare Continues**  
Ray hosts the best of underground metal and punk to break down mindless barriers.

5 to 6 a.m.  
**Scooba Dooba**  
Hamamoto presents an assortment of oddities and niceties during these wee hours.

## Program schedule

	SUNDAY	MONDAY	TUESDAY	WEDNESDAY	THURSDAY	FRIDAY	SATURDAY
6 a.m.	Scooba Dooba						Gospel Connection
7 a.m.		Breakfast Jam	Breakfast Jam	Breakfast Jam	Breakfast Jam	Breakfast Jam	
8 a.m.	Living The Circle Of Life						Asian Chimes
9 a.m.		Morning Light	Morning Light	Morning Light	Morning Light	Morning Light	
10 a.m.		Le Cafe Folk	Women Or Nothing	Jazz Quart	This Feminine Position	Attitude Adjustment Session	
11 a.m.							
12 p.m.	Sagebrush Serenade		Community Notes	Senior Sound Off	Lunch Encounter	Lunch Encounter	Sagebrush Serenade
1 p.m.		Our Arts Concerning Gays Cambridge Forum	Handicapped	Fairmenist Revolution		Le Voz de la Gente	
2 p.m.		Reggae Beat	La Voz Del Pueblo	Sojourns	New Dimensions	S.O.A.P.	
3 p.m.					Maritime Rites		
4 p.m.	Bluegrass Express	Radio Libre	Tapestries	Solo Flight	Daydreams	Latin Connection	Smile Jamaica
5 p.m.							
6 p.m.	Greek Hour	Drive Time Magazine	Drive Time Magazine	Drive Time Magazine	Drive Time Magazine	Drive Time Magazine	American Music
7 p.m.	Voice Of Polynesia	Pacifica News	Pacifica News	Pacifica News	Pacifica News	Pacifica News	
8 p.m.		Wingspread	Radio Arts	Consider The Alternatives	Political Issues		
9 p.m.	Nexus	Great Basin Blues	Generic Radio	Aural Decay	Musica Latina	KRCL Jukebox	Phono Synthesis
10 p.m.	New Dimensions						
11 p.m.	"Hearts of Space"	Just The Blooze	Beat Crazy	Night Vinyl	Fret 'N Fiddle	The G Men	No Guarantee
12 a.m.							
1 a.m.	Tentacles	Music	Mission Impossible	Altered States	Utah-Slavia	Revolutions	Behind The Zion Curtain
2 a.m.							
3 a.m.	Music		Winds of the Old Days	Eternity Spin	Mr. Baggins' Show	Variables	
4 a.m.							
5 a.m.	Broken Mirrors	Celestial Seasonings	Beat The Rooster	Open Door	Funtime	Gospel Connection	The Nightmare Continues
6 a.m.							Scooba Dooba



# Ringling in the Witching Hour

As the evenings draw slowly to a close, the last third of KRCL's 24-hour format commences shortly before the midnight hour and continues on into the early hours of the morning (11:30 p.m.-1:30 a.m. Monday through Thursday, 11:00 p.m.-2:00 a.m. Friday).

It was not so many years ago that most of the television and radio stations here in our state welcomed the wee hours with

naught but a "test tone;" thankfully, continuous programming is now the rule rather than the exception. Still, the listening population for the midnight-to-dawn hours is indeed a smaller group of a more unusual nature than that of the other eighteen hours.

So it is with the "Mighty 91," especially with the myriad programmers who staff these weekly slots. This is as diverse an

assortment of personalities as one could wish for and, as part of the Program Guide's continuing feature of matching the faces to the names of these dedicated volunteers, I am pleased to present the following biographies; the information was gleaned from a series of interviews conducted with each of the staffers during their respective shows, as illuminating and interesting for me as I hope it may be for you.

*Ed Bagley ... that first Beatles record ... did the trick.*



*by John Paul Brophy*

**The Grab Bag**—Host Ed Bagley This 24-year-old English major is what I would consider a "natural" in the business of radio; indeed, it was but recently that Ed switched majors and scrapped his longtime plans for a career in broadcasting. A fascination with turntables as a child has led the personable Mr. Bagley to his current work in the medium where, in addition to his work with KRCL, he also pulls shifts with two of the local commercial stations. A wedding and graduation will most likely result in work related more closely to his major. Says Ed, "KRCL Radio is a nice place to visit, but ..."

Bagley is a veteran, having attended the orientation with Bill "The Inspector" Komlos. Initially sharing a 3-6 a.m. slot with his brother Matt for a while, Ed held down the 1:30-3:30 slot before landing in his current time zone. With the restriction lifted to keep with the blues until midnight, Bagley takes his love of '60s rock and builds a strong show; obviously, that first Beatles record he received as a five-year-old did the trick.

Through a creative use of voice carts Ed Bagley adds clever asides to his selections and gives the illusion of strange guests in the booth. Ed enjoys the production end of working at KRCL, but received a bizarre jolt when he awoke one morning to the sound of his voice via a promo for his show on the air. A love of both comedy and music fuels "The Grab Bag"—a fine way to start the week.

*Freedom to explore unique programming is fostered by KRCL*

**Mission: Impossible**—Hosts Bob Bedore and George Alex "...and now for something completely different..."

Probably more so than any other program, "Mission: Impossible" comes closest to what is known as "talk radio;" George and Bob address their antics to the "late night/early morning mentality" as they put it, with a determined effort to strive for the unexpected.

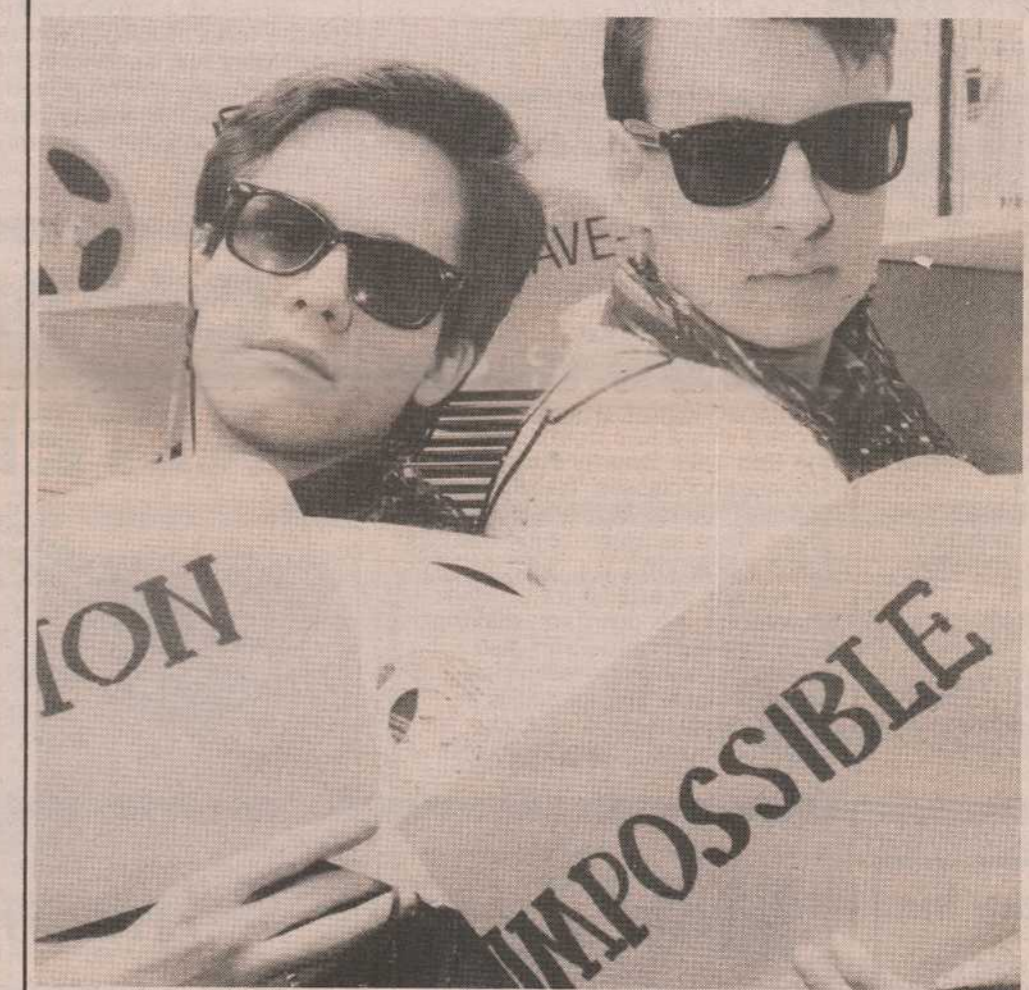
These two friends met in high school some years back, and with a desire to satirize stupidity wherever they found it, decided to put their penchant for lampooning sacred cows on the KRCL airwaves. Starting with the 1:30-3:30 a.m. slot 18 months ago, Bedore and Alex have been underlining their out-of-control routines with some of the hottest of the new wave music. Their extensive musical knowledge comes from paid exposure to the genre—Bedore as a sales man at a local record store, Alex as a disc jockey for a new wave night club.

The response, while negative at first, has become widespread. Callers from Logan and Provo regularly voice their approval, and a former listener now calls frequently from California with tips on the latest L.A. discs.

Bob and George were recently runners-up in an amateur contest at Cartoons (the local comedy nightclub), so they are obviously doing something right. Bits like "Rice Moroni" and "the Khadafy Fashion Show" have been well-received (but you guys gotta get rid of the worn out "Tomato Soup Price Quote") with many in the listening audience trying to top "the weirdness" by phone calls of equal lunacy.

Two different personalities and tastes add variety to the musical selections, and although the show admittedly has been bad on occasion, George and Bob believe their spontaneous approach is good for station awareness and works more often than not. Many fans of "Mission: Impossible" appreciate the musical information, and Alex and Bedore's change in tastes have added a dimension to

continued



*Bob Bedore and George Alex ... with a unexpected, determined effort to strive for the*



Rick Summers

Dave Iverson . . . finding music out of the ordinary.

segments—acoustic guitar, electric guitar, a featured artist, keyboard, then working back into electric guitar to close out the program. Dave likes finding music out of the ordinary, giving a different flavor to well-known bands by concentrating on their more obscure cuts. His favorite artist is probably Nils Lofgren, and he has followed his career closely.

Dave Iverson has had the "Altered States" program for over a year and a half, a slot originally found at 1:30 a.m. and the inheritance of Leo Lettke's show "Rough Mix." He enjoys the time slot, in spite of the difficulty of waking the next morning for his job with a printing company. Sharing his musical knowledge, giving an idea of the artist's background, is one of Dave's emphases. Playing bands not heard on commercial stations and mixing old with new work allows for a view to the musician's progression. It is this freedom to explore unique programming which is fostered by KRCL that Iverson praises.

Dave has a strong commitment to the folks at KRCL, whom he considers his "second family." He is continually learning, and appreciates the quality phone calls from his many listeners with their suggestions.

Give Dave Iverson a listen, and you'll agree with his goal of being "happy to make people happy."

**Utah Slavia**—Hosts Mladen Maric and Craig Miller

Because of their friendship as performers in Salt Lake City's own Folkdance Underground (the second group to have performed live on KRCL in the old Blue Mouse location) these two outgoing gentlemen decided to bring their knowledge of Middle European music to the KRCL airwaves.

Due to the presence of a strong Yugoslavian community here in Utah, Craig and Mladen initially concentrated solely on that country's music. They described their first show as "tentative," but listeners showed a surprising degree of support, resulting in the much broader programming now found on "Utah Slavia." By featuring the music of a different country each week, Maric and Miller have brought to light the little-known variety of their favored music.

The background of these programmers is as interesting as their musical focus: Mladen Maric teaches German at the University.

## CONSIDER THE ALTERNATIVES

The award winning, thought provoking, weekly radio magazine.

Nationally syndicated on over 120 radio stations.

MONDAY at 8:30 a.m.

Rick Summers

that information.

At some pre-KRCL time these two guys accumulated "lots of records, plenty of weird ideas, but no place to express (either)." Bob Bedore and George Alex have certainly managed to change that predicament with their Tuesday show.

**Altered States**—Host Dave Iverson

The third segment of Wednesday evening's "Dave's Night Out" features the talents of Dave Iverson, a 29-year-old music aficionado whose record collection numbers into the thousands.

Dave started becoming seriously interested in rock and roll in elementary school. He had grown up in the shadow of the

influence of his rock-rooted older brothers, and remembers his first album, a birthday gift of Cream's "Disraeli Gears." From listening to the radio in those early days, Iverson developed a fascination that spurred him on to his involvement with KRCL. He first started in production at the station, and was involved in the first public affairs workshop, where his initial project was a fine documentary on the Salt Lake County Drug Counseling classes. Nearly five years of technical production has given Dave as much enjoyment as his DJ position.

Iverson spends a lot of time developing his program, making tape mixes at home and also taping his show for reference and improvement. The format is a varied cross-section of rock-oriented music divided into four

**Memory Inc.**  
1214 Wilmington #102  
Salt Lake City, Utah 84106  
(801) 484-5000

Dont let your phone be a dead ringer!  
Complete phone message management 24 hours a day, for \$20 per mo. Call for a FREE trial!

**In The Mood**  
HAIR DESIGN AND COLOR  
850 EAST 900 SOUTH  
SALT LAKE CITY  
363-3071

**Phillips Gallery**

444 East 200 South  
Salt Lake City, Utah 84111  
801-364-8284

## The songs of America

performed by renowned folk artists

- Pete Seeger
- Sam Hinton
- Faith Petric
- Luci Murphy
- Guy Carawan
- Michael Cooney

Dates Mondays  
Times 10:30 am  
On Le Cafe Folk  
Call letters KRCL FM 91



## Sing Out!

A CELEBRATION OF AMERICAN TRADITIONAL MUSIC

SING OUT! was produced with funds provided by the Corporation for Public Broadcasting through National Public Radio's Satellite Program Development Fund.



Rick Summers

Mladen Maric and Craig Miller . . . bringing you Middle European ethnic music.

Yugoslavian-born, he studied in Austria prior to moving to Utah six years ago at the urging of his brother. From classes in modern dance, he went on to become part of Folkdance Underground, and after a successful tour of Poland (see December/January Program Guide), he is hoping to travel soon to Yugoslavia. Mladen's musical interests include classical—especially Beethoven—as well as rock and roll and old-time fiddling. He received his American citizenship last year, so he should be staying around for a while.

Craig Miller is originally from Florida, and has been in Utah for the past five years. A job with the

Forest Service brought him here, and from his participation with folk dancing in Florida came to be involved with Folkdance Underground. Craig is currently working with the Utah Arts Council in the Folk Arts program on a grant researching ethnic communities in Utah. His musical preferences are in the classical and folk vein, and he is truly appreciative of the community affairs and news programs of KRCL.

Calls from all over the city make it exciting for Craig and Mladen to continue bringing both the commercialized and more ethnic music of Middle Europe to receptive Utah listeners.

**Revolutions**—Andy Langton T.G.I.F., that week-ending phrase of relief, takes on new meaning with Andy Langton's mainstay program "Revolutions."

Along with the second of KRCL's two annual fundraising radiothons and the seasonal change of the weather, Autumn '85 brought a change of title to Langton's three-year-old show. "Time for a change," said Andy, and so "Dead Air" became "Revolutions."

Originally slotted for one year at 1:00-4:00 a.m., Andy combined a technical radio term with a tribute to one of rock and roll's oldest bands in the former name of his show. As part of the tribute, and in response to the multitude of requests for some "Dead air," Langton maintains a tradition of ringing in the witching hour with a long set of Grateful Dead music.

Prior to midnight, Andy plays an hour of sixties rock. Like many KRCL programmers (and listeners) the love of that musical era was the inheritance of older brothers (and sisters). After the Dead set, the "freedom of KRCL's programming" allows Langton to finish off his show with a batch of "surprises," many in the area of his latest musical interests of Avant Garde and "shockability."

In addition to the "mental therapy" of having a show on KRCL, Andy Langton manages to

direct his creativity into the film arena. The 22-year-old student makes movies in his spare time, and has applied to the graduate program at the University of Utah in that medium. Two recent 16 mm works have won awards for Langton—one in last summer's Utah Short Film Festival, where he took the Best Dramatic Narrative, the other a joint venture that netted the Mort Rosenfeld award. He is currently working on a video documentary of KRCL volunteer radio.



Rick Summers

Andy appreciates the diversity of music on KRCL, praising all the shows, especially "Utah Slavia." Strong support of "Revolutions," both through regular calls and the radiothon, has made the program a strong feature in KRCL's list of outstanding radio shows.

Andy Langton . . . finishing off with a batch of "surprises."

*From the Hearts of Space*  
CONTEMPORARY AND TRADITIONAL  
SPACEMUSIC

*Thinking Out Loud*  
THE UTAH HUMANITIES RADIO PROJECT

Breathing Deep: Wilderness and the American Mind

Part 1  
Thursday, March 6, 7:00 p.m.  
Thursday, March 20, 11:30 p.m.

Part II  
Thursday, April 3, 7:00 p.m.

**Carpet Barn**  
SAVE DOLLARS ON EVERY YARD! WITH CARPET AT LOW, LOW PRICES  
We have our own professional installers

- HUNDREDS OF ROLLS ON DISPLAY
- DISCONTINUED PATTERNS
  - SLIGHT IRREGULARS
  - REMNANTS
  - EXPERIMENTAL STYLES
  - VINYL FLOORING
  - OUTDOOR CARPET
  - FIRST QUALITY CARPET
  - POOR MANS ORIENTAL RUGS

COMPLETE SUPPLIES FOR THE DO-IT-YOURSELF EXPERT ADVICE

HOURS MONDAY THRU FRIDAY 10 AM TO 7 PM  
SATURDAY 10 AM TO 6 PM CLOSED SUNDAYS

**973-7046**  
3725 SOUTH REDWOOD ROAD



# Letters

Dear KRCL,  
Just a note to apologize for the late support of my favorite radio station. Just two months ago I became one of the unemployed. Times have been tight, but thank you for bearing with me.  
Keep up all the FANTASTIC programming—I can't name all my favorite programs; it'd take too much room.  
Thank you, again,  
Helene Sill

KRCL,  
I have been enjoying Jeffrey Montague's show (Thinking Out Loud) on your station, and I wanted to write a note saying thanks for having them. My favorite was the show on heroes, but I've enjoyed the others as well. The George Orwell one I like a lot, too. I hope this encourages more such programming—local people and their thoughts on life and culture in general, rather than just local issues.  
Sincerely,  
Susan Taylor

## We're Seeking New Volunteers

Sometime during the month of April, (exact date not yet set) KRCL will be conducting an orientation for persons interested in becoming volunteers at KRCL. At the orientation, we will explore some of the station's history, outline future goals, and find out from participants, how they see themselves contributing.  
We will be looking for those who wish to be trained to do board shifts, (d.j. a music program) produce public affairs programs, or help out in a variety of "off-air" roles. It takes an awful lot of volunteer help to keep a community resource like KRCL alive and thriving. We are very much interested in meeting and training new people who feel they can contribute. Stay tuned to hear exact time and date of the new volunteer orientation.

To Mr. Vic Fernandez,  
I was in Salt Lake City for 1 whole week and I happened to listen to your program called "Radio Filipino." I found it really, really nice and I hope you'll keep up your good work. How I wished the program lasted for at least an hour.  
Anyway, I really enjoyed my vacation in Salt Lake City... especially when I heard Filipino Christmas songs. It lifted up my spirit!  
Good luck to you and your program.  
From,  
Regina Ilagam  
P.S. I hope there's also going to be "Radio Filipino" here in Boston.

Dear KRCL people,  
I am sorry for the tardiness of my pledge—my cash flow ended after the radiothon.  
I really appreciate the programs you broadcast weekly; Breakfast Jam, Revolutions, Daydreams, Saturday & Sunday Sagebrush Serenade, Aural Decay, Night Vinyl, and Altered States.  
Keep up the good work, everyone!!  
Thank you all, for a real good time, Matt Thomas

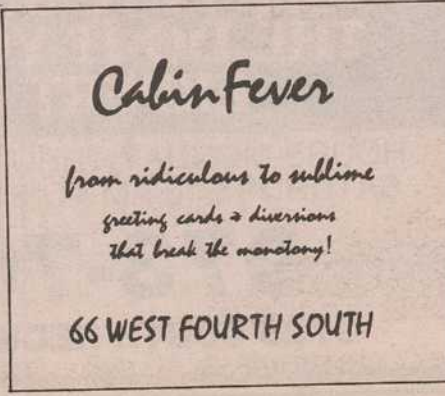
# SHORT FEATURES

<b>Sunday</b>					
Women's News	11:00 a.m.	Wilderness Update	7:00 a.m.	Wilderness Update	10:30 a.m.
Wilderness Update	12 noon	Women's News	10:30 a.m.	In the Public Interest	11:27 a.m.
In the Public Interest	1:00 p.m.	In the Public Interest	11:27 a.m.	Byline	3:57
Environmental Update	3:00 p.m.	Nuestra Onda	8:00 p.m.		
Sunspot	8:00 p.m.				
<b>Monday</b>		<b>Friday</b>			
Nuclear Issues Report	7:00 a.m.	Weekend Entertainment	7:00 a.m.		
Environmental Update	9:55 a.m.	In the Public Interest	11:27 a.m.		
Sing Out	10:30 a.m.	Byline	3:57		
Central America Update	11:00 a.m.	Central America Update	6:00 p.m.		
In the Public Interest	11:27 a.m.	Weekend Entertainment	7:30 p.m.		
Byline	3:57 p.m.				
<b>Tuesday</b>		<b>Saturday</b>			
Central America Update	7:00 a.m.	Nuclear Waste Report	11:00 a.m.		
Women's News	9:55 a.m.	Weekend Entertainment	12 noon		
From A Woman's Perspective	10:30 a.m.	In the Public Interest	1:00 p.m.		
In the Public Interest	11:27 a.m.				
Byline	3:57 p.m.	<b>Daily</b>			
Sunspot	4:30 p.m.	Stardate airs at 8 a.m., 5:30 p.m. & 10 p.m.			
<b>Wednesday</b>					
Nuclear Waste Report	7:00 a.m.	Morning Light			
Sunspot	10:00 a.m.	Monday through Friday 8:30 a.m.			
In the Public Interest	11:27 a.m.	Monday "Consider The Alternatives"			
Nuclear Issues Report	1:55 p.m.	Tuesday "First Person Radio"			
Byline	3:57 p.m.	Wednesday "Common Ground"			
Weekend Entertainment	4:30 p.m.	Thursday "Special Interest"			
		Friday "In Black America"			

## Celebrate National Women's Month



AIKIDO  
SALT LAKE CITY  
(801) 328-1381



Cabin Fever  
from ridiculous to sublime  
greeting cards & diversion  
that break the monotony!  
66 WEST FOURTH SOUTH



WASATCH TOURING  
MOUNTAIN TRAVEL SPECIALISTS  
702 E. 100 S., SLC / 359-9361



RIO GRANDE CAFE  
A FINE MEXICAN CAFE  
RIO GRANDE TRAIN STATION  
455 W. 300 SO.

# Thanks

謝謝 5555555555 merci Faka Faka! Gracias Salamat No 292192 Ahe'hee Cati On Malo ETXAPIE TQ Thank you!

Editor's Note: KRCL is always in the mood to thank someone for their kind support. Because of our multilingual audience, we want to thank all our listeners in just some of the languages spoken on KRCL. From left to right: Chinese, Cambodian, French Samoan, Spanish, Phillipine, Laotian, Navaho, Vietnamese, Tongan, Greek and did you guess? English.

## Thanks to our underwriters

Underwriting a show, a public affairs program or a short feature is a way for businesses or individuals to provide financial support for KRCL. Because KRCL is non-commercial, the monies donated are tax deductible. In exchange for the donation, KRCL broadcasts a brief message which is descriptive in nature and non-promotional. The message is a means for KRCL to recognize this valuable contribution.  
Underwriting is an extremely important layer of financial support for the station. Approximately 15 percent of the current budget is derived from underwriting. The goal is to raise that level to 25 percent.

If you are interested in underwriting a program, please call 363-1818 during working hours and a packet of information will be sent to you. If you are a listener, please support our underwriters.

**Acoustic Music**  
857 East 400 South  
Salt Lake City

**Alternative Lifestyle Telephone Dating Service**  
Salt Lake City

**Cabin Fever**  
66 West 400 South  
Salt Lake City

**Carpet Barn**  
3725 Redwood Road  
West Valley City

**Catalyst Magazine**  
Salt Lake City

**Clayton Oriental Rugs**  
1464 Foothill Drive  
Salt Lake City

**Cosmic Aeroplane**  
258 East 100 South  
Salt Lake City

**Coyote Bills**  
206 South West Temple  
Salt Lake City

**D. B. Coopers**  
19 East 200 South  
Salt Lake City

**Gardiner Distributing**  
554 West 100 South  
Salt Lake City

**Harvey's**  
206 South West Temple  
Salt Lake City

**Hey Now Communications**  
P.O. Box 510312  
Salt Lake City

**In The Mood**  
750 East 900 South  
Salt Lake City

**Intermountain Guitar and Banjo**  
712 East 100 South  
Salt Lake City

**Memory, Inc.**  
1214 Wilmington, Suite 102  
Salt Lake City

**Painted Word**  
401 South 400 West  
Salt Lake City

**Performance Audio**  
2358 South Main Street  
Salt Lake City

**Phillips Gallery**  
444 East 2nd South  
Salt Lake City

**Rio Grande Cafe**  
270 South 455 West  
Salt Lake City

**Salt Lake Roasting Company**  
249 East 400 South  
Salt Lake City

**Smokey's Records**  
1515 South 1500 East  
Salt Lake City

**Sundance**  
Provo Canyon, Utah

**Utah Endowment for the Humanities**  
10 West Broadway  
Salt Lake City

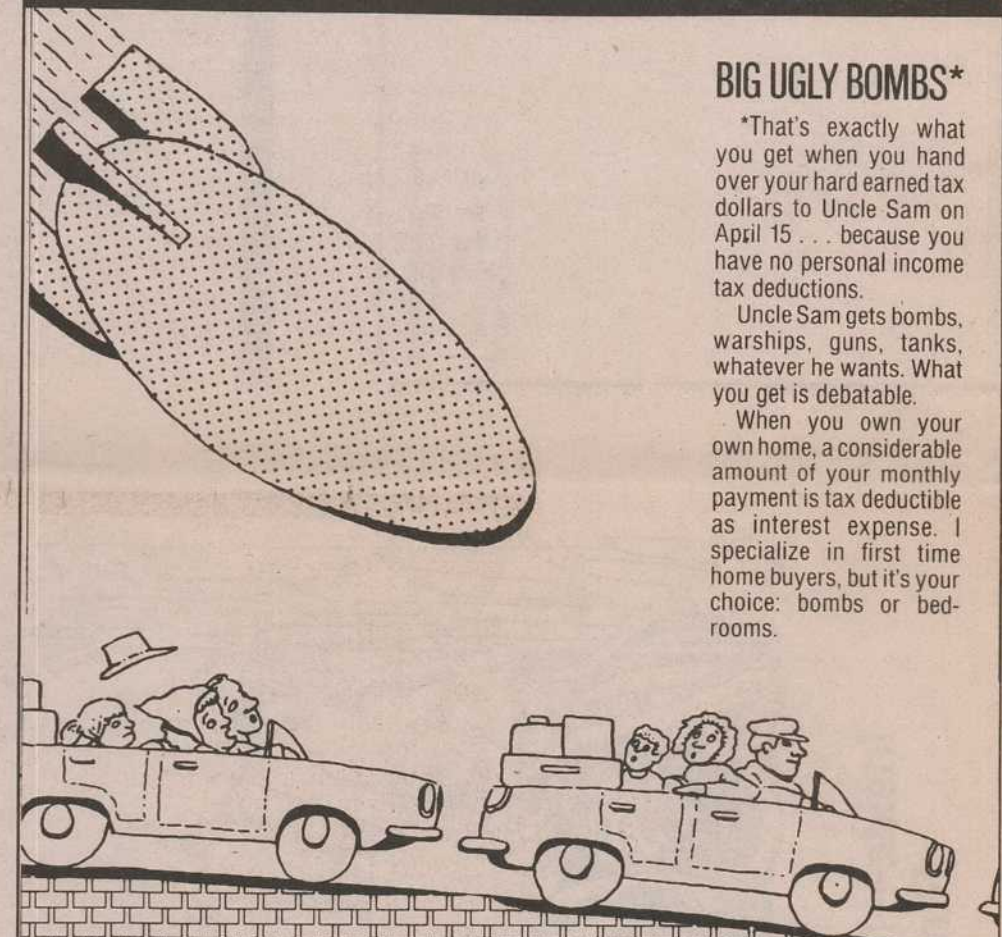
**Utah Museum of Natural History**  
University of Utah  
Salt Lake City

**Wasatch Touring**  
702 East 100 South  
Salt Lake City

**Yengich, Rich, Zaia and Metos**  
72 East 400 South  
Salt Lake City

**The Zephyr**  
301 South West Temple  
Salt Lake City

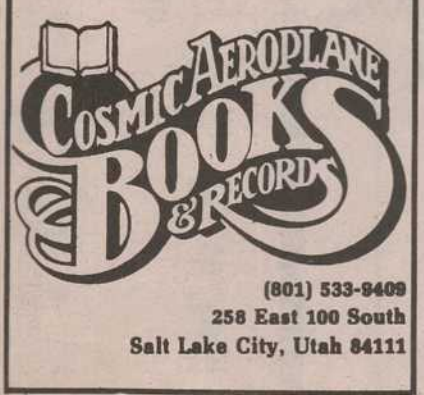
— ATTENTION —  
**SALT LAKE'S ONLY**  
(24 HOURS)  
**ALTERNATIVE LIFESTYLE**  
**TELEPHONE DATING SERVICE**  
— DIAL —  
1-976-4297  
55¢ FIRST MINUTE 35¢ ADD'L MINUTE



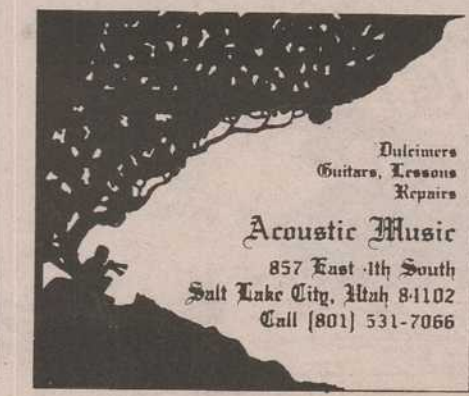
### BIG UGLY BOMBS\*

\*That's exactly what you get when you hand over your hard earned tax dollars to Uncle Sam on April 15... because you have no personal income tax deductions.  
Uncle Sam gets bombs, warships, guns, tanks, whatever he wants. What you get is debatable.  
When you own your own home, a considerable amount of your monthly payment is tax deductible as interest expense. I specialize in first time home buyers, but it's your choice: bombs or bedrooms.

**B.A.B.S.D.E.L.A.Y.**  
a Realtor as unique as her name!  
BERE REGIS REALTY (801) 532-1424



Cosmic Aeroplane still buys and sells used books and records. We pay top dollar for entire collections, sets and individual items. Please call or stop by if we can be of service to you.  
(801) 533-9409  
258 East 100 South  
Salt Lake City, Utah 84111



Dulcimers  
Guitars, Treasos  
Repairs  
**Acoustic Music**  
857 East 11th South  
Salt Lake City, Utah 84102  
Call (801) 531-7066



**Next Month This Offer Is Dead.**  
2-color print on white Hanes Beefy-T  
The Un-Official Utah Shirt  
The T-shirt that Phil Lesh wore at the Parkwest show is now available for a limited time only by mail order. Send check or money order for \$12 with size and address to Spent Offer P.O. Box 510312, Salt Lake City, Utah 84151. Allow 2-3 weeks for delivery.