



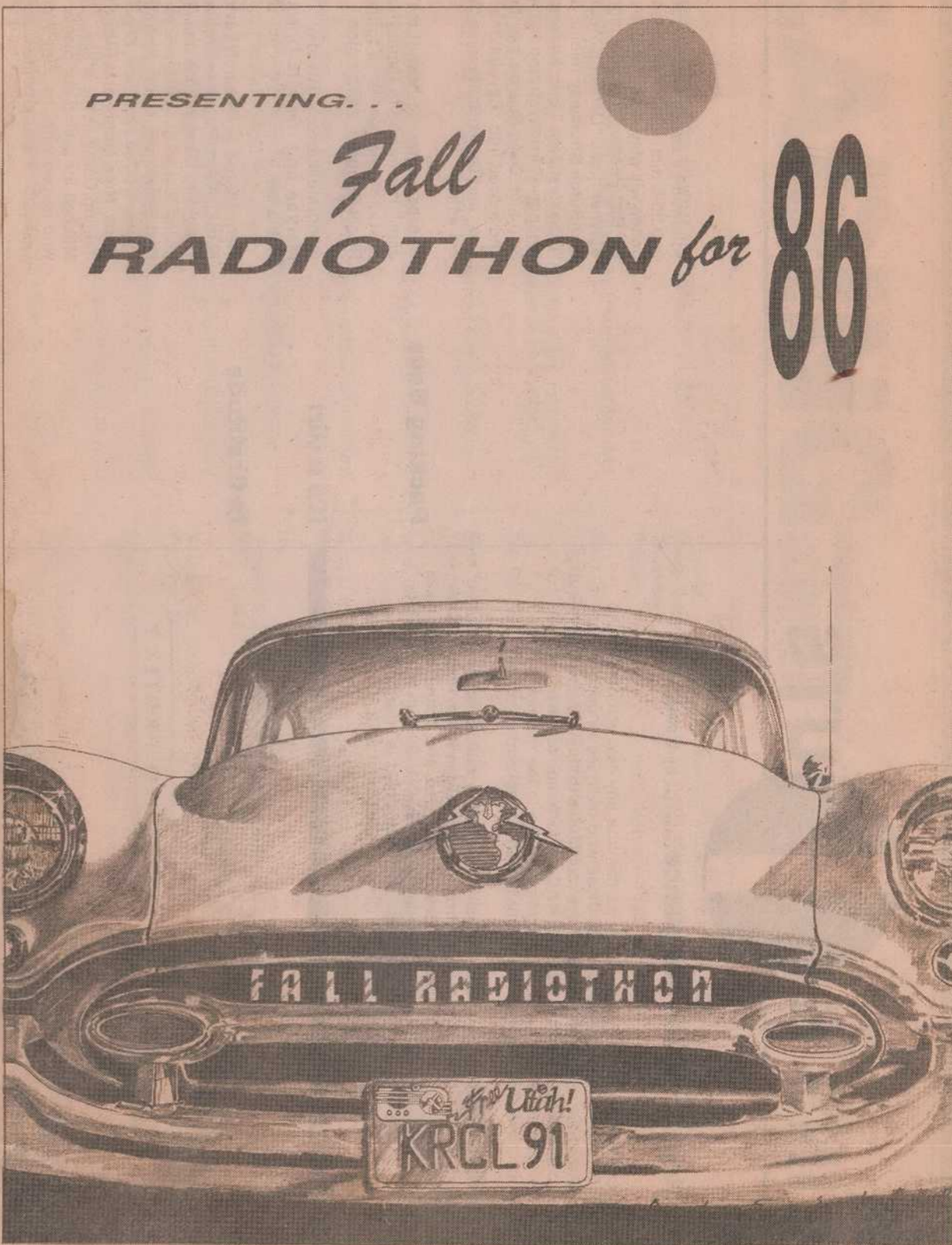
*the Program  
guide accompanies  
any donation over  
\$20.00. Students  
and Senior Citizens  
\$15.00.*

*Radiothon '86*

363-KRCL  
363-1818

**FALL**

**PREMIUMS**  
SKETCHBOOK



208 West 800 South, Salt Lake City, Utah 84101  
Phone (801) 363-1818

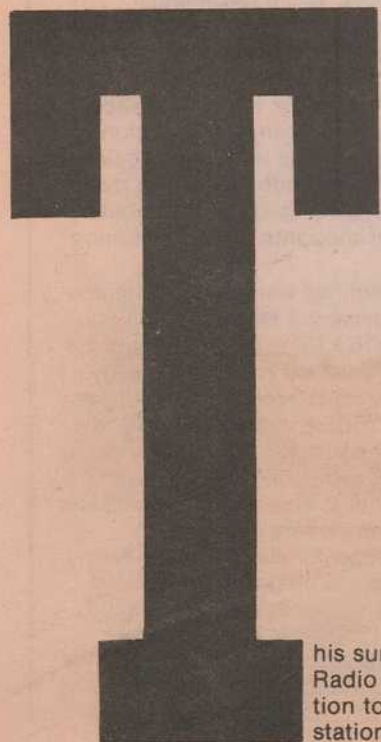
Non-Profit Organization  
U.S. Postage  
PAID  
Salt Lake City, Utah  
Permit Number 3973

Please notify us of any change of name or address.  
The post office will not forward program guides.

# Report to the listener

*Increasing audience size... at what cost?*

*By John Greene, Station Manager*

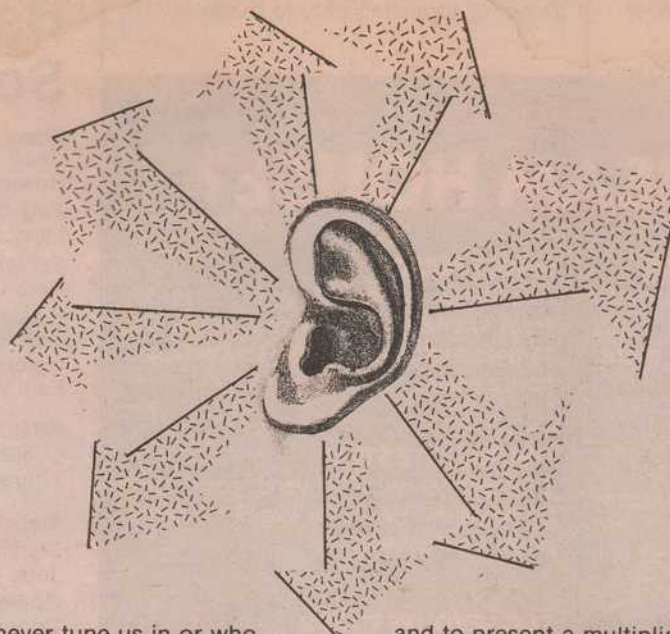


This summer National Public Radio announced its intention to assist public radio stations in "doubling" the size of their listening audiences between now and the year 1990. Though seemingly a lofty goal, radio (non-commercial radio, university stations, community licensees like KRCL, and others) is largely funded by taxpayers through the Corporation for Public Broadcasting, and oftentimes, additionally, by the budgets of the college or university that holds the broadcast license if the station is institutionally affiliated. We are all aware of the budget battles in Congress, and, using the University of Utah as a microcosm, the scarcity of funds for higher education.

A second major source of revenue for public radio usually comes from the listenership, and though techniques for encouraging listeners to donate have improved over the years, a relatively small percentage of those who listen, donate. The obvious answer then, is to increase the pool of listeners which in turn will increase donations proportionately. And therein lies the rub. At what cost do you increase your listenership? While there are well worn techniques that will indeed increase listenership, a sort of "fallout" from such measures may result.

KRCL's determined policy to present the unique, the unrepresented, and the culturally valuable, often flies in the face of tried and true audience-building techniques. The fact remains however, that KRCL would also like to increase its audience size, for financial and other reasons. One of KRCL's stated program goals is to, "Make a positive difference in the lives of people along the Wasatch Front"—An ambitious goal that we take seriously. We certainly cannot impact the lives of

*... while large audiences mean more listener support, we feel we must remain distinct as much as possible from formats on the commercial dial.*



those who never tune us in or who have listened and are not interested or excited by what they hear. For those familiar with KRCL's program schedule, the dilemma should be obvious: Conflicting goals abound in both the station's mission statement and program policy.

On one hand we want to program predictably so that listeners won't be confused about where to find us on the dial. We want programs to "flow" from one into the other, and we want our on-air announcers to sound competent and confident behind the mike. On the other hand, we want our schedule to reflect cultural diversity

and to present a multiplicity of musical styles, most of which are not duplicated on commercial radio. We want our announcers to sound spontaneous, "real," different from commercial radio. And while large audiences mean more listener support, we feel we must remain distinct as much as possible from formats found on the commercial dial.

We also want to rely as much as possible on locally produced programs, including news and public affairs production. News departments are radio and television's most expensive area of operation; KRCL has no real news budget, period.

*(continued on page 2)*

Those in media must also have the ability to react to changes in the market place. When KRCL signed on the air in December of 1979, there was no new music until our programmers introduced it on their programs. There were no classic, sixties-rock stations, there was no reggae. It makes one wonder when the first women's music formatted station will debut in the Salt Lake market.

While this is beginning to sound like a sour grapes recitation of how the Salt Lake radio market is in some ways coming of age and how that harms KRCL, it is not meant to be. We, and when I say we, I mean all station volunteers past and present, take great pride in the fact that program formats initiated here have prompted, or at least preceded, the development of entirely new radio stations. Musically speaking, the addition of these stations has been a positive addition to the radio fare along the Wasatch Front. No, I'm not bemoaning the fact that KRCL is precluded from picking a singular popular format and doing that one thing better than anyone else. That wouldn't really interest most of the folks who participate in KRCL. What I hope I have outlined here, is our desire to increase our listenership, and a few of the impediments to that goal. Just as it is obvious that internal organization conflicts exist that preclude our challenging Utah's top ten radio stations, it is also obvious to us that we must do a better job even within the context of our stated station policies. I quote from the NPR Audience Building Task Force Paper: "Stations which fail to reach their audience's potential (and this includes most of the system to some degree) have failed to meet audience needs. It

*We know we have no chance to impact people in an entertainment or more serious sense... if there are no ears listening to our signal.*

*is possible that they have succumbed to the temptation to meet station or licensee needs rather than audience needs, which is either elitism, carelessness, or lack of expertise."*

One can read those words and react defensively, as I first did when I read them, or you can read them in a more neutral context, and ask yourself, if KRCL is not attracting a larger listenership, why? There is after all, an ultimate bottom line to all this, reminiscent of the zen conundrum of a tree falling in the forest with no one around to hear it. We know that we have no chance to impact people in an entertainment or more serious sense, with public affairs programs and service organization announcements, if there are no ears listening to our signal. Elitism, carelessness, or lack of expertise—it's tough to cop to any of those charges, but all have applied to KRCL at some point in my view. Many times I have been asked if I felt that KRCL was, "preaching to those already converted." I think many of us from time to time have hidden behind the stridency of some of our "messages," as being appealing only to those

worthy of the information. If they didn't like it, they weren't ready for the truth, so to speak. This is not a strategy one should employ to win the hearts and minds of listeners.

As to carelessness and lack of expertise, in a way they go hand in hand. I suppose we could say that an all-volunteer force has its limitations, but in reality the strengths far exceed the shortcomings. No, I think there is work to be done in this area as well, and most of the work must come from station management and staff.

KRCL has made such giant strides since those unpredictable days perched atop the Blue Mouse Theater. Many of us were kind of expecting to be attacked by someone or something. KRCL was so heavy that surely Salt Lake couldn't handle it. But a curious thing happened. We were not attacked. Those that didn't care for us, still don't. And many thousands care a great deal

and demonstrate that support every time we ask for community support. The thing that has changed for me is that I now believe that many of those who have yet to embrace KRCL have valid reasons for their attitude toward us.

You may be asking yourself what is the purpose of this article? Let me explain. Part of my purpose is to prepare our listeners and programmers for some changes that will take place in September. While these initial changes are relatively minor, to those whose programs are affected, it seems awfully final. There will be more changes in the near future, changes that haven't yet been decided upon. Part of my purpose is to once again ask for listener feedback, not so much to "protect" your favorite show, but rather your thoughts on programming generally.

Simply put, we want to do a better job of entertaining and informing you who listen to KRCL. If we proceed properly I think we can attract many, many more listeners without losing any unless, of course, there are those who listen to one program only and that program is eliminated. We do care what you think, and if positive criticism can come anywhere close to the purely positive feedback we regularly receive, we will be greatly benefitted. So keep your dial at 91 FM and send us your thoughts on how we might better serve you and all those we might reach in the future.

## Behind the Sounds

### Board of Trustees

Chair  
Howard Lundgren

Vice-Chair  
Larry Ficks

Secretary/Treasurer  
Barb Guy

Board Members  
Bob Flores, Maria Garcia, Steve Holbrook, Genaro Padilla, Jerry Schmidt, Paul Wharton, Maggie Wilde.

KRCL's Board Meetings are open to the public. Board meets on the first Thursday of even numbered months.\*

### Staff

Station Manager  
John Greene

Operations Manager  
Donna Land Maldonado

Office Manager  
Cathy Siegel

Chief Engineer  
Lewis Downey

### KRCL Volunteers

Cindy Adams, Gary Allen, Mike Anderson, Robert M. Archuleta, Natalie Atherton, George Alex, Eric Anderson, Val Austin, Deena Brazy, Bob Bedore, Dan Benaducci, Laurie Bennett, Cindy Bickoff, Jim Bilagody, Tom Blackwood, Sarah Boulette, Karen Bowers, Dave Bowyer, Chuck Bradley, Jon Bray, Mark Cantor, Dale Carlson, Scott Carrier, Brad Collins, Steve Connor, Babs De Lay, John Dean, Percy Devine, Marvin Dixon, Deon Duncan, Jim Elder, Myron Fairbanks, Pat Fenderson, Victor Fernandez, Larry Ficks, Oscar Figueroa, Bob Flinger, Matt Flinger, Rex Flinger, Doc Floor, Mack Gift, Nick Gioello, Chris Gittins, Juan Gonzales, Barb Guy, John Hailiku, Jimmy Hamamoto, Shari

### Program Guide Staff

Editor  
Cathy Siegel

Production and Design  
Barbara Betthausen

Contributing Writers  
John Greene, Donna Land Maldonado, Cathy Siegel, Lewis Downey, Dave Iverson, Jimmy Hamamoto, Mike Anderson

Typesetting  
Alphabet Soup

Advertising Representative  
Jerry Schmidt

Art and Premium Page  
Bob Bissland

## YOUR DREAM HOUSE?

### U OF U PROFESSORS, INVESTORS

Converted mansion, now 4plex, private road, lower Harvard/Yale area, rents are \$1600 and you can live there! **\$156,500.**

### HIGH AVES DUPLEX

3 BR, 2 BA, FPL, dining and more; 1 BR apt. down; 2 decks, no yard, by Lindsay Gardens — both rents are \$800 and zoned for business! **\$79,000** and will look at contracts.

### PRESTIGIOUS VINE STREET

2400 sq. ft., 3 BR (the master BR is HUGE), 2 BA, extremely well-kept yard and home **\$74,900.**

### MARMALADE HILL

2 BR bungalow high on a hill with great view from front porch: yuppie FPL, hdwd floors, off-street parking and will go FHA **\$61,900.**

### SINGLE PERSON

Affordable first home, large master BR, great kitchen, window seat in DR, FPL, garage, and only **\$47,500!** Lower Sugarhouse area.

### CENTRAL CITY STEAL

2 BR bungalow, small yard, good solid home with FHA loan, excellent rental potential **\$39,900.**

### SUGARHOUSE TUDOR

2 BR, huge black glass FPL, hdwd floors, tons of room, and a 2 BR bsmt. apt. down that rents for \$350. Off-street parking for 4 cars, large backyard, partial sprinklers **\$65,900.**

## YOU CAN OWN A HOME!

**B.A.B.S.D.E.L.A.Y.**  
*a realtor as unique as her name!*

Now at Carli and Company 2050 South 700 East (801) 487-3500

363-KRCL  
363-1818

# FALL

# PREMIUMS

## SKETCHBOOK

*Radiothon '86*

*the Program Guide accompanies any donation over \$20.00. Students \$15.00 and Senior Citizens \$15.00.*

*T-shirts - \$3.50 Donation  
Long sleeved - \$4.00 Donation  
Joe Bennion Mug - \$2.50 Donation  
Record/Book Bag - \$2.50 Donation*



**WORLD BEAT TEE**  
We introduced it during the Hey World Reggae Festival, but it represents more than reggae alone. The World Beat Tee honors music of the world in stunning red, yellow and green on a black background. This shirt acts as a music receiver anywhere in KRCL's broad cast range. Beyond that, you are simply the envy of all you meet.

**KRCL CLASSIC TEE**



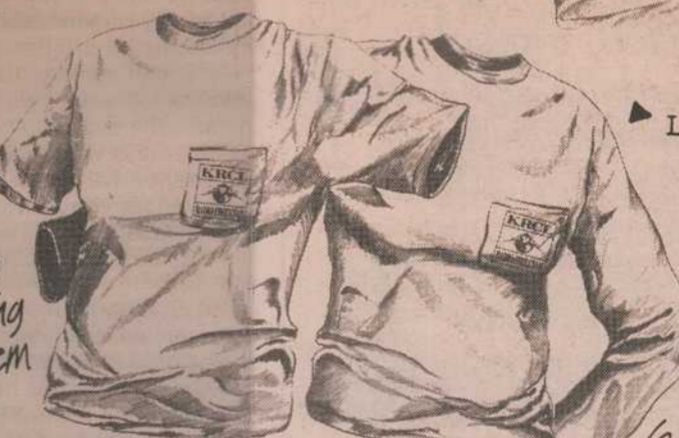
Not to be confused with the beverage, the KRCL Classic Tee graced bodies of grateful listeners from Delta, yea unto the very borders of Idaho. Perfect attire for canyon or casino, kayak or camaro. With the Classic Tee you'll be proud of your ears and body.



**LION OF ZION JAH-T**  
Get up, stand up. Put this Tee shirt on. Pack by popular demand, KRCL's one color only iconographic delight sports the Ethiopian tri-color flag. A *Smile Jamaica* special in blazing gold complete with Zion, lion and state-  
triotic beehive. Jah-love.

**NIFTY POCKET TEE**

Our listeners have been clamouring for this new addition to the KRCL clothes line. From Pinecrest to Panguitch they've been waiting for the Tee that will give them that strangely authentic James Dean look. Dale Carlson recommends extra tight size (shrink to fit!)



**LONG SLEEVED POCKET TEE**

The only missing link in our tee collection is now filled, with the Fall addition of the Long sleeved Pocket Tee, silver gray with blue-lettered logo. Will we expose only a well-turned wrist? Or a bare arm up to the elbow? The fashion implications are enormous. True Fall chic.

**KRCL RECORD BAG**

Our all natural post-yp style Record Bag, featuring of course, the logo of Your Only Sound Alternative in vivid blue print. Space enough for sundry items necessary for the good conduct of a listener's life.



**THE JOE BENNION MUG**

This rugged coffee mug is hand-thrown especially for KRCL by Joe Bennion of Horseshoe Mt. Pattery. For 6 years now Joe has made our KRCL mug down in Spring City. If you're down that way, stop in. He'll be tuned in.

**SMOKEY'S RECORDS**

1515 S. 15th East  
Salt Lake City, Utah  
84105

(801) 486-8709



**In The Mood**  
HAIR DESIGN AND COLOR

850 EAST 900 SOUTH  
SALT LAKE CITY  
363-3071



dedicated to  
the healthy enlivening of  
the Wasatch Front

**Discover** the richness  
and diversity that is growing  
in our own backyard. Read  
*Catalyst* Quarterly.

the arts — business — children — education — ecology — food and nutrition — goods for growth — health, healing & bodywork — movement — psychic arts — psychology, therapy/counseling — spiritual practices — time out and travel — women

Free at newsstands.  
Or subscribe!

Spring edition distributed March 7th

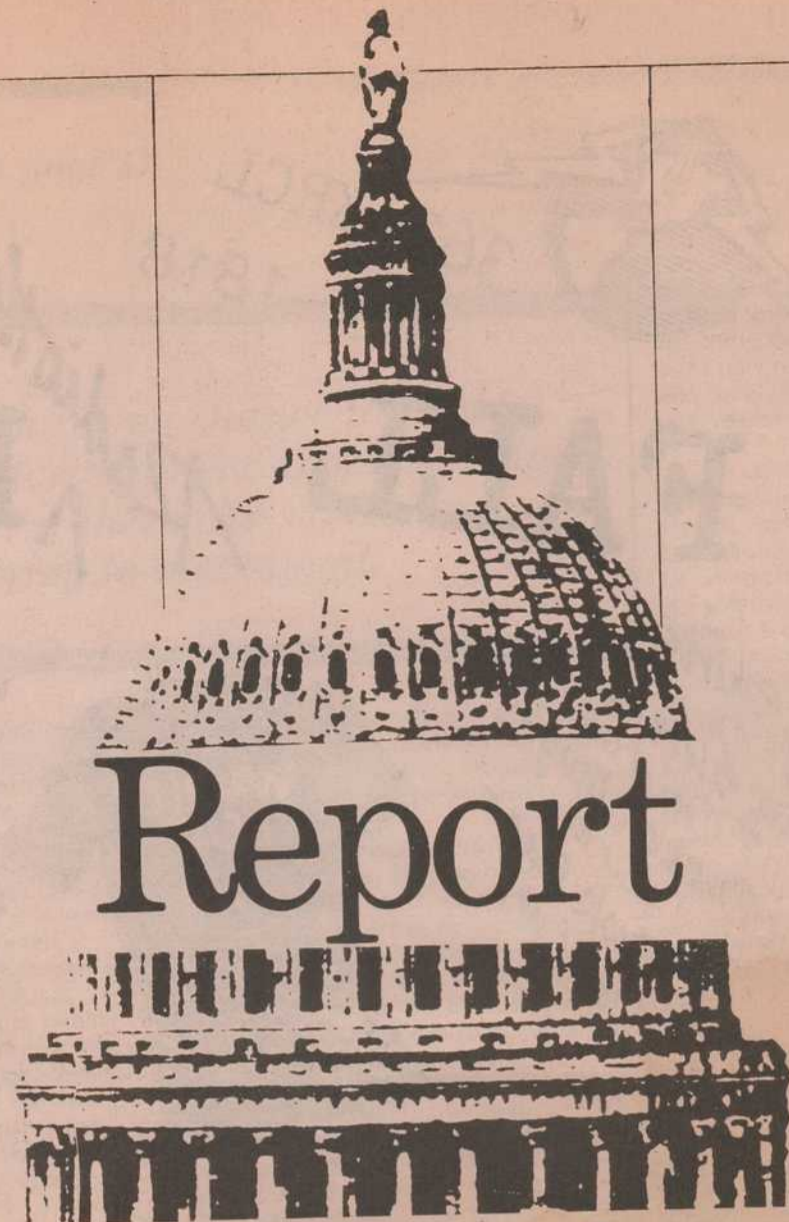
I enclose \$5 for one year of  
*Catalyst* Quarterly.

Name .....

Address .....

Send to:

*Catalyst* Quarterly  
140 McClelland St.  
Salt Lake City, UT 84102



# Report

## from the NFCB Conference

*Between July 20 and 24 the National Federation of Community Broadcasters (NFCB) annual conference was held in Bellingham, Washington. Two KRCL staff and a number of volunteers attended. Below are some thoughts on the conference, on community radio, and how it affects KRCL—Listeners' Community Radio of Utah.*

**Donna Maldonado—Operations Manager**

Obviously, all of us who attended have different perceptions and (hopefully) we all brought back something that will/can be shared with the other volunteers, staff and audience—in the way of better sound or perhaps more creative programming.

As a staff person, the contacts and information was invaluable. As a radio person, the opportunity to talk radio for four days was an invigorating experience. No matter how many conferences one attends (I've been lucky enough to attend four) there's always, always something new to learn. There are always new people to meet and there's always a feeling of rejuvenation and hope.

The growth of community radio over the last 20 years has been stupendous; one might think since KRCL is only seven years old, we would still be considered rather young... not exactly true. As a matter of fact, I sat on two panels for two different sessions and Jimmy was on another panel—so people were listening to us for possible direction and ideas—kinda scary since I came back with a lot of notes

from other sessions! Another panel member said he felt like he should be in the audience (Terry Selby from KOTO, Telluride, CO, which has been on the air for 10 years). And that's exactly how I felt. Not that we didn't know what we were doing—rather, that radio is constantly changing: FCC rules and regs, political issues, music, trends and the people. One thing that stays constant is our mission statement that will always act as our guide—the reason KRCL exists: to provide air time to those people, communities or lifestyles that commercial media does not. Maintaining the "alternatives" will always be a challenge—but, I prefer to pick my cherries from the tree, anyway.

**Lewis Downey—Chief Engineer**

The 1986 NFCB conference was my first exposure to the community of non-profit broadcasters outside of Utah. I came away with an appreciation for the different types of people involved in community broadcasting, an idea of how many different types of station formats are considered "alternative" and as many ways of getting the job done, depending on what part of the country and urban/rural setting the radio station is in.

As KRCL's engineer, I found that many workshops were essential, and found them all informative and eye-opening. Sessions on engineering/legal aspects of FCC rules, translators, tape preservation, computer networking, satellite earth terminals, marketing subcarriers, audio recording... were all too short, and raised good questions. They all represent a commitment on the part of the community broadcasters in the U.S. to improve the technical quality, variety of content and reliability of their community's radio station.

I met people involved in all steps of community radio involvement. Some were fighting the initial funding/licensing battle with a hope of being on the air within two or three years. Others were old-timers (even gurus) of public radio's formative years—the mid-1960s.

An unexpected treat was exposure to people involved in, and/or knowledgeable about, non-commercial broadcasting in Quebec, England, and, yes, Nicaragua. This brought home just how lucky we are to have a cultural/legal framework which supports the existence of stations like KRCL, and also how essential community radio is in providing an outlet for community concerns and points of view that could never be aired by the commercial media.

**Dave Iverson—Host, "Altered States"**

Attending an NFCB conference has a recharging effect, not unlike replacing batteries in a tape player.

Hearing first-hand the quality of work being produced around the United States in public radio makes me want to help KRCL sound even better.

While at the conference I was able to attend a wide variety of workshops, each focusing on a different area of community radio. To gain new knowledge in production I went to an advanced production class and two different news workshops. One news class dealt with magazine shows and formats, while the other discussed using volunteers in the news department. A listening with critiques and hints on improving overall sound also proved to be valuable.

On the lighter side were sessions about humor on radio, personality radio and a hot spot showcase, which highlighted the best promo in the country.

While the workshops contained much useful information, some of the most informative sessions happened outside the classroom. Having the chance to meet and talk with other people who are equally committed to public radio was exciting. And spending a week learning how others meet and conquer day-to-day challenges was inspiring.

In addition to the knowledge, was the opportunity to establish new friendships with people from every type of background. Since I've been back in SLC, I have already received correspondence from people I met at the conference, including a special on Suzanne Vega which will air on KRCL.

This kind of cooperation is what makes community radio unique, and events such as the NFCB conference remind me what a powerful medium public radio really is.

**Mike Anderson—Host, "Jazz Quart"**

On attendance of this and past NFCB conferences I always return with a great reinforcement and pride in community radio. Most media are after a mass audience, and the voices of minorities and the wide array of culture that make up a community are often forgotten. The need for diversity

and awareness of issues, was discussed at the NFCB conference, with an understanding of the importance of broadcasting social issues and exposing and serving many cultures. There is not one uniform method for a station to achieve this goal since each station serves a different community. In addition to the workshops, meeting and talking with volunteers and staff of other stations is exciting. I find learning about the many facets of radio, and exchanging ideas on programming to be one of the strong points of the conference.

After the NFCB conference, I went to the AMARC 2 conference in Vancouver, B.C., which was a conference for community radio stations worldwide. Over 40 countries were represented. Workshop themes dealt with radio and its relation to political and social movements, the need for peace, and alternative media's role in achieving peace by looking to innovative programming, and programming involving the community. Much attention was also focused on minority and women's issues, and programming for those issues.

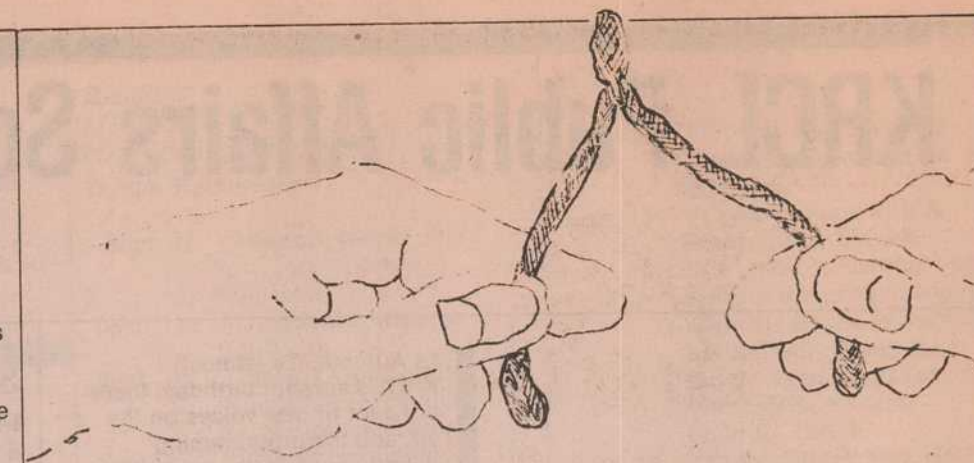
Americans are lucky to have community radio. Many countries do not have this service. For instance, there is currently a battle with the government in Great Britain to permit community radio. Both the NFCB and the AMARC 2 conferences show me the importance of KRCL's service to the community. We provide alternative information and music that commercial broadcasters ignore. I have returned to KRCL refreshed, with new ideas to aid me in my programming and other activities of the station.

**Jimmy Hamamoto—Music Director**

This was my second conference attendance. This year, not only did I attend the conference to learn more about community radio, I was also in a position to share my expertise about radio record service.

The workshops I attended this time could be loosely described as listening sessions. These sessions were ideal for independent producers as well as on-air programmers. Central to these sessions was listening to various broadcast station examples such as documentaries, public announcements, and station promotions. Technical advices and secrets were freely given and greatly appreciated.

I co-lead a session on improving the quality of the station's current record service. The contents covered were obtaining company addresses, corresponding frequently and accurately, exposure and recognition through local and national sources such as record stores and other businesses, the program guide, and listings in music trade magazines. Other sources of obtaining records were through actual donations. KRCL has received a good number of records through record outlets, other radio stations, as well as from our listeners. I also strongly recommended that they use the multiple talents of their own music programmers to come up with contacts and the actual records.



# WISH LIST

- Nice electric typewriters
- A modem for our Digital word processor
- Professional microphones
- Good quality records

If you can help KRCL out with any of these items, please call us!

**SAVE DOLLARS ON EVERY YARD! WITH CARPET AT LOW, LOW PRICES**

**We have our own professional installers**

**HUNDREDS OF ROLLS ON DISPLAY**

- DISCONTINUED PATTERNS
- SLIGHT IRREGULARS
- REMNANTS
- EXPERIMENTAL STYLES
- VINYL FLOORING
- OUTDOOR CARPET
- FIRST QUALITY CARPET
- POOR MANS ORIENTAL RUGS

**COMPLETE SUPPLIES FOR THE DO-IT-YOURSELF EXPERT ADVICE**

HOURS MONDAY THRU FRIDAY 10 AM TO 7 PM  
SATURDAY 10 AM TO 6 PM CLOSED SUNDAYS

**973-7046**

3725 SOUTH REDWOOD ROAD

**HARVEY'S**  
Piano Music & Prime Rib

**Coyote Bill's**

**Intermountain**  
Guitars & Banjos

guitars mandolins fiddles books, kits

banjos hand-made instruments accessories

Master Craftsmen  
712 EAST FIRST SOUTH, SALT LAKE CITY, UT 84102  
(801) 322-4682  
10 AM-6 PM, MONDAY thru SATURDAY

Rentals Lessons

**PERFORMANCE AUDIO**

2358 So. Main Salt Lake City, Utah 84115  
801-355-8690

**D.B. Cooper's**

**Cabin Fever**

from ridiculous to sublime  
greeting cards & diversions  
that break the monotony!

66 WEST FOURTH SOUTH

# KRCL Public Affairs Schedule

by Donna Land Maldonado

It's Autumn, it's (almost) KRCL's seventh birthday, there are a lot of new voices on the air, and the programming department has its very own budget! Thanks to CPB there is an allotted amount of money that is earmarked for programming only. You may be aware that up in the blue (hazy blue?) sky are hundreds of radio programs bouncing around the satellites waiting to be heard. We don't have our 'earth station' yet, but the allocated money will allow the purchase of programs we think would be of interest to you. Exciting? Absolutely!! So, if you know of any dynamic programs... let us know about them. Speaking of changes, there are a few within the public affairs program format. Please see the center fold-out for all the changes. In some cases there were daytime changes, in some, it meant airing at a later time and for some it meant the conclusion of that program. I'm sure you're aware, with the constant growth of KRCL, there will always be change... and let me remind you, we are always open to suggestions, opinions and/or disagreement. Please address your comments to: KRCL, 208 West 800 South, Salt Lake City, UT 84101.

As usual, there are some stimulating programs scheduled during the Thursday MORNING LIGHT and Thursday P.A. 91 time slots. See separate ads for descriptions, dates and times. October (month before elections) will have some interviews with candidates as well as information on issues of importance. Listen for these "spot reports" during DRIVE TIME MAGAZINE, Thursday LUNCH ENCOUNTER and the weekly NEWS MAGAZINE. During October there will also be some focus on special days: Columbus Day (the non-holiday), Peace Day the 24th, Statue of Liberty's B-day on the 28th and the 31st—San Hain. For Lady Liberty's hundredth anniversary it seems appropriate to air "On Equality," short modules on the topics of the environment, affirmative action, the elderly, education, the city, handicapped children, the state of equality and a definition of equality. The short features will air during DRIVE TIME MAGAZINE around 5 p.m. Back to San Hain, doesn't sound familiar?? Well, about 2000 AD, November 1 was the beginning of the new year celebrated with bon fires and costumes of animal heads and skins to welcome the season of death. Over time the Romans added to the rituals and approximately 800 AD the holiday was Christianized and renamed All Saints Day to commemorate the dead. The begging came into play in England by the poor, who were allowed to beg on the holiday in exchange for saying prayers for the deceased. Today the costumes and begging continue on what is now Halloween. On Thursday LUNCH ENCOUNTER, the 30th, we'll start preparing you with some ghost stories by William Butler Yeats. KRCL's trick or treat will be at the beginning of the month.

To borrow a phrase from a fellow community station (KB00 in Portland, OR): "Ear it all" here on the only alternative.

## SUNDAY

### First Person Radio 8 a.m.

News, information and perspectives of Native Americans as seen by the Native American.

### New Dimensions 9 p.m.

Sept. 4: "Being A Whole Person" with Frances Vaughn, psychotherapist and author.  
Sept. 7: "Information, Intelligence and The Computer Myth" with Theodore Roszak, author, who makes a strong case against the use of computers.  
Sept. 14: "Voice Dancer" with Jill Purce, author, who shares her vision of sound as a tool for transformation.  
Sept. 21: "Doing What You Believe" with Phillip Berman, author, describes the process of compiling real-life essays of prominent personalities.  
Sept. 28: "Toward a Global Economy" with John Oliver Wilson, chief economist of the Bank of America, with a unique view of the world economy.  
Oct. 5: "Seeing Clearly: Images For Health" with Jeanne Achterberg, associate professor and director of research in Rehab Science at the U of Texas in Dallas, scientifically validates the value of imaging for healing purposes.  
Oct. 12: "From Crisis To Transformation" with Richard Moss, M.D., proponent of self-healing.  
Oct. 19: "Making Magic In The World" with Maya Angelou, poet story teller and Reynolds Professor of American Studies at Wake Forest University.  
Oct. 26: "Eco-Mind: Reverence For Life" with Henryk Skolimowski, professor of philosophy, inspires the listener to think in new ways about living on Planet Earth.

Sept. 14: "Voice Dancer" with Jill Purce, author, who shares her vision of sound as a tool for transformation.  
Sept. 21: "Doing What You Believe" with Phillip Berman, author, describes the process of compiling real-life essays of prominent personalities.  
Sept. 28: "Toward a Global Economy" with John Oliver Wilson, chief economist of the Bank of America, with a unique view of the world economy.  
Oct. 5: "Seeing Clearly: Images For Health" with Jeanne Achterberg, associate professor and director of research in Rehab Science at the U of Texas in Dallas, scientifically validates the value of imaging for healing purposes.  
Oct. 12: "From Crisis To Transformation" with Richard Moss, M.D., proponent of self-healing.  
Oct. 19: "Making Magic In The World" with Maya Angelou, poet story teller and Reynolds Professor of American Studies at Wake Forest University.  
Oct. 26: "Eco-Mind: Reverence For Life" with Henryk Skolimowski, professor of philosophy, inspires the listener to think in new ways about living on Planet Earth.

### Music from "The Hearts of Space" 10 p.m.

This show combines the best of the new electronic and electro-acoustic Spacemusic. It is brought together into lyrical, evocative journeys with minimal commentary. An Ann Turner, Stephan Hill Production.

## MONDAY

### Morning Light 8:30 a.m.

"Consider The Alternatives," a SANE production on alternative notions of today's global concerns.

Reading  
11:30 a.m.  
(See Reading Schedule)

## Our Arts 12 noon

Interviews with local or visiting artists produced by hosts: Desiree Mays, Carlie Jimenez or Marilyn Scharine.

Sept. 1: Desiree talks with Helen Cox from the State Library System about the library's program—"Let's Talk About It."  
Sept. 8: Tom and Jeanne Parker talk with Marilyn about the new city Repertoire Theatre.  
Sept. 22: Jimmy and Beth Miklavcic talk about their new performing group "Another Language" with Marilyn.  
Sept. 29: Desiree talks with Jim Svendsen about the Greek Festival's production of *Iphigenia*.  
Oct. 6: Daniel Lipton, conductor, discusses the opera "Turandot" with Desiree.  
Oct. 13: Joel Hancock from the University of Utah Dept. of Latin American Literature discusses the novel by Juan Rulfo, *Pedro Paramo*, which is being presented on READING.  
Oct. 20: Desiree talks with Patty Lockhard about Patty's alter ego—Rosalind Russett.  
Oct. 27: To be announced

### Concerning Gays and Lesbians 12:30 p.m.

A program to help educate the public on a different lifestyle. Hosts: Mickey & Eric.  
P.A. 91  
7:00 p.m.  
"Conversations from Wingspread," a free exchange of ideas. Produced by the Johnson Foundation.

## TUESDAY

### Morning Light 8:30 a.m.

"First Person Radio—Native American weekly news.

Reading  
11:30 a.m.  
(See Reading Schedule)

### Handicapped 12 noon

Host Linda Reeder talks with the disabled or with people who work with the "handicapped."

### Enfoque Nacional 1 p.m.

A Spanish national news program en Espanol. A Western Community Bilingual Radio and Radio Bilingual production.

7 p.m.  
"Music in the New World," a series of sound portraits of ethnic America recorded on location.

Sept. 2: Mexican: Mariachi music in East Lost Angeles  
Sept. 9: Afro-Cuban: Cuban rumba and Afro-Cuban "lucumi" cult music in Washington, D.C.  
Sept. 16: Soviet: Uzeki music of

Soviet Central Asia in New York City.  
Sept. 23: Loa: Lao folk and court music in Des Moines, IA.  
Sept. 30: Turkish: Classical in NYC; bellydancing and folk in Washington, D.C.  
Oct. 7: South Slavs: music from Bosnia, Macedonia and Serbia in Illinois.  
Oct. 14: Okinawan: an Okinawan folk song bar, classical music lesson and radio broadcast in Honolulu.  
Oct. 21: Greek: funky dance rhythms from Epirus in New York City.  
Oct. 28: Vietnamese: traditional Vietnamese opera in California.

"China: Notes on the Revolution-in-Progress,"  
Oct. 1: "Thinking Out Loud—"The Land, the One and Many: Literature Looks at Utah."  
All other programs will be rebroadcast of "Consider the Alternatives."

## THURSDAY

### Morning Light 8:30 a.m.

Sept. 4: A Labor Day Special. "Black Mesa Sacrifice": Who wants this area and why are the Navajo and Hopi people the ones that must make the sacrifice? Pacifica distribution.  
Sept. 11: "Interview with Steven Biko": Seven days before Biko's arrest and death he gave this interview of his vision of the future of South Africa. Pacifica distribution.  
Sept. 25: "Who Are the Contras?" Perspectives from supporters as well as non-supporters.

Sept. 3: "The Roots of World Hunger"  
Sept. 10: "A Stars War Debate"  
Sept. 17: "Nuclear-Free New Zealand"  
Sept. 24: "Alternative Futures"  
Oct. 1: "The Gorbachev Era" part I  
Oct. 8: "The Gorbachev Era" part II

### Reading 11:30 a.m.

(See Reading Schedule)  
Fairmenist Revolution  
12 noon  
ness toward humanism, the letting go of stifling habits and attitudes.  
P.A. 91  
7 p.m.  
Sept. 3: "Thinking Out Loud—

Oct. 2: "Out of the Klan" C.P. Ellis talks about his reasons for being a member of the Ku Klux Klan and why he decided to leave it. Pacifica distribution.  
Oct. 9: "Voices of the Civil Rights Movement" A series related through oral history and song. Part I: "Profiles of Movement Activists I."  
Oct. 16: "Profiles of Movement Activists II."  
Oct. 23: "Reverend Fred Sherrod."  
Oct. 20: "Reverend Charles Sherrod."

Reading  
11:30 a.m.  
(See Reading Schedule)

### Lunch Encounter 12 noon

Sept. 4: "Museum Notes" with host Terry Tempest Williams.  
Sept. 11: "Utah Issues with guest Bill Walsh."  
Sept. 18: Thinking Out Loud—"China: Notes on the Revolution-in-Progress."  
Sept. 25: "Energy Development: The Lakota Nation and The Black Hills." One hour special.  
Oct. 2: "Museum Notes" with host Terry Tempest Williams.  
Oct. 9: "Utah Issues with guest Bill Walsh."  
Oct. 16: Thinking Out Loud—"The Land, The One and Many: Literature Looks at Utah."  
Oct. 23: Peace Day Special.  
Aug 28: Halloween Special: "So Passionate is a Shade: Three Ghost Plays" by William Butler Yeats.

### Lunch Encounter 12:30 p.m.

Sept. 4: To be announced  
Sept. 11: "It's The Law" with host Tineke Van Dyke.  
Sept. 18: "Senior Issues"  
Sept. 25: "Energy Development" continues  
Oct. 2: "The Politics of the Original Sin."  
Oct. 9: "It's the Law" with host Tineke Van Dyke.  
Oct. 16: "Senior Issues"  
Oct. 23: Peace Day Special continues.  
Oct. 30: Halloween special

New Dimensions  
1 p.m.  
(See Sunday Schedule)

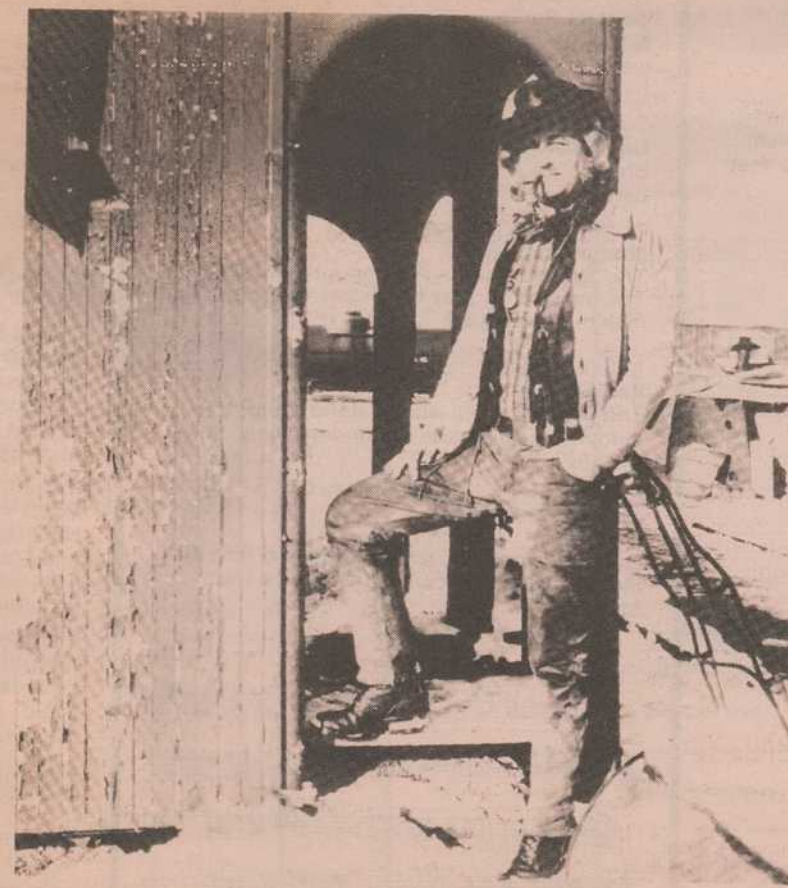
## P.A. 91 7 p.m.

Sept. 4: "Worker Cooperatives—"An Alternative in Free Enterprise."  
Sept. 11: "Conversations with A Peacewalker: Simone Wilkenon." The three part series is a moving account of how a British housewife has radically changed her life to organize against Great Britain's arms buildup. Part I.  
Sept. 18: "Peacewalker" Part II.  
Sept. 25: "Peacewalker" Part III.  
Oct. 2: "War Stories: A Vietnam Retrospective." A four part series that explores the effects of the conflict. Part I: "Raw Edge of Perception" lessons learned. NFCEB distribution.  
Oct. 9: "The Conflict of Cultures" part II.  
Oct. 16: "The War at Home: A Media Event" part IV.  
Oct. 23: "Vietnam Revisited and Revised" part IV.  
Oct. 30: "Counterforce: The Nuclear War Fighting Strategy."

## FRIDAY

Morning Light  
8:30 a.m.  
In Black American," views and insights of today's society through the eyes of black America.

12 noon  
KRCL's Weekly News Magazine.  
La Voz De La Gente  
12:30 p.m.  
Host Robert Michael Archuleta with different guests about issues concerns, activities and interests of the Hispanic community.



U. Utah Phillips will be the special guest during September and October.

U. Utah Phillips, The Golden Voice of the Great Southwest, has enjoyed a variety of careers, including horse wrangler, union organizer, employee on a Navajo Indian Reservation, historian, and railroad bum. In 1982, he was named Grand Duke of Hoboes by Steam Train Maury, King of the Hoboes. Regarding his music, Utah says it best himself:

"I don't really have a great voice. I can make it loud or soft, depending. Mostly I guess my voice sounds like the places I've been and the people I've stayed with. I sing songs about trains, coal mines, unions, factories, working people, lazy people, the old and new West, bums, politicians, and the different things that happen to you when you're in love. And I tell stories and try to get people laughing and singing together. You know, most of the songs I sing really belong to those people—they just don't know it yet. That's what I do."

**"SING OUT" is featured during LE CAFE FOLK at 10:30 a.m. on Mondays**

**Sunday**



6 to 7 a.m.  
**Scooba Dooba**  
(continues from Saturday)  
Hamamoto presents an assortment of oddities and niceties during the wee hours.

7 to 10 a.m.  
**Living the Circle of Life**  
Jim Bilagody with Native American music, news and information. (Donna Land hosts the first Sunday of each month.)

10 a.m. to 2 p.m.  
**Sagebrush Serenade**  
Music to ease you from your morning cup through your Sunday afternoon. Manageable folk & rock with a country flavor with Rick Summers. Natalie Atherton sits in once a month.

2 to 5 p.m.  
**Bluegrass Express**  
Join the Finners—Papa Bob and sons Matt and Rex—for the best in bluegrass; music that is at the root of a lot of the country and folk tunes popular today.

5 to 6 p.m.  
**Greek Hour**  
John Shilaos and Mike Katsan host.

6 to 7 p.m.  
**Voice of Polynesia**  
Music and information from the Pacific islands.

7 to 9 p.m.  
**Nexus**  
New Age Music with John Schellinger.



9 to 10 p.m.  
**New Dimensions**

10 to 11 p.m.  
**Hearts of Space**  
The best of the new electronic and electro-acoustic space music.

11 p.m. to 1 a.m.  
**Tentacles**  
Unique music from the avant garde, including jazz, new wave, rock and electronic, with host Kurt Setzer.

1 to 3 a.m.  
**Emotional Traffic**  
With host Sue Tidwell.

3 to 6 a.m.  
**Broken Mirrors**  
Your host Click Dark pumps literary intrigue into the bloodstream of high energy Rock 'n Roll to create a method to his madness.

**Monday**

6 to 8:30 a.m.  
**Breakfast Jam**  
A mix of country, folk, rock and a sprinkling of blues—goes down well with coffee and toast. Host: Lisa Mace.

8:30 to 9 a.m.  
**Morning Light**  
"Consider the Alternatives"—global concerns.

9 to 11:30 a.m.  
**Le Cafe Folk**  
Contemporary folk music with a touch of tradition hosted by Donna.

11:30 a.m. to 12 noon  
**Reading**  
With host Carlie Jimenez.

12 noon to 12:30 p.m.  
**Our Arts**  
With Marilyn Scharine, Carlie Jimenez or Desiree Mays.

12:30 to 1 p.m.  
**Concerning Gays & Lesbians**  
With Mickey & Eric.

1 to 2 p.m.  
**Reggae Beat**  
Hosts Roger Steffens and Hank Holmes present the best in new releases, yet to be released studio recordings, information and interviews with reggae artists.

2 to 4 p.m.  
**Radio Libre**  
Popular music from the French-speaking world, plus news of the French community (with English subtitles) hosted by John Van Den Bergh and Mark Palmer.

4 to 6:30 p.m.  
**Drive Time Magazine**  
Lynne Van Dam and John Greene alternate as hosts, each with an eclectic blend of rock, sweet sounds and important information. Note the segues.

6:30 to 7 p.m.  
**Pacifica News**

7 to 7:30 p.m.  
**Conversations from Wingspread.**

7:30 to 9:30 p.m.  
**Great Basin Blues**  
The best in blues, N.Y. to L.A., Texas to Chicago. Blow away them good old Monday Blues with host Brian Kelm.

9:30 to 11:30 p.m.  
**Red, White and Blues**  
Explore the wide variety of this distinctively American musical form, including a smattering of her offspring: jazz, rockabilly, soul, rock-n-roll, J.R. Rokich is your host.

11:30 p.m. to 1:30 a.m.  
**Winds of the Old Days**  
Folksy, bluesy rock.... Get out your incense and candles. Hosted by Sarah.

1:30 to 3:30 a.m.  
**Chronic Chaos**  
Rock, jazz, blues, new wave or even comedy, host Brian Jaramillo takes you on a musical merry-go-round guaranteed to keep your feet stompin' and your sides splittin'.

3:30 to 6 a.m.  
**Permanent Waves**  
Sound is electricity. Voices are voltage. Personalities are wavelengths. Music is lifeblood. Join Lance McCune and Brian McDonald on this journey of classic rock and roll.



**KRCL**



**Q1FM**

Salt Lake City, Utah

**Tuesday**

6 to 8:30 a.m.  
**Breakfast Jam**  
Mr. Baggins plays early morning rock to start your day with a smile.

8:30 to 9 a.m.  
**Morning Light**  
"First Person Radio"—Native American weekly news.

9 to 11:30 a.m.  
**Women or Nothing**  
Julie Leuders and Lisa Lucero alternate weeks with a show dedicated to female vocalists, Women's Music, and other music by women. Women's News and information too!

11:30 a.m. to 12 noon  
**Reading**  
With host Carlie Jimenez.

12 noon to 12:30 p.m.  
**Fairmenist Revolution**  
With Mack Gift.

12:30 to 2 p.m.  
**Sojourns**  
International contemporary and traditional music. Host: Lewis Downey.

2 to 4 p.m.  
**Solo Flight**  
Host Nick Gioello emphasizes the art of guitar music solo and lead, acoustic and electric.

4 to 6:30 p.m.  
**Drive Time Magazine**  
Dan Maryon picks up your drive with rhythm—reggae and ska plus—as he informs you of local happenings.

6:30 to 7 p.m.  
**Pacifica News**

7 to 7:30 p.m.  
**Radio Arts**

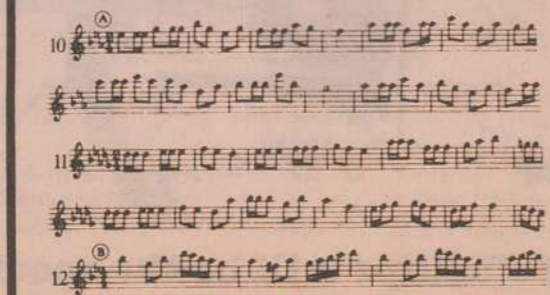
7:30 to 9:30 p.m.  
**Generic Radio**  
Not really. The playlist reads: reggae, new wave, rockabilly and new music. Programmed by Barb Guy.

9:30 to 11:30 p.m.  
**Bad Music for Bad People**  
Shauna plays the best of new music with a twist.

11:30 p.m. to 1:30 a.m.  
**Mission Impossible**  
The agents: George Alex and Bob Bedore. The mission: to play two hours of progressive music. Impossible?

1:30 to 3:30 a.m.  
**RadioActive**  
Erin Fraser covers what's at the top of the modern music charts in London, Paris, and Sydney.

3:30 to 6 a.m.  
**Caravan**  
Good old rock and roll to move you into the morning. Join the caravan with host Rick Stayner.



**Wednesday**

6 to 8:30 a.m.  
**Breakfast Jam**  
Jim Shelton or Butch Shumway will make waking a pleasure with a blend of jazz and folk music designed for the morning.

8:30 to 9 a.m.  
**Morning Light**  
"Common Ground"—international news.

9 to 11:30 a.m.  
**Jazz Quart**  
Mike Anderson helps you appreciate jazz. Nothing to indicate it's midweek or midmorning—just good jazz.

11:30 to 12 noon  
**Reading**  
With host Carlie Jimenez.

12 noon to 12:30 p.m.  
**Fairmenist Revolution**  
With Mack Gift.

12:30 to 2 p.m.  
**Sojourns**  
International contemporary and traditional music. Host: Lewis Downey.

2 to 4 p.m.  
**Solo Flight**  
Host Nick Gioello emphasizes the art of guitar music solo and lead, acoustic and electric.



4 to 6:30 p.m.  
**Drive Time Magazine**  
Babs DeLay focuses all her energy into a tight mix, with dance music, Weekend Entertainment and issues.

6:30 to 7 p.m.  
**Pacifica News**

7 to 7:30 p.m.  
**Consider The Alternatives**  
Global concerns

7:30 to 9:30 p.m.  
**Aural Decay**  
Old rock and new rock, accentuated with rockabilly, reggae and whatever is handy. Hosted by Dave Santivasi. It may be habit-forming.

9:30 to 11:30 p.m.  
**Night Vinyl!**  
Host Dave Jacobs combines a blend of 60s and 70s rock and folk classics rounded out with the latest additions to bring you a tasty way to end a Wednesday.

11:30 p.m. to 1:30 a.m.  
**Altered States**  
Dave Iverson serves as tour guide for exploring acoustic, electric and keyboard oriented rock plus other oddities just for fun.

1:30 to 3:30 a.m.  
**Eternity Spin**  
A rock 'n' roll journey into the mystic, featuring a unique mix of styles bound together with the spirit of magic and adventure. Hosted by Gary Allen.

3:30 to 6 a.m.  
**Nite Roots**  
Top rankin' eclectic reggae with host Glenn.

**Thursday**

6 to 8:30 a.m.  
**Breakfast Jam**  
Ease into the morning with blends of rock, folk, jazz and other assorted goodies with your host Jerry Schmidt.

8:30 to 9 a.m.  
**Morning Light**  
"The Third World"

9 to 11:30 a.m.  
**This Feminine Position**  
Cindy Adams or Laurie Bennett bring you music for and by women.

11:30 a.m. to 12 noon  
**Reading**  
With host Carlie Jimenez.

12 noon to 1 p.m.  
**Lunch Encounter**  
Refer to Public Affairs schedule.

1 p.m. to 2 p.m.  
**New Dimensions Radio**  
Refer to Public Affairs schedule.

2 to 4 p.m.  
**Daydreams**  
Modern Impressionism with Mark C. Jackman.

4 to 6:30 p.m.  
**Drive Time Magazine**  
Host Bruce Saffran brings you an eclectic mix of music for those who like it a bit less traditional.

6:30 to 7 p.m.  
**Pacifica News**

7 to 7:30 p.m.  
**Political Issues**

7:30 to 9:30 p.m.  
**Music Latina**  
Presented by Juan Gonzales featuring Latin music in a variety of genres from the South American traditional flutes to the American Latin pop scene.

9:30 to 11:30 p.m.  
**Fret 'n Fiddle**  
Traditional folk music from here and abroad, depending on your host: Peter Tinker, Paul Truex or Mark Cantor.

11:30 p.m. to 1:30 a.m.  
**Utah Slavia**  
Utah's eastern European heritage lives! We focus on the music of Yugoslavia, provided by Craig Kurumada and Craig Miller. Scandinavian music is featured the first Thursday of every month by Karl Gustav Wahlund and Leslie Foster.

1:30 to 3:30 a.m.  
**The Unknown**  
Join Eric Anderson for the unknown. A pleasant mixture of guitar oriented new wave and soft-core post-punk, with "modern disco" taking up the final half hour.

3:30 to 6 a.m.  
**Funtime**  
Rock 'n roll...funtime on KRCL with host John Dean.

**Friday**

6 to 8:30 a.m.  
**Breakfast Jam**  
Motown, R & B, soul, blues and jazz—music to make you move. Hosted by Maureen Mooney.

8:30 to 9 a.m.  
**Morning Light**  
"In Black America"

9 to 11:30 a.m.  
**Attitude Adjustment Session**  
Chuck Bradley does some soul adjustment to get you ready for the weekend.

11:30 a.m. to 12 noon  
**Reading**  
With host Carlie Jimenez.

12 noon to 12:30 p.m.  
**KRCL News Magazine**

12:30 to 1 p.m.  
**La Voz da La Gente**  
Host Robert Archuleta

1 to 2 p.m.  
**S.O.A.P.**  
Sounds of a party. Music that will range from mellow-soul to scratching, presented by host Sam Smith.

2 to 4 p.m.  
**Soul Fusion**  
Old and new soul and R & B with host Robert Velasquez.

4 to 6:30 p.m.  
**Drive Time Magazine**  
Friday brings you the Professor of R & B, Larry Ficks, presenting rhythm and blues, and old rock and roll, plus social issues information.

6:30 to 7 p.m.  
**Pacifica News**

7 to 9 p.m.  
**KRCL Jukebox**  
Inspector Bill Komlos brings you music from the Fifties, Sixties and Seventies to blow your mind, but not your cool!

9 to 11 p.m.  
**The G Men**  
The most arresting rock music to be found. Hosts Chris Gittins and Hugh Garner.

11 p.m. to 2 a.m.  
**Revolutions**  
Rock and roll, blues and comedy, with your host Dave Bowyer.

2 to 4 p.m.  
**Variables**  
Electronic, holistic, new age music brought to you by Thom Odom and Derek Smith.

4 to 7 a.m.  
**Gospel Connection**  
Contemporary gospel that encompasses all categories of music. Tune in to Carol and Marvin Dixon for your early morning start.

**Saturday**

7 to 10 a.m.  
**Asian Chimes**  
Music and information from the communities of Laos, the Philippines, China and Viet Nam. Presented by your hosts Chara Souratha, Vic Fernandez, Darrell Young and Hang Nguyen.

10 a.m. to 2 p.m.  
**Sagebrush Serenade**  
From the best known to the least known rock artists of the Sixties, don't miss "one of KRCL's best" with Dale Carlson.

2 to 5 p.m.  
**Smile Jamaica**  
Reggae—the roots, as well as current releases. Join Myron Fairbanks as he takes you through the music of Jah. As an added bonus, "Reggae Beat," the archives of reggae.

5 to 7 p.m.  
**American Music**  
Genre: Rockability. Intent: Pure Entertainment. Hosts: Violet Ruybal and Deon Duncan.

7 to 9 p.m.  
**Phono Synthesis**  
Host Jon Bray offers the latest in new wave, rockability, punk and dance music.

9 to 11 p.m.  
**No Guarantee**  
Noise punk, avant rock, avant punk, noise rock, avant noise, punk rock. But, no guarantee. Host Ron Ward.

11 p.m. to 3 a.m.  
**Behind the Zion Curtain**  
Synthetic, authentic punk—hard core! Brad Collins is the guilty one who cracks your Saturday nights and Sunday morns with the sounds of the new wave.

3 to 5 a.m.  
**The Nightmare Continues**  
Ray hosts the best of underground metal and punk to break down mindless barriers.

5 to 6 a.m.  
**Scooba Dooba**  
Hamamoto presents an assortment of oddities and niceties during the wee hours.

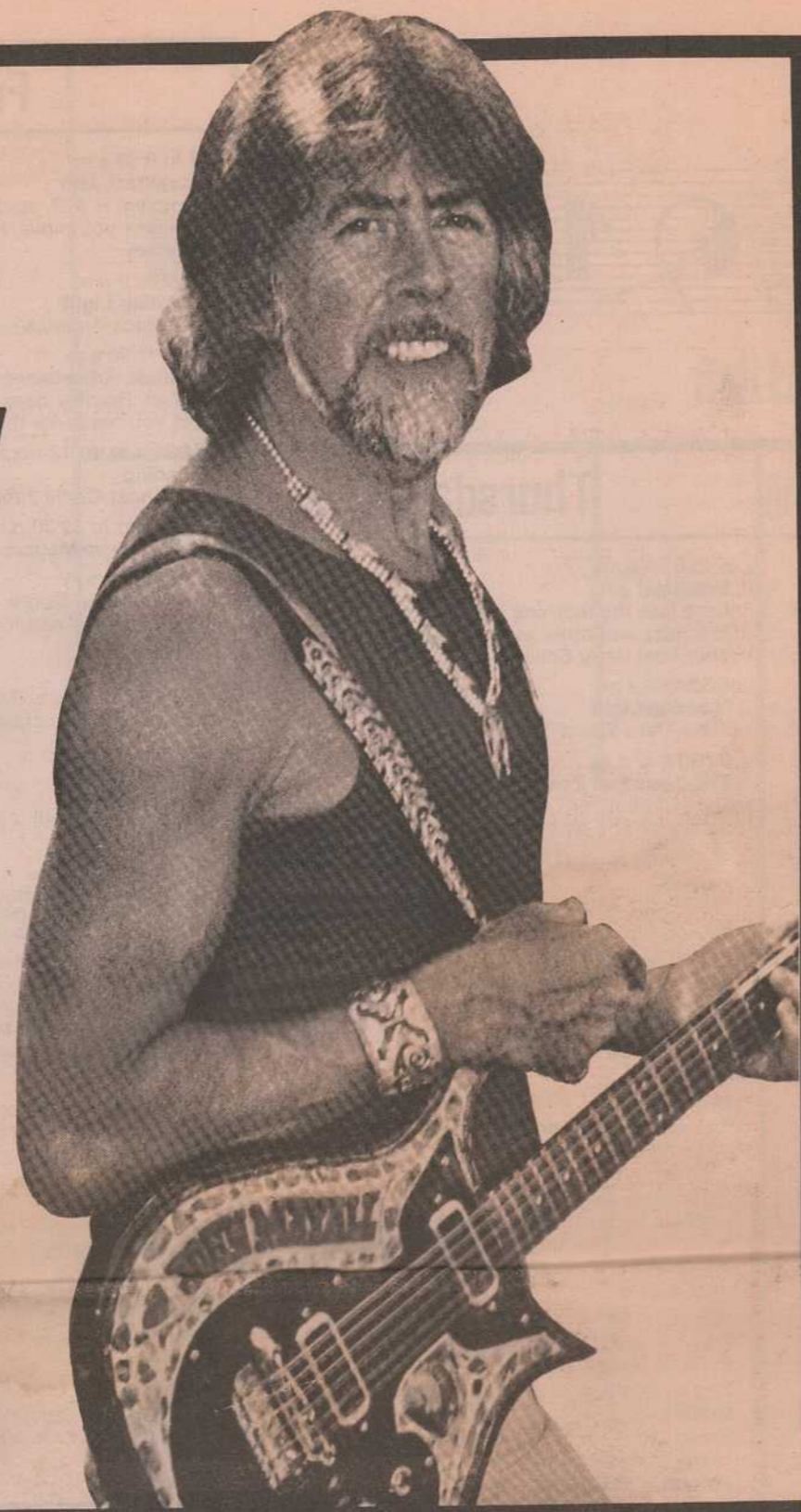
**Program schedule**

	SUNDAY	MONDAY	TUESDAY	WEDNESDAY	THURSDAY	FRIDAY	SATURDAY
6 a.m.	Scooba Dooba						Gospel Connection
7 a.m.		Breakfast Jam	Breakfast Jam	Breakfast Jam	Breakfast Jam	Breakfast Jam	
8 a.m.	Living the Circle of Life	Morning Light	Morning Light	Morning Light	Morning Light	Morning Light	Asian Chimes
9 a.m.							
10 a.m.		Le Cafe Folk	Women or Nothing	Jazz Quart	This Feminine Position	Attitude Adjustment	
11 a.m.							
12 p.m.	Sagebrush Serenade	Reading	Reading	Reading	Reading	Reading	Sagebrush Serenade
1 p.m.		Concerning Gays	La Voz Del Pueblo	Sojourns	New Dimensions Radio	S.O.A.P.	
2 p.m.							
3 p.m.	Bluegrass Express	Radio Libre	Tapestries	Solo Flight	Daydreams	Soul Fusion	Smile Jamaica
4 p.m.							
5 p.m.	Greek Hour	Drive Time Magazine	Drive Time Magazine	Drive Time Magazine	Drive Time Magazine	Drive Time Magazine	American Music
6 p.m.							
7 p.m.	Voice of Polynesia	Pacifica News	Pacific News	Pacific News	Pacifica News	Pacifica News	
8 p.m.		Great Basin Blues	Generic Radio	Aural Decay	Music Latina	KRCL Jukebox	Phono Synthesis
9 p.m.							
10 p.m.	New Dimensions						
11 p.m.	Hearts of Space	Red, White and Blues	Bad Music for Bad People	Night Vinyl	Fret 'N Fiddle		
12 a.m.							
1 a.m.	Tentacles	Winds of the Old Days	Mission Impossible	Altered States	Utah Slavia	Revolutions	Behind the Zion Curtain
2 a.m.							
3 a.m.	Emotional Traffic	Chronic Chaos	RadioActive	Eternity Spin	The Unknown	Variables	
4 a.m.							
5 a.m.	Broken Mirrors	Permanent Waves	Caravan	Nite Roots	Funtime	Gospel Connection	The Nightmare Continues
6 a.m.							Scooba Dooba

# KRCL CONCERT SCHEDULE

September 20th  
Blues Legend John Mayall

Triad Amphitheater



October 10th

Sly & Robbie  
Ine Kamoze  
Yellowman  
Half Pint

Fairgrounds Coliseum



September 24th

Steel Pulse

Triad Amphitheater

## Letters

KRCL always receives letters from our listeners. Some are encouraging, others critical. Whatever you have to say, we appreciate your comments, and will print all letters received. This is, after all, Listeners' Community Radio of Utah. Please address your comments to: KRCL, 208 West 800 South, Salt Lake City, UT 84101.

▲ To KRCL,  
Please send me a copy of the program from the "Thinking Out Loud" series entitled *Breathing Deeply*. I'm also interested in the accompanying reading list—please send it along also. I heard the program broadcast on KUSU-FM and thought it was excellent!  
Thanks!  
Nancy W.

▲ Just wanted to say that everyone of you guys down there at KRCL do an outstanding job of providing Utah with an alternative. Your tunes are great and you provide me with an important source of public information. Keep up the good work, fine people.  
Thanx much,  
Kim R.

▲ I would have wilted away without you. Thank you soooooo much.  
Sanya P.

▲ I was down at Lake Powell getting my boat filled and the attendant asked how much I'd take for my KRCL "T" shirt I was wearing. He offered me \$7, but I told him if he'd make it \$10 I'd donate it in his name to the station. He said if I was going to donate it he'd throw in another \$5.  
Would you send a receipt for \$15?  
Thanks.  
Mike B.

▲ Just a note to say thank you for the tremendous help you gave us the few days preceding our Independence Day weekend. We traditionally have a difficult task attracting blood donors during the summer and that task is exacerbated by holidays. Your timely assistance rallied area residents and helped us provide the needed blood for those whose medical conditions required them to be hospitalized. We, and they, appreciate your responsiveness to community need.  
Sincerely,  
Steve Miller, Director  
IHC Blood Services

▲ Dear KRCL,  
This is just a message of support to you to let you know how much we enjoy the "Reading" program every day. It makes my day, and I always make sure I'm near the radio when "Reading" comes on. The "Daydreams" program and "New Dimensions" are also superb, and have made my working days much more enriched. Because of your high standards, we will keep tuning in to KRCL. Thanks!  
Lise E.

▲ Dear KRCL,  
In retirement I spend a lot of time at home listening to the radio. Your program "Reading" makes my day. I particularly enjoyed Professor Hancock's reading of South American literature. The selections are so vibrant and unusual. I look forward to more of that quality show.  
Best wishes,  
R.D.L. (78 years old)

▲ Dear People at KRCL,  
Sorry I took so long getting this to you, but Radiothon has this bad habit of coinciding with "I'm about to get laid off here at Alta and I'm broke," so I had to wait 'til I was employed. I'll be back behind the Zion Curtain in November, so I'll wander in then and see if you have any t-shirts or mugs collecting cobwebs in a corner somewhere.  
Gawd, do I miss having a decent radio station around.  
Kari

▲ Dear KRCL  
I wanted to note my favorite programs:  
BEST  
1) Sunday Sagebrush Serenade  
2) Mon: Le Cafe Folk  
3) Mon: Great Basin Blues  
4) Mon: Just the Blooze  
5) 3rd Thursday local acoustic artists  
6) Wed: Solo Flight  
7) Thurs: Daydreams  
8) Environmental Updates  
WORST  
Babs DeLay music  
La Voz Del Pueblo  
Women's News  
Thank you very much.  
Patrick C.

▲ Dear Folks at KRCL,  
Just a little note, along with a check, to let you know that you are still appreciated. Yeah, I'm in California and can't get the station but I remember what a relief it was listening to your various off-the-wall programs. Provo does get very hum-drum after more than two minutes listening to generic stations that please Provo's prudish ear. Right now I'm soaking up the atmosphere of So. Cal. and the mindblowing music scene coming out of L.A. What a nice way to recoup after the zoo.  
Anyway, I hope to be tuning in to Radio Free Utah again come August. What I wouldn't give to live in SLC and commute to Provo. But it seems I'll have to be content with the Sounds of Salt Lake City's finest. Keep up the good work and watch out for UFOs from the Cosmic Aeroplane.  
Ciao, baby.  
Diane O.

▲ Dear Radio Free Utah,  
Thanks for the Great Basin Blues, Drive Time, Night Vinyl, The 'G' Men, Star Date, Nuclear Update, *et al.* Keep up the excellent work.  
Enclosed is \$50.00 for more great programming. I still owe another \$50.00 and will be forthcoming as the budget allows.  
Respectfully,  
David B.

▲ Dear KRCL,  
Thank you for the support of the Coop (Salt Lake Food Coop) last week on our "GOTS II" Sandwich Benefit Buffet and Bake Sale.  
We really appreciate the DJs and others who have helped us with production and announcements on the air.  
The event was a success too!  
Thanks,  
Lance



## STORIES: A VIETNAM RETROSPECTIVE

A series of four programs that explores the effects of the Vietnam War on those who fought it and those who fought against it:

1. Raw Edge of Perception
2. The Conflict of Cultures
3. The War at Home: A Media Event
4. Vietnam Revisited and Revised

The series airs on P.A. 91 starting  
October 2 at 7:00 p.m.



Want a new direction  
for your hair?

Ask:  
**SHARON**  
at:  
**FOURTH EAST  
STYLE SHOP**  
"The Hair People"  
152 South 400 East  
355-6902 355-5541

# KRCL makes headlines around the U.S.

The following article was written by Glen Warchol, who writes for United Press International (UPI). It has been released on the UPI wire across the country, and is appearing in newspapers from San Antonio, Texas to Orlando, Florida to Washington, D.C.

**B**ehind the lines of conservative state politics and Mormonism, "Radio Free Utah" serves as a battle station for diversity.

With music programs that vary from gospel to the Grateful Dead, Polynesian to punk, and public affairs broadcasts for every minority from gays to Greeks to senior citizens, a Utah television commentator once described Salt Lake City's KRCL-FM as "the station that offends everybody."

"The common thread is the diverse

nature of the station," said KRCL manager John Greene.

"If you just looked at the major media in Utah, you would come back with a peculiarly narrow spectrum of what Utah is and what Utahns believe. You would perceive a fairly conservative monolith," said Greene. "What you wouldn't know is that Utah is made up of a variety of ethnic groups that have been here since the wagon trains arrived."

Chuck Bradley, once a member of a soul band and now a delivery driver, hosts a weekly soul music show. In a state with a 1 percent black popu-

Lewis Downey

In particular, the station's weekly homosexual information and music program, *Concerning Gays and Lesbians*, flies in the face of mainstream Utah mores.

Mickey, the show's lesbian host, never uses her full name and prerecords the show because, she said, "We don't want to be here when some crazed fool decides to do something about the [homosexuals] on the radio."

Mickey scoffs at the suggestion the show indoctrinates young Utahns to homosexuality.

"I do it to prevent suicide. I've seen too many gays kill themselves," she said. "We're not recruiting gays, we're a lifeline."

Although Greene has taken more



Jeffery Montague

lation, KRCL is about the only place you can find black music, Bradley said. Or, for that matter, the music of American Indians, Southeast Asians, Chinese or Appalachians.

"You talk about a rainbow coalition," said Bradley of the volunteer KRCL staff. "Go to one of the volunteer training sessions and see the people there. You think 'How ... can you people have anything in the world in common.'"

"But they do. And it works," he said. The 7-year-old community station, however, is better known as a tenacious—often strident—voice for radical politics and social viewpoints in the state that conservative Republican senators Jake Garn and Orrin Hatch call home.

"We try to provide a counterpoint to conservative political dogma," Greene said. "The common political perspective at the station would have to be progressive. It's not always left—sometimes it's where the far right and the far left meet."

"We're aware of the community in which we live," he said. "We don't want to jeopardize that frivolously. And we don't have much flak with the community, which frankly surprises me."

But KRCL's programmers are deft at being Utah's radical voice. "We all take care of KRCL," said Bradley, whose fans often request X-rated material. "We know if somebody abuses it, KRCL is gone."

Greene says the success of KRCL's biannual fund-raising campaign confirms the community's support for the station's politics.

"You can be the best ... rock 'n' roll station in the state," he said, "but when you try twice a year to talk people into spending \$40 for a KRCL t-shirt—you better have something to say."



## Thanks

謝謝 5552333 merci Faka Estai Gracias Salomalo 29292 Ahe'hee Cañon Molo ETXAPICTO Thank you!

Editor's Note: KRCL is always in the mood to thank someone for their kind support. Because of our multilingual audience, we want to thank all our listeners in just some of the languages spoken on KRCL. From left to right: Chinese, Cambodian, French, Samoan, Spanish, Filipino, Laotian, Navaho, Vietnamese, Tongan, Greek and did you guess? English.

## Thanks to our underwriters

**U**nderwriting a show, a public affairs program or a short feature is a way for businesses or individuals to provide financial support for KRCL. Because KRCL is non-commercial, the monies donated are tax deductible. In exchange for the donation, KRCL broadcasts a brief message which is descriptive in nature and non-promotional. The message is a means for KRCL to recognize this valuable contribution.

Underwriting is an extremely important layer of financial support for the station. Approximately 15 percent of the current budget is derived from underwriting. The goal is to raise that level to 25 percent.

If you are interested in underwriting a program, please call 363-1818 during working hours and a packet of information will be sent to you. If you are a listener, please support our underwriters.

**Acoustic Music**  
857 East 400 South  
Salt Lake City

**Cabin Fever**  
66 West 400 South  
Salt Lake City

**The Carpet Barn**  
3725 So. Redwood Road  
Salt Lake City

**Catalyst Magazine**  
Salt Lake City

**Cosmic Aeroplane**  
258 East 100 South  
Salt Lake City

**Coyote Bills**  
206 South West Temple  
Salt Lake City

**D. B. Coopers**  
19 East 200 South  
Salt Lake City

**Foothill Oriental Rugs**  
1464 Foothill Drive  
Salt Lake City

**Gardiner Distributing**  
554 West 100 South  
Salt Lake City

**Harvey's**  
206 South West Temple  
Salt Lake City

**In The Mood**  
850 East 900 South  
Salt Lake City

**Intermountain Booksellers Assoc.**  
Salt Lake City

**Intermountain Guitar and Banjo**  
712 East 100 South  
Salt Lake City

**Performance Audio**  
2358 South Main  
Salt Lake City

**Phillips Gallery**  
444 East 2nd South  
Salt Lake City

**Rio Grande Cafe**  
270 South 455 West  
Salt Lake City

**Smokey's Records**  
1515 South 1500 East  
Salt Lake City

**Sundance**  
Provo Canyon, Utah

**Utah Endowment for the Humanities**  
10 West Broadway  
Salt Lake City

**Utah Museum of Natural History**  
University of Utah  
Salt Lake City

**Wasatch Touring**  
702 East 100 South  
Salt Lake City

**Yengich, Rich, Xaiz and Metos**  
72 East 400 South  
Salt Lake City

**The Zephyr**  
301 South West Temple  
Salt Lake City



Monday, 12 midnight  
Tuesday, 7:30 a.m.  
Wednesday, 8:30 p.m.  
Thursday, 7:30 a.m.  
Friday, 9:30 p.m.



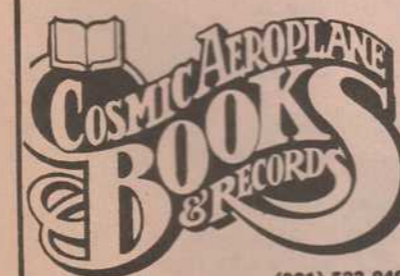
702 E. 100 S., SLC / 359-9361

Phillips  
Gallery

444 East 200 South  
Salt Lake City, Utah 84111  
801-364-8284



Cosmic Aeroplane still buys and sells used books and records. We pay top dollar for entire collections, sets and individual items. Please call or stop by if we can be of service to you.



(801) 533-9409  
258 East 100 South  
Salt Lake City, Utah 84111

# READING schedule

## September/October—Monday through Friday—11:30 a.m.

### Monday

**Mon. Sept. 1 -Sept. 5:** Carleen Jimenez completes the reading of Harriet Doerr's novel *Stones for Ibarra*.

**Mon. Sept. 8:** Claude Duvall of the Noh Oratorio Society of San Francisco, California will read *The Farmer's Daughter*, a short story by William Carlos Williams.

**Tues. Sept. 9 & Wed. Sept. 10:** Babs DeLay will be reading selections from Gertrude Stein.

**Thurs. Sept. 1 & Fri., Sept. 12:** Joe Hancock will continue with his readings of the Latin American writers.

**Mon. Sept. 15:** Claude Duvall of the Noh Oratorio Society reads a short story by Thomas Mann, *The Wardrobe*.

**Tues, Sept. 16:** Another story by Thomas Mann, *A Glean*, read by Claude Duvall of the Noh Oratorio Society.

**Wed. Sept. 17:** Constance Denning will read a short story by the 19th century French author, Dumas.

**Thurs. Sept. 18:** Stephanie Pace will read *Sex Education* by Dorothy Canfield.

**Fri. Sept. 19:** Selections from *Love Medicine* by Louise Erdrich will be read by Stephanie Pace.

**Mon. Sept. 22 - Fri. Sept. 26:** Participants in the Writers at Work Park City Workshop will be reading from their work.

**Monday:** Marily Krysl from Boulder, Colorado, will read her short story *Snugerochka*.

**Tuesday:** Gordon Weaver will read *For Immediate Review*.  
**Wednesday & Thursday:** John Legitt reads selections from his novel *Making Belief*.

**Friday:** Terry Tempest Williams reads selections from her work.

**Mon. Sept. 29 - Thurs. Oct. 2:** Desiree Mays will be reading from the biography and work of Karen Blixen/Isak Dennison. Readings are taken from a biography *Out of Africa* and a short story, *The Sailors Tale*.

**Fri. Oct. 3:** Richard Scharine reads *Battle Royal* by Ralph Ellison

**Mon. Oct. 6 & Tues. Oct. 7:** American poet living in Utah, Mark Strand, reads from his work.

**Wed. Oct. 8 - Fri. Oct. 10:** Paul Banham will be reading selections from James Thurber's novel *Life and Hard Times*.

**Mon. Oct. 13 - Mon. Oct. 20:** Yusuf Spires from the Noh Oratorio Society will read the well-known novel by the Latin American writer Juan Rulfo, *Pedro Paramo*.

**Tues. Oct. 21 & Wed. Oct. 22:** Marilyn Scharine will read an excerpt from *To the Lighthouse* by Virginia Woolf.

**Thurs. Oct. 23 & Fri. Oct. 24:** Marilyn Scharine reads from *Revelations—Excerpts from Women's Diaries*

**Mon. Oct. 27:** An interview with Eric Bauresfeld, head of the Drama and Literature Dept. of radio station KPFA in Berkeley.

**Tues. Oct. 28 - Fri. Oct. 31:** We bring you scary stories to usher in All Hallows Eve. Our readers will be Constance Denning, Desiree Mays, Paul Banham and Phyllis Barber. Tune in and let us make your afternoons dark.

Readings for KRCL is produced by Carleen Jimenez and engineered by Roly Pearson

# SHORT FEATURES

Day	Time	Program
Monday	7:00 a.m.	In The Public Interest
	9:55 a.m.	Sounds of Science
	10:30 a.m.	Byline
	11:27 a.m.	Environmental Update
Tuesday	7:00 a.m.	Central America Update
	9:55 a.m.	Women's News
	11:27 a.m.	In The Public Interest
	3:57 p.m.	Byline
Wednesday	10:00 a.m.	Sunspot
	11:27 a.m.	In The Public Interest
	1:55 p.m.	Nuclear Issues Report
	3:57 p.m.	Byline
Thursday	7:00 a.m.	Wilderness Update
	10:30 a.m.	Women's News
	11:27 a.m.	In The Public Interest
	3:57 p.m.	Byline
Friday	7:00 a.m.	Weekend Entertainment
	11:27 a.m.	In The Public Interest
	2:00 p.m.	Youth on the Air
	3:57 p.m.	Byline
Saturday	6:00 p.m.	Central America Update
	7:30 p.m.	Weekend Entertainment
	12:00 p.m.	Weekend Entertainment
	1:00 p.m.	In The Public Interest
Sunday	11:00 a.m.	Women's News
	12:00 p.m.	Wilderness Update
	1:00 p.m.	In The Public Interest
	3:00 p.m.	Environmental Update
Monday	7:00 a.m.	Sounds of Science
	4:57 p.m.	Sunspot
	8:00 p.m.	Sunspot
	8:00 p.m.	Sunspot

**DAILY**  
Stardate airs at 8:00 a.m., 5:30 p.m. and 10:00 p.m.  
Morning Light airs Monday through Friday at 8:30 a.m.  
Monday "Consider the Alternatives"  
Tuesday "First Person Radio"  
Wednesday "Common Ground"  
Thursday "Special Interest"  
Friday "In Black America"



# NUCLEAR SUMMER

The Sun produces the energy equivalent of 100 million 10-megaton hydrogen bombs every second. And that's nothing compared to some stars. On Star Date we'll tell you about all kinds of fun, space-related facts like that.

**KRCL-FM91**

# i INS & O UTS

## Volunteer activities at a glance..... by Cathy Siegel

In each issue of the *Program Guide* we mention any new volunteers who have joined us, and say goodbye to those who must leave, congratulate those who deserve it, and always have multitudes to thank. As we move into the cooler, crisper days of Autumn, KRCL is fortunate to have increased our ranks once again. This station could not survive in the manner it does without the aid of our volunteers. Our heartfelt thanks to all of you.

### Spinning Discs

Sue Tidwell has rolled in with "Emotional Traffic" Monday from 1-3 a.m. Brian Kelm, host of Great Basin Blues has returned, and John Rokich takes over Monday nights 9:30-11:30 with "Red, White and Blues." Brian Jaramillo is your host for "Chronic Chaos," Tuesday 1:30-3:30 a.m. He's

followed by Lance McCune and Brian McDonald at 3:30-6 a.m. with "Permanent Waves." Shauna Jones will play new music for you on "Bad Music for Bad People," Tuesday nights 9:30-11:30. Rick Stayner hosts "Caravan" Wednesday 3:30-6 a.m., and Butch Shumway rejoins the Wednesday "Breakfast Jam." Eric Anderson hosts "The Unknown" Friday during the wee hours of 1:30-3:30 a.m. Dave Bowyer has "beaten the rooster" and moved into "Revolutions" Friday 11 p.m.-2 a.m., and Derek Smith joins "Variables" Saturday 2-4 a.m.

### Packing Bags

George Richer, co-host of the Friday "Breakfast Jam," has moved to Pennsylvania. Eric Gistler, co-host of "Variables" is off to the University of Puget Sound in Washington.

### It's a Girl

Congratulations to Tuesday "Drive Time" host Dan Maryon and his wife Dorothy on the birth of Katharine.

### In Gratitude

Many thanks to Deborah Levine for producing the KRCL "News Magazine" while Donna was gone; Thanks to Dave Jacobs and Bill Komlos for giving technical assistance to Lewis; Thanks to Dan Benaducci, Cindy Bickoff, Chris Gittins, Lynne McCue Hamilton, Shari Hildreth, Lisa Mace, Nate Moore and Rick Stayner for hours of helping Cathy in the office; Thanks to Annina Mitchell for saving our plants; and thanks to all who helped with the "Hey World Reggae Festival"—it was a tremendous success.

## Thinking Out Loud

THE UTAH HUMANITIES RADIO PROJECT

### CHINA:

## Notes on the Revolution-in-Progress

Wednesday, September 3, 7:00 p.m.  
Thursday, September 18, 11:30 a.m.

## The Land, The One and The Many: Literature Looks at Utah

Wednesday, October 1, 7:00 p.m.  
Thursday, October 16, 11:30 a.m.

A Project of the Utah Endowment for the Humanities

Dulcimers  
Guitars, Lessons  
Repairs

**Acoustic Music**  
857 East 4th South  
Salt Lake City, Utah 84102  
Call (801) 531-7066

**Rio Grande Cafe**  
A FINE MEXICAN CAFE  
RIO GRANDE TRAIN STATION  
453 W. 300 SO.

FROM THE HEARTS OF SPACE

CONTEMPORARY  
AND TRADITIONAL  
SPACEMUSIC

## SUPPORT *The Alternative*

All Contributions are Tax-Deductible

Name \_\_\_\_\_  
Address \_\_\_\_\_  
City \_\_\_\_\_ State \_\_\_\_\_ Zip \_\_\_\_\_  
Telephone \_\_\_\_\_

### MEMBERSHIP DUES (ANNUAL)

- \$15—Low-Income, Student, Elderly
- \$20—Supporting (regular)
- \$35—Supporting Plus KRCL T-Shirt!
- \$50—Sustaining (May be paid \$10/month) Plus KRCL T-Shirt!
- \$100 (or more)—Patron (May be paid \$25/month) Plus KRCL T-Shirt!

- New Subscription
- Renewal/Addition

Mail to:



**KRCL 91 FM**

Listener's Community Radio of Utah  
208 WEST 800 SOUTH  
SALT LAKE CITY, UTAH 84101  
TELEPHONE 801-363-1818