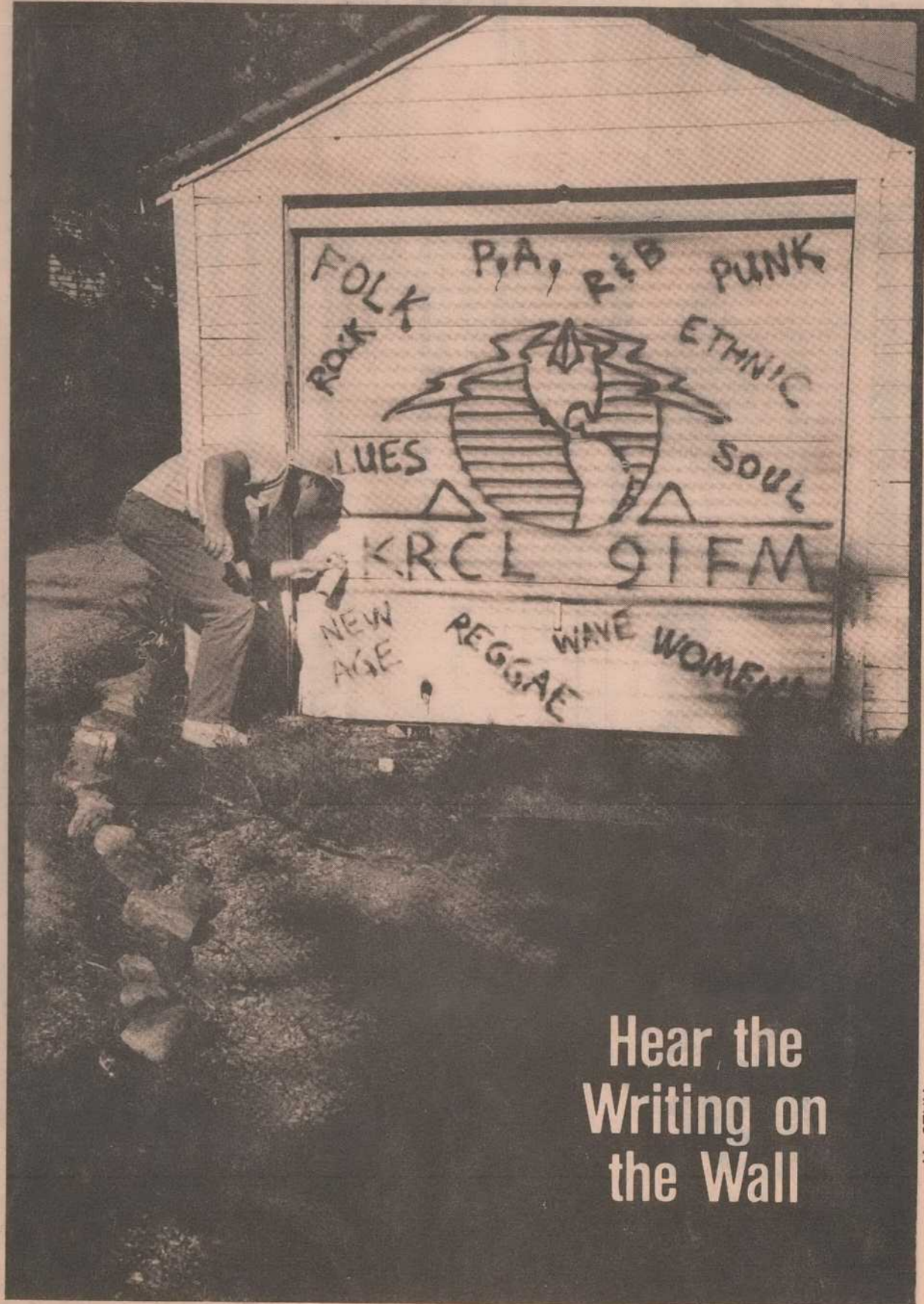
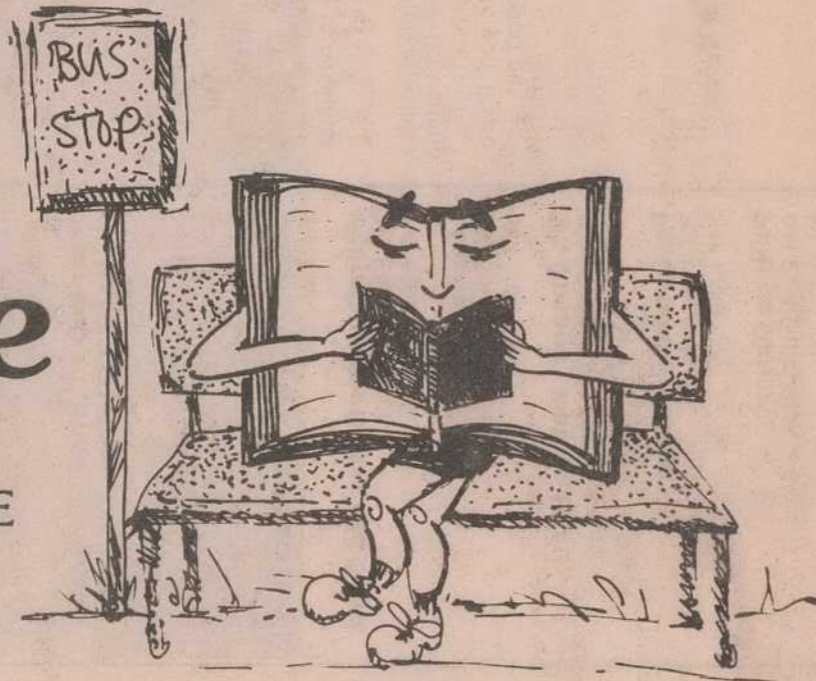


Book Bizarre

KRCL BOOK & RECORD BIZARRE

SAT., JUNE 13



Hear the Writing on the Wall

M. STUM

208 West 800 South, Salt Lake City, Utah 84101
Phone (801) 363-1818

Non-Profit Organization
U.S. Postage
PAID
Salt Lake City, Utah
Permit Number 3973

Please notify us of any change of name or address.
The post office will not forward program guides.



dedicated to the healthy enlivening of the Wasatch Front

Discover the richness and diversity that is growing in our own backyard. Read Catalyst Quarterly.

the arts — business — children — education — ecology — food and nutrition — goods for growth — health, healing & bodywork — movement — psychic arts — psychology, therapy/counseling — spiritual practices — time out and travel — women

Free at newsstands. Or subscribe!

I enclose \$5 for one year of Catalyst Quarterly.

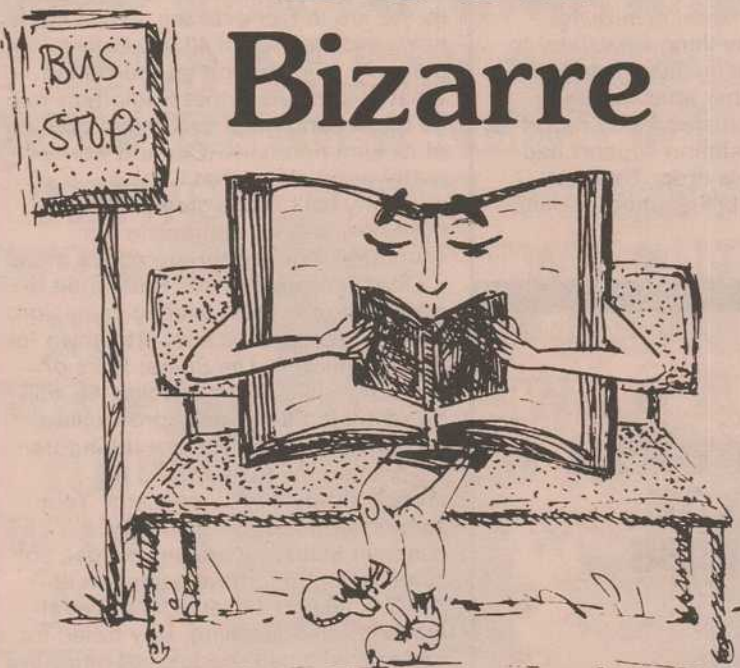
Name Address

Send to:

Catalyst Quarterly 140 McClelland St. Salt Lake City, UT 84102

THE 1ST ANNUAL

Book Bizarre



(IF ALL THINGS GO AS PLANNED) KRCL BIZARRE BOOK & RECORD BAZAAR

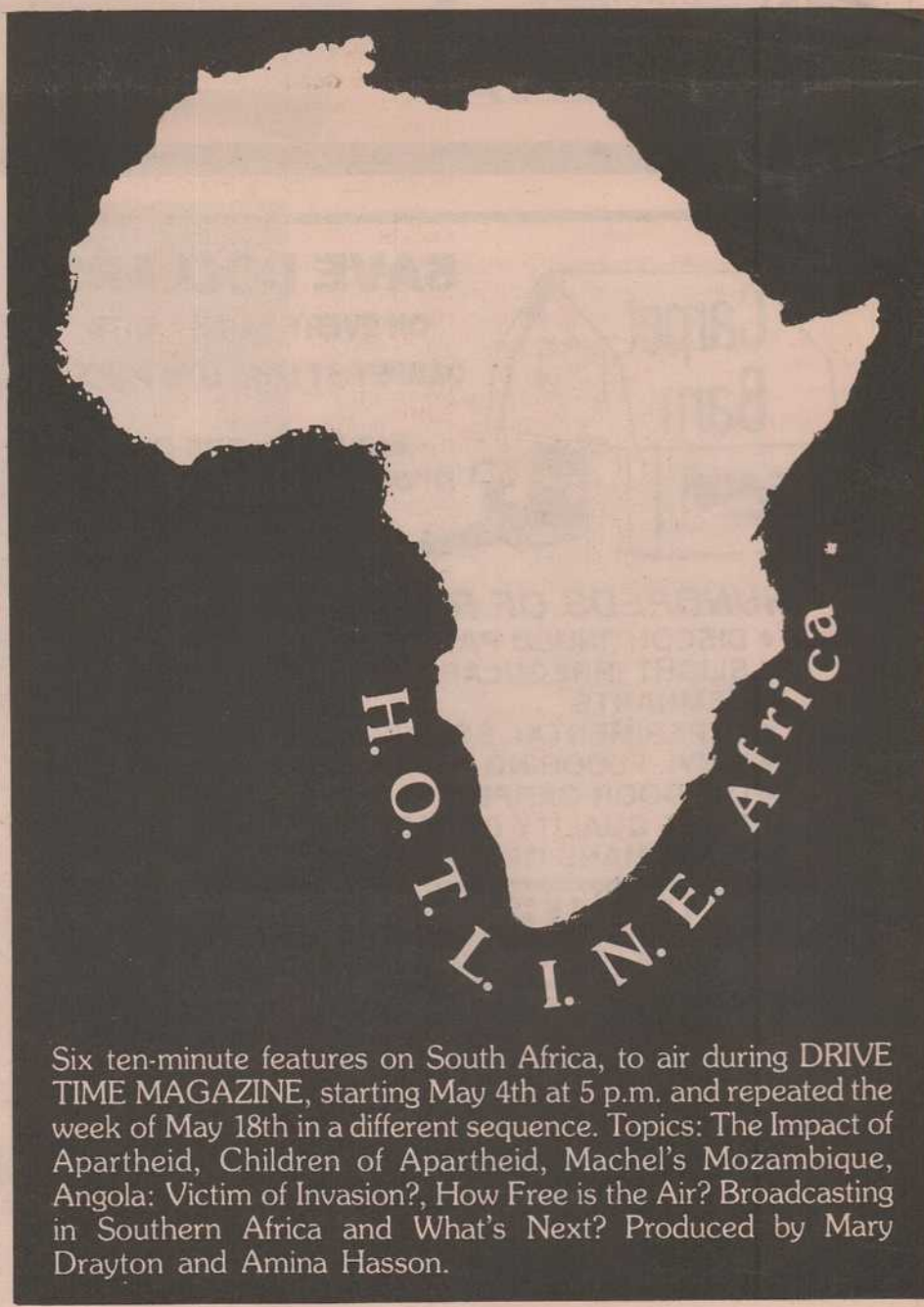
Saturday, June 13th 10:00 a.m. - ?

If you have books and records you no longer want, please donate them to KRCL for the bizarre book and record bazaar. Books, books and more books ... 50¢ and up. Records, records and more records... Also 50¢ and up. Please drop off your used books and records at KRCL, 208 West, 800 South, SLC before June 12th.

DEAD GOAT SALOON



LIVE MUSIC 7 NIGHTS A WEEK 328-GOAT



Six ten-minute features on South Africa, to air during DRIVE TIME MAGAZINE, starting May 4th at 5 p.m. and repeated the week of May 18th in a different sequence. Topics: The Impact of Apartheid, Children of Apartheid, Machel's Mozambique, Angola: Victim of Invasion?, How Free is the Air? Broadcasting in Southern Africa and What's Next? Produced by Mary Drayton and Amina Hasson.



...a series of 10 minute modules on a whole spectrum of impressions of the Latino presence in the United States. Producer Elizabeth Perez Luna traveled throughout the country to record interviews, music and sounds that reveal the richness and presence of LATINO VOICES. Topics include:

Growing Up Latino, Parish Power, Latinos in the Movies, The Heart of El Barrio, Stereotyping Latinos and New Music Composers.

The series can be heard during MUSICA LATINA, Thursdays at 8:30 p.m.

Thanks SPRING RADIO KRCL THON '87

With over \$7,000 being collected prior to the start of Radiothon, shortening the ordeal for all of us by three days, and total donations exceeding \$48,000, this was a hugely successful radiothon. Our listeners once again have borne the weight of supporting community radio.

KRCL thanks the following businesses and individuals for their donation of premiums to our Spring Radiothon.

- Afterwords, Angelino's Delicatessen, Ballet West, Benihana of Tokyo, Bird's Cafe, Black Sea Pottery, Blue Mouse Theatre, Brian Rogers / S & J Texaco, Burr Trail Legal Defense Fund, Cafe Central, Canella's, Chrysalis Body Development, Cole's Footbags, Cosmic Aeroplane, Dana Wanders, Domus, Dream Garden Press, Duncan/Hamilton Productions, Theatre in the Square, Ec-Lec-Tic, Fourth East Style Shop, Gibbs M. Smith, Inc., Grunts & Postures, Gypsy Moon Emporium, Hansen Planetarium, Howard Lundgren, Howe Brothers, Humane Society of Utah, In the Mood Hair Design, Incentive Sampler, Intermountain Guitar & Banjo, Intertwine, Jeweler's Guild, John Johnson, Junior's Tavern, King's English Bookstore, Kirkham's Outdoor Products, Kyoto, Local Color Art & Frame, Michael Martin, Network Magazine, New Shakespeare Players, Park City Ski Area, Peak Performance, Pinecrest Bed & Breakfast Inn, Pioneer Theatre Co., Planned Parenthood Assn. of Utah, Plitt Theatre Co., Quarterly West, Raspberry Records, Repertory Dance Theater, REI, Rio Grande Cafe, Ririe Woodbury, Roly Caps, Salt Lake Acting Company, Sandy Stewart and Creative Glass, Sensible Media, Silver Fork Lodge, Smokey's Records, Sound Off Records, Steve Kuhnhausen

Sun Futon, Utah Holiday, Utah Museum of Natural History, Utah Opera Company, Utah Symphony

Waking Owl Books, Wasatch Publishers, Inc., Wasatch Touring, Wildrose Mountaineering, Wynfield Inns

KRCL thanks the following establishments for their donation of food during Spring Radiothon:

- Angelino's Delicatessen, 1172 Brickyard Road; Bagel Bay, 50 South Main; Banbury Crossing, 705 South 700 East; Cafe Central, 104 Trolley Square; Chef Trujillo's, 345 West 700 South; Crompton's Roadside Attraction, 5195 Emigration Canyon; Free Wheeler Pizza, 2150 South 700 East; Godfather's Pizza, 612 Trolley Square; McDonalds, 242 South 700 East; Nature's Way, 416 East 900 South; Park Cafe, 604 East 1300 South; Pasta Mulino, 859 East 900 South; Peery Pub & Cafe, 110 West 300 South; Pie Pizzeria, 1320 East 200 South; Red Iguana, 736 West North Temple; Rio Grande Cafe, 270 So. Rio Grande; The Old Spaghetti Factory, 189 Trolley Square; TLC Pastries, 1140 Brickyard Road; Upper Crust, 1362 Foothill Drive; Viva la Pasta, 39 Post Office Place

Cabin Fever

from ridiculous to sublime greeting cards & discussions that break the monotony!

66 WEST FOURTH SOUTH



2358 So. Main Salt Lake City, Utah 84115 801-466-3196



(801) 533-9408 258 East 100 South Salt Lake City, Utah 84111



1464 Foothill Drive Salt Lake City, Utah 84108 (801) 582-3500

KRCL Public Affairs Schedule By Donna Land Maldonado

Hope you were able to tune in for parts of the Women Aloud celebration. It was truly a gratifying experience. In case you missed it, some of the programs are being repeated. Check the schedule for some of the enlightening programs.

Mucho thanks for the strong support of "The Secret Wars of the CIA" with John Stockwell during Radiothon. The hour-long program received \$780 pledged support! Much beyond our expectations. All the pledges are much appreciated... especially the "Hush Money" which cut the 'Thon by three days.

Lots of new, provocative programs will be airing, so mark your calendar. Better yet, hang the schedule so you will remember when you'll need to be tuned to KRCL. See separate highlights of particular programs. Also, a couple of short features on Africa and the Latino presence will help toward understanding and appreciating that and those who contribute to the web of life. See short feature schedule for days and times.

Desertaire will be taking the usual summer hiatus. Therefore, the May performance is a must. It's also a very special one: the fifth anniversary for the live remote broadcast.

Once again, thanks from the staff and volunteers for the successful pledge drive.

—Donna

SUNDAY

First Person Radio
8:30 a.m.

"News, information and perspectives from Indian country. Migizi Productions.

New Dimensions
9 p.m.

Often referred to as "the whole earth catalog of the air," New Dimensions is widely acclaimed for its thoughtful and intelligent coverage of life-enhancing topics. Hosted by Michael Toms.

May 3: How to enrich and enliven your relationships, with Laura Huffines; practical ways to realizing your own beauty, compassion and power.

May 10: "The Atomic Comics" Fran Peavy and Charles Varon make light of the world's darkest madness through their incisive and zany commentaries.

May 17: "Inner Listening: The Path to Deep Communication" with Barbara Metcalf, a portrait artist, illustrator and author of *For The Child In You: With Love From Rebecca*.

May 25: "Alcohol: The American Addiction" with Mark Abrams, psychotherapist and author.

June 1: "New Realities: Science and Mysticism" with Renee Weber, author of *Dialogues With Scientist and Sages*.

June 8: "Creativity as a Way of Life" with Michael Ray, professor of marketing and communication, Stanford University.

June 15: "The Heart of the Goddess" with Hallie Audten Eaglehart and Karen Vogel; getting in touch with Mother Earth.

June 22: "Adventures of the Mind" with Joseph Schilton Pearce, author of *Magical Child* (highly recommended by the producers).

June 29: "Afghanistan: Another Holocaust" with Robert Cabot and Bob Fuller.

Music from the "Hearts of Space"
10 p.m.

This show combines the best of the new electronic and electro-acoustic Spacemusic. It is brought together into lyrical, evocative journeys with minimal commentary. An Anna Turner, Stephan Hill Production.

MONDAY

Morning Light
8:30 a.m.

"Consider the Alternatives," a SANE production on alternative notions of today's global concerns.

Reading
11:30 a.m.
See Reading Schedule.

Our Arts
12:00 noon
Interviews with local or visiting artists produced by hosts Desiree Mays, Carlie Jimenez, or Marilyn Scharine.

May 4: Desiree Mays discusses the Utah Opera Company's production of "La Traviata."

May 11: Carlie Jimenez talks with Peter Briggs, director of the Nora Eccles Harrison Fine Arts Center, at Utah State University in Logan, Utah.

May 18: Marilyn Scharine talks with Happy Anderson of the Song Writers Association about an upcoming conference for songwriters.

May 25: Desiree Mays interviews Linda Albertano from Los Angeles, a performance artist with Alice Cooper.

June 1: Desiree Mays discusses a new woman's book store, "A Woman's Place," with the creator.

June 8: Gayle Weyher and Carlie Jimenez discuss Solstice Sun Tunnel Excursions.

June 15: Joycean scholar and Carlie Jimenez talk about Readings from *Ulysses* by James Joyce.

June 22: Featuring Writers at Work conference.

June 29: Fred Adams talks with Marilyn and Richard Scharine about the Utah Shakespeare Festival.

Concerning Gays and Lesbians
12:30 p.m.

News, information and interviews from Utah's gay and lesbian community. With Mel, Mickey and Antonia.

P.A. 91
7 p.m.

"Thinking Out Loud" a project of the Utah Endowment for the Humanities, produced by Jeffrey Montague.

May 4: "China: Notes on the Revolution-In-Progress." The voices of both Chinese and American scholars explore the effects of the new economic policies.

May 11: "The Land, The One and The Many: Literature Looks at Utah," as viewed by writers, both Mormon and non-Mormon, sympathetic and hostile.

May 18: "Cultural Literacy: Whose Books? Which Culture?" examines attempts to codify a set of essential texts that are necessary for a literate democracy.

May 25: "Stepping Back For A Closer Look: The Future of the Humanities in the Academy" takes the approach that there is a danger, perceived if not real, that humanities topics are losing their place in college study life.

This concludes the "Thinking Out Loud" series. Watch and listen for future programs produced by Jeffrey Montague.

June 8 begins a series presenting Noam Chomsky on various political issues:

June 8: A one-hour special "International Terrorism: The Problem and the Remedy" featuring Noam Chomsky, professor of Linguistics at MIT. See separate ad.

June 15: "Terrorism: The Politics of Language." Chomsky discusses how the use of language frames and controls political debate.

June 22: "The Propaganda System." How the American propaganda system functions in manipulating public opinion.

June 29: "Historical Engineering." Using the Vietnam War as an example, Chomsky explains how history is engineered to serve interests and goals of the state.

TUESDAY

Morning Light
8:30 a.m.

"First Person Radio"—Native American weekly news and information.

Reading
11:30 a.m.
See Reading Schedule.

Handicapped
12:00 noon

Host Linda Reeder talks with those who are disabled or work with the "handicapped."

Enfoque Nacional
1 p.m.

A Spanish national news program en Espanol. A Western Community Bilingual Radio and Radio Bilingual production.

P.A. 91
7 p.m.

The adventures of Jack Flanders in "The Fourth Tower of Inverness" continues.

May 5: "Past Lives Come Back"

May 12: "Jack, Please Come Back"

May 19: "Green Eyes"

May 26: "Whose Eyes Did the Dragon"

June 2: "The Lotus Jukebox"

June 9: "The Secret Laboratory"

June 16: "Higher Forces at Work"

June 23: "Along the Dotted Line"

June 30: "Hit the Road, Jack"

WEDNESDAY

Morning Light
8:30 a.m.

"Common Ground," a series on World Affairs produced by the Stanley Foundation.

Reading
11:30 a.m.
See Reading Schedule.

Fairmenist Revolution
12 noon

Host Mack Gift explores the consciousness towards humanism, the letting go of stifling habits and attitudes.

P.A. 91
7 p.m.

"Churches of the Subgenius" produced by Robert Nelson and Doug Wellman, KPFA continues for two more weeks.

May 6: Part 4

May 13: Part 5

This ends the comedy series. Let us know what you think about the series presented and whether or not we should look for other comedy series. The next two weeks are presentations of locally produced programs that aired during the Women Aloud weekend in March.

May 20: "Birthrights." Current birth options in Utah, produced by Deborah Levine.

May 27: "Inside Out: Expressions of Young Women." Five high school women discuss issues affecting their lives, produced by Lynn E. K. Komlos.

For the month of June, KRCL presents "Boom Town." See separate ad.

June 3: "The Birth of the Bomb." The program follows the incredible transformation wrought by the 45,000 workers who built Hanford, as well as the frontier lifestyle in the temporary construction camps.

June 10: "Bombs and Butter." The focus: The development of Tri Cities and the benefits and perils of having the local economy based on one defense industry... and the unknown risks as nuclear workers.

June 17: "Swords and Plowshares." A shift from weapons to nuclear power put three nuclear plants in Hanford, resulting in a debt of over 50% of all bonds issued in the U.S., which was only exceeded by the Federal deficit. The program looks at the impact on local governments, power companies and rate payers.

June 24: "Good Fences Make Good Neighbors." Hanford's operations have generated the world's largest accumulation of radioactive waste which cost over 70 million dollars to manage. Even with care, leaks do occur, and concern is voiced by environmentalists, the Yakima Indian Nation, other local governments and anti-nuclear activists. The most controversial questions: Will Hanford become the first permanent repository for waste from all nuclear power plants?

THURSDAY

Morning Light
8:30 a.m.

May 7: TBA

May 14: "Sexism and Militarism" explores the connection between sexism and militarism, between feminism and pacifism.

May 21: Rescheduled "From a Different Perspective: Lebanon."

Middle East Insights: A unique look at the Middle East by experts, ambassadors, congresspeople, military personnel, scholars and ministers of state.

May 28: "The Special Role of the U.S. in the Middle East."

June 4: "Palestinian Perspective"

June 11: "Israel and Central America"

June 18: "Israel and South Africa"

June 25: "Changing Perspectives in Jewish-American Community"

Reading
11:30 a.m.
See Reading Schedule.

Lunch Encounter

12 noon

May 7: Museum Notes with Terry Tempest Williams.

May 14: Utah Issues with Bill Walsh.

May 21: TBA

May 28: "Burr Trail Update: Spring '87." KRCL volunteer, Jerry Schmidt, spent nine days in southern Utah examining the issue. Interviews with county officials, ranchers, tourists and environmentalists reveal there is much more at stake than a 66 mile dirt road. One hour.

June 4: Museum Notes with Terry Tempest Williams.

June 11: Utah Issues with Bill Walsh.

June 18: TBA

June 25: "Women and Children Last." Ruth Sidel discusses poverty vs. the American Dream and the effects of poverty on American women and children. One hour.

Lunch Encounter
12:30 p.m.

May 7: WINGS: Women's International News Gathering Service.

May 14: It's the Law with Tineke Van Dijk of Utah Legal Services.

May 21: Senior Sound Off with Percy Devine, Utah Division of Aging.

May 28: "Burr Trail" continues.

June 4: TBA

June 11: It's the Law with Tineke Van Dijk.

June 18: Senior Sound Off with Percy Devine.

June 25: "Women and Children Last" continues.

New Dimensions Radio
1:00 p.m.

A rebroadcast of Sunday's 9 p.m. program.

P.A. 91
7 p.m.

May 7: Due to the John Stockwell special last month, "Quest for Peace" continues with part II: "Pacifists" focus on early religious pacifists, conscientious objectors during World War II.

May 14: "World Law and Order" looks at the various ways that have been attempted to end war.

May 21: "The Bomb: To Ban or Not To Ban?" End of series.

May 28: "Quietly Eating Radio-activity." Dr. Rosalie Bertell explores the hidden dangers of low level radiation in our present environment. She also looks at the little-publicized U.S. failed nuclear test "Mighty Oak."

Produced by The Other Americans Radio.

June 4: "Nicaragua Women: The Revolution within the Revolution," produced by KRCL volunteer Lisa Lucero for the Women Aloud celebration. One hour.

June 11: "The U.S. Media and Central America." A three part series. The first two programs, called "Cross-wired" discuss objectivity and the parameters or bias, editorial decisions, deadlines, etc. The Other Americas Radio production.

June 18: "The U.S. Media and Central America."

June 25: "Objectivity and Complacency."

FRIDAY

Morning Light
8:30 a.m.

"In Black America." Reflections of the Black American experience in contemporary society. A Longhorn Radio Network production.

Reading
11:30 a.m.

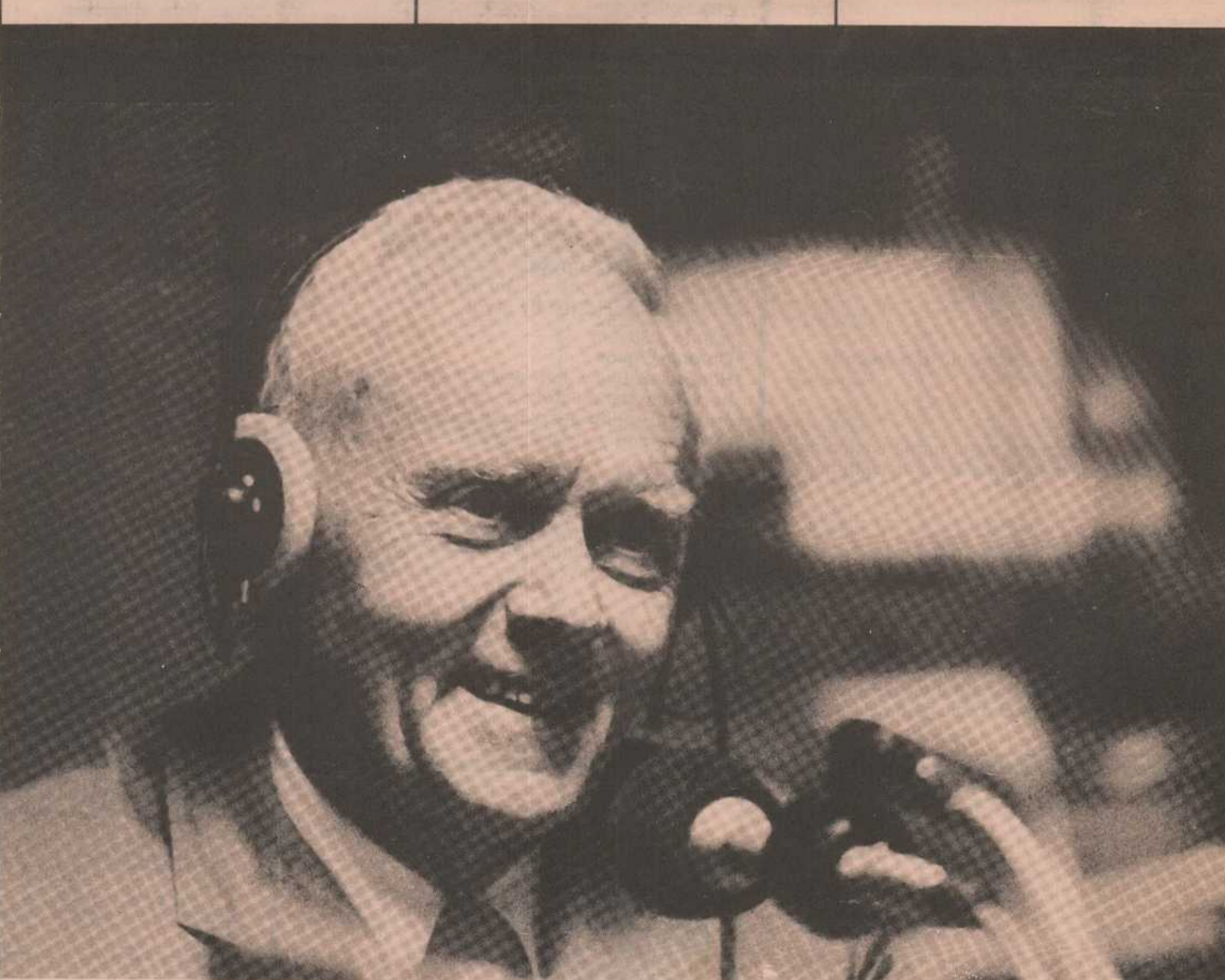
See Reading Schedule.

KRCL News Magazine
12 noon

Alternative news produced by the volunteer news team of KRCL.

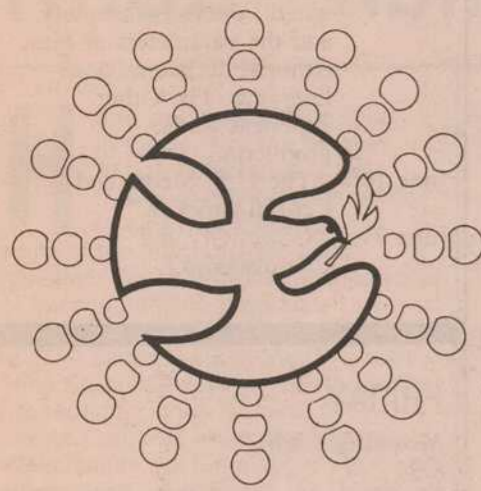
La Voz De La Gente
12:30 p.m.

Host Mary Lucero Xaiz speaks with different guests about issues, concerns, activities and interests of the local Hispanic community.



Joseph Chilton Pearce, author of *Magical Child* Matures, appears on "New Dimensions."

Sunday



6 to 7 a.m.
Scooba Dooba
(continues from Saturday)
Hamamoto presents an assortment of oddities and niceties during the wee hours.

7 to 10 a.m.
Living the Circle of Life
Jim Bilagody with Native American music, news and information. (Donna Land hosts the first Sunday of each month.)

10 a.m. to 2 p.m.
Sagebrush Serenade
Music to ease you from your morning cup through your Sunday afternoon. Manageable folk & rock with a country flavor. Natalie Atherton sits in once a month.

2 to 5 p.m.
Bluegrass Express
Join the Finners—Papa Bob and sons Matt and Rex—for the best in bluegrass; music that is at the root of a lot of the country and folk tunes popular today.

5 to 6 p.m.
Greek Hour
John Shilaos and Mike Katsan host.

6 to 7 p.m.
Voice of Polynesia
Music and information from the Pacific islands.

7 to 9 p.m.
Nexus
New Age Music with John Schellinger.

9 to 10 p.m.
New Dimensions
See Public Affairs Schedule.

10 to 11 p.m.
Hearts of Space
The best of the new electronic and electro-acoustic space music.

11 p.m. to 1 a.m.
Tentacles
Unique music from the avant garde, including jazz, new wave, rock and electronic, with host Kurt Setzer.

1 to 3 a.m.
Emotional Traffic
(i-'mo-shenl, 'traf-ik) Communication of markedly aroused or agitated feelings; music by definition with Sue.

3 to 6 a.m.
Broken Mirrors
Your host Click Dark pumps literary intrigue into the bloodstream of high energy Rock 'n' Roll to create a method to his madness.

Monday

6 to 8:30 a.m.
Breakfast Jam
A mix of country, folk, rock and a sprinkling of blues—goes down well with coffee and toast. Host: Lisa Mace.

8:30 to 9 a.m.
Morning Light
"Consider the Alternatives"—global concerns.

9 to 11:30 a.m.
Le Cafe Folk
Contemporary folk music with a touch of tradition hosted by Donna.

11:30 a.m. to 12 noon
Reading
With host Carlie Jimenez.

12 noon to 12:30 p.m.
Our Arts
With Marilyn Scharine, Carlie Jimenez or Desiree Mays.

12:30 to 1 p.m.
Concerning Gays & Lesbians
News, information and interviews from Utah's gay and lesbian community. With Mel, Mickey & Antonia.

1 to 2 p.m.
Reggae Beat
Hosts Roger Steffens and Hank Holmes present the most current reggae music, information and interviews with reggae artists.

2 to 4 p.m.
Tapestries
Cathy eases you through your Monday afternoon intertwining threads of folk, rock and jazz.

4 to 6:30 p.m.
Drive Time Magazine
A spicy blend of jazz and rock with a pinch of guitar music thrown in for good flavor to keep your Monday simmering, with host Nick Gioello.

6:30 to 7 p.m.
Pacifica News

7 to 7:30 p.m.
P.A. 91
Public Affairs

7:30 to 9:30 p.m.
Great Basin Blues
The best in blues, N.Y. to L.A., Texas to Chicago. Blow away them good old Monday Blues with host Brian Kelm.

9:30 to 11:30 p.m.
Red, White and Blues
Explore the wide variety of this distinctively American musical form, including a smattering of her offspring: jazz, rockabilly, soul, rock-n-roll. J.R. Rokich is your host.

11:30 p.m. to 1:30 a.m.
Winds of the Old Days
Folksy, bluesy rock... Get out your incense and candles. Hosted by Sarah.

1:30 to 3:30 a.m.
Chronic Chaos
Rock, jazz, blues, new wave or even comedy, host Brian Jaramillo takes you on a musical merry-go-round guaranteed to keep your feet stompin' and your sides splittin'.

3:30 to 6 a.m.
Permanent Waves
Sound is electricity. Voices are voltage. Personalities are wavelengths. Music is lifeblood. Join Lance McCune and Brian McDonald on this journey of classic rock and roll.



Tuesday

6 to 8:30 a.m.
Breakfast Jam
Mr. Baggins plays early morning rock to start your day with a smile.

8:30 to 9 a.m.
Morning Light
"First Person Radio"—Native American weekly news.

9 to 11:30 a.m.
This Feminine Position
Cindy Adams or Laurie Bennett bring you music by and for women.

11:30 a.m. to 12 noon
Reading
With host Carlie Jimenez.

12 noon to 12:30 p.m.
Handicapped
With your host Linda Reeder.

12:30 to 2 p.m.
La Voz Del Pueblo
Music for the people with Enfoque Nacional at 1:00 p.m. in Spanish. Host—Oscar Figueroa.

2 to 4 p.m.
Radio Libre
Popular music from the French speaking world, plus news of the French community (with English subtitles). With alternating hosts John Van Den Berghe and Mark Palmer.

4 to 6:30 p.m.
Drive Time Magazine
Dan Maryon picks up your drive with rhythm—reggae and ska plus—as he informs you of local happenings.

6:30 to 7 p.m.
Pacifica News

7 to 7:30 p.m.
P.A. 91
Radio Arts

Jack Flanders' Adventures "The Fourth Tower of Inverness."

7:30 to 9:30 p.m.
Generic Radio
Not really. The playlist reads: reggae, new wave, rockabilly and new music. Programmed by Barb Guy.

9:30 to 11:30 p.m.
Bad Music for Bad People
Shauna plays the best of new music with a twist.

11:30 p.m. to 1:30 a.m.
Mission Impossible
The agents: George Alex and Bob Bedore. The mission: to play two hours of progressive music. Impossible?

1:30 to 3:30 a.m.
Up All Night
Erin Fraser covers what's at the top of the modern music charts in London, Paris, and Sydney.

3:30 to 6 a.m.
Roundabout
Take a circuitous journey from late night new wave through rock and roll, and into early morning new age, folk, acoustic and electronic music with an occasional classical surprise or two. Hosted by Phil.

Wednesday

6 to 8:30 a.m.
Breakfast Jam
Rick Stayner will make the start of your midweek a pleasure by playing a blend of music designed for the morning.

8:30 to 9 a.m.
Morning Light
"Common Ground"—international news.

9 to 11:30 a.m.
The Rhythm Has My Soul
Percolating, heartbeating, blood-boiling rhythms from around the world. Host: Joe DiGangi.

11:30 to 12 noon
Reading
With host Carlie Jimenez.

12 noon to 12:30 p.m.
Fairmenist Revolution
A series for men who consider themselves liberated from their own self oppression or who are beginning an introspective journey toward self liberation. With Mack Gift.

12:30 to 2 p.m.
Sojourns
International contemporary and traditional music. Host: Lewis Downey.

2 to 4 p.m.
Rainbow Rites
Host Lynne Van Dam spins you from red hot rock to cool blues with some golden surprises to maintain balance.

4 to 6:30 p.m.
Drive Time Magazine
Join Mike Anderson for a broad mix of music spanning from classic jazz to the latest in rock.

6:30 to 7 p.m.
Pacifica News

7 to 7:30 p.m.
P.A. 91
Public Affairs

7:30 to 9:30 p.m.
Aural Decay
Old rock and new rock, accentuated with rockabilly, reggae and whatever is handy. Hosted by Dave Santivasi. It may be habit-forming.

9:30 to 11:30 p.m.
Night Vinyl
Host Dave Jacobs combines a blend of 60s and 70s rock and folk classics rounded out with the latest additions to bring you a tasty way to end a Wednesday.

11:30 p.m. to 1:30 a.m.
Altered States
Dave Iverson serves as tour guide for exploring acoustic, electric and keyboard oriented rock plus other oddities just for fun.

1:30 to 3:30 a.m.
Eternity Spin
A rock 'n' roll journey into the mystic, featuring a unique mix of styles bound together with the spirit of magic and adventure. Hosted by Gary Allen.

3:30 to 6 a.m.
Nite Roots
Top rankin' eclectic rock reggae with host Glenn.



Thursday

6 to 8:30 a.m.
Breakfast Jam
Ease into the morning with blends of rock, folk, jazz and other assorted goodies with your host Jerry Schmidt.

8:30 to 9 a.m.
Morning Light

9 to 11:30 a.m.
Women or Nothing
Julie Lueders and Babs DeLay alternate weeks with a show dedicated to female vocalists, women's music, and other music by women. Women's news and information, too!

11:30 a.m. to 12 noon
Reading
With host Carlie Jimenez.

12 noon to 1 p.m.
Lunch Encounter
Refer to Public Affairs schedule.

1 p.m. to 2 p.m.
New Dimensions Radio

2 to 4 p.m.
Daydreams
Modern Impressionism with Mark C. Jackman.

4 to 6:30 p.m.
Drive Time Magazine
Host Bruce Saffran brings you an eclectic mix of music for those who like it a bit less traditional.

6:30 to 7 p.m.
Pacifica News

7 to 7:30 p.m.
P.A. 91
Political Issues

7:30 to 9:30 p.m.
Music Latina
Presented by Juan Gonzales featuring Latin music in a variety of genres from the South American traditional flutes to the American Latin pop scene.

9:30 to 11:30 p.m.
Fret 'n Fiddle
Traditional folk music from here and abroad, depending on your host: Peter Tinker, Paul Truex or Mark Cantor.

11:30 p.m. to 1:30 a.m.
Utah Slavia
Utah's eastern European heritage lives! We focus on the music of Yugoslavia, provided by Craig Kurumada, Craig Miller and Mladen Maric.

1:30 to 3:30 a.m.
The Unknown
Join Eric Anderson for the unknown. A pleasant mixture of guitar oriented new wave and soft-core post-punk, with "modern disco" taking up the final half hour.

3:30 to 6 a.m.
Play It By Ear
Feed your head with musical biscuits from the 60s, 70s, and 80s. Host Erick Scheen serves up new wave, electronic, rock, and progressive music.

Friday

6 to 8:30 a.m.
Breakfast Jam
Motown, R & B, soul, blues, big band, and jazz—music to make you move. Hosted by Maureen.

8:30 to 9 a.m.
Morning Light
"In Black America"

9 to 11:30 a.m.
Attitude Adjustment Session
Chuck Bradley does some soul adjustment to get you ready for the weekend.

11:30 a.m. to 12 noon
Reading
With host Carlie Jimenez.

12:00 noon to 12:30 p.m.
KRCL News Magazine
Produced by Donna Land.

12:30 to 1 p.m.
La Voz de la Gente
Mary Lucero Xaiz talks with different guests about concerns and interests of the Hispanic community.

1 to 2 p.m.
S.O.A.P.
Sounds of a party. Music that will range from mellow-soul to scratching, presented by host Sam Smith.

2 to 4 p.m.
Soul Fusion
Old and new soul and R & B with host Robert Velasquez.

4 to 6:30 p.m.
Drive Time Magazine
Friday brings you the Professor of R & B, Larry Ficks, presenting rhythm and blues, and old rock and roll, plus social issues and information.

6:30 to 7 p.m.
Pacifica News

7 to 9 p.m.
KRCL Jukebox
Inspector Bill Komlos brings you music from the Fifties, Sixties and Seventies to blow your mind, but not your cool!

9 to 11 p.m.
The G Men
The most arresting rock music to be found. Hosts Chris Gittins and Hugh Garner.

11 p.m. to 2 a.m.
Dave's Place
Rock and roll, blues and comedy, with your host Dave Bowyer.

2 to 4 a.m.
Variables
Electronic, holistic, new age music

4 to 7 a.m.
Gospel Connection
Contemporary gospel that encompasses all categories of music. Tune in to Carol and Marvin Dixon for your early morning start.

Saturday

7 to 10 a.m.
Asian Chimes
Music and information from the communities of Laos, the Philippines, China and Viet Nam. Presented by hosts Chara Souratha, Vic Fernandez, Darrell Young and Hang Nguyen.

10 a.m. to 2 p.m.
Sagebrush Serenade
From the best known to the least known rock artists of the Sixties, don't miss "one of KRCL's best" with Dale Carlson.

2 to 5 p.m.
Smile Jamaica
Catch a musical high with Myron Fairbanks and John Reese as they bring you the best in reggae music, dubwise and otherwise. added bonus, "Reggae Beat International," the archives of reggae.

5 to 7 p.m.
American Music
Genre: Rockabilly. Intent: Pure Entertainment. Hosts: Violet Ruybal and Deon Duncan.

7 to 9 p.m.
Phono Synthesis
Host Jon Bray offers the latest in new wave, rockabilly, punk and dance music.

9 to 11 p.m.
No Guarantee
Noise punk, avant rock, avant punk, noise rock, avant noise, punk rock. But, no guarantee. Host Ron Ward.

11 to 3 a.m.
Raunch Radio Intl.
An assault to the senses, a blow to the mind... An action-packed zoomfest featuring your favorite hardcore and speedmetal noises from around the world with host Brad Raunch.

The Nightmare Continues
Ray hosts the best of underground metal and punk to break down mindless barriers.

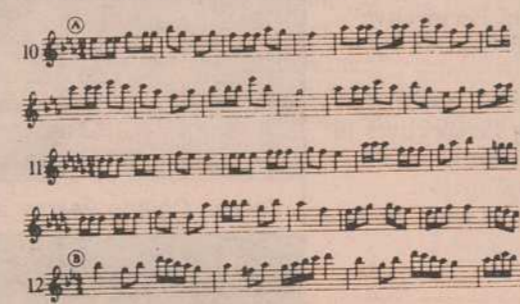
5 to 6 a.m.
Scooba Dooba
Hamamoto presents an assortment of oddities and niceties during the wee hours.

Program schedule

	SUNDAY	MONDAY	TUESDAY	WEDNESDAY	THURSDAY	FRIDAY	SATURDAY
6 a.m.	Scooba Dooba						Gospel Connection
7 a.m.		Breakfast Jam	Breakfast Jam	Breakfast Jam	Breakfast Jam	Breakfast Jam	
8 a.m.	Living the Circle of Life	Morning Light	Morning Light	Morning Light	Morning Light	Morning Light	Asian Chimes
9 a.m.							
10 a.m.		Le Cafe Folk	This Feminine Position	Rhythm Has My Soul	Women or Nothing	Attitude Adjustment Session	
11 a.m.							
12 p.m.	Sagebrush Serenade	Reading Our Arts Concerning Gays	Reading Handicapped	Fairmenist Revolution	Lunch Encounter	KRCL News Magazine La Voz de la Gente	Sagebrush Serenade
1 p.m.	Reggae Beat	Reggae Beat	La Voz Del Pueblo	Sojourns	New Dimensions Radio	S.O.A.P.	
2 p.m.							
3 p.m.	Bluegrass Express	Tapestries	Radio Libre	Rainbow Rites	Daydreams	Soul Fusion	Smile Jamaica
4 p.m.							
5 p.m.	Greek Hour	Drive Time Magazine	Drive Time Magazine	Drive Time Magazine	Drive Time Magazine	Drive Time Magazine	American Music
6 p.m.	Voice of Polynesia	Pacifica News	Pacific News	Pacific News	Pacifica News	Pacifica News	
7 p.m.		Thinking Out Loud	P.A. 91	Consider The Alternatives	P.A. 91		Phono Synthesis
8 p.m.	Nexus	Great Basin Blues	Generic Radio	Aural Decay	Music Latina		
9 p.m.	New Dimensions						
10 p.m.	Hearts of Space	Red, White and Blues	Bad Music for Bad People	Night Vinyl	Fret 'N Fiddle	The G Men	No Guarantee
11 p.m.							
12 a.m.	Tentacles	Winds of the Old Days	Mission Impossible	Altered States	Utah-Slavia	Dave's Place	Raunch Radio Intl.
1 a.m.							
2 a.m.	Emotional Traffic	Chronic Chaos	Up All Night	Eternity Spin	The Unknown	Variables	
3 a.m.							
4 a.m.	Broken Mirrors	Permanent Waves	Roundabout	Nite Roots	Play It By Ear	Gospel Connection	The Nightmare Continues
5 a.m.							
6 a.m.							Scooba Dooba

Program guide

March-April 1987



READING

schedule

May/June Monday
through Friday
at 11:30 a.m.

- May 1:** Three short stories by Grace Paley read by Maxine of Waking Owl Books. These stories are from the book *Later the Same Day* published in 1985 when Paley was living in New York City and Vermont, and teaching at the City College and Sarah Lawrence. As the title of the book indicates, time is the main motif—time passing. The stories are: "Mother," "Lavinia: An Old Story," and "Love."
- May 5-8:** We will be celebrating Cinco de Mayo and will be reading from Chicano literature.
- May 11-21:** *Twilight Seas: The Story of a Blue Whale's Journey* by Sally Carrighar. Published in 1975 by Ballentine Books. The novel's central character is a Blue Whale, and although it is a fanciful account of his thoughts and feelings, it is grounded on Ms. Carrighar's extensive knowledge of the whale and of the sea. Did you know that at birth the Blue Whale weighs 4400 lbs. and the weight of an adult whale's tongue is 3000 pounds? These are just a few of the astonishing facts you will learn when you tune in to *Twilight Seas*. These readings are dedicated to Greenpeace, who have worked so hard to stop whaling on this planet. Read by Ed Markman.
- May 22:** A short reading from *Greek Gods and Heroes: The Palace of the Gods* by Robert Graves. Read by Carleen Jimenez.
- May 25 and 26:** Tony Markam, student at the University of Utah, will read from his own work.
- May 27-29:** More voices of Utah. Short stories by Olive Gheslin. Ms. Gheslin was born in Los Angeles, but has lived in Utah most of her adult life. She taught literature at the University of Utah. She is an acute observer of life. Read by Marilyn Scharine.
- June 1-5:** Stories by and about Kathryn Mansfield. Born in 1888 in Wellington, New Zealand, Mansfield's writing career was spent in London where she died in 1923 at the age of 35. Monday we will hear a story by Francis King, *A Scent of Mimosa*, written about Kathryn Mansfield. The reader is Desiree Mays. Through the rest of the week, we will hear short stories by Kathryn Mansfield read by Constance Denning of the Ethos Theatre Cosmopolitan.
- June 8-10:** Stories by Sarah Orin Jewitt: "Going to Shrewsbury," "The White Heron," and "Miss Tempy's Watchers." Jewitt was born in South Barewick, Maine, September 3, 1849. She died in June 1909. She first published when she was 17 years old, and was very popular for her stories of rural Maine and her wonderfully developed sense of place. Read by Marilyn Scharine.
- June 11 and 12:** Stories by Katherine Anne Porter. Thursday we will hear *The Last Leaf* and *The Jilting of Granny Weatherall*, read by Bruce Thomas. Friday we will hear *Flowering Judas*, read by Carleen Jimenez.
- June 15-19:** The action for James Joyce's epic novel *Ulysses* takes place on one day—June 14. This day is celebrated around the world as Bloom's Day, in honor of one of the main characters. The book was first published in 1922 in the U.S. and was subsequently banned. In 1933, a New York State judge overturned the ban in a famous and far-reaching decision. Quoting from that decision:
"In writing *Ulysses*, Joyce sought to make a serious experiment in a new, if not wholly novel, literary genre. He takes persons of the lower middle class, living in Dublin in 1904 and seeks not only to describe what they did on a certain day early in June of the year as they went about the City bent on their usual occupations, but also to tell what many of them thought about the while.
"The words which are criticized as dirty are old Saxon words known to almost all men and, I venture, to many

women, and are such words as would be naturally and habitually used, I believe, by the types of folk whose life, physical and mental, Joyce is seeking to describe. In respect of the recurrent emergence of the theme of sex in the minds of this characters, it must always be remembered that his locale was Celtic and his season Spring.

"I am quite aware that owing to some of its scenes *Ulysses* is a rather strong draught to ask some sensitive, though normal, persons to take. But my considered opinion, after long reflection, is that whilst in many places the effect of *Ulysses* on the reader undoubtedly is somewhat emetic, nowhere does it tend to be an aphrodisiac.
"*Ulysses* may, therefore, be admitted into the United States."

John M. Woolsey
United States District Judge
December 6, 1933

Performers for this production include: Nancy Borgenicht, David Jones, Yvonne Kirshner, Gerald McDonough and Desiree Mays. Carleen Jimenez will talk with Joycean scholar Karen Lawrence about *Ulysses* and our Bloom's Day celebration, Monday June 15, Our Arts at 12:00 p.m.

June 22-24: Joel Hancock, Department of Languages, University of Utah, will read from the novel, *Platero and I*, by Spanish writer Juan Ramon Jimenez.

June 25 and 26: TBA

June 29 and 30: Short story by Rudyard Kipling, "They," will be read by Mark

READING is produced by Carleen Jimenez and engineered by Roly Pearson.



Dulcimers
Guitars, Lessons
Repairs
Acoustic Music
857 East 11th South
Salt Lake City, Utah 84102
Call (801) 531-7066



Legends
CLOTHING • JEWELRY • OBJECTS OF FANTASY
*Gifts of Myth,
Magic, &
Merriment!*
250 S. 13th E. • S.L.C., Utah

QUIZ
What is a futon?
a. a condiment for soup
b. world's ultimate bed
(answer available
at Sun Futon)



**SUN
FUTON**
2171 SO. ELIZABETH ST.
(So. of Stevens Brown)
466-9373

SHORT FEATURES

Monday	Wilderness Update 7:30 a.m. Sing Out 10:30 a.m. In The Public Interest 11:27 a.m. Byline 3:57 p.m. Sounds of Science 11:30 p.m.	Sounds of Science 3:00 p.m. Byline 3:57 p.m. Southern Utah Wilderness Alliance 4:30 p.m. Latino Voices II 8:30 p.m.
Tuesday	Southern Utah Wilderness Alliance 7:00 a.m. In The Public Interest 11:27 a.m. Sounds of Science 1:55 p.m. Byline 3:57 p.m. Environmental Update 4:30 p.m.	Friday Weekend Entertainment 7:30 a.m. In The Public Interest 11:27 a.m. Youth On The Air 2:00 p.m. Byline 3:57 p.m. Weekend Entertainment 7:30 p.m.
Wednesday	Central America Update 7:30 a.m. In The Public Interest 11:27 a.m. Wilderness Update 1:55 p.m. Byline 3:57 p.m. Women's News 4:30 p.m.	Saturday Environmental Update 11:00 a.m. Weekend Entertainment 12:00 p.m. In The Public Interest 1:00 p.m.
Thursday	Women's News 10:30 a.m. In The Public Interest 11:27 a.m.	Sunday Central America Update 11:00 a.m. In The Public Interest 1:00 p.m. Sounds of Science 4:57 p.m. Stardate airs daily at 8:00 a.m., 5:30 p.m. and 10:00 p.m.



BIG UGLY BOMBS*
*That's exactly what you get when you hand over your earned tax dollars to Uncle Sam on April 15... because you have no personal income tax deductions.
Uncle Sam gets bombs, warships, guns, tanks, whatever he wants. What you get is debatable.
When you own your own home, a considerable amount of your monthly payment is tax deductible as interest expense. I specialize in first-time home buyers, but it's your choice: bombs or bedrooms.

B.A.B.S.D.E.L.A.Y.
a matter as unique as her name!
CARLI & COMPANY 487-3500

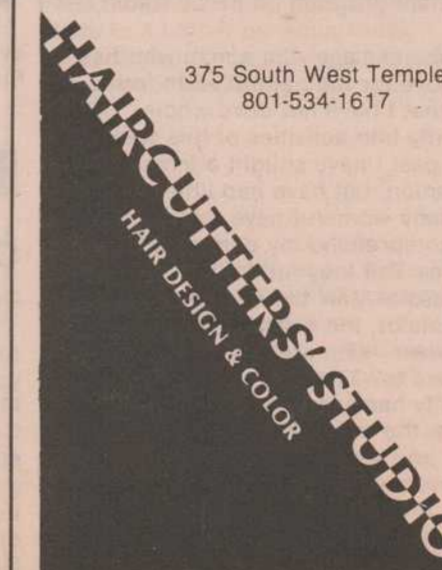
THE RECORD COLLECTOR



LP's • Cassettes • CD's
Posters • T-Shirts

2021 South 1100 East
484-6495

"We buy & sell the Oldies."



375 South West Temple
801-534-1617

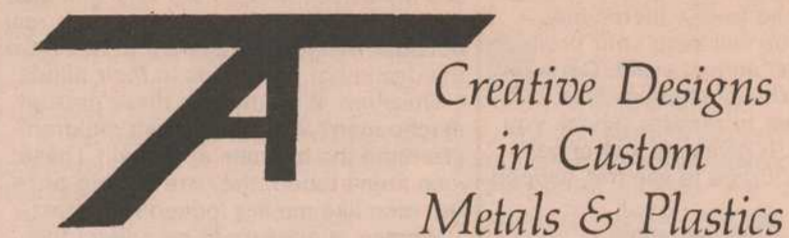


WE DELIVER FREE

In Most Areas
Sugarhouse
486-3748
2150 South 700 East

Holladay
272-9566
4646 Holladay Blvd.

Sandy
566-7300
8700 South 700 East



Creative Designs
in Custom
Metals & Plastics

Displays • Handrails • Roll Bars & Bumpers • Brackets
Plastic Tanks & Containers • Flanges & Fittings



Metal Finishes for
Show or Service
Brass, Chrome, Black
Chrome & Paint.
Plastic Welding &
Bonding

2171 West 2415 South
SLC, UT 84119
(801) 972-5553

Letters

Women Aloud

Dear KRCL,
 Congratulations to you, Maggie Laun, and all the women who prepared the 53 hours of programming "Women Aloud" as part of the International Women's Day celebration. Both the idea and the execution were superb. I hope KRCL will continue to encourage such innovative programming.
 Warm regards,
 Barb E.

To All Those at KRCL,

I would like to thank you very much for your wonderful weekend of women's music and information, March 6-8. It was truly inspirational and added real spirit to the proceedings at the Women's History Conference.
 Sincerely,
 Patty Reagan, Ph.D.
 Director, Women's Studies
 University of Utah

Dear Women,

I am a young, white, American male, and I enjoyed Women Aloud immensely. My only criticism is that you didn't schedule more of the programs I wanted to hear when I was able to hear them. Shame on you!
 I particularly enjoyed the talk by Anne Wilson Schaefer. "Look Me In The Eye" was also excellent. The poetry in "With Hearts On Fire" was incredible, especially the long poem about Africa. I usually cry for something that moving. I was too stunned to cry. Incredible.
 I do hope you will keep your promise to make this an annual event. Certainly you haven't exhausted yourselves; but you have a year to recover. Thank you for doing this. It gives me a strange, undefinable courage to see this happen.
 With love,
 Young, white, American male

Hey KRCL!

I listened to the New Age Children's Show and I liked it! Kids need to learn to listen instead of always watching TV. The show gave a lot of good messages.

Want a new direction
 for your hair?

Ask:
SHARON
 at:
**FOURTH EAST
 STYLE SHOP**
 "The Hair People"
 152 South 400 East
 355-6902 355-5541

Laurie Bernett,

Congratulations on last weekend's programming. Was able to listen to several of the shows, including yours and Cindy's.
 Keep the banner waving!
 Louise Degr
 KSL TV News

To The Women of KRCL,

Please help me, I'm somewhat confused. I feel as though I've been living on a different planet from the one you have described on your women's movement program on KRCL Radio last week.

Let me explain—I'm a man who has a great love for the natural earth to the point that I have not dove wholeheartedly into activities of this society. In the past I have sought a female companion, but have had little success. The many women I have met do not even comprehend my concerns and qualities. But they are looking for the "Successful Man" the consumer, the manipulator, the earth rapin' man. I go downtown—who are the women attracted to? The man who most successfully has benefitted from this culture, the man with this culture's power and wealth.

Where are the women you are talking about, those concerned with right and wrong and goodness, who care for the earth? I would honestly like to know.

Question: Who raises these little boys that become the corrupt men you talk about? My mother is a kind and loving person—for real—and I think she has been a main influence on the way that I see things, for which I am very thankful, even though it has turned me into a real outsider. Women, it appears to me, have the destiny of these kids in their hands.

Question: Who marries these corrupt macho men? Who bears their children? (To mind the ultimate approval.) These men aren't taboo, they are the big prize. But men like me are looked right past.
 Women, it appears to me, direct this world. If they rejected their "bad" men—wouldn't bear their children—then men would change. If women loved ecologists, men would become ecologists.

You (not personally) truly do hold the keys to the future, but have sold it out to the wishes of men who want it all and have gotten it. It's an appalling ride for small minds and the women go for it. I think you bear the burden of the world's problems as much as any man. Let's not divide good and bad across the sex lines.

Perhaps there is another side to women, a narrow-scoped, self-serving side that is truly in control of self. (But I

don't hear anyone talking about this.)

If you KRCL women really are good-hearted people, and it isn't just a case of what you say is different from what you do, you should perhaps have pointed out that you are a real rarity and not representative of the mainstream woman.

Or maybe I do live on another planet from you, or maybe I'm just confused, or maybe you are.
 Thank you,
 Robert B.

KRCL,

Make Women Aloud a semi annual event!
 Monica S.

Controversies on the Air

Dear People at Radio Free Utah,

My wife and I want to thank you for the exceptionally fine radio sounds that you put out. We moved to the Uinta Mtns. about five years ago from California and oddly enough, your station is about the only one that we get. But believe me, it's no loss that we don't get KSL (yuck!) or most of the other stuff that comes out of Salt Lake City or the other environs around here.

We think it is very important to be able to hear such things as the "John Stockwell" programs and we highly commend you for having the courage to broadcast such programs. Please keep it up and don't stop sending out the truth—we desperately need it! When I think of what his asshole Reagan is doing in Central America and other places around the world, I get so disgusted that when I pick up a newspaper and see his picture, I start to swear like a madman!

Thanks again for "Radio Free Utah." And be sure and tell Jerry Schmidt hello. We enjoy his program immensely—it's the greatest!
 Best regards,
 Stephen P.

Dear Program People:

I'm not really a radio listener very much (time constraints as much as anything), but I happened to be listening to you about 9 a.m. this morning and caught a political diatribe called "Consider the Alternatives" (#749—Univ. of Texas) May I comment a moment?

I realize that in America one of our greatest advantages is that we can consider the alternatives. I suppose, too, that my freedom would not be abrogated if your station was strictly socialist, as long as there were other stations allowed to be strictly freedom oriented. It may be that you have a balance and that I have just not heard the Americanism side of your balance. . . . So I'm not fussing that.

Lester Thurow is about as nearly a socialist as he could admit and be culturally accepted in the United States. I've been acquainted with him from before. He is bright and has a charismatic style. The lady from the University I don't know, but she preaches socialism too—as we noted on the program. And then the commentator obviously used these people to weave his story.

I hope you have a balance to the misinformation this program preaches. Somehow, the ideology of these socialists assume the "Star Wars" program is outside the so-called Public Sector; and that Big Brother, government sponsorship and attempts to solve things like housing, health care, birth control (!), hunger, mobility, leisure time pursuits (?), etc., is Public Sector. And nothing could be nearer to backwards. Government involvement does nothing but distort priorities—very much including the resources and methods to provide these so-called social programs.

Everything government ever does is always critically underfunded, isn't it? That ought to give someone a clue. . . . but their utopianism causes chronic myopia.

Government's real limits basically limit it to defense, in the first place—response, not utopia. This group acts as if it is stealing from the mouths of the poor to defend against communists and socialists, and their fellow-travelers. Their whole problem is that they covet the hundreds of billions of dollars to stuff down their socialistic rat holes and tie us ever more tightly into dependence on force of government. After all, to them, socialists and communists are really not such bad guys, and they always try to divorce that from the issue.

Don't let them get away with it!
 Ronald Reagan came into office on the strength of the promise to cut the fat out of the socialism with which the Democrats have increasingly strapped us down over the past five and a half decades. It would have easily paid for defense against communist tyranny. But the Democrat-controlled congress would not, and will not, allow the dismantling of their Big Brother religion. No, the entire condition of

KRCL receives many letters from our listeners. Some sing high praises while others are pointedly critical. Whatever you have to say, we welcome your comments on our programming, the *Program Guide* and the letters in this column. We will run all letters received, though lengthy responses may be edited to fit available space. With the next issue, we will begin printing first and last names with our letters. If you have a reason why your name shouldn't be printed, please note that with your letter. Remember, KRCL is Listeners' Community Radio of Utah. Let us hear from you. Address your comments to KRCL, 208 West 800 South, Salt Lake City, UT 84101.

our country, including all the immoral deficit problem lies squarely in the Liberal camp. They have been in control of government power in all but two short years in the Eisenhower administration since 1930.

All I would be interested in is to be sure there is programming giving Americanism equal time.
 Sincerely,
 Rao P.

Dear KRCL,

Here is my hush money contribution to help keep the station on the air. "Hush Money" is the latest craze in community funded radio/tv and for good reason. Hopefully, this idea will catch on and remain. We would love to not have to endure radiothon!

Now another comment installment: The Women Aloud weekend was very interesting. Hopefully, the issues brought up during that weekend will not fade away, but will remain and provoke some needed change. This is especially true in light of E. "Daf" Benson's latest remarks regarding women's place (in the home?).

I have enjoyed listening to several recent public affairs programs. "Contra-Gate" with John Stockwell is a case-in-point. Jeffrey Montague's "Thinking Out Loud" is another example of an informative quality radio presentation unique to KRCL. Of course, "New Dimensions" and the many other varied "P.A. 91" programs are also informative and interesting.

I encourage you to continue to air programs that do not "gloss" or ignore the unpleasant realities of our modern world. Doing so is certainly controversial, but to gloss and ignore is foolish. KRCL does maintain a balance, while covering a lot of ground, from controversial gore and grime, to humor and good music. That is to say, keep it balanced yet not ordinary.

Regarding doubling the listening audience by 1990, that could be tough. But, it can be done. Ask the listeners, in a manner of speaking, what they want to hear. Be acutely aware of your voice and background noise while on air. Give insight and information, but avoid rambling and being disorganized. (Being a radio listener is like being a blind person. Radio has no visual stimulation, except that of the imagination. A grinding cough or clearing of the throat does horrible things in this listener's imagination.) Above all else, keep being different from the status quo!

Sincerely,
 Matthew W.

Hey all,

Your station is the best idea since sliced bread.

I've lived here one and a half years and have enjoyed your radio station more than any other. I've only been listening to KRCL exclusively since KRCL was sold, but now regret not listening earlier.

Fridays are the days I enjoy the most. Attitude Adjustment, Soul Fusion and Drive Time made staying

in this past winter much easier.

Accept this donation as my repayment for great tunes and Pacifica News.
 Nicholas

Greetings Folks!

Still love your programming. So many good ones to pick from to pledge our small contribution to. Friday morning is made even more pleasant by Chuck's "Attitude Adjustment Session"—his voice being part of the pleasurable experience. But then Donna sure makes Monday morning more palatable. And that's only two times I tune into KRCL. Someday I may even meet some of you.

Hope all is well,
 Peace
 Carol

Dear Folks at KRCL,

It was hell going to school here at the "U" until I found you people on my radio dial. I'm from upstate New York and am used to more variety than you can find on Utah radio.

I appreciate the effort you all go to in order to offer such diversity in your programming. My favorite night is Tuesday, especially "Up All Night" and "Bad Music For Bad People." Though I know being "first to play the hits" isn't your major goal, I love the fact that I can hear the popular Euro-wave on "Up All Night" months before it is commercially acceptable enough to play on the usual stations. I love your public affairs programming and story hours, too.

Thanks for working so hard to keep with the community and on the air. I'll be pledging this radiothon.
 Thanks and good luck,
 Jayne

Dear KRCL,

How dearly I wish you would reduce or eliminate the amount of social commentary and other talking on your station. We get more than enough of it on NPR-KUSU up here. What we need is music.

I especially resent having to listen to talking right when I am finally sitting down to dinner, from 6:30-7:30.

Nexus is by far and away my favorite show. Most of the other music you play is possible to hear from other sources, but the kind of music played on Nexus I have no other way of getting acquainted with. I wish you had more than two hours a week of it. I can't pick up KRCL during the day so I am limited to evening listening. Keep up the good work,
 Lucy

An Alternative Job Well Done

Dear KRCL,
 Please accept this check as payment

toward my Radiothon pledge. Sorry it is late, but my finances have been tight. Unfortunately, I put my pledge to KRCL on a low priority, which I realize now as a grave mistake. How could I have put you on hold for so long? Please accept my apology.

KRCL means a great deal to me, and frankly I don't think I would be here in Utah without you. I say to myself "If I leave Utah, will life exist as I now know it?" The answer is yes, life goes on, but the quality is somewhat less without the alternative sounds of KRCL. I listen religiously and attend most benefits. You have broadened my musical horizons and opened new doors to a higher consciousness.

Thank you for improving the quality of existence in Utah?
 Daniel

KRCL,

What a relief it is to know there is a place on the radio dial that you can tune to and really enjoy!

You all do a great job, and it's much appreciated.
 Thanks,
 Adus

Dear Friends,

I have heard a rumor twice on the air that you are planning to eliminate heavy metal as one of the station's formats. This disturbs me partly because I have supported KRCL (\$100 within the past two Radiothons), and also because the variety of different formats are what motivate me to keep giving my support. I very much enjoy all different types of music on KRCL, but if you take away heavy metal, you take away a type of music that many listeners enjoy.

Remember—KRCL is "listener supported." One of the DJs suggested that you heard Iron Maiden's "Number of the Beast" and were upset.

Well, before you call a priest, I ask that you look at a lyrics sheet by Iron Maiden—records 1982 and on—in the station; they should have the words printed on the inner sleeve, including "Number of the Beast." You will see that it is very well written poetry, and to the heavy metal connoisseur, the musicianship on these records is astounding. Much classical poetry deals with similar themes. Perhaps it is the violent images that some of these artists portray that upsets you. Again, similar violent themes are portrayed in classical literature and poetry.

Well, your New Wave and Punk shows have music that talks about sex and the DJs tell dirty sex jokes. Isn't this just as "evil"? But I don't want you to eliminate anything from KRCL.

I was on my way to donate my usual \$50 only this time I was going to do the hush money thing to shorten Radiothon. Well, I'll wait and see what happens.

Please don't banish heavy metal from KRCL. It's the station most worth listening to.
 Sincerely yours,
 Maurice G.

Programs Worth Listening To

Hi Jim (Bilagody),
 You make my day. I try not to miss a show or program of yours or Donna's (Living the Circle of Life). When I'm working I support KRCL.

Have a nice day.
 One of your listeners,
 Marion F.

Dear KRCL,

As a one-time contributor to (and mug holder from) your station, let me please cast my vote for your having, if possible, the "inside Nicaragua" series on your station. I am also a fan of Utah Slavia whenever I am up late enough to hear it.
 Sincerely,
 Walter

KRCL,

I LOVE This Feminine Position. Keep up the good work Laurie and Cindy!

I would also like to hear more of "The Other America's Radio" (Contra-Gate, The Secret Wars of the CIA)—I hope you're planning more of it in the future.

This is without a doubt (to me) the best thing on the dial (KRCL) in Utah. Here's to a long and happy future. Congratulations KRCL!

Thanks for letting me know I'm not alone!
 Bobbi

KRCL,

Good programming!
 Hauling Nevada crude oil into SLC refineries; lose you across White Horse Pass—half an hour out of Wendover. More watts, clear channel.

Tired of bleeding women and blacks. Air PBS Morning Addition and Pacifica News more often. Why does the Native American music host play the fool? A shame. Five minutes of Reggae is plenty. Classical also. More old country cowboy music. More bluegrass!

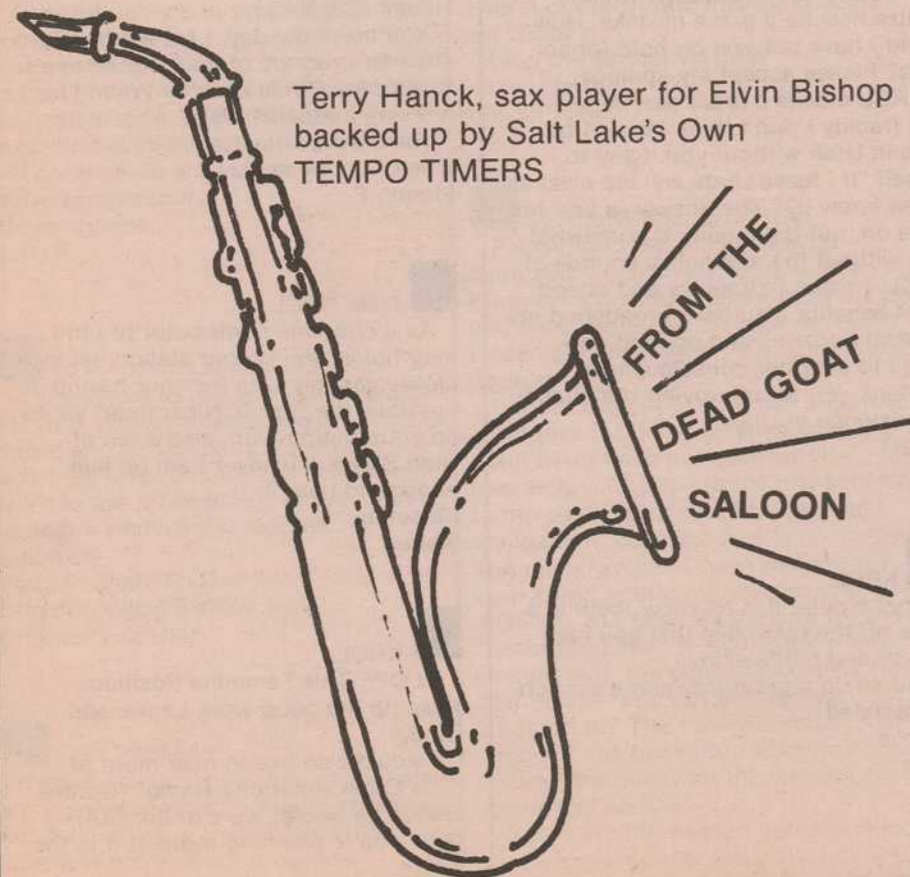
And favorite programs: Mission Impossible, Bad Music for Bad People, No Guarantee, Broken Mirrors, Generic Radio, Sagebrush Serenade. Really appreciate you folks!

Wish I could bring you in throughout the Great Basin. Also would like to bring you in home here in Ely. More power for wisdom.



LIVE
ON KRCL

TERRY HANCK



Terry Hanck, sax player for Elvin Bishop backed up by Salt Lake's Own TEMPO TIMERS

MONDAY MAY 18th AT 9:30 P.M.



ATOMIC LANES

BOOM TOWN

The History of the Hanford Nuclear Reservation... where the world's first atomic bomb was made.

- June 3: "The Birth of the Bomb."
- June 10: "Bombs and Butter."
- June 17: "Swords and Plowshares?"
- June 24: "Good Fences Make Good Neighbors."

Produced by Michael O'Rourke, KBOO, Portland, Oregon.

Project sponsored by:
Oregon Committee for the Humanities
Washington Commission for the Humanities
National Public Radio—SPDF
C.S. Fund
Agape Foundation

KRCL, Wednesday's at 7:00 p.m.

Thanks to our underwriters

Underwriting a show, a public affairs program or a short feature is a way for business to provide financial support for KRCL. Because KRCL is non-commercial, the monies donated are tax deductible. In exchange for the donation, KRCL broadcasts a brief message which is descriptive in nature and non-promotional. The message is a means for KRCL to recognize this valuable contribution.

Underwriting is an extremely important layer of financial support for the station. Approximately 15 percent of the current budget is derived from underwriting. The goal is to raise that level to 25 percent.

If you are interested in underwriting a program, please call 363-1818 during working hours and a packet of information will be sent to you. If you are a listener, please support our underwriters.

Acoustic Music

857 East 400 South
Salt Lake City

Avenues Markets & Cafes

1026 2nd Avenue
and
898 South 900 East
Salt Lake City

Cabin Fever

66 West 400 South
Salt Lake City

Historic Main Street
and
Main Street Marketplace
Park City

The Carpet Barn

3725 So. Redwood Road
Salt Lake City

Catalyst

140 South McClelland
Salt Lake City

Corporation for Public Broadcasting

Washington, D.C.

Cosmic Aeroplane

258 East 100 South
Salt Lake City

Cover Agency

660 South 200 East
Salt Lake City

Dead Goat Saloon

165 South West Temple
Salt Lake City

Domus

430 East South Temple
Salt Lake City

Foothill Oriental Rugs

1464 Foothill Drive
Salt Lake City

Gardiner Distributing

554 West 100 South
Salt Lake City

Great Harvest Bread Company

4657 South 2300 East
Salt Lake City

Gypsy Moon Emporium

1649 South 1100 East
Salt Lake City

Intermountain Booksellers Assn.

Salt Lake City

Intermountain Guitar and Banjo

712 East 100 South
Salt Lake City

Legends

250 South 1300 East
Salt Lake City

Mt. Olympus Waters, Inc.

1825 South 3730 West
Salt Lake City

Performance Audio

2358 South Main
Salt Lake City

Phillips Gallery

444 East 2nd South
Salt Lake City

Rio Grande Cafe

270 South 455 West
Salt Lake City

Salt Lake Roasting Co.

249 East 400 South
Salt Lake City

Smokey's Records

1515 South 1500 East
Salt Lake City

Sun Futon

2171 Elizabeth St.
Salt Lake City

TyAut Design and Fabrication

2171 West 2415 South
West Valley City

Utah Endowment for the Humanities

10 West Broadway
Salt Lake City

Utah Museum of Natural History

University of Utah
Salt Lake City

Wasatch Touring

702 East 100 South
Salt Lake City

Wasatch Touring

702 East 100 South
Salt Lake City

RIO GRANDE CAFE
A FINE MEXICAN CAFE
RIO GRANDE TRAIN STATION
455 W. 300 SO.

Great Harvest Bread Co.

4657 South 2300 East
Salt Lake City, Utah
877-3277

iNS & OOTS

Volunteer activities at a glance.....

Spring is finally here, and with it, spring fever. This is the season for hacky sack, barbecues, golf and hayfever. It's also the season many people move on to other places. For some that destination is Utah (and maybe we'll see some of their faces here at KRCL). For others, the destination takes them from the KRCL community.



Further On Up The Road

June 4 will be **Bruce Saffran's** last day as host of Thursday Drive Time. His medical studies will take him to Cincinnati, Ohio. June 30 is the last time you'll hear **Shauna Jones** on Bad Music For Bad People. Shauna has graduated from the "U" and is on her way to Seattle, Washington.

Isn't She Lovely?

Congratulations to **Deborah Levine** and Sam Sampson on the birth of their daughter, Amanda Laurel.

Going To The Chapel

Congratulations to **John Van Den Bergh**, co-host of Radio Libre on his marriage.

Thank You For Being A Friend

Many thanks to **Charles Hamilton** for his machine work to revive a cart machine, to **John Wanggaard** for carpentry and formica work on the soon-to-be-ready porta-studio, and **Myron Fairbanks, Bill Komlos** and **Robert Velasquez** for contributing to our new snake box, used at KRCL's live broadcasts. Also many thanks to the supporters of KRCL who contributed so generously during our Spring Radiothon!

WHITE CLOUD

Metaphysical Books and Accessories

NANCY HAAS—
COLLEEN (COCO) SALTZGIVER

32 North Main
Midvale, Utah 84047

Phone
562-1626



New Age & Magickal

Books ★ Tapes
Supplies
1649 So. 1100 East
484-4400

Domus.

New Age Music
Futons
International Gifts

430 East South Temple
355-5052
Mon. - Sat. 10 - 6



guitars mandolins fiddles books, kits banjos hand-made instruments accessories
Master Craftsmen
712 EAST FIRST SOUTH, SALT LAKE CITY, UT 84102
Rentals Lessons
(801) 322-4682
10 AM-6 PM, MONDAY thru SATURDAY

1987 BICYCLES

FAT CHANCE MOUNTAIN BIKES

Handbuilt in the USA, the Fat Chance features uncompromised performance. Beautifully constructed, it is the bike of choice for many of Utah's elite mountain riders.

1987 Models:	Fat Chance	\$999 ⁰⁰
	Wicked Fat Chance	\$1299 ⁰⁰
	Team Comp	\$1999 ⁰⁰

MARIN MOUNTAIN BIKES

Designed by two time National Mountain Bike Champion Joe Murray, Marin offers a complete line of bikes that are exceptional values. We are proud to be Utah's exclusive dealer for this exciting new product.

1987 Models:	Team Marin	\$1199 ⁰⁰
	Eldridge Grade	\$599 ⁰⁰
	Bear Valley	\$399 ⁰⁰
	Pailisades Trail	\$339 ⁰⁰

TERRY BICYCLES FOR WOMEN

The Terry is one of the most elegantly innovative bicycle products of the eighties. Acknowledging the anatomical distinctions of women, designer Georgena Terry has created a machine especially for them. Frame design and component selection are specifically tailored to the needs of the woman cyclist.

1987 Models:	Crescendo	\$1299 ⁰⁰
	Precision	\$839 ⁰⁰
	Despatch	\$539 ⁰⁰

WILDROSE MOUNTAINEERING

474 THIRD AVENUE, SALT LAKE CITY, UT 84103
533-8671

SUPPORT *The Alternative*

All Contributions are Tax-Deductible

Name _____

Address _____

City _____ State _____ Zip _____

Telephone _____

MEMBERSHIP DUES (ANNUAL)

- \$15—Low-Income, Student, Elderly
- \$20—Supporting (regular)
- \$35—Supporting Plus KRCL T-Shirt!
- \$50—Sustaining
(May be paid \$10/month) Plus KRCL T-Shirt!

Mall to:

- \$100 (or more)—Patron (May be paid \$25/month) Plus KRCL T-Shirt!

- New Subscription
- Renewal/Addition

T-Shirt Size S, M, L, XL



Listener's Community Radio of Utah
208 WEST 800 SOUTH
SALT LAKE CITY, UTAH 84101
TELEPHONE 801-363-1818