

KRCL Volunteers, Board, Staff

KRCL Volunteers

Eric Anderson, Mike Anderson, Rob Baker, Paul Banham, Brad Barker, Brian Barkey, Barbara Barnes, Chuck Bradley, Deena Brazy, Dan Benaducci, Thu Bo, Ann Bolland, Bill Boyd, Jon Bray, Scott Bringard, Mark Cantor, Rebecca Chavez-Houk, Mike Christy, Jonathan Cloud, Travis Coates, Brad Collins, Steve Connor, Ken Cursoe, Babs DeLay, Carol Dixon, Marvin Dixon, Kim Duffin, David Dyer, Jim Elder, Victor Fernandez, Larry Ficks, Nancy Fillat, Bob Flinner, Matt Flinner, Doc Floor, Tammi Fraser, Martin Gaspar, Stu Goldman, Martin Gonzales, Barb Guy, Jimmy Hamamoto, Ema Harrah, Dave Hein, Mike Hill, Marc Hoenig, Erik Holdaway, Scott Howard, Dung Hoang, Mic Huerta, Mark C. Jackman, Carlie Jimenez, Glenn Keister, Brian Kelm, Jeff Kimball, Paul Kohl, Bill Komlos, Marlene Lambert, Phil Lanouette, Isaiah Lee, Deborah Levine, Julie Lueders, Abby Maestes, Lisa Mace, Lynne McCue-Hamilton, Johnson Megwalu, Erick Meyers, Kristina Miller, Craig Miller, Maureen Mooney, Joseph Mortalla, Becky Moss, Robert Nelson, Doug Parkin, Roland Pearson, Tony Polychronis, Dwight Ramus, Linda Reeder, John Reese, Nini Rich, Kay Robinson, Chris Rohrer, John Rokich, Deborah Rosenberg, Ellen St. George, Dave Santivasi, Marilyn Scharine, Richard Scharine, John Schellinger, Jerry Schmidt, Steve Seftel, Cathy Segal, Ellen Selu, Wayne Selu, Sally Shaum, Pery Shepard, John Shilaos, Myron Simon, Mary & Robin Simper, Sam Smith, Victoria Smith, Becky Sobel, Rick Stayner, Ken Sullivan, Danny Tapeta, Bruce Thomas, Chris Thompson, Gary Timm, Clark Timmons, JR Torina, Jane Torrance, June Turnbull, David Turner, Joel Uluakiola, Kevin Van-Mondfrans, Pouwel Veenstra, Robert Velasquez, Matthew Wallace, Bob Walter, Beth Weech, Susan Wesenberg, Ben Williams, Jo Wilson, Truman Wold, Darrell Young, Zhandong Zhong

KRCL Staff

David Young,
General Manager
Donna Land Maldonado,
Program Director
Lewis Downey,
Chief Engineer
Sandi Terry,
Development Director
Ken Pavia,
Music Director
Paula Rokich,
Business Manager
Tristin Tabish
Administrative Assistant

KRCL Community Advisory Committee

Tim Dolan
Georgia Johnson
JoAnn Wong Kilpatrick
Debbie Rocha
Nap Hagood

Board of Trustees

KRCL's Board meetings are open to the public. The Board meets on the second Thursday of odd-numbered months.

Howard Lundgren, Chair
Kathryn Kendall, Vice Chair
Maggie Laun, Treasurer
Hugh Heinsohn, Secretary
Steve Connor,
Volunteer Representative
Jimmy Hamamoto,
Volunteer Representative
Marc Hoenig,
Volunteer Representative
Stephen Erickson, Board Member
Stephen Holbrook, Board Member
Maria Garcia, Board Member
Frances Pruy, Board Member
Paul Wharton, Board Member
Joseph Sanders, Board Member
Letitia Archuleta, Board Member
Robert Flores, Board Member

Program Guide Staff

Bruce Thomas, Sandi Terry,
Matthew Sorenson, Ken Pavia
Editors
Jerry Schmidt, Michelle Entwistle,
Advertising Representatives

Community Radio Listens to its Listeners

This issue of the program guide is dominated by a variety of letters from listeners. KRCL 91FM is dedicated to providing alternative voices, and has always bent over backwards to encourage a dialog within our community. This month, following a Radiothon in which a record amount of financial support was pledged to the station by loyal members, new and old, KRCL received a bunch of letters that we are publishing here.

All listeners, with all sorts of views, are encouraged to express them in writing to the station. A new comment phone line (570-KRCL) is also available for letting us know what you think.

Letters to the Editor

Dear KRCL,
On Tuesday, September 24, my car's tire blew out and Leila helped to change it. Actually, she did all the work. She would not take any money from me, but she said I could donate it to KRCL. So here's \$10.
M.N.

Dear KRCL,
We appreciate the bluegrass music. Prefer the instrumental.
Lowell Stevens

Dear KRCL,
I really enjoy your show "Brave New World!!!" Anyway, I was listening to your "Audio Perspectives" show which is also very good. Love you, Kristina. Anyway, I understand that we can have a twelve month period to pay our pledge. Enclosed is my pledge.

I'd love to pay more, but you know I'm a poor little rascal. Yet if we have twelve months to pay, I'll gladly pledge more because I totally love Brave New World and Audio Perspectives and hope I can continue to listen to them. Thanks much.

One of your listeners,
Keith Benson

Dear Pet Sounds Paul,
There are some great shows on KRCL, but none better than yours. I have been getting up at 3:30 every Friday and listening to your show on headphones. I have a request for some Wilson Pickett during the soul half-hour. I'd like to hear "Don't Let the Green Grass Fool You" or "Engine #9."

Keep up the great music, and I'll keep falling asleep at work every Friday.

I wish I could afford a bigger pledge, but they don't pay us much out here.

Your loyal fan,
Bill Lowe

Dear KRCL,
I want to thank you for your community radio. The Radiothon was wonderful, hearing the people behind the scenes talking was like having friends in my house all week long. This radio station means a lot to me because I feel I do have a community I can be a part of.

Living in Provo is one of the hardest places for me to be because there just isn't anything (except perhaps Atticus Bookstore) that makes me feel a part of an alternative community. You have kept windows open in my life until I can find the door to open to move on. Thank-you again.

I enjoy Babs's program, your Sunday shows, and the blues night.
Take care,
Patricia

Dear KRCL,
I recently attended your Steel Pulse concert and am sorry to say that it was entirely disappointing. I haven't lost faith in your promotions because that is the first concert of yours I have gone to that was disappointing. Still, I felt it was my duty to write after spending \$16 for a ticket. Of course, I realize there were uncontrollable factors involved, namely the weather. Still I felt things could have been handled better. Your DJ said over and over the concert would start "rain or shine" at 8:00 p.m. Two hours later, and still no go. When it did start there was no sound for Swim Herschel Swim. Then Dread Zeppelin came on, who in my opinion is the dreg band of society. After Dread Zeppelin members were hit by flying debris (which seemed to be the only way to get them off the stage) one proceeded to moon the audience while others made comments such as "you've got to be intelligent to listen to Dread Zeppelin music."

Letters...Letters...Letters...Letters...Letters...Letters...Letters...Letters...Letters...

Even though Dread Zeppelin isn't my style, they are good musicians and deserve credit. But promoting Dread Zeppelin with Steel Pulse is like promoting Metallica with The Grateful Dead.

When people come to hear reggae, they want a reggae show, not a clown show. These things alone were bad enough, and many people were already walking out when Steel Pulse finally did come on at almost 1:00 a.m. It was worth the \$16 to see Steel Pulse for 45 minutes (half as long as Dread Zeppelin played) but even Steel Pulse couldn't save an already hopeless show.

I hope in the future you will earn the money that I fork out to see a good show. I don't feel you did in the case of Steel Pulse. However, I'm not going to let one bad apple spoil the barrel. You people have put on many excellent shows in the past and I know you will in the future.
(unsigned)

Dear Unsigned,
We agree that it was a bummer of a show. But just so people that weren't there don't misunderstand and to set the record straight, according to our watch, Dread Zeppelin played for 45

minutes, ending around midnight. Steel Pulse played for 60 minutes, starting at 12:25 and ending at 1:25, when David Hinds, the leader of the band, called the show himself.—ed.

To all of KRCL,
Recently, I received my Sept./Oct. 1991 program guide. Something on the front page hit me hard. There it simply said "Preserve Your Radio Freedom." I looked down at my toes and jotted down some thoughts about "preserving" KRCL. The spilling ideas kind of took poetry form. So maybe it's a poem. Maybe just thought. But it is exactly how I feel about KRCL, and about contributing.

I donated a year or so ago, and it is time again. My income doesn't allow me to send much more, but hey, at least it's the "casting of an idea and drafting of support," that counts. But other contributing pushed envelopes will follow.

Also, I heard the other day on Aural Decay that Barb Guy, who hosted Generic Radio, is off to be "better and bigger things," which would be hard! How can you better the best? After ten full years of helping KRCL become what it is

today! A warm good-lucking to you, Barb! Thank you for all your great shows. You will be missed.

And to all of KRCL, an all around clapping and standing ovation to you. This poem/dripped thought write I dedicate to you with love. A good hairline must be achieved some how! Keep up the great work. I love you.

"Preserve Your Radio Freedom"
Other polluted radio stations
Still can't see
That what they're playing
Doesn't satisfy we!
A cup of coffee, some paints and my
Dial set to 91 FM
Keeps my day fully developed
And closets up the dull drums.
Educating us of important issues,
Helping us know our rights
Volunteers giving of their time,
Playing groovy sounds from the elect.
But some still don't give it any mind.
That they're radio freedoms
Will soon be graved!
—We'll be tuning into static,
Instead of present day
embryonic ideas and music.
Preserve your Radio freedom!
It can be easy.
Just cast an idea,
Draft up some support,
And contribute to your alternative station;
KRCL 91 FM
Becky Allison

Dear Rick Stayner,
The Program Guide says you like fishing songs. John D. Loudermilk has a great one on an album I have at home. The song, I think, is called "Google Eye." It's about a catfish. I think the album is just called John D. Loudermilk, but I could be wrong. The album also contains "Tobacco Road," "Nine At The Time," and "I Want To Live." I hope you can find it.

I love the Sunday Sagebrush Serenade, although I can usually only listen until noon.

I'd sure like to hear some Butch Hancock on your show sometime. Anything off of "The Wind's Dominion" or either of the live albums would be great. My favorite music is folk music from Texas, and you seem to play a lot of it.

Keep up the good music,
Bill Lowe

Dear Hopi Dude and White Mountain Boy,

I love the things you play. My Great-grandmother was full blood Cherokee from N.C. I also am blue blood of Scotland through my Campbell ancestry. I treasure both but I am blessed by my Indian blood. I truly believe Indians are the healers and binders of the world. Eventually when things come full circle—we see it comes back to the ancient way.

When I meet young Indians and their ways, they mostly reject any of the old teachings due largely to impoverished conditions of the reservations. I try to talk to them and tell them they should be proud of their heritage for they are truly unique. It's like saying things to a vacuum or a rubber wall, but I try anyway. I appreciate your music both old and new. I value the ancient chants for it brings me wisdom that would otherwise be lost but for those younger ones into rock and stuff, I appreciate the newer plays also. I send you peace of the sacred tribes and pray for world-wide understanding.
Dee Hamaker

Dear Person at KRCL,
I want to write letters to try to make some better changes in the world. Could you please send me addresses and information. For example, I heard a commercial once on your station talking about "Writing to Stop Nuclear Testing." Anything like that.
I am enclosing a check in part for the trouble but mostly for the

THANK YOU
TO THE LISTENERS OF
**KRCL
91FM**
FOR THE BEST FUND
DRIVE EVER.

Saturday Nights
on KRCL 91FM
Phonosynthesis
signals from the
shadow pools
**BEHIND THE
ZION CURTAIN**
Sonic Slaughterhouse

Got an
opinion?
KRCL 91fm
has a new phone line
for recording
comments
from listeners like
YOU.
Call
363-KRCL

Salt Mountain
Master Craftsmen
712 EAST FIRST SOUTH, SALT LAKE CITY, UT 84102
(801) 322-4682
10 AM - 6 PM, MONDAY thru SATURDAY

guitars
mandolins
fiddles
books, kits

banjos
hand-made
instruments
accessories

Rentals
Lessons

T P Gallery
SPECIALIZING IN INDIAN ART
252 South Main
Salt Lake City
364-2961

Letters...Letters...Letters...Letters...

great music you play. You are public, aren't you? I hope so!

Thanks,
Nick Peterson
P.S. Please keep on playing the blues, bluegrass, and reggae.

Dear Ken Pavia,
Enclosed, please find the tape I am sending you in hope that you will play it on your radio station. I am an independent artist, and the music on the tape is basically "Space/Electronic" music. In the event that you play some of this music on your station, you may wish to tell your listeners that they can obtain a free copy of this tape, simply by sending me a letter to the P.O. address which is on the tape. I have released this tape, more for promotional purposes than any other.

Thank you for giving the music a listen and considering my request.

Sincerely,
Robert Carty
P.O. Box 45051
Kansas City, MO 64111
P.S. I received your name and address from Heartsong Review.

Dear KRCL,
I am writing to your station because it has changed my life for the good.

Your station has inspired me to go out and do the things I want to get out of life.

It's like a reminder of "taking people around you for who they are." That has helped me to have more friends and a happier life. It has showed me you always can be different from other people.

I'd say your radio station was #1 in Salt Lake City. I especially like Reading, the blues & jazz, and the reggae. There is also a person who used to work there that showed me these things, too. His name is John Reese.

Thanks for all you've done!
Your friend and listener,
Jennie Forbush
P.S. John is a good friend of mine.

Dear KRCL,
My favorite programs are: Tuesday Global Gumbo (the best!), God's Zoo, Living the Circle of Life, Asian Chimes, Brave New World, Nuclear Nightmares, ...and of course, Pacifica News, Stardate, New Dimensions.

During the Gulf War and the majority pro-war hype I am glad KRCL provided those against it all coverage of the anti-war rallies and protests. Shame to all those who sought to shut KRCL up. Out with the reactionaries!
Steven Paul Martinez

Dear KRCL,
Enclosed is my spring contribution, a bit late, but I feel it's important any time to contribute to this wonderful, alternative radio station. KRCL is performing an important service and I'm very grateful for a place on the dial where I can hear a point of view that differs from what the mass media offers. I miss you.

I especially want to thank Donna Land for her show, Le Café Folk, which is my favorite. Thanks also for airing Pacifica News and Central America Update, both very informative alternative news sources.

Keep up the great work,
Martie Lewis

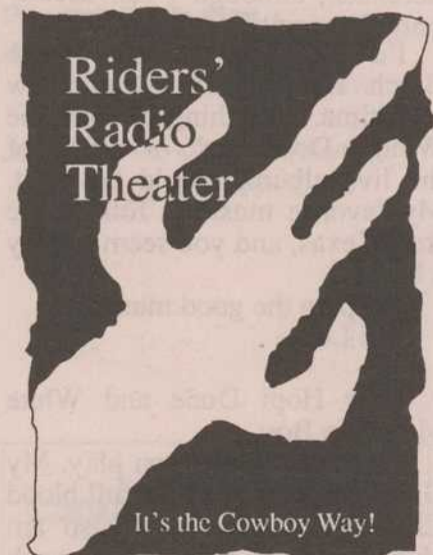
Dear Friends,
Please accept my apology for such a long delay in writing a thank-you. Mysterious packages of personal care items appeared in our Food Bank, but no one informed me of the giver until a week ago.

We do thank you so much for your efforts on our clients' behalf.

We continue to need personal care items with a special emphasis on shaving cream, hand and body lotion and shampoos.

Should you have any questions or concerns please call the UAF and leave a message for me.

With great thanks,
Bente J. Trapp
Food Bank Coordinator
Utah AIDS Foundation



brought to you by
Bakers C&C
doing business
THE COWBOY WAY!

Bound by the Wind

A powerful new forty minute documentary on the global impact of nuclear weapons testing. Bound by the Wind examines arguments from experts, activists and governmental officials both supporting and opposing a comprehensive ban on nuclear testing. The testing debate is interwoven with moving testimony from several "downwinders" from Utah, the Soviet Union, the South Pacific, who have been directly affected by nuclear testing.

"Much more than an excellent documentary on nuclear testing. It is a spirited manifesto delivered by citizens around the world who are standing their ground in the places they love peacefully and forcefully to bring an end to nuclear testing for all time."

—Terry Tempest Williams.

Wednesday, November 13, 1991, 7:30 PM

The Fine Arts Auditorium

University of Utah

Admission \$4 at the door

Co-Sponsored by the Utah Media Center and KRCL
Community Radio. Information: 801-581-8501



Volunteer Spotlight

Pouwel Veenstra Kept KRCL Sounding Good

This month's volunteer spotlight focuses on Pouwel Veenstra, on- and off-air volunteer, who is moving to Austin, Texas in October, 1991. KRCL bids farewell and wishes good luck to Pouwel and Jan Veenstra in their move to Austin.

Pouwel has been a volunteer at KRCL for five years. He has worked in many capacities. For one, he has been waking up very early Wednesday mornings for the past four years to be the on-air programmer for a show entitled Electric Music With a Positive Charge, 3:30-6:00 am.

Before being on the air,

broadcasts from the Dead Goat Saloon in Arrow Press Square. His hard work, diligence, and attention to audio detail that has made those live broadcasts sparkle will be sorely missed.

Pouwel has been involved in almost every live remote broadcast that KRCL has done, using his expertise and wisdom to transport, assemble, and monitor the sound and equipment, making sure everything is working properly and sounding as good as possible.

He has worked on the Gospel concert at Salt Lake Community College, the nerve gas



though, he got his start at KRCL in audio mixing with the live broadcast Desertaire series. It all came about because he happened to know a person in Desertaire, Steve Rasmussen. While they were getting ready for a production, Pouwel started helping Lewis Downey, KRCL's chief engineer to set up the equipment. Lewis then asked him if he would mix the sound for the show. Pouwel agreed, and then Lewis asked him if he would keep coming back.

Pouwel has kept coming back and up until now has been THE on-location audio director for KRCL at the Blue Devil's Blues Review live

hearings, Day in the Park, Living Traditions, and many more.

Pouwel has also volunteered for other organizations, including the Slavic Festival, Zivio Ethnic Arts Dance Ensemble, and the Red Butte Garden Concert Series.

Pouwel has also recently risen to the challenge of live broadcast audio mixing of heavy metal bands on the Dyer's Eve program from the fifteen foot by eighteen foot sound studio in the KRCL studios. The drum kits take up half the room, and the bands play it LOUD, making it even more of a challenge to get a good on-air sound quality.

The countless hours spent in setup, sound check, broadcast, and tear down time involved in all these live broadcasts has come from Pouwel's dedication to KRCL and a serious interest in his craft.

Pouwel says that his association with KRCL has been the "best experience in my life so far. I've had a great time."

We wish him good opportunities and success in his career in audio engineering. He has set standards at KRCL that somehow we are going to have to live up to.



KRCL Gains A New Staff Member

If you drop in at the KRCL studios to pay a pledge (hint hint), pick up a premium, or just to check the place out, and you see an unfamiliar, smiling face, it may be our new part-time Administrative Assistant, Tristin Tabish.

Tristin will be the liaison for all KRCL members, making sure that records are accurate and that program guides are distributed to members.

Tristin recently graduated from Cyprus High School, where her interests included Art History, Journalism, and American Institutions. In her spare time, she enjoys hiking, photography, reading Jack Kerouac novels, drawing, and listening to her favorite radio station, and yours, KRCL. She particularly likes Tuesday, Wednesday, and Saturday nights.

Tristin says, "I believe in KRCL for the diversity it offers to our community and am very excited to become just one of the many driving forces behind it. I hope to contribute a part of me through my job at KRCL. I have already met a lot of great people, and I hope to put all of these members names to faces and meet many more. See you soon!"



ELEMENTE

Visit our showroom and experience the endless possibilities of used and consigned furnishings.



353 West Pierpont (250 S.) Salt Lake City, Utah (801) 355-7400
Open Mon. thru Sat - 10:00 a.m. to 6:00 p.m.

Push the Panic Button!

COSMIC CATASTROPHES

You control the fate of Planet Earth in Utah's first push-button science adventure!

HANSEN PLANETARIUM
15 South State 538-2104

CATALYST

140 S. McClelland
Salt Lake City, Utah 84102
Call: 363-1505

NEW FRONTIERS MARKET & CAFE

1026 2ND AVE. SLC UT 84103
355-7401
2454 SO. 7TH E. SLC UT 84106
359-7913

FOOTHILL ORIENTAL RUGS

1464 Foothill Drive
Salt Lake City, Utah 84108
(801) 582-3500

WASATCH TOURING MOUNTAIN TRAVEL SPECIALISTS



702 E. 100 S., SLC / 359-9361

THE Salt Lake Roasting Co. & Cafe



320 East 400 South Salt Lake City

Happy Birthday 12 years

3 Dec 1991
Listener-sponsored
Community Radio
for Utah

DEAD GOAT SALOON

A ROCKIN' LIL' ROADHOUSE

BEER • LIVE MUSIC • POOL • FOOD
188 SOUTH WEST TEMPLE • PHONE 328-GOAT

KRCL 91FM

Mount Olympus Spring Water

1825 So. 3730 W.
Salt Lake City

US Voice Mail

A completely private messaging system that makes you available 24 hours a day

FOR A FREE 10-DAY TRIAL CALL
350-2049
450 S. 900 E. #110, SLC, UT

CHASE GALLERY & ESPRESSO BAR

Summer Hours: Tu-Fr 12-4 Sat 2-5
260 South 200 West
mention this ad for free espresso

SUNRISE Press

COLOR Copies \$1.50!

Also Available:

Four Color Printing	Embossing
Typesetting	Camera Reproductions
Binding	Rubber Stamps
Padding	Fax Service
Laminating	Personalized Service
NCR Forms	Free Pick Up & Delivery

Quick & Quality Printing At Competitive Prices

484-3429 Fax: 484-1681

252 West 1300 South Parking In Rear

To whom it may concern at KRCL, 91FM

I have been on the horns of a dilemma for the last few weeks. I am a long time listener and supporter of KRCL. I enjoy your programming, especially the Sunday shows. I find them relaxing and in tune with my Sunday mood. However, recently I have noticed a trend toward racism and sexism on the Circle of Life. I hear the phrase "white man" coming up more and more in what I perceive to be a derogatory way. I do not deny that the "human race" is capable of terrible injustices.

I do not deny that the Native Americans of the 19th and 20th centuries have suffered at the hands of the U.S. Government. I do not deny that women have not always received a fair shake. Great strides have been made in the last half of this century to correct some of these injustices. But changes are not made overnight. It takes time and hard work by all types of people of all colors and genders. Finger pointing, while attracting attention, does little good in rectifying the problem. I suggest we all step back and examine our goals. Do we want to beat a dead horse, or solve some problems?

I have decided to withhold my contribution for this year. I hope this small protest is not in vain. I feel your station is performing a valuable service to our community, and my decision leaves me the saddest of all. But I believe its the right thing to do. Sexism and Racism in any form are despicable.

Brent Horrocks

On Stereotypes and Problem Solving

KRCL is mandated to provide a voice for those groups in society who do not have access to the mainstream media. Included in those groups are "non-whites," Native Americans, and women. Living the Circle of Life is a program directed at the Native American listeners, and those who enjoy hearing Native American music and views. The program has been controversial, but has many enthusiastic listeners.

Individuals on KRCL may make statements that appear offensive to those who are not part of these alternative groups, just as we find statements in the mainstream media that are offensive to those who do not share the traditional views that have dominated the airwaves and newspapers.

"Reverse" racism or sexism is an issue worth talking about, but listeners should remember that the opinions you hear on a program that is aired by KRCL 91FM are the opinions of the speaker, not those of KRCL. The station exists to provide a way for more voices to be heard.

Georgia Johnson replies:
Dear Mr. Horrocks:
I would like to reply to your letter of 9/15 in which you expressed a concern that comments and interviews you had heard on KRCL especially on the Circle of Life Program were coming out of a "finger pointing" attitude rather than an attitude of "problem solving." I was interviewed on the show you mention the week before you wrote your letter. The subject Donna Land and I discussed was "How are Native Americans portrayed in children's books." At that time I argued that most books written about Indian people or practices are written by white people, illustrated by white artists and published by white publishing companies. For those of us who work with young readers from all cultures and backgrounds, the dominance of one

perspective in books about and for readers from different backgrounds, value systems and language systems puts many young readers at a disadvantage. As I stated on the air, it is difficult to understand a story or a character if there is nothing familiar in them. For example, most Indian stories follow a circular pattern unlike (white) traditional western stories which follow a linear pattern. These differences are central to the manner in which a child constructs meaning or makes sense out of what they read. When we (educators & writers) only understand the world from one perspective--our own, we tend to privilege and accept only one meaning from all children. This is unfair. Not only is it unfair, it is racist. This was the point of my argument. I used the term Eurocentric and the phrase "white-male-model" to illustrate my point that the form and content of most of the stories about Indian customs are written from a world view or belief system that is not Native American.

Also, I agree with you in not wanting to "beat a dead horse" and I was attempting to discuss the problem and to offer some guidelines and some alternatives that I have found do contribute to "solving some problems." It has been my experience in teaching (minority and white students) that often we do not have a clear-cut idea of exactly what the problems are. In order to begin to develop solutions we need to bring the problems to the surface...we need to name them.

Thank you for your letter and for your thoughts on this subject and your thoughts about KRCL. Your letter is a good indicator of how effective a public forum such as KRCL and Living the Circle of Life is in maintaining a dialogue between groups in this diverse community.

Georgia Johnson
University of Utah
School of Education

Dear KRCL staff,
It's amazing how much philosophy can fit into such a small building. Whether or not I agree with the views voiced on the air, it's truly refreshing to hear the diversity of the view exposed by KRCL volunteers and listeners.

Thank you for providing an alternative for Salt Lake.
Sincerely,
J. Demarest
P.S. Special thanks to Mark C. Jackman for the most unique program to cross the airwaves.

KRCL Volunteer to head Rape Crisis Center

The Board of Directors of the Salt Lake Rape Crisis Center recently appointed Abby Trujillo Maestas, long-time KRCL volunteer, as the new executive director for the Center.

"Our mission is to assist all

victims of sexual assault and rape in a sensitive and timely manner, to work to prevent assault, and to educate the community about the issue," says Maestas, who serves as co-host to La Voz de la Gente, a program discussing issues relating to Utah's Hispanic population, airing Fridays at 12:30 pm.

"In 1990 the Salt Lake Rape Crisis Center provided crisis intervention to over 2,900 individuals. The Center's Mobile Team responded to 449 reported rape victims. Of these victims, 40% were under 14 years of age," Maestas said.



Comments

Donna Land Maldonado
Program Director

Season's Greetings!

The support for Radiothon was tremendous. Many thanks to the pledgers, contributing businesses, and 125 plus, volunteers of KRCL. What a wonderful way to close out the year and to celebrate KRCL's 12th birthday.

What did you think about the Pacifica Townhall Meetings? More? Okay, but...? Discontinue? We, KRCL and the Pacifica producers would like your feedback. Please take a few moments to jot down your thoughts or suggestions, or phone them in on the KRCL comment line, 363-KRCL. For that matter, comments or suggestions on any of the KRCL programs are important in evaluating them.

Listen for these shows: a new series entitled, *Science Lives: Women and Minorities In The Sciences*; Dr. Helen Caldicott's speech given during her visit to Utah; a round table discussion of hate crimes in Utah; how different cultures celebrate the holidays; and children's stories (for all of us) during the Christmas vacation. See promo ads for details and times.

Due to unforeseen difficulties the series *New Earth Radio* has been put on hold by the producers.

Again, thank you. Reward yourself—take a moment each day to behold our beautiful landscape and enjoy the quiet of the winter. Merry, Merry.
Respectfully,

Donna

Public Affairs

SUNDAY

6:30 am
Morning Light
"Consider The Alternatives."
Global concerns. Produced by the SANE Education Fund.

8:30 am
National Native News
Headlines and stories from Indian Country. Produced by the Alaska Public Radio News Service.

5:00 pm
Riders Radio Theater
New age cowpoke humor, zany and cowboy music by Riders in the Sky.

7:00 pm
New Dimensions
A timeless and relevant interview series particularly well suited for the "inner directed" audience. Intelligent, thoughtful and engaging. Hosted by Michael Toms. Repeated Thursday at 1 pm.

MONDAY

8:30 am
Morning Light
"Consider The Alternatives."
Discussions of global concerns and possible solutions. SANE Education Fund Production.

12:00 pm
Reading
Short stories, novels or essays read by a variety of readers from a variety of sources.

12:30 pm
Our Arts
Interviews with local or visiting artists. Produced by alternating hosts, Kim Duffin, Steven Epperson, Mark C. Jackman and Marilyn Scharine
Nov. 4: Kim will explore both the Western Folk Life Center's three day choral folk festival and the annual Children's Literary Conference.
Nov. 11: Mark C. is leaving for San Francisco next year. Marilyn talks with this musi-

cian, film student, and long-time KRCL family member.
Nov. 18: Art in Utah: Strengths and weaknesses of regional art. An interview with William A. George Gerdt by Steven Epperson.
Nov. 25: "Refuge: An Unnatural History of Family and Place." Marilyn talks with naturalist and author, Terry Tempest Williams.

Dec. 2: Kim's guests will present a variety of holiday shopping ideas from exhibits by local artists.

Dec. 9: Mark introduces us to a woman who can act, direct, herd sheep, and the founder of the experimental Grand Hotel Theatre, Donna Todd.
Dec. 16: "Of Earth, Sky, and Woman's Hands" Hopi potter, Laura Mae Dashee speaks with Marilyn.

Dec. 23: Joys of the Season and "A Christmas Carol."
Dec. 30: Look to the New at the Utah Film and Video Center with Mary Cranney and Mark C. Jackman

6:30 pm
Pacifica News
National and international news from an alternative point of view. Produced by the National Pacifica News Dept.

TUESDAY

8:30 am
Morning Light
Women's Public Affairs. November 12 and 19 will feature Dr. Helen Caldicott's speech given in Salt Lake City last month.

12:00 noon
Reading
A half hour of readings.

12:30 pm
People's Business
Discussions on community and social concerns. Robin and Dr. Mary Simper give the perspective of the older population. "SouthPaw" airs the third Tuesday, perspectives from the po-

litical left. The ACLU drops by once a month to keep us up to date on our Bill of Rights.

6:30 pm
Pacifica News
In depth news reports of an alternative nature.

WEDNESDAY

8:30 am
Morning Light
COMMON GROUND looks at and discusses global issues. Distributed by the Stanley Foundation.

Nov. 6: "The New Saudi Arabia" James Akins discusses how U.S. troops got into the country, how the U.S. will use its new influence, and how Saudi Arabia will face the future.

Nov. 13: "The Future for African Democracy" discussed by Olara Otunnu, President, International Peace Academy; James Jonah, Under-Secretary-General, U.N.; and Francis Deng, Senior Fellow, The Brookings Institution.

Nov. 20: "Security in a New World Order" with Maurice Bertland, Professor, Graduate Institute of International Studies, and Brian Urquhart, Scholar-in-Residence, The Ford Foundation.

Nov. 27: "Surviving Conversion" Michael Classan, Exec. Director of Center for Economic Conversion, talks about his analysis of defense-dependent communities.

12 noon
Reading
Brownbag your lunch with Reading.

12:30 pm
Concerning Gays And Lesbians
Information, news and interviews from Utah's gay and lesbian population. Plus the new short feature: "Because We're Here."

6:30 pm
Pacifica News
National and international news.

THURSDAY

8:30 am
Morning Light
Public Affairs in the third degree. A troubled future for the scientific life of the United States is predicted if present trends continue. Scientists say two major factors will contribute to this trouble. First is an expected shortage in the number of employable scientists and technicians. Second is the appallingly low level of scientific knowledge in the general population of the United States.

Nov. 7: "A Shortage of Scientists" A troubled future for the scientific life of the United States is predicted if present trends continue. Scientists say two major factors will contribute to this trouble; first, an expected shortage in the number of employable scientists and technicians, and second, the appalling low level of scientific information in the general population of the United States.

Nov. 14: "Opportunities in a Crisis" e.g. Am. Indian Science and Engineering Society science fair, the National Urban League project for pre-schoolers, and innovations at U.C. Berkeley.

Nov. 21: "The Right Chemistry" Nobel Prize winning chemist Gertude Elion who has tackled leukemia, rheumatoid arthritis, AIDS, acceptance of organ transplants, with breakthroughs every ten years, proves persistence.

Nov. 28: "It Must Have Been a Plant" Eloy Rodriguez, a phytochemist and toxicologist, searches for effective medicinal plants which takes him to deserts and forests, which he fears are being destroyed.

Dec. 5: "Out of This World" A Profile of Mae Jemison, the

first Black woman astronaut candidate chosen by NASA, a physician, dancer, choreographer and chemical engineer.
Dec. 12: "Interplanetary Voyages" Cherokee Indian and mathematician, Mary Ross was the first woman engineer employed by Lockheed. Her calculations have provided criteria for piloted and remote orbits.

Dec. 19: "Soul of a New Gene" Lydia Villa-Kamaroff has been at the center of ethical issues regarding recombinant DNA. She was a member of the team that cloned and expressed insulin in bacterial cells. Her current focus is on the development of the human brain.

Dec. 26: "There Must Be a Cure" Cecil Pickett, Executive Director of Research at Merck Frost Center for Therapeutic Research in Montreal, Canada, is responsible for programs aimed at lowering cholesterol levels in the body, with a primary interest in the regulation of gene expression.

12:00 noon
Reading
Stories or books; perhaps poetry.

12:30
Lunch Encounter
Nov. 7: MUSEUM NOTES with Marlene Lambert, who gives us an audio tour of the natural world.

Nov. 14: UTAH ISSUES with Bill Walsh, who provides us with a wide perspective of social concerns in Utah.

Nov. 21: SENIOR SOUND OFF with host David Turner, who focuses on the different providers for the elderly.

Nov. 28: Thanksgiving Special with a Native flavor.
Dec. 5: MUEUM NOTES.
Dec. 12: UTAH ISSUES.
Dec. 19: SENIOR SOUND OFF.

Dec. 26: 'twas the day after Christmas and the tax man cometh.

1:00 pm
New Dimensions
See Sunday 7 pm for schedule.

6:30 pm
Pacifica News
In depth, alternative.

FRIDAY

8:30 am
Morning Light
"Crossroads"
A weekly magazine that focuses on people-of-color issues and topics as well as general issues from a minority perspective. Toucan Productions.

12 noon
Reading
Various readers reading various material.

12:30 pm
La Voz De La Gente
Guests talk with Abby Trujillo Maestas and/or Rebecca Chavez-Houck about the topics of advocacy, service, information, political and cultural concerns...of, for and about Utah's Hispanic population.

6:30 pm
Pacifica News
An in-depth news report on headlines and real stories.

Short Features

Monday
7:15 am Arboretum report
3:25 pm Undercurrents
5:00 pm People Like Us

Tuesday
11:00 am Women's News
3:25 pm Undercurrents
5:00 pm Environmental Update
10:30 pm People Like Us

Wednesday
12:55 pm Because We're Here
3:25 pm Undercurrents
5:00 pm Utah Wilderness Update

Thursday
10:30 am Women's News
11:30 am Because We're Here
3:25 pm Undercurrents
5:00 pm Southern Utah Wilderness Alliance Update

Friday
3:25 pm Undercurrents
5:00 pm Central America Update

Saturday
11:00 am Environmental Update
1:00 pm Undercurrents

Sunday
9:55 am Central America Update
12:00 pm Southern Utah Wilderness Alliance Update
1:00 pm Undercurrents

StarDate airs daily at 8:00 am, 5:30 pm, and 10:00 pm

Letters to the Editor follows *Pacifica News* Monday-Friday, at approximately 6:58 pm

HALCYON
SQUARE N
ETHNIC MUSIC GALLERY & CULTURAL ARTS

featuring
CDs,
Tapes,
Ethnic Arts

Specializing in
Imports
Blues
Reggae
World Beat
Women's Music



1300 South 900 East, Suite 7
Salt Lake City, Utah 84105
(801) 487-9505

Dulcimers,
Guitars, Lessons,
Repairs

Acoustic Music

857 East 400 South
Salt Lake City, Utah 84102
Call (801) 531-7066



W A S A T C H
T R A V E L

5635 So. WATERBURY WAY, SUITE C101
SALT LAKE CITY, UTAH 84121
801-278-4771

Music Notes

Ken Pavia,
Music Director

While there is indecision and upheaval throughout our nation with the Thomas confirmation, the bounced checks and unpaid debts of our congressional leaders (without any bounced check fees!), KRCL continues on its steady and decisive course in attaining its mission of providing quality alternative music and public affairs programming for our community.

If Radiothon is any indication, KRCL has become more and more an important part of the lives of individuals in our community. Our overall total is a new all-time high--\$72,398. A large part of that is a reflection of the increasingly better quality music programming we have been trying to develop. I want to thank all of you who supported your favorite music program(s) during our Fall Radiothon. I have some great new shows and volunteers to introduce.

First, Bryan Baker comes to us with a new show called *Cassette Culture Shock*. Monday morning 3:00-6:00 am With his extensive resources, he plays music found only on independently-released cassettes. His music comes from all over the world. It also means that you aspiring, local artists should send in your cassettes for him to play.

After a long and extensive search, we have found a permanent host for our Monday *Global Gumbo* show, 1:00-3:30 pm, Jeff Salt. Jeff brings with him a wealth of experience (he has traveled extensively and spent time in Nigeria) and a great love of world music. He is committed to bringing you a wide variety of music from throughout our world.

Uma Khandkar and Anjali Deshpande have joined our *Asian Chimes* team on Saturday mornings to bring you music from India for the benefit of our local Indian community and any other listeners interested in a style of music over 4,000 years old. They will be doing the first hour, from 7:00-8:00 am, and I invite all of you to begin your Saturdays with their sweet and meditative sounds.

Jodi Stewart-Browning joins our team of *Breakfast Jam* hosts to do the Wednesday slot, from 6:00-8:30 am. Jodi is a long-time, dedicated listener and supporter of KRCL, and is fulfilling a dream of hers to be a KRCL on-air programmer. Her cheerful attitude and selection of music are sure to get you in a great mood for the day.

Though not a new volunteer, Mike Christy is the new host of Wednesday *Drive Time*, from 3:30-6:30 pm, after hosting the late-night show *Hole in the Sky* for one and a half years. Mike offers you a rebellious selection of rock, blues, a little bit of reggae, folk, world, and a whole lot more.

The following shows have moved to different times. *One Step Beyond* has moved to Thursday 1:00-3:30 am *Decades With Dwight* has moved to Thursday 3:30-6:00 am.

Finally, we want to thank Ken Cursoe of *Unclear Nightmares* for his work doing a late night show. He has decided to give it a rest. We hope to hear from him again.

Happy Listening!

Ken

Music

SUNDAY

6:30 to 7 am
Morning Light
"Consider the Alternatives"

7 to 10 am
Living the Circle of Life
Native American music, news and information with host Isaiah Lee. National Native News airs at 8:30 am.

10 am to 2 pm
Sagebrush Serenade
Music to ease you from your morning cup through your Sunday afternoon. Manageable folk and rock with a country flavor with alternating hosts Phil Lanouette and Rick Stayner.

2 to 5 pm
Bluegrass Express
Join the Flinners--Papa Bob and son Matt--for the best in bluegrass; music that is at the root of a lot of the country and folk tunes popular today.

5 to 5:30 pm
Riders Radio Theater
Cowboy music and zaniness from "Riders in the Sky."

5:30 to 7 pm
Fret 'N' Fiddle
Traditional folk music from here and abroad, with your host Lewis Downey or Mark Cantor.

7 to 8 pm
New Dimensions
See Public Affairs Schedule.

8 to 11 pm
Nexus
New Age music with John Schellinger.

11 pm to 1 am
Variables
Electronic, new age and contemporary jazz with your host Scott Howard.

1 to 3 am
Brave New World
Industrial Dance music with Eric Anderson

3 to 6 am
Music

MONDAY

6 to 8:30 am
Breakfast Jam
A blend of acoustic, folk, and acoustic rock. Goes down well with coffee and toast. Hosted by June Turnbull.

8:30 to 9 am
Morning Light
"Consider the Alternatives"

9 am to 12 pm
Touch the Earth
Come touch the earth with Perry Shepard as he takes you on a journey through the world of acoustic oriented and folk music.

12 to 12:30 pm
Reading

12:30 to 1 pm
Our Arts

1 to 3:30 pm
Global Gumbo
The beat is everywhere.

3:30 to 6:30 pm
Drive Time
Join Mike Anderson for a wide range of music with an emphasis on rock, jazz, and blues.

6:30 to 7 pm
Pacifica News

7 to 8 pm
Montage: Radio Pilipino
Experience Philippines--their music and news. Keep up with the latest "Pinoy" happenings in Salt Lake City. Hosts Vic Fernandez and Joseph Moratalla.

8 to 10:30 pm
Red, White, and Blues
Explore the variety of this distinctively American musical form, with a smattering of her offspring: jazz, rockabilly, soul, rock-n-roll. J.R. Rokich is your host.

10:30 pm to 1 am
Blue Highways
Truman brings you electric blues, from the sixties to the hottest artists now on tour. The best in soulful guitar, harmonica and horns to drive away your Monday blues.

1 to 3:30 am
Nuclear Nightmares
The Industrial Revolution continues into the late night hours with D.J. to the People, Ken.

3:30 to 6 am
One Step Beyond
Ska music including early Jamaican, blue beat, two tone and the latest. Ska Bob and Rude Jack host.

TUESDAY

6 to 8:30 am
Breakfast Jam
Many varieties of music suitable for stimulation, motivation, and contemplation. With your host Matthew.

8:30 to 9 am
Morning Light
Women's public affairs.

9 am to 12 pm
Women or Nothing
Ann Bolland, Beth Weech, or Julie Lueders present a variety of music by women. Rock, jazz, soul, folk, country and more as it's discovered.

12 to 12:30 pm
Reading

12:30 to 1 pm
People's Business
See Public Affairs Schedule

1 to 3:30 pm
Global Gumbo
One world radio starts here. With host Fillat.

3:30 to 6:30 pm
Drive Time
Mostly new rock, with an alarming trend towards folk, with Steve Connor.

6:30 to 7 pm
Pacifica News

7 to 8 pm
Montage: Voice of Polynesia
Music from Samoa, Tonga, Tahiti, and other Pacific Islands with alternating hosts--Wayne and Ellen Selu, Joel Uluakiola, and Danny Tapeta.

8 to 10:30 pm
Generic Radio
Barb Guy plays a profusion of great music, featuring new wave, rockabilly, reggae, and silly music. If you think Talking Heads and Annette Funicello go well together, you'll love it.

10:30 pm to 1 am
God's Zoo
Join Scott Bringard for a variety of Alternative and Underground music.

1 to 3:30 am
Graveyard Shift
Brian Barkey wakes the dead playing blues and old rock 'n roll. Why bother sleeping?

3:30 to 6 am
Positive Charge
Early morning electronic and electric music with host Pouwel Veenstra.

WEDNESDAY

6 to 8:30 am
Breakfast Jam
Ease into the day with some new age, acoustic, folk, and jazz.

8:30 to 9 am
Morning Light
"Common Ground"--international issues.

9 am to 12 pm
Le Cafe Folk
Contemporary folk music with a touch of tradition hosted by Donna.

12 to 12:30 pm
Reading

12:30 to 1 pm
Concerning Gays and Lesbians
News, information, and interviews from Utah's gay and lesbian community.

1 to 3:30 pm
Global Gumbo
Afro-beat to Zouk, with plenty of other worldly beats mixed in. Monthly specials on certain performers, countries, and styles. With your host Steven Seftel.

3:30 to 6:30 pm
Drive Time
Everything and anything.

6:30 to 7 pm
Pacifica News

7 to 8 pm
Montage
Host Craig Miller presents ethnic music of the local communities. First Wednesday hosted by John Shilaos for Greek music and info on Greek community.

8 to 10:30 pm
Red-I Roots
Reggae & its relatives. Hosted by Ken Quail.

10:30 pm to 1 am
Nite Roots
Reggae, reggae, reggae with Papa Pilgrim. Listen for the "Roots Report"--music and biographical anecdotes of selected artists and groups.

1 to 3:30 am
Music

3:30 to 6 am
Hole in the Sky
Late night rock, early morning country. Host Mike Christy.

THURSDAY

6 to 8:30 am
Breakfast Jam
Ease into the day with some rock, folk, jazz, and Jo Wilson.

8:30 to 9 am
Morning Light
See Public Affairs Schedule.

9 am to 12 pm
Women: The Second Decade
Babs DeLay shares the accomplishments of women in the music industry from the 1920's to the 1990's. Women's News, Rape Crisis Report and weekly specials on women in herstory.

12 to 12:30 pm
Reading

12:30 to 1 pm
Lunch Encounter
See Public Affairs Schedule

1 to 2 pm
New Dimensions Radio
A rebroadcast of Sunday's program. See Public Affairs Schedule.

2 to 3:30 pm
Global Gumbo
Johnson takes you on musical jaunts around the globe, set to break all barriers with word sound power.

3:30 to 6:30 pm
Drive Time
Host Barbara Barnes gives you an eclectic mix of alternative rock, blues (old and new) and more.

6:30 to 7 pm
Pacifica News

7 to 8 pm
Listener's Choice
KRCL's listeners play their favorites.

8 to 10:30 pm
Aural Decay
A diverse mix from rock to reggae. You want covers? We got 'em. If they don't fit, we'll take 'em in a little. Hosted by Dave S.

10:30 pm to 1 am
Perpetual Change
From Jimmy Buffet to the Dead, Otis hosts your late night rock show.

1 to 3:30 am
Audio Perspectives
Kristina explores the extreme variety of underground music.

Schedule

SATURDAY

4 to 7 am
Gospel Connection
Gospel, contemporary Christian rock. An unexpected mix pulled together by Carol and Marvin Dixon.

7 to 8 am
Radio Metro
Sample some "Hispanic"--urban sound featuring some of the latest in pop and rock from Latin America and Spain with your host Martin Gonzalez.

8 to 10 am
Asian Chimes
Music and information from the communities of China (with Grace G. and Zhandong Zhong), and Viet Nam (with Dung Hoang, and Thu and Thuy Vo).

10 am to 1 pm
The All-Weather Radio Show
Presentation of 60's music; past and present; folk and rock; familiar and obscure. Hosted by Hamamoto.

1 to 4 pm
Unusual Occurrences in the Desert
Acid rock to Zydeco. A to Z. Rock and Reggae. R & R. If the mood fits, wear it! Hosted by Lisa Mace.

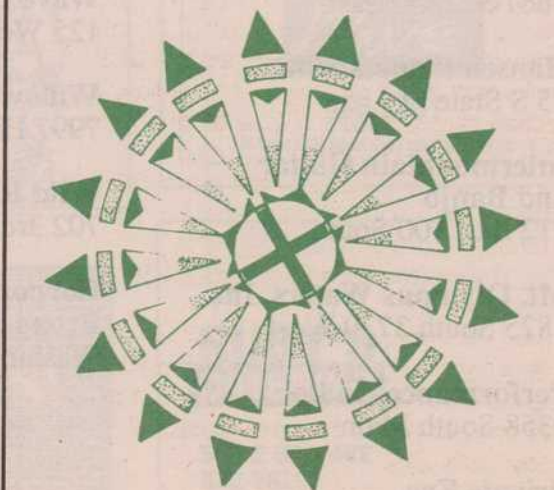
4 to 7 pm
Smile Jamaica
The tradition continues: from Spongi Reggae to deep dish Dub. Host Robert Nelson serves up strictly roots.

7 to 9 pm
Phono Synthesis
Jon Bray and Kay Robinson try to bring light to a dark music scene. Tune in and grow.

9 to 11 pm
Signals from the Shadow Pools
"Remember me when far off, when grey turkeys have whooping cough." More songs for the cyber-tribe.

11 pm to 3:00 am
Behind the Zion Curtain
Synthetic, authentic punk--hard core! Brad Barker is the guilty one who cracks your Saturday nights and Sunday morns with the sounds of the new wave.

3 to 6:30 am
Sonic Slaughterhouse



Support these underwriters

- | | |
|---|--|
| Acoustic Music
857 East 400 South | Rio Grande Café
270 South Rio Grande Street |
| Ann Sturdevant
3965 War Road | Ruby's Catering
564 East 3rd Avenue |
| Bakers C&C, Inc.
367 West Paxton (1170 S) | Salt Lake Community College
Salt Lake City |
| Blue Boutique
2100 South 1100 East | Salt Lake Community Health Center
2300 West 1700 South |
| Café Rude
961 South State | Salt Lake Roasting Company
249 East 400 South |
| Cajun Kitchen
4900 S 900 E | Snowbird
Ski & Summer Resort
Little Cottonwood Canyon |
| Catalyst
140 South McClelland | Soundoff
2107 South 200 East |
| Chase Gallery
260 South 200 West | Spirit of Africa
1265 W 500 N |
| The Coffee Mill
in Cottonwood Mall | Sunrise Press
252 West 1300 South |
| Control Products Co.
5282 South 320 West | T P Gallery
252 South Main |
| Cream O' Weber
Look in your local grocery stores. | Ukhozi—African Arts
Crossroads Mall 3rd Level |
| Dan's Foods
Salt Lake City | U.S. Voice Mail
450 South 900 East, Suite 110 |
| Dead Goat Saloon
Arrow Press Square | Utah Museum of Natural History
University of Utah |
| Downtown Storage
29 West 800 South | Utah Trails Bicycle Expeditions
Brighton Circle |
| Gaia
371 South West Temple | Wasatch Touring
702 East 100 South |
| Gardiner Distributing
554 West 100 South | Wasatch Travel
278-4771 |
| Get in Here!
562 Main Street Park City | Wave Products
125 West 2100 South |
| Great Harvest Bread Co.
4667 S. 2300 East | Willowcreek Pet Center
7997 Highland Drive |
| Hansen Planetarium
15 S State St | Wild Rose
702 3rd Ave |
| Intermountain Guitar and Banjo
712 East 100 South | Corporation for Public Broadcasting
Washington, D.C. |
| Mt. Olympus Waters, Inc.
1825 South 3730 West | |
| Performance Audio
2358 South Main | |
| Private Eye
125 West Center Midvale | |

**SUPPORT FREEDOM RADIO!
if you don't who will?**

Name _____
Address _____
City _____ State _____
Telephone _____ Zip _____

- \$500 Destined for Sainthood
- \$100 Patron
- \$91 Supporting (plus KRCL Table)
- \$60 Supporting (plus KRCL Deluxe Fanny Pack)
- \$35 Supporting (plus KRCL T-Shirt or Mug)
- \$25 Supporting Listener
- \$20 Student or Low/Fixed Income

All contributors receive the program guide.

Mail to: **KRCL**
208 West 800 South
Salt Lake City, UT 84101
Phone: (801) 363-1818



- BAUHAUS
- BEATLES
- BOWIE
- CLASH
- CRAMPS
- CURE
- DEAD
- DEPECHE
- DOORS
- ECHO
- FLOYD
- HENDRIX
- JOY DIV.
- LED ZEP
- MARLEY
- MORRISSEY
- PISTOLS
- SHOEXIE
- SMITHS
- STONES
- U-2
- WHO
- ZAPPA - and many more

THE RECORD COLLECTOR
1115 E. 2100 S. Sugarhouse

A GREAT SELECTION OF NEW, USED LP'S, CD'S, IMPORTS, CASSETTES, 12", 45's - AND

THE WORLD'S GREATEST POSTERS



KRCL thanks the following businesses and individuals who donated money to KRCL through Challenge Grants:

- Acoustic Music
- Robert Archuleta
- Blue Boutique
- Cream O' Weber
- Dan's Foods
- Dead Goat
- Foothill Oriental Rugs
- Grunts and Postures
- Haley and Stolebarger
- Intermountain Guitar and Banjo
- Kirkham's Outdoor Products
- The Pub
- Rio Grande Cafe
- Sunrise Press
- Westminster College Student Association
- Willow Creek Veterinary Clinic

GAIA



CELEBRATING THE SPIRIT OF THE EARTH
Offering a variety of environmental and peace Tee-shirts, buttons, bumperstickers, posters, tie-dyes, incense, Earth flags, and original local art.



371 S West Temple
532-2121

ATTICUS BOOKS AND COFFEEHOUSE



1132 South State Street Orem, Utah 84058 (801) 226-5544

Ann Sturdevant

Realtor **THAYNE & ASSOCIATES**
4609 South 2300 East
Suite 204
Salt Lake City, Utah 84117
Residential and Condo Specialist

New & Used • LPs • Tapes • CDs

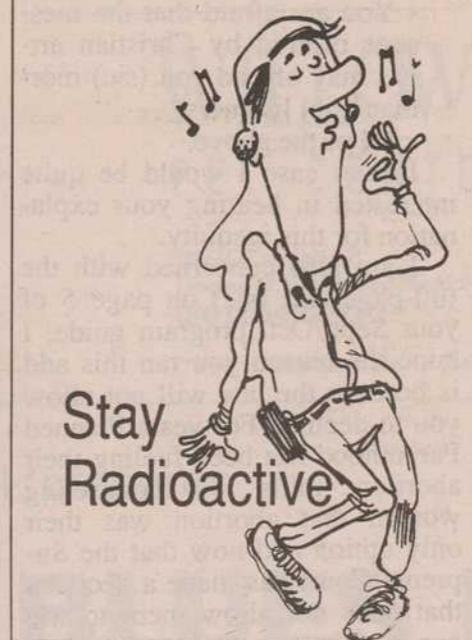
GET IN HERE!
562 Main Street • Park City • 1-649-1141

GET IN HERE!

Out of Print • Alternative Rock
Jazz • Blues • Reggae • Zydeco

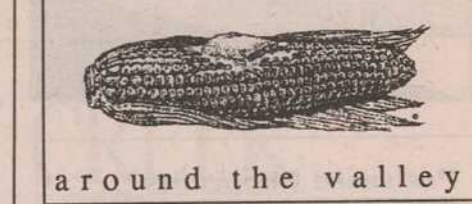
Imports • Modern Music • Hardcore • Folk

Happy New Year from 91FM KRCL



Stay Radioactive

Dan's Foods



Backpacks, Duffles, Equipment Bags (photo, musical, and more)
Cool Colors!
Sail and Gear Repair
Visit our factory showroom

Wave

466-6061
125 West 2100 South Salt Lake City, Utah 84115

RUBY'S CATERING

564 E 3RD AVE
532-7829

Utah Green Products 486-6460

The gift-giving season is upon us. Consider giving to the Earth as you give to a friend. Water-saving devices, string bags, fluorescent lights, children's music and books provide a "green" alternative. We also carry 100% recycled cards and wrapping paper!

Now available at:
Nature's Way
416 East 900 South
Jeweled Maidens
1721 West 4160 South
in Carriage Square
The Blue Roof Market
Rt. 224 near Park City

Call 486-6460 and ask about our Holiday packages! Also ask us about our special on recycled copy paper and computer paper!

Gardiner Distributing
554 West 100 South
Salt Lake City, Utah 84101

PREFERRED PROPERTIES

716 East 4500 South,
Suite S/260
Salt Lake City, Utah 84107
Tel (801) 266-1116

Babs DeLay

REALTOR
Voice Mail: 461-3368

**PRIVATE
EYE
NEWS EVENTS**

KRCL Airs Christian and Non-Christian Voices

Dear Mr. David Young, KRCL appears to give ear, or should I say air, to just about every form of musical expression known to man, with one very notable exception. I notice that the Christian artist is not allowed to express himself in the "public" forum of 91FM. In wrestling with the obvious question, why, I have arrived at the following possibilities.

- Public Broadcasting regulations do not permit the airing of truth. "Religious" material is not permitted by public broadcasters. No, this could not be a possibility because you play New Age music. New Age is a religion. You also play heavy metal music which carries a satanic message. Satanism is a religion.
- KRCL is just another secular humanist entity, whose goal is to appear interested in the problems facing mankind, while espousing the half-truth, band-aid type solutions of humanism.
- You don't think there is any Christian music that could measure up to the high standards of quality that KRCL demands for its listeners.
- You have received countless cards and letters from your listeners, asking that no Christian music be played on KRCL.
- All of your time slots are full and the station is waiting for an opportunity to add a fifteen minute segment for contemporary Christian music.
- You are afraid that the message offered by Christian artists may offend you (sic) morman (sic) listeners.
- All of the above.

In any case I would be quite interested in hearing your explanation for this inequity.

I am also concerned with the full-page add (sic) on page 5 of your Sept./Oct. program guide. I hope the reason you ran this add is because the law will not allow you to decline. For years Planned Parenthood has been fueling their abortion mills by counseling women that abortion was their only option and now that the Supreme Court has made a decision that does not allow them to use our tax money to spread their birth control by murder philosophy, they find themselves in a state of "emergency." The court in no way has told them what they can or cannot say, only who is or is not going to pay for it. If they feel "gagged," it is because of their greed not any desire to help women. Publish these views on a full-page add and it will go a long

KRCL takes no position about religion, but tries to air information and opinions that are relevant to our community of listeners, which includes those of many religions. Again, statements made on KRCL are reflect the opinions of the speaker; not the station.

For over five years, KRCL has aired Christian and Gospel music, three hours a week, on our show called Gospel Connection, Saturday 4:00-7:00 a.m. Listen and let us know what you think. There are other methods available to individuals and non-profit organizations to have their music or voices aired.

Listener's Choice, Thursday 7:00 p.m., is a show for listeners to play an hour of music of their choice. Send a 20-song playlist to Listener's Choice, c/o KRCL, 208 W. 800 S., Salt Lake City, UT 84101.

Letters to the Editor, weekdays at 6:58 p.m., is a program that airs listener opinions and comments about whatever topic. Send your letter to Letters to the Editor, c/o same address above.

way toward convincing me that this station is concerned about something besides money. These Planned Parenthood "people" make me sick. They are always waving the banner of "choice." Don't they realize that in all but just a few pregnancies (less than 1/2%) that result in abortion, the women involved did have a choice. They just made the wrong one. Now, the neat and clean answer is to take away the "choice" of the one in the womb and sweep the mistake under the rug. My mind is full of so many unclean things to say about this that I could go on and on, but I'm sure you can see that is best that I stop here.

Sincerely,
Steve D. Hayes

Dear Program Guide Editor, I'm a solid KRCL supporter, and I appreciate the variety of programming offered on the station. However, I want to state an objection to the content of the "Our Arts" program on Sept. 30.

The speaker took the activities of certain people with specific political objectives, and generalized these to a much larger and more general group of people with a certain set of spiritual beliefs (Christians). If, for example, someone took the objectionable political goals of a limited number of specific Jewish people and—making a rash generalization—said that all Jews were plotting on those goals, we would all call that person a bigot, a racist, or at the least, paranoid. Yet the speaker on "Our Arts" made a similar kind of unfair generalization in his description of Christians. I am a Christian (and I even have what the speaker might term "fundamentalist spiritual beliefs"), but I don't advocate censorship, I'm not trying to take control over the world, and—believe it or not, in contrast

to the speaker's generalizations—I do buy many records with independent labels.

It seems that there is a double standard operating for many otherwise "politically correct" people. While these people agree that it isn't okay to mock or unfairly judge people of color, people of a gay/lesbian sexual orientation, or people who are physically or mentally challenged, for some reason they feel it's perfectly fine to mock or make rash generalizations about groups who have specific spiritual beliefs—especially those who identify themselves as "Christian." I'm tired of having to hide my spiritual orientation when I'm with "politically correct" colleagues, and I'm tired of hearing people make rash generalizations about what "Christians" do, disregarding that there can be individual differences among this group of people. I still support KRCL, I still support the notion of free programming, and I still plan to donate to KRCL every year...but in the interests of open dialogue I felt compelled to state my views.

Sincerely,
Sherri Vance

Dear Sir/Madam, Please take our name from your mailist (sic). The Pro-Unborn Murder add (sic) in the last issue of KRCL Program Guide was offensive to our God and our faith.

Sorry you all in Utah do not put as much value in the unborn as God does.

Sincerely,
Jay Moore
Mountain Therapy Records
New Castle, Pennsylvania



Grateful Dead Productions

and

KRCL 91FM

are please to announce the 1991-92 Live New Year's Eve radio simulcast.

December 31st

Stay tuned to KRCL for further information.



KRCL thanks the following businesses and individuals who donated food to our volunteers during our very successful Fall 1991 Radiothon:

Angela's Catering
Cafe Mediterranean
Cafe Rude
Cannella's
Crompton's
Free Wheeler Pizza
Great Harvest Bread
Deb Levine
Litza's Pizza
Maureen Mooney
New Frontiers Natural Foods Market & Cafe (both locations)
Park Cafe
Peery Pub
Pizza Time
Ruby's Catering
Soup Kitchen
Sun Bun Cafe
Jo Wilson

Station yourself at a Rio Grande Place!



Rio Grande Cafe

Authentic Mexican Food

Rio Grande Train Station
270 South, 455 West
Lunch, Mon - Sat 11:30 - 2:30
Dinner, Sun - Thur 5:00 - 10:00
Fri - Sat 5:00 - 10:30



GREAT GEAR FOR WINTER FUN FROM WILD ROSE

SKATE SKIS:
CUTTING EDGE PRODUCTS FOR WINTER FUN AND FITNESS FROM BLIZZARD, ATOMIC, KNEISSL, SALOMON, ALFA AND REFLEX. COMPLETE SELECTION OF RACE WAXES AND TOOLS.

BACKCOUNTRY TOURING:
QUALITY METAL EDGE GEAR FROM ATOMIC, ASNES, TUA, ASOLO, VOILE, AND ROTTEFELLA.

CLOTHING:
TECHNICAL OUTERWEAR AND FUNCTIONAL ACCESSORIES FOR OUTDOOR WINTER ACTIVITIES.

SERVICE:
WE OFFER A FULL SERVICE REPAIR FACILITY. MOUNTING, TUNEUP DELAM AND EDGE REPAIR. PLUS BASE PREPARATION AND RACE WAX SERVICE.

DEMO & RENTAL:
METAL EDGE, SKATING AND LIGHT TOURING.

WILD ROSE
702 THIRD AVE
533-8671

WILLOW CREEK PET CENTER

Rick Campbell
Doctor of Veterinary Medicine
(801) 942-0777

7997 S. Highland Dr. • Salt Lake City, Utah 84121

**Free Wheeler
Pizza**

The Quality Pie
Delivered FREE

Sugarhouse
2150 S. 700 E.
486-3748

Now Downtown at
THE ZEPHYR CLUB
301 S. West Temple

Serving Dinner and Appetizers for members and guests.

For fast Free Delivery call
322-FREE (3733)

Mention KRCL and receive 1 dozen famous Garlic Rolls with any Large Pizza order.



(not valid with other discounts)

**Free Wheeler
Pizza**



91FM KRCL presents

BLUE DEVIL'S BLUES REVUE

LIVE FROM THE DEAD GOAT SALOON—EVERY MONDAY 9:00 PM

Last Monday of each month is broadcast live on KRCL 91FM with a national blues artist.

November 25th at 8:00pm come see NICK GRAVINITES

THURSDAY MORNINGS
9:30 AM

RAPE CRISIS REPORT

ON 91FM
WITH YOUR HOST BABS
DURING
WOMEN: THE SECOND DECADE

Rape Crisis Center Welcomes New Volunteers

New Volunteer orientation will be held at
2035 South 1300 East
November 8th

Call for an application and further information.

467-7273



HOW CAN YOU PARTICIPATE?

There are many ways you can participate in community radio. Your participation is not only welcomed and appreciated; it is essential to our longevity. Among the many ways you can take part are these...

...Listen and call in your opinions. We are interested in your reactions, observations and ideas.

...Promote your community clubs and organizations. Keep us apprised of your meetings, fundraisers, and recognition awards to be publicized on the air.

...Volunteer your services. From answering phones during a fundraising drive to becoming a member of the board of directors, your services will help.

...Become a member through a tax-deductible contribution. If you would like to see us continue serving your community, become a member. your contribution will

help cover such costs as rent, heat and electricity, and possibly satellite time.

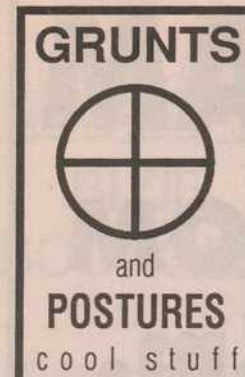
...Underwrite a program. By underwriting (paying for) the production and/or broadcast costs of programming, your company can gain positive community exposure. In fact, when you become an underwriter, your company name, location, and a brief description of your products or services will be broadcast before and after each underwritten program. Your message will be heard by up to 35 thousand KRCL listeners.

...Advertise in the KRCL program guide, which can be a unique and inexpensive way to promote your company to members of the community.

Hear for yourself how community radio, with our diverse, alternative programming, is serving you like no other radio station can.

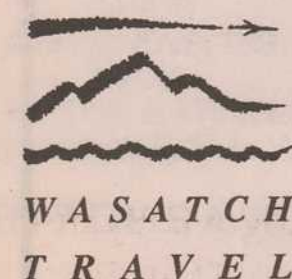


Have an evening of peace with KRCL's Nexus and Variables. Sunday night beginning at 8 pm



VINTAGE CLOTHING FOR ARTISTS, HEROES, AND LOVERS

3rd South and 8th East
Salt Lake City, Utah
801-521-3202
Monday - Saturday 11-7



THE ADVENTURE SPECIALISTS

Call us for a change of pace!

5635 S. WATERBURY WAY
SALT LAKE CITY 84121
801-278-4771

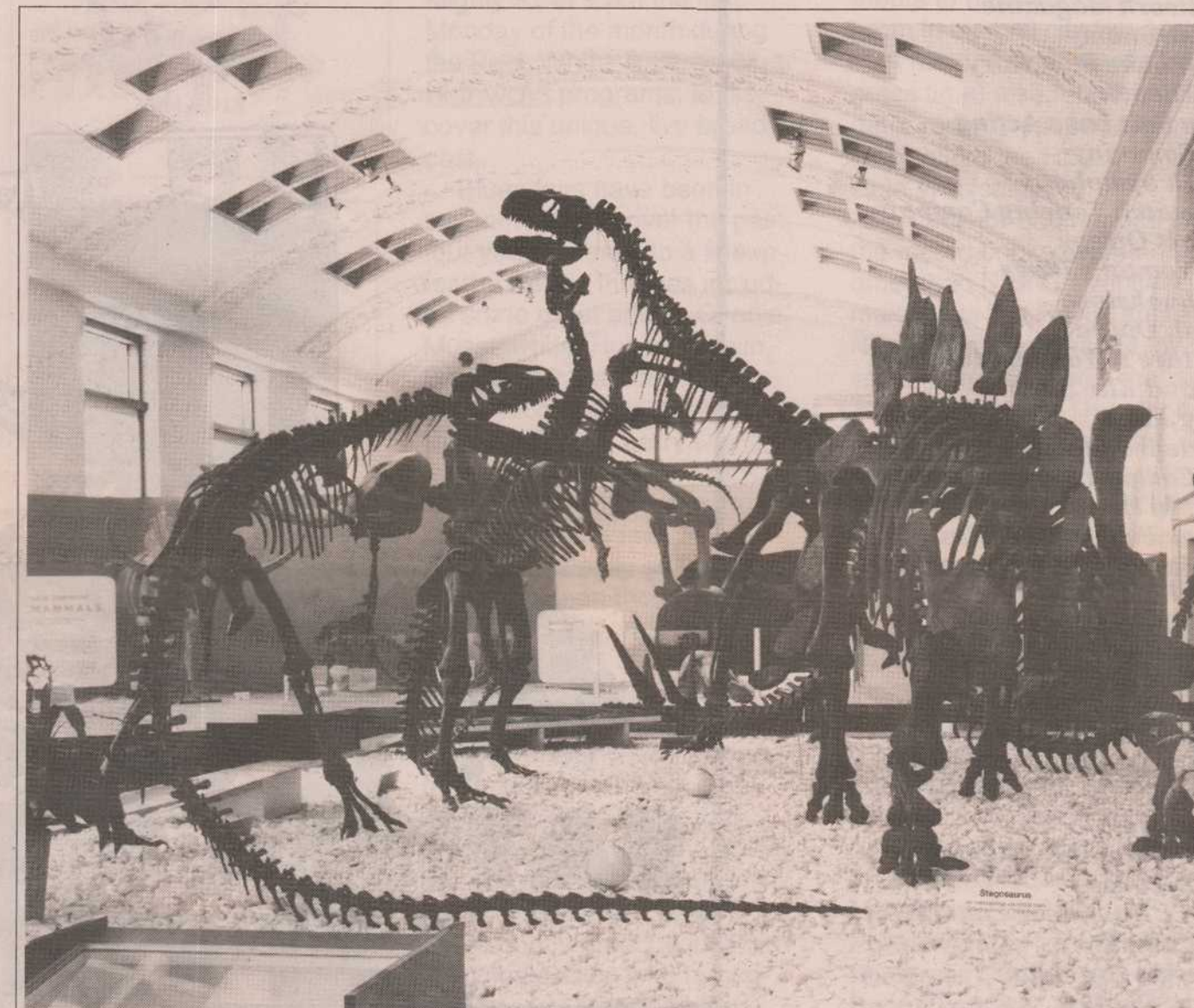


BACK to KRCL for the winter!

Ski Utah Report

Utah Avalanche Forecast

Café Rude or else 961 South State



Underwriter Spotlight

Natural History Museum educates Utah on natural and cultural history

The Utah Museum of Natural History is popular with KRCL listeners who are concerned about natural and cultural history issues.

KRCL is popular with the Museum as well, because of our culturally diverse audience.

The Museum chooses to underwrite KRCL programs because "we have a respon-

sibility to keep the public educated."

The Museum includes exhibits and presentations in Biology, Geology, Paleontology, and Anthropology. Field trips are arranged all over Utah for both adults and schoolchildren.

Special programs, like Science and Creativity Day and the Nature Photo Contest and

Exhibit are designed to get young people interested in natural history.

Hours are Monday through Saturday from 9:30 am to 5:30 pm. The Museum is also open 12 noon to 5 pm on Sundays and some holidays. Admission is \$2 for adults and \$1 for children. Call 581-4303 for more information.

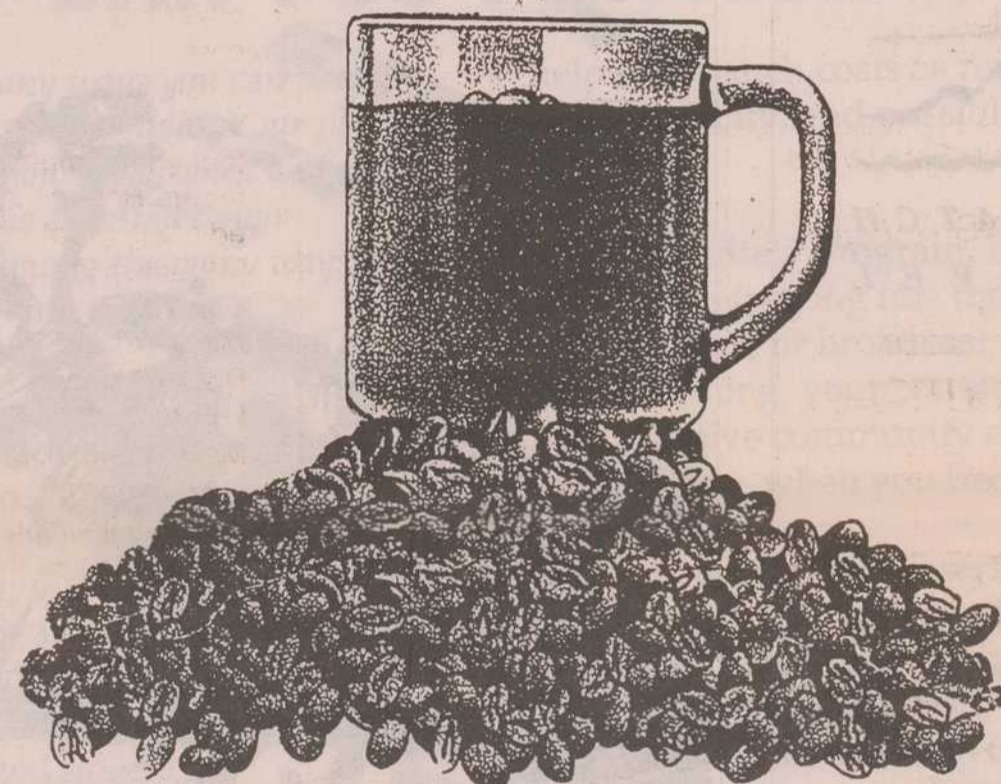
KRCL would like to thank the following for donating services and premiums during our very successful Fall 1991 Radiothon

Erik's Creative Dining
Chris Ackerson
Zahira
Utah Museum of Natural History
Rio Grande Cafe
Pioneer Theatre Company
TheatreWorks West
ec*lec*tic
Network Magazine
Gastronomy
Salt Lake Repertory Theater
The Salt Lake Acting Company
Utah Symphony
Wasatch Touring Company
Janet Owens
A Woman's Place
Bookstore
Utah Opera
Nature's Way Sandwich and Kite Shop
Fay Jones
Ririe-Woodbury Dance Company
Get In Here!
Peak Performance Inc., Japanese Car Repair
Junior's Tavern
Steve Inger/Gaia
Roly Caps
Tower Theatre
Rounder Records
White Buffalo Woman
Warner Brothers Records
Morgan Creek Records
Mango Records
Windham Hill/Highstreet Records
KRCL Volunteer Concert Committee
Maggie Harrison
Paul Doubek
Ann and Vic Heilweil
The Union Grill
Dave Eskelsen
JR Torina
The Space Agency
Park City Ski Area
Repertory Dance Theatre
The Monks of Doom
Dance Theatre Coalition

BROADEN YOUR CHOICES.
STIMULATE YOUR MIND AND SEE THE DIVERSE RICHNESS OF YOUR AREA WITH:
- events calendar - classes and seminars
- unique organizations - community services
- Resource Guide: crafts, arts, New Age, health, food & more...
the Winds of Change
a regional resource guide distributed in Utah, Idaho, Wyoming
15,000 circulation. For Free Copy,
P.O. Box 200 Roy, Utah 84067 - (801) 364-8608
Advertising/Subscription Distribution Plans Information Available

BREAKFAST JAM

SERVED DAILY FROM
6:00 TO 8:30 a.m.
Monday thru Friday

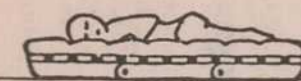


SATISFIES YOUR APPETITE

A RADIO SERIES

**SCIENCE LIVES:
WOMEN AND MINORITIES
IN THE SCIENCES**

every thursday at 8:30 am
on krcl 91fm
november and december



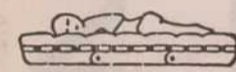
BLUE BOUTIQUE

2100 South 1100 East
S.L.C. UT.

485-2072

LINGERIE
SWIMWEAR
JEWELRY
INCENSE
TIE-DYE CLOTHING
CARDS
ADULT NOVELTYS
GIFTS
FUTONS & FRAMES
Environmentally Safe Wood

OPEN 7 DAYS A WEEK



BLUE BOUTIQUE



Where food is prepared with love

Delicious food
Affordable prices
Relaxed atmosphere
Vegetarian specialties

Now open for breakfast Mon-Fri!

7 AM - 10 PM Mon-Thurs
7 AM - 11 PM Friday
11 AM - 11 PM Saturday
5 PM - 10 PM Sunday

542 East 400 South
Salt Lake City, Utah 84102

364-4914



**Utah Museum
of
Natural History**

University of Utah
Salt Lake City, UT 84112



Happy Holidays from KRCL 91 fm
Your Community Radio Station

No static at all

Hearing live music on the radio is but one of the myriad pleasures community station KRCL Radio brings to its legions of listeners.

For those unaware of the weekly *Blue Devils Blues Revue* at the remodeled Dead Goat Saloon each Monday, all it takes is tuning the dial to the Mighty 91 at 9 pm the last Monday of the month during the *Red, White & Blues/Blue Highways* programs, to discover this unique, live broadcast.

Blues fans have been in seventh heaven over the past four years, thanks to a lineup for the Revue that has included some great artists: Charlie Musselwhite, Hubert Sumlin, Earl Tucker, James Harman, Mitch Woods, Earl "Good Rockin'" Brown, Larry Davis, Luther Tucker, Terry Hanck, Mark Hummel, and Jan Fannuci, to name a few.

When it simply got too good to just listen on the radio, those who had cruised in the Goat to be part of the live action were rewarded with the surprise jamming of several fine players who had dropped down to join in the fun after their own concerts around town, from Los Lobos and Eddie Shaw to Paul Gilbert and the Nitty Gritty Dirt Band!

October's broadcast continued the tradition with the appearance of Coco Montoya (known for his hot playing as part guitarist Rick Welter (who is responsible for conceiving and developing the Blue Devils Blues Revue) and his cohort from the Tempo Timers-Mike Ricks, Craig Goodell, and Rick Anderson (collectively known as the Blue Devils Blues Revue) and his cohort from the Tempo Timers, Mike Ricks, Craig Goodell, and Rick Anderson (collectively known as the Blue Devils in this incarnation), provided the first-rate backing for Montoya's fiery guitar work to a standing-room-only crowd.

The roots of the radio broadcast go all the way back to Helena, Arkansas, when Sonny Boy Williamson could be heard on the King Biscuit Flour Hour. The idea has had success across the country in the big-time locales of New York, Los Angeles, and San Francisco, but it is indeed a tribute to have such a hot program in a small city like ours.

A rumor (unsubstantiated at press time) also has it that Alligator records out of Chicago is looking into the Revue for possible syndication.

Look for another one for the record books when none other than Nick Gravenites makes it to the Revue stage in November. Last seen in town some years back with the late John Cippolina in Thunder and Lightning, Gravenites has made his mark working with so many big names like Michael Bloomfield, Paul Butterfield, and Al Kooper (remember the Electric Flag?)

Breaking ground in another musical genre, KRCL will also broadcast the feature edition of the Goat Grass (?) bluegrass jam each month, also at the Goat. The new, weekly series, which begins at 6 pm and runs until 10 pm each Sunday, has showcased award-winner Matt Flinner and his band Powder Ridge, as well as the Bluegrass Conspiracy (with Bangs Tapscott, who also is coordinating the program's lineup).

Southfork, a popular band from Idaho, will kick things off on Sunday, November 24, to inaugurate the live broadcast. The performance will air during the last hour of the *Bluegrass Express* show at 4 pm, and will continue until 8 pm.

WEEKLY SCHEDULE

91 FM KRCL

SUNDAY		MONDAY	TUESDAY	WEDNESDAY	THURSDAY	FRIDAY	SATURDAY
	6	BREAKFAST JAM					
	7	<i>Acoustic, Folk, New Age, Jazz, Rock</i>					
NATIVE AMERICAN	8	PUBLIC AFFAIRS					ASIAN
	9	FOLK AND WOMEN'S				S O U L	
FOLK & COUNTRY ROCK	10	<i>READING</i>					
	11	PUBLIC AFFAIRS					
	12	GLOBAL GUMBO NEW DIMENSIONS					
BLUEGRASS	1	<i>Music From Around the World</i>					R O C K & R O L L
	2	DRIVE TIME					
COWBOY COMEDY TRADITIONAL FOLK	3	<i>Rock, Jazz, R & B, Reggae, Folk</i>					REGGAE
	4	PACIFICA NEWS					
	5	MONTAGE — <i>Ethnic Music</i>		LISTENERS AS GUEST HOSTS		RAP	
NEW DIMENSIONS NEW AGE & ELECTRONIC	6	B L U E S	M O D E R N	R E G G A E	R O C K & R O L L	F U N K & R O C K	PUNK AND HARDCORE
	7	LATE NIGHT					
LATE NIGHT	8	<i>Free Form Mix . . . Late Night Creations</i>					LATE NIGHT
	9						
	10						
	11						
	12						
	1						
	2						
	3						
	4						
	5						
	6						