



Salt Lake City, Utah

WEEKLY SCHEDULE 91 FM KRCL

SUNDAY	MONDAY	TUESDAY	WEDNESDAY	THURSDAY	FRIDAY	SATURDAY
	BREAKFAST JAM <i>Acoustic, Folk, New Age, Jazz, Rock</i>					
	PUBLIC AFFAIRS					
NATIVE AMERICAN	FOLK AND WOMEN'S			SOUL		ASIAN
FOLK & COUNTRY ROCK	READINGS PUBLIC AFFAIRS					ROCK & ROLL
BLUEGRASS	GLOBAL GUMBO <small>NEW DIMENSIONS</small> <i>Music From Around the World</i>			SOUL		
COWBOY COMEDY TRADITIONAL FOLK	DRIVE TIME <i>Rock, Jazz, R & B, Reggae, Folk</i>					REGGAE
NEW DIMENSIONS	PACIFICA NEWS					
NEW AGE & ELECTRONIC	MONTAGE — <i>Ethnic Music</i>		LISTENERS AS GUEST HOSTS			PUNK AND HARDCORE
	BLUES	MODERN	REGGAE	ROCK & ROLL	RAP & ROCK	
LATE NIGHT	LATE NIGHT <i>Free Form Mus. . . . Late Night Creations</i>					LATE NIGHT

91FM KRCL

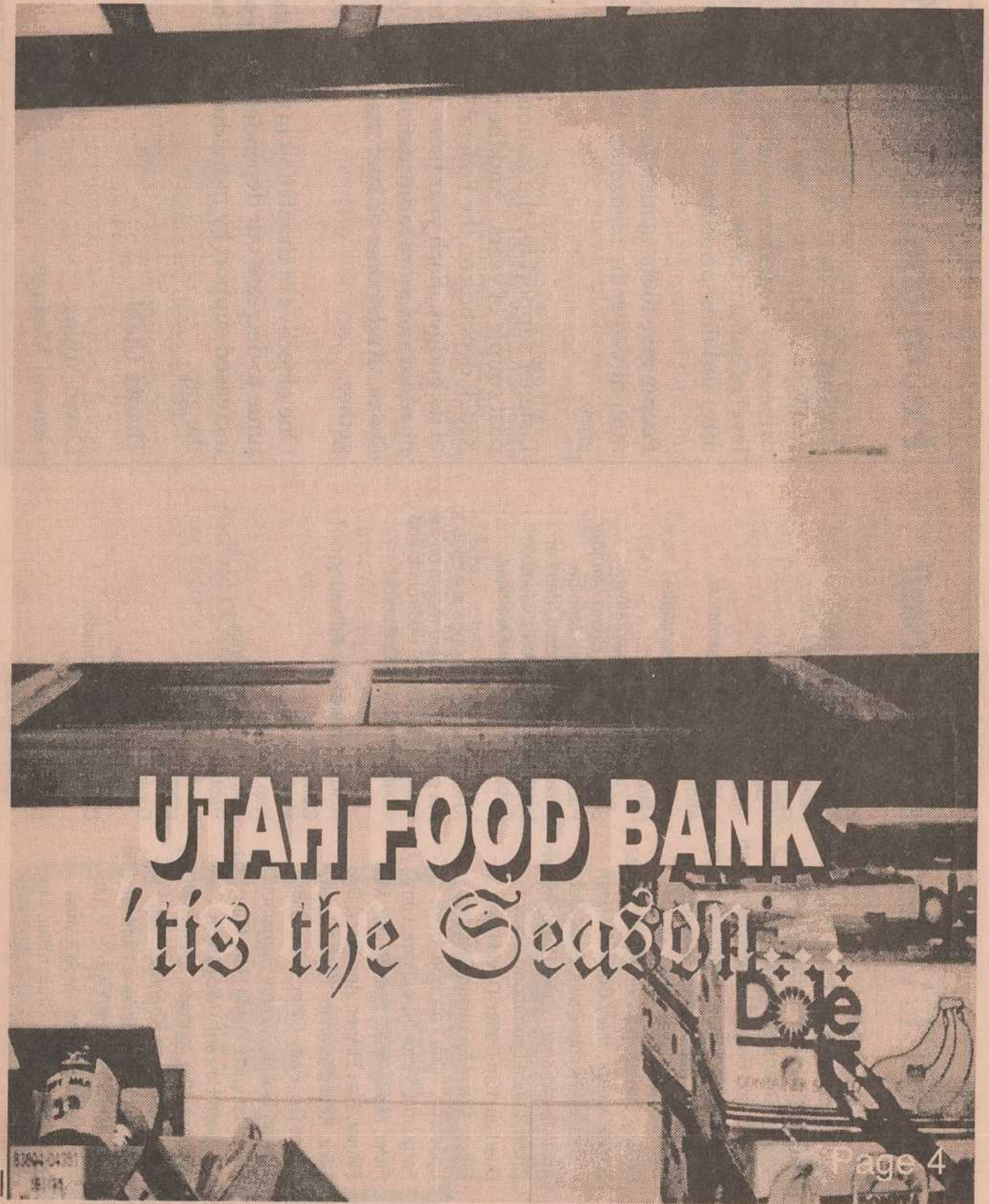
208 West 800 South
Salt Lake City, Utah 84101
Phone (801) 363-1818

Non-Profit Organization
U.S. Postage
PAID
Salt Lake City, Utah
Permit Number 3973

Please notify us of any change of name or address.
The Post Office will not forward the Program Guide.



PROGRAM GUIDE • SALT LAKE CITY, UTAH • NOV/DEC 1992



KRCL Volunteers, Board, Staff

KRCL Volunteers

Eric Anderson, Bryan Baker, Rob Baker, Brad Barker, Brian Barkey, Chuck Bradley, Deena Brazy, Dan Benaducci, Thu Bo, Jon Bray, Scott Bringard, Keith Browning, Jodi Stewart-Browning, Earl Burnett III, Mark Cantor, Rebecca Chavez-Houk, Alan Chow, Mike Christy, Jonathan Cloud, Brad Collins, Steve Connor, Mary Cranney, Brian Crowder, Cynthia Davis, Babs DeLay, Anjali Deshpande, Carol Dixon, Marvin Dixon, Lance Drummond, Patty Duerkop, Kim Duffin, David Dyer, Jim Elder, Diana Epperson, Steve Epperson, Nilsa Feliciano, Heidi Ferguson, Victor Fernandez, Larry Ficks, Nancy Fillat, Bob Flinner, Matt Flinner, Rex Flinner, Ann Floor, Doc Floor, Kevin Florendo, Tami Fraser, Grace Ge, Patty Giffin, Chris Gittins, Stewart Gollan, Jimmy Hamamoto, Mark Hampton, David Hart, Marc Hoenig, Scott Howard, Mic Huerta, Carlie Jimenez, Kim Johnson, Glenn Keister, Brian Kelm, Uma Khandkar, Jeff Kimball, Paul Kohl, Marlene Lambert, Phil Lanouette, Deborah Levine, Y. Lin, Abby Maestes, Lisa Mace, Lynne McCue-Hamilton, Craig Miller, Maureen Mooney, Richard Moore, Mike Moran, Joseph Mortalla, Becky Moss, Robert Nelson, Les Nilsson, Charlene Orchard, Max Packineau, Doug Parkin, John Phillips, Tony Polychronis, Linda Reeder, John Reese, Nini Rich, Kay Robinson, John Rokich, Lisa Romano, Deborah Rosenberg, Gerry Runyan, Jeff Salt, Dave Santivasi, John Schellinger, Jerry Schmidt, Steve Seftel, Dave Seiger, Ellen Selu, Wayne Selu, Sally Shaum, Perry Shepard, John Shilaos, Cathy Siegal, Myron Simon, Mary Simper, Robin Simper, Sam Smith, Victoria Smith, Rick Stayner, Ken Sullivan, Danny Tapeta, Bruce Thomas, Chris Thompson, Gary Timm, JR Torina, David Turner, Joel Uluakiola, Matthew Wallace, Bob Walter, Beth Weech, Ben Williams, Jo Wilson, Truman Wold.

Board of Trustees

Howard Lundgren, *Chair*
Kathryn Kendall, *Vice Chair*
Frances Pruy, *Secretary/Treasurer*
Jimmy Hamamoto, *Volunteer Representative*
Abby Maestas, *Volunteer Representative*
Marc Hoenig, *Volunteer Representative*
Stephen Holbrook, *Board Member*
Paul Wharton, *Board Member*
Joseph Sanders, *Board Member*
Leticia Archuleta, *Board Member*
Robert Flores, *Board Member*

KRCL's Board meetings are open to the public. The Board meets on the second Thursday of odd-numbered months at the KRCL studios.

KRCL Community Advisory Committee

Maria Garcias
Nap Hagood
JoAnn Wong Kilpatrick
Debbie Rocha

KRCL Staff

David Young, *General Manager*
Donna Land Maldonado, *Program Director*
Lewis Downey, *Chief Engineer*
Paula Rokich, *Business Manager*
Ken Pavia, *Music Director*
Jay Bundy, *Development Director*
Tristin Tabish, *Administrative Assistant*

Program Guide Staff

Jay Bundy, *Editor*
Michelle Entwistle, Kristen MacLean Gould, Ken Pavia, *Contributing Writers*
Mike Moran, *Distribution*
Dorothy Young, *Direct Mail*
Tooele Transcript-Bulletin, *Printing*

Michelle Entwistle, John Schellinger, Jerry Schmidt, *Underwriting Representatives*



The Program Guide is published bi-monthly by Listeners Community Radio of Utah, Inc., a non-profit corporation. Unsolicited submissions are welcomed but cannot be returned. The editor reserves the right to edit any manuscripts to conform to standards in accordance with KRCL policy. All letters, manuscripts, photos or artwork should be sent attn: Editor, KRCL Program Guide, 208 West 800 South, Salt Lake City, Utah, 84101. Opinions expressed are not necessarily those of KRCL's volunteers, staff or Board of Trustees.
Deadlines for the January/February 1993 issue are: December 11- letters and manuscripts; December 14- advertising space reservations; December 16- camera ready artwork.

From the Station Manager...

Another Radiothon has come and gone. Thanks to everyone who pitched in to make this our most successful pledge drive ever. Together we raised \$80,359. WOW! That high level of support says a lot about the people of this community, and their priorities.

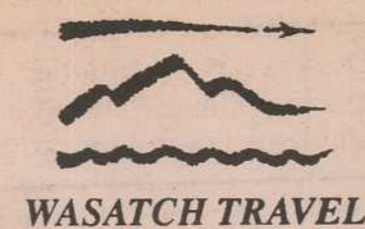
People give to the station for all kinds of reasons. A common thread is the realization that KRCL does make a difference.

Listener support for the station has grown steadily over the past couple of years. And the timing couldn't be better. KRCL depends on the Federal Government for roughly 25% of its budget. Each year those funds are being divided up by more and more radio stations throughout the United States. And sooner or later that money will be gone altogether.

One objective of the station to ensure its longevity is to continue to decrease our dependence on Federal monies. The increased support by individuals and businesses is filling in the gap.

Thanks Utah!

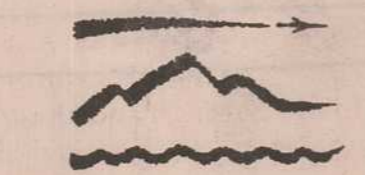
David Young
General Manager



WASATCH TRAVEL

THE
ADVENTURE
SPECIALISTS

5635 S. WATERBURY WAY
SALT LAKE CITY 84121
801-278-4771



FERTILE
GROUND

Earth Wisdom and
Sacred Ways

Books, Clothing, Gifts,
Gallery, Jewelry,
Teaching Center

Unique Gifts
Affordable Prices

274 East 900 South
521-8124



T P Gallery

SPECIALIZING IN INDIAN ART
252 South Main
Salt Lake City
364-2961

Letters to KRCL

KRCL welcomes comments and opinions from its listeners and will print all signed letters. KRCL reserves the right to edit offensive or inappropriate language.

Dear Mr. Young:

We were so happy to have you all come out on September 16 at the fair. Unfortunately, our mutual friend, Miguel Reyes, had trouble getting in the gate that night. Miguel is a very prompt individual, and I knew there was something wrong. I do believe, however, that the program went well with the interviews and some of the music from "Los Versatiles." Next year will be better.

I would personally like to thank Rebecca, Lewis, Jay, Donna and all those who came out on that day.

Thank you again and let's keep in touch.

Sincerely,
Viola Ramos
Editor
Utah Hispanic Magazine

Dear Donna,

We greatly appreciated your support and efforts during the week of Darryl Cherney's concert, especially the interview and the airtime for his music. The concert last month was a fantastic success, much thanks to KRCL and you! Many folks came because they heard the interview, the music and the PSA's on KRCL.

Thank you for making KRCL the forum for our community!

Sue Rering
Wild Utah Earth First!

Station Manager:

I have been listening to your station for about 8 or 9 years, and I have enjoyed the music and the information that you present. I specifically like the folk music shows like Sunday Sagebrush, Fret 'n Fiddle, Touch the Earth and Le Cafe Folk. Last month or so I quit listening to Touch the Earth.

The person that plays the music would not know folk music if it ran over him. Kelly Kramer, who I think started the show, would play great shows, and when Perry took over he got weird at times but would generally play great folk music old and new. The new guy should be on Circle of Life or Nexus and not a folk show. Please be aware that I'm not telling you what to do but what I and most of my friends feel about the Monday 9:00 to 12:00 slot that is not folk music. Thanks for reading this, and I hope you understand my concerns.

Sincerely yours,
Harold K. Mattisson

Dear KRCL,

Thanks for doing such a great job. I'm enclosing a check for the first monthly installment. As soon as I find a job I'll send in whatever balance is left.

Here's my story. I was one of those selfish people, full of good intentions, always listening to KRCL and saying "I've got to send my contribution" but never following through. Then I left Utah and moved to Wyoming - a musical wasteland. For five years I listened to music I had acquired after discovering it on KRCL, which made life bearable, but there was still a big gap. No *Pacific News*, *Consider the Alternatives*, or *On Common Ground* to mention a few. And I wasn't keeping up on new musicians. I never appreciated just how unique and special KRCL is until I didn't have it anymore. Even when I left Wyoming and went to South Florida I couldn't find the variety and diversity I'd had with KRCL. And the stations I did find that played some of the type of music I enjoyed blasted me with commercials or insulted me with trite banter. Oh how I missed KRCL.

After seven years away, I am grateful for the opportunity to follow through and show my support. KRCL, you are

my lifeline. Please, keep it up.

Thanks so much,
Patty Canner

P.S. Please send me a Program Guide.

Dear KRCL and Donna Land,

Here is a donation. It's all I can afford right now. Please use it to keep National Native News from Alaska on the air. I am a longtime Circle of Life listener. I have been listening to KRCL ever since their headquarters was in the Blue Mouse Theater building. Here's to longevity and the Circle of Life, The Sacred Hoop, the Ute Bear Dance Song, etc.

See ya
Richard G. Anderson
(see Letters, cont. page 15)

Kismet (801) 486 7780
Boutique

- Drums
- Belly Dance Music
- Imported Scarves
- Hand Crafted Jewelry
- Original Art
- Incense

Register for
Belly Dance Classes!

1307 S 900 E, Salt Lake City
Tues-Friday, noon-6 p.m.
Sat 7am-5

Circle Pottery

Studio • Gallery • Classes

Classes
mid

starting November

Fine Quality Stoneware
Hand-made On-site
By Don MacDonald
232 East 800 South, SLC
596-1350

J.R. BESS MUSIC ARTS GALLERY

Import CD's - Cassettes
Rare Vinyl Recordings
Original Showcards
Poster Art - T-Shirts
Alchemy Jewelry
and soon to come
Boots And Shoes from Marley's of London

Hours
Mon - Fri: 11am - 9pm
Sat: 11am - 7pm
Closed Sunday's

(801) 269-8338

4700 s. 900 e. #28 - Ivy Place
S.L.C., Ut 84117

Special Orders Welcome

BANANA BOXES, "BRIGHTS" & HERSHEY'S KISSES: THE GLUE THAT KEEPS THE UTAH FOOD BANK TOGETHER

by Kristen MacLean Gould

What would you call a semi tractor trailer load of fresh oranges spilled all over the highway? A mess? A traffic jam? Dick Winters called it a blessing for Utah's hungry. "I remember the day they rolled that truckload of oranges on the freeway. There were case after case of oranges; they hit hard enough to rupture so they were all sticky and couldn't be sold. We got out there and grabbed 'em for the food bank. You don't get fresh oranges every day!"

Dick Winters has been executive director of the Community Services Council for 4 years after having served 6 years on their board of directors. The Community Services Council is a private, non profit organization that has six separate programs including the Utah Food Bank. Funding for the programs comes from the United Way, private contributions and some government funds. Winters is a master of a complicated and challenging jigsaw puzzle. He spends his days fitting together the many different sized and colored pieces of identifying food needs in the community, coordinating volunteers, food collection, food distribution, and finding food and funding from whatever sources he can.

The Utah Food Bank collected and distributed over 4 million pounds of food in Utah last year. Salt Lake City is a hub for distributing food but the Food Bank distributes food to all of Utah and also provides a support service for emergency food as far east as Rock Springs, Wyoming, southern Idaho, and west to Elko, Nevada. "Carbon County called one day and were so desperate for food and all they had were dump trucks from the town and that's what they sent. They drove the dump trucks down and we loaded them up with whatever food we could and off they went!" says Winters.

The primary distribution focus of the Utah Food Bank are the roughly 45 food pantries in Utah. There are approximately 18 food pantries in the greater Salt Lake area including some of the well known pantries such as Cross-Roads Urban Center and St. The-

rese/St. Joseph as well as 28 others throughout the state. "What we're doing with the food bank is emergencies. In some instances it can get to be kind of a sustaining program, but we don't want it to be if we can help it. We like to make sure people are accessing resources that they're eligible for." Patrons of the Utah Food Bank are asked to submit basic information about themselves at the time of redemption so that the food bank can identify why these people are in need. The food bank wants to know the collector's name and address, why they're experiencing an emergency and whether they are accessing any of the resources that are available to them. Winters explains that some of the families or individuals may be eligible for programs they weren't aware of.

Dick Winters speaks like someone thinking aloud while he puts together the jigsaw puzzle: slowly, he speaks, pondering each corner, each angle of the piece, stepping back and considering the big picture coming together, taking his time. According to Winters, for the last two years the Utah Food Bank has experienced a 25% increase in demand each year for food. "So that's a 50% increase in the demand for food for emergency use and that's scary," says Winters. Why the increase? Winters speculates, "It's the economy, the number of minimum wage jobs in Utah; a lot of these people run out of resources before the end of the month so this puts them in an emergency situation." Winters states that the food pantries service an entire cross section of people: men, women, families, individuals. "It really runs the whole gamut," he says.

Winters shows me an intricate organizational chart showing where the food comes from and where it goes. As Winters says, "We get food from just about any source we can get it." Sources for the Utah Food Bank include donations from local grocery stores such as day old breads and pastries, farmer's surplus such as the Idaho farmer who sends his odd sized potatoes each year, dairy products from dairy corporations, truckers damage (like the oranges), fruit growers surpluses,

hospital surpluses, garden projects such as those popular at many local prisons and even leftover food from Desert Storm in the Persian Gulf.

Damaged goods from local grocery chains also constitute a large portion of food to the Food Bank. "We have a damaged products program going with various supermarkets," says Winters, "ba-



Dick Winters, executive director, Utah Food Bank

sically, there's a certain amount of product that's damaged in shipping and it won't sell, like a dented can on a grocery store shelf, but the food is perfectly good. Most of the manufacturers will give the stores a refund for damaged product and the store donates the food to us."

Corporate sponsors are also a huge help to the Utah Food Bank. Winters gave the example of a new program at Smith's called "Milk for Kids". Started just this September, consumers can purchase an "extra" gallon of milk while they're shopping and the extra gallon will be donated to the Utah Food Bank. Smith's also then donates .30 a gallon back to the Food Bank.

The Utah Food Bank is also the beneficiary of the annual holiday time Boy Scout Food Drive. "The Boy Scout Drive is the biggest one of the year," says Winters, "On one Saturday they deliver a bag to people's homes and then they go out the next Saturday and pick them up full. On that Saturday last they picked up over 400,000 pounds of food! It took 35 trucks and 100 personnel from the National Guard chasing most of the day to pick it all up at

the 28 collection points around the valley. It's the best and worst day of our lives!"

One of Winter's "sweetest" stories about food donations: "A while back Hershey's introduced 'Hershey's Kisses with Almonds' and man, the warehouse up here loaded up with Kisses with Almonds. Well, with that little almond in there the 'shelf life' was changed. The chocolate will last longer than the nut will, so all of the stores were coming up to date on this stuff and couldn't sell it so we received almost 100,000 pounds of Hershey's almond kisses!. Just pallet after pallet of these kisses showed up and I went out and looked at this candy piled up out there and I was thinking of nutrition and I let it spill out. Out of my mouth came this exclamation, 'what on earth am I going to do with all this candy?'" A driver who delivers to the food pantries was with in earshot and I heard this piercing little voice with a spanish accent say, 'Poor people like candy.' So we just sent the candy on with the rest of it and it was received very well!"

Winters organizational chart shows how all of the collected food is distributed to the various food pantries and shelters. Then, on this very professional looking chart there's a big box labeled "Pig Man." In the end, any food not suitable for human consumption goes to animal shelters, the garbage, or...the pig man. A local pig farmer!

Another piece of the puzzle for the Utah Food Bank: labor. "We get labor from any place we can too. It's a very labor intensive operation. I'm looking at almost 4 million pounds of food a year to distribute and I do it with... I think there are 5 paid staff and the rest of it is labor we get from a variety of sources. We have some volunteers who I just treat like staff; some of them are here every day. We've got a fellow who does a bread run for us every single day and he's great. We get a lot of court imposed community service people. We get senior citizen volunteers, LDS church service missionaries, youth groups, boyscout troops, emergency work program per-

(cont. on page 12)



COLOR Copies \$1.50!

Also Available:

- | | |
|---------------------|-------------------------|
| Four Color Printing | Embossing |
| Typesetting | Camera Reproductions |
| Binding | Rubber Stamps |
| Padding | Fax Service |
| Laminating | Personalized Service |
| NCR Forms | Free Pick Up & Delivery |

Quick & Quality Printing At Competitive Prices

484-3429 Fax: 484-1681

252 West 1300 South Parking In Rear

the dot

the line

When all printers work with the same set of givens, what makes one stand out and prosper over another?

Consistency in price and quality.



INTERMOUNTAIN LITHO PRINTING

We are a small business offering personalized service and full attention to detail. We take pride in what we do.

4030 SOUTH 500 WEST • 262-1743

FOOTHILL
ORIENTAL RUGS

1464 Foothill Drive
Salt Lake City, Utah 84108
(801) 582-3500

BROADEN YOUR CHOICES.
STIMULATE YOUR MIND AND SEE THE DIVERSE RICHNESS OF YOUR AREA WITH:
• events calendar • classes and seminars
• unique organizations • community services
• Resource Guide: crafts, arts, New Age, health, food & more...
the Winds of Change

a regional resource guide distributed in Utah, Idaho, Wyoming
15,000 circulation. For Free Copy:
P.O. Box 200 Roy, Utah 84067 • (801) 394-9655
Advertising-Subscription-Distribution Points Information Available



FURNISHINGS

Achieving first class chic at second hand prices.

ELEMENTE will change the way you look and feel about used furniture.

Finding yourself on Pierpont Ave. (250 So. between 3rd & 4th West), is a charming experience in itself. Entering the shop offers a welcoming gaze at the familiar and an exciting detour as local artists and crafts-people lead you to the cutting edge of present tense design.

ELEMENTE can buy or accept consignment furniture and accessories, introduce you to Art, Furniture, Heavy Metal and the Magic Mix or just invite you to discover your own personal style.

ELEMENTE—a setting combining the shapes and patterns of yesteryear, with the imagination of today.

353 W. Pierpont (250 S.) Salt Lake City, Utah 355-7400
Open Mon.-Fri., 10 a.m. to 6 p.m./Sat. 12 p.m.-5 p.m.



C&C
CLEAN & CLASSY
Carpet Cleaning

24 HOUR FLOOD & WATER DAMAGE
EMERGENCY SERVICE
JANITORIAL SERVICES - FREE ESTIMATES

CLYDE CHARLES
PAM DAVID
566-7576

C&C
CLEAN & CLASSY
Carpet Cleaning

9x10.....	\$10.80
14x16.....	\$26.88
20x20.....	\$48.00
10x10.....	\$12.00
12x12.....	\$17.28
12x11.....	\$15.84
8x8.....	\$10.56
14x25.....	\$42.00
9x9.....	\$11.88

566 7576

THE
Salt Lake
Roasting
Co. & Café
320 East 400 South Salt Lake City

New & Used • LPs • Tapes • CDs

GET IN HERE!

562 Main Street • Park City • 1-649-1141

GET IN HERE!



878 East 900 South

Out of Print • Alternative Rock

Jazz • Blues • Reggae • Zydeco

Imports • Modern Music • Hardcore • Folk

Comments and Opinions

Comments & Opinions of the Program Director
Donna Land Maldonado

... 'tis the season. Please take the time to read the article on the food pantries. Every child, every person is worthy of our time and efforts; hunger and poverty does not discriminate in color, education or age. Intentions are a start, the next step is to take action: pick up an extra bag of beans or rice, purchase milk vouchers at any Smith's which will in turn be given to the food bank to be redeemed for fresh milk; talk to your representative - neighborhood or state - about the lack of affordable housing, about the lack of health care for everyone; a letter carries even more weight to city, county or state officials. The environmental movement must pertain to ALL species, including humans. We all play an important part in the entire process of life - there are no expendable strands in the web of life, there is no separation in the relationship of all living things on earth - without one another we will perish. During this season of rest take a moment to share with someone less fortunate and have some peaceful moments to yourself.

See you next year.
Respectfully,

Donna

Public Affairs

SUNDAY

6:30 am

Morning Light

"Crossroads" - Achievements, issues and stories presented from a culturally different perspective.

8:30 am

National Native News

Headlines and stories from Indian Country. Produced by the Alaska Public Radio News Service.

5:00 pm

Riders Radio Theater

New age cowpoke humor, zani-ness and cowboy music by Riders in the Sky.

7:00 pm

New Dimensions

A timeless and relevant interview series particularly well suited for the "inner directed" audience. Intelligent, thoughtful and engaging. Hosted by Michael Toms. Repeated Thursday at 1 pm. Number at end of description is the program order number. Phone number and/or address of New Dimensions is listed with other distributors elsewhere in the Guide.

November 1: *Listening in the Age of Media Misinformation* with Norman Soloman. Television news is produced by only a few major companies with their own political agendas and government ties, severely restricting what we are allowed to hear about world events. #2303

November 8: *Deep Democracy: Dreambody Politics* with Arnold Mindell, who defines his concept of deep democracy as a matter of inner and group development, compassion and awareness. The need to reclaim those disavowed aspects of ourselves and the world. #2318

November 15: *An Hour with the Raging Grannies* with Inger Kronseth, Mary Rose and Patricia Waters. You are never too old for political activism and the Raging Grannies of Canada are living, singing, kayaking proof. They target

nuclear ships, uranium mining, poverty, war toys and environmental issues with bold creativeness. #2304

November 22: *Sanity Through Ecopsychology* with Theodore Roszak, one of the most fertile minds and prolific authors of the century discusses his latest thoughts on psychology and ecology. He stresses the need to develop a healthy relationship, not only with one another but with the earth itself. #2334

November 29: *Creating a New American Dream* with Beth Jarman and George Land; who advises to appreciate what appears to be social chaos as a challenging shift charged with possibilities. #2312

December 6: *Love is Connecting* with Susan Jeffers. In an empowering interview, Jeffers speaks about building self-esteem, working in partnership, not competition, and reaching out to others in all areas of our lives. #2320

December 13: *Money For Good* with Alan Reder who explains how to make it speak for your values and beliefs, no matter how much or how little you have to invest. Supporting ethical beliefs thereby helping to create a better world. #2323

December 20: *The Art of Soulful Living* with Thomas More, who describes the soul as the best part of us that wants a rich, full experience of everyday life. #2331

December 27: *Buffalo Woman's Spirit* with Brooke Medicine Eagle, who shares her own personal story of lessons, disappointments and realizations. Her life work has been bringing spiritual awareness to the modern world. #2308

MONDAY

8:30 am

Morning Light

12:00 pm

Reading

Short stories, novels or essays read by a variety of readers

from a variety of sources.

12:30 pm

Our Arts

Interviews with local or visiting artists. Produced by alternating hosts: Kim Duffin, Diana & Steve Epperson, Heidi Ferguson and Mary Cranney.

November 2: The Kennedy Center recently opened a play by Taylorsville High School student Jane Lynn Reese, which focuses on her relationship with a handicapped family member. Reese discusses her work with Steve.

November 9: Heidi interviews Sarah Garden Armstrong, a New York sculptor visiting Salt Lake as guest of a Contemporary Arts Group forum at the University of Utah.

November 16: Representatives from Repertory Dance Theater and Ririe/Woodbury Dance Company present new works as each begin the 1992-93 season of performances at the Capital Theater. Kim hosts.

November 23: Filmmaker Ann Kochehan's recently completed anthropological film short shot in Sudan will be the focus of this week's "Our Arts" with Mary Cranney.

November 30: With the 1992 holiday season upon us, Kim will host the annual overview of exhibitions featuring local and craftspeople's works available for gift giving.

December 7: Utah Opera will present three performances of Hansel and Gretel, double-casting each character with a "sign-actor" ("shadow-interpreting") for both hearing and non-hearing audiences. Heidi hosts.

December 14: Mary and Casey Williams from the Utah Film and Video Center will talk about screenwriting with Andy Levine, a screenwriter who has been working with producer Norman Lear.

December 21: Steve Roens, University of Utah assistant professor of music and composition is Steve Epperson's guest this week.

Schedule

December 28: To be announced. Heidi hosts.

6:30 pm

Pacifica News

National and international news from an alternative point of view. Produced by the National Pacifica News Dept.

TUESDAY

8:30 am

Morning Light

First Tuesday of each month is W.I.N.G.S., Women's International News Gathering Service. November will feature conversations with social justice movers - women who have made/continue to make a difference of putting into reality the credo of the United States - "and justice for all." To include: Linda Burningham, director of Women of Color Resource Center in Berkeley; Sharon Delugach, director of Jobs With Peace, L.A. District; Prina Tobin, founder of Children's Self-Help Program in San Francisco; and Marcy Whitebook, director of Worthy Wages, a national organization based in San Francisco.

12 Noon

Reading

A half hour of readings.

12:30 pm

People's Business

Discussions on community and social concerns. Hosted by Robin Simper.

6:30 pm

Pacifica News

In depth news reports of an alternative nature.

WEDNESDAY

8:30 am

Morning Light

"Common Ground." Produced by the Stanley Foundation. Global events and topics dis-

cussed by decision makers and observers of the topic at hand.

12 noon

Reading

Readings for your lunch hour.

12:30 pm

Concerning Gays And Lesbians

Information, news and interviews from Utah's gay and lesbian population.

6:30 pm

Pacifica News

National and international news.

THURSDAY

8:30 am

Morning Light

Public Affairs in the third degree. "Counterspin" produced by FAIR, Fairness and Accuracy In Reporting, the national media watch group based in New York, who will critique mainstream media coverage of a wide range of issues, controversies and current events. Hosted by Laura Flanders and Martin A. Lee.

12:00 noon

Reading

Various readings from various material.

12:30

Lunch Encounter

November 5: MUSEUM NOTES with host Marlene Lambert, who explores the natural world with various guests.

November 12: UTAH ISSUES, with Bill Walsh who focuses on the social concerns of Utah.

November 19: SENIOR SOUND OFF with host David Turner who talks with and about the older population.

November 26: ISSUES & EXPLORATIONS: live conversations about contemporary Mormonism. Hosted by Steve Epperson.

December 3: MUSEUM NOTES with Marlene Lambert.

December 10: UTAH ISSUES with Bill Walsh.

December 17: SENIOR SOUND OFF with David Turner.
December 24: ISSUES & EXPLORATIONS with Steve Epperson.

1:00 pm

New Dimensions

See Sunday 7 pm for schedule.

6:30 pm

Pacifica News

In depth, alternative.

FRIDAY

8:30 am

Morning Light

"Crossroads" a weekly magazine that highlights people-of-color in their achievements and issues of concern to them. Toucan productions.

12 noon

Reading

Stories, folk-tales etc.

12:30 pm

La Voz De La Gente

Guests talk with Abby Trujillo Maestas and/or Rebecca Chavez-Houck about the topics of advocacy, service, information, political and cultural concerns...of, for and about Utah's Hispanic population.

6:30 pm

Pacifica News

An in-depth news report on headlines and real stories.

Short Features

Monday

7:30 am Arboretum Report

Tuesday

11:00 am Women's News

5:00 pm Throat Culture

5:30 pm Environmental Update

Wednesday

10:30 am Terra Infirma

12:55 pm Because We're Here

5:00 pm Utah Wilderness Update

Thursday

10:30 am Women's News

11:30 am Because We're Here

5:00 pm Southern Utah Wilderness Alliance Update

Saturday

10:00 am Throat Culture

11:00 am Environmental Update

Sunday

12:00 pm Southern Utah Wilderness Alliance Update

3:00 pm Utah Wilderness Update

9:00 pm Terra Infirma

StarDate airs daily at 5:30 pm and 10:00 pm

Earth and Sky airs Monday thru Friday at 7 am

Letters to the Editor follows *Pacifica News* Monday-Friday, at approximately 6:58 pm

TRAFFIC REPORT M-F during Breakfast Jam.



Where food is prepared with love

Delicious food
Affordable prices
Relaxed atmosphere
Vegetarian specialties
Espresso • Cappuccino

Hours:

11 am-10 pm, Monday-Thursday
11 am-11 pm, Friday & Saturday
5-10 pm, Sunday

542 East 400 South
Salt Lake City, Utah 84102

364-4914



Mountain Biking?
We Do It! It's that simple.

Wild Rose
702 Third Ave.
533-8671

PROGRAM

KRCL



91FM

SCHEDULE

SUNDAY	MONDAY	TUESDAY	WEDNESDAY	THURSDAY	FRIDAY	SATURDAY
<p>6:30 to 7 am Morning Light "Consider the Alternatives"</p> <p>7 to 10 am Living the Circle of Life Native American music, news and information with host Max Packineau. National Native News airs at 8:30 am.</p> <p>10 am to 2 pm Sagebrush Serenade Music to ease you from your morning cup through your Sunday afternoon. Manageable folk and rock with a country flavor with alternating hosts Phil Lanouette and Rick Stayner.</p> <p>2 to 5 pm Bluegrass Express Join Bob and Matt Flinner and Tony Polychronis for the best in bluegrass; the music that is at the root of a lot of the country and folk tunes popular today.</p> <p>5 to 5:30 pm Riders Radio Theater Cowboy music and zaniness from "Riders in the Sky."</p> <p>5:30 to 7 pm Fret 'N' Fiddle Traditional folk music from here and abroad, with your host Lewis Downey or Mark Cantor.</p> <p>7 to 8 pm New Dimensions See Public Affairs Schedule.</p> <p>8 to 10:30 pm Nexus Electronic and acoustic music with Perry Shepard.</p> <p>10:30 pm to 1 am Variables Electronic, new age and contemporary jazz with your host Scott Howard.</p> <p>1 to 3 am Music</p> <p>3 to 6 am Cassette Culture Shock Hosted by Brian Baker. Music from independently released cassettes.</p>	<p>6 to 8:30 am Breakfast Jam A blend of acoustic, folk, and acoustic rock. Goes down well with coffee and toast.</p> <p>8:30 to 9 am Morning Light "Consider the Alternatives"</p> <p>9 am to 12 pm Touch the Earth Folk, organic and acoustic music with Kevin Fiorendo.</p> <p>12 to 12:30 pm Reading</p> <p>12:30 to 1 pm Our Arts</p> <p>1 to 3:30 pm Global Gumbo Host Jeff Salt plays a diverse mix of ethnic and tribal sounds.</p> <p>3:30 to 6:30 pm Drive Time A wide range of music with an emphasis on rock, jazz, and blues.</p> <p>6:30 to 7 pm Pacifica News</p> <p>7 to 8 pm Montage: Radio Pilipino Experience the Philippines—their music and news. Keep up with the latest "Pinoy" happenings in Salt Lake City. Hosts Vic Fernandez and Joseph Moratalla.</p> <p>8 to 10:30 pm Red, White, and Blues Explore the variety of this distinctively American musical form, with a smattering of her offspring: jazz, rockabilly, soul, rock-n-roll. J.R. Rokich is your host.</p> <p>10:30 pm to 1 am Blue Highway Truman brings you electric blues, from the sixties to the hottest artists now on tour. The best in soulful guitar, harmonica and horns to drive away your Monday blues.</p> <p>1 to 3:30 am Total Harmonic Distortion From Neubauten to Clock DVA this is hard, angst-ridden, disturbing industrial. Hosted by cyber punx Alan and Les-man.</p> <p>3:30 to 6 am Post-Modern High-Rise Table Top Stomp Rock and folk music with host Dave.</p>	<p>6 to 8:30 am Breakfast Jam Many varieties of music suitable for stimulation, motivation, and contemplation. With your host Matthew.</p> <p>8:30 to 9 am Morning Light Women's public affairs.</p> <p>9 am to 12 pm Women or Nothing Beth Weech, Cynthia Davis, or Tami Fraser present a variety of music by women. Rock, jazz, soul, folk, country and more as it's discovered.</p> <p>12 to 12:30 pm Reading</p> <p>12:30 to 1 pm People's Business See Public Affairs Schedule</p> <p>1 to 3:30 pm Global Gumbo One world radio starts here. With host Fillat.</p> <p>3:30 to 6:30 pm Drive Time Mostly "urban folk" but don't be surprised to hear some Blues Zydeco or World Beat. Join Steve for music, short features and this week's "album of the year."</p> <p>6:30 to 7 pm Pacifica News</p> <p>7 to 8 pm Montage: Voice of Polynesia Music from Samoa, Tonga, Tahiti, and other Pacific Islands with alternating hosts--Wayne and Ellen Selu, Joel Uluakiola, and Danny Tapeta.</p> <p>8 to 10:30 pm God's Zoo Join Scott Bringard for a variety of Alternative and Underground music.</p> <p>10:30 pm to 1 am Brave New World Alternative and underground music, industrial dance and more, with host Eric Anderson.</p> <p>1 to 3:30 am Music</p> <p>3:30 to 6 am Seremous Ropes Alternative rock—R.E.M., the Smiths, Prefab Sprout—with host Richard.</p>	<p>6 to 8:30 am Breakfast Jam Ease into the day with acoustic, folk, and jazz, hosted by Jodi and Keith Browning.</p> <p>8:30 to 9 am Morning Light "Common Ground"—international issues.</p> <p>9 am to 12 pm Le Cafe Folk Contemporary folk music with a touch of tradition and ethnic hosted by Donna.</p> <p>12 to 12:30 pm Reading</p> <p>12:30 to 1 pm Concerning Gays and Lesbians News, information, and interviews from Utah's gay and lesbian community.</p> <p>1 to 3:30 pm Global Gumbo Afro-beat to Zouk, with plenty of other worldly beats mixed in. Monthly specials on certain performers, countries, and styles. With your host Steven Sef-tel.</p> <p>3:30 to 6:30 pm Drive Time Rock, blues, folk, reggae, and more with host Mike.</p> <p>6:30 to 7 pm Pacifica News</p> <p>7 to 8 pm Montage Host Craig Miller presents ethnic music of the local communities. First Wednesday hosted by John Shilaos for Greek music and info on Greek community.</p> <p>8 to 10:30 pm Red I Roots All styles of reggae music. Hosted by Ken Quail.</p> <p>10:30 pm to 1 am Nite Roots Reggae, reggae, reggae with Papa Pilgrim. Listen for "Reggae Runnings"—upcoming reggae events.</p> <p>1 to 3:30 am One Step Beyond Ska music with Ska Bob or Jack Rude.</p> <p>3:30 to 6 am Music</p>	<p>6 to 8:30 am Breakfast Jam Ease into the day with some rock, folk, jazz, and Jo Wilson.</p> <p>8:30 to 9 am Morning Light See Public Affairs Schedule.</p> <p>9 am to 12 pm Women: The Second Decade Babs DeLay shares the accomplishments of women from the 1920's to the 1990's. Women's News, Rape Crisis Report and specials on women in herstory.</p> <p>12 to 12:30 pm Reading</p> <p>12:30 to 1 pm Lunch Encounter See Public Affairs Schedule</p> <p>1 to 2 pm New Dimensions Radio A rebroadcast of Sunday's program.</p> <p>2 to 3:30 pm Global Gumbo Musical jaunts around the globe, set to break all barriers with word sound power.</p> <p>3:30 to 6:30 pm Drive Time An eclectic mix of music and more.</p> <p>6:30 to 7 pm Pacifica News</p> <p>7 to 8 pm Listener's Choice KRCL's listeners play their favorites.</p> <p>8 to 10:30 pm Aural Decay A diverse mix from rock to reggae. You want covers? We got 'em. If they don't fit, we'll take 'em in a little. Hosted by Dave S.</p> <p>10:30 pm to 1 am Perpetual Change Blues, jazz, folk and rock for Deadheads, Parrot-heads, or just about any music head. You never know what happens next. Otis.</p> <p>1 to 3:30 am Pet Sounds From the fifties to the nineties host Paul plays an eclectic amount of music.</p> <p>3:30 to 6 am to the Pit Host Brian plays a mixture of speed and thrash metal—heavy!</p>	<p>6 to 8:30 am Breakfast Jam Gary Timm eases you into your morning with a blend of acoustic rock, folk and bluegrass.</p> <p>8:30 to 9 am Morning Light "Crossroads"—issues from a minority perspective.</p> <p>9 am to 12 pm Rhythm Traxx A collection of soul and jazz with occasional rap. A twist of oldies and dusties will lighten the mood. Host Jonathan brings you music heard nowhere else in Utah.</p> <p>12 to 12:30 pm Reading</p> <p>12:30 to 1 pm La Voz de la Gente Guests talk with host Abby Trujillo Maestas or Rebecca Chavez-Houk.</p> <p>1 to 3:30 pm Elements of Soul Soul, rap, funk, 70s to 90s with host Earl B.</p> <p>3:30 to 6:30 pm Drive Time Friday brings you Chuck Bradley or Lance Drummond presenting rhythm and blues and old rock and roll, plus social issues and information.</p> <p>6:30 to 7 pm Pacifica News</p> <p>7 to 8:30 pm S.O.A.P. Sounds of a party. Sam Smith keeps you up to date with the rest of the world with dance, soul, and rap.</p> <p>8:30 to 10:30 pm Rapp Attack With your host Buzz</p> <p>10:30 pm to 1 am Poetic Injustice Rock, Blues, Old and New Wave. Spine-tingling, mind-tingling tunes covering the past thirty years, with host Ken Sullivan.</p> <p>1 to 4 am Thrash Metal with host Les Nilsson.</p>	<p>4 to 7 am Righteous Edge Gospel, contemporary Christian rock. An unexpected mix pulled together by Carol and Marvin Dixon.</p> <p>7 to 8 am Sangeet Malar From the subcontinent hosted by Uma Khandkar and Anjali Deshpande.</p> <p>8 to 10 am Asian Chimes Music and information from the communities of China (with Grace G. and Y. Lin), and Viet Nam (with Dung Hoang and Thu Vo).</p> <p>10 am to 1 pm The All-Weather Radio Show Presentation of 60's music; past and present; folk and rock; familiar and obscure. Hosted by Hamamoto.</p> <p>1 to 4 pm Unusual Occurrences in the Desert Acid rock to Zydeco. A to Z. Rock and Reggae. R & R. If the mood fits, wear it! Hosted by Lisa Mace.</p> <p>4 to 7 pm Smile Jamaica The tradition continues: from Spongi Reggae to deep dish Dub. Host Robert Nelson serves up strictly roots.</p> <p>7 to 9 pm Phono Synthesis Jon Bray and Kay Robinson try to bring light to a dark music scene. Tune in and grow.</p> <p>9 to 11 pm Music</p> <p>11 pm to 3:00 am Behind the Zion Curtain Synthetic, authentic punk—hard core! Stewart Gollan is the guilty one who cracks your Saturday nights and Sunday moms with the sounds of the new wave.</p> <p>3 to 6:30 am Sonic Slaughterhouse Industrial hard-core, grind core, death metal with mister happy face, JR.</p>

Music Notes

by

Ken Pavia

We have had a lot of turnover lately in the music programming schedule with not much time to put in new shows, but I can at least tell you who we'll miss. June Turnbull of "Monday Breakfast Jam" and Dave Hein of "Listener's Choice" and "Stardate" have moved to Colorado. They were very dedicated and hard-working volunteers and will be sorely

missed. Whatever community station they hook up with in Colorado is very lucky. Also, Chiedu Megwalu, Mark C. Jackman, Marilyn and Richard Scharine, and Lee Cano will be sorely missed. Chiedu was the host of Thursday Global Gumbo and was very beneficial to have at KRCL, adding his unique culture and points of view to our airwaves.

Mark C. Jackman hosted "Signals From the Shadow Pools" on Saturday nights and was a co-producer for "Our Arts," but has moved on to bigger and better things for his artistic career. Good Luck, "Moxy."

Marilyn and Richard Scharine, co-producers of "Our Arts" and "Reading" have gone to Poland for

a year. What an experience that will be! Hopefully, they will come back to us soon. Lee Cano, a late-night programming creature, has gone out of the state, hopefully temporarily and will hopefully return. Now that Fall Radiothon has come and gone, successfully, might I add, thanks to all of you who pledged, I'll be able to put full energy into

getting some great new shows on the air to replace all of those who have left us. Such is the life and cycle of community radio. Nothing's permanent, and there always seems to be someone to step into the shoes of one who has left. Have a great holiday and new year season. See you in '93.

Ken

USDC Inspected
FRESH Seafood at

Dan's

Now open
seven days a week!

**Mount Olympus
Spring Water**

1825 So. 3730 W
Salt Lake City

A Day In The Life Of KRCL

by Ken Pavia

Saturdays on KRCL--a truly typical day for diversity and variety. You can hear new music from all over the world, as well as standard favorites.

Saturdays start early, 1:00 a.m., with the very, very heavy "Thrash Metal Show", hosted by Les Nilsson. You also have a good chance of hearing the ever-present cyber-punk Alan, who likes to hang around and give Les a hard time. Les keeps the music to the grindier side of things, with bands such as Slayer, Demolition Hammer, Cannibal Corpse, and beyond. It's definitely not a show for the un-initiated, and it likes to keep its listeners awake.

At 4:00 a.m., "The Righteous Edge" takes over to make restitution for all the sins of the preceding thrashers. This has got to be the most unique KRCL show of all time, with music ranging from traditional gospel to Christian metal. Carol and Marvin Dixon are the faithful hosts whose personalities add further depth and dimension to the show. If you are up at that time, it is the show to have your dial tuned to. You will be lifted.

7:00 a.m. and KRCL goes global with "Sangeet Malar." Hosts Uma Khandkar and Anjali Deshpande will tell you what the title means, just tune in. It's tri-lingual music show from India, mostly show tunes with a little instrumental thrown in for meditation purposes. It was in early 1991 that Uma and Anjali approached KRCL with the proposal for their show. They kept knocking on the door, persevered through training, demo tapes, and late-nights on-air to arrive at the point they are now, and KRCL is very proud to have such a show on its airwaves.

"Asian Chimes" continues at 8:00 a.m. with the "Chinese Hour" until 9:00 and the "Voice of the Vietnamese" un-

til 10:00. Like "Sangeet Malar," these shows are also done in their own languages as well as English. Grace Ge and Y. Lin host the music from China, and Dung Hoang and Thu Vo do the Vietnamese music. These three shows back-to-back give you three solid hours of music you are definitely not going to hear anywhere else on radio in Utah, and KRCL is proud to bring it to you.

10:00 a.m. on KRCL lands us back in the U.S., but in a time warp--back to the '60's with "All Weather Radio" and Hamamoto. "All Weather" prides itself on having obscure characteristics as well as familiar. The show starts with its theme music from Steve Miller Band and goes right in to psychedelic '60's and early '70's like Pink Floyd, progressing on its journey into harder acid rock, and eventually touching artists such as Jimi Hendrix, Alice Cooper, Led Zeppelin. Yes, a lot of bands you have heard of, but not the same songs you will hear elsewhere.

At 1:00 p.m., the rock and roll continues with Lisa Mace and "Unusual Occurrences in the Desert." Tune in and ask her how she came up with the name. The difference with "Unusual Occurrences" and "All Weather" is that now, you will hear a lot more up-to-date tunes, maybe a little bit of zydeco, reggae--unusual, as the title suggests.

Next up is "Smile Jamaica" at 4:00 p.m., and you guessed it--reggae. This long-standing KRCL show, now hosted by Robert Nelson, is pure-and-undiluted-drum-and-bass-beat-of-the-heart reggae. No flashy pseudo stuff. It's issue-oriented, spiritual, fun-loving, humorous, tongue-in-cheek, all rolled in to one. Lots of obscure and rare stuff as well as the favorites. Check it.

"Phonosynthesis," another long-standing KRCL show,

comes up next at 7:00 p.m. Either John Bray or Kay Robinson host this alternative whatever show that defies pigeonholing. Good for them. It could be mellow, punky, industrial, you name it. Some bands that you'll hear from time to time? Try The Slits, Sonic Youth, accapella Beatles, Bad Brains, just to name a few of the more familiar. The rest is quite obscure and unique. If your attitude needs adjustment, listen.

Last but not least of the Saturday shows is "Behind the Zion Curtain," 11:00 p.m. until 3:00, a show it seems many people grew up to or got their start listening to KRCL with. Stewart Gollan is the current host, but he's just started, so his particular style of hardcore has yet to be experienced to its fullest. One thing for sure, though, is that its bound to be hard, good, and alternative.



CDs • TAPES • GIFTS
&
DRUMS

HALCYON SQUARE
ETHNIC MUSIC GALLERY & RASTAFARIAN SHOP
1300 S. 900 E., SALT LAKE CITY, UTAH 84105
487-9505
HALCYON MEANS PEACE

A Donut without the cellulite! The Brackman Bagel.



The bagel is low in fat, low in sugar and packed with energy-producing carbohydrates. No cholesterol here!

Eleven varieties are baked fresh throughout the day at every location. Brackman Bros. uses only the finest natural ingredients. No preservatives are added.

Freshness, quality, high nutrition, and delicious taste--why not dunk The Brackman Bagel instead!

**BRACKMAN BROS.
BAGEL BAKERY**

November Lunch Special \$3.49

Bagel Sandwich • Hot Soup • Fountain Drink

147 S. Main • 869 E. 900 S. • 1520 S. 1500 E. • 4784 Highland Drive • 7-7 Mon-Fri. 7-5 Sun.

**ALL
ABOARD!**

For great Mexican food.



Rio Grande Cafe
270 South 455 West
Lunch Mon-Sat 11:30-2:30
Dinner Sun-Thurs 5:00-10:00
and Fri-Sat til 11:00

**TWIST
ideas** Phone (801) 355-5919



YOUR RESOURCE FOR
ADVERTISING/DESIGN

- Silkscreen • Pens
- Hats • T-Shirts

Ask About
our Special
Business Cards & Forms

Birkenstock

Orlando



Just
Arrived
in 4 Colors!

**Kirkham's
outdoor products**

3125 South State Street, (801) 486-4161
Open Monday-Thursday 9:30 to 8:00
Friday to 9:00 Saturday to 6:00

KRCL to offer new children's radio series

A father asked his child, "Do you prefer radio or television?" "Radio," the child replied, "the pictures are much better."

Day Is Done is an early evening, winter, lullaby radio series. The series has been created by a host of Utah artists to nurture the imagination and aural experience of Utah's children. It will offer an alternative to TV for a few nights this winter. *Day Is Done* is using a simple format of stories, poetry, sing-a-longs, sounds and voices to:


- Encourage a creative mood of listening and affection at a crucial hour of the day--bedtime;
- Introduce listeners to the treasury of words, rhymes and melodies which are part of our diverse cultural heritage;
- Inspire the creation of works by children and foster imaginative, interactive listening and enjoyment of music, poetry, stories and sounds;
- create a body of original music, poetry and literature composed, written and performed by several of Utah's finest artists.

The tales featured on the series will focus on the proximate, everyday heroics of children placed in situations that call upon human resources such as courage and kindness. The series has selected and commissioned works by local authors that praise the common child, who can be an extraordinary human being.

Day Is Done will be hosted live by Utah aural artist, Alex Caldiero and include works by Caldiero, Vera Bakker, Phyllis Barber, Christena Nelsen, Rachel Nevarro, Leslie Norris and Paul Pitts. Listeners will hear the music of Mark Jardine and Tenpenny, Cheryl Hart leading rounds, and the New Shtetl Ramblers. "International Grandmothers" will share bits of Russia, Samoa, China, Mexico, southern Utah and more.

Bring your kids to a fundraiser for the series at the Art Barn, Friday, November 13th at 7:00 p.m. You are invited to a preview of *Day Is Done* that evening when you can enjoy many of the performers, oatmeal cookies and warm cocoa. Donations of \$10.00 per family or \$2.50 per person will help pay production costs to finish the series.

Day Is Done is a production of Art Forms, Inc. and is made possible by hundreds of volunteer hours and grants from the Utah Humanities Council, the Utah Arts Council, the Salt Lake Arts Council and the Escuche Foundation. It is being underwritten by the Children's Hour Bookshop.



guitars mandolins fiddles books, kits

banjos hand-made instruments accessories

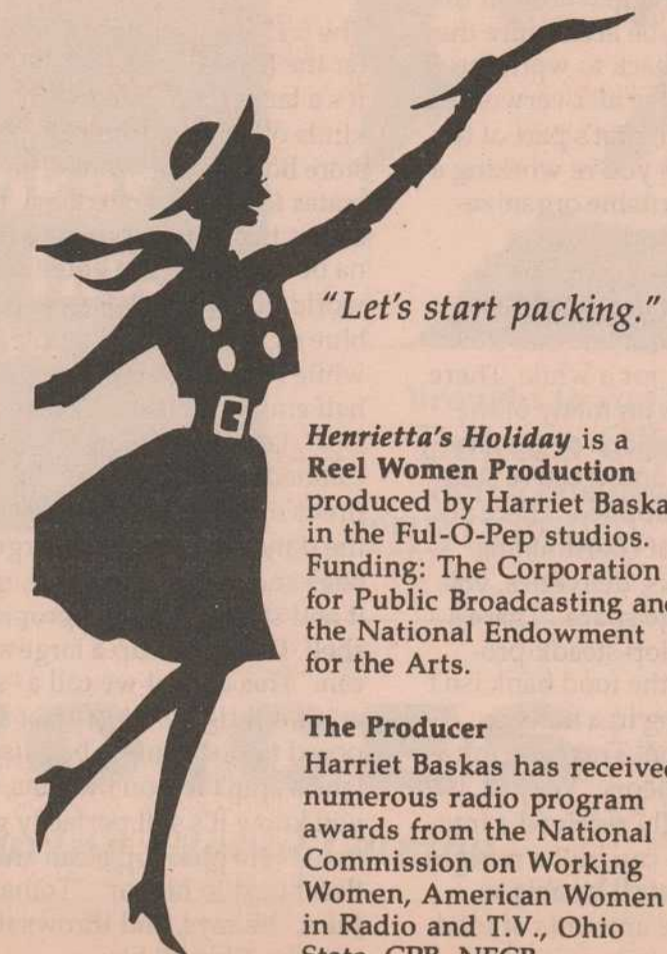
Master Craftsmen Rentals Lessons
712 EAST FIRST SOUTH, SALT LAKE CITY, UT. 84102
(801) 322-4682
10 AM - 6 PM, MONDAY thru SATURDAY

CATALYST

140 S. McClelland
Salt Lake City, Utah 84102
Call: 363-1505

Coming to KRCL Thursdays at 11:45 a.m. during Women the Second Decade

HENRIETTA'S HOLIDAY
Portraits of Unusual Museums
Around the Country



"Let's start packing."

Henrietta's Holiday is a Reel Women Production produced by Harriet Baskas in the Ful-O-Pep studios. Funding: The Corporation for Public Broadcasting and the National Endowment for the Arts.

The Producer
Harriet Baskas has received numerous radio program awards from the National Commission on Working Women, American Women in Radio and T.V., Ohio State, CPB, NFCB, Armstrong Foundation, Washington Press Association and others.

Her collections include hankies of the states, snow globes, and brightly colored plastic kitchen utensils.

all my cookies



865 East 900 South
(in the alley)
359-8938

WATCH TOURING
MOUNTAIN TRAVEL SPECIALISTS



702 E. 100 S., SLC / 359-9361

Coming to the airwaves of KRCL -- listen for details

THE RADIO WORKS
AN AUDIO THEATER SHOWCASE

PRODUCED THROUGH THE FACILITIES OF WRHU-FM • RADIO HOFSTRA UNIVERSITY • 1000 FULTON AVE, NY 11550 • (516) 463-5668

(cont. from page 4)

sonnel, prisoners, volunteers from the Bennion Center at the U of U, and the Catholic churches and many other churches provide many volunteers."

"We couldn't do it without the volunteers and staff. They go home kind of ragged around the edges and maybe aren't sure they want to come back to work the next day. They're all overworked and underpaid; that's part of the program when you're working a non profit charitable organization."

Some pieces of the puzzle are hard to figure out and can slow Winters down for a while. There are restrictions on many of the corporate donations or government funding and creative solutions must be applied. There are the problems of coordinating fork lifts, trucks, deliveries, volunteers, storage space. There's trying to develop steady programs so that the food bank isn't always working in a hand to mouth situation. There are infrastructure problems: "We just, two days ago, finally received a tractor so now we can pull a refrigerator unit and we'll be able to transport large amounts of food to emergency units across the state."

There are problems with dissipation in the salvage business. "We always encourage people to bring their donated food here, because we have the resources to handle it and distribute it properly. At some food banks, you run into problems where people take more than they can use or end up throwing food away; the Utah Food Bank becomes the clearinghouse, the point where you can balance those things."

And of course, there's always money problems. "Unfortunately, as my predecessor Lowell Bennion used to say, "people have occasional fits of charity", and those occasions are usually Thanksgiving or Christmas. We want to encourage people to have their fits of charity year round. Four years ago when I went over the budget with Lowell, we had \$46,58 in the bank account. And I said Lowell...how do you keep this place running? And he said, 'Well, you know, it always seems to come out all right.' You try to do anything you can do to get the money. Fundraising is hard. And the community here is so wonderful but you still get turned down. I get thrown out of some of the

best places in town! I just try to keep it all glued together. You know why? Enough food is wasted in this country every day to feed 49 million people. This is food that ends up in the dumpster. Fresh food. Now that is just gross."

The 5:15 trains chugs by as we enter the Food Bank's warehouse. It's a large room lined with all kinds of boxes. "Ironically, liquor store boxes make wonderful crates for us, and of course, the best is the banana box. The banana box is the grease of the salvage world," chuckles Winters. Bright blue sign with hand painted white lettering hang above the half empty shelves: "Cereal - Dry", "Jam/Jelly/Honey"; "Meat - Canned." This is where the hundreds of volunteers sort out all of the donated foods from large bags and boxes, identify it, mark it and store it in the appropriate shelf. Dick picks up a large silver can. "This a what we call a "shiner" or a "bright". We're not supposed to distribute it because the labels aren't left on the cans, but you know it's still perfectly good food." He picks up a can and rattles it next to his ear. "Tomato Juice," he says, and throws it back into the "Shiner" box.

We walk past crates of bottled mustard, fruit juices, diapers. Dick Wilson goes home after a long day's work.

I think about the "brights".

The real "brights" in this operation are the dedicated and "unlabeled" staff, volunteers and all of those who contribute in various ways to the Utah Food Bank behind the scenes. During the holiday season, and especially all year long, the Utah Food Bank is happy to accept any phone calls, contributions or volunteer assistance to help make their world, and the world of Utah's needy people, a little brighter. Be a star in your corner of the sky. The Utah Food Bank has a 24 hour drop off bin for any individual contributions of food. Here's the Utah Food Bank's phone number and address:

Utah Food Bank
@ The Community Services Council
212 West 1300 South
Salt Lake City, Utah 84115
486-2136

**BAUHAUS
BEATLES
BOWIE
CLASH
CRAMPS
CURE
DEAD
DEPECHE
DOORS
ECHO
FLOYDE
HENDRIX
JOY DIV
LED ZEP
MARLEY
MORRISEY
PISTOLS
SIOUXIE
SMITHS
STONES
U2
WHO
ZAPPA
AND
MORE**

**GREAT
CHRISTMAS
GIFTS**

**GREAT SELECTION OF NEW & USED
LP'S, CASSETTES, COMPACT DISCS, 12" AND 45'S
COLLECTABLES AND MORE**



**THE
RECORD
COLLECTOR**


WORLD'S GREATEST POSTERS

1115 EAST 2100 SOUTH, SUGARHOUSE
484-6495

**Gardiner
Distributing**
554 West 100 South
Salt Lake City, Utah 84101



**Utah Museum
of
Natural History**
University of Utah
Salt Lake City, UT 84112



BEER • LIVE MUSIC • POOL • FOOD
ARROW PRESS SQUARE
168 SOUTH WEST TEMPLE • PHONE 328-GOAT

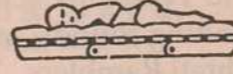


**BLUE
BOUTIQUE**

2100 South 1100 East
S.L.C. UT.
485-2072

LINGERIE
SWIMWEAR
JEWELRY
INCENSE
TIE-DYE CLOTHING
CARDS
ADULT NOVELTYS
GIFTS
FUTONS & FRAMES
Environmentally Safe Wood

OPEN 7 DAYS A WEEK



BLUE BOUTIQUE

*When selling your home,
Pick someone you already
trust...*

**Babs De Lay, Associate Broker
Coldwell Banker Premier, Inc.**
12 years on KRCL, 8 years in real estate.
Dedication, hard work and honesty.

O: 486-3175 UM: 461-3368



**Riders'
Radio
Theater**


It's the Cowboy Way!

brought to you by
Bakers C&C
doing business
THE COWBOY WAY!

« **TRANS-VOICES** »
airs wednesday at 2:00 pm during Global Gumbo

Des artistes
français et
américains
interrogent
le devenir
du monde

*The
State
of
the*



ARTS

The Arts Magazine

INTRODUCING
THE ARTS MAGAZINE.
EACH MONTH WE'LL ENGAGE
YOU IN THE EXPERIENCE OF THE
ARTS WITH LIVELY FEATURES ON
MUSIC, DANCE, THEATER, LITERATURE,
FILM/PHOTOGRAPHY, AND FINE ART.

FREE TO KRCL MEMBERS AND CONTRIBUTORS
OF \$30 OR MORE TO ANY NON-PROFIT ARTS
ORGANIZATION.

PLEASE FILL OUT THE COUPON AND RETURN
IT FOR YOUR SUBSCRIPTION TO THE ARTS
MAGAZINE. A MUCH-NEEDED RE-
FLECTION OF THE PEOPLE WHO
CREATE ART, AND THOSE
WHO HAVE A PASSION
FOR IT.

**THE
ARTS
magazine**

KRCL MEMBER OR ARTS CONTRIBUTOR (FREE)
PLEASE SEND PROOF OF CONTRIBUTION.
 \$24 SUBSCRIPTION

CHECK PAYABLE TO:
THE ARTS MAGAZINE,
P.O. Box 3448, SLC, UT 84110
943-1966

NAME _____
ADDRESS _____
CITY _____
STATE _____ ZIP _____ PHONE _____
SIGNATURE _____

"Letters to the Editor" Marks Fifth Anniversary by Ken Pavia

It was the summer of 1987; Iran-contra was going strong, Oliver North, Poindexter, and many other witnesses paraded across KRCL's airwaves on a daily basis when the station decided to air, live and in its entirety, the Iran-contra hearings. Listener response to the hearings, evidenced in phone calls and letters, was tremendous. The obvious fact that the community needed an outlet for its varied opinions inspired the staff and volunteers to come up with a permanent, ongoing outlet.

Thus, KRCL's "Letters to the Editor" was born, with its first broadcast on November 26, 1987, featuring then-Representative Howard Nielsen. Now, after five years, producer Marc Hoenig reflects on the beginnings of the show. "We started with Representative Nielsen just to demonstrate that we intended on being objective with the show. But more than that, we wanted the editorials to be thought-provoking and to show the other side of issues."

During its five-year life, "Letters" has been able to live up to its purpose by being an open forum where anyone with a responsible opinion can have their voice heard. Says Hoenig, "We empower the people to get their opinion across. It is a service they should take advantage of."

The topics and points of view are as varied as the 184 people who have been on the show. Often, when people of notoriety pass through town, Hoenig offers them the chance to air an opinion. People such as Sonia Johnson, Wayne Owens, Palmer De Paulis have voiced opinions right along side with people whose names are not as well known but nonetheless have just as informed and valid opinions. All sides of the story can be heard, from Libertarian Presidential candidate Andre' Morrou to Si Gerson,

member of the National Committee of the Communist Party.

Obviously, in order for the show to continue, listeners need to continue offering their opinions. Hoenig's hope for the show is that it will become popular to the point that there will be a waiting list for people to get their opinions aired. As it is now, he has to go out and search for the opinions, nearly 95% of the time.

"Letters to the Editor" airs weekdays at 6:58 p.m., immediately after Pacifica News and at 4:30 p.m. on Tuesdays and at 9:30 a.m. on Wednesdays. So if you have an opinion, about anything, anytime, take advantage of this free opportunity to have your voice heard. Send your written opinion along with a telephone number to "Letters to the Editor," c/o KRCL, 208 West 800 South, Salt Lake City, UT, 84101, and the producer will contact you to be a part of this valuable show.



NIZHONI TRADING COMPANY

FASHION PLACE MALL (east end)
Native American—
tapes, music, rugs, pottery,
katchinas, art, alpaca

REGGAE SUNDAY BRUNCH



Good Rude Food!
38 East 1300 South
467-6660

KRCL 91FM

—listener supported community radio—

thanks the following
businesses for donating the goods and
services which helped us raise \$80,359
during our 1992 fall radiothon pledge drive:

Dan's Foods
Cream o' Weber
Pepsi
Intermountain
Guitar and Banjo
Acoustic Music
Wasatch Touring
Salt Lake
Roasting Co.
Cafe Rude
Crompton's
Freewheeler Pizza
New Frontiers
Cafe Mediterranean
an
Ruby's Catering
Cannella's
The Plum Restaurant
at Embassy Suites
Kentucky Fried
Chicken
Pizza Hut
Peery Pub
Pancho Villa
Hot Rod Hundleys
Repertory Dance
Theater
Grunts and
Postures
Jay Jones
A Woman's Place
Bookstore
Steve Kuhnhasen
Ririe-Woodbury
Gastronomy

Get In Here!
Juniors Tavern
Park City Ski Area
Christine's
Hansen Planetarium
The Zephyr Club
Graywhale CD
Kismet
KUED
Highbrow Books
Halcyon Square
Space Agency IAMA
Peak Performance
Utah Opera
The Other Side
Salt Lake Acting
Co.
Theatreworks West
Ballet West
Agape Acupressure
& Massage
Utah Museum of
Natural History
Sierra Club
Silver Fork Lodge
ec•lec•tic
Utah Symphony
Millcreek Inn
Rio Grande Cafe
The Head Trip
Intermountain
Acoustic Music
Magazine
Wellness Resources
Tower Theater
Times Metro

Thank You!

(Letters, cont. from page 3)

Dear KRCL,

I listen to your station and my faith is renewed in humanity and our ability to solve our problems and create a whole world, where life is sacred...in all its diverse forms. Also I pledged and hope to get a t-shirt or mug.

Thank you for Breakfast Jam and Babs Delay...Global Gumbo, Donna's calm intelligence and an intelligent look at our lives from news and special issues discussions. Keep the spirit!
Blessings from the fooly-bear!

Suzanne H. Hogan

KRCL,

This embarrassing pledge (\$1.00) comes from my friend. I've been trying to get him interested in diversity, but he remains as myopic and uninformed as your typical Utah "Zionist." He said "I'd only give a dollar to KRCL." I figured I'd hold him to it. A dollar spent on KRCL is better spent on diversity and progress than on a Coca-Cola or something. Please don't view this as a waste of time, it's a step in the right direction.

—Viva KRCL—

Dear KRCL,

Sorry it took so long for me to get my pledge in. I would have sent it sooner but I was caught in a time distortion field and sent to a world far, far away where a big, fat, hairy, two-headed king and queen had offered me all the riches of the universe except freedom.

But I declined for I knew there was no greater treasure than freedom, so they sent me back.

Did I dream this, did I have a vision, I'm not sure. But I do know that freedom should not be a luxury for a few people, it should be a way of life for all. So show what little freedom you have and donate what lit-

tle or a lot to keep freedom alive.
Sincerely,
Ron Broemer

KRCL,

Thank you for the music and stories. My son and I have enjoyed listening to the station and have contributed each beg-a-thon. Unfortunately, I am not wealthy and have tried to teach my son the responsibility of money, of which he quite generously pledged 5 bucks (he gets 2 for allowance), and I also pledged 5 bucks. The sarcastic slam of my meager donation on the air by the folks at the station not only made me wish I had never called in but also helped in my decision never to donate again. Plus I'll leave the station off the air during the next beg-a-thon so my son won't have to feel the need to give to his public broadcasting radio.
Take my name off your mailing list.

Michelle Williams

Dear KRCL,

Well here it is — my pledge from the Spring Radiothon. Better late than never I guess. Though it has taken me a while to get this money in, I have not ceased being a devoted listener. I think the diversity of programming is what makes KRCL the premier radio station in Utah. I also enjoy everything from *Riders Radio Theater* to *Smile Jamaica*. What more can I say? JAM ON!

Sincerely,
Chad Rhinehart

Dear KRCL,

I am a fan of KRCL and enjoy the reggae music you play each Saturday. I love the concerts you support each year. You guys are great! I hope to hear reggae music played more in Utah. I appreciate all you guys do for your fans.

Respectfully,
Drew Yeates

Support these underwriters

- | | |
|---|---|
| Acoustic Music
857 East 400 South | Modified Records
859 E. 900 S. |
| All My Cookies
896 East 900 South | Morning Ray Cafe
Main Street in Park City |
| American West Analytical Laboratories
463 West 3600 South | Mt. Olympus Waters, Inc.
1825 South 3730 West |
| Atticus Books
1132 South State Street, Orem | Nizhoni Trading Company
Fashion Place Mall |
| Bakers C&C, Inc.
367 West Paxton (1170 S) | PCI Signs
3153 South 300 West |
| J. R. Bess
4700 South 900 East, Ivy Place #28 | Performance Audio
2358 South Main |
| Blue Boutique
2100 South 1100 East | Private Eye
125 West Center Midvale |
| Cafe Rude
38 East 1300 South | Pro-Systems
934 East 5030 South |
| Catalyst
140 South McClelland | RESNA
8341 South 700 East |
| The Coffee Mill
in Cottonwood Mall | Rio Grande Cafe
270 South Rio Grande Street |
| C & C Carpet Cleaning
566-7576 | Ruby's Catering
564 East 3rd Avenue |
| Corporation for Public Broadcasting
Washington, D.C. | Salt Lake Roasting Company
320 East 400 South |
| Cream O' Weber Dairy
Look in your local grocery store | Snowbird Ski & Summer Resort
Little Cottonwood Canyon |
| Dan's Foods
Salt Lake City | Michelle Solvej
Wardley Better Homes & Gardens
660 South 200 East #402 |
| Dead Goat Saloon
Arrow Press Square | Soundoff
2107 South 200 East |
| Downtown Storage
29 West 800 South | Sunrise Press
252 West 1300 South |
| Elemente
353 W. Pierpont Ave. | The Trapp
102 South 600 West |
| Event Newspaper
Arts and Entertainment | T P Gallery
252 South Main |
| Foothill Oriental Rug
1464 Foothill Drive | Ukhozi—African Arts
Crossroads Mall 3rd Level |
| Gardiner Distributing
554 West 100 South | U.S. Voice Mail
450 South 900 East, Suite 110 |
| Gayle Street Inc.
466-4822 | Utah Museum of Natural History
University of Utah |
| Get In Here!
900 South 900 East | Wasatch Touring
702 East 100 South |
| Halcyon Square
1300 South 900 East | Wasatch Travel
278-4771 |
| Insta Sign
1240 East 2100 South | Wave Products
125 West 2100 South |
| Intermountain Guitar and Banjo
712 East 100 South | Winds of Change
Alternative Magazine |
| Intermountain Litho Printing
4030 South 500 West | Zephyr Club
301 S. West Temple |
| Kirkham's Outdoor Products
3125 South State Street | |
| Lagoon
Farmington, Utah | |

Dulcimers,
Guitars, Lessons,
Repairs

Acoustic Music
857 East 400 South
Salt Lake City, Utah 84102
Call (801) 531-7066

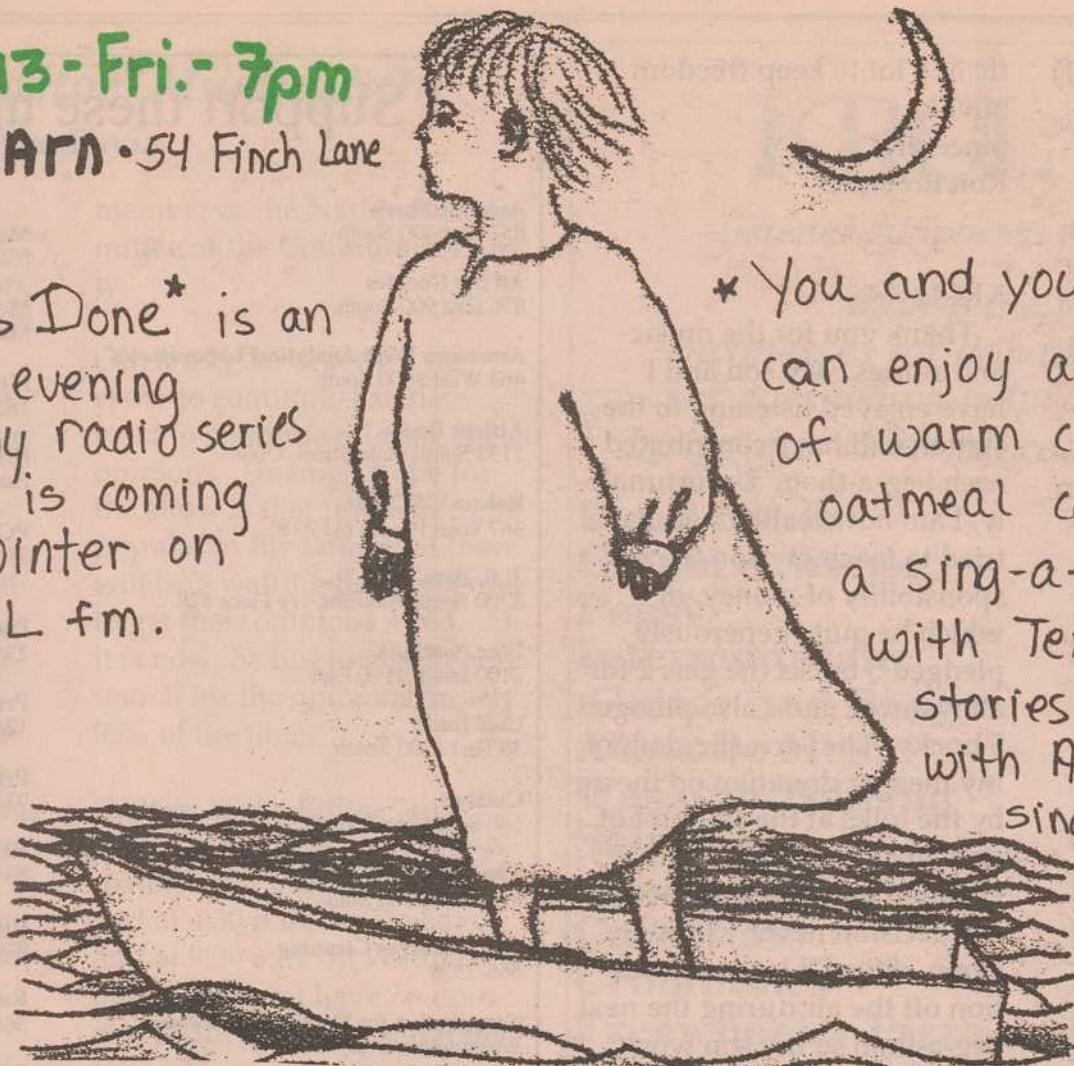
ATTICUS BOOKS
AND COFFEEHOUSE



1132 South State Street Orem, Utah 84058 (801) 216-5544

* Nov. 13 - Fri. - 7pm
Art BARN • 54 Finch Lane

* Day Is Done* is an early evening lullaby radio series which is coming this winter on KRCL fm.



* You and your children can enjoy an evening of warm cocoa, oatmeal cookies + a sing-a-long with Tenpenny, stories + poems with Alex Caldero, singing rounds, international Grandmothers!

* Donations, \$ 10/family or \$ 2.50/person, will help pay production costs to finish the series. DAY IS DONE is a production of ART FORMS Inc., a non-profit, arts promoting organization.

ASUU PRESENTS

ARTURO SANDOVAL

KRCL 91 FM

Cosponsored by the public radio stations of SLC



Tickets available at Kingsbury
And all SmithTix locations
Admission \$14, Students \$10

FRIDAY, NOVEMBER 13,
8:00 P.M. KINGSBURY HALL

WORLD'S MOST AMAZING TRUMPET PLAYER