

KRCL
PROGRAM GUIDE



91 FM
DECEMBER 1994

**V
O
I
C
E
S**



*Special
Fifteenth
Anniversary
Issue*

Volunteers: Lelanie Pickett Abalos, Rob Baker, Charles Bates, Dan Benaducci, Tom Blackwood, Randy Block, Bill Boyd, Chuck Bradley, Deena Brazy, Keith Browning, Earl Burnett III, Greg Campbell, Mark Cantor, Rebecca Chavez-Houck, Alan Chow, Mike Christy, Jonathan Cloud, Stacey Cole, Steve Connor, Brian Crockett, Cynthia Davis, Babs DeLay, Pat Dell, Anjali Deshpande, Lance Drummond, Kim Duffin, David Dyer, Jim Elder, Helene Elbien, Bruce Engelhard, Mike Evans, Yan Fang-Magnusson, Victor Fernandez, Nancy Fillat, Ellen Fischer, Bob Flinger, Rex Flinger, Doc Floor, Ann Floor, Kevin Florendo, Bobi Fox, Tami Fraser, Jeff Freedman, Patty Giffin, Jimmy Hamamoto, Ebay Hamilton, Mark Hampton, Bernice Halladay, Kristina Handy, Brian Hansen, Doug Harding, Lonna Henriquez, Dung Hoang, Tony Hodges, Marc Hoenig, Scott Howard, Carlie Jimenez, Laura Johnson, Tom Johnson, Shea Kapos, Glenn Keister, Brian Kelm, Uma Khandkar, Susan Kies, Jeff Kimball, Bill Komlos, Phil Lanouette, Deborah Levine, Y. Lin, Ronald Liszkowski, Dylan Mace, Lisa Mace, Jorge Malca, Mike Marchetti, Lee Martinez, Cissy McAndrew, Lynn McCue-Hamilton, Dean Mednick, Chiedu Megwalu, Craig Miller, Suzanne Milsap, Maureen Mooney, Richard Moore, Joseph Moratalla, Becky Moss, Tekehu Munanui, Dan Nailen, Robert Nelson, Les Nilsson, Charlene Orchard, Max Packineau, Ken Pavia, Ann Pineda, Tony Polychronis, Betsy Quintana, Bill Ramsey, Linda Reeder, John Reese, Mary Lou Reitz, John Rokich, Lisa Romano, Gerry Runyan, Helen Salas, Jeff Salt, Dave Santivasi, Marilyn Scharine, Richard Scharine, Jerry Schmidt, Steve Seftel, Ellen Selu, Wayne Selu, Myron "Buzz" Simon, Robin Simper, Sam Smith, Victoria Smith, Rick Stayner, Jodi Stewart-Browning, Ken Sullivan, Jim Sutteet, Danny Tapeta, Marlena Lambert Tempest, Bruce Thomas, Gary Timm, J.R. Torina, David Turner, Joel Uluakiola, Nancy Valdez, Matthew Wallace, Susan Weisenberg, Jeff Williams, Jo Wilson, Leslie Wold, Truman Wold, Diane Winter.

READING

DECEMBER, FRIDAYS 12 NOON

Don't miss

"A Circle of Nations:

Voices and Visions of American Indians"

Writers include: Leslie Marmon Silko, Joy Harjo, Simon Ortiz, Linda Hogan, Debra Calling Thunder, Mark Trahant, Elizabeth Woody, Luci Tapahonso and Paula Gunn Allen.

The readings will be every Friday throughout the month of December at 12 Noon. Readers are: Joy Harjo and Simon Ortiz.

Made possible by Audio Literature, based on the book of the same name, "A Circle of Nations."

KRCL Staff

David Young, *General Manager*
Donna Land Maldonado, *Program Dir.*
Lewis Downey, *Chief Engineer*
Kris Liszkowski, *Development Director*
Paula Rokich, *Business Manager*
Tristin Tabish, *Membership Coordinator*
Bill Boyd, *Music Coordinator*
Jackie Farnsworth, *Intern*

KRCL Board of Trustees

Lisa Mace, *Vice Chair/Vol. Rep.*
Fran Pruyun, *Secretary*
Tom Blackwood, *Treasurer/Vol. Rep.*
David Young, *President*
Howard Lundgren, *Board Member*
Stephen Holbrook, *Board Member*
Paul Wharton, *Board Member*
Letitia Archuleta, *Board Member*
Robert Flores, *Board Member*
Tamara Taylor, *Board Member*
Russ Hagood, *Board Member*
Jo-Ann Wong Kilpatrick, *Board Member*
Chris Gittens, *Board Member*
Jerry Schmidt, *Volunteer Representative*

KRCL's Board meetings are open to the public. The next board meeting is December 8th, 5:30 pm., at the station.

Community Advisory Board

Kathy Brooks, *CAB Member*
Paul Frisby, *CAB Member*
Jim Gonzales, *CAB Member*
Debbie Rocha, *CAB Member*
Tona Treetop, *CAB Member*

Voices is designed and produced by Kerman Design.



Graywhale CD

CD's under \$10
Salt Lake City,
Ogden, Provo, Logan
583-9626

LETTERS

KRCL welcomes comments and opinions from its listeners and will print all signed letters. KRCL reserves the right to edit offensive or inappropriate language.

Dear Riversong (KRCL),

Your fundraiser is approaching and I'll miss it. I'll be in Malaysian Borneo, supervising a scientific research project on rainforest restoration after logging. I'll miss your tunes, but will have the hoots of gibbons and the "six o'clock cicadas" as compensation.

A bit over five years ago, my activities were cut back severely by illness when I came down with CFIDS (Chronic Fatigue Immune Dysfunction Syndrome). The disease is worsened by stress and helped by serenity and moderate exercise—though it is a lifetime illness with no other known treatment. Thankfully, I've "recovered" to the extent that I can work again, due in large part to swimming (moderate exercise) and Nexus (serenity).

I want to thank you for your contribution to making my life whole again. You introduced me to the music I now play each day to help temper stress. I know I owe you more than this small donation, but I give to numerous other organizations too. I hope these words of thanks will help you realize how important you and your music are to your

listeners, and how grateful we are for the gifts you send us each week.

Dinah Davidson

KRCL,

KRCL's programming—both of music and special features—are diverse and satisfying. In the past I have contributed to KRCL. But I have felt, and still feel, at odds with KRCL's direct sponsorship of the gay and lesbian movement.

Ambivalently,
Cory Fehlberg

KRCL,

While making the most of my prison experience, I have come to appreciate such KRCL programs as Variables, the early morning Breakfast Jams, and the programming concerning women. Unfortunately, I find myself without a KRCL program schedule.

Any assistance will be greatly appreciated.

Will

Dear KRCL,

The Folk Arts Program staff and the Utah Arts Council thank you for your participation in the 1994 Mondays in the Park Concert Series which featured American Indian/Native American artists and traditions. KRCL's co-sponsorship was very important to the success of the series.

We realize your program "Living the Circle of Life" is one of the best ways to provide information to Utah's diverse Indian community, and your program guide listing and numerous public service announcements made the information available to the greater listening audience, con-

Our Listeners Talk Back

tributing to the exceptional attendance at each of the concerts. Donna, thank you for welcoming the audience at the final concert and for providing a personal connection between the station, the audience, and the performers.

The goal of this concert series was to present a sampling of the depth and diversity of American Indian culture in Utah and we featured some very exceptional performances ranging from traditions usually seen only on the reservation to contemporary expressions of Indian culture representative of Utah's urban intertribal community.

Even though the series focused on performances of music and dance, the staff and participants took great care to educate as well as entertain the audiences. Important issues were addressed by many voices and the quality of the presentations were evident by the increase in audience attendance each week, culminating in the largest crowd ever seen at a Mondays in the Park concert.

The general public thirsts for an understanding of Utah's American Indian heritage. Thank you for supporting diverse programming and for helping us bring cultural opportunities to large numbers of Utahns.

KRCL's support was acknowledged at each concert and in promotional flyers, copies enclosed.

The staff at the Folk Arts Program looks forward to working with you again on one of our many projects designed to

continued on page 4

NOW featuring UTAH GROWN fruits & veggies

LIBERTY HEIGHTS FRESH

1300 South 1100 East
467-2434

By Dave Young

KRCL won the Third Annual Downtown Alliance award in the category of Media. Each year, the Downtown Alliance recognizes superior accomplishments and achievements in downtown Salt Lake City during their annual awards program. Businesses, organizations, individuals and projects are nominated by the public to receive recognition for improvements to downtown that make a significant contribution to, or further enhance Salt Lake City's economic, cultural, social or physical well-being.

The finalists nominated in the Media category were: Brooke Adams (Deseret News) Jack Goodman (Tribune) KISN Radio (Lights On) KRCL Radio (Twilight Concert Series) KTVX TV (First Night) Salt Lake Tribune John Saltas (Private Eye Weekly)

KRCL was nominated for its continuing participa-

tion in the Twilight Concert Series. This year (as in past years) KRCL was the radio sponsor. In past years, KRCL has also broadcast live several concerts from each series. This year, for the first time ever KRCL broadcast live the entire series! The weekly Thursday night program was very popular whether you heard it on 91FM or at the Gallivan Utah Center.

Special thanks goes to KRCL's Chief Engineer Lewis Downey. Lewis is the leading advocate for live broadcasts on KRCL. He oversees the broadcasts and is also in charge of recruiting, training and coordinating additional help. On site engineers were Rob Snow, Bill Ramsey, and Jeff Kimball. Studio engineers Dave Santivasi and friends. Gallivan Utah Center assistance provided by Toni Geddes, Barbara McRae, Carole Quilter, Chris Bamberger. The series was produced by Casey Jarman of the Salt Lake City Arts Council, Nancy Boskoff, Director. Thanks to all of these people for their hard work and dedication.

LETTERS *continued from page 3*

encourage the appreciation and preservation of traditional culture in Utah.

Sincerely,
Craig R. Miller
Folk Arts Program

KRCL,

Attached is my donation so I can tune you out during Radiothon! I still love all the folk, womens, drives, breakfast jams—and everything really—but my heart goes out to Max, Living the Circle of Life! What a great laugh! It's my Sunday morning spiritual experience!!

XOXO to Max!
Holly

To Whom it May Concern,

My name is Kevin McMahon and I am an inmate at the Utah State Prison. The reason I am writing is to tell you how much I enjoy your radio station. Ever since I

found it three months ago, it's all I listen to.

I would like to request a program schedule and a list of who hosts them if that is possible. I would like to send them some personal "thank you" cards for making my time a little easier.

Thank you, peace!
Kevin

KRCL,

I appreciate much of what you do, but I am still thinking about whether I can justify supporting the station. Here's why:

The devotion to huge blocks of program time to women's issues is hypocritical and ludicrous (six hours in prime-time). I have nothing against this whining, but believe the focus should be on "human" issues, not women's issues. For example, even though prostate cancer kills about the same number of men as breast cancer does

women, \$210 million more is spent each year on breast cancer research. Who says it's a man's world?

Low-paid dead-end jobs are more often held by men—and they (the jobs) are exceedingly more dangerous. Men work harder and longer so women can verbalize their problems and listen to women's programs. Where's the equity here? I believe there are many common human issues and that most women's issues are only women-focused because women believe they control the market on sensibility, "the" way to verbalize emotions, and can whine so much better. Let's have some balance.

Rob Jones



What were you doing
December 3, 1979 at 3 PM?

KRCL WAS MAKING HISTORY!



Join KRCL on December 3rd at 3:00 p.m. and re-live the momentous first sounds of Krackle Radio, KRCL. We will rebroadcast the historic first half-hour at this time.

Also, starting on this date, "flash backs" of the past 15 YEARS.

Do you have some sound bites you'd like to share with the other listeners??

Bring or send them to KRCL . . . we'll be doing the memory moment thing for the whole year.



DECEMBER 3
AT 3:00 PM

by Kris Liszkowski

Congratulations and thank you! Congratulations, because YOU were part of KRCL's fall Radiothon. Thank you, because KRCL couldn't have done it without you. The staff, volunteers, board and KRCL listening community collectively raised \$89,201!!! This is the highest raising fund drive to date in KRCL's history. Your help made all the difference in the outcome, and KRCL hopes you take as much pride in the results as we do!

As the Development Director, I am often asked what exactly enhanced the fund drive? Radiothon unfolds like a good mystery, yet the fund drive is a direct reflection of how KRCL performs as "Your Community Connection"...

Radiothon begins 2-1/2 months before the fundraisers go on air, with detailed thought, planning and preparation. Two weeks before the commencement of Radiothon, staff and volunteers alike are working *non-stop* to prepare for the fundraiser.

Then, KABOOOOO! Radiothon begins! The programmers and fundraisers begin by asking a simple question: Does this community still want

KRCL? And, if so, will you "Cultivate Your Community Connection?" Ten days later, through laughter and sometimes...tears...KRCL receives the answer. This Radiothon, the answer was a definite, resounding, resonating YES!!!

The community of the Wasatch Front, Park City and Moab desperately need a radio outlet precious and unique as KRCL. KRCL's objective is to go beyond standard music and news functions of most radio stations.

The bi-annual fundraiser is very exciting. It gives the volunteers, staff, board and the KRCL listening community the opportunity to work together as a team towards one radio station of many voices and causes. The end result, \$89,201, ensures the financial stability of KRCL radio for six more months.

When we all work together, KRCL and the listening community can perform *magic*. For this, thank you. Thanks for Cultivating YOUR Community Connection, KRCL 91FM, 96.5 in Park City, and 89.7 KZMU in Moab.



Winter is the best time
to buy a home...
really! Why?

Going through homes when it's cold outside gives you a better idea of how that home has been cared for over the years. For example, are their any drafts because the doors and windows don't fit? Does the heat system make noise? Does there appear to be an ice dam up along the eaves? And, there may be more bargains in the Winter!

Call me when you want to find a home.

HAVE A WARM AND HAPPY HOLIDAYS!



Babs De Lay
Associate Broker
467-2100

Lewis Wolcott
& **Dornbush**
REAL ESTATE

bike board blade
555

OUR NEW LIBERTY PARK LOCATION!
703 EAST 1700 SOUTH
801 / 561-2626 FAX 561-2666



By Donna Land Maldonado

Congratulations, KRCL radio activists! Your community radio station is fifteen years in existence on December 3rd. Through dreams, work, creativity and persistence our community station, KRCL, is an important attribute in this beautiful landscape of ours.

It doesn't seem like yesterday—but, it doesn't feel like it's been a decade and a half. We've traveled quite a distance together—experiencing some rough growing pains as well as some really good radio; barely getting by with the thinnest of resources to overflowing with an abundance of creativity.

Through the whirlwind of time, from President Carter in 1979 to Reagan, Bush and now Clinton—we have survived and remain guided by our mission: to serve the disenfranchised, to give voice to those traditionally (and still being) denied, to give access to the community served. The quest is not easy, not has it been . . . if KRCL were to become complacent, the mission would, either, be completed or it took the path of least resistance and no longer needed. Through your voice as a listener, volunteer or supporter, we know that neither is true. There continues to be a great diversity of opinions and an even greater number of voices

that lack access, in any forum, for their perspectives as defined by them. Who would've 'thunk' this humble little station, founded by a Vietnam war resister, would grow to be a valued institution in our lives? KRCL is truly a dream come true: we can hear different ethnic voices and music, different perspectives on the world news, what a local organization is doing to preserve our quality of life, where to go for assistance, what small venues for entertainment are and where, a place where you can hear a voice and opinion like your own—a validation of self. I guess there's no need to say, KRCL is still a need and a want for those of us that walk to the beat of a different drum with pride and rejoice in the diversity within our community. Thank you, Steve Holbrook and Paul Wharton, founder and legal compadre, you have given reason, hope and faith to far many people than you'll ever realize; through your vision and wisdom, KRCL's mission remains valid and a gentle guiding force into the future.

Respectfully,
Donna

CounterSpin

Tired of Tweedle-dee, Tweedle-dum Reporting?
Tune into CounterSpin

A weekly radio show produced by FAIR, the national media watch group, *CounterSpin* exposes and highlights:

- ❖ biased and inaccurate news
- ❖ key censored stories
- ❖ press/state cronyism
- ❖ disinformation, propaganda and spin control
- ❖ interference by corporate sponsors and owners
- ❖ the growing media clout of right-wing fundamentalists
- ❖ gaffes and goofs by America's leading TV pundits
- ❖ sexist and racist media assumptions
- ❖ the corporate take-over of public television
- ❖ attacks on free speech in the music, entertainment and news industries
- ❖ tough, independent journalism that cuts against the media grain

On Community Radio, KRCL
Thursdays 5:30 pm

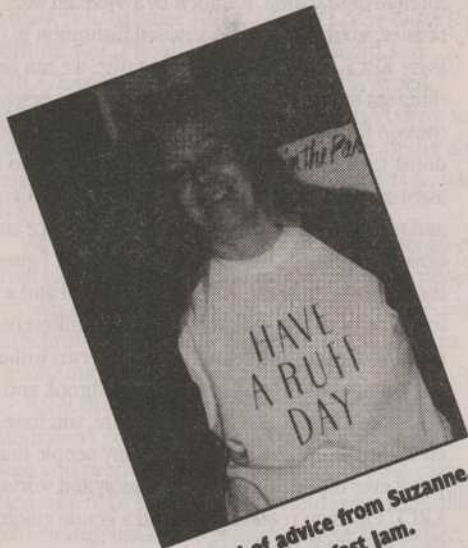
"GIVING THANKS—
A Way of Life"

THURSDAY,
NOVEMBER 24, 12-1 PM

President Lincoln codified Thanksgiving as a national event in 1863; this program discusses the holiday's history and how Native Americans retain its meaning.

Produced by the
Superior Radio Network

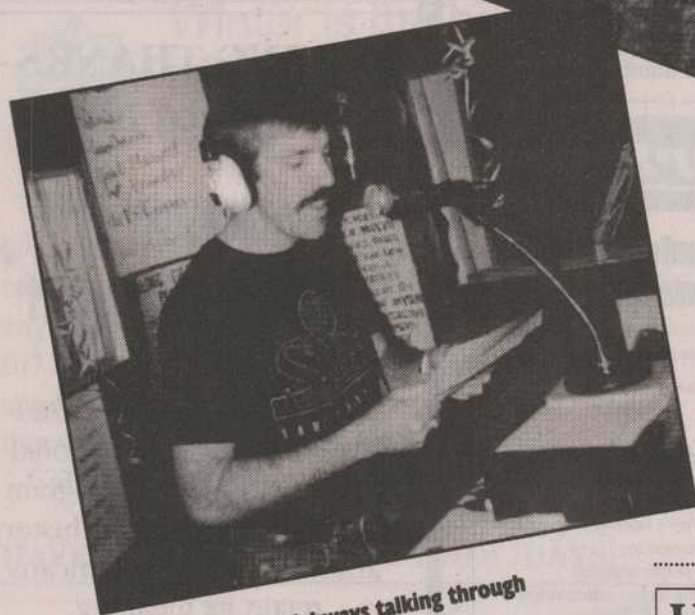
RADIOTHON '94



A word of advice from Suzanne, Thursday Breakfast jam.



Jo Wilson of Saturday Breakfast jam. Expressing where this Radiothon poster should go!



Truman, of Blue Highways talking through KRCL airwaves.

US Voice Mail



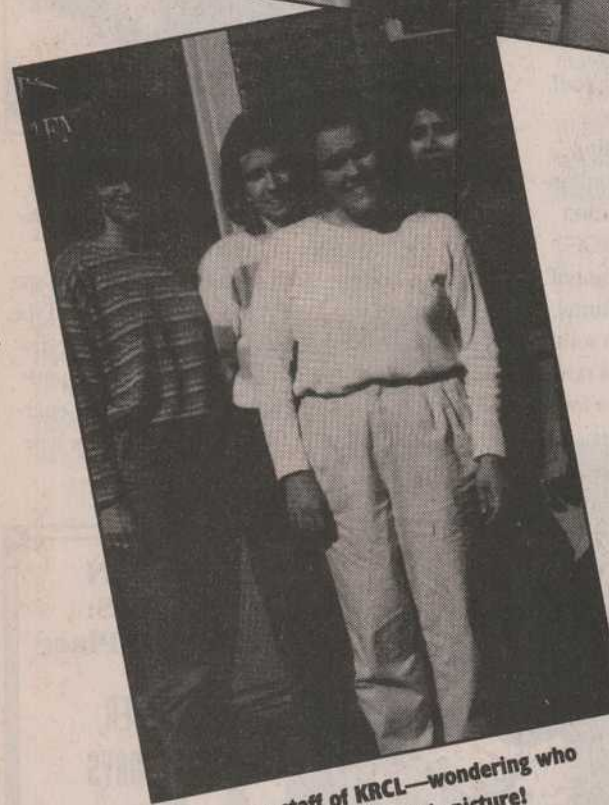
A completely private messaging system that makes you available 24 hours a day

FOR A FREE 10-DAY TRIAL CALL

350-2049

450 S. 900 E. #110, SLC, UT

The finale of Fall Radiothon '94! KRCL volunteers, staff and the greater listening audience anxiously await the results—\$89,201!



The women staff of KRCL—wondering who tricked them into taking this picture! Kris Liszkowski, Paula Rokich, Tristin Tabish, Donna Land.



David Young, showing the youngest volunteer of KRCL, Mackenzie, around the station.

guitars mandolins fiddles books, kits

banjos hand-made instruments accessories

Master Craftsmen Rentals Lessons

712 EAST FIRST SOUTH, SALT LAKE CITY, UT 84102

(801) 322-4682

10 AM - 6 PM, MONDAY thru SATURDAY

Tune in the "Mighty 91" for... THE

Blue Devils Blues Revue

- THE FEATURE EDITION -

BROADCAST LIVE THE LAST MONDAY OF EACH MONTH 9-11 p.m. on KRCL

DEAD DOGS

from the **W-S-BROOD**


By Fran Pruyn, KRCL Board of Trustees

Late last month, Kate Kendell left her position as staff attorney of the American Civil Liberties Union of Utah to become the legal director of the National Center for Lesbian Rights, headquartered in San Francisco. For Kate, leaving Salt Lake also meant leaving KRCL, where she served as the Chair of the Board for the past two years. We will certainly miss her. Under her leadership, the board made significant strides toward organizing itself to be a vehicle that will steer the station into technocrazy 21st Century. Kate helped plan and organize the first KRCL Leadership Group Planning Session. This retreat, which board, staff, and volunteers attended, was a critical move toward defining the role of the board, creating shared goals, and improving inter-station communication methods. Kate's presence at the station helped unify our factionalized goals. She has a good word for everyone, an ear for every point of view. Kate is articulate, approachable, and funny. She is a diplomat, facilitator, and a problem solver. She almost always has time for you, and, as a result, is generally overextended. This is a big move for Kate. It took courage to make such a resolute career choice. It took courage to leave her life-long



Utah home. And, let me tell you, it took courage after years of high-profile media exposure, to *come out* on the front page of the local section of the Salt Lake Tribune. Kate once told me she is a Type B personality in a Type A job. For KRCL, that Type B personality has been a very good catalyst for discussion and growth. On behalf of the station and its listeners, thank you Kate Kendell for your energy and time and care. Good luck in your new type AAA job.


THE
Salt Lake
Roasting
Co. & Cafe
320 East 400 South Salt Lake City


Circle Pottery
Studio • Gallery • Classes • Supplies
Fine Quality Stoneware
Hand-made On-site
By Don MacDonald
with emphasis on
Affordable, Functional Pottery
232 East 800 South, SLC
596-1350



Mountain Biking?
We Do It! It's that simple.

Wild Rose
702 Third Ave.
533-8671

WESTERN
WRITERS:
A Sense of Place

DECEMBER,
WEDNESDAYS
11 AM

Five minute pieces,
that will include
Wallace Stegner,
Denise Chavez, Kathleen
Norris and David Romvet,
will be presented at
Le Cafe Folk
during the month of
December at 11 a.m.

By Dave Young

Yahoo Yippee Yi Yay!

What sex is to a relationship, Radiothon is to the social conscience of our community. Given the huge final total for Radiothon, \$89,201, nearly a 10% jump from all previous totals, I'd say our community is pretty healthy. It feels so good to be a part of KRCL!

Just when you think cynicism has won out and the great hope we all have for a better world has completely disappeared what happens? That kind and hopeful spirit rises up with in us, a whole bunch of us, and we make something beautiful happen. The result is elevating for our whole community.

What a hopeful sign for KRCL and our community as we begin to celebrate our 15th anniversary. The first 15 years have been a good warm up exercise for things to come.

Many believe that this is a critical time in human existence. That in the next 20 years we will either make it or brake it. We will either get a handle on the earth shattering problems that abound or be consumed by them. Some believe these problems are already beyond our control, at least beyond any methods we have employed to date.

Maybe that's the point. For humankind to face

problems that go beyond the abilities of our mind. To force us to rekindle our spirits or be exterminated. What a climax for the 20th Century. The ultimate motivation for humankind's biggest challenge.

KRCL is a living tribute, a small demonstration of what can be when we unite our spirits for the good of humankind. I am certain of 2 things: uniting our spirits on a global scale would be sufficient to the task of saving our world, and; that KRCL will be in the thick of things.


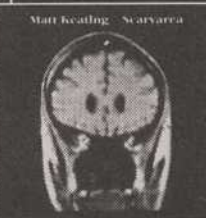

KRCL will be here, furthering our connection to the world so we can think globally. But more importantly KRCL will be here providing the avenues to act locally.

 Foothill
ORIENTAL RUGS

1464 FOOTHILL DRIVE

(801) 582-3500


KRCL 15 YEARS
EXPLORING COMMUNITY


"In the lofty company of Freedy Johnston and Matthew Sweet"
-Hits Magazine
Matt Keating - Scaryarea

Scaryarea.
The new album from
Matt Keating.
available at your
local record store.
Also available:
Tell It To Yourself

Alias Records.
2815 West Olive Avenue,
Burbank CA, 91505

	SUNDAY	MONDAY	TUESDAY	WEDNESDAY	THURSDAY	FRIDAY	SATURDAY	
5:30 AM	SONIC SLAUGHTERHOUSE with J.R. Torina	MORNING LIGHT					NOCTURNAL EMISSIONS with Dan and Mike	5:30
6:00								6:00
7:00	MORNING LIGHT	BREAKFAST JAM <i>Acoustic, folk and acoustic rock</i>					SANGEET MALAR with Uma Khandkar & Anjali Deshpande	7:00
8:00	LIVING THE CIRCLE OF LIFE with Max Packineau						with Jodi Stewart-Browning and Keith Browning	with Matthew
9:00							BREAKFAST JAM with Jo Wilson	9:00
10:00		TOUCH THE EARTH with Kevin Florendo	WOMEN OR NOTHING with Cynthia Davis, Tami Fraser or Cissy McAndrew	LE CAFE FOLK with Donna	WOMEN: THE SECOND DECADE with Babs DeLay	RHYTHM TRAXX with Jonathan Cloud		10:00
11:00	SUNDAY SAGEBRUSH SERENADE with alternating hosts Phil Lanouette and Rick Stayner						SATURDAY SAGEBRUSH SERENADE with John	11:00
12:00		READING						12:00
1:00 PM		OUR ARTS	PEOPLE'S BUSINESS	CONCERNING GAYS & LESBIANS	LUNCH ENCOUNTER	LA VOZ DE LA GENTE		1:00
2:00		GLOBAL GUMBO with Steve Seftel	GLOBAL GUMBO with Craig Miller	GLOBAL GUMBO with Chiedu Megwalu	GLOBAL GUMBO with Greg Campbell	ELEMENTS OF SOUL with Earl B.	WAKE UP CALL with Dave Sieger	2:00
3:00	BLUEGRASS EXPRESS with Bob and Rex Flinger and 'The Old Man'	DRIVE TIME <i>Rock, blues, folk, reggae and World Beat</i>						3:00
4:00							with Lonna	with Steve
5:00	RIDERS RADIO THEATER	PACIFICA NEWS					SMILE JAMAICA with Robert Nelson	5:00
6:00	FRET N' FIDDLE with Lewis Downey or Mark Cantor	SOUND TRACK '91						6:00
7:00	NEW DIMENSIONS	ASIAN CHIMES: RADIO PHILIPINO	ASIAN CHIMES: VOICE OF POLYNESIA	ASIAN CHIMES: CHINESE RADIO	ASIAN CHIMES: VOICE OF VIETNAMESE	S.O.A.P. with Sam Smith	LISTENER'S CHOICE	7:00
8:00								8:00
9:00	NEXUS with Riversong	RED, WHITE AND BLUES with JR Rokich	RADIO TROPICAL with Nancy Fillat	ROOTS RAGGA REGGAE with Ken Quail	AURAL DECAY with Dave S.	RAPP ATTACK with DJ Buzz	STATIC RADIO with Tristin	9:00
10:00								10:00
11:00	VARIABLES with Scott Howard	BLUE HIGHWAYS with Truman	RADIO BEMBA with Coqui	WHITE ROOTS with Papa Pilgrim	PERPETUAL CHANGE with Otis	POETIC INJUSTICE with Ken Sullivan		11:00
12:00							BEHIND THE ZION CURTAIN	12:00
1:00 AM	AUDIO SYNERGY with Bobi Fox	TOTAL HARMONIC DISTORTION with Alan	SEREMOUS ROPES with Richard	MIDNIGHT LIGHT with Ebay	DYER'S EVE with Dave Dyer	TO HELL AND BACK with Les Nilson		1:00
2:00								2:00
3:00	ABSOLUTE ELSEWHERE with Brian	IN THE EXTREMIS with Brian	BUTTON HOLE RADIO with Charles Bates	GLOBAL GROOVES with Randy Block	MUSIC FOR YOUR EARS with Tony Hodges	NOCTURNAL EMISSIONS with Dan	SONIC SLAUGHTERHOUSE with JR Torina	3:00
4:00								4:00
5:00								5:00

Public Affairs

Morning Light

SUNDAYS 6:30AM

"Crossroads," Achievements, issues and stories presented from a culturally different perspective.

MONDAYS 5:30AM

"Unconventional Wisdom: Debating U.S. Foreign Policy."

TUESDAYS 5:30AM

"Common Ground," a look and discussion of global affairs, produced by the Stanley Foundation.

WEDNESDAYS 5:30AM

Repeats of different public affairs programs, plus W.I.N.G.S. once a month.

THURSDAYS 5:30AM

"CounterSpin," produced by FAIR, Fairness & Accuracy In Reporting, the national media watch group based in New York. Hosted by Laura Flanders and Martin A. Lee.

**ACOUSTIC
MUSIC**



Come on in!
We have three
rooms full of
guitars!

857 E. 400 S. - 531-7066



**BLUE
BOUTIQUE**

FUTONS & FRAMES
Environmentally Safe Wood

2100 South 1100 East
S.L.C. UT.
485-2072

FRIDAYS 5:30 AM

High Plains News or National Native News.

Riders Radio Theater

SUNDAY 5:00PM

New age cowpoke humor, zaniness and cowboy music by Riders in the Sky.

New Dimensions

SUNDAY 7:00 PM

A timeless and relevant interview series particularly well suited for the "inner directed" audience. Hosted by Michael Toms.

NOV 13: "The Blessings of Mourning" with Anne Brener, who unfolds a unique perspective on grieving and mourning. She draws from the Jewish tradition to offer tools for healing for current grief and even long ago losses that we have not fully processed. #2453

NOV 20: "Earth Community in Ireland" with attendees of the more than 1,500 people who gather for the 13th International Transpersonal Association Conference. #2477

NOV 27: "Apprentice to a Mayan Healer" with Rosita Arvigo, who became an apprentice to the May healer, Don Elijo Panti of Belize. She reminds us of the undiscovered natural wealth that is in danger of being lost. #2465

**NIZHONI TRADING
COMPANY**



INDIAN HANDMADE
JEWELRY, POTTERY
KACHINAS, MUSIC
FTC. 262-7345

FASHION PLACE MALL
6194 S. STATE, MURRAY, UTAH

DEC 4: "Dialogues with Sir Laurens Van Der Post: A Mythic Journey." Part I. From his home in London, this rare and fascinating series of talks with one of the giants of the 20th century, who has been an adventurer, soldier, statesman, writer and philosopher. #2473

DEC 11: Part 2, with Sir Laurens Van Der Post, who addresses the major issues of our time and the results are riveting. #2474

DEC 18: "A Mythic Journey," with Sir Laurens Van Der Post, part 3. This program includes an interview with Jane Bedford, Sir Lauren's longtime assistant. #2475

DEC 25: "Thomas Merton Remembered." On the 25th anniversary of Merton's untimely death in Bangkok, Michael Toms talks with several people who knew the great theologian and writer. #2476

JAN 1: "Life Magic Through Neurolinguist Programming (NLP)," with Connierae Andreas. NLP incorporates diverse techniques of personal development in a flexible, intuitive approach for bringing deep personal change. #2464

Reading

WEEKDAYS 12:00 PM

Short stories, novels and/or essays read by a variety of readers from a variety of different sources.

Our Arts

MONDAYS 12:30 PM

Interviews with local or visiting artists. Produced by alternating hosts: Stacey Cole, Brian Crockett, Kim Duffin, Helene Elbein, Carleen Jimenez, Betsy Quintana, Mary Low Reitz, and Marilyn Scharine.

NOV 14: Community of Writers: Squaw Valley, 1994

NOV 21: Marilyn meets newcomer, Chris Quinn, of Westminster to discuss the music series at the college.

NOV 28: Kim and Kathy Dansie, a local marketing consultant, will discuss the current visual arts market; a member of the S.L. Gallery Association will highlight the annual holiday gallery stroll on Friday, Dec 2.

DEC 5: "Mother Poems and Other Poems" Mary Lou interviews Carla Eskelsen.

DEC 12: Brian and Ann Hannibal, past president of the Utah Museum Association, discuss ambitions and obstacles facing the Utah museum community.

DEC 19: Art is Kid *Smart*. Helene and guests discuss the value gained in educational art programs, the ones on the endangered budget lists.

DEC 26: Betsy Quintana and Tay Haines will highlight the programs

available to artists in the new resource center to be housed at the Union Pacific Depot.

People's Business

TUESDAYS 12:30PM

Discussions on community and social concerns. The first Tuesday of each month, the Utah ACLU gives an update of civil concerns with host Lynne McCue Hamilton. Robyn Simper hosts the second Tuesday, with various hosts and guests the other days.

Concerning Gays and Lesbians

WEDNESDAYS 12:30PM

News and information from Utah's gay and lesbian population.

Lunch Encounter

THURSDAYS 12:30PM

DEC 1: Museum Notes

Host Marlena Lambert Tempest, Education Curator, Utah Museum of Natural History, explores the natural world with various guests.

DEC 8: Utah Issues

Host Bill Walsh, Director of Utah Issues, focuses on the social concerns of Utah.

**COSMIC
AEROPLANE
COSMIC
AEROPLANE
COSMIC
AEROPLANE**

1300 SOUTH 900 EAST
487-9505

HOURS: M-F 11-7; SA 10-6; SU 12-5

DEC 15: Senior Sound Off

Host David Turner, Division of Aging Services, talks with and about the older population.

DEC 22: Not Just Jello

Live conversations about contemporary Mormonism.

DEC 29: To be announced

La Voz de la Gente

FRIDAYS 12:30PM

Guests talk with Rebecca Chavez-Houck and Lee Martinez about the topics of advocacy, service, information, political and cultural concerns...of and about Utah's Hispanic population.

Pacifica News

WEEKDAYS 6:00PM

National and international news from an alternative point of view. Produced by the National Pacifica News Department.

Sound Track '91

MONDAYS 6:30PM: Local and National Public Affairs on Women

Political and social issues of particular concern to women.

TUESDAYS 6:30PM: Latino USA

The Radio Journal of news and culture for the Latin population in English.

USDC Inspected
FRESH Seafood at

Dan's

Now open
seven days a week!

WEDNESDAYS 6:30PM:

In The Opinion Of...

A local production on issues of today from a local perspective.

THURSDAYS 6:30PM: **Borderlands**

Part 1: The People A historic look at new residents and the indigenous peoples of the area. *Part 2: The Culture* Native American tradition, Old Mexico and live in the Sunbelt. Culture clash in the border cities, and the rise of Southwestern art. *Part 3: The Region* Desert Biosphere reserves, bombing ranges, land use and water management. *Part 4: The Money* The proposed "Free Trade Highway," doing business along la Frontera, the predictions and promise of NAFTA.

FRIDAYS 6:30PM: **Crossroads**

Achievements, issues and stories presented from a culturally different perspective.

Short FeaturesMONDAYS 7:30AM: **Arboretum Report**MONDAYS 5:00PM: **Southern Utah Wilderness Alliance Update**TUESDAYS 10:00AM: **Women's News**TUESDAYS 11:30AM: **Because We're Here**TUESDAYS 5:00PM: **Environmental Update**WED 12:55PM: **Because We're Here**WEDNESDAYS 5:00PM: **High Plains News**THURSDAYS 10:00AM: **Women's News**THURSDAYS 11:30AM: **Women of History**

WASATCH DESIGN Co.

makers of custom ski wear
• original casual wear •
• alteration & repair •
4679 S. Holladay Blvd, SLC
277-4547

FRI 5:00PM: **Along the Color Line**SUNDAYS 9:57AM: **Environmental Update**DAILY 5:30 AND 10:00PM: **Stardate**WEEKDAYS 7:00AM AND 2:53PM: **Earth and Sky**WEEKDAYS 6:28PM: **Letters to the Editor****Blues R&B**

MONDAYS 8 PM

Red, White, and Blues

Explore the wide variety of this distinctively American musical form, with a smattering of its offspring. J.R. Rokich hosts.

MONDAYS 9:00 PM **KRCL Presents Live Blues Broadcasts**

Last Monday of each month at the Dead Goat Saloon.

MONDAYS 10:30 PM **Blue Highways**

Truman brings you electric blues, from the sixties to the hottest artists now on tour. Tune in for the best in soulful guitar, harmonica and horns.

Gardiner Distributing
554 West 100 South
Salt Lake City, Utah 84101

Mount Olympus Spring Water

1825 So. 3730 W
Salt Lake City

WEDNESDAYS 3:00 PM **Drive Time**

Rock, blues, folk, reggae, and more with host Mike.

THURSDAYS 9 AM **Women: The Second Decade**

Babs DeLay shares the accomplishments of women from the 1920's to the 1990's. Women's News, Rape Crisis Report, and specials on women in history.

Ethnic/WorldSUNDAYS 7 AM **Living the Circle of Life**

Native American music, news and information with host Max Packineau. National Native News airs at 8:30 am.

MONDAYS 1 PM **Global Gumbo**

An entertaining as well as educational experience from Afro-beat—Zouk, including the 3 R's: Rumba, Rapso, and Rara. With your host Steven Seftel.

MONDAYS 7 PM **Asian Chimes: Radio Pilipino**

Experience the Philippines—their music and news. Keep up with the latest "Pinoy" happenings. Hosts Vic Fernandez and Joseph Moratalla.

TUESDAYS 1 PM **Global Gumbo**

Music from around the globe. Hosted by Craig Miller.

TUESDAYS 7 PM **Asian Chimes: Voice of Polynesia**

Music from Samoa, Tonga, Tahiti, and other Pacific Islands with alternating hosts—Wayne and Ellen Selu, Joel Uluakiola, and Danny Tapeta.

TUESDAYS 8 PM **Radio Tropical**

Bossa Nova, Merengue, Cumbia, Latin Jazz and more sounds of Central and South America, hosted by Nancy Fillat.

TUESDAYS 10:30 PM **Radio Bemba**

Music from the Caribbean, Central,

and South America continues, featuring Salsa, Merengue, Cumbia and more with host Coqui.

WEDNESDAYS 1 PM **Global Gumbo**

Music from around the globe with Cheidu Megwalu.

THURSDAYS 3:30 PM **Global Grooves**

With Randy Block.

THURSDAYS 1 PM **Global Gumbo**

Musical jaunts around the globe, set to break all barriers with Greg Campbell.

THURSDAYS 7 PM **Asian Chimes: Voice of Vietnamese**

With host Dung Hoang.

SATURDAYS 7 AM **Sangeet Malar**

From the subcontinent hosted by Uma Khandkar and Anjali Deshpande.

Folk/BluegrassSUNDAYS 10 AM **Sagebrush Serenade**

Music to ease you from your morning cup through your Sunday afternoon. Folk and rock with a country flavor with alternating hosts Phil Lanouette and Rick Stayner.

SUNDAYS 2 PM **Bluegrass Express**

Join Bob and Matt Flinner and "The Old Man" for the best in bluegrass; music that is at the root of country and folk tunes popular today.

SUNDAYS 5:30 PM **Fret 'N' Fiddle**

... from the campfires of the 1840's to the honky tonks of the 1940's ... with your hosts Lewis Downey or Mike Evans, or Mark Cantor who presents British Isle sounds.

MON-FRI 6 AM **Breakfast Jam**

A savory blend of acoustic, folk, and bluegrass tunes stirred up with various hosts. A pleasant start to your day

TUESDAYS 9 AM **Women or Nothing**

Cynthia Davis, Tami Fraser or Cissy McAndrew present a variety of

music by women. Rock, jazz, soul, folk, country, all by women.

TUESDAYS 3:00 PM **Drive Time**

Join Steve for mostly "urban folk," but don't be surprised to hear some Blues, Zydeco, or World Beat.

WEDNESDAYS 9 AM **Le Cafe Folk**

Contemporary folk music with a touch of tradition and world hosted by Donna.

Metal/Hardcore

SUNDAYS 3 AM

Sonic Slaughterhouse

Industrial hard-core, grind core, death metal with JR Torina.

FRIDAYS 1 AM **Dyer's Eve**

Host Dave Dyer offers a variety of thrash and speed metal.

SATURDAY 1 AM **To Hell and Back**

Les Nilsson offers a splattering of thrash, speed, industrial grindcore, and death metal. Your parents will hate it.

Modern/AlternativeMONDAYS 3 AM **Absolute Elsewhere**

Avante-pop. Dark ambience, and things of uncommon nonsense. Hosted by Brian.

TUESDAYS 1 AM **Total Harmonic Distortion**

From Neubauten to Clock DVA, this

Kismet Boutique

• Drums
• Costumes
• Jewelry
• Incense
• Belly Dance Music

Register for Belly Dance Classes

1307 South 900 East
Monday-Friday • 12-6 p.m.
Saturday 12-5 p.m.
(801) 486-7780

is hard, angst-ridden, disturbing industrial. Hosted by cyper punk Alan.

TUESDAYS 3 AM **In the Extremis**

Post-industrial sound scrapes from the edge of the abyss. With host Brian.

WEDNESDAYS 1:00 AM **Seremous Ropes**

Alternative rock—R.E.M., The Smiths, Prefab Sprout—with host Richard.

SATURDAYS 4 AM **Nocturnal Emissions**

A diverse mix of everything alternative. All the stimulation your late night activities could need. Slack music for slack people. Hosted by Dan and Mike.

New Age/ElectronicSUNDAYS 8 PM **Nexus**

Electronic and acoustic music with River Song.

SUNDAYS 11 PM **Variables**

Electronic, new age and contemporary jazz with your host Scott Howard.

MONDAYS 1 AM **Audio Synergy**

Host Bobi Fox plays a variety of sounds, including industrial, space and electronic.

Riders' Radio Theater

It's the Cowboy Way!

brought to you by
Bakers C&C
doing business
THE COWBOY WAY!

MONDAYS 9 AM Touch the Earth

Folk, organic, and acoustic music with Kevin Florendo.

Reggae**WEDNESDAYS 8 PM Roots Ragga****Reggae**

Selector Ken Quail comes in with all styles of reggae mixed in a way you're not likely to hear elsewhere.

WEDNESDAYS 10:30 PM Nite Roots

Reggae, reggae, reggae with Papa Pilgrim. Listen for "Reggae Runnings"—upcoming reggae events.

SATURDAYS 4 PM Smile Jamaica

The tradition continues: from Spongi Reggae to deep dish Dub. Host Robert Nelson serves up strict roots.

THE GREEN PARROT CAFE

FEATURING LIVE BLUES

Thursday - NO COVER for Ladies!

Full Lunch and Dinner Menu.

Most eclectic CD Jukebox in Salt Lake City.

155 West 200 South Salt Lake City

A private club for members and guests.

Rock**MONDAYS 3:00 PM Drive Time**

An eclectic synthesis of voices from blues, folk, R&B, and rock. Hosted by Lonna.

THURSDAYS 3:00 PM Drive Time

An aesthetically precise selection of rock, folk and related music. We do try to be lively. Hosted by Bill Boyd.

THURSDAYS 8 PM Aural Decay

A diverse mix from rock to reggae. You want covers? We got 'em. If they don't fit, we'll take 'em in a little. Hosted by Dave S.

FRIDAYS 10:30 PM Poetic Injustice

Rock, Blues, Old and New Wave. Spine-tingling, mind-tingling tunes covering the past thirty years, with host Ken Sullivan.

ETHNIC CLOTHING & JEWELRY ACCESSORIES & GIFTS WEARABLE ART GATHERED FROM AROUND THE WORLD

chameleon artwear

875 EAST 9TH SOUTH SLC, UT • 363-6463
596 MAIN STREET PARK CITY • 645-9819

EXPERIENCED BOOKS recycled reading



2150 S. Highland Dr.
Salt Lake City, UT 84105
467-0258

**SATURDAYS 10 AM Saturday****Sagebrush Serenade**

A musical history lesson without the lecture.

SATURDAYS 1 PM Wake Up Call**Soul/Rap/Urban****TUESDAYS 3:30 AM Midnight Light**

With Ebay. Old and new soul and R&B.

THURSDAYS 3:30 AM Music for Your Ears

With host Tony Hodges.

FRIDAYS 9 AM Rhythm Traxx

A collection of soul and jazz with occasional rap. A twist of oldies and dusties will lighten the mood. Hosted by Jonathan Cloud.

FRIDAYS 1 PM Elements of Soul

Soul, rap, funk, '70's to '90's with host Earl B.

FRIDAYS 3:00 PM Drive Time

Chuck Bradley or Lance Drummond bring you rhythm and blues, old rock 'n' roll.

FRIDAYS 7 PM S.O.A.P.

Sounds of a party. Sam Smith keeps you up to date with the rest of the world.

FRIDAYS 8:30 PM Rapp Attack

Hard-core rap with host DJ Buzz.



LP'S • CD'S
CASSETTES
MAGAZINES MUSIC
VIDEOS
ACCESSORIES
POSTERS

Smokey's Records

1515 South 15th East
Salt Lake City
801-486-8709

Women's Programming**TUESDAYS 9 AM Women or Nothing**

Cynthia Davis or Tami Fraser present a variety of music by women. Rock, jazz, soul, folk, country, all by women.

THURSDAYS 9 AM Women: The**Second Decade**

Babs DeLay shares the accomplishments of women from the 1920's to the 1990's. Women's News, Rape Crisis Report, and specials on women in history.



The Preferred Pie
Delivered FREE

Sugarhouse

1624 South 1100 East

486-3748

**Downtown**

301 South West Temple

322-FREE

Choose from over 25
delicious toppings!

Deluxe Salads
Famous Garlic Rolls
Cold Sodas

Mention KRCL and receive 1 dozen famous Garlic Rolls with any Large Pizza Order. (not valid with other discounts)



A PRIVATE CLUB FOR ITS MEMBERS
Open Daily At Noon
702 West 200 South • 531-0833
Salt Lake City, Utah 84104

KRCL & KZMU SCHEDULE IN MOAB ON 89.7 FM

Sunday

7-10am Living the Circle of Life	5-7pm Riders Radio/Fret N'Fiddle
10am-2pm Sunday Sagebrush Serenade	7-9pm Kokopelli Coffeehouse
2-5pm Sunday Serenade	9pm-12am Nexus/Variables

Monday

7-9am Breakfast Jam	3-6pm Groovin Tunage
9-10am Touch the Earth	6-6:30pm Pacifica News
10-noon Tilted Park	6:30-9pm Jamies Show
12-1pm Reading/Public Affairs	9-11pm The Red Rock'n Blues Show
1-3pm Global Gumbo	11pm-12am Blue Highways

Tuesday

7-9am Breakfast Jam	5-6pm Atomic Radio
9-10am Women or Nothing	6-7pm Pacifica News/Public Affairs
10-noon The Acoustic Cafe	7-9pm Seamless Web
12-1pm Reading/Public Affairs	9-11pm Nightnoise
1-3pm Global Gumbo	11pm-12am Radio Bemba
3-5pm Pathways	

Wednesday

7-9am Breakfast Jam	4-6pm Moab Melange
9-12noon Le Cafe Folk	6-7pm Pacifica News/Public Affairs
12-12:30pm Reading	7-9pm Patchwork
12:30-1:30pm New Dimensions	9-11pm Reggae on the Rocks
1:30-4pm Mostly Girls	11pm-12am Nite Roots

Thursday

7-9am Breakfast Jam	3-6pm Drive Time
9-10am Women the Second Decade	6-7pm Pacifica News/Public Affairs
10am-noon Moms New Music Show	7-9pm Jazz Not Jazz
12-1:00pm Reading/Public Affairs	9-11pm Round Midnight
1-3pm Wake of the Flood	11pm-12am Perpetual Change

Friday

7-9am Breakfast Jam	4-6pm The E Collection
9-10am Rhythm Traxx	6-7pm Pacifica News/Public Affairs
10-noon Music with Christy	7-9pm Ethereal Age
12-12:30pm Reading	9-11pm The Pirate
12:30-1:30pm Trading Post	11pm-12am Poetic Injustice
1:30-4pm The Gypsy Life	

Saturday

7-8am Sangeet Malar	1-4pm Wake Up Call
8-9am Breakfast Jam	4-7pm Smile Jamaica
9-10am Children Shine Time	7-9:30pm The Pirate
10-12pm Bloody Merry Morning	9:30-12am The Greg Show
12-1:00pm Saturday Sagebrush Serenade	

Note: Schedule subject to change. Bold type reflects KRCL programming

By Jerry Schmidt

TP Gallery and Turquoise Connection offer authentic Native American handcrafted jewelry and art. After twenty years in the same location, many of the area's finest artists and craftspeople look to TP Gallery as an outlet for their

original creations. The Salt Lake area hosts a large Native American population, including some of the finest sand-painters, silversmiths, potters and weavers in the nation. TP Gallery considers it a privilege to offer a profitable outlet for

their work while bringing clients unique and beautiful items.

TP Gallery is located at 252 S. Main while Turquoise Connection is located on the Richard Street Level of Crossroads Mall, both in Salt Lake City. ▣



OTHER COLORS:

Stories of Women Immigrants

Nearly a million new immigrants arrive in this country each year, and at least half of them are women - yet only rarely do we have the opportunity to hear their perspectives on why they have come, and to learn their hopes, values and visions for our country...

For this series, producer Tatiana Schreiber talked to forty recent immigrants and brings us their voices in collage, story, and music...

Airs Mondays at 6:30 pm

KRCL HAS BEEN

CONNECTED!

tapped in.

To the information superhighway. KRCL has

access to

the Internet. Thanks to

X-mission for donating Internet services to

KRCL radio.

Drop us an E-mail.

Our address is

KRCL@XMISSION.COM



Quiet Mountain Travel Specialists.
702 East 100 South
359-9361



Join Mr. Baggins . . .



Uninterrupted hours of the Dead!

December 31, 1994
9-lam

Ring in the New Year with KRCL

Wednesdays 5:30 am

December 7, 14, 21, 28 and January 4

On KRCL

*Voices
from the Trail*

Five half-hour programs that each explore a different aspect of western life.

KRCL PROGRAM GUIDE is published bi-monthly by Listeners Community Radio of Utah, Inc. a non-profit corporation. Unsolicited submissions are welcome but cannot be returned. The editor reserves the right to edit any manuscripts to conform to standards in accordance with KRCL policy. All letters, manuscripts, photos or artwork should be sent attention: Managing Editor, Kris Liszkowski, KRCL Program Guide, 208 W. 800 South, Salt Lake City, UT, 84101. Opinions expressed are not necessarily those of KRCL's volunteers, staff or Board of Trustees.

Our Address: KRCL, 208 West 800 South, Salt Lake City, Utah 84101. Our office phone is (801) 363-1818.

KRCL is a 16,500 watt listener-sponsored community radio station broadcasting to over 1.4 million people. **KRCL** can be found on the dial at 90.9 FM, on 96.5 in Park City, and on **KZMU** at 89.7 FM in Moab, Utah. ▣

On Behalf of the Staff, Volunteers and Board of KRCL, I would like to thank the businesses, restaurants, and KRCL members who donated during Fall Radiothon 1994.



Specifically, thanks to:

**Dan's Foods Space Agency
The Green Parrot Cream O'Weber
Wasatch Touring Liberty Heights Fresh**

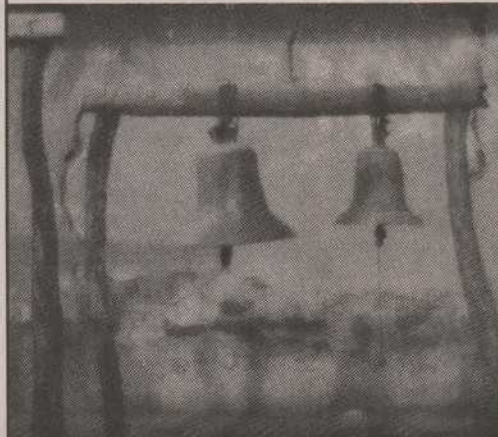
for donating in the form of a *Challenge Grant*.

Thanks for your very generous donations and pledge of support to KRCL radio.

Kris Lizkowski,
Development Director



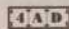
Toward The Within
DEAD CAN DANCE



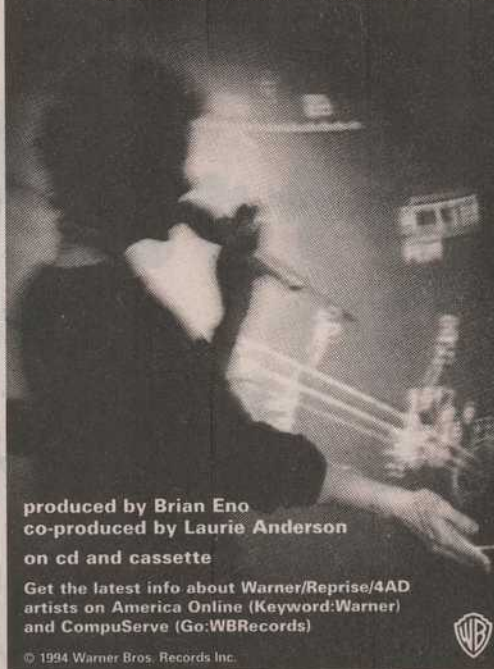
FILM, SOUNDTRACK,
NINE NEW SONGS

on cd and cassette

on 4•A•D home video and laser discs

©1994 4AD 

LAURIE ANDERSON
BRIGHT RED TIGHTROPE



produced by Brian Eno
co-produced by Laurie Anderson
on cd and cassette

Get the latest info about Warner/Reprise/4AD
artists on America Online (Keyword:Warner)
and CompuServe (Go:WBRecords)

© 1994 Warner Bros. Records Inc. 

[listener-supported music YOU program.]

THANK YOU!

Support These Underwriters

Please visit and thank our new underwriters who have joined the KRCL family:

Automated Service Company
521-8935

Huddart Floral
531-7900

Oasis Stage Works
363-0364

Performance Audio
466-3196

Print Works
Publisher of Wasatch Times
649-8046

**The Sun: A Private Club
For It's Members**
702 West 200 South

**Corporation for Public
Broadcasting**
Washington, D.C.

Cosmic Aeroplane
1300 South 900 East

Cream O'Weber
Look in your local grocery store

Dan's Foods
Salt Lake City

Downtown Storage
29 West 800 South

Dura Shed
261-5205

The Event Magazine
Distributed Along the Wasatch

Gardiner Distributing
554 West 100 South

Graywhale CD
Salt Lake City, Ogden, Provo, Logan

Green Parrot Cafe
155 West 200 South

Health and Wellness Massage
322-0192

Hispanic Yellow Pages
943-5295

Intermountain Guitar and Banjo
712 East 100 South

Intermountain Litho Printing
4030 South 500 West

Liberty Heights Fresh
1300 South 1100 East

Mt. Olympus Waters, Inc.
1825 South 3730 West

Mundo Hispano Newspaper
Distributed Along the Wasatch

Nizhoni Trading Company
Located in the NE corner of
Fashion Place Mall

Overnight Graphics
533-0435

The Park Cafe
604 East 1300 South

Pedal Express Courier
445 East 200 South

Pratt Sound
973-4222

Private Eye Weekly
Distributed along the Wasatch

Ruby's Catering
564 South 3rd Avenue

Salt Lake Pizza & Pasta
1063 East 2100 South

Salt Lake Roasting Co.
320 East 400 South

Smokey's Record
1515 South 1500 East

**Space Agency Concerts and
Theatricals**
355-2200

The Spirit of Africa
1263 West 500 North

Sunrise Press
252 West 1300 South

T P Gallery
252 South Main

United Concerts
536-1234

U.S. Voice Mail
450 South 900 East. Ste. 110

**Utah Museum of Natural
History**
University of Utah

Video One
484 South 900 West

Wasatch Design
4679 S. Holladay Boulevard

Wasatch Touring
702 East 1300 South

Wild Rose
702 Third Avenue

Zephyr Club
301 S. West Temple 

KRCL gratefully acknowledges the support of these underwriters for providing funds and helping to ensure the future of quality programming at KRCL. If your company is interested in becoming a partner with KRCL, call 363-1818 for more information.

KRCL 91FM

208 West 800 South
Salt Lake City, Utah 84101

NON-PROFIT
ORGANIZATION
U.S. POSTAGE
PAID
SALT LAKE CITY, UTAH
PERMIT NO. 3973

Please notify us of any change of name or address. The post office will not forward the Program Guide

EXPLORING COMMUNITY FOR 15 YEARS . . .
KRCL PARTY!

Saturday, December 3, at 7pm

Salt Lake Art Center

20 South West Temple



Desert Aire salutes 15 years of KRCL with a
live performance, 8pm.

Meet your favorite KRCL anarchist, new age junkie,
hip-hop environmentalist, women's revolutionary, or
Sagebrush programmer.

Check out some of the historical
KRCL artwork and mementos.

Hors d'oeuvres by The Park Cafe.
Liquids provided. Bring cash for the fermented stuff.

*Special thanks to the Salt Lake Art Center, Performance Audio,
The Park Cafe, Huddart Floral, Kerman Design, Intermountain
Litho Printing and Oasis Stage Werks.*