

**KRCL**  
PROGRAM GUIDE



**91FM**  
JULY/AUGUST 1995

TWILIGHT CONCERT SERIES

**VOICES**



**Volunteers:** Rob Baker, Dan Benaducci, Marie Blackwood, Tom Blackwood, Randy Block, Bill Boyd, Chuck Bradley, Deena Brazy, Keith Browning, Deb Burrington, Danny Buryal, Greg Campbell, Mark Cantor, Rebecca Chavez-Houck, Alan Chow, Mike Christy, Jonathan Cloud, Stacey Cole, Steve Connor, Brian Crockett, Cynthia Davis, Babs DeLay, Pat Dell, Anjali Deshpande, Lance Drummond, Kim Duffin, David Dyer, Jim Elder, Helene Elbien, Bruce Engelhard, Mike Evans, Lucy Fairchild, Yan Fang-Magnusson, Victor Fernandez, Nancy Fillat, Ellen Fisher, Doc Floor, Ann Floor, Kevin Florendo, Bobi Fox, Tami Fraser, Jeff Freedman, Jimmy Hamamoto, Ebay Hamilton, Mark Hampton, Bernice Halladay, Kristina Handy, Brian Hansen, Doug Harding, Tanya Hawkins, Dung Hoang, Tony Hodges, Marc Hoenig, Eric Holdaway, Scott Howard, Kerry Jensen, Carlie Jimenez, Laurie Johnson, Tom Johnson, Shia Kapos, Glenn Keister, Brian Kelm, Uma Khandkar, Susan Kies, Jeff Kimball, Bill Komlos, Phil Lanouette, Deborah Levine, Dylan Mace, Lisa Mace, Jorge Malca, Mike Marchetti, Greg Marcial, Lee Martinez, Cissy McAndrew, Lynn McCue-Hamilton, Dean Mednick, Chiedu Megwalu, Craig Miller, Susanne Millsaps, Maureen Mooney, Richard Moore, Joseph Moratalla, Becky Moss, Tekehu Mumantui, Marian Nash, Robert Nelson, Les Nilsson, Charlene Orchard, Max Packineau, Ken Pavia, Giovanna Percantio, Ann Pineda, Tony Polychronis, Betsy Quintana, Bill Ramsey, Linda Reeder, John Reese, Mary Lou Reitz, John Rokich, Gerry Rumyan, Helen Salas, Jeff Salt, Dave Santivasi, Marilyn Scharine, Richard Scharine, Jerry Schmidt, Steve Seftel, Ellen Selt, Wayne Selu, Myron "Buzz" Simon, Robin Simper, Sam Smith, Victoria Smith, Rick Stayner, Jodi Stewart-Browning, Tim Stewart, Ken Sullivan, Jim Sutteer, Danny Tapeta, Marlena Lambert Tempest, Bruce Thomas, Gary Timm, J.R. Torina, David Turner, Joel Uluakiola, Nancy Valdez, Matthew Wallace, Susan Weisenberg, Jo Wilson, Leslie Wold, Truman Wold, Diane Winter, Doug Young, Kimberly Zumbo.

## KRCL Staff

David Young, *General Manager*  
 Donna Land Maldonado, *Program Dir.*  
 Lewis Downey, *Chief Engineer*  
 Paula Rokich, *Business Manager*  
 Tristin Tabish, *Membership Coordinator*  
 Bill Boyd, *Music Coordinator*  
 James Jun, *Intern*

## KRCL Board of Trustees

Fran Pruyn, *Chair*  
 Russ Hagood, *Vice Chair*  
 Tom Blackwood, *Treasurer/Vol. Rep.*  
 David Young, *President*  
 Robert Flores, *Board Member*  
 Chris Gittens, *Board Member*  
 Stephen Holbrook, *Board Member*  
 Chris Cook Keating, *Board Member*  
 Jo-Ann Wong Kilpatrick, *Board Member*  
 Howard Lundgren, *Board Member*  
 Robyn Nelson, *Board Member*  
 Debbie Rocha, *Board Member*  
 Tamara Taylor, *Board Member*  
 Paul Wharton, *Board Member*  
 Becky Moss, *Volunteer Representative*  
 Tami Fraser, *Volunteer Representative*

## Community Advisory Board

Kathy Brooks, *CAB Member*  
 Paul Frisby, *CAB Member*  
 Jim Gonzales, *CAB Member*  
 Debbie Rocha, *CAB Member*  
 Tona Treetop, *CAB Member*

**Voices** is designed and produced by  
 Kerman Design.

Tune in the "Mighty 91"  
 for... THE  
**Blue Devils**  
**Blues Revue**  
 - THE FEATURE EDITION -  
 BROADCAST LIVE THE LAST  
 MONDAY OF EACH MONTH  
 9-11 p.m. on KRCL

from the  
**DEAD SORE**  
**SESSION**



## LETTERS

## Our Listeners Talk Back

KRCL welcomes comments and opinions from its listeners and will print all signed letters. KRCL reserves the right to edit offensive or inappropriate language.

## To Whom it May Concern:

Enclosed is my membership renewal for this year, at a reduced pledge. Originally, I had planned not to renew this year. My reason for this was as protest to extremely biased and misleading information presented on KRCL regarding natural resource issues in Utah.

I am particularly offended by presentation of opinions and quasi-news reports from SUWA, UWA, and the Sierra Club without attempt to provide differing views. KRCL often describes itself as the station which provides views and programming which cannot be heard elsewhere. However, natural resource programming is nothing more than a continuation of the ill informed diatribe against traditional land users we hear from major broadcast networks and print journalism.

Furthermore, your unquestioning support of groups such as SUWA leads to negative impacts for natural resources in Utah. I say this because their methods of appealing decisions and initiating law suites without sitting down and working with land managers and other resource users with common interests results in limited budgets being wasted for administration and litigation instead of direct resource benefit.

Let me give you an example. SUWA's Winter/Spring 1994 issue of "Giving the Land a Voice" has an article entitled "Why SUWA Mostly Stays off Advisory Committees and Their

ilk." In item 1 of this article, SUWA objects to sitting down with those who have an interest in the status quo, even those other interests have agreed to sit on a committee and compromise their interests with SUWA and other groups.

Item 2 states that SUWA is being asked to lay down their legal weapons to talk in good faith. However, participation in advisory committees and the like in no way reduces SUWA's or any other group's rights to peruse appeals or legal processes when they feel laws or regulations are not followed. On the contrary, not only do they maintain these rights, but they are involved in the decision making process to see that rules are followed and see that their voice is heard from the very beginning.

Both items 1 and 2 refer to continued environmental destruction while the committees work. This is a dishonest statement. When a steering committee of advisory committee is convened, it is to reach a decision. No action is taken until that decision is reached.

Item 3 says SUWA should not have to tell an agency how to do its job. However, agencies are required by law to seek input from the public before making a decision or taking an action. When they don't, SUWA sues. How hypocritical.

Finally, item 6 states that SUWA supports the concept of American democracy with separating of powers between the three branches of government. They fail to mention that we are government of the people and by the people, based on the concept of people sitting down and working out their differences to the

common good of all the people, not just a few elitists.

I could go on, but I think you get my point. Unquestioning support of groups such as SUWA is done so at the expense of balanced use and management of our precision, natural resources. I am renewing my membership with the hope that you will strive to provide a voice for view points not often heard elsewhere. I don't object hearing from SUWA and others on KRCL as long as you provide opposing viewpoints along side theirs.

As a side note, I appreciate the dedication of your volunteers such as the phone solicitor who called me. He encouraged me to write this letter to voice my concerns and continue support of community radio. I really do enjoy a lot of your programming.

Sincerely,  
 William A. Conrad

## Dear KRCL,

I attended your Day in the Park celebration as a non-profit representative. It was clearly the best event I have attended in the year I have lived in Salt Lake City. Being from Chicago, I have been involved with many well-run festivals and large-scale special events. I feel that your event was every bit as enjoyable and well-managed. Congratulations on the success of the Day in the Park. I look forward to attending it next year.

Sincerely,  
 Jayne McGuire  
 Service Enrichment Coordinator  
 Developmental Disabilities, Inc.

## Dear KRCL,

On behalf of the board and staff of the Salt Lake City Arts Council and the hundreds of participants,

*continued on page 10*

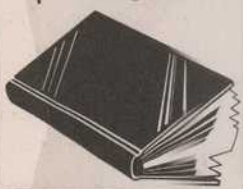


**REUSE  
 RENEW  
 RECYCLE ...**



'Tis the season to dig up your dusty books, vinyl, and CDs for KRCL's annual BOOK-RECORD sale. Donations can be dropped off at KRCL (208 West 800 South) 24 hours a day.

Please, no textbooks - we didn't like them then, we don't like them now! Stay tuned to KRCL for more details about the upcoming sale.



By Susan Kies

About a year ago, I finished a series of articles detailing KRCL's programming for each day of the week, ending with Friday. Since then, every day has had changes in programming and sometimes different volunteer hosts. Therefore, because the last series of articles began with Saturday, I will do the same.



If you are awake at 1am early Saturday morning because of your job, insomnia or simply because you like your music loud and fast, you'll enjoy "To Hell and Back." Your host, Leslie Nilsson, presents

a frenetic blend of speed, thrash and death metal music. This show has a loyal listening audience who never knows what Les will play next. Les will continue to explore the unusual—so prepare to experience different types of rhythms while listening "To Hell and Back."

Dylan Mace comes in from 4 to 7am to scare the sedate folk of the valley with "Short Term Effects." Gothic rock and other "dark" offerings are a major part of this show, but you will hear the obscure and unusual cuts as well. To get the total "Short Term Effects," the best advice is to listen.



From 7 to 8am as the sun comes up, listeners can sample a taste of the music of India. Uma Khandkar and Anjali Deshpande chose to name

their show "Sangeet Malar," meaning 'music in bloom.' Uma and Anjali do the show on alternate Saturdays. Originally Anjali would play traditional music and Uma would play the more contemporary. Now both women play a mix of old and new. These co-hosts only have one hour a week so they use every minute to entertain and give information on local events of interest to the approximately four hundred Indian families along the Wasatch Front. Uma also invites people from the community to bring their own music, thus encouraging creative ethnic programming.

The Saturday edition of "Breakfast Jam" starts at 8am. This is a rather new facet of KRCL programming. Host Jo Wilson has been involved with community radio for several years. She is a veteran of the "Thursday morning Breakfast Jam," a member of the Day In The Park Committee and the Women's Radio Collective. She was also a driving force behind obtaining the new live stereo remote unit for KRCL. The Saturday Jam is shorter than the weekday slot and offers more rock and roll mixed in with the mellow sounds of folk. Jo's honey-velvet voice is a pleasant way to get the weekend off to a good start.

Most of KRCL's programmers bring their own CDs, records and tapes from home, so a little before 10 am, Jo has to get her stuff out of the on-air control room to allow John Florence time to get "Saturday Sagebrush Serenade" on the air. "Saturday Sage" has had

continued on page 14

## RADIATE THE AIRWAVES

YOU TOO CAN BE A RADIO STAR!

PUT YOURSELF IN THE DRIVER'S SEAT AND WHET THE LISTENERS' EARS WITH YOUR FAVORITE TUNES ON LISTENER'S CHOICE, EVERY SATURDAY NIGHT FROM 7:00-9:00 P.M. SUBMIT A SONGLIST TO: LISTENER'S CHOICE, 208 WEST 800 SOUTH, SLC, UT 84101.

By Casey Jarman

The Twilight Concert Series, a program of the Salt Lake City Arts Council, presents the eighth season of concerts on Thursday evenings during July and August. Having moved to the Gallivan Utah Center (from the Salt Lake Art Center) for the 1994 season due to construction, the series will be presented at the Gallivan Utah Center. KRCL 91FM will once again be the Twilight Concert Series radio partner and will present live broadcasts of each night's Twilight Concerts. The season opens on July 13 and continues through August 24. Twilight concerts are scheduled every Thursday evening at 8pm and are FREE to the public.

### The 1995 Twilight Concert Series Summer Schedule

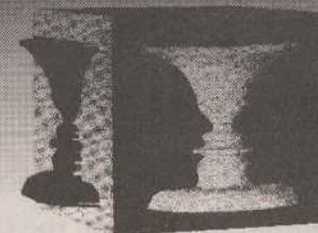
- 7/13 **Tarika**  
*Music and dance of Madagascar*
- 7/20 **Joe Louis Walker and the Boss Talkers**  
*Crisp, bone-chilling blues guitarist and vocalist*
- 7/27 **Brave Combo**  
*Out-of-control high energy polka stomp music*
- 8/3 **Steve Riley and the Mamou Playboys**  
*Cajun and zydeco music from Mamou Louisiana*
- 8/10 **Wallace Roney Quintet**  
*Brilliant trumpeter, a "young lion" of jazz*
- 8/17 **Tabu Ley Rochereau**  
*Soukous music and dance from Zaire by an African music legend and superstar*
- 8/24 **Junior Brown**  
*"Guit with it" country-swing from Austin, TX*

Recognized for quality and diversity in programming, the Twilight Concerts will continue that tradition throughout the 1995 season, presenting a mix of the best in world music, jazz folk-ethnic and folk-acoustic. Twilight Concert audiences can enjoy the balmy summer in Salt Lake evenings at the Gallivan Utah Center, bringing refreshments or purchasing beverages and light food on the plaza. New for 1995 will be The Downtown Alliance's Farmer's Market, a Thursday evening version of the Saturday market at Pioneer Park.

The season opens on July 13 with TARIKA, a spirited music and dance ensemble from the island nation of Madagascar. For more information about the Twilight Concert Series, contact the Salt Lake City Arts Council at 596-5000, or KRCL 91FM at 363-1818. ☑

## THINKING ALLOWED

with Dr. Jeffery Mishlove  
THURSDAYS 6:30PM



The **patagonia**  
Outlet  
3267 Highland Drive

ETHNIC CLOTHING & JEWELRY  
ACCESSORIES & GIFTS  
WEARABLE ART  
GATHERED FROM  
AROUND THE WORLD

**chameleon artwear**

875 EAST 9TH SOUTH  
SLC, UT • 363-6463  
596 MAIN STREET  
PARK CITY • 645-9819

**WASATCH DESIGN Co.**  
makers of custom ski wear  
• original casual wear •  
• alteration & repair •  
4679 S. Holladay Blvd, SLC  
277-4547

guitars  
mandolins  
fiddles  
books, kits

**Intermountain Guitar & Banjo**

sunjos  
hand-made  
instruments  
accessories

Master  
Craftsmen

712 EAST FIRST SOUTH, SALT LAKE CITY, UT 84102  
(801) 322-4682  
10 AM - 6 PM, MONDAY thru SATURDAY

Rentals  
Lessons

**WASATCH TOURING**

Quiet Mountain Travel Specialists.  
702 East 100 South  
359-9361

**THE Sun**

A PRIVATE CLUB FOR ITS MEMBERS  
Open Daily At Noon  
702 West 200 South • 531-0833  
Salt Lake City, Utah 84104

By Susan Kies

The new coordinators of "Reading" are Lucy Fairchild and Kerry Jensen. They took over this position from Bruce Thomas on June 5th. Lucy and Kerry have been volunteers at KRCL since the early days of the station. They are excited to explore the meaning of literature through the spoken word. They also hope to continue the feeling of "community" which has developed throughout the years within the program. Lucy believes that "everything under the sun" can be included within the "Reading" for-



mat. She and Kerry will continue to look for readers and writers with unusual tastes in the arts. Bruce Thomas leaves the post as coordinator of "Reading" after almost six years. He wants to thank all of the people who have been generous enough to give of their time and their talents. Bruce is especially grateful to the many authors who have come down to KRCL to read from their works (sometimes still in manuscript form). We at KRCL sincerely appreciate all Bruce has done to maintain the quality of this fine half hour of programming. If you are interested in becoming part of the "Reading" family, leave a message for Lucy or Kerry at 363-1818, or tune in every week day from noon until 12:30 to listen to the marvelous offerings presented. ✓

mat. She and Kerry will continue to look for readers and writers with unusual tastes in the arts. Bruce Thomas leaves the post as coordinator of "Reading" after almost six years. He wants to thank all of the people who have been generous enough to give of their time and their talents. Bruce is especially grateful to the many authors who have come down to KRCL to read from their works (sometimes still in manuscript form). We at KRCL sincerely appreciate all Bruce has done to maintain the quality of this fine half hour of programming. If you are interested in becoming part of the "Reading" family, leave a message for Lucy or Kerry at 363-1818, or tune in every week day from noon until 12:30 to listen to the marvelous offerings presented. ✓

mat. She and Kerry will continue to look for readers and writers with unusual tastes in the arts. Bruce Thomas leaves the post as coordinator of "Reading" after almost six years. He wants to thank all of the people who have been generous enough to give of their time and their talents. Bruce is especially grateful to the many authors who have come down to KRCL to read from their works (sometimes still in manuscript form). We at KRCL sincerely appreciate all Bruce has done to maintain the quality of this fine half hour of programming. If you are interested in becoming part of the "Reading" family, leave a message for Lucy or Kerry at 363-1818, or tune in every week day from noon until 12:30 to listen to the marvelous offerings presented. ✓

mat. She and Kerry will continue to look for readers and writers with unusual tastes in the arts. Bruce Thomas leaves the post as coordinator of "Reading" after almost six years. He wants to thank all of the people who have been generous enough to give of their time and their talents. Bruce is especially grateful to the many authors who have come down to KRCL to read from their works (sometimes still in manuscript form). We at KRCL sincerely appreciate all Bruce has done to maintain the quality of this fine half hour of programming. If you are interested in becoming part of the "Reading" family, leave a message for Lucy or Kerry at 363-1818, or tune in every week day from noon until 12:30 to listen to the marvelous offerings presented. ✓

## Thanks 2NIGHT (In Stereo)

KRCL would like to extend a huge thanks to the Dead Goat Saloon, Uinta Brewing Company, Ed Pratt Sound, the Tempo Timers, House of Cards, Megan Peters, Robbie Kapp, John Paul Brophy, John Reese, Bill Ramsay, Jo Wilson, Brian Kelm, the Day in the Park Committee, and *everyone* who attended the KRCL fundraiser benefiting the Live Remote Broadcast Fund. The money raised will go toward the purchase of a stereo transmitter so live remote broadcasts can be in stereo—a dream come true! Don't forget to tune into KRCL the last Monday of every month for live blues from the Dead Goat Saloon—  
now in stereo!



*Kismet*  
Boutique

- Drums
- Costumes
- Jewelry
- Incense
- Belly Dance Music

Register for Belly Dance Classes

1307 South 900 East  
Monday-Friday • 12-6 p.m.  
Saturday 12-5 p.m.  
(801) 486-7780

USDC Inspected  
**FRESH** Seafood at

*Dan's*

Now open  
seven days a week!

bike board blade

**555**

OUR NEW LIBERTY PARK LOCATION!  
703 EAST 1700 SOUTH  
801 / 561-2626 FAX 561-2666

by Tristin Tabish

Your voice is trembling and cracking, vision blurred, heart pulsating out of control, stomach churning, and your palms are so clammy that anything which grazes them sticks like glue. Skydiving scenario? No. First date? Nope. It's *your* radio debut on KRCL's "Listener's Choice."

From reggae to jazz, classical to metal, rock to pop, rap to punk rock, worldbeat to bluegrass, and folk to soul, Listener's Choice may very well be the most unpredictable music program on KRCL.

Every Saturday night from 7-9pm, KRCL extends its airwaves to a lucky listener. No experience? No problem. KRCL provides a fully-trained engineer to push, pull and turn the many baffling buttons, knobs and levers of the on-air operating board. You may also delve into KRCL's vast CD library to spice

up your edition of Listener's Choice a bit.

To let your voice be heard on KRCL (quivering or not!), submit a songlist with approximately 15-25 of your favorite tunes to: KRCL 91FM, Listener's Choice, 208 West 800 South, Salt Lake City, UT 84101.

Listener's Choice is made possible by financial support from listeners, and the numerous KRCL programmers who volunteer time for the program. KRCL would like to extend an enormous, special thanks to Jodi Stewart-Browning and Keith Browning who collectively spent hundreds of hours and an abundance of energy spearheading Listener's Choice in the past. A big welcome and thanks goes to Marie Blackwood who is the new Listener's Choice Coordinator. ✓



**BRACKMAN BROS.**  
BAGEL BAKERY  
Bagels. Pure & Simple.



**Pizza & Pasta**  
1063 East 2100 South • Salt Lake City, Utah 84109  
(801) 484-1804

**COSMIC  
AEROPLANE  
COSMIC  
AEROPLANE  
COSMIC  
AEROPLANE**

1300 SOUTH 900 EAST

**487-9505**

HOURS: M-F 11-7; SA 10-6; SU 12-5

## THE BIGGER PICTURE

AIRS ON THE  
**Morning Light**

Wednesdays 5:30am  
July 5-26



*Media's Effect on Perception and Policy*

ROUND TABLE CALL-IN DISCUSSION

Saturday, August 5 from 7 to 8pm

Hosted by Ann Floor and Mark Hampton

KRCL's Women's Radio Collective and the Association of Women's Music and Culture (AWMAC) invite and encourage you to experience Ani DiFranco



in concert at the Fine Arts Auditorium on the University of Utah campus in Salt Lake City, on Thursday, August 17 at 8pm.

"If folk music has a future, it's Ani DiFranco." Sometimes soft, sometimes furious, her acoustic guitar style, vocal delivery, intense stage presence and unique songs are a compelling mix. Recognized as the sensation of the North American festival circuit and "one of the boldest alternative artists of the 90's," Ani will be performing favorite songs from her previous six recordings, as well as songs from her new release, "Out of Range."

Tickets are \$12 in advance; \$14 at the door; and available at: Raspberry Records (Foothill Drive in Salt Lake City), A Women's Place Bookstore (Foothill Drive in Salt Lake City), and Smokey's Records. The Fine Arts Auditorium is wheelchair accessible.



### If buying or selling a home isn't fun, you're working with the wrong agent.

Besides being a two time college graduate, a real estate agent with 10 years full time experience and a certified real estate instructor...Babs is just plain silly. For one thing, she laughs at her own jokes. Get an expert and a great experience !

**No matter your price range,  
You deserve the best !**



**Babs De Lay**  
Associate Broker  
467-2100

**Lewis Wolcott  
& Dornbush**  
REAL ESTATE

## THE POLSKI SKRIPTS

*Radio letters from Poland*

on Le Cafe Folk every Wednesday at 11am

**July 13- August 24  
Thursdays** **Twilight Concert Series**  
Broadcast Live on KRCL  
Gallivan Utah Center  
Live Music  
596-5000  
8pm, *free*

**July 28-29** **Utah Jazz and Blues Festival**  
Snowbird Event Center  
Robert Cray Blues Band  
Tito Puente Salsa/Jazz Explosion  
See ad on back cover for more info  
355-ARTS  
*Cover charge*

**July 31** **Blue Devil's Blues Revue**  
Broadcast live on KRCL  
Deadgoat Saloon  
328-4628  
9:30pm  
*Cover Charge*

**August 13** **IAMA Folk & Bluegrass Festival**  
Deer Valley Snow Park Lodge  
See page 11 for more information  
468-7664  
*Cover charge*

**August 17** **Ani DiFranco**  
UofU Fine Arts Auditorium  
649-2533  
8pm  
*Cover charge*

**June 5- August 25  
Weekdays** **Brown Bag Concert Series**  
Various locations  
Live dance, music & entertainment  
596-5000  
12:15pm, *free*

**August 19** **Earth Wind & Fire**  
Abravanel Hall  
355-ARTS  
8:00pm  
*Cover Charge*

**August 28** **Blue Devil's Blues Revue**  
Broadcast live on KRCL  
Deadgoat Saloon  
328-4628  
9:30pm  
*Cover Charge*

**June 17- Sept. 26  
Thursdays** **Red Butte Garden  
Summer Concert Series**  
Red Butte Garden  
Live entertainment  
581-IRIS  
6:30pm  
*Cover Charge*

**FOOTHILL**  
ORIENTAL RUGS

1464 FOOTHILL DRIVE

(801) 582-3500

### LETTERS *continued from page*

we want to extend our heartfelt thanks for helping to make the tenth anniversary of Living Traditions Festival a complete success.

KRCL's commitment to Living Traditions is very much appreciated and we enjoy working with all of you. As always, it's a pleasure.

In addition to good weather throughout the weekend which contributed to excellent public attendance, we had a number of special moments during the festival, which reinforced our commitment to the program. Informal gatherings of the vari-

ous ethnic communities around their food booths on lawn, presented a genuine feeling for the music, games and get-togethers representative of the communities. Mayor Corradini proclaimed May 19 as "Living Traditions Day" at the Opening Ceremonies on Friday evening; and Lieutenant Governor Olene Walker read Governor Leavitt's proclamation naming "Living Traditions Weekend" at the closing performance by the Utah Travelers on Sunday evening.

The Living Traditions Festival is a genuine reflection of the people of Salt Lake Valley and we are delighted to have celebrated together its tenth anniversary.

We look forward to working with you again next year when Living Traditions will be recognized by Salt Lake County and the State of Utah as a Statehood Centennial special event.

This success would not be possible without the support and contributions of our sponsors, our volunteers and our participants. Thank you again for your very important help in celebrating the landmark tenth anniversary with us.

Sincerely,

Casey H. Jarman  
Nancy Boskoff  
*Festival Director*  
*Executive Director*



by Jo Wilson

KRCL has *the* best listeners. Since our underwriters are also listeners, it stands to reason that we have *the* best underwriters. One of these underwriters is the Park Cafe, located at 600 East 1300 South in Salt Lake City, just south of Liberty Park. John Rains has owned the Park Cafe for five years, and learned of KRCL from a long time employee.

Casually dressed, in shorts, a t-shirt and apron, cooking as he talks, John says that the people that listen to KRCL are the same people who patronize his restaurant—a natural mix of ingredients. His association with KRCL is one that he enjoys—the variety of people, diversity, and music. He believes that by supporting KRCL, he is giving something back to the community that supports him and his business. "It's a big circle," he says. "Each of us giving to the other, it all comes back."

John and the Park Cafe have been big supporters of KRCL during Radiothon, KRCL's bi-annual fund raiser. He has been called upon, more than once, at the last minute to provide food for hungry volunteers. The Park Cafe catered KRCL's 15th Anniversary party last December at the Salt Lake

Art Center. John says, "I was astounded by the ability of the people there to consume vast quantities of food and drinks."

John Rains worked for a restaurant supply company before buying the Park Cafe, which was one of his customers. Owning and running the restaurant has surpassed his expectations, he says. "I had more time off, but not as much control over my own life. I wasn't as happy trying to meet other people's expectations as I am meeting my own." Now he works seven days a week, and looks happy and satisfied as he sautes veggies and combines ingredients for one of the tasty dishes the Park Cafe is known for. The innovative menu offers breakfast favorites, soups, salads, sandwiches, pasta dishes, seafood and old favorites like pot roast. John believes in trying to provide something for every palate, in an atmosphere that is casual, comfortable and affordable. Like KRCL, the Park Cafe's menu contains variety and lots of imagination. ▣



## WEDNESDAY MORNINGS

## The Polski Scripts


When KRCL volunteers Marilyn and Richard Scharine applied for a Fulbright position, they thought they might be travelling to England. Little did they suspect that their paths would lead them to Gdansk, Poland, where the language sounds "like feet sliding through rustling leaves." It also provided Marilyn with many aural images on cassette tape.

Those cassette tapes are the basis of POLSKI-SKRIPTS. These radio letters are part of the fare to be enjoyed by those who drop in at the "Le Cafe Folk," hosted by Donna Land every Wednesday morning from 9am-12noon.

Language and identity, the case of the TV translator, a film festival, a walk in the woods, the secrets of a city map, funky public transport, spectators of Oswiecim, and a walk with Waesa and solidarity form the topics.

"Amber and gold, rain and sea ports, indomitable spirit, a history of invasion and resistance, and a culture that kept Poland alive when it was wiped from the map—these all describe a country that I gradually discovered how to love," says Marilyn. "And we even travelled down a muddy country road to see the farming village where Richard's grandfather was born. We thought he was German. Of course that is very typical of Polish history and politics, and I love history and politics. Did you know that the Poles had the first constitution—before ours? Did you know that they picked the bricks from the rubble to rebuild their cities after World War II, as volunteers after the regular work day?" Time for the edit button!

Join Marilyn for a weekly POLSKI-SKRIPT at the "Le Cafe Folk." We might just serve a little Borscht or Pierogi and Kawa, of course. Do Widzenia! ▣



# Founders Title Company

Presents The 7th Annual

## IAMA Folk & Bluegrass Festival

At Deer Valley • Snow Park Lodge

Sunday, August 13, 1995

Gates Open 9:30 A.M. • Showtime 10:00 A.M.

Rain or Shine!

### Alison Krauss & Union Station

### Loudon Wainwright III

### Grass Is Greener

### Martin Simpson

### Ryestraw

### City Folk

### Bluegrass Conspiracy

### Ken Shaw

### Nancy Hanson

Adult Advance \$16 • Gate \$18 / \$1 Discount for IAMA Members

Family Advance \$32 • Gate \$35 (no additional discount)

Children &amp; Seniors \$10 (no additional discount)

Coolers Allowed • No Animals Allowed

Children's Tent

For More Information Contact:

IAMA Concert &amp; Comment Hotline • dial HOT-SONG (468-7664)

Park City Chamber Bureau • 1-800-453-1360

Visa/MC accepted on mail order only!

## Sponsored By:

Founders Title Company

Park City Chamber Bureau

Intermountain Acoustic Music Association

Squatter's Brew Pub

KRCL 91 FM

The Event

Blockbuster Music

Bike, Board &amp; Blade

Private Eye Weekly

Kennecott Copper

Wild Rose Mountain Sports

Brackman Bros. Bagel Bakeries

Precision Litho

Olympia Park Hotel

Intermountain Acoustic  
Music Association

## Ticket Outlets:

All Dan's Food Stores

Deer Valley Central Reservations

Local Music

Intermountain Guitar &amp; Banjo

Acoustic Music

Smokey's

Compact Disccounter

Great Salt Lake Guitar (Provo)

NuSound Music (Roy)

A Book Store (Logan)

SUNDAY

MONDAY

TUESDAY

WEDNESDAY

THURSDAY

FRIDAY

SATURDAY

5:30 AM	<b>SONIC SLAUGHTERHOUSE</b>	<b>MORNING LIGHT</b>					<b>SHORT TERM EFFECTS</b> with Dylan	5:30
6:00		<b>BREAKFAST JAM</b> <i>Acoustic, folk and acoustic rock</i>						6:00
7:00	<b>MORNING LIGHT</b>						<b>SANGEET MALAR</b> with Uma Khandkar & Anjali Deshpande	7:00
8:00	<b>LIVING THE CIRCLE OF LIFE</b> with Max Paekineau	with Jodi Stewart-Browning and Keith Browning	with Matthew	with Gerry 'Uncle Suz' Runyan	with Susanne	with Gary Timm	<b>BREAKFAST JAM</b> with Jo Wilson	8:00
9:00								9:00
10:00		<b>PSALMS TO THE MOTHER</b> with Kevin Florendo	<b>WOMEN OR NOTHING</b> with Cynthia Davis, Tami Fraser or Cissy McAndrew	<b>LE CAFE FOLK</b> with Donna	<b>WOMEN: THE SECOND DECADE</b> with Babs DeLay	<b>RHYTHM TRAXX</b> with Jonathan Cloud		10:00
11:00	<b>SUNDAY SAGEBRUSH SERENADE</b> with alternating hosts Phil Lanouette and Rick Stavner	<b>READING</b>					<b>SATURDAY SAGEBRUSH SERENADE</b> with John	11:00
12:00		<b>OUR ARTS</b>	<b>PEOPLE'S BUSINESS</b>	<b>CONCERNING GAYS &amp; LESBIANS</b>	<b>LUNCH ENCOUNTER</b>	<b>LA VOZ DE LA GENTE</b>		12:00
1:00 PM		<b>GLOBAL GUMBO</b> with Steve Seftel	<b>GLOBAL GUMBO</b> with Craig Miller and Randy B.	<b>GLOBAL GUMBO</b> with Alana Kimbel	<b>GLOBAL GUMBO</b> with Greg Campbell	<b>SOULFUL SOUNDS</b> with Ebay	<b>WAKE UP CALL</b> with Dave Sieger	1:00
2:00								2:00
3:00	<b>BLUEGRASS EXPRESS</b> with Bob and Rex Flinner and 'The Old Man'	<b>DRIVE TIME</b> <i>Rock, blues, folk, soul, world beat, and more</i>					<b>SMILE JAMAICA</b> with Robert Nelson	3:00
4:00								4:00
5:00	<b>RIDERS RADIO THEATER</b>		with Steve	with Mike	with Bill Boyd	with Chuck Bradley or Lance Drummond		5:00
6:00	<b>FRET N' FIDDLE</b> with Lewis Downey, Mark Cantor, or Mike Evans	<b>PACIFICA NEWS</b>						6:00
7:00		<b>SOUND TRACK '91</b>						7:00
8:00	<b>NEW DIMENSIONS</b>	<b>ASIAN CHIMES: RADIO PHILIPINO</b>	<b>ASIAN CHIMES: VOICE OF POLYNESIA</b>	<b>ASIAN CHIMES: CHINESE RADIO</b>	<b>ASIAN CHIMES: VOICE OF VIETNAMESE</b>	<b>S.O.A.P.</b> with Sam Smith	<b>LISTENER'S CHOICE</b>	8:00
9:00	<b>NEXUS</b> with Riversong	<b>RED, WHITE AND BLUES</b> with JR Rokich	<b>RADIO TROPICAL</b> with Nancy Fillat	<b>SLICK ROCK REGGAE</b> with Jeff Salt	<b>AURAL DECAY</b> with Dave S.	<b>RAPP ATTACK</b> with DJ Buzz		9:00
10:00							<b>STATIC RADIO</b> with Tristin and Bernice	10:00
11:00		<b>BLUE HIGHWAYS</b> with Truman	<b>RADIO BEMBA</b> with Coqui	<b>NITE ROOTS</b> with Papa Pilgrim	<b>SEREMOUS ROPES</b> with Richard	<b>POETIC INJUSTICE</b> with Ken Sullivan		11:00
12:00	<b>VARIABLES</b> with Scott Howard							12:00
1:00 AM		<b>TOTAL HARMONIC DISTORTION</b> with Alan	<b>MAXIMUMISNESS</b> with Eric	<b>DRIFT</b> with Kimberly	<b>DYER'S EVE</b> with Dave Dyer	<b>TO HELL AND BACK</b> with Les Nilsson	<b>NOCTURNAL EMISSIONS</b> with Mike	1:00
2:00	<b>AUDIO SYNERGY</b> with Bobi Fox							2:00
3:00								3:00
4:00	<b>ABSOLUTE ELSEWHERE</b> with Brian	<b>IN THE EXTREMIS</b> with Brian	<b>RED EYE RADIO</b> with Tim	<b>RANDOM ACCESS</b> with Doug Young	<b>MUSIC FOR YOUR EARS</b> with Tony Hodges	<b>SHORT TERM EFFECTS</b> with Dylan	<b>SONIC SLAUGHTERHOUSE</b> with JR Torina	4:00
5:00								5:00

By Lucy Fairchild

Welcome to summer Reading. KRCL's noontime foray into the world's loveliest and most powerful literature continues in July and August with a variety of hot weather delights. Our offerings span the range between millions of years and one hot July afternoon. Also included are a number of readings for our young, out-of-school listeners including *Beautiful Joe* by Marshall Saunders, and *Wingman* by Daniel Pinkwater. So, keep the radio close at hand for readings as summery as tomato and cucumber sandwiches fresh from the garden.

Here are some highlights for July and August, but remember—every day offers new pleasures.

**July**

7/4 *Picking Blueberries* from *String too Short to be Saved* by Donald Hall, read by Dietrich Epperson. An intimate moment shared between a young man and his grandfather, a lovely fragment of America.

7/10 *Thirteen Original Clan Mothers* by Jamie Sams. Raye Silvers returns with this month's installment of her year long journey.

**A DAY IN THE LIFE***continued from page 4*

many hosts over the years, each with their individual spin on vintage rock from the late 60's, 70's and even into the 1980's. John Florence is no exception. With an extensive personal record collection and broad experience in the radio field, he has become a popular fixture around KRCL. John likens "Saturday Sage" to the underground FM format which originated in San Francisco and New York in the late sixties. Ask John what he enjoys most about this three hour tapestry of "sound and word paintings," and he will tell you that it is heavenly. Florence continues having "Hot Tuna for Lunch," the tradition started by Mr. Baggins, wherein he plays a cut or two or three by the legendary band from the bay area.

At 1pm on Saturday afternoon, Dave Sieger takes over with the "Wake Up Call." This show's title conjures up memories of sleeping in until noon and blowing off all responsibilities until later in the day.

On any given Saturday afternoon, you will hear The Allman Brothers, Widespread Panic, Lou Reed, Neil Young,

David Byrne, the Beatles, Phish, and



7/17-7/20 *The Geology of I-80 Quartet* by John McPhee, read by Kerry Jensen. You'll never read driving across Nevada again.

7/27 *Memoirs of Lady Ottoline Morrell* read by Lucy Fairchild. The brightest minds and loveliest gardens of early, 20th century England.

**August**

8/8-8/10 In honor of the "dog days" of August, Reading presents *Beautiful Joe* by Marshall Saunders, read by Kaye Wankier, fifth grade teacher extraordinaire. What could be better than this lovely children's story ready by a story-time pro?

8/14-8/16 *Naked by the Window* by Robert Katz, read by Hikmet Dogu. Sex, betrayal, and murder—or was it suicide? Perfect stormy weather fare, and all true to boot.

8/30-8/31 By request, the work of *Gertrude Stein*, read by Babs DeLay. A rebroadcast of a reading originally done in 1986.



Pink Floyd just to name a few. It's very apparent that he loves doing the "Wake Up Call." After all, he drives about one hundred miles round trip every Saturday just to do his show.

Robert Nelson has been the host of "Smile Jamaica" for almost six years. Robert's vast knowledge of reggae music and the artists who perform it started when he listened to a Black Uhuru album entitled "Anthem," soon after enrolling in the University of Utah. "Smile Jamaica" is heard from 4 to 7pm every Saturday afternoon, but Robert also contributes to a reggae group on the internet at [rec.music.reggae](http://rec.music.reggae). He has sent tapes of his show to people in other parts of the country and other parts of the world. If you would like to contact Robert via e-mail, you can do so, at: [rmelson@alexandria.lib.Utah.edu](mailto:rmelson@alexandria.lib.Utah.edu).

"Listener's Choice," is brought to you from 7 to 9pm in the evening. Anyone (and I do mean anyone) can submit a playlist by writing to: Marie Blackwood, c/o KRCL Listener's Choice, 208 West 800 South, Salt Lake City, UT 84101. People have done such unusual shows on Listener's Choice as famous TV theme songs, original poetry, Elvis Presley's early blues recordings, ragtime piano, and zydeco Mardi Gras music. You should definitely give it a try!

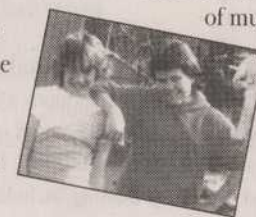
*continued on page 15*

By Donna Land Maldonado

What were you doing in the summer of 1980? I don't mean you youngsters who were just being born! I mean those of us who have been on this earth long enough to have a memory of the 80's decade. Well, allow me to remind you it was the decade that Community Radio stations 'sprang' up all over the country. Yes, there are some stations that are twenty years or older, but the vast majority of community stations are twenty years or younger... like KRCL, (15.) Despite the fact that it is a more tolerable world, there is still a great need for media outlets, like KRCL, to present the "non-partyline", to give a more holistic picture of our world—through discussion, opinions, updates, and music. One grows through exposure to the new and/or different. KRCL is still new and still different. When's the last time you heard the Gyuto Monks on radio or heard another side of the excommunicated women by the dominate religion? When have you heard accents that really made you listen or rhythms that stirred your soul? Readings that made you laugh or cry, public service announcements that promoted you into action or help solve a concern? It happens everyday here, on 91FM, and it happens all over the

**A DAY IN THE LIFE***continued from page 14*

Infectious laughter. These are the first two words which popped into my head when I thought of how to describe "Static Radio." Co-hosts Tristin and Bernice have been friends since they were in kindergarten in Magna. These two young women have massive enthusiasm when playing the newest music from the countless small record labels which have sprung up around the country within the past ten years. Bernice says Heavens to Betsy is her current favorite band while Tristin likes Descendents. Tristin and Bernice emit a type of undiluted energy which carries



country on local community stations, whom have a mission, a reason, for existing - to reflect the community it serves, to give access to those who's power, money or political clout cannot get them access through the regular media outlets. To become complacent, would be like painting our world with limited colors within a limited space. We must not forget what has been gained by the civil rights movement, the fight for all voices to be heard, we must continue to support whatever is of value to us. You don't have to be a political person to let your congressional representative, state or city representative know how you feel and why. Some of the most powerful statements come from the heart of "ordinary" people. Whether it's a letter or a call to support KRCL, the wilderness, more housing for the underprivileged, or to oppose closed legislative hearings - take responsibility, if not for yourself, then for the future generations.

Have a warm peaceful summer and listen to the summer special on THINKING ALLOWED - a good explanation point! to the paragraph above. It airs on Thursday evenings at 6:30pm.

Donna



out over the radio waves between 9pm and midnight every Saturday night. They once did a Radiothon special called "Gals in Grunge"—these 'gals' like the idea of sharing these very new and sharp-edged bands with their audience. KRCL 91FM is one of the few places you will hear music with limited commercial potential and programmers who are proud of that fact. The Saturday mix of music explores many facets of rock and roll with a little ethnic spice thrown in for good measure. ✓



*Graywhale CD*

CD's under \$10  
Salt Lake City,  
Ogden, Provo, Logan  
583-9626

N O W  
featuring  
U T A H  
G R O W N  
fruits &  
veggies



1300 South 1100 East  
467-2434

**Circle Pottery**

Studio • Gallery • Classes • Supplies

Fine Quality Stoneware  
Hand-made On-site  
By Don MacDonald  
with emphasis on  
Affordable, Functional Pottery

232 East 800 South, SLC  
596-1350

# Public Affairs

## Morning Light

### SUNDAYS 6:30AM

"Crossroads," Achievements, issues and stories presented from a culturally different perspective.

### MONDAYS 5:30AM

### TUESDAYS 5:30AM

"Common Ground," a look and discussion of global affairs, produced by the Stanley Foundation.

### WEDNESDAYS 5:30AM

Repeat of different public affairs programs, plus W.I.N.G.S. once a month.

### THURSDAYS 5:30AM

"CounterSpin," produced by FAIR, Fairness & Accuracy In Reporting, the national media watch group based in New York. Hosted by Laura Flanders and Martin A. Lee.

### FRIDAYS 5:30 AM

High Plains News or National Native News.

## Riders Radio Theater

### SUNDAY 5:00PM

New age cowpoke humor, zaniness and cowboy music by Riders in the Sky.

## New Dimensions

### SUNDAY 7:00 PM

A timeless and relevant interview series particularly well suited for the "inner directed" audience. Hosted by Michael Toms.

JULY 2 "Coming into Fullness," with Gloria Steinem - one of the most influential leaders of the American women's movement, offers a new perspective on the current situation, and what comes next. Founder of

MS magazine and author of MOVING BEYOND WORDS. #2466

JULY 9 "Future Medicine," with Daniel Goleman, author, describes how various formerly "alternative" therapies are now being accepted into orthodox science. He further states, it is the medicine of your future and he will explain what to expect. #2411

JULY 16 "Rediscovering The Power of Rhythm," with Reinhard Flatischler and Cornelia Jecklin, musicians who explain how the excursions into rhythmic consciousness are so enjoyable and therapeutic. Specific rhythms affect the brainwaves and health of all humans in profound and specific ways. Rhythm, says, Flatischler, "connects the conscious, the unconscious and all the layers in between...trust in rhythm transfer to trust of life, trust of self." #2456

JULY 23 "Integrity in Business," with Carol Orsborn. Is it necessary to sacrifice health, peace of mind and spiritual values for success in business? Emphatically not, says Orsborn. Despite the challenges that naturally accompany living with faith and principles, "There was no discrepancy between taking care of self and success." She shares seven principles for success with integrity. #2503

JULY 30 "Bringing Spirit to Work," with Barry Schieber, formerly a successful investment advisor and now dean of the Nyingma Institute, has had decades of training, including five years of solitary retreat, under



Tibetan lama Tarthang Tulku. Schieber uncovers some basic questions that will lead us to find meaning and satisfaction in the work we do. #2497

AUG 6 "Quantum Consciousness," with Danah Zohar. This dialogue explores the possibility of a new understanding of the nature of human consciousness, physical reality, God, creativity, social activity, the future of science and more. #2508

AUG 13 "The Search for Meaning and Wisdom," with Tony Schwartz, who stresses the need for both inner and outer involvement, who puts self-development into a practical, outer-world context suited to western minds and lives. #2524

AUG 20 "Birth and Violence: The Social Impact," with Barbara Fendeisen, Bruce Lipton and others. A small number of health professionals have been working diligently to show how the roots of violence can take hold in prenatal life...Trauma surrounding birth and dysfunctional relationships between parents and infants foster the creation of a violent individual. #2529



Authentic Native American  
Handcrafted Jewelry and Art  
252 South Main  
Salt Lake City  
364-2961

## NIZHONI TRADING COMPANY



INDIAN HANDMADE  
JEWELRY, POTTERY  
KACHINAS, MUSIC  
FTC. 262-7345  
FASHION PLACE MALL  
6194 S. STATE, MURRAY, UTAH

AUG 27 "State of the World 2000," with James Garrison, president of the Gorbachev Foundation, speaks about the state of the world forum, bringing together world leaders for the creation of a global trust to address the issues. #2530

SEPT 3 "The Medicine Way of Life," with Hyemeyohsts and Swan Storm.

## Reading

### WEEKDAYS 12:00 PM

Short stories, novels and/or essays read by a variety of readers from a variety of different sources.

## Our Arts

### MONDAYS 12:30 PM

Interviews with local or visiting artists. Produced by alternating hosts: Stacey Cole, Brian Crockett, Kim Duffin, Helene Elbein, Carleen Jimenez, Betsy Quintana, Mary Lou Reitz, and Marilyn Scharine.



JULY 3 More Shakespeare! Marilyn and Richard talk with Daniel E. Kramer about the summer Shakespeare productions in Salt Lake City.

JULY 10 Kim Duffin and Casey Jarman will discuss details of the upcoming Twilight Concert Series which begins July 13.

JULY 24 Hosted by Stacey.

JULY 31 Helene talks with Mary Johnston Corcie about a dance workshop for choreographers to develop new works.

AUG 7 "Underneath the Western Skies," folk art from Utah ranchers, a show at the Chase Gallery. Hosted by Betsy.

AUG 14 Bryan discusses "Choices in the 20th Century," a public library project that combines ethics and American foreign policy.

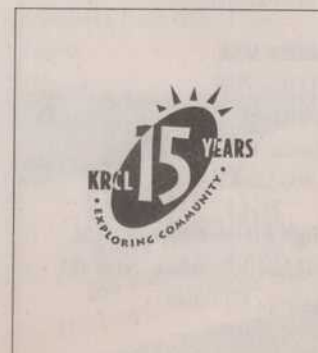
AUG 21 Mary Lou's guest is Alane Ferguson, author of literature for children and young adults.

AUG 28 Betsy meets with David Ritchie Johnson to discuss the restoration of Helper, Utah as an artists' community.

## People's Business

### TUESDAYS 12:30PM

Discusses on community and social concerns. The first Tuesday Lynne McCue Hamilton is the host, with Robyn Simper the second, Iginia



Boccalandro the third. The fourth Tuesday is left open for spontaneity!

## Concerning Gays and Lesbians

### WEDNESDAYS 12:30PM

News and information from Utah's gay and lesbian population, with Becky and/or Jeff.

## Lunch Encounter

### THURSDAYS 12:30PM

### JULY 6: Museum Notes.

Host Marlena Lambert Tempest explores the natural world with various guests.

### JULY 13: Utah Issues.

Bill Walsh discusses the social concerns with host, Susan Weisenberg.

### JULY 20: Senior Sound Off.

Host, David Turner, Division of Aging Services, talks with and about the older population.

### JULY 27: Not Just Jello

Laurie Johnson conducts conversations about contemporary Mormonism.

### AUG 3: Museum Notes

### AUG 10: Utah Issues

### AUG 17: Senior Sound Off

### AUG 24: Not Just Jello

### AUG 31: TBA

## La Voz de la Gente

### FRIDAYS 12:30PM

Guests talk with Rebecca Chavez-Houck and Lee Martinez about the topics of advocacy, service, information, political and cultural concerns... of and about Utah's Hispanic population.

## Pacifica News

### WEEKDAYS 6:00PM

National and international news from an alternative point of view.

Produced by the National Pacifica News Department.

### Sound Track '91

#### MONDAYS 6:30PM: Local and National Public Affairs on Women

Political and social issues of particular concern to women.

#### TUESDAYS 6:30PM: Latino USA

The Radio Journal of news and culture for the Latin population in English.

#### WEDNESDAYS 6:30PM:

##### In The Opinion Of...

A local production on issues of today from a local perspective, with Mark Hampton and/or Ann Floor.

#### THURSDAYS 6:30PM: Thinking Allowed

#### FRIDAYS 6:30PM: Crossroads

Achievements, issues and stories presented from a culturally different perspective.

### Short Features

#### MONDAYS 7:30AM: Arboretum Report

#### MONDAYS 5:00PM: Southern Utah Wilderness Alliance Update

#### TUESDAYS 11:30AM: Because We're Here

#### TUESDAYS 5:00PM: Environmental Update

#### WEDNESDAYS 11:00AM: Polski Skripts

#### WED 12:55PM: Because We're Here

#### WEDNESDAYS 5:00PM: The Working Class Report

#### THURSDAYS 9:30AM: Rape Crisis Report

#### THURSDAYS 10:30AM: Women's News

#### THURSDAYS 11:30AM: Women of History

#### SUNDAYS 9:57AM: Environmental Update

#### DAILY 6:30AM AND 1:30PM:

##### Environmental Action Report

#### DAILY 5:30 AND 10:00PM: Stardate

#### WEEKDAYS 7:00, 7:30 AND 8:15AM: Traffic Report

#### WEEKDAYS 7:00AM AND 2:58PM: Earth and Sky

#### WEEKDAYS 6:28PM: Letters to the Editor

#### National Public Affairs Programs on KRCL

For further information, copies, transcripts, etc. please contact the producers directly.

#### New Dimensions

PO Box 410510  
San Francisco, CA 94141  
415-563-8899

#### Counterspin

Fairness and Accuracy in Reporting (FAIR)  
1-800-847-3993

#### Pacifica Radio Archives

3729 Cahuenga Blvd West  
North Hollywood, CA 91604  
818-506-1077

#### National Native News

APRN  
810 East 9th Ave  
Anchorage, AK  
907-277-2776

#### WINGS

PO Box 33220  
Austin, TX 78764  
512-416-9000

#### Crossroads

PO Box 1685  
Philadelphia, PA 19105  
1-800-922-9683

#### Latino USA

PO Box 7789  
U of TX at Austin  
Austin, TX 78713-7789  
1-800-535-5533

#### High Plains News Service

104 North Broadway, Suite 412  
Billings, MT 59101  
1-800-729-3540



### Alternative Rock/Industrial

#### MONDAYS 3 AM Absolute Elsewhere

Avante-pop. Dark ambience, and things of uncommon nonsense. Hosted by Brian.

#### TUESDAYS 1 AM Total Harmonic Distortion

From Neubauten to Clock DVA, this is hard, angst-ridden, disturbing industrial. Hosted by cyper punk Alan.

#### TUESDAYS 3 AM In the Extremis

Post-industrial sound scrapes from the edge of the abyss. With host Brian.

#### THURSDAYS 10:30 PM Seremous Ropes

Alternative rock—R.E.M., The Smiths, Prefab Sprout—with host Richard.

#### SATURDAYS 4:00 AM Short Term Effects

Mostly dark music, from the Sisters of Mercy to Siouxsie and the Banshees, and Sol Invictus to Nick Cave. With host Dylan.

#### SATURDAYS 9:00 PM Static Radio

Bubblegum-punk-rock-indie-sub-



Fresh Pastas  
Vegetarian Specialties  
Meat Dishes  
Expresso Drinks  
Delightful Deserts  
Live Music on weekends

#### Hours

Monday - Thursday - 11:00 a.m. - 9:00 p.m.  
Friday - Saturday - 11:00 a.m. - 10:00 p.m.  
Sunday - 5:00 a.m. - 9:00 p.m.

500 South 60 West • Salt Lake City, Utah  
(801) 364-4914

core. Tristin and Bernice are your zany tour guides.

#### SATURDAYS 12 AM Nocturnal Emissions

A diverse mix of everything alternative. All the stimulation your late night activities could need. Slack music for slack people. Hosted by Mike.

### Blues R&B

#### MONDAYS 8 PM

##### Red, White, and Blues

Explore the wide variety of this distinctively American musical form, with a smattering of its offspring. J.R. Rokich hosts.

#### MONDAYS 9:30 PM KRCL Presents

##### Live Blues Broadcasts

Last Monday of each month at the Dead Goat Saloon.

#### MONDAYS 10:30 PM Blue Highways

Truman brings you electric blues, from the sixties to the hottest artists now on tour. Tune in for the best in

soulful guitar, harmonica and horns.

#### WEDNESDAYS 3:00 PM Drive Time

Rock, blues, folk, reggae, and more with host Mike.

#### THURSDAYS 9 AM Women: The Second Decade

Babs DeLay shares the accomplishments of women from the 1920's to the 1990's.

### Ethnic/World

#### SUNDAYS 7 AM Living the Circle of Life

Native American music, news and information with host Max Packineau. National Native News airs at 8:30 am.

#### MONDAYS 1 PM Global Gumbo

An entertaining as well as educational experience from Afro-beat—Zouk, including the 3 R's: Rumba, Rapso, and Rara. With your host Steven Seftel.

#### MONDAYS 7 PM Asian Chimes: Radio Pilipino

Experience the Philippines—their music and news. Keep up with the latest "Pinoy" happenings. Hosts Vic Fernandez and Joseph Moratalla.

#### TUESDAYS 1 PM Global Gumbo

Music from around the globe. Hosted by Craig Miller and Randy B.

#### TUESDAYS 7 PM Asian Chimes: Voice of Polynesia

Music from Samoa, Tonga, Tahiti, and other Pacific Islands with alternating hosts—Wayne and Ellen Selu, Joel Uluakiola, and Danny Tapeta.

#### TUESDAYS 8 PM Radio Tropical

Bossa Nova, Merengue, Cumbia, Latin Jazz and more sounds of Central and South America, hosted by Nancy Fillat.

#### TUESDAYS 10:30 PM Radio Bemba

Music from the Caribbean, Central, and South America continues, featuring Salsa, Merengue, Cumbia and more with host Coqui.

#### WEDNESDAYS 1 PM Global Gumbo

Music from around the globe with Alana Kimbel.

#### THURSDAYS 1 PM Global Gumbo

Musical jaunts around the globe, set to break all barriers with Greg Campbell.

#### THURSDAYS 7 PM Asian Chimes: Voice of Vietnamese

With host Dung Hoang.

#### SATURDAYS 7 AM Sangeet Malar

From the subcontinent hosted by Uma Khandkar and Anjali Deshpande.

### Folk/Bluegrass

#### SUNDAYS 10 AM Sagebrush Serenade

Music to ease you from your morning cup through your Sunday afternoon. Folk and rock with a country flavor with alternating hosts Phil Lanouette and Rick Stayer.

#### SUNDAYS 2 PM Bluegrass Express

Join "The Old Man" for the best in bluegrass music at the root of country and folk tunes popular today.

#### SUNDAYS 5:30 PM Fret 'N' Fiddle

... from the campfires of the 1840's to the honky tonks of the 1940's... with your hosts Lewis Downey or Mike Evans, or Mark Cantor who presents British Isle sounds.

#### MON-FRI 6 AM Breakfast Jam

A savory blend of acoustic, folk, and bluegrass tunes stirred up with various hosts. A pleasant start to your day.

EXPERIENCED  
BOOKS  
recycled reading



2150 S. Highland Dr.  
Salt Lake City, UT 84105  
467-0258

ACOUSTIC  
MUSIC



Come on in!  
We have three  
rooms full of  
guitars!

857 E. 400 S. • 531-7066

Gardiner  
Distributing  
554 West 100 South  
Salt Lake City, Utah 84101

**TUESDAYS 9 AM Women or Nothing**  
Cynthia Davis, Tami Fraser or Cissy McAndrew present a variety of music by women. Rock, jazz, soul, folk, country, all by women.

**TUESDAYS 3:00 PM Drive Time**  
Join Steve for mostly "urban folk," but don't be surprised to hear some blues, zydeco, or world beat.

**WEDNESDAYS 9 AM Le Cafe Folk**  
Contemporary folk music with a touch of tradition and world hosted by Donna.

#### Metal/Hardcore

**SUNDAYS 3 AM**  
**Sonic Slaughterhouse**  
Industrial hard-core, grind core, death metal with JR Torina.

**FRIDAYS 1 AM Dyer's Eve**  
Host Dave Dyer offers a variety of thrash and speed metal.

**SATURDAY 1 AM To Hell and Back**  
Les Nilsson offers a splattering of

thrash, speed, industrial grindcore, and death metal. Your parents will hate it.

#### New Age/Electronic

**SUNDAYS 8 PM Nexus**  
Electronic and acoustic music with River Song.

**SUNDAYS 11 PM Variables**  
Electronic, new age and contemporary jazz with your host Scott Howard.

**MONDAYS 1 AM Audio Synergy**  
Host Bobi Fox plays a variety of sounds, including industrial, space and electronic.

**MONDAYS 9 AM Psalms to the Mother**  
From neoprimitive to post-renaissance. Music to soothe the soul and soar with the senses. Ancient, modern, ambient, avante. Host Kevin Florendo.

#### Reggae

**WEDNESDAYS 8 PM Slick Rock Reggae**  
Selector Jeff Salt comes in with all

styles of reggae mixed in a way you're not likely to hear elsewhere.

**WEDNESDAYS 10:30 PM Nite Roots**  
Reggae, reggae, reggae with Papa Pilgrim. Listen for "Reggae Runnings"—upcoming reggae events.

**SATURDAYS 4 PM Smile Jamaica**  
The tradition continues: from Spongi Reggae to deep dish Dub. Host Robert Nelson serves up strictly roots.

#### Rock

**MONDAYS 3:00 PM Drive Time**  
An eclectic synthesis of voices from blues, folk, R&B, and rock.

**TUESDAYS 3:30 AM Red Eye Radio**  
Hosted by Tim.

**WEDNESDAYS 3:30 AM Random Access**  
As the name implies, a culinary delight based on folk, rock, some R&B, with a sprinkling of world, bluegrass, jass and the blues thrown in to spice the mix. Host Doug Young.

**THURSDAYS 3:00 PM Drive Time**  
An aesthetically precise selection of rock, folk and related music. We do try to be lively. Hosted by Bill Boyd.

**THURSDAYS 8 PM Aural Decay**  
A diverse mix from rock to reggae. You want covers? We got 'em. If they don't fit, we'll take 'em in a little. Hosted by Dave S.

**FRIDAYS 10:30 PM Poetic Injustice**  
Rock, Blues, Old and New Wave. Spine-tingling, mind-tingling tunes covering the past thirty years, with host Ken Sullivan.

**SATURDAYS 10 AM Saturday Sagebrush Serenade**  
A musical history lesson without the lecture.

**SATURDAYS 1 PM Wake Up Call**  
With host Dave Sieger

#### Soul/Rap/Urban

**THURSDAYS 3:30 AM Music for Your Ears**  
With host Tony Hodges.

**FRIDAYS 9 AM Rhythm Traxx**  
A collection of soul and jazz with occasional rap. A twist of oldies and dusties will lighten the mood. Hosted by Jonathan Cloud.

**FRIDAYS 1 PM Soulful Sounds**  
Soul, rap, '70's to '90's with host Ebay.

**FRIDAYS 3:00 PM Drive Time**  
Chuck Bradley or Lance Drummond bring you rhythm and blues, old rock 'n' roll.


**FRIDAYS 7 PM S.O.A.P.**  
Sounds of a party. Sam Smith keeps

you up to date with the rest of the world.

**FRIDAYS 8:30 PM Rapp Attack**  
Hard-core rap with host DJ Buzz.

#### Women's Programming

**TUESDAYS 9 AM Women or Nothing**  
Cynthia Davis or Tami Fraser present a variety of music by women. Rock, jazz, soul, folk, country. Women's news and information included.

**THURSDAYS 9 AM Women: The Second Decade**  
Babs DeLay shares the accomplishments of women from the 1920's to the 1990's. Women's News, Rape Crisis Report, and specials on women in history. 

SEPTEMBER • SINGASONG

# EARTH WIND & FIRE

ABRAVANEL HALL • AUGUST 19  
SATURDAY 8PM

TICKETS AT ALL ALBERTSONS ART TIX OUTLETS OR



CALL 355-ARTS



Presented by Space Agency Concerts & Theatricals and Magic Promotions

SHINING STAR • FANTASY

FreeWheeler  
Pizza

The Preferred Pie  
Delivered FREE

Sugarhouse

1624 South 1100 East

486-3748



Try our Sourdough  
Super Subs and zesty  
Lasagna!

Choose from over 30  
delicious toppings!

Deluxe Salads  
Famous Garlic Rolls  
Cold Sodas

Mention KRCL  
and receive 1  
dozen famous  
Garlic Rolls  
with any Large Pizza Order.  
(not valid with other discounts)



FreeWheeler  
Pizza

Mount Olympus  
Spring Water

1826 So. 3730 W.  
Salt Lake City

Riders'  
Radio  
Theater


It's the Cowboy Way!

brought to you by  
Bakers C&C  
doing business  
THE COWBOY WAY!

#### THE KRCL PROGRAM GUIDE

is published bi-monthly by Listeners' Community Radio of Utah, Inc. a non-profit corporation. Unsolicited submissions are welcome but cannot be returned. The editor reserves the right to edit any manuscripts to conform to standards in accordance with KRCL policy. All letters, manuscripts, photos or artwork should be sent attention: Managing Editor, Tristin Tabish, KRCL Program Guide, 208 W. 800 South, Salt Lake City, UT, 84101. Opinions expressed are not necessarily those of KRCL's volunteers, staff or Board of Trustees.

**Our Address:** KRCL, 208 West 800 South, Salt Lake City, Utah 84101. Our office phone is (801) 363-1818. Our E-mail address is [krcl@xmission.com](mailto:krcl@xmission.com).

**KRCL** is a 16,500 watt listener-sponsored community radio station broadcasting to over 1.4 million people. **KRCL** can be found on the dial at 90.9 FM, on 96.5 in Park City, and on **KZMU** at 89.7 FM in Moab, Utah. 



SALT LAKE CITY PUBLIC BROADCASTERS WELCOME



Red Butte Garden

# SUMMER CONCERT SERIES

Sunday, June 11  
**John McEuen  
and Vassar Clements**  
with Jonathan McEuen

Sunday, June 25  
To Be Announced

Sunday, July 16  
**Binkley-Woodbury Duo**

*Bring a Picnic &  
Enjoy the Music!*

It's the weekend — make a  
break for the hills!

Enjoy Sunday evenings with  
friends, music and the  
beautiful outdoor setting  
of Red Butte Garden.

Tickets go on sale May 5 at  
all ArtTix™ locations.

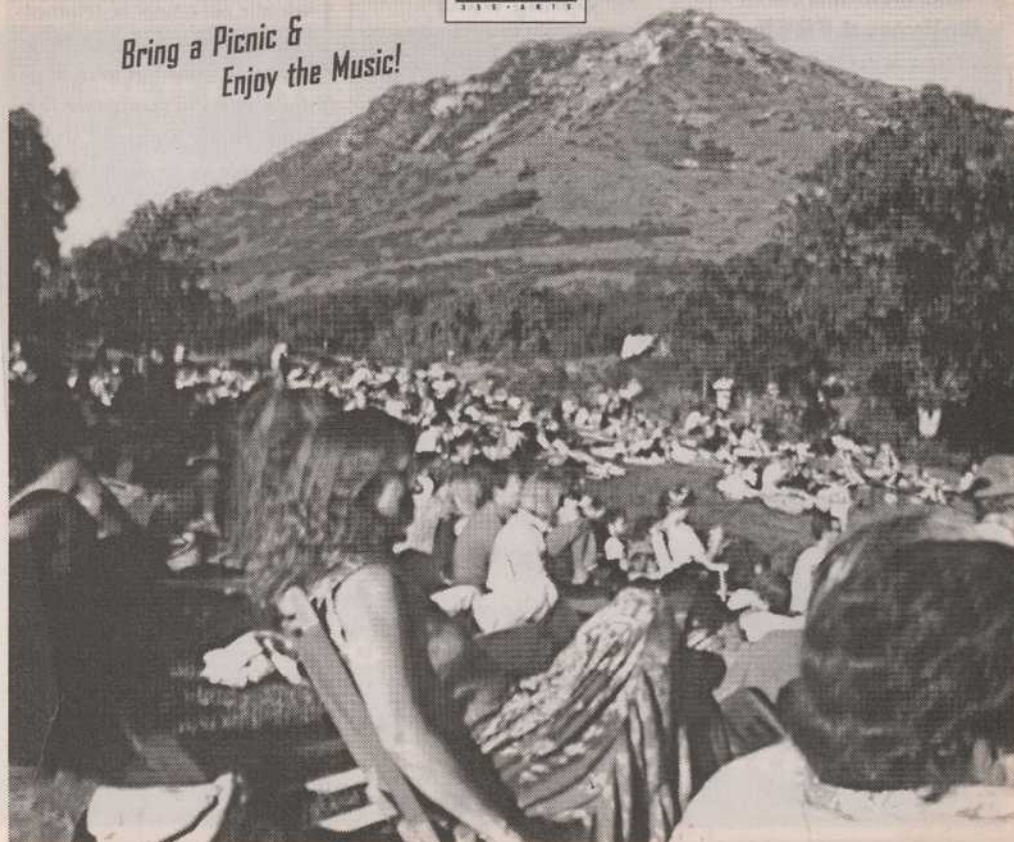
Get discounts by purchasing  
season tickets or by  
becoming a Garden member.



Sunday, July 30  
**Riders in the Sky**

Sunday, August 13  
**Zachary Richard**

Sunday, August 27  
**Asleep at the Wheel**  
with Bob Wills'  
Texas Playboys



THANK YOU!

Support These Underwriters

**Acoustic Music**

857 East 400 South

**American West Analytical  
Laboratories**

463 West 3600 South

**The Anatomy Academy**

322-0500

**Associated Students of the  
University of Utah**

581-6866

**Awakening Spirit Massage  
School**

532-5018

**Babs DeLay, Realtor**

467-2100

**Baker's C&C, Inc.**

367 West Paxton (1170 S.)

**Brackman Bros. Bagels**

Four locations

**Cafe Mediterranean**

60 West 500 South

**Café Molise**

55 West 100 South

**Cal Nez Design**

425 East 100 South

**Chameleon Artwear**

875 East 900 South

**Catalyst**

140 S. McClelland St.

**Compact Discounter**

3300 South 3008 East

**Corporation for Public  
Broadcasting**

Washington, D.C.

**Cosmic Aeroplane**

1300 South 900 East

**Cream O'Weber**

Look in your local grocery store

**Dan's Foods**

Salt Lake City

**Downtown Storage**

29 West 800 South

**The Event Magazine**

Distributed Along the Wasatch

**Gardiner Distributing**

554 West 100 South

**Graywhale CD**

Salt Lake City, Ogden, Provo, Logan

**Health and Wellness Massage**

322-0192

**Hispanic Yellow Pages**

943-5295

**The Inn at Prospector Square**

1-800-453-3812

**Intermountain Guitar and Banjo**

712 East 100 South

**Intermountain Litho Printing**

4030 South 500 West

**Liberty Heights Fresh**

1300 South 1100 East

**Mt. Olympus Waters, Inc.**

1825 South 3730 West

**Nizhoni Trading Company**

Located in the NE corner of  
Fashion Place Mall

**Norton's Eatery**

255 East 400 South

**Overnight Graphics**

533-0435

**The Park Cafe**

604 East 1300 South

**Patagonia Outlet**

3267 Highland Drive

**Phillips Gallery**

444 East 200 South

**Pratt Sound**

973-4222

**Private Eye Weekly**

Distributed along the Wasatch

**Ruby's Catering**

564 South 3rd Avenue

**Salt City CD's**

878 East 900 South

**Salt Lake Art Center**

328-4201

**Salt Lake Pizza & Pasta**

1063 East 2100 South

**Salt Lake Roasting Co.**

320 East 400 South



**Space Agency Concerts and  
Theatricals**

355-2200

**Sunrise Press**

252 West 1300 South

**The Sun: A Private Club  
For Its Members**

702 West 200 South

**T P Gallery**

252 South Main

**United Concerts**

536-1234

**Utah Museum of Natural  
History**

University of Utah

**Video One**

484 South 900 West

**Wasatch Design**

4679 S. Holladay Boulevard

**Wasatch Mountain Times**

649-8046

**Wasatch Touring**

702 East 1300 South

**Wild Rose**

702 Third Avenue

**Zephyr Club**

301 S. West Temple



**Mountain Biking?**  
We Do It! It's that simple.

**Wild Rose**  
702 Third Ave.  
533-8671

KRCL 91FM

208 West 800 South  
Salt Lake City, Utah 84101

NON-PROFIT  
ORGANIZATION  
U.S. POSTAGE  
**PAID**  
SALT LAKE CITY, UTAH  
PERMIT NO. 3973

*Please notify us of any change of name or address. The post office will not forward the Program Guide*

U T A H  
**JAZZ & BLUES**  
F E S T I V A L

July 28 & 29, 1995

FRIDAY, JULY 28 - 6 PM

ROBERT CRAY BLUES BAND

JOHN HAMMOND

NICK GRAVANITES & "ANIMAL MIND"

...

SATURDAY, JULY 29 - 5 PM

TITO PUENTE SALSA/JAZZ EXPLOSION

IGOR BUTMAN + 5 • CALIFORNIA GUITAR TRIO

FREDERICK JAMES McCRAY

LATE NIGHT JAM SESSIONS BOTH NIGHTS!



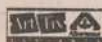
snowbird  
event center



TICKETS AT SNOWBIRD AND ALL ART TIX LOCATIONS OR CALL

**355-ARTS**

OVERNIGHT PACKAGES FROM \$53 PER PERSON, DOUBLE OCCUPANCY. INCLUDES ROOM,  
SHOW TICKET, TRAM RIDE, CONTINENTAL BREAKFAST, AND TENNIS.  
FOR PACKAGES CALL: 800-453-3000.



COOLERS ON LAWN SEATING ONLY. COVERED SEATING IS ON A FIRST COME,  
FIRST SERVED BASIS. ALL SALES FINAL, NO EXCHANGES, NO REFUNDS.

