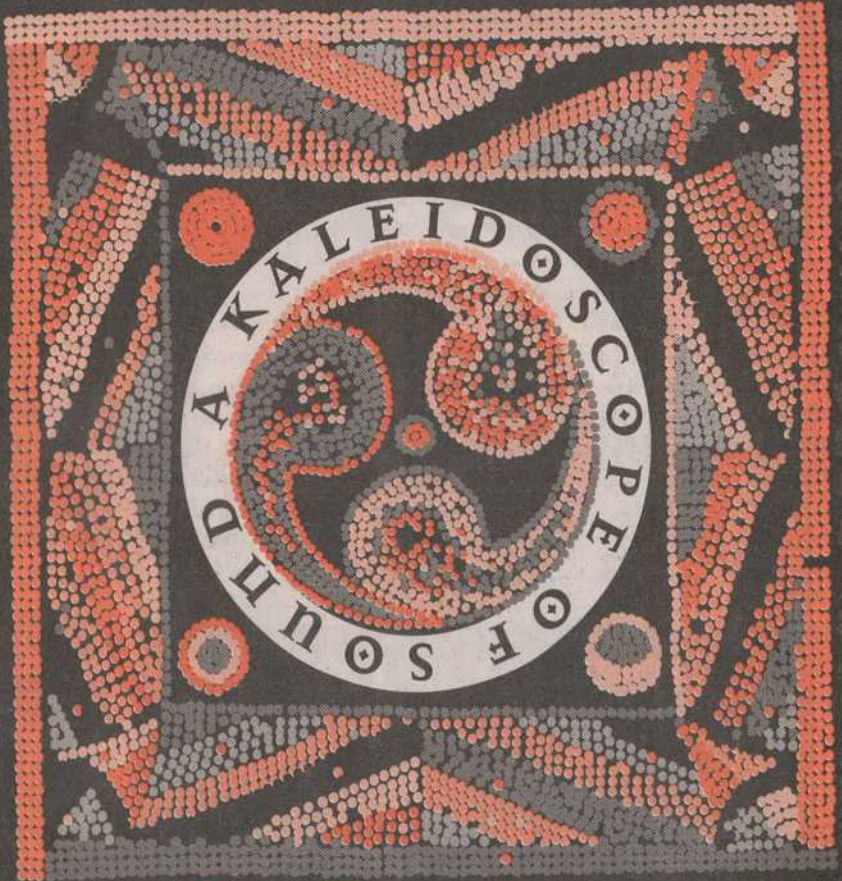


V
O
-
C
E
S

91FM KRCL



COMMUNITY
RADIO FREE
UTAH

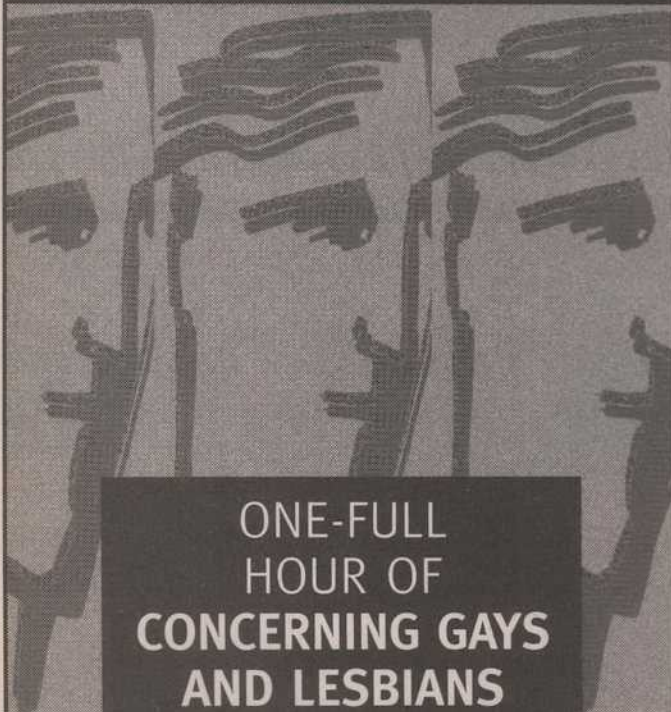
KRCL
91FM



FALL RADIOTHON ■ OCTOBER 5-14

Volunteers: Cindy Aperges-Davis, Mickey Applebaum, Rob Baker, Dan Benaducci, Marie Blackwood, Randy Block, Iginia Bocalandro, Bill Boyd, Chuck Bradley, Deena Brazy, Keith Browning, Deb Burrington, Mark Cantor, Pei-Pei Chang, Rebecca Chavez-Houck, Alan Chow, Mike Christy, Jonathan Cloud, Steve Connor, Brian Crockett, Babs DeLay, Pat Dell, Anjali Deshpande, Lance Drummond, Kim Duffin, David Dyer, Jim Elder, Mike Evans, Yan Fang-Magnusson, Nilsa Feliciano, Victor Fernandez, Nancy Fillat, Ellen Fisher, Doc Floor, Ann Floor, John Florence, Kevin Florendo, Tami Fraser, Jeff Freedman, Bernice Halladay, Ebay Hamilton, Ann Hanniball, Mark Hampton, Brian Hansen, Doug Harding, Tanya Hawkins, Dung Hoang, Marc Hoenig, Tony Hodges, Scott Howard, Ziggy Jedrzyk, Tom Johnson, Sarah Jordan, James Jun, Glenn Keister, Brian Kelm, Uma Khandkar, Susan Kies, Jeff Kimball, Bill Komlos, Phil Lanouette, Guy Lebeda, Dylan Mace, Sohrab Mafi, Jorge Malca, Greg Marcial, Teresa Martinez, Cissy McAndrew, Lynn McCue-Hamilton, Dean Mednick, Chiedu Megwalu, Craig Miller, Susanne Millsaps, Maureen Mooney, Richard Moore, Alan Moss, Becky Moss, Tom Moss, Marian Nash, Robert Nelson, Les Nilsson, Tony Onofrietti, Charlene Orchard, Peter Orum, Max Packineau, Amanda Pahnke, Giovanna Percantino, Tony Polychronis, Betsy Price, Betsy Quintana, Bill Ramsay, Linda Reeder, Lou Reitz, John Rokich, Gerry Runyan, Teri Runyan, Susan Rutherford, Jeff Salt, Dave Santivasi, Marilyn Scharine, Richard Scharine, Jerry Schmidt, Steve Seftel, Dave Seiger, Ellen Selu, Raye Silvers, Myron "Buzz" Simon, Robyn Simper, Sam Smith, Rick Stayner, Jodi Stewart-Browning, Tim Stewart, Ken Sullivan, Esther Sun, Danny Tapeta, Bruce Thomas, Gary Timm, Monica Toledo, David Turner, Joel Uluakiola, Tito Valdez, Debra Venables, Mark Vaughn, Matthew Wallace, Susan Weisenberg, John Williams, Jo Wilson, Matt Wilson, Diane Winter, Leslie Wold, Truman Wold, Doug Young.

YOUR PLEDGE COUNTS



ONE-FULL
HOUR OF
CONCERNING GAYS
AND LESBIANS

Wednesday, October 9, 12 noon-1:00 p.m.

KRCL Staff

Donna Land Maldonado, *Program Dir.*
Paula Rokich, *Director of Business and Administration*
Tristin Tabish, *Development Director*
Bill Boyd, *Music Director*
Alana Kimbel, *Assistant Program Dir.*
Bobbi Fouts, *Administrative Assistant*

KRCL Board of Trustees

Stephen Holbrook, *Board Member Emeritus*
Fran Pruyn, *Chair*
Chris Cook-Keating, *Vice Chair*
Jo-Ann Wong Kilpatrick, *Secretary*
Tom Blackwood, *Treasurer*
Howard Lundgren, *Legal Advisor*
Robert Flores, *Board Member*
Robyn Nelson, *Board Member*
Paul Wharton, *Board Member*
Paul Frisby, *Board Member*
Anthony Scalse, *Board Member*
Becky Moss, *Volunteer Representative*
Tami Fraser, *Volunteer Representative*
Marian Nash, *Volunteer Representative*

KRCL's board meetings are open to the public on the last Wednesday of every month at 5:30pm at the station.

Community Advisory Board

Kathy Brooks, *CAB Member*
Jim Gonzales, *CAB Member*
Tona Treetop, *CAB Member*

Voices is designed and produced by
Kerman Design.
Cover Design by Dung Hoang.



Quiet Mountain Travel Specialists.
702 East 100 South
359-9361

LETTERS

KRCL welcomes comments and opinions from its listeners and will print all signed letters. KRCL reserves the right to edit offensive or inappropriate language.

Dear KRCL,

I saw your shirt on someone in Gig Harbor, Washington and would like to know if I could buy one (it's the red/purple/black "15 Years" design that went with your September/October '95 Radiothon). Actually, it was Rudy Lukez who volunteered there, and I waited on him in our local public library. Great shirt! I realize this is a small-chance request, I've enclosed a SASE for your reply. I would need a size "L."

Thanks,
Mae Litzengerger
Fox Island, Washington

Dear KRCL,

In my enthusiasm to congratulate Dave Young on a job well done I said in the last issue of "Voices" that, "Dave has taken the station from the very unstable place it inhabited eight years ago, to its current position of solidity." I realize now that I have done a disservice to previous station managers, particularly to John Green. Without taking anything away from Dave, I must say that each of the station's long-term general managers has made a lasting impact and each was working in a different political and economic climate. John took the station from having a \$50,000 deficit to a business which operated in the black. I can only hope that the new General Manager we are hiring now will have the skills and dedi-

Our Listeners Talk Back

RADIOTHON

Monday
October 7
1:00-3:00 p.m.

Women in Calypso

A 2-hour musical and historical showcase of female Calypsonians including interviews with some of the women who have claimed their rightful place in an artform that has traditionally eclipsed women.
Hosted by Steven Seftel

SPECIAL

cation that Steve, John and Dave have demonstrated.

Fran Pruyn
Board Chair, KRCL 91FM

Dear KRCL (Otis),

I spoke to you on the phone Saturday evening about 8:30 during your superb 5 hours of Grateful Dead jams. I mentioned that I just moved here and was turned on to KRCL by a friend the day before. So, my first good listen to you guys was on Saturday, May 18 from 10:00 a.m. until 12:00 p.m. After living in California and Hawaii, I can honestly say that was the best 14 hours of music I've heard in years. Is the "Saturday Sagebrush

Serenade" always that good? And do you always have "Dead" shows that superb? Anyway, my problem as I stated to you that night is that I desperately need a copy of those five hours of the Grateful Dead! I know nobody in town yet whom I can get a recording from. My stereo is in boxes as I just moved and I listened to the station all day, while I painted my house, on a small boombox with no taping capabilities. You said to leave a note in your mailbox and you could help me out. Please call soon! When do you do your fund drives? I'll contribute!
Desperate in Salt Lake,
Dana Currie

continued on page 8

by Guy Lebeda



Guy Lebeda

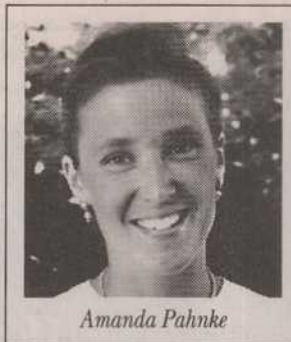
We got tired of being referred to as "R Rrrts," so the weekly half-hour arts show with a name like a growl has changed its name to ArtSpeak. We're still on Mondays at 12:30 until 1:00 p.m., and we'll continue to bring you news and special features about the arts community on the Wasatch Front and the whole state of Utah.

Like the other shows offered by KRCL, this show was started to fill a need in the community. Everyone covers the big SOBs (Symphony, Opera, and Ballet), but the newspapers and other mainstream media were not providing coverage for the wide



Marilyn Scharine

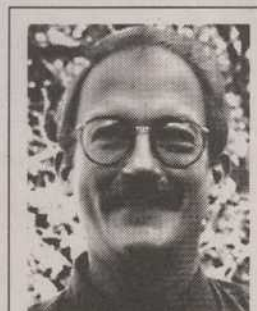
variety of artists and arts activities that exist outside the world of SOBs. Smaller arts organizations, ethnic arts and artists, and the many other aspects of our state's rich cultural and artistic



Amanda Pahnke

heritage were thriving, but were largely unknown to the public. But KRCL exists to provide coverage of things that the mainstream media ignore. That's why Our Arts was born and that's the continuing mission of ArtSpeak.

The same people you've known and trusted through the years will still be bringing you these special weekly shows. Marilyn Scharine, one of the show's founders and a long-time volunteer at KRCL, continues as



Kim Duffin

the guiding spirit behind the show, leading a rag-tag band of arts refugees as they attempt to bring you the Truth, the whole Truth, and nothing but the Truth about the world of art and artists in Utah.

While all the volunteers for this show cover any and every aspect of the arts world, each of them has a special area of emphasis. Brian Crockett reports on humanities issues



Brian Crockett

and the world of museums. Kim Duffin, of the Salt Lake City Arts Council, will keep KRCL listeners up to date on what's happening in "the big picture" of Salt Lake City's art scene. Guy Lebeda covers the literary happenings around the state. Amanda Pahnke keeps us informed about the performing arts. And Besty Quintana covers the visual arts and artists.

ArtSpeak brings you news and information about the world of art that you can't get anywhere else. For example, one



Jane Alexander

recent show included Amanda Pahnke's exclusive interview with the Chair of the National Endowment for the Arts, Jane Alexander, who was here in Salt Lake for the American Canvas Project. Another recent show featured a poetry reading by Salt

PLEDGE YOUR SUPPORT



Bluegrass Express
Sunday, October 13
2:00 p.m.-5:00 p.m.

Join "The
Old Man" for
The 3 R's
and a
Big Mon

Peter Rowan, Ralph Stanley, Tony Rice and Bill Monroe



Betsy Quintana

Lake City's Hector Ahumada and Orem's Alex Caldiero, recorded live at Kyle's Nada Bar in Bluff, Utah. Try getting that kind of show from KSL!

So, there you have it: same great show with a new great name...ArtSpeak. Don't miss it: same Bat-Time, same Bat-Channel. Mondays at 12:30 p.m. on KRCL 91FM.



Buying or selling
a home can
be fun as
well as
profitable!

• 12 year Full
Time Agent

• Licensed
Buyers or
Sellers
Agent

Lewis Wolcott
& Dornbush
REAL ESTATE

Babs
DeLay
Associate Broker
Director, Salt Lake
Board of Realtors

467-2100

Dan's
Bringing Salt Lake City
and Park City
Fresh Quality
Products And
Friendly Service

Video ONE
Utah's LARGEST Selection
of UNIQUE Videos
484 South 900 West • 539-0300

SALT LAKE PIZZA & PASTA
1063 East 2100 South • SLC • 801-484-1804

by Tristin Tabish, Development Director

I got my first look through a kaleidoscope when I was five.

I had inhaled an entire box of "Cracker Jacks" solely for the purpose of getting to the bottom to claim my prize. Finally reaching my destination, I frantically tore open the package and held the curious object in my hand. Squinting one eye, I peered through the end of the colorful cardboard tube.

Finally I had received a prize that surpassed the chewy crunch of caramel-coated popcorn! I distinctly remember the triangles, squares, rectangles and circles dancing and prancing to the rhythm of my touch—as I turned the end of the kaleidoscope, the various shapes would transform into spectacular configurations of form and color—never dull and always different.

I attempted to share my picturesque treat with my older sister. "Oh, yeah. A kaleidoscope." She looked through it, gave the end a swift twist, rubbed her eyes and handed it back to me. I wondered how everyone couldn't be as delighted and entertained as I was. The little kaleidoscope became a permanent fixture of my face over the next few weeks—that is until my cylindrical companion was ruthlessly crushed under the 250 pound pressure of my dad's foot. Needless to say, the valuable lesson of putting away my toys was definitely reinforced at the tender age of 5.

Years later, I still love looking through a kaleidoscope.

Even more, I love listening to community radio. The ideas, songs, opinions and voices heard on KRCL truly are "A Kaleidoscope of Sound." I invite you to celebrate the spirit of community, diversity and KRCL this Fall during 91FM's on-air fundraiser, Radiothon, October 5-14.

Like my kaleidoscope, not everyone sees—or rather, hears, KRCL the same way. Some value it for what it is, some cherish it for what it's not. You may love the reggae music but not particularly care for the news, or tune in every weekend and skip the mornings. KRCL offers a variety of choices—ranging from Vietnamese to reggae; bluegrass to new age; experimental to blues—with even more in between. The choosing part is left up to you.

This Radiothon, there will be a tangy array of special programming to savor: spend four hours with Neil Young and friends; explore the spoken word of various Beat poets with some Tom Waits

added for flavor; snooze and you'll lose out on early R.E.M. favorites; and last but not least—Radiothon wouldn't be complete without Mr. Baggins and friends movin' and groovin' to five hours of The Grateful Dead. Times, dates, and more specials exclusive to Fall Radiothon can be found elsewhere in your program guide.

Radiothon is a time to kick your heels together and shout to the world "I value commercial-free, community radio KRCL 91FM!" Don't let the heavy weight of our federal government tread on and crumble all that community radio has become. Yes, KRCL's federal grants are shrinking, and the gap in our budget still needs to be replaced with funds from other sources. KRCL is YOU, and we need your financial support to continue the "Kaleidoscope of Sound" that 91FM offers every day.

Pledging your support to KRCL is easy. Of course you'll already be tuned to 91FM during October 5-14, so all you have to do is listen! KRCL's on-air programmers and friends will guide you through the simple steps of becoming a KRCL member: call 359-9191, answer a few questions and...that's it! The call takes only a few minutes and the results will last generations.

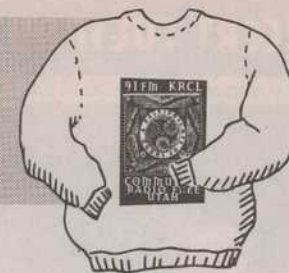
When you become a part of the ever-growing KRCL family, we'll thank you with events such as "Day in the Park," "Utah Jazz and Blues Festival," and 365 days of thought-provoking, invigorating, and entertaining radio. In addition, you can pick up some cool thank-you gifts for pledging at specific levels, such as the spiffy, eye-catching KRCL T-shirt—no KRCL fan's wardrobe is complete without one! Other gifts are also offered, check out your program guide for specifics.

My kaleidoscope may have had a bitter end, but the "Kaleidoscope of Sound" offered on KRCL can and will endure with your help. Celebrate radio freedom **October 5-14** with a pledge of support to YOUR community radio station, KRCL 91FM... never dull and always different. Cheers!

The
patagonia
Outlet
3267 Highland Drive



Contribute at the \$150 level and we'll thank you with a quality, heavy-duty KRCL sweatshirt.



Donate 100 smackers and sit on back and relax in your very own hand-crafted Remington chair.



Let the world know that you support community radio with your KRCL long-sleeved T-shirt.



Fuel up every morning with your handthrown KRCL coffee mug...OR...pick up a short-sleeved KRCL T-shirt.



We'll thank you for your \$25 donation with KRCL's roadmap to the airwaves, "Voices."

359-9191
October 5-14, 1996

KRCL • 208 WEST 800 SOUTH • SLC, UT 84101

After your pledge has been paid, we invite you to stop by the KRCL studios to pick up your thank-you gift. Thanks in advance for calling with a pledge of financial support to KRCL during Fall Radiothon!

R
A
D
I
O
T
H
O
N
G
O
O
D
I
E
S

IN CONCERT TUESDAY, OCTOBER 22 AT 8:00 P.M.



ANI DIFRANCO

**Skyline High School Auditorium
\$15 in advance \$18 at the door**

Available at
A Woman's Place Bookstore (Foothill Dr.)
Raspberry Records (Creekside) and Salt City CDs.



**Authentic Native American
Handcrafted Jewelry and Art**

252 South Main
Salt Lake City

364-2961

**NIZHONI TRADING
COMPANY**



INDIAN HANDMADE JEWELRY,
POTTERY, KACHINAS, MUSIC, ETC.

262-7435

FASHION PLACE MALL
6194 S. STATE, MURRAY, UTAH



Gray Whale CD

CD's under \$10

Salt Lake City,
Ogden, Layton, Logan

583-9626

LETTERS *continued from page 3*

Dear KRCL,

I greet you in the name of Allah! Just a short note to let you know the mail room denied your program guide. They said it had to come from the publisher! I tried to explain to them that you are the publisher. Then they tried to claim it was not sealed properly. I hope that you can meet their demands even though they are ridiculous so that I can receive my guide! If you have to place it in an envelope to mail it, I would be glad to send you a check each month to cover the postage. Your music, such as the Vietnamese and Chinese and

other music from around the world is the only decent music there is to listen to. I pray that you will keep up the good work. Also, if you need anymore artwork of any kind, please feel free to let me know. I'd be happy to donate anything you need! May Allah be with you and guide your path.

Sincerely Yours in Islam,
Ralph Cruchelow

Hi All,

I saw the last issue of the program guide and was truly surprised! I'm very flattered. Thank you!

Sincerely,
Dave Young

Thank You KRCL,

I'm writing this card to you because I owe you an apology for my absence on your "Listener's Choice" program on March 9, 1996. I was unable to show for I had surgery that very day. I went in the hospital just days before. Please accept my apology and donation because you are truly an...inspiration for us all.

Michael N. Snyder

Ray of Dawn
Clothing & Gifts

Experience unique
treasures of the world!

309 So. Main Street
- 359-3632 -

by Tristin Tabish, Development Director

Ani DiFranco (AH-nee diFRANKoh) n.

1. "a folkie who shreds, a punker gone acoustic, a singer/songwriter with bite;" 2. "a whip-smart acoustic warrior who strums with the ferocity of Fugazi and the grace of Joni Mitchell;" 3. "a charismatic powerhouse performer, innovative guitarist, and personally and politically astute songwriter;" 4. "the fiercest folkie;" 5. "one of the boldest alternative artists of the 90's;" 6. "a woman of independent means;" 7. "a punk-folk superhero;" 8. "indie music's subcorporate high priestess." see also: invigorating, articulate, compelling, challenging, intimate, intricate, dynamic, enthralling, energetic, defiant, independent, aggressive, inspirational.

KRCL 91FM and the non-profit Association of Women's Music and Culture (AWMAC) are very proud to present Ani DiFranco at Skyline High School Auditorium on Tuesday, October 22 at 8:00 p.m.

Tagged as the "word-of-mouth phenomenon," Ani DiFranco is an independent success story who has ascended into the musical limelight without the benefits of commercial airplay, music videos, or major-label contracts. Ani's success is well-deserved and definitely didn't happen overnight. Ani began singing and playing guitar before crowds at the age of 9. By 20, she started her own label, "Righteous Babe Records." A true independent, she wants to base her career "in a community, not a corporate system based on greed and amassing fame." Ani not only writes and publishes her own songs, but also produces, creates the artwork and releases her albums herself, rejecting offers of all sizes from major and indie labels alike. Who listens to Ani? Her various albums have been aired on a variety of programs on KRCL—from

KRCL is proud to bring you . . .

... an exciting new daily election year show
exploring the state of democracy in America.

Produced by Pacifica News

Monday through Friday
9 to 10am • May 1 - November 6

Ani DiFranco Hits Salt Lake

"Le Cafe Folk" and "Womanly Ways" to "Static Radio." New and old-school folkies, women, teenagers, punk rockers, men, gay, straight, bi, music fans in their 20's, 30's, 40's, 50's...Ani's audience is about as easy to describe as her intensity. Sometimes gentle, other times furious, Ani's acoustic and electric guitar styles, vocal delivery, profound stage presence and unique songs are, to say the least, a compelling mix. On October 22 she'll be performing her favorite songs from her previous seven recordings, as well as her new Righteous Babe Records, Dilate, which has been charting internationally.

Support independent music and community radio and purchase your Ani ticket today. Your friends, neighbors and family members will be talking about this one for months to come! Tickets are \$15 in advance, \$18 at the door, and are only available at the following independent outlets: A Woman's Place Bookstore (Foothill Dr.), Raspberry Records (Creekside), and Salt City CDs. The hall is wheelchair accessible. See you there!

FOOTHILL
ORIENTAL RUGS

1464 FOOTHILL DRIVE

(801) 582-3500

EXCITEMENT

Thursday
October 10

FALL

CONTINUES!

10:30 p.m.-1:00 a.m.
DEAD CAN DANCE

R
A
D
I
O

T
H
O
N

PeaceCOM

... The brain-child of people like you, who want to contribute to a better world.

The people at PeaceCOM have negotiated with the second-largest long-distance carrier to get competitive rates and the highest contribution to organizations working for a better world. With PeaceCOM your domestic calls are priced at an average of 16 cents per minute flat rate, regardless of where and when you call in the U.S.A. (Most billing rates are mileage-sensitive, and run between 18 and 28 cents per minute.)

Through PeaceCOM, KRCL will receive 9% and Radio For Peace International will receive 3% of ALL domestic billing generated through the program. So you will be saving money on your phone bill and be contributing to the ongoing work of KRCL and RFPI.

There are no monthly fees or start-up costs to you. A calling card will also be issued to you. Participation does not require that you give up any other phone company calling card. The way you dial from your home or business will not change. Absolute satisfaction is guaranteed, and you may leave the program at any time.

All calls are billed in 1/10 minute increments—not rounded up to the next full minute. This means you pay for fewer total minutes of billed time each month.

There are no changes in the way you dial for direct calls, and the quality of the service is excellent. This is a win-win situation for you, KRCL and Radio for Peace International. Please use the enrollment form below.

PeaceCOM Enrollment Form

Yes! This is a great idea. Please enroll me now, I understand that 9% of all my domestic U.S. billings will be donated to KRCL and 3% to RFPI, that I am responsible for the billing I incur, and payment is due upon receipt. I authorize PeaceCOM to change my carrier if necessary to participate in this program.

My current carrier is AT&T MCI Sprint Other _____

NAME _____ BUSINESS PHONE _____

PHONE _____ CO. NAME _____

ADDRESS _____ ADDRESS _____

CITY _____ STATE _____ ZIP _____ CITY _____ STATE _____ ZIP _____

SIGNATURE _____

Send to: PeaceCOM, Attn: KRCL Radio, P.O. Box 5434, Eugene, OR 97405
Or call: 801 363-1818

by Jo Wilson

TP Gallery, at 252 South Main Street in Salt Lake City, sells Native American art and collectibles, and is an underwriter of KRCL's "Living the Circle of Life." Fair-haired and slim, owner David Dunn grew up in Marysvale, Utah where his parents owned a motel and a shop that sold Native American items. He lived for a time in Phoenix, and went on his first solo buying trip in the late sixties. He opened the shop on Main Street in 1974. Since then, he's seen many changes in Salt Lake City, and survived the reconstruction of Main Street in the eighties.

The gallery, on the west side of Main Street, is filled with baskets, sand paintings, rugs, jewelry, pottery and also carries music and books. Music plays as we talk, and David helps the many cus-

tomers who wander into the shop. After showing a Kachina to some interested browsers, David comments, "People are more informed and interested in Native American art and artists than ever before. I carry a lot of things by local artists, and believe in supporting individually versus mass produced articles."

We talk about the diversity of Utah's geography and he comments that he shares KRCL's interest in and support of the outdoors and wilderness, and Native American spirit. Working together, KRCL, its underwriters and audience continue to sustain that spirit within the community. Thanks to David Dunn and TP Gallery for supporting community radio!

bike board blade
BBB
NEW LOCATION!
703 EAST 1700 SOUTH
801 / 561-2626 FAX 561-2666

Mount Olympus
Spring Water
1825 South 3730 West
Salt Lake City

Southern Thunder
Utah's Premier
Award-Winning
Tattoo Studio
819 East 2100 South - Salt Lake - 485-8282
- Custom Tattoos
- Exotic Body Piercing
- Full Line of Jewelry
Health Department licensed and approved

Thursday, October 10
8:00-10:30 p.m.

FALL

Bruce
SPRINGSTEEN

R
A
D
I
O
T
H
O
N

SUNDAY

MONDAY

TUESDAY

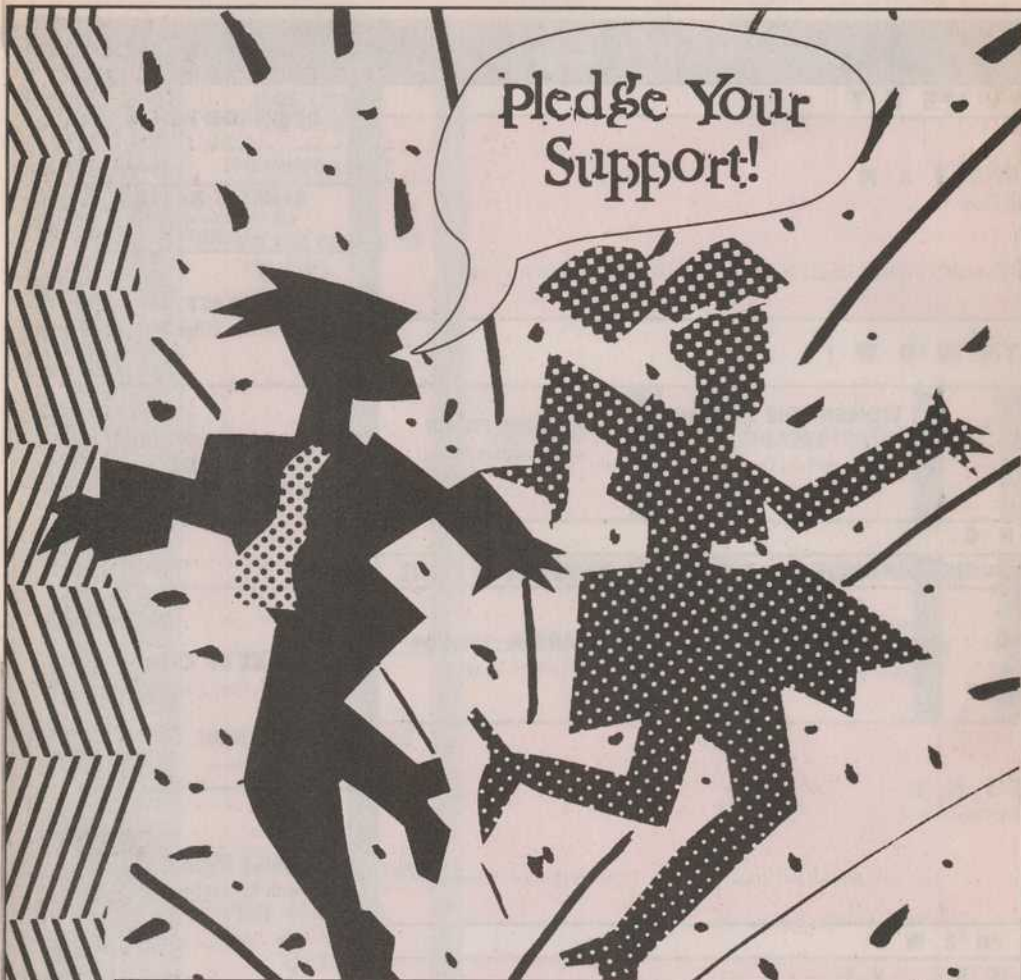
WEDNESDAY

THURSDAY

FRIDAY

SATURDAY

5:30 AM	➤	BLUE LIGHT 'TIL DAWN	MORNING LIGHT						5:30
6:00	➤	MORNING LIGHT	BREAKFAST JAM <i>Acoustic, folk and acoustic rock</i>					ROCKTROSPECTIVE with Toni O.	6:00
7:00	➤	LIVING THE CIRCLE OF LIFE with Max Packineau	with Jodi Stewart and Keith Browning	with Matthew	with Gerry 'Uncle Suz' Runyan	with Susanne	with Gary Timm	SANGEET MALAR with Uma Khandkar & Anjali Deshpande	7:00
8:00	➤		DEMOCRACY NOW!					BREAKFAST JAM with Jo Wilson	8:00
9:00	➤								9:00
10:00	➤								10:00
11:00	➤	SUNDAY SAGEBRUSH SERENADE with alternating hosts Phil Lanouette and Rick Stayner	PRELUDE TO PEACE with Sohrab	WOMANLY WAYS with Tami Fraser	LE CAFE FOLK with Donna	WOMEN: THE SECOND DECADE with Babs De Lay	RHYTHM TRAXX with Jonathan Cloud	SATURDAY SAGEBRUSH SERENADE with John	11:00
12:00	➤		READING						12:00
1:00 PM	➤		ARTSPEAK	PEOPLE'S BUSINESS	CONCERNING GAYS & LESBIANS	LUNCH ENCOUNTER	LA VOZ DE LA GENTE		1:00
2:00	➤		GLOBAL GUMBO with Steve Seftel	GLOBAL GUMBO with Nancy Fillat or Craig Miller	GLOBAL GUMBO with Alana	GLOBAL GUMBO with Chiedu	SOULFUL SOUNDS with Ebay	WAKE UP CALL with Dave Sieger	2:00
3:00	➤	BLUEGRASS EXPRESS with 'The Old Man'	DRIVE TIME <i>Rock, blues, folk, soul, world beat, and more</i>						3:00
4:00	➤		with Randy B.	with Steve	with Mike	with Bill Boyd	with Lance Drummond	SMILE JAMAICA with Robert Nelson	4:00
5:00	➤	RIDERS RADIO THEATER	PACIFICA NEWS						5:00
6:00	➤	FRET N' FIDDLE with Mark Cantor or Mike Evans	SOUND TRACK '91						6:00
7:00	➤	NEW DIMENSIONS	ASIAN CHIMES: SONANCE OF KOREA	ASIAN CHIMES: VOICE OF POLYNESIA	ASIAN CHIMES: CHINESE RADIO	ASIAN CHIMES: VOICE OF VIETNAMESE	MUSIC FOR YOUR EARS with Tony Hodges	LISTENER'S CHOICE	7:00
8:00	➤								8:00
9:00	➤	NEXUS with Riversong	RED, WHITE AND BLUES with JR Rokich	RADIO BEMBA with Coqui	SLICK ROCK REGGAE with Jeff Salt	AURAL DECAY with Dave S.	S.O.A.P. with Sam Smith or Nilsa		9:00
10:00	➤							STATIC RADIO with Bernice and Tristin	10:00
11:00	➤	VARIABLES with Scott Howard	CROSSROADS with Ziggy	NOCHE CASUAL with Monica	NITE ROOTS with Papa Pilgrim	SEREMOUS ROPES with Richard	RAPP ATTACK with DJ Buzz		11:00
12:00	➤							SHORT TERM EFFECTS with Dylan	12:00
1:00 AM	➤	CRANIAL CIRCUITRY with Alan Moss	TOTAL HARMONIC DISTORTION with Alan	MUSIC	RED EYE RADIO with Tim	DYER'S EVE with Dave Dyer	TO HELL AND BACK with Les Nilsson	AFTER HOURS with Cindy Davis	1:00
2:00	➤								2:00
3:00	➤	ABSOLUTE ELSEWHERE with Brian	IN EXTREMIS with Brian	RANDOM ACCESS with Doug Young	CORNUCOPIA with Debra and Sarah	ILLUSTRATED BLUES with Jolene	ROCKTROSPECTIVE with Toni O.	BLUE LIGHT 'TIL DAWN with Mickey	3:00
4:00	➤								4:00
5:00	➤								5:00



**HELP US KICK-OFF
FALL RADIOTHON
ON SATURDAY, OCTOBER 5 WITH...**

- 8:00 -10:00 A.M. ROBERT EARL KEENE**
- 10:00 - 1:00 P.M. PROTEST MUSIC II**
- 1:00 - 4:00 P.M. H.O.R.D.E. JAM BANDS**
- 4:00 - 7:00 P.M. REGGAE, REGGAE, REGGAE!**
- 7:00 - 9:00 P.M. GIRRRLS ROCK**

PLEDGE YOUR SUPPORT

By Donna Land Maldonado

JUST TWO THINGS:

- Pledge BIG and often..... according to your definition of BIG.
- Pat yourself on the back for being a listener to the radio station who had Chairperson of the National Endowment for the Arts, Jane Alexander, in the studio for an interview. She was able to see first-hand how Community Radio works, egg cartons and all. Thanks to the ArtSpeak people/volunteers who managed to finagle Ms. Alexander's schedule to fit KRCL into a very busy two day line-up.

As Ever, Donna

**October is...
AIDS Awareness Month**

**Listen to KRCL 91FM
for information, music
and spoken word
about AIDS and its
prevention.**



Brought to you by
Bakers C&C
doing business
THE COWBOY WAY!



Handmade Banjos
Gibson ♦ Deering Banjos
Gibson ♦ Flatiron Mandolins
Martin ♦ Gibson ♦ Guild ♦
Ramirez Guitars
New ♦ Used ♦ Vintage

**Intermountain
Guitar & Banjo**
712 East 100 South ♦ Salt Lake City
322-4682

Factory Authorized Repairs for
Martin ♦ Gibson ♦ Ovation ♦ Flatiron ♦ Guild

CATALYST

Utah's Progressive Monthly Magazine

- IS
- Community
 - Environment
 - Health
 - Politics
 - Art
- Food for the soul

READ IT!

**COSMIC
AEROPLANE
COSMIC
AEROPLANE
COSMIC
AEROPLANE**

1300 SOUTH 900 EAST
487-9505

HOURS: M-F 11-7; SA 10-6; SU 12-5



The Preferred Pie
Delivered FREE

Sugarhouse
1624 South 1100 East
486-3748
♦ ♦ ♦

Try our Sourdough
Super Subs and zesty
Lasagna!

Choose from over 30
delicious toppings!

Deluxe Salads
Famous Garlic Rolls
Cold Sodas

Mention KRCL
and receive 1
dozen famous
Garlic Rolls
with any Large Pizza Order.
(not valid with other discounts)



Public Affairs

Morning Light

SUNDAYS 6:30AM Latino USA

The Radio Journal of news and culture for the Latin population in English.

MONDAYS 5:30AM This Way Out

A news magazine regarding gays and lesbians.

TUESDAYS 5:30AM Common Ground

A look at, and discussion of, global affairs produced by the Stanley Foundation.

WEDNESDAYS 5:30AM Sound Print

Stories of the world.

THURSDAYS 5:30AM CounterSpin

produced by FAIR, Fairness & Accuracy In Reporting, the national media watch group based in New York. Hosted by Laura Flanders and Martin A. Lee.

FRIDAYS 5:30 AM High Plains News or National Native News

Special Programming

WEEKDAYS 9:00AM Democracy Now!

A national elections special "of the people, by the people and for the people." Produced by Pacifica.

Riders Radio Theater

SUNDAY 5:00PM

New age cowpoke humor, zaniness and cowboy music by Riders in the Sky.

New Dimensions

SUNDAY 7:00 PM

A timeless and relevant interview series well suited for the "inner directed" audience. Hosted by Michael and/or Justine Toms.

SEPTEMBER 1 "More Than Skin Deep,"

with Sara Halprin, who takes a courageous but personal and comprehensive look at our current images of female beauty and the underrated power of ugliness. #2528

SEPTEMBER 8 "Leading The Mythic Life," with Jean Houston. Hear a cogent overview of how our old stories shaped our past, and what will replace them. #2560

SEPTEMBER 15 "Politics is Personal," with John Vasconcellos, a thirty-year veteran of electoral politics known for his humanistic approach describes how we can and must replace the usual politics of cynicism and negativity with a politics of faith and trust. #2569

SEPTEMBER 22 "Eco-Politics: The Natural Way," with Karl-Henrik Robert, who brought together major decision-makers of science, business and government in a consensus effort to deal with the ultimate sustainability of life on Earth. #2498

SEPTEMBER 29 "Healing Naturally Through Ayurveda," with Maya Tiwari, who explains basic Ayurveda teaching and how it can help us access our innate storehouse of healing wisdom. #2525

OCTOBER 6 **RADIOTHON SPECIAL.** Your opportunity to financially support a program you find valuable.

Reading

WEEKDAYS 12:00 PM

Short stories, novels and/or essays read by a variety of readers from a variety of different sources.

ArtSpeak (Formerly Our Arts)

MONDAYS 12:30 PM

Interviews with local or visiting artists. Produced by alternating host: Brian Crockett, Kim Duffin, Guy Lebeda, Amanda Pahnke, Betsy

Quintana, and Marilyn Scharine.

SEPTEMBER 2 Utah's Crossroads: Guy Lebeda talks with the newest Utah anthology, CROSSROADS. Guy will feature selected readings from the book.

SEPTEMBER 9 Amanda previews the new season of the dance world in Salt Lake City.

SEPTEMBER 16 Brian talks with Jim Swensen about this year's selection for the Greek Theatre, Euripede's "Orestes."

SEPTEMBER 23 Marilyn goes backstage at the Opera, looking at the 96-97 season.

SEPTEMBER 30 Brian talks with Steve Olsen, President Elect of the Western Museum Association.

OCTOBER 7 "Censored!" Radiothon expose. A one hour special starting at high noon, banned books and all.

OCTOBER 14 Radiothon special: Beat Poets and Tom Waits, (12-2pm).



THE
Salt Lake
Roasting
Co. & Cafe
320 East 400 South Salt Lake City



Tune in the "Mighty 91" for...
THE
Blue Devils
Blues Revue
- THE FEATURE EDITION -
BROADCAST LIVE
9:30-11 p.m. on KRCL
from the **9020** **5200**

OCTOBER 21 Winners of the Utah Arts Council's Original Writing Competition reading their award winning poems, short stories and essays. (An hour long feature starting at noon.)

OCTOBER 28 Betsy interviews arts specialist Elaine Harding about Lincoln Elementary's Arts Education program.

People's Business

TUESDAYS 12:30PM

Discussions on community and social concerns.

SEPTEMBER 3 Host, Lynne McCue Hamilton, discusses Planned Parenthood with Carrie Galloway, Executive Director.

SEPTEMBER 10 Robyn Simper finds guests and topics that concern peace and humanity.



ACOUSTIC
MUSIC
Come on!
We have three
rooms full of
guitars!
857 E. 400 S. • 531-7066



EXPERIENCED
BOOKS
recycled reading



A New Place!
2150 S. Highland Dr.
Salt Lake City, UT 84105
467-0258

SEPTEMBER 17 MORMON WOMEN'S FORUM: "Legacy" and other female images on Temple Square: How are Mormon women presented to outsiders? Laraine Wilkins and Mary Randak.

SEPTEMBER 24 Igninia Boccalandro focuses on naturally healthy lifestyles.

OCTOBER 1 A dialogue on AIDS Awareness Month (October) with Lynne McCue Hamilton.

OCTOBER 8 Radiothon: KRCL's "Stephen Holbrook Awards."

OCTOBER 15 MORMON WOMEN'S FORUM: A Feminist Critique of LDS General Conference...are women being valued?

OCTOBER 22 Healthy lifestyles with Igninia Boccalandro.

OCTOBER 29 Robyn Simper hosts.

Concerning Gays and Lesbians

WEDNESDAYS 12:30PM

News and information from Utah's gay and lesbian population, with Becky and/or Jeff.

OCTOBER 9 There will be a Concerning Gays and Lesbian special at 12 noon-1pm to celebrate Fall Radiothon.

Lunch Encounter

THURSDAYS 12:30PM

SEPTEMBER 5 MUSEUM NOTES

An exploration of the natural world and its inhabitants, with host Betsy Price.

SEPTEMBER 12 **UTAH SOCIAL ISSUES** With host: Susan Weisenberg.

SEPTEMBER 19 **SENIOR SOUND OFF** Host David Turner, Division of Aging Services, talks with and about the older population.

SEPTEMBER 26 MUSEUM NOTES

An exploration of our environmen-

tal world, with host Ann Hanniball.

OCTOBER 3 **MUSEUM NOTES** with Betsy Price.

Oct 10: **UTAH SOCIAL ISSUES** with Susan Weisenberg.

OCTOBER 17 **SENIOR SOUND OFF** with David Turner.

OCTOBER 24 **MUSEUM NOTES** with Ann Hanniball.

OCTOBER 31 "The Day of the Dead"

La Voz de la Gente

FRIDAYS 12:30PM

Guests talk with Rebecca Chavez-Houck, Teresa Martinez or Greg Marcial about the topics of advocacy, service, information, political and cultural concerns of and about Utah's Hispanic population.

Pacifica News

WEEKDAYS 6:00PM

National and international news from an alternative point of view. Produced by the National Pacifica News Department.

Sound Track '91

MONDAYS 6:30PM: **Tell It On the Mountain**

TUESDAYS 6:30PM: **The Evolving Male** Host Matt Wilson.

WEDNESDAYS 6:30PM:

In The Opinion Of...

A local production on issues of today from a local perspective, with Mark Hampton and/or Ann Floor.

THURSDAYS 6:30PM: **Making Contact**

Not about conventional wisdom—but, rather to serve democratic communication. Produced by National Radio Project.

FRIDAYS 6:30PM: **Latino USA**

The Radio Journal of news and culture for the Latin population in English.

Short Features

MONDAYS 7:30AM: **Arboretum Report**

MONDAYS 5:00PM: **Southern Utah Wilderness Alliance Update**

TUESDAYS 11:30AM: **Because We're Here**

TUESDAYS 5:00PM: **Environmental Update**

WEDNESDAYS 10:30AM: **Letters To The Editor**

WEDNESDAYS 12:55PM: **Because We're Here**

THURSDAYS 10:30AM: **Rape Crisis Report**

SUNDAYS 9:57AM: **Environmental Update**

DAILY 7:00AM AND 3:00PM: **Earth and Sky**

DAILY 5:30 AND 10:00PM: **Stardate**

WEEKDAYS 6:28PM: **Letters to the Editor**

**Alternative/Punk Rock**

THURSDAYS 10:30 PM **Seremous Ropes**
Alternative rock—R.E.M., The Smiths, Prefab Sprout—with host Richard.

SATURDAYS 9:00 PM **Static Radio**
Halo Benders, Rites of Spring, Bikini Kill, Eric's Trip, Pavement and other delights. Bern and Tris host the weekly party in your speakers.

Industrial/Gothic/Experimental

MONDAYS 3 AM **Absolute Elsewhere**
Avante-pop. Dark ambience, and things of uncommon nonsense. Hosted by Brian.

MONDAYS 1 AM **Cranial Circuitry**
Progress into the future with Electronic Body Music to Industrial. Hosted by Alan Moss.

TUESDAYS 1 AM **Total Harmonic Distortion**
From Neubauten to Clock DVA, this is hard, angst-ridden, disturbing industrial. Hosted by cyber punk Alan.

TUESDAYS 3 AM **In Extremis**
Post-industrial sound scrapes from the edge of the abyss. With host Brian.

SUNDAYS 12:00 AM **Short Term Effects**
Mostly dark music, from the Sisters of Mercy to Siouxsie and the Banshees, and Sol Invictus to Nick Cave. With host Dylan.

Blues/R&B

MONDAYS 8 PM
Red, White, and Blues
Explore the wide variety of this distinctively American musical form, with a smattering of its offspring. J.R. Rokich hosts.

MONDAYS 9:30 PM **KRCL Presents Live Blues Broadcasts**
Last Monday of each month at the Dead Goat Saloon.

MONDAYS 10:30 PM **Crossroads**
A variety of American and British Blues, both traditional and modern. Tune in for the best of Delta, Chicago, Texas and west coast yesterdays and today's blues artists. With host Ziggy.

WEDNESDAYS 3:00 PM **Drive Time**
Rock, blues, folk, reggae, and more with host Mike.

THURSDAYS 10 AM **Women: The Second Decade**
Babs De Lay shares the accomplishments of women from the 1920's to the 1990's.

FRIDAYS 3:30 AM **Illustrated Blues**
Paint a picture in your mind...from the hard-hitting to the melancholy. Hosted by Jolene.

Ethnic/World

SUNDAYS 7 AM **Living the Circle of Life**
Native American music, news and information with host Max Packineau. National Native News airs at 8:30 am.

MONDAYS 1 PM **Global Gumbo**
An entertaining as well as educational experience from Afro-beat—Zouk, including the 3 R's: rumba, rapso, and rara. With your host Steven Seftel.

MONDAYS 7 PM **Asian Chimes**
Sonance of Korea. Hosted by Esther Sun

TUESDAYS 1 PM **Global Gumbo**
Music from around the globe. Hosted by Nancy Fillat or Craig Miller.

TUESDAYS 7 PM **Asian Chimes: Voice of Polynesia**
Music from Samoa, Tonga, Tahiti, and Hawaii with alternating hosts—Ellen Selu, Joel Uluakiola, and Danny Tapeta.



Fresh Pastas
Vegetarian Specialties
Meat Dishes
Espresso Drinks
Delightful Deserts
Live Music on weekends

Hours

Monday - Thursday • 11:00 a.m. - 9:00 p.m.
Friday - Saturday • 11:00 a.m. - 10:00 p.m.
Sunday • 5:00 a.m. - 9:00 p.m.

500 South 60 West • Salt Lake City, Utah
(801) 364-4914

TUESDAYS 8:00 PM **Radio Bemba**
Music from Central and South America and the Caribbean featuring Salsa, Merengue, Cumbia, and more with host Coqui.

TUESDAYS 10:30 PM **NOCHE CASUAL**
Latin music from around the world, with host Monica.

WEDNESDAYS 1 PM **Global Gumbo**
Auditory Geography—with no tests. Brought to you from the musical corners of the round earth by Alana.

THURSDAYS 1 PM **Global Gumbo**
Musical jaunts around the globe, set to break all barriers. Hosted by Chiedu.

THURSDAYS 7 PM **Asian Chimes: Voice of Vietnamese**
With hosts Thao and Thu.

SATURDAYS 7 AM **Sangeet Malar**
From the subcontinent with hosts Uma Khandkar, Anjali Deshpande, and Ganesh Raiker.

Folk/Bluegrass

SUNDAYS 10 AM **Sagebrush Serenade**
Music to ease you from your morning cup through your Sunday afternoon. Folk and rock with a country flavor with alternating hosts Phil Lanouette and Rick Stayner.

SUNDAYS 2 PM **BLUEGRASS EXPRESS**
Join "The Old Man" for the best in bluegrass; music at the root of country and folk tunes popular today.

SUNDAYS 5:30 PM **Fret 'N' Fiddle**
Celtic and American traditional music on alternating programs. From the immigrant ships...to the campfires of the 1840's...to the honky tonks of the 1940's and beyond. Hosts Mike Evans and Mark Cantor alternate Sundays.

MON-FRI 6 AM **Breakfast Jam**
A savory blend of acoustic, folk-rock, and bluegrass tunes stirred up with various hosts. A pleasant start to your day.

TUESDAYS 10 AM **Womanly Ways**
Tami Fraser or Cissy McAndrew present a variety of music by women. Rock, jazz, soul, folk, country, all by women.

TUESDAYS 3:00 PM **Drive Time**
Join Steve for mostly "urban folk," but don't be surprised to hear some blues, zydeco, or worldbeat.

WEDNESDAYS 10 AM **Le Cafe Folk**
Contemporary folk music with a touch of tradition and world. Hosted by Donna.

THURSDAYS 3:30 PM **Cornucopia**
An eclectic blend of music styles with an emphasis on folk, acoustic and women's music. Debra and Sarah host.

Metal/Hardcore

FRIDAYS 1 AM **Dyer's Eve**
Host Dave Dyer offers a variety of thrash and speed metal.

SATURDAY 1 AM **To Hell and Back**
A splattering of thrash, speed, industrial grindcore, and death metal. Your parents will hate it. Hosted by Les Nilsson.

New Age/Electronic

SUNDAYS 8 PM **Nexus**
Powerful, peaceful, pilgrimage. Music that takes you on a journey, from aboriginal ancestors to future dreamsongs, discovering our connection with all things. Host Riversong.

SUNDAYS 10:30 PM **Variables**
Electronic, new age and contemporary jazz with your host Scott Howard.

MONDAYS 10 AM **Prelude to Peace**
Contemporary space music, electronic, cross cultural, environmental, and contemplative recordings by musicians from around the world. Hosted by Sohrab.

National Public Affairs Programs on KRCL

For further information, copies, transcripts, etc. please contact the producers directly.

New Dimensions

PO Box 410510
San Francisco, CA 94141
415-563-8899

Counterspin

Fairness and Accuracy in Reporting (FAIR)
1-800-847-3993

Pacifica Radio Archives

3729 Cahuenga Blvd West
North Hollywood, CA 91604
818-506-1077
pacifica@peacenet.org

National Native News

810 East 9th Ave
Anchorage, AK
907-277-2776

WINGS

PO Box 33220
Austin, TX 78764
512-416-9000

Latino USA

PO Box 7789
U of TX at Austin
Austin, TX 78713-7789
1-800-535-5533
lusa@www.as.utexas.edu

High Plains News Service

104 North Broadway, Suite 412
Billings, MT 59101
1-800-729-3540

This Way Out

P.O. Box 38327
Los Angeles, CA 90038
213-874-0874

Stardate

stardate@astro.as.utexas.edu

Earth and Sky

people@earthsky.com

Reggae**WEDNESDAYS 8 PM Slick Rock Reggae**

Selector Jeff Salt comes in with all styles of reggae mixed in a way you're not likely to hear elsewhere.

WEDNESDAYS 10:30 PM Nite Roots

Reggae, reggae, reggae with Papa Pilgrim. Listen for "Reggae Runnings"—upcoming reggae events.

SATURDAYS 4 PM Smile Jamaica

The tradition continues: from Spongi Reggae to deep dish Dub. Host Robert Nelson serves up strictly roots.

Rock**THURSDAYS 1:00 AM Red Eye Radio**

Hosted by Tim.

WEDNESDAYS 3:30 AM Random Access

Folk, rock, some R&B, with a sprinkling of world, bluegrass, jazz and the blues thrown in to spice the mix. Host Doug Young.

THURSDAYS 3:00 PM Drive Time

An aesthetically precise selection of rock, folk and related music. We do try to be lively. Hosted by Bill Boyd.

THURSDAYS 8 PM Aural Decay

A diverse mix from rock to reggae. You want covers? We got 'em. If they don't fit, we'll take 'em in a little. Hosted by Dave S.

SATURDAYS 4:00 AM Rocktrospective

Traditional rock 'n' roll, rhythm and blues, new and homegrown music, and always listener's requests! The Rocktrospective calendar features a historical vision of the pat with an ear to the future. Hosted by Tony O.

SATURDAYS 10 AM Sagebrush Serenade

A musical history lesson without the lecture.

SATURDAYS 1 PM Wake Up Call

With host Dave Sieger.

Soul/Rap/Urban**MONDAYS 3:00 PM Drive Time**

100% fattening rhythm and groove with chef Randy B. Crossover cuisine served with a refined sauce of jazz, funk, reggae, R&B, latin, blues and whipped cream.

FRIDAYS 7:00 PM Music for Your Ears

The jazzy side of soul.

FRIDAYS 10 AM Rhythm Traxx

A collection of soul and jazz with occasional rap. A twist of oldies and dusties will lighten the mood. Hosted by Jonathan Cloud.

FRIDAYS 1 PM Soulful Sounds

Soul, rap, '70's to '90's. Host Ebay.

FRIDAYS 3:00 PM Drive Time

Lance Drummond brings you rhythm and blues, old rock 'n' roll.

FRIDAYS 8:30 PM S.O.A.P.

Sounds of a party. Sam Smith and Nilsa Feliciano keep you up to date with the rest of the world.

FRIDAYS 10:30 PM Rapp Attack

Hardcore rap with host DJ Buzz.

SUNDAYS 2:00 AM After Hours

It's all about the music. Catch the vibe!

Women's Programming**TUESDAYS 10 AM Womanly Ways**

Tami Fraser presents a variety of music by women. Rock, jazz, soul, folk, country. Women's news and information included.

THURSDAYS 10 AM Women: The Second Decade

Babs De Lay shares the accomplishments of women from the 1920's to the 1990's. Women's News, Rape Crisis Report, and specials on women in history.

SALT CITY CD'S
THE MUSIC EXPERIENCE

CD'S VINYL POSTERS
& MORE
Gift Certificates

878 E. 900 S. SLC UT
596-9300

Protect Your Radio Freedom

ArtSpeak presents

CENSORED!

a Radiothon special on banned books Monday, October 7, 12 noon-1:00 p.m.

KRCL'S MISSION STATEMENT

"The unique mission of public broadcasting is to meet the entertainment and information need that either cannot or will not be undertaken by commercial broadcasters. It seeks excellence in its programming, not mediocrity; diversity rather than conformity; innovation instead of repetition; creativity rather than mimicry. While it has remained available and responsive to all groups and interests, it has not been required through commercial or financial interests, to be obligated to any."

KRCL informs, engages, enlightens and delights. It makes a positive difference in the lives of people along the Wasatch Front. As a listener supported community radio station, KRCL bases programming decisions on the area's listening needs and encourages listener participation in all activities.

KRCL belongs to the people of the Wasatch Front, but KRCL will offer locally produced programs to areas outside the Intermountain West, to introduce our vision to a wider audience. To meet diverse needs, wants, and hopes, the station's Board of Trustees and staff are committed to providing high quality local programming through:

Assessibility: KRCL is especially committed to populations traditionally denied media access. Racial minorities, women, and persons interested in broadcasting but lacking professional skills are encouraged to participate.

Education: Current events and public affairs should be covered in greater depth than is possible in commercial media, encouraging dialogue among differing points of view. Not shying away from conflict or confrontation, KRCL emphasizes issues affecting low-income people.

Diversity: A wide variety of musical and cultural information programs are pursued, with emphasis on live broadcasts with their unpredictable yet spontaneous appeal. Diversity means drawing new audiences into a wide array of programs and exposing people to alternative lifestyles and points of view.

Bridging: KRCL covers events and public issues in a way that "bridges" Utah's predominant culture with ideas and expressions not given air time elsewhere. Voicing positive community concerns, KRCL hopes to bring people together.

Programming Quality: While serving as an alternative to the commercial media and utilizing untrained newcomers, KRCL strives to achieve program quality that attracts listeners.

Localism: Emphasis is on topics significant to the Wasatch Front community; e.g. Utah's pluralistic culture, the uniqueness of Utah's environment, and the creative artistic expression of its people.

THE KRCL PROGRAM GUIDE

is published bi-monthly by Listeners' Community Radio of Utah, Inc. a non-profit organization. Unsolicited submissions are welcome but cannot be returned. The editor reserves the right to edit any manuscripts to conform to standards in accordance with KRCL policy. All letters, manuscripts, photos or artwork should be sent attention: Managing Editor, Tristin Tabish, KRCL Program Guide, 208 W. 800 South, Salt Lake City, UT, 84101. Opinions expressed are not necessarily those of KRCL's volunteers, staff or Board of Trustees.

Our Address: KRCL, 208 West 800 South, Salt Lake City, Utah 84101. Our office phone is (801) 363-1818, studio line (801) 359-9191. Our e-mail address is mailman@krcl.org

KRCL is a 16,500 watt listener-sponsored community radio station broadcasting to over 1.4 million people. **KRCL** can be found on the dial at 90.9 FM, on 96.5 in Park City, and on **KZMU** at 89.7 FM in Moab, Utah.

Gardiner
DISTRIBUTING

WHOLESALE
FRESH PRODUCE
801-364-7277
554 West 1st South
Salt Lake City, Utah 84101

THE
Sun

A PRIVATE CLUB FOR ITS MEMBERS
Open Daily At Noon
702 West 200 South • 531-0833
Salt Lake City, Utah 84104

Celebrate Radio Freedom

Saturday, October 12

FIVE
GROOVIN'
HOURS
OF

THE GRATEFUL DEAD

Join Mr. Baggins, Otis, Dat Boy Jack and friends from 7:00 p.m.-12 midnight

A KALEIDOSCOPE OF SOUND *support* Utah's Community Radio

NAME

ADDRESS

CITY

STATE

ZIP

TELEPHONE

All members receive an annual subscription to the program guide, "Voices," plus the following at each level:

- | | |
|--|---|
| <input type="checkbox"/> \$150 Radio Raptor
Heavy duty KRCL sweatshirt
<input type="checkbox"/> M <input type="checkbox"/> L <input type="checkbox"/> XL <input type="checkbox"/> XXL | <input type="checkbox"/> \$40 Contributing Cricket
KRCL handthrown mug,
or KRCL short sleeve T-shirt
<input type="checkbox"/> M <input type="checkbox"/> L <input type="checkbox"/> XL <input type="checkbox"/> XXL |
| <input type="checkbox"/> \$100 Generous Jack Rabbit
Low-rider chair with the
KRCL logo | <input type="checkbox"/> \$25 Supporting Seagull
Bi-monthly subscription to Voices. |
| <input type="checkbox"/> \$65 Beneficial Brineshrimp
KRCL long-sleeved T-shirt
<input type="checkbox"/> L <input type="checkbox"/> XL <input type="checkbox"/> XXL | |

Mail this form to:

KRCL, 208 West, 800 South, Salt Lake City, UT 84101

All donations are tax-deductible in accordance with the law.

THANK YOU!

Support These Underwriters

- | | | |
|--|---|--|
| Acoustic Music
857 East 400 South | Graywhale CD
Salt Lake City, Ogden, Provo, Logan | Salt Lake Pizza & Pasta
1063 East 2100 South |
| Baker's C&C, Inc.
367 West Paxton (1170 S.) | Hispanic Yellow Pages
943-5295 | Salt Lake Roasting Co.
320 East 400 South |
| Bike Board Blade
703 East 1700 South | Intermountain Guitar and Banjo
712 East 100 South | Southern Thunder Tadoo Co.
819 East 2100 South |
| Bradley Screenprint
567-1996
1-800-656-1991 | Intermountain Litho Printing
4030 South 500 West | Space Agency Concerts and
Theatricals
355-2200 |
| Cafe Mediterranean
60 West 500 South | Mt. Olympus Waters, Inc.
1825 South 3730 West | Sunrise Press
252 West 1300 South |
| Café Molise
55 West 100 South | Nizhoni Trading Company
Located in the NE corner of
Fashion Place Mall | The Sun
A private club for its members
702 West 200 South |
| Catalyst
362 E. Broadway | Overnight Graphics
533-0435 | T P Gallery
252 South Main |
| Corporation for Public
Broadcasting
Washington, D.C. | The Park Cafe
604 East 1300 South | United Concerts
536-1234 |
| Cosmic Aeroplane
1300 South 900 East | Patagonia Outlet
3267 Highland Drive | Utah Museum of Natural
History
University of Utah |
| Cream O'Weber
Look in your local grocery store | Phillips Gallery
444 East 200 South | Wasatch Touring
702 East 1300 South |
| Dan's Foods
Salt Lake City | Private Eye Weekly
Distributed along the Wasatch | Wave Products
125 West 2100 South |
| Downtown Storage
29 West 800 South | Ray of Dawn
309 South Main Street | Wizards and Dreams
1057 East 2100 South |
| The Event Magazine
Distributed Along the Wasatch | Salt City CD's
878 East 900 South | Zephyr Club
A private club for its members
301 S. West Temple |
| Gardiner Distributing
554 West 100 South | Salt Lake Art Center
328-4201 | |



THE COVER DESIGN takes elements from a "kaleidoscope of cultures"—symbolizing KRCL and its long-standing tradition of playing music from cultures around the globe. The border of the design was inspired by a sequined Haitian flag. The small circle in the upper left corner is a symbol for the *Sun* in many cultures. The circle in the upper right is one of the oldest ideograms and has often appeared in Buddhist art as symbolizing charisma. The circle in the lower right is another ancient ideogram that has symbolized the *moon* or the *female* in Middle Eastern art. The circle in the lower left is a modern day symbol used in map making to indicate a *center from which energy and/or communication emanates*.

The large circle in the center was used in Japanese Samurai heraldry to symbolize the *universe*. The small circle directly in the center has been found from early Nordic rock carvings to cliff paintings in the Sahara. In Ghana it is used on clothing and means the *highest* or the *best*. Cover art courtesy of Slanting Rain Graphic Design, Logan, Utah, U.S.A.



KRCL 91FM

208 West 800 South
Salt Lake City, Utah 84101

NON-PROFIT
ORGANIZATION
U.S. POSTAGE
PAID
SALT LAKE CITY, UTAH
PERMIT NO. 3973

Please notify us of any change of name or address. The post office will not forward the Program Guide.



October 14th
**FROM OUT OF
THE WASATCH**

**COMES A
JAM-PACKED**

Monday

- 3:00 a.m. - 5:30 a.m. The Residents
6:00 a.m. - 9:00 a.m. Greg Brown & Christine Lavin
9:00 a.m. - 12 noon Ani DiFranco, Tori Amos & Liz Phair
12 noon - 2:00 p.m. Beat Poetry & Tom Waits
2:00 p.m. - 4:00 p.m. R.E.M. (early favorites)
4:00 p.m. - 8:00 p.m. Neil Young
8:00 p.m. - 10:30 p.m. Stevie Ray Vaughan

THE SWAN SONG TO RADIOTHON...TUNE IN FOR THE FESTIVITIES!