



VOICES

JULY/AUGUST 1997 ♦ FREE

KRCL 91FM PROGRAM GUIDE



Amelia Earhart Mina Loy Kay Boyle Gloria Steinham
Karen Shepherd Taylor Caldwell Georgia O'Keefe
Christa McCulliff Hilda Doolittle Nancy Cunard Mothe
Charlotte Perkins Gilman Geraldine Farraro Gertrude S
Hillary Rodham Clinton Eleanor Roosevelt Maya Angel
Joan of Arc Martha Graham Coretta King Lani Guini
lie B. Strate Marishka Bertothy Many Queen of Scotla
Margaret Anderson Djuna Barnes Natalie Narney Sylvi
Burkholder Libby Beamen Alice B. Toklas Mother Tl
ryher (Winifred Ellerman) Colette Sacajawea Solita S
met Flanner Jane Heap Maria Jolas Anais Nin Jean R
Renee Viven Edith Wharton Virginia Wolf Alice Eastw
Terry Tempest Williams Isak Dinesen Rachel Carson

Women Aloud

August 2-3, 1997

KRCL 91 fm

a radio celebration

Volunteers: Cindy Aperges-Davis, Mickey Applebaum, Misi Auva'a, Rob Baker, Mike Beck, Dan Benaducci, Carolyn Benallyson, Marie Blackwood, Randy Block, Iginia Boccalandro, Chuck Bradley, Deena Brazy, Keith Browning, Earl Burnett, Ken Burrola, Mark Cantor, Rebecca Chavez-Houck, Alan Chow, Steve Connor, Brian Crockett, Babs De Lay, Pat Dell, Anjali Deshpande, Thao Doan, Paul Dowler, Lance Drummond, Gena Edvalson, Jim Elder, Mike Evans, Yan Fang-Magnusson, Nancy Fillat, Ellen Fisher, Doc Floor, Ann Floor, John Florence, Kevin Florendo, Tami Fraser, Jeff Freedman, Barb Guy, Bernice Halladay, Ebay Hamilton, Ann Hanniball, Mark Hampton, Brian Hansen, Doug Harding, Tanya Hawkins, Dung Hoang, Marc Hoenig, Tony Hodges, Scott Howard, Ziggy Jedrzeczyk, Tom Johnson, James Jun, Glenn Keister, Brian Kelm, Uma Khandkar, Susan Kies, Phil Lanouette, Guy Lebeda, Dylan Mace, Roberto MacFarland, Sohrab Mafi, Greg Marcial, Teresa Martinez, Lynn McCue-Hamilton, Laura Martin, Dean Mednick, Chiedu Megwala, Craig Miller, Susanne Millsaps, Maureen Mooney, Richard Moore, Alan Moss, Becky Moss, Tom Moss, Marian Nash, Robert Nelson, Les Nilsson, Tony Onofrietti, Max Packineau, Giovanna Percantino, Adele Pincock, Karen Pinell, Tony Polychronis, Betsy Price, Betsy Quintana, Bill Ramsay, Linda Reeder, Lou Reitz, Inma Recio, Chris Rohrer, John Rokich, Gerry Runyan, Jeff Salt, Dave Santivasi, Marilyn Scharine, Richard Scharine, Jerry Schmidt, Steve Seftel, Dave Seiger, Ellen Selu, Raye Silvers, Amanda Simmons, Myron "Buzz" Simon, Robyn Simper, Sam Smith, Rick Stayner, Jodi Stewart-Browning, Tim Stewart, Ken Sullivan, Danny Tupua, Gary Timm, David Turner, Margaret Toscano, Joel Uluakiola, Tito Valdez, Mark Vaughn, Elizabeth Visick, Matthew Wallace, Susan Weisenberg, Jolene Whitaker, Laraine Wilkens, Jo Wilson, Matt Wilson, Leslie Wold, Truman Wold, Doug Young.

BROWN BAG

concert series

Free Concerts in the City

June 2 - August 22

Monday through Friday

Beginning at 12:15 p.m.

[TWENTIETH ANNIVERSARY]



PRESENTED BY THE SALT LAKE CITY ARTS COUNCIL
CALL 596.5000 FOR MORE INFORMATION

KRCL Staff

John Bortel, *General Manager/President*
Donna Land Maldonado, *Program Dir.*
Tristin Tabish, *Development Director*
Sandi Terry, *V.P. of Development*
Rui Hua, *Business Manager*
Bill Boyd, *Music Director*
Teri Runyan, *Assistant to the General Mgr.*
Bobbi Fouts, *Administrative Assistant*
Lewis Downey, *Chief Engineer*
Phil Taylor, *Engineer*
Maxine Trujillo, *Intern*

KRCL Board of Trustees

Stephen Holbrook, *Board Member Emeritus*
John Bortel, *President*
Fran Pruy, *Chair*
Chris Cook Keating, *Vice Chair*
JoAnn Wong Kilpatrick, *Secretary*
Tom Blackwood, *Treasurer*
Howard Lundgren, *Legal Advisor*
Robert Flores, *Board Member*
Robyn Nelson, *Board Member*
Paul Wharton, *Board Member*
Paul Frisby, *Board Member*
Marian Nash, *Volunteer Representative*
Randy Block, *Volunteer Representative*

KRCL's board meetings are open to the public on the last Wednesday of every month at 5:30 p.m. at the station.

Community Advisory Board

Kathy Brooks, *CAB Member*
Jim Gonzales, *CAB Member*
Tona Treetop, *CAB Member*

Voices is designed and produced by
Kerman Design.
Cover Design by Barb Soha.



Handmade Banjos
Gibson ♦ Deering Banjos
Gibson ♦ Flatiron Mandolins
Martin ♦ Gibson ♦ Guild ♦ Ramirez
Guitars ♦ New ♦ Used ♦ Vintage
712 East 100 South ♦ Salt Lake City
322-4682
Factory Authorized Repairs for
Martin ♦ Gibson ♦ Ovation ♦ Flatiron ♦ Guild

LETTERS

Letters From Our Listeners

KRCL welcomes comments and opinions from its listeners and will print all signed letters. KRCL reserves the right to edit offensive or inappropriate language.

Dear KRCL,

As the 1997 Workout for Hope concludes, we want to take this time to personally express to you our gratitude. Without your support and generous contributions, we would not have been able to raise over \$13,000 to help fight HIV/AIDS. Utah is unique, in that individuals and organizations such as yours come so willingly to contribute to the causes that so greatly affect the human spirit.

It is that commitment, by thousands of individuals, that ensures the success of the City of Hope National Medical Center in finding a cure for HIV/AIDS. Your contributions clearly place you in the who's who of the City of Hope's benefactors. In the coming months we will begin to plan for next year's Workout for Hope, and look forward to working with you to produce another successful event.

Sincerely,
City of Hope's Workout for
Hope Board/Staff

Dear KRCL,

How are you all doing? Me, fine. Enclosed is a money order for my pledge. Sorry it's so late...the next installment will be coming soon. Keep up the good work! I'll be bragging about you in Georgia!

Sincerely,
Tremaine Stephenson

Old Man,

Thanks for the Bluegrass Express program on Sunday! I'm working and living in Morgan, Utah for a few months and discovered your program by chance one Sunday. I was doing the usual "find the best stations and set'em routine" on my truck radio when KRCL tuned in. I'm from Dolores, Colorado (Four Corners) and I can pick up KRCL all the way to Monticello, but lose you about the Colorado line. I don't know the capabilities of improving your broadcast range, but if you could transmit from the Blanding Tower KRCL would certainly be welcomed by the Four Corners. Anyway, keep it going and have fun doing it!

Bob
Dolores, Colorado

P.S. I'll donate next year...even if I can't find you! Please play Tim O'Brien's version of Dylan's "Farewell Angelina"—I'm an old-timer, too!

Dear KRCL,

I spent four days in Salt Lake City this year and I think your station is great! (Even during your pledge drive.) I am enclosing a pledge which works out to \$2 per day I heard the station this year. I hope you have a listing of community radio stations left, I could use one of them.

Carry on,
Vince Shaw

Friends of KRCL,

Thanks so much for being such a great radio station. It's great to see some people donating their time and having fun playing some of the most enjoyable music there is. I really enjoy Slick Rock Reggae, Nite Roots,

Smile Jamaica, Sagebrush Serenades, Bluegrass Express, Wake Up Call and Breakfast Jam. They all really kept me somewhat sane last summer when I spent a month in the hospital. Keep up the good music and keep having FUN!

John Lane

Dear KRCL,

I am writing to express my appreciation for Dave Sieger's "Wake Up Call" over the last few years. I have been a long time fan of KRCL and Dave's Saturday show in particular. I will miss his contribution to KRCL, and I hope to continue to hear similar programming. Thanks, Dave!

Sincerely,
Liesl Kaplan

Dear KRCL,

Thank you for being you. Your radio station is the best in the state. I love your station so much because you're not on the air to attempt to attract more listeners, or be the most recognized, or to play the best music. You care and are concerned about us listeners. You give us great inspiration and help us out in ways you couldn't even imagine. I listen to your station as much as I possibly can. Therefore, I wonder if it is at all possible for you to send me a copy of a list of programs so I may listen even more. You are all beautiful people, keep up the great work, and may community radio never die.

Thank you again,
Ashley Nielsen



by Amy DeLong

What is Women Aloud? Where did it come from? And for what purpose was it brought into being?

About ten years ago, a group of women met with the idea of getting women's voices on the air. According to Becky Moss (Women Aloud volunteer and host of the program "Concerning Gays and Lesbians") women were not heard on regular stations very often because station programmers were convinced that women's voices were too high pitched to sound pleasant on the air. Women Aloud helped change that idea. Not only did women's voices sound just fine, but women's ideas and perspectives were reaching out to women and men across the Salt Lake Valley. Becky says she left her radio on 24 hours a day. Another woman reported that, while listening to the program in her car, she had to pull over to the side of the road to cry with the sheer joy of hearing radio programs with women's voices about subjects she could relate to.

Women Aloud made the breakthrough. Today in Salt Lake City, you can hear women D.J.s on some radio stations. Even though women's voices can be heard across the dial, Women Aloud still has an important mission. Lynne McCue Hamilton (another long-time Women Aloud volunteer) believes Women Aloud must help counteract the

tendency of today's media to use "sound bites." She says, "Community radio remains today's storyteller, and women's stories must be told."

To tell women's stories in their own voices is the current goal of Women Aloud. Diversity is a key element of Women Aloud's programming. Some of the programs in the past have been: Women in Marriage; Feminist Mystery Writers; Tongan Women's Culture; and Women in the Blues. This year Women Aloud programming covers such varied subjects as domestic abuse, percussionists, early lesbian musicians, and a music program where the only common link is that all of the performers are from Brazil. Any person (female or male, young or old, liberal or conservative) can tune in and find something interesting, educational, or entertaining (hopefully all three at the same time). We have no great agenda, except to show through music, personal stories, and discussions how wonderful, painful, amazing, and different from each other the lives and ideas of women can be.

Listen to the Women Aloud celebration August 2 and 3 on KRCL. Join us on August 3 from 3:00 until 5:00 p.m. for the Women Aloud open house at KRCL, 208 West 800 South, Salt Lake City. There will be Women Aloud T-shirts for sale and edible goodies to sample. ☑

KRCL

Would like to give special thanks to the following for making the 1997 Day in the Park such a success:

| | |
|--------------------------------|------------------------------|
| Fairview East Care Center | Intermountain Litho Printing |
| Printech Printing Technologies | Great Harvest Bread Co. |
| Lorraine Press | Prairie Foods |
| Kerman Design Inc. | Smiths Food & Drug |
| Gold Cross | Gardiner Distributing |
| BFI Waste Systems | Wild Oats Natural Foods |
| Zim's Inc. | Utah Green Products |
| Mapcon Mapping Consultants | |

A huge thanks also to the Day in the Park Committee and the rest of the dedicated KRCL gang for making Day in the Park an enjoyable time for everyone.

Folkin' Bluegrass! It's time for the 9th Annual Founders Title Company Folk and Bluegrass Festival, to be held at Deer Valley on Sunday, August 17 from 9:30 a.m. until dark. KRCL is very proud to once again sponsor this event.

If you've never attended this festival, it's the perfect way to spend a beautiful Utah summer Sunday. Pack your cooler with your favorite beverages, picnic basket with assorted munchies, and forget about calling the babysitter, because the kids will thoroughly enjoy the children's area—offering readings, crafts and other activities.

This year's headliners are Peter Rowan &

Friends and Greg Brown. Other folk and bluegrass artists set to perform are Laurel Canyon Ramblers, Kate Mackenzie, Austin Lounge Lizards, Catie Curtis, Within Tradition, Shane Jackman and Ken Shaw.

Please remember there are no animals permitted at the festival. Arrive early for best seating, and don't forget to bring an umbrella for shade and a blanket (or your favorite KRCL low-rider chair) on which to sit. For more information, contact the festival hotline at (800) 453-1360. For the best in folk and bluegrass music, keep an ear on KRCL 91FM. ☑



Founders Title Company
presents the 9th Annual

FOUNDERS TITLE Co. FOLK & BLUEGRASS FESTIVAL

Snowpark Lodge at Deer Valley

**PETER ROWAN & FRIENDS
GREG BROWN • LAUREL CANYON RAMBLERS
KATE MCKENZIE • AUSTIN LOUNGE LIZARDS
CATIE CURTIS • WITHIN TRADITION
SHANE JACKMAN • KEN SHAW**

SUNDAY, AUGUST 17, 1997

Gates open 9:00 AM • Showtime 9:30 AM • Rain or Shine!

Festival Tickets on Sale June 1st: Adult adv. \$17, Family adv. \$34,
Children 6 to 12 & seniors 65+ \$10. Kids under 6 Free.
Single Admission Gate \$19. Family Gate \$38

Tickets available at: All Dan's Foods Stores (SLC & Park City), Acoustic Music, Salt City CD,
Intermountain Guitar & Banjo, Local Music, Nuisound Music (Roy),
A Company of Friends (Logan), Founders Title Co. (Park City).
Order by phone: P.C. Chamber 1-800-453-1360

**Children's Tent • Coolers Allowed
No Animals Allowed**

Call 801-339-7664

Sponsored by: Founders Title Co., Park City Chamber Bureau,
Intermountain Acoustic Music Assn., KRCL 91 FM, The Event Newspaper, BWE
Music, Kennecott Copper, Precision Litho, SLC Weekly, & W.H.N. & Associates.



**Authentic Native American
Handcrafted Jewelry and Art**

252 South Main
Salt Lake City

364-2961

Dan's

**Bringing Salt Lake City
and Park City
Fresh Quality
Products And
Friendly Service**

**WASATCH
TOURING**

**Quiet Mountain Travel Specialists.
702 East 100 South
359-9361**

AUGUST 2, 1997

8:00-10:00 a.m.

A WOMAN'S HEART

Host Jo Wilson conducts a musical exploration of the reaches of the heart.



10:00-11:00 a.m.

WOMEN IN CONGRESS: PART I

A historical look at the role of women in the political process—from the election of Jeanne Rankin in 1916 to Shirley Chisholm's election in 1968. Part I, the historical overview, which includes the recognition of the suffrage movements—one for white, upper class women and (later) for Blacks.

11:00a.m.-1:00 p.m.

SONGS OF CHINA

Rui Hua presents traditional opera as well as popular Chinese songs from the 1930's to the 1990's.

1:00-1:45 p.m.

A DAUGHTER'S LOVE

Caring for our mothers when the roles are reversed, facing the chal-

lenges of dementia. A panel discussion with Susan Kies, Nancy Valdez and Katie Williams.

1:45-2:00 p.m.

THE SOUND OF SILENCE—WHERE ARE FEMINISTS IN TALK RADIO?

A reading by Marian Nash, from the book *Real Majority—Media Minority*.

2:00-4:00 p.m.

PAINTED LADIES

Highlighting the Louisiana spirit and music, going full circle from gospel to rap. Hosted by Sara Jordan.

4:00-6:00 p.m.

BRASILERIAS: THE GIRLS FROM IPANEMA

The women of Brazil strut their musical stuff with host Nancy Fillat.

6:00-7:00 p.m.

WOMEN IN CONGRESS: PART II

A historical documentary exploring the challenges of women in an all white male domain.

7:00-9:00 p.m.

NOTHING NEW ABOUT LESBIANS

A couple of hours of that "old time lesbian music," celebrating women who love women! Hosted by Becky Moss and Tanya Hawkins.

9:00-10:00 p.m.

WHEN JOEY HITS YOU, IT MEANS HE LIKES YOU

A live panel discussion on the socialization of violence, including a detailed look at the faces of domestic violence in Utah and throughout the

country. How did we come to teach violence as a way of life? Panel: Debra Daniels, YWCA; Dr. Theresa Martinez, Sociologist, U of U; Gina Edvalson, YWCA. Produced by Lynne McCue-Hamilton.

10:00 p.m.-12:00 midnight

DIVAS

Rich vocalizations by the likes of Ella, Bonnie, Diane, Billie, Patty, Rory etc. etc. Conducting the musical score, Maureen Mooney.

AUGUST 3, 1997

12:00 midnight-1:00 a.m.

ALASKAN WOMEN IN SCIENCE

An audio tour of the last frontier that features four scientists: Kathy Frost at Prince William Sound; Lori Quakenbush in Point Barrow; Eliza Jones from the Koyukuk Village, and Tory O'Connell, from just off the coast of Sitka, and their involvement in the major science issues facing the Arctic.

1:00-3:00 a.m.

STRING FERVOR II

Host Susan Kies offers a variety of stringed instruments.

3:00-4:00 a.m.

WOMEN IN CONGRESS: PART III

The image that newspapers portrayed of the female lawmakers and the impact and role the media plays in the US Congress.

4:00-6:00 a.m.

QUEVIVA CHANGO

The interpretation of religious music. Hosted by Elizabeth Visick.

6:00-7:00 a.m.

WOMEN IN CONGRESS: PART IV

The final segment features the Congressional female members who explain how they work to shape the

legislation that ultimately impacts the lives of millions.

7:00-9:00 a.m.

SOUNDS OF THE SACRED SHE

"She" is recognized and celebrated in many cultures around the world. Since time began, SHE is the sacred. Join Riversong in her musical tribute to the goddess in all of us.

9:00-9:45 a.m.

THE RHYTHM OF LIFE

From the religious rituals of early cultures, women have performed the intricate dances of the drum. Join several local percussionists for a discussion on the history of women in drumming. Amy DeLong will be joined by Susan Morton and friends.

10:00-12 noon

DO YOU KNOW MY NAME?

A compilation of music from new, obscure and/or unknown artists, covering a wide spectrum of styles and genres, hosted by Susanne.

12:00-12:30 p.m.

Marian Nash reads from the book, *Real Majority—Media Minority* by Laura Flanders.

12:30-1:00 p.m.

LT PRODUCTIONS-JINGLES

"Jingle" company owner Terri Anderson Lifsey, who is visually impaired, talks with producer Linda Reeder about the challenges in owning her own business and the obstacles she had to overcome in using the equipment, jingles, what they are, and how they are used in business.

1:00-4:00 p.m.

LAURA NYRO SPECIAL

A musical journey of the life of Ms. Nyro, who died of ovarian cancer in May, 1997.

4:00-5:30 p.m.

HOME GIRLS

Local musicians and bands who feature women on lead vocals, hosted by Bobbi Fouts.



5:30-6:00 p.m.

WOMEN OF THE IRISH

Produced by Marilyn Scharine.

6:00-7:00 p.m.

ERIN GO BRAGH

Looking at the resurgence of Irish folk singers of the last 15 years, with a heavy emphasis on one of the first Irish women's groups to break ground. Host Karen.



In conjunction with the FOUNDERS TITLE Co. FOLK & BLUEGRASS FESTIVAL

BWE Music presents:

The First Annual Workshops, Band Scramble and Jam!

Saturday, August 16, Noon to 10 pm

The Inn at Prospector Square.

Scramble and Jams are Free at

The Grub Steak Restaurant, Park City, UT

Workshop Tix: 800-453-1360 • Lodging: 800-453-3812

Workshop Tickets: Adv. \$20, \$25 Door

Tickets available at: Acoustic Music, Intermountain Guitar & Banjo, & the Park City Chamber Bureau.

Call 801-339-7664

SALT CITY CD'S
THE MUSIC EXPERIENCE

CD'S VINYL POSTERS
& MORE
Gift Certificates

878 E. 900 S. SLC UT
596-9300

THE
Salt Lake
Roasting
Co. & Café

320 East 400 South Salt Lake City


by John Bortel, General Manager/President

I would like to thank all of the volunteers that worked so hard on KRCL's Day in the Park (June 14, 1997). Steve Connor, Day in the Park Chairperson, and over 50 volunteers really gave us a celebration. Day in the Park was free and had some of the most wonderful people, the entire KRCL community, rubbing elbows with a lot of other people. The only bored individuals were the police officers that are routinely hired for security, and between you and me, I caught them tapping their feet to the music. Day in the Park is a unique event in that it is truly a family event with lots of activities for the young people as well as plain ol' fun for everybody else. If you missed it this year, we'll see you next June. It's our "pick of the summer."

Volunteers are the life of non-profits like

KRCL. Note the picture in this issue of Richard Odekirk (Odie) painting the front of our building. Our sign was so faded you could not even read the call letters. Now, if you drive down 800 South you can see the KRCL sign from the street. Odie and many others like him make KRCL an exciting place. Our thanks to all of you.

You are aware, no doubt, that KRCL's major funding source is the listener. Please remember as you have all sorts of fun this summer that the bills still come regularly to KRCL, even in the summer. KRCL does not receive one dollar from the state of Utah or an establishment of the state. KRCL is truly listener supported. Ultimately, that is our strength. Just don't forget us.


Thanks. 

Free Concerts
Thursday Evenings at 8:00
Gallivan Utah Center
Broadcast Live on KRCL 91 FM
Thursday Market
4:30 - 10:00 pm

TWILIGHT

concert series

July 10: THE MAGNOLIA SISTERS
July 17: JERRY GONZALEZ AND THE FORT APACHE BAND
July 24: ALISON BROWN QUARTET
August 7: TIM & MOLLIE O'BRIEN
August 14: KIM RICHEY
August 21: L.A. GUITAR QUARTET



[TENTH ANNIVERSARY]

PRESENTED BY THE SALT LAKE CITY ARTS COUNCIL


By Maxine Trujillo

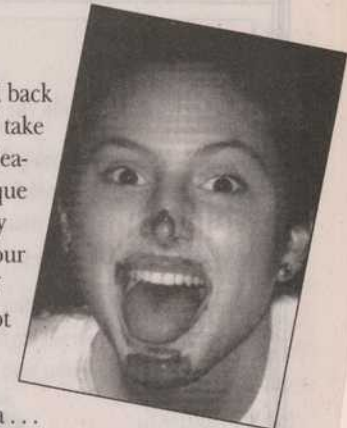
My name is Maxine Trujillo and I am the new intern with the colorful KRCL station. The beginning of my involvement at KRCL started last August when I walked in on the coveted KRCL staff lunch break to present myself. Tristin, KRCL's Development Director, being smart as a whip, recognized me instantly as an acquaintance from some time back. Ever since then, my home has been with KRCL.

I attend the University of Utah and plan to graduate autumn of '98, with an English degree. People have been asking me lately what I am going to do with an English degree or what kind of profession I am aiming for. If you're curious, the answer to that question is "I don't know." Hopefully this internship will shed some light on possible directions for me to follow.

Recently I was on the committee for KRCL's Day in the Park. This adventure brought new insight and friends into my circle of being. Throughout last June 14 (KRCL's Day in the

Park), I would stand back from the crowd and take in all of the visual pleasures. I noticed unique individuals who truly do add so much to our community, vibes of enjoyment that swept through the crowd and into the children in the play area...

these wonderful things I witnessed got me more excited to be an intern with KRCL. 

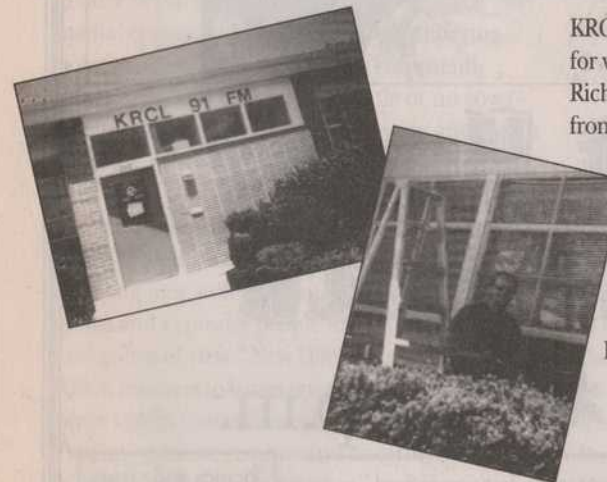





DIRECT IMPORTER
 Oriental Rugs & Kelims
 1464 Foothill Drive 582-3500

PAINTER EXTRAORDINAIRE!

Thanks to Odie



KRCL would like to thank Richard "Odie" Odekirk for volunteering his time to paint the station. Richard recently gave KRCL's business office and front entrance a much-needed facelift. So, the next time you stop by the station (208 West 800 South) to pay your pledge, pick up a thank-you gift, or drop by to chat—you won't miss us! Just look for the building with a couple of antennas on top and the lovely "tempest blue" door. If you'd like to donate your services to KRCL, give us a jingle! 

Tune in the "Mighty 91" for...

THE BLUE GOAT

THE FEATURE EDITION

THE ONLY LIVE BLUES RADIO BROADCAST IN UTAH!

NATIONAL BLUES ARTIST
 ON AIR, THE LAST MONDAY OF THE MONTH
 9:30-11:30 p.m.

BOB BOB BOB

165 So. West Temple • 328-GOAT

NIZHONI TRADING COMPANY



INDIAN HANDMADE JEWELRY,
 POTTERY, KACHINAS, MUSIC, ETC.
 262-7435
 FASHION PLACE MALL
 6194 S. STATE, MURRAY, UTAH

ACOUSTIC MUSIC



Come on in!
 We have three rooms full of guitars!

857 East 400 South • 531-7066

By Alana Kimbel

"New Dimensions listeners are a family of mission-oriented people who are telling the good news. Together we form a sacred center, a great communion of folks."

—philosopher and teacher Jean Houston

Many people look to KRCL for public affairs programming that goes beyond the every day hype of mainstream talk radio. New Dimensions stands out as a program that offers life-affirming solutions—not doom and gloom. Michael and Justine Toms and their guests focus on topics of interest to those who strive for a better world on all levels - social, political, personal, and spiritual.

In the past few years, New Dimensions has featured guests such as Nobel Peace Prize winner Thich Nhat Hanh; James Redfield, author of the *Celestine Prophecies*, and author Marlow Morgan. The Toms have also interviewed Anne Wilson Schaefer, author of *Native Wisdom for White Minds*, as well as Russell Means, one of the founders of the American Indian Movement and author of *Where White Men Fear to Tread*.

KRCL's Mission Statement states that "current events and public affairs should be covered in greater depth than is possible in commercial media, encouraging dialogue among differing points of view." New Dimensions consistently delves deep into issues that get little or no coverage in commercial media, interviewing guests with expertise in areas from psychology to physics to prisons.

New Dimensions plays a vital role in the diversity and bridging aspects of KRCL's mission by "drawing new audiences into a wide array of programs and exposing people to alternative lifestyles and points of view." New Dimensions exposes KRCL listeners to issues ignored or neglected by other media sources and offers positive solutions. "Voicing positive community concerns, KRCL hopes to bring people together," and New Dimensions helps make it happen.

New Dimensions airs on KRCL Sunday nights from 7:00 until 8:00 p.m. between Fret n' Fiddle and Nexus. KRCL's broadcast of New Dimensions is made possible by the many listeners who faithfully contribute Radiothon after Radiothon as well as by a grant from the Utah Humanities Council.

Here's what people say about "New Dimensions":

"New Dimensions is the place where people talk about things that ought to be talked about. Contrasted with other media, New Dimensions is far and away superior."

—Joseph Campbell, mythologist

"As I tried to find my path in life, New Dimensions served as a beacon to light the way . . . a constant support and gentle guide that somehow makes the struggle less difficult."

—Bernie Siegel, M.D.

"New Dimensions is a rare media treasure in these challenging times."

—John Bradshaw, author

"New Dimensions provides not only hope but valuable, usable information to facilitate personal and social change. It is a purveyor of options and solutions."

—New Realities Magazine

"I can imagine no better mission to support than New Dimensions for the peaceful transformation of the human race."

—D.Z., Louisville, KY

We'd love to hear your comments about New Dimensions. Please send them to:
Tristin Tabish, c/o KRCL, 208 West 800 South
Salt Lake City 84101.

You can visit New Dimensions Radio on the Internet at:
<http://www.newdimensions.org/home.html>

You can also write them to request a complimentary copy of the New Dimensions Journal, which lists all programs and schedules, as well as articles based on the radio programs, selected tapes from the archives and much more.

Write to: New Dimensions Radio, P.O. Box 569
Ukiah, CA 95482

You can reach New Dimensions by phone at 1-800-935-8273 or by sending e-mail to ndradio@mcn.org.

Let them know the station on which you enjoy New Dimensions . . . your community radio, KRCL!



Sweet Honey in the Rock

July 13  6:30 p.m.



Sign Language Interpreted

Tickets available thru Art Tix (355-ARTS)

Gates open at 5:00 p.m.

Concert Hotline: 581-IRIS

Rain location: Kingsbury Hall



Red Butte Garden Summer Concerts

CANYON KIDS CONCERT Saturday, the 12th "Debra Bonner & Troupe"

Picnics and treats available at the **Cuisine Unlimited** booth at the concert or order by phone for pick-up at the concert, 268-2332.



SUNDAY

MONDAY

TUESDAY

WEDNESDAY

THURSDAY

FRIDAY

SATURDAY

| | | | | | | | | |
|---------|--|---|--|--|---|--|--|---|
| 5:30 AM | BLUE LIGHT 'TIL DAWN | MORNING LIGHT | | | | | ROCKTROSPECTIVE with Tony O. | 5:30 |
| 6:00 | | BREAKFAST JAM <i>Acoustic, folk, and acoustic rock</i> | | | | | | 6:00 |
| 7:00 | MORNING LIGHT | | | | | | SANGEET MALAR with Uma Khandkar & Anjali Deshpande | 7:00 |
| 8:00 | LIVING THE CIRCLE OF LIFE with Max Packineau or Carolyn Benallyson | with the IceMan | with Matthew | with Gerry 'Uncle Suz' Runyan | with Susanne | with Gary Timm | BREAKFAST JAM with Jo Wilson | 8:00 |
| 9:00 | | | | | | | | 9:00 |
| 10:00 | SUNDAY SAGEBRUSH SERENADE with alternating hosts Phil Lanouette and Rick Stayner | PRELUDE TO PEACE with Sohrab | WOMAN TO WOMAN with Tami or Bobbi | LE CAFE FOLK with Donna | WOMEN: THE SECOND DECADE with Babs De Lay | GROOVIN' THE MORN with Earl | SATURDAY SAGEBRUSH SERENADE with John | 10:00 |
| 11:00 | | | | | | | | 11:00 |
| 12:00 | | READING | | | | | | 12:00 |
| 1:00 PM | | ARTSPEAK | PEOPLE'S BUSINESS | CONCERNING GAYS & LESBIANS | LUNCH ENCOUNTER | LA VOZ DE LA GENTE | WAKE UP CALL with Tim Stewart | 1:00 |
| 2:00 | | GLOBAL GUMBO with Kevin | GLOBAL GUMBO with Nancy Fillat or Craig Miller | GLOBAL GUMBO with Steven Seftel | GLOBAL GUMBO with Chiedu | SOULFUL SOUNDS with Ebay | | 2:00 |
| 3:00 | BLUEGRASS EXPRESS with 'The Old Man' | DRIVE TIME <i>Rock, blues, folk, soul, world beat, and more</i> | | | | | SMILE JAMAICA with Robert Nelson | 3:00 |
| 4:00 | | with Randy B. | with Steve | with Ken | with Bill Boyd | with Lance Drummond | | 4:00 |
| 5:00 | RIDERS RADIO THEATER | PACIFICA NEWS | | | | | LISTENER'S CHOICE it could be you! | 5:00 |
| 6:00 | FRET 'N' FIDDLE with Mark Cantor or Mike Evans | SOUND TRACK '91 | | | | | | 6:00 |
| 7:00 | NEW DIMENSIONS | ASIAN CHIMES: SONANCE OF KOREA | ASIAN CHIMES: VOICE OF POLYNESIA | ASIAN CHIMES: CHINESE RADIO | ASIAN CHIMES: VOICE OF VIETNAMESE | MUSIC FOR YOUR EARS with Tony Hodges | STATIC RADIO with Bernice and Tristin | 7:00 |
| 8:00 | | RED, WHITE AND BLUES with JR Rokich | HACIENDO DIFERENCIA with Ruth & Inma | SLICK ROCK REGGAE with Jeff Salt | AURAL DECAY with Dave S. | S.O.A.P. with Sam Smith | | 8:00 |
| 9:00 | NEXUS with Riversong | CROSSROADS with Ziggy | RITMO LATINO with Panama | NITE ROOTS with Papa Pilgrim | SEREMOUS ROPES with Richard | RAPP ATTACK with DJ Buzz | SHORT TERM EFFECTS with Dylan | 9:00 |
| 10:00 | VARIABLES with Scott Howard | | | | | | | TOTAL HARMONIC DISTORTION with Avant Bone |
| 11:00 | CRANIAL CIRCUITRY with Alan Moss | IN EXTREMIS with Brian | MUSIC | CORNUCOPIA | ILLUSTRATED BLUES with Jolene | ROCKTROSPECTIVE with Tony O. | 11:00 | |
| 12:00 | | | | | | | AFTER HOURS with Cindy Davis | 12:00 |
| 1:00 AM | ABSOLUTE ELSEWHERE with Brian | | | | | | BLUE LIGHT 'TIL DAWN with Mickey | 1:00 |
| 2:00 | | | | | | | | 2:00 |
| 3:00 | | | | | | | 3:00 | |
| 4:00 | | | | | | | 4:00 | |
| 5:00 | | | | | | | 5:00 | |

July 25 & 26

UTAH

JAZZ & BLUES FESTIVAL

PUBLIC BROADCASTERS
OF SALT LAKE CITY

BLUES FRIDAY Little Milton,
Coco Montoya,
Gospel Hummingbirds, and More!

**JAZZ
SATURDAY**

Jimmy Smith Quartet,
Mose Allison Trio,
Charlie Byrd
and the Brazilian Guitar Masters,
and More!

Call 355-ARTS or 355-5502

snowbird
event center

For overnight pkgs call 800-453-3000. Coolers on lawn seating only. Covered seating on a first-come, first-served basis. All sales final, no exchanges, no refunds.

by Donna Land Maldonado, Program Director

By the time you read this, Alana Kimbel, KRCL's Program Director Assistant, will be married and gone from KRCL. Her tenure at the station seemed to have flown by; was it really two years? That means she has also left her Global Gumbo show; she will be missed. We wish her good luck and happy travels with her husband, Mark Considine, also a KRCL person.

Celebrating women in August? Why not! No one ever said everything has to be done in the prescribed month of March (Women's History Month). So, being the non-conformists we are, we will once again take the path least traveled... and turn the first weekend of August into WOMEN ALOUD. The weekend will showcase the feminine perspective of our precious Mother by giving the voice of women untethered time. Interested in getting involved by promoting your business during the weekend? Leave a message at KRCL (363-1818) for Becky.

Please note there have been some slight changes during the 12:30 p.m. public affairs programs—a couple of additions that'll help us better

understand our wonderful world. Check the public affairs schedule in back.

Stay tuned to your community station—an informed community is a strong community.

Donna

Buying or selling a home in 1997 should not only be fun... but profitable!

- 13 years Full Time Agent
- Licensed Buyers or Sellers Agent

Lewis, Wolcott & Dornbush
REAL ESTATE
467-2100

Babs DeLay
Associate Broker
Sec./Treasurer
Salt Lake Board of REALTORS®
babs@lwdrealestate.com

**Dust 'em
off and
move
'em in!**

KRCL is now accepting record and CD donations for our upcoming **CD & RECORD SALE**, happening this September. **Bring your new and used CD and vinyl** favorites to KRCL, 208 West 800 South, Salt Lake City... who knows, that Slim Whitman album you loved as a teenager may be the envy of everyone on your block! Turn your oldies and dusties into a treasure for someone else!

Donations will be accepted through the end of August.

Please, NO BOOKS! Questions?

Call Bill at 363-1818.

Public Affairs

Morning Light

SUNDAYS 6:30AM Latino USA

The Radio Journal of news and culture for the Latin population; in English.

MONDAYS 5:30AM This Way Out

A news magazine regarding gays and lesbians.

TUESDAYS 5:30AM Living Dialogues

Alternative medicine.

WEDNESDAYS 5:30AM Making Contact

Not about conventional wisdom, but rather to serve democratic communication. Produced by National Radio Project.

THURSDAYS 5:30AM CounterSpin

Produced by FAIR, Fairness & Accuracy In Reporting, the national media watch group based in New York. Hosted by Laura Flanders and Martin A. Lee.

FRIDAYS 5:30 AM High Plains News or National Native News

Riders Radio Theater

SUNDAY 5 PM

New age cowpoke humor, zaniness and cowboy music by Riders in the Sky.

New Dimensions

SUNDAY 7 PM

A timeless and relevant interview series well suited for the "inner directed" audience, hosted by Michael and/or Justine Toms.

JULY 6 "Sacred Partnership," with Sue Patton Thiel, who defines the sacred partnership as "a rich and deep friendship between equals that brings to us sanctuary, soul, growth

and sizzle." She is a licensed psychotherapist who offers tools needed to resanctify your own partnership. #2598

JULY 13 "Peace Work," with Careen McKeown. This conversation illuminates the complexities in Northern Ireland, and helps us to develop greater compassion and a deepening of our own thinking regarding ethnic factions within any nation. Co-founder of Peace People, along with Nobel Peace Prize Laureates Betty Williams and Mairead McGuire. #2586

JULY 20 "Live Long and Feel Good," with Dr. Andrew Weil, who says, "most of the diseases that kill and disable people prematurely in our culture are diseases of lifestyle that can be avoided if people would make better choices." Dr. Weil has done a lot of research and come up with suggestions to keep the inherent healing system in peak working order through developing a lifestyle that is sound in body, mind and spirit. #2623

JULY 27 "Unlocking Your Creativity," with Julia Cameron, who offers simple tools to deal with fear and negativity about our right and responsibility to be creative beings and discover a sense of security. "...if there is something that you are passion-

ately in love with and wish you could do, the odds are you can." #2591

AUG 3 "A Spiritual Reformation," with James Redfield, author of The Celestine Prophecy, one of the most successful self-published books of all time. The conversation will leave you filled with hope for the future and believing in your dreams. Life is a spiritual journey filled with mystery and magic that comes from transforming ourselves from the inside-out. #2601

AUG 10 "Be Who You Are," with Gangaji, author, who teaches in the lineage of Sri Ramana Maharshi, one of India's most beloved sages. After decades of searching, she found her true self and now assists others in removing obstacles to their own realization of truth to discover "the fullness, the radiance, the boundlessness of their being." #2609

AUG 17 "Global Capitalism: Beyond Conventional Wisdom," with William Greider, national editor of Rolling Stone magazine and author, who shares his compassion for people on the front line of the factories. Greider leaves a lasting impact and provides suggestions with ways one can get involved and help steer the world's changing economic trends. #2608

AUG 24 "The Logic of Intuition," with Laura Day, who talks about using your intuition to help you understand people better, make informative decisions about your health and guide your life. A hunch, the sixth sense, or ESP—we all have it. Day talks about her seven systematic steps for kicking the intuition into high gear. #2612

AUG 31 "Schlepping Towards Enlightenment," with Lama Surya Das. A Jewish lama from New York gives us a modern American update

on the Eastern spiritual wisdom to which he has dedicated his life since the sixties. His gentle humor and sincerity shine through hard reminders that "if it doesn't show up in life as common sense, as sagacity, as sanity, what good is it?" #2571.

Reading

WEEKDAYS 12 PM

Short stories, novels and/or essays read by a variety of readers from a variety of different sources.

ArtSpeak

MONDAYS 12:30 PM

Interviews with local or visiting artists. Produced by alternating hosts: Brian Crockett, Guy Lebeda, Amanda Simmons, Betsy Quintana, and Marilyn Scharine.

JULY 7 Amanda talks with guests about "This is the Place" state park.

JULY 14 Poet Lance Cole talks with Guy about his program for incarcerated youth at Genesis, a detention center for young men.

JULY 21 Marilyn talks with Chicana actress Alma Martinez, who began her career in "Zoot Suit."

JULY 28 "Other" arts festivals: a look at arts festivals other than the well known biggies. Betsy takes us on a journey around Utah to introduce us to the "other" arts festivals.

AUG 4 Have you ever wondered what happens backstage at the opera? Join Marilyn in her audio visit behind the curtain.

AUG 11 Brian explores "Art in Transit." Moving art, art that moves? Actually it's a public art program of the Light Rail System.

AUG 18 Amanda converses with Amy Sanyer about her specialization in choreography and how the interpretation collaborates the other aspects of movement.

AUG 25 Guy interviews Pat Russell, whose "River of Words" helped her win a Teacher of the Year award. "River of Words" is the contribution of students through the guidance of Ms Russell.

People's Business

TUESDAYS 12:30 PM

JULY 1 The Mormon Women's Forum

Join hosts Margaret Toscano and/or Laraine Wilkens as they discuss issues and opinions within and beyond the prominent Utah religious culture.

JULY 8 Living Dialogues

A focus on alternative and integrative medicine. Today the guest is Dr.

Andrew Weil.

JULY 15 The Mormon Women's Forum

JULY 22 **Alternative Health**
Iginia Boccalandro speaks with guests about alternative methods of having a healthier lifestyle.

JULY 29 **Living Dialogues**
With guest Dr. William Collinge.

AUG 5 Utah Mormon Women's Forum.

AUG 12 **Living Dialogues**
With guest Joan Boryseno.

AUG 19 The Mormon Women's Forum

AUG 26 **Alternative Health**
Iginia Boccalandro and guest.

Concerning Gays and Lesbians

WEDNESDAYS 12:30PM
News and information from Utah's gay and lesbian population with Becky and/or Jeff.

Lunch Encounter

THURSDAYS 12:30PM
JULY 3 **Museum Notes**
An exploration of the natural world and its inhabitants, with hosts Betsy Price and Ann Hannibal.

JULY 10 **Wasatch Update**
Our environment, who's responsible? What are our responsibilities? Join Gale Dick as he introduces this new program and who will be involved.

JULY 17 Museum Notes

JULY 24 Wasatch Update

JULY 31 **Special Feature**
National recognition of former KRCL volunteer Carla Gourdin, who has been awarded "Fellow to Yamagata," International Visual Arts Institute. Carla is one of six people chosen in the United States and one

**Mount Olympus
Spring Water**
1825 South 3730 West
Salt Lake City



FreeWheeler
Pizza

The Preferred Pie
Delivered FREE

Sugarhouse
1624 South 1100 East
486-3748
♦ ♦ ♦

Try our Sourdough
Super Subs and zesty
Lasagna!

Choose from over 30
delicious toppings!

Deluxe Salads
Famous Garlic Rolls
Cold Sodas

Mention KRCL
and receive 1
dozen famous
Garlic Rolls
with any Large Pizza Order.
(not valid with other discounts)

FreeWheeler
Pizza

of twelve chosen in the world. Ms. Gourdin will be the guest today.

La Voz de la Gente

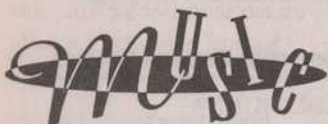
FRIDAYS 12:30PM

Guests talk with Rebecca Chavez-Houck, Teresa Martinez or Greg Marcial about the topics of advocacy, service, information, political and cultural concerns of and about Utah's Hispanic population.

Pacifica News

WEEKDAYS 6 PM

National and international news from an alternative point of view. Produced by the National Pacifica News Department.



Sound Track '91

MONDAYS 6:30PM **Faces of Diversity**
Host James Jun.

TUESDAYS 6:30PM **The Evolving Male**
For men who are taking an inner journey and questioning traditional male roles, this show offers a new look at men and masculinity. Host Matt Wilson.

WEDNESDAYS 6:30PM

In The Opinion Of...
A local production on issues of today from a local perspective, with Mark Hampton and/or Ann Floor.

THURSDAYS 6:30PM **Artbeat**

The radio journal of arts in America. Produced by Elisabeth Perez-Luna.

FRIDAYS 6:30PM **Latino USA**

The Radio Journal of news and culture for the Latin population; in English.

Short Features

MONDAYS 7:30AM **Arboretum Report**

TUESDAYS 11:30AM **Because We're Here**

TUESDAYS 5:00PM **Environmental Update**

WEDNESDAYS 9:30AM **Letters To The Editor**

WEDNESDAYS 12:55PM **Because We're Here**

THURSDAYS 9:30AM **Rape Recovery Report**

SUNDAYS 9:57AM **Environmental Update**

DAILY 7:00AM AND 3:00PM **Earth & Sky**

DAILY 5:30 AND 10:00PM **Stardate**

WEEKDAYS 6:28PM **Letters to the Editor**

Southern Thunder

Utah's Premier Award-Winning Tattoo Studio

819 East 2100 South - Salt Lake - 485-8282

- Custom Tattoos
- Exotic Body Piercing
- Full Line of Jewelry

Health Department licensed and approved

GOURMET CHOCOLATE COVERED ESPRESSO BEANS

11 DISTINCTIVE FLAVORS

Mail Order or Delivery
Great for Parties, Holidays,
Office or any Occasion

Call Link at **801-489-6071**
Leave a Message if There's No Answer

Alternative/Punk Rock

THURSDAYS 10:30 PM **Seremous Ropes**
Alternative rock—R.E.M., The Smiths, Prefab Sprout—with host Richard.

SATURDAYS 9 PM **Static Radio**
Halo Benders, Rites of Spring, Bikini Kill, Eric's Trip, Pavement and other delights. Bern and Tris host the weekly party in your speakers.

Industrial/Gothic/Experimental

MONDAYS 3 AM **Absolute Elsewhere**
Avante-pop. Dark ambience, and things of uncommon nonsense. Hosted by Brian.

MONDAYS 1 AM **Cranial Circuitry**
Progress into the future with Electronic Body Music to Industrial. Hosted by Alan Moss.

TUESDAYS 1 AM **Total Harmonic Distortion**

An exploration of the breech-core with your host, Avant Bone. Pre-paleolithic, post-industrial, cybergothic tunes for those who drown in their sleep.

TUESDAYS 3 AM **In Extremis**
Post-industrial sound scrapes from the edge of the abyss. With host Brian.

SUNDAYS 12 AM **Short Term Effects**
Mostly dark music, from the Sisters of Mercy to Siouxsie and the Banshees, and Sol Invictus to Nick Cave. With host Dylan.

Blues/R&B

MONDAYS 8 PM
Red, White, and Blues

Explore the wide variety of this distinctively American musical form, with a smattering of its offsprings. JR Rokich hosts.

MONDAYS 9:30 PM **KRCL Presents Blue Goat Feature Edition**
Last Monday of each month at the Dead Goat Saloon.

MONDAYS 10:30 PM **Crossroads**
A variety of American and British blues, both traditional and modern. Tune in for the best of delta, Chicago, Texas and west coast, yesterday's and today's blues artists. With host Ziggy.

THURSDAYS 9 AM **Women: The Second Decade**
Babs De Lay shares the accomplishments of women from the 1920's to the 1990's.

FRIDAYS 3:30 AM **Illustrated Blues**
Paint a picture in your mind...from the hard-hitting to the melancholy. Hosted by Jolene.

Ethnic/World

SUNDAYS 7 AM **Living the Circle of Life**
Native American music, news and information with host Max Packineau or Carolyn Benallyson. National Native News airs at 8:30 am.

MONDAYS 1 PM **Global Gumbo**
Auditory Geography—with no tests. Brought to you from the musical corners of the round earth by Kevin.

MONDAYS 7 PM **Asian Chimes**
Sonance of Korea. Hosted by James Jun.

TUESDAYS 1 AM **Liquid Rhythms**
With Ken Burrola.

TUESDAYS 1 PM **Global Gumbo**
Music from around the globe. Hosted by Nancy Fillat or Craig Miller.

TUESDAYS 7 PM **Asian Chimes: Voice of Polynesia**
Music from Samoa, Tonga, Tahiti, and Hawaii with alternating hosts—Ellen Selu, Joel Uluakiola, Danny Tupua and Misi Auva'a.

TUESDAYS 8:00 PM **Haciendo Diferencia**
With Ruth and Inma.

TUESDAYS 10:30 PM **Ritmo Latino**
With Panama.

WEDNESDAYS 1 PM **Global Gumbo**
An entertaining as well as educational experience from Afro-beat—Zouk, including the 3 R's: rumba, rapso, and rara. With your host Steven Seftel.

THURSDAYS 1 PM **Global Gumbo**
Musical jaunts around the globe, set to break all barriers. Hosted by Chiedu.

THURSDAYS 7 PM **Asian Chimes: Voice of Vietnamese**
With host Thao.

SATURDAYS 7 AM **Sangeet Malar**
From the subcontinent with hosts Anjali Deshpande and Uma Khandkar.

Folk/Bluegrass

SUNDAYS 10 AM **Sagebrush Serenade**
Music to ease you from your morning cup through your Sunday afternoon. Folk and rock with a country flavor with alternating hosts Phil Lanouette and Rick Stayner.

SUNDAYS 2 PM **Bluegrass Express**
Join "The Old Man" for the best in bluegrass music at the root of country and folk tunes popular today.

SUNDAYS 5:30 PM **Fret 'n' Fiddle**
Celtic and American traditional music on alternating programs. From the immigrant ships...to the campfires of the 1840's...to the honky tonks of the 1940's and beyond. Hosts Mike Evans and Mark Cantor alternate Sundays.

MON-FRI 6 AM **Breakfast Jam**
A savory blend of acoustic, folk-rock, and bluegrass tunes stirred up with various hosts. A pleasant start to your day.

National Public Affairs Programs on KRCL

For further information, copies, transcripts, etc. please contact the producers directly.

New Dimensions
PO Box 410510
San Francisco, CA 94141
800-935-8273
ndradio@igc.org

Counterspin
Fairness and Accuracy in Reporting (FAIR)
800-847-3993

Pacifica Radio Archives
3729 Cahuenga Blvd West
North Hollywood, CA 91604
800-735-0230
pacifica@peacenet.org

National Native News KMBA
810 East 9th Ave
Anchorage, AK
907-258-8898
kmba@alaska.net

WINGS
PO Box 33220
Austin, TX 78764
512-416-9000

Latino USA
PO Box 7789
U of TX at Austin
Austin, TX 78713-7789
800-535-5533
lusa@www.as.utexas.edu

High Plains News Service
104 North Broadway, Suite 412
Billings, MT 59101
1-800-729-3540
hpns@worc.org

This Way Out
The International G&L Radio Magazine
P.O. Box 38327
Los Angeles, CA 90038
818-986-4106
TWOradio@aol.com

Stardate
stardate@astro.as.utexas.edu

Earth and Sky
people@earthsky.com

TUESDAYS 9 AM Woman to Woman

Tami Fraser or Bobbi Fouts present a variety of music by women. Rock, jazz, soul, folk, country, all by women.

TUESDAYS 3 PM Drive Time

Join Steve for mostly "urban folk," but don't be surprised to hear some blues, zydeco, or worldbeat.

WEDNESDAYS 9 AM Le Cafe Folk

Contemporary folk music with a touch of tradition and world. Hosted by Donna.

THURSDAYS 3:30 AM Cornucopia

An eclectic blend of music styles with an emphasis on folk, acoustic and women's music. Sara hosts.

Metal/Hardcore**SATURDAY 1 AM To Hell and Back**

A splattering of thrash, speed, industrial grindcore, and death metal. Your parents will hate it. Hosted by Les Nilsson.

New Age/Electronic**SUNDAYS 8 PM Nexus**

Powerful, peaceful, pilgrimage. Music that takes you on a journey from aboriginal ancestors to future dreamsongs, discovering our connection with all things. Host Riversong.

SUNDAYS 10:30 PM Variables

Electronic, new age and contemporary jazz with your host Scott Howard.

MONDAYS 9 AM Prelude to Peace

Contemporary space music, electronic, cross cultural, environmental, and contemplative recordings by musicians from around the world. Hosted by Sohrab.

Reggae**WEDNESDAYS 8 PM Slick Rock Reggae**

Selector Jeff Salt comes in with all styles of reggae mixed in a way you're not likely to hear elsewhere.

WEDNESDAYS 10:30 PM Nite Roots

Reggae, reggae, reggae with Papa Pilgrim. Listen for "Reggae Runnings"—upcoming reggae events.

SATURDAYS 4 PM Smile Jamaica

The tradition continues: from Spongi Reggae to deep dish Dub. Host Robert Nelson serves up strict roots.

Rock**THURSDAYS 3 PM Drive Time**

An aesthetically precise selection of rock, folk and related music. We do try to be lively. Hosted by Bill Boyd.

THURSDAYS 8 PM Aural Decay

A diverse mix from rock to reggae. You want covers? We got 'em. If they don't fit, we'll take 'em in a little. Hosted by Dave S.

FRIDAYS 1 AM HearAbouts

Emphasis on the local and emerging regional scenes from around the country and world. New directions in rock, americana and the insurgent sound. Rotating hosts, Mike and Paul.

SATURDAYS 4 AM Rocktrospective

Traditional rock 'n' roll, rhythm and blues, new and homegrown music, and always listeners' requests! The Rocktrospective calendar features a historical vision of the past with an ear to the future. Hosted by Tony O.

SATURDAYS 10 AM Sagebrush Serenade

A musical history lesson without the lecture. Hosted by John Florence.

SATURDAYS 1 PM Wake Up Call

With host Tim Stewart.

Soul/Rap/Urban**MONDAYS 3 PM Drive Time**

100% fattening rhythm and groove with chef Randy B. Crossover cuisine served with a refined sauce of jazz, funk, reggae, R&B, latin, blues and whipped cream.

FRIDAYS 9 AM Groovin' the Morn

A collection of soul and jazz with occasional rap. A twist of oldies and dusties will lighten the mood. Hosted by Earl B.

FRIDAYS 1 PM Soulful Sounds

Soul, rap, '70's to '90's. Hosted by Ebay.

FRIDAYS 3 PM Drive Time

Lance Drummond brings you rhythm and blues, old rock 'n' roll.

FRIDAYS 7 PM Music for Your Ears

The jazzy side of soul. Hosted by Tony Hodges.

FRIDAYS 8:30 PM S.O.A.P.

Sounds of a party. Sam Smith keeps you up to date with the rest of the world.

FRIDAYS 10:30 PM Rapp Attack

Hardcore rap with host DJ Buzz.

SUNDAYS 2 AM After Hours

It's all about the music. Catch the vibe! Hosted by Cindy Aperges-Davis.

Women's Programming**TUESDAYS 9 AM Woman to Woman**

Tami Fraser or Bobbi Fouts present a variety of music by women. Rock, jazz, soul, folk, country. Women's news and information included.

THURSDAYS 9 AM Women: The Second Decade

Babs De Lay shares the accomplishments of women from the 1920's to the 1990's. Women's News, Rape Recovery Report, and specials on women in history. ☑

"The unique mission of public broadcasting is to meet the entertainment and information needs that either cannot or will not be undertaken by commercial broadcasters. It seeks excellence in its programming, not mediocrity; diversity rather than conformity; innovation instead of repetition; creativity rather than mimicry. While it has remained available and responsive to all groups and interests, it has not been required through commercial or financial interests to be obligated to any."

KRCL informs, engages, enlightens and delights. It makes a positive difference in the lives of people along the Wasatch Front. As a listener-supported community radio station, KRCL bases programming decisions on the area's listening needs and encourages listener participation in all activities.

KRCL belongs to the people of the Wasatch Front, but KRCL will offer locally-produced programs to areas outside the Intermountain West, to introduce our vision to a wider audience. To meet diverse needs, wants, and hopes, the station's Board of Trustees and staff are committed to providing high quality local programming through:

Accessibility: KRCL is especially committed to populations traditionally denied media access. Racial minorities, women, and persons interested in broadcasting but lacking professional skills are encouraged to participate.

Education: Current events and public affairs should be covered in greater depth than is possible in commercial media, encouraging dialogue among differing points of view. Not shying away from conflict or confrontation, KRCL emphasizes issues affecting low-income people.

Diversity: A wide variety of musical and cultural information programs are pursued, with emphasis on live broadcasts with their unpredictable yet spontaneous appeal. Diversity means drawing new audiences into a wide array of programs and exposing people to alternative lifestyles and points of view.

Bridging: KRCL covers events and public issues in a way that "bridges" Utah's predominant culture with ideas and expressions not given air time elsewhere. Voicing positive community concerns, KRCL hopes to bring people together.

Programming Quality: While serving as an alternative to the commercial media and utilizing untrained newcomers, KRCL strives to achieve programming quality that attracts listeners.

Localism: Emphasis is on topics significant to the Wasatch Front community; e.g. Utah's pluralistic culture, the uniqueness of Utah's environment, and the creative artistic expression of its people. ☑

THE KRCL PROGRAM GUIDE is published bi-monthly by Listeners' Community Radio of Utah, Inc., a non-profit organization. Unsolicited submissions are welcome but cannot be returned. The editor reserves the right to edit any manuscripts to conform to standards in accordance with KRCL policy. All letters, manuscripts, photos or artwork should be sent attention: Managing Editor, Tristin Tabish, KRCL Program Guide, 208 West 800 South, Salt Lake City, UT, 84101. Opinions expressed are not necessarily those of KRCL's volunteers, staff or Board of Trustees.

KRCL's Address: KRCL, 208 West 800 South, Salt Lake City, Utah 84101. The office phone is (801) 363-1818, studio line (801) 359-9191. KRCL's e-mail address is mailman@krcl.org. KRCL's web address is <http://www.krcl.org>.

KRCL is a 16,500 watt listener-sponsored community radio station broadcasting to over 1.4 million people. **KRCL** can be found on the dial at 90.9 FM, 96.5 in Park City, and **KZMU** at 89.7 FM in Moab, Utah. ☑

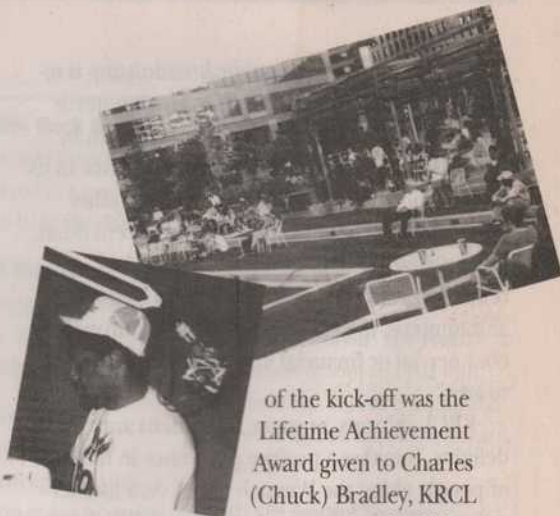
By Sam Smith

A celebration called Juneteenth marks the anniversary of freed black slaves in Texas. These slaves found out they would be freed sometime between June 13 and June 19, 1865—two years after the Emancipation Proclamation had been passed.

The city of Ogden celebrates this event annually, organized by the Juneteenth Committee and the Ogden Chapter of the NAACP. This festival helps educate people about African American history, provides health education, multi-cultural food, and also a wide variety of live entertainment.



Salt Lake City was added three years ago, was a part of the 1997 Juneteenth Festival. The kick-off was held at the Galivan Center and had a great response from the community. The highlight



of the kick-off was the Lifetime Achievement Award given to Charles (Chuck) Bradley, KRCL volunteer, for all of his community service. The celebration then moved to Ogden for a parade and much more entertainment.

The Juneteenth Committee is doing their best to make the Juneteenth Festival grow each year. With the continuing support of the community and KRCL, next year's Juneteenth Heritage Festival will be an even greater success.

Would like to thank **KRCL**
THE SUN CLUB
200 South 700 West, Salt Lake City
&
CREAM O' WEBER
in grocery stores across Utah

for sponsoring KRCL's 1997
Stephen Holbrook Visionary Awards Dinner

Gardiner
DISTRIBUTING
WHOLESALE
FRESH PRODUCE
801-364-7277
554 West 1st South
Salt Lake City, Utah 84101

THE Sun
A PRIVATE CLUB FOR ITS MEMBERS
Open Daily At Noon
702 West 200 South • 531-0833
Salt Lake City, Utah 84104

Ray of Dawn
Clothing & Gifts
Experience unique
treasures of the world!
309 So. Main Street
- 359-3632 -

Acoustic Music
857 East 400 South

Baker's C&C, Inc.
367 West Paxton (1170 South)

Bradley Screenprint
567-1996
1-800-656-1991

Catalyst
362 E. Broadway

**Corporation for Public
Broadcasting**
Washington, D.C.

Cream O' Weber
Look in your local grocery store

Dancing Cranes Imports
2144 South Highland Drive

Dan's Foods
Salt Lake City
Park City

Downtown Storage
29 West 800 South

The Event Magazine
Distributed along the Wasatch

Foothill Oriental Rugs
1464 Foothill Drive

Gardiner Distributing
554 West 100 South

Headquarters
665 South State

Hispanic Yellow Pages
943-5295

Intermountain Guitar and Banjo
712 East 100 South

Intermountain Litho Printing
4030 South 500 West

Mt. Olympus Waters, Inc.
1825 South 3730 West

The Metropolitan Cafe
173 West Broadway

Nizhoni Trading Company
Located in the NE corner of
Fashion Place Mall

Overnight Graphics
533-0435

The Park Cafe
604 East 1300 South

Ray of Dawn
309 South Main Street

Salt City CD's
878 East 900 South

Salt City Weekly
Distributed along the Wasatch

Salt Lake Art Center
328-4201

Salt Lake Roasting Co.
320 East 400 South

Shooterz
1225 Wilmington Avenue

Southern Thunder Tadoo Co.
819 East 2100 South

**Space Agency Concerts and
Theatricals**
355-2200

Sunrise Press
252 West 1300 South

Tea and Trumpets
1515 South 1500 East

The Sun
A private club for its members
702 West 200 South

T P Gallery
252 South Main

United Concerts
536-1234

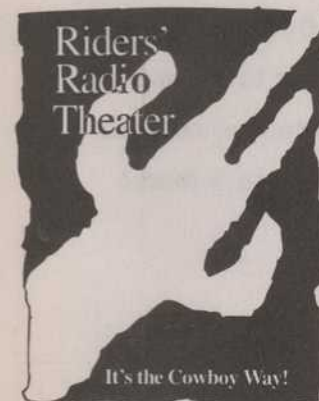
**Utah Museum of Natural
History**
University of Utah

Video One
484 South 900 West

Wasatch Touring
702 East 100 South

Wizards and Dreams
1057 East 2100 South

If you are interested in underwriting on
community radio KRCL, please call
Tristin at 363-1818.



It's the Cowboy Way!
Brought to you by
Bakers C&C
doing business
THE COWBOY WAY!



**Tea and
Trumpets**
Gourmet Take Away Deli,
Bakery and Tea Purveyers
at
1515 South 1500 East
Salt Lake City

CATALYST
Utah's Progressive Monthly Magazine

IS
Community
Environment
Health
Politics
Art
Food for the soul

READ IT!



208 West
800 South
Salt Lake City
Utah 84101

NON-PROFIT
ORGANIZATION
U.S. POSTAGE
PAID
SALT LAKE CITY, UTAH
PERMIT NO. 3973

Please notify us of any change of name or address. The post office will not forward the Program Guide.



**If only radio had
eyes... you'd then
see just how much
STUFF we have!**

Keep seeing those retro KRCL T-shirts around town? Out running Saturday errands? Love your community radio station? Remember to make a stop at KRCL for the KRCL Yard Sale, where we'll be selling tons of cool stuff—KRCL sweatshirts, T-shirts, tote bags, and much, much more!

WHEN?

Saturday, August 23

TIME?

10:00 a.m. through 5:00 p.m.

WHERE?

KRCL Studios, 208 West 800 South Salt Lake City

WHY?

We need the space—and we don't want all of these goodies to go to waste!