



krcl

90.9 fm Salt Lake
96.5 fm Park City
www.krcl.org

winter 2001-02

community radio members' newsletter

A Tangled Web

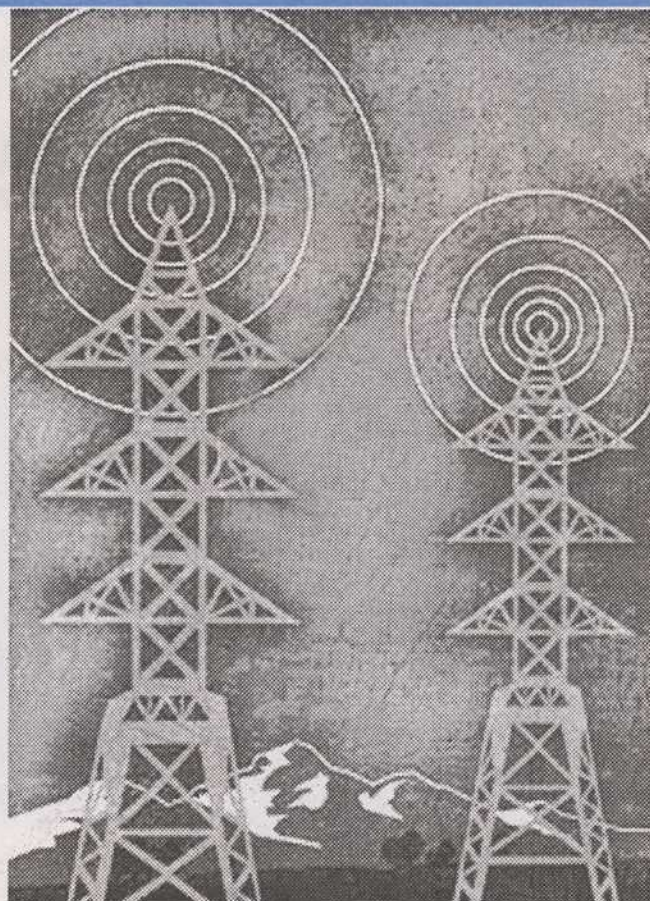
Webcasting proves to be more of a challenge than once thought

KRCL has been webcasting (broadcasting our signal over the internet) for about a year now. We have listeners in many states around the country, and many countries around the world. We have heard from folks who listen to KRCL in England, China, and other far-flung places. But will KRCL be able to continue to offer this service?

Radio stations once thought they would gain extra listeners - and extra money - from their webcasts. But the reality is that stations are paying big bucks to webcast, and the costs are only going up. Not only that, but the future of webcasting is growing murkier by the day.

The recording industry lobbied for, and achieved, passage of the Digital Millennium Copyright Act ("DMCA"). The DMCA, while designed to prevent unauthorized copying and distribution of sound recordings (think Napster), also creates a new musical licensing system exclusively for webcasters. This new system would require extensive royalties that are not required of traditional broadcast radio. Exactly how much? That hasn't been determined yet, though the recording industry states they plan to make the fees retroactive once the amounts are established. So the meter is running, and KRCL, like other stations that are webcasting, could be running up bills in unknown amounts.

The DMCA also offers an alternative, less unwieldy, licensing structure, but only to stations that agree to restrictions on what they broadcast over the web. These restrictions include agreeing to identify, in text on the listener's computer screen, the song, artist and album. Webcasters would also agree not to play more than three songs from a particular album, and no more than two consecutively, in any three-hour period. In addition, webcasters would also have to agree not to play more than four songs from a particular artist or from a boxed set, including no more than three consecutively. So far these restrictions and copyright rules aren't being enforced. But many stations around the coun-



try have decided it's not worth the gamble, discontinuing their webcasting to avoid the risks.

KRCL has never put these kinds of restrictions on their programmers, and there has been much discussion around the station about whether webcasting is worth doing so. There are those who feel that KRCL should be a local station, and that if broadcasting around the world puts us in a difficult position, we should just stop doing it. There are others who love the idea of being heard from Tucson to Timbuktu, and who want to see KRCL grow by using new technologies. What do you think? Send your comments to Troy Mumm at troym@krcl.org. We're watching the developments closely as lawmakers, record labels, and radio stations work on regulating this new frontier. Meanwhile? We stream.

VOICES

KRCL Board of Trustees

Gerald Nichols - Chair
Fran Pruyn - Vice Chair
Robyn Nelson - Secretary
Karen Melville - Treasurer
Howard Lundgren - Legal Advisor
Jo-Ann Wong Kilpatrick
Robert Flores
Nadra Peragallo
Jennifer Yim
Marian Iwasaki
Chris Keating
Chiedu Megwalu - Volunteer Rep
Neil Tanner - Volunteer Rep
Nancy Fillat - Volunteer Rep
Stephen Holbrook - Emeritus
Paul Wharton - Emeritus

Full-time Staff

Donna Land Maldonado - General Manager
Troy Mumm - Operations Manager
Gena Edvalson - Public Affairs Director
Kami St. John - Development Director
Andrew Hagen - Office Manager, "The Membership Guy"

Jaime Burton - Business Manager

Part-time Staff

Felix Gonzalez - Studio Engineer

Volunteer Part-time Staff

Mickey Applebaum - Network Administrator
Sue Gerber - Volunteer Coordinator
Susanne Millsaps - Newsletter Editor
Susan Schlotterbeck - Receptionist
Doug Young - Music Director
Keith Westerberg - "Voices" Graphic Designer

And 110 volunteer program hosts who bring you great radio 24/7.

Underwriting Reps

Sue Gerber
Kathy Hayden
Jerry Schmidt

a note from the General Manager

Can you believe that KRCL is turning 22 years strong on December 3rd? It doesn't seem like yesterday, but neither does it seem like it's been a little more than two decades. But that's how long ago this community decided it did indeed want and need a media source that was accessible to the people it serves. The station, guided by its mission, remains the only form of mass communication for many groups and communities that lack the power or money to gain access anywhere else.

In the wake of the September tragedy, many public radio stations were hesitant about having their fall on-air fundraising drives, but that's how we raise the station's budget. Not only did KRCL do better than it has ever done, but stations across the nation also had their best fundraisers ever. It is perhaps in times like these that we all realize what we value most. Once again, the public embraced what it valued and pledged insurance, and assurance, of the

continuation of Radio Free Utah, the community station that provides diverse music and information - sans commercial support.

Like everything else, the station goes through changes. At the end of this year we bid farewell to some good and dear friends that guided the station through some fun, rough, questioning, stressing, exciting and proud times. These "friends" are part of the board of directors - the unseen, unheard volunteers who are the fiduciary support of KRCL. Leaving the board at the end of their term are Robert Flores, Chris Keating, Chiedu Megwalu, Fran Pruyn, and Jo-Anne Wong Kilpatrick. Paul Wharton resigned/retired this past June. They have been the guardians of the mission of KRCL, the moral support of the station, and the place where the buck stopped. We extend our sincere gratitude and best wishes. (We'll list the names of the new board members in the next issue of Voices.)

You may have heard us talk about the fact that the station decided to invest in a renewable natural resource, wind power. It is an opportunity to increase the demand for new, clean renewable power. Although KRCL can only purchase 25% of its kilowatt hours in the form of wind power, it is the equivalent of the usage of three Utah households and has the same environmental benefit as planting nine acres of trees a year or not driving a car 48,000 miles per year. It means an extra thousand dollars a year from our budget, but it's a natural stance for community radio. You know, talk the talk and walk the walk.

Thank you for your support.

In the words of the Diné (Navajo),
May you walk in beauty above you,
beauty below you,
beauty all around you.

Donna

Public Affairs Helps to Fulfill KRCL's Mission

Excerpt from the KRCL Mission Statement:
ACCESSIBILITY:
KRCL is especially committed to populations traditionally denied media access. Racial minorities, women, and persons interested in broadcasting but lacking professional skills are encouraged to participate.

Several months ago Ivoni Nash, one of the hosts of the music show "The Voice of Polynesia", went to Donna and told her that the Tongan community needed a public affairs show. "The Tongan community is the largest of the Pacific Islander communities in Utah," she told Donna, "and KRCL is the radio station people turn to for community information." Then she produced a petition signed by hundreds of people saying they want and need a Tongan public affairs show.

And now we are pleased to announce the most recent addition to our local public affairs programs, "Tala Koula". "Tala Koula" is a public affairs show for the Tongan community in Salt Lake City and along the Wasatch Front.

PUBLIC
Affairs
by
Gena
Edvalson

Tala Koula

Tongan Public Affairs

Hosted by Ivoni, Fahina, Richard, Mata
Tuesdays at 6:30pm

Bringing the Tongan perspective to KRCL's airwaves.
Exploring issues such as:

- inter-racial marriage and bi-racial parenting;
- youth detention: how Tongan families deal with the process; and then in December,
- Christmas in Tonga: in the old days and now.

Your Turn

Got something on your mind?
Local politics getting under your skin? Why not get it off your chest?

You're welcome to write a letter to the editor (and it might even get played on the air). You can send your letter to Letters to the Editor.

Marc Hoenig
c/o KRCL
1971 West North Temple
Salt Lake City, UT 84116

KRCL's Wish List

Here are few things we could all use at the moment.

- Off-air volunteers to help with office projects and events
- Landscaping plants for our xeriscape landscaping project
- Digital camera
- Enough for everybody
- Color ink jet printer
- Peace on Earth

save this date

Saturday,
December 8 - all day
KRCL Day at
Ten Thousand Villages

2186 South 1100 East
A percentage of all proceeds for this day will go to KRCL. Ten Thousand Villages provides vital, fair income to Third World people by marketing their hand-crafts and telling their stories in North America.
www.tenthousandvillages.org

KRCL sponsored events

Saturday
December 8 - 7:30pm

Cherish the Ladies
Holiday Show

Peery's Egyptian Theater
2415 Washington Blvd, Ogden.
Tickets and info: (801) 395-3227.
www.oecenter.com

Saturday
December 15 - 7:30pm

Rosalie Sorrels
and Utah Phillips

Peery's Egyptian Theater
2415 Washington Blvd, Ogden.
Tickets and info: (801) 395-3227.
www.oecenter.com

Thursday
December 20 - 7:30pm

Guy Davis

Peery's Egyptian Theater
2415 Washington Blvd, Ogden.
Tickets and info: (801) 395-3227.
www.oecenter.com

Monday
December 31, 6pm-midnite

First Night 2002

Downtown Salt Lake City
A New Year's Eve Celebration of the Arts with music, theater & more.
Tickets and info: All Smith's Tix & www.firstnightslc.org

Friday
January 25 - 7:30pm

Blind Boys of Alabama

Peery's Egyptian Theater
2415 Washington Blvd, Ogden.
Tickets and info: (801) 395-3227.
www.oecenter.com

member info

Day in the Park Returns

Way back in the eighties, a group of KRCL volunteers decided to find a way to thank the supporters of KRCL, and Day in the Park was born. Over the years, we presented hundreds of bands, flipped millions of burgers, and showcased hundreds of non-profit organizations at multiple Days in the Park. We've missed a few years here and there, and we've gone to several different parks over the years.

Now, after an unavoidable two-year absence, and many listener calls and questions, KRCL is pleased to announce the return of Day in the Park in June of 2002. Long-time KRCL listeners will remember Day in the Park as a great annual party thrown by the KRCL volunteers to celebrate our community, and our community radio station, with terrific live music, food and fun.

Day In The Park enjoyed a long success-

ful run thanks to the donated time and effort of amazing and dedicated people like Steve Connor ("Tuesday Drive Time"), Truman Wold ("Red, White & Blues"), long time volunteer Doc Floor, and many, many others. Day in the Park 2002 is being coordinated by the Day the Park Committee, chaired by Teri of "Monday Global Gumbo". The Committee is planning a fantastic event for this June, to be held at a new location in our new neighborhood: Jordan Park, home of the International Peace Gardens. Keep an eye on KRCL's website and an ear on KRCL's airwaves for more details as the event gets closer. And a big thanks to everyone that helped with the KRCL Film Festival, a Day in the Park fundraiser at Brewvies Cinema Pub. It was a great event, and will go a long ways towards helping bring you Day in the Park 2002!

TELL A
FRIEND
ABOUT
KRCL.

THEY'LL
BE GLAD
YOU DID!

A Note from the Development Director

What a fantastic radiothon! A heartfelt thank you to each and every one of you who showed your support for KRCL through your financial donation. We wouldn't be here without you!

As I reflect about 2001 and all that KRCL participated in throughout the community, I feel proud to be associated with such a great organization. There are so many people I have talked to this year that have told me they love KRCL and have been helped by some aspect of what KRCL offers...free public service announcements, air-time for issues and local musicians, a source for music they can't get on any other radio station and that "sense of community" that so many of us put a high value on. These are some of the things that people really appreciate about this station.

The ongoing commitment of the 120 volunteers that keep this station on the air is just amazing. Whenever I'm telling someone new about KRCL and how it's operated they can't believe that there are so many people that give up their personal time every week to do a show. It's the thing that impresses people most about us.

Plans are underway for more community outreach next year. More people need to know about this great radio station! To that end, I'll be available to do presentations for groups and organizations wanting more information about KRCL. Just give me a call at the station and we can set it up.

Have a wonderful holiday season - and again, thank you for your support!

Kami St. John



Norwood Fisher, bass player with Fishbone, helps promote the KRCL Radiothon!

Listener VOICES

A Letter from China

Hi, there KRCL.

Currently I am living in China, and I am quite pleased by the fact that I can keep in touch with SLC via your internet-radio service! Last night, at about 7:30 p.m. your time, was the first time I have tried to use your site, and to my astonishment I tuned in for the Chinese program. Ironic, since I have never had the chance to listen to that program while in the states. I do hope to catch "Concerning Gays and Lesbians" this next Wednesday. Keep up the good work.

Kellie Anne Foreman

While we don't always have space to print your letters in Voices, we love to hear from our listeners. Send your comments, suggestions, and feedback to:

KRCL
1971 West North Temple
Salt Lake City, Utah 84116.
Or email us at mail@krcl.org

Recent KRCL Events

Music Fans Find Treasures at the KRCL Recycled CD & Record Sale

The shopping was great in the KRCL tent at the Avenues Street Fair. Music fans found unique and affordable recordings to add to their collections. The albums were very popular, as vinyl has become a collectable, and a few KRCL listeners donated some awesome record collections to the sale. There were also 1,000's of CD's to choose from. KRCL raised \$3,500!

Special thanks to all the people who worked on the sale - Doug Young, KRCL's Music Director took on the monumental job of sorting through all the CD's and categorizing them by genre, and the 20 KRCL volunteers who helped put on the sale.

A BIG THANKS goes out to James Piccone; JoAnne Wong-Kilpatrick; Karl Heriem, *host of "Not Available in Stores"*; Matt Welker, *host of "Across*

the Tracks"; Lori Nowlen; Jerry Schmidt; Deb Robertson, *co-host of "Art Speak"*; Neil Tanner; Brian Hansen, *host of "Absolute Elsewhere"*; Sue Gerber; Sharry Smith, *host of "The Lions Den"*; Lynn McCue-Hamilton; Chiedu, *host of "Thursday Global Gumbo"*; Chris Keating; John Florence, *host of "Saturday Sage"*; Lori Rosendahl, *co-host of "Sunday Sage"*; Betsy Price; Mike Christy, *host of "Wednesday Breakfast Jam"*; Brian Kelm, *host of "Blue Goat"*; for all their help.

KRCL will do another sale next summer.

Anyone can donate CD's and albums in good condition to KRCL anytime. Just bring them by the station between 8:30 and 5:00 or call Kami to make arrangements to drop them off after hours. We take donations for the sale all year long.



KRCL Listener Mark Melville seems ecstatic over his CD finds!

Singer Songwriter Showcase

In August, KRCL presented our annual Performing Songwriter Showcase in the historic Egyptian Theater on Main Street in Park City. The day featured ten of the best up-and-coming singer-songwriters from around the country, selected from over seventy entrants. Each songwriter presented two original songs. Judges included recording artists Andy and Cheryl Winston and local singer-songwriter Stacey Board. Audience members and judges alike agreed that there wasn't a clunker in the bunch, with songwriters coming from California, Montana, Virginia, Pennsylvania, and more, to perform and compete.

Finalists included Jenn Adams, Mark J. Bradlyn, Jerry Breesee, Georgette Dashiell, Mare Lennon, Erika Lockett, Joe McMurrian, Steve Quelet, Claudia Russell, and Jeannie Willetts.

The Showcase serves as the kickoff for the Founder's Title Folk and Bluegrass Festival, and the winner opens the next year's Festival. So if you missed this year's Showcase, you can catch this year's winner, Jenn Adams, at next year's Festival. And don't forget to join us next August for another great day of music and entertainment!



From left standing: Jeannie Willetts, Mare Lennon, Georgette Dashiell, Claudia Russell, Steve Quelet, and Joe McMurrian. Seated: Jerry Breesee, Mark J. Bradlyn, Jenn Adams, and Erika Lockett.

KRCL's Film Festival

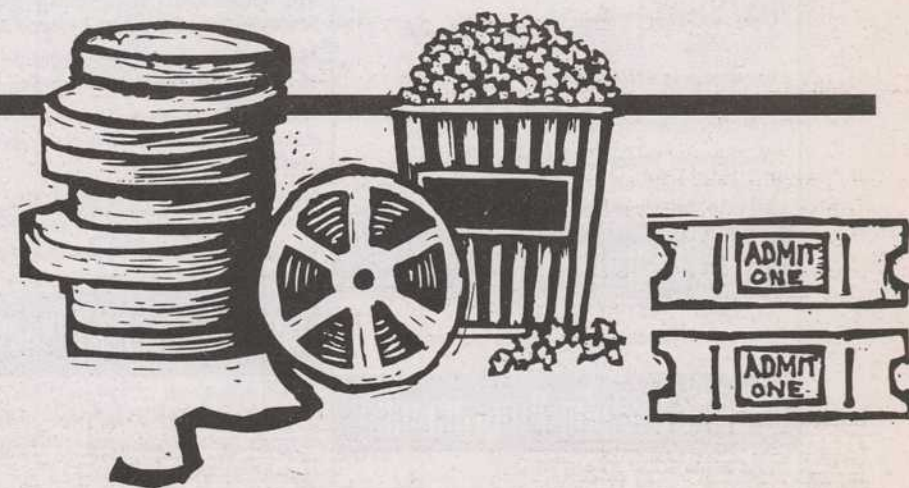
The KRCL Day in the Park Concert has always been a free event for the community, and KRCL wants to keep it that way. The challenge was - find a way to fund it.

This year's Day in the Park committee came up with a winner with the KRCL Film Festival. Brewvies Cinema Pub provided the location and donated all ticket proceeds to KRCL.

As this issue of Voices goes to the printer, the KRCL Film Festival has one more movie to show but the attendance at the

first four weeks is proof enough that KRCL listeners like the event. The movies ran in November on Thursday nights (except for Thanksgiving; that week's movie was on Wednesday) and several of the showings sold out!

Plans for Day in the Park 2002 are well underway as are discussions about what movies to show at next year's KRCL Film Festival. Many thanks to Brewvies, KRCL listeners, and The Day in the Park Committee.



We at KRCL ask the probing question...

What's in Your CD Player?

Dave Santivasi

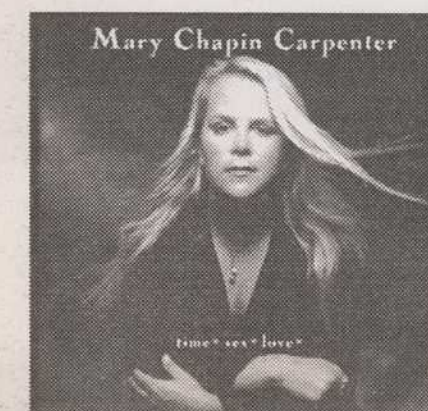
host of "Aural Decay"
Wednesdays, 8 -10:30 pm:

Bonnie Raitt:
Luck of the Draw (Capitol)

Various Artists:
America, A Tribute to Heroes (Interscope)

Various Artists:
Soundtrack, Woody Allen's "Manhattan" (Columbia)

Mary Chapin Carpenter:
Time Sex Love (Columbia)



Karl Heriem

host of "Not Available in Stores"
Thursdays, 3:30-5:30 am:

Bjork:
Vespertine (Elektra)

Artur Rubinstein:
Various piano pieces by Frederic Chopin (BMG)

Jah Wobble and Bill Laswell:
Radioaxiom (Palm)

Laurie Anderson:
Life on a String (Nonesuch)



Susanne

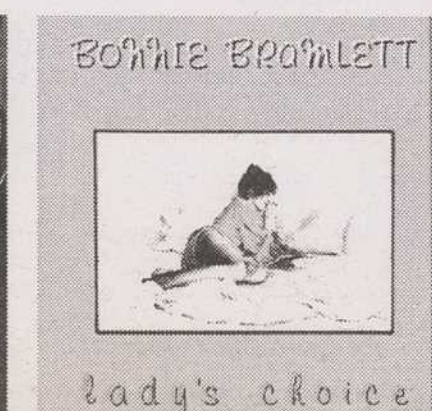
host of "Thursday Breakfast Jam"
Thursdays, 6 - 9 am:

Erika Lockett:
My Little Crime (Bird Fish)

Georgia Barretto:
Sensibilidade (self)

Stephanie Corby:
Fireworks in March (Steam Heat)

Bonnie Bramlett:
Lady's Choice (Capricorn)



Andy Schlotterbeck,

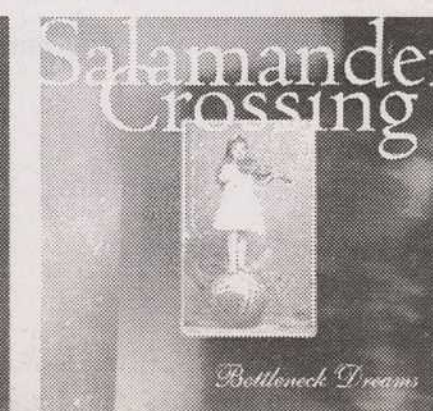
producer of public service announcements and volunteer extraordinaire

Paul Pena:
New Train (London/Sire)

Little Feet:
Let It Roll (Warner)

Steve Forbert:
Evergreen Boy (Koch)

Salamander Crossing:
Bottleneck Dreams (Signature Sounds)



Music Matters

Reggae Mon! In Utah?

It seems that everywhere you look there is something Jamaican- or reggae-influenced. Dreadlocks have become a popular hairstyle, "no problem, mon" is heard more and more, and reggae and ska music is often heard on KRCL 90.9 FM.

Reggae music comes in different styles, from the rock steady beat to the heavy dancehall bass. All of it can be heard on KRCL during the reggae and ska programs. And when a reggae band comes to town, it draws a crowd of very appreciative fans from all walks of life.

It has been said in a recent news article that Salt Lake City prefers the softer 70's roots style of reggae, and perhaps that is true. You see, Salt Lake City is a slower, softer city than New York City or Los Angeles, and Salt Lake City residents, for the most part, prefer it that way. And that's okay.

So to the folks that are new in town, welcome to Salt Lake City. We may not have a dancehall nightclub, but rest assured reggae music is alive and well in Salt Lake City, in just the way we like it.

The Lioness

The Lioness, who is also sometimes known as Sharry Smith, can be heard on KRCL on Thursday nights from 10:30 pm to 1:00am, hosting "The Lion's Den". Reggae can also be heard on Thursday from 8-10:30pm and on Saturday from 4-7pm. Ska airs Saturdays from 7-9pm.

KRCL to Present Live Local Music in a New Series

KRCL is proud to present "Wednesday Night Live", a new series highlighting Utah's local music scene. This new series will air during the "Aural Decay" program the second Wednesday of each month from 9 - 10 p.m. "Aural Decay" has been hosted by Dave Santivasi for over twenty years. The show will feature a different local band each month playing a one-hour set live from KRCL's performance studio.

For over 21 years KRCL has been the radio leader in providing airtime and exposure to local musicians. From folk singers to punk bands, local musicians have always found a home on KRCL, and this new series will provide an unprecedented platform for artists to stretch out with an extended set of music.

You can always find out who's playing next by checking out KRCL's web page at www.krcl.org.

Please recycle by giving this copy of Voices to a friend!

KRCL Community Radio Radio for the Rest of Us!

KRCL, Listeners Community Radio is a non-profit, listener-supported, commercial-free radio station committed to providing media exposure for disenfranchised and under-represented populations along the Wasatch Front.

KRCL serves the community by providing:

1. A diverse selection of music programming
2. Local public affairs programs
3. Free public service announcements for non-profit organizations
4. Sponsorship for community events and concerts
5. National public affairs and news programs
6. Ethnically diverse programming

The vast majority of programs heard on KRCL are produced and hosted by volunteers. These volunteers are people from our community who contribute countless hours of their time, bringing KRCL listeners great music and vital information. This is a remarkable phenomenon when one considers how much time is involved in producing a weekly radio program.

KRCL has been broadcasting since 1979 thanks to the dedication and support of its members and volunteers. For more information about KRCL log on to www.krcl.org, give us a call or tune your radio to 90.9 FM in Salt Lake and 96.5 FM in Park City!

New members are always welcome.

Office Phone: 801-363-1818

Studio Phone: 801-359-9191



krcl
Your Community Radio

90.9 fm Salt Lake
96.5 fm Park City
www.krcl.org

listeners community radio of utah, inc.
1971 w. north temple
salt lake city, ut 84116

NON-PROFIT
ORGANIZATION
U.S. POSTAGE
PAID
SALT LAKE CITY UTAH
PERMIT NO. 3873

Please notify us of any change of name or address. The post office will not forward this newsletter.